



Jeep[®]
COMPASS



CAPABILITY WITHOUT COMPROMISE.

With legendary roots enhanced by a generous infusion of creature comforts and efficient value, Compass claims the role of modern-day icon. The impressively capable Compass takes every adventure-seeking enthusiast up, over and beyond, to arrive at destinations that most can only dream of reaching.



Jeep

SUPER 4WD NATURAL.

Serious off-road adventurers now have an opportunity to go anywhere and do anything with the capable all-new Compass. It is an all-weather traveller that fears no rain, mud or sand. Whether it is a cruise in the city streets or travelling off-road, Compass will always remain true to its authentic Jeep brand roots.



2.4-LITRE DOHC 16V ENGINE

This powerhouse zooms off to achieve an estimated fuel efficiency of 7.1-litres/100 km Extra Urban Cycle with manual transmission while delivering 125 kW of power supported by 220 N.m. of torque. The engine's dual Variable Valve Timing electronically controls both intake and exhaust valves, four valves per cylinder (16V total), helping to improve power and encourage an economic performance.

2.0-LITRE DOHC 16V ENGINE

Efficient and capable of delivering up to 6.1 -litres/100 km Extra Urban Cycle, the 2.0-litre four-cylinder engine cranks out a healthy 115 kW of power and 190 N.m of torque resulting in an impressive performance for an engine this size. It's matched to a 5-speed manual 2WD transaxle or the automatic Constantly Variable Transmission (CVT).

FREEDOM DRIVE™

Freedom Drive™ active, full-time 4WD capability with LOCK mode, features Electronically Controlled Coupling (ECC), which constantly monitors wheel slippage and transfers torque to the axle that can use it most. In tough conditions, the system can be locked 50/50 front/rear for added low-speed capability and control.

CONSTANTLY VARIABLE TRANSMISSION (CVT)

The Constantly Variable Automatic Transmission (CVT) with AutoStick uses a 30-mm high-strength multi-layer steel drive belt and two active V-pulleys to vary vehicle speed, resulting in a smooth and quiet ride. The AutoStick shifter puts optimal vehicle performance under your command.





Compass Sport shown in Deep Cherry Red.



A vertical stack of control buttons on the left side of the steering wheel:

- Phone icon button
- MENU button
- NAV button
- USB icon button with 'PULL' text below it
- AUX button

A cluster of control buttons on the bottom left of the steering wheel:

- VP icon button
- Phone icon button
- Document icon button
- Right arrow button
- Down arrow button

Jeep



SPORT.

Compass Sport welcomes value-minded enthusiasts to the land of Jeep® brand capability. A bevy of strong and standard features accompany you, including a four-wheel Anti-lock Brake System (ABS), Electronic Stability Control (ESC) with Electronic Roll Mitigation (ERM) and All-speed Traction Control (ASTC). Inside, standard comfort and convenience features abound, including a fold-flat front passenger seat and a standard remote keyless entry system.

Comfortable city trips and adventurous expeditions begin with Sport.



1 FOR THE LOVE OF SPORT. Play to win with Sport's 17-inch aluminium wheels, bright side roof rails, LED taillamps, and body-color rear spoiler, exterior door handles and liftgate brow.

2 BRIGHT IDEAS. Standard illuminated cup holders help beverages land securely in the centre console. A removable and rechargeable light is another convenient feature that helps you find your way.

3 CARGO CAPABLE. The rear liftgate opens up to reveal 1,269-litres of cargo room when the standard 60/40 split-folding rear seats are laid down flat.

4 HANDLE WITH PRIDE. The four-wheel independent touring-tuned suspension on Compass improves on-road handling and cornering and helps to provide a smooth and even ride.

LIMITED.

Limited's cabin includes standard luxury features such as, Automatic Temperature Control (ATC), heated front bucket seats and the standard Media Centre 431 CD/DVD/HDD radio. Limited offers smart, upscale features paired with impressive fuel economy all in the one package.



- 1 FOUR-WHEEL ANTI-LOCK BRAKES (ABS).** This system includes Brake Assist and All-speed Traction Control (ASTC) to help maintain vehicle control during emergency braking. Special off-road calibration provides sustained lockup on surfaces like mud or gravel for improved braking, as well as helping to securely navigate off-road trails when driving in 4WD.
- 2 GRABS UNLIMITED ATTENTION.** Upscale styling adds to Limited's appeal with ultra-brite 18-inch aluminum wheels, a bright exhaust tip and bright accent on the rear fascia.
- 3 INNER SANCTUARY.** Limited's cabin includes standard luxury features like a leather-wrapped steering wheel with cruise and audio controls, six-way power adjustable driver's seat, heated front seats and the Media Centre 431 radio.
- 4 AUTOMATIC TEMPERATURE CONTROL (ATC).** Preset the desired temperature and the airflow is automatically adjusted and dehumidified. An air filtration system helps remove pollen, mold spores and dust.



Compass Limited shown in Bright Silver

LEGENDARY LINEAGE.

For over 70 years, Jeep vehicles have ruled the rocks, road and mud, adeptly taking charge with courage and dependability. Compass was designed with comfort and efficiency in mind and was brought into this world with the same off-road expertise that produced the award winning Jeep Grand Cherokee. This sophisticated all-weather traveller will take you anywhere you want to go and is ready to show you a whole new world of adventure.





Grand Cherokee shown in Brilliant Red and Compass Limited shown in Bright Silver.



INFORMED AND WELL-CONNECTED.

Stay in touch with the people, music and devices that matter most. Uconnect is an intuitive hub for all of your media i.e. mobile phone, navigation system and MP3 player. It is designed to make your life easier, wherever you go.



PHONE. Talking on the phone while driving has never been easier, or more responsible. Uconnect Phone is an in-vehicle, voice-activated communication system that allows you to talk on your Bluetooth® compatible phone virtually hands-free. This clever system is also smart enough to synchronise with your Bluetooth compatible phone's address book with up to 1000 entries.



VOICE COMMAND. It simplifies driving by letting you keep your eyes on the road and your hands on the wheel. Vocally select radio stations, make and receive calls, select navigation destinations and record voice memos. This smart system technology can also be trained to better recognise your voice and can understand commands in English, French and Spanish.



ENTERTAINMENT. Manage all of your media and access your audio in six different ways. Get the sound going via CDs/DVDs, MP3s, remote USB port, auxiliary input jack, hard disc storage, Voice Command and Bluetooth streaming audio.



NAVIGATION. Enjoy safe travels with the available GPS Navigation, providing voice guidance and visual display. It can also locate nearby petrol stations, restaurants, shopping, hospitals or points of local interest.



MEDIA CENTRE 730 CD/DVD/HDD/NAV RADIO. Go anywhere, hear everything with this advanced multimedia system. Hands-free communication lets you talk safely on the phone, text, or operate the radio. It arrives loaded with a hard drive to store your media.



GUARDIAN HERO.

Peace of mind takes you far. Head out with confidence, knowing that a robust set of more than 30 available safety and security features are in place, keeping watch on the trail and on the road. A Jeep® engineered safety cage structure contains a front crumple zone specifically designed to absorb energy during a frontal impact.

ELECTRONIC STABILITY CONTROL (ESC)⁽¹⁾

ESC is designed to assist drivers in maintaining control of their vehicle at all times. It integrates a four-wheel Anti-lock Brake System (ABS) with hydraulic Brake Assist, All-speed Traction Control (ASTC) and Electronic Roll Mitigation (ERM) to constantly monitor driver input against the vehicle's actual course. When needed, the system automatically helps provide braking to the appropriate wheels and reduces engine power when overly sharp steering and/or impending wheel lift is detected.

ADVANCED MULTI-STAGE FRONT AND SIDE-CURTAIN AIR BAGS⁽²⁾

These air bags provide nearly instantaneous occupant protection by matching air bag output to crash severity.

SUPPLEMENTAL SEAT-MOUNTED SIDE AIR BAGS⁽²⁾

These deploy from the outboard side of each front seat to enhance protection of the driver and front passenger in certain impacts. Each side air bag has its own sensor to autonomously trigger the air bag on the side where the impact occurs (Packaged in Safety & Comfort Group).

HILL START ASSIST (HSA).

This system works to prevent Compass from rolling away when starting the vehicle on an up or downhill gradient. It holds the vehicle stationary for two seconds after the driver's foot is removed from the brake pedal, allowing time to apply the accelerator (Available on manual transmission models only).

FRONT SEAT ACTIVE HEAD RESTRAINTS.

In the event of a rear-end collision, the head restraints move forward and upward to decrease the space between the head restraint and occupant's head, thereby helping to reduce the chance of injury.

TYRE PRESSURE MONITORING SYSTEMS.

Embedded sensors continuously monitor the pressure in tyres and will notify the driver immediately when the levels drop below the minimum acceptable level. (Packaged in Safety & Comfort Group).



(1) No system, no matter how sophisticated, can repeal the laws of physics or overcome careless driving actions. Performance is limited by available traction, which snow, ice and other conditions can affect. When the ESC warning lamp flashes, the driver needs to use less throttle and adapt speed and driving behaviour to prevailing road conditions. Always drive carefully, consistent with conditions. Always wear your seat belt. (2) Always sit properly in the seat with the seat belt fastened. Always observe the passenger air bag indicator lamp to determine if the Occupant Classification System (OCS) is appropriate. Children 12 and under should always be in the backseat correctly using an infant or child restraint system or the seat belt positioned correctly for the child's age and weight.

GENUINE ACCESSORIES.

When your Compass is outfitted with Genuine Jeep® Accessories by Mopar, its stylish, eye-catching profile becomes uniquely you. Mopar products are specifically designed to enhance your vehicle, making it a creation of distinction and flair. When it comes to the fit, finish and functionality of accessories for your Compass, choose only those that befit a legendary brand. For the full range of Genuine Jeep Accessories by Mopar, please visit your local authorised Jeep dealer.

1 MOULDED SPLASH GUARDS.⁽¹⁾ These moulded splash guards are designed to help protect Compass' body panels by deflecting gravel, salt and other road debris. The guards feature the Jeep logo.

2 TOW BAR KIT.⁽¹⁾ Transport more gear with you thanks to the available tow bar kit. The kit includes tow bar, towball and wiring harness.

3 SPORT UTILITY BARS. The sport utility bars feature t-slots for mounting all available Mopar carriers.

4 ROOF-MOUNT WATER SPORTS CARRIER. Transports most kayaks, sailboards or surfboards with flat or curved hulls. Includes nylon latching and slip-resistant pads.

5 TENT KIT. The recreation tent is blue and grey, and features a 10" x 10" sleeping area, two doors, three large mesh windows, exterior canopy and storage case. It can be used attached to the rear of the vehicle or as a standalone tent.

6 DOG BED CARGO AREA MAT. Keep your favourite canine content while keeping your cargo area protected from dirt. The thick 2-inch mat features grey cloth material with washable cover.

7 EXTERIOR ACCESSORIES (main image). **Roof-top Cargo Carrier.** Add more cargo space to Compass with the available roof-top cargo carrier. The carrier may be mounted to production roof rails or sport utility bars. **Wheel Kit.** Premium 18-inch black painted cast aluminium wheels machined to match Compass' specifications exactly for a smooth and balanced ride. **Chrome Mirror Covers.** Add a touch a class to Compass' side mirrors with the available chrome mirror caps. **Chrome Fuel Filler Door.** The sculpted chromed aluminium fuel filler door includes a single piece fuel door with production-style hinge.

⁽¹⁾ Check Owner's Manual for load capacity and heavy duty equipment required. Do not exceed rated tow capacity of vehicle as equipped. Towing may require some items not supplied by Jeep.

GENUINE JEEP® ACCESSORIES





Compass Sport shown in Black



INTERIOR TRIM.

WHEEL OPTIONS.

SPORT



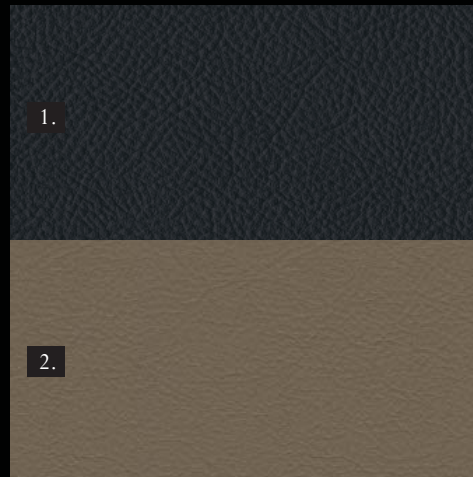
- 1. Cubic Cloth/ Duet Cloth — Dark Slate Gray
- 2. Cubic Cloth/ Duet Cloth — Light Pebble Beige

SPORT



17-inch Painted Aluminium Wheels

SPORT



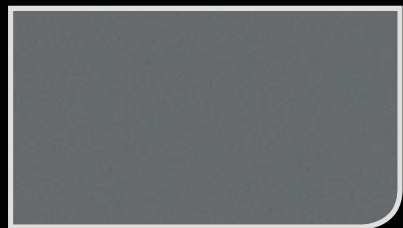
- 1. McKinley Leather Trim — Dark Slate Gray
- 2. McKinley Leather Trim — Light Pebble Beige

LIMITED

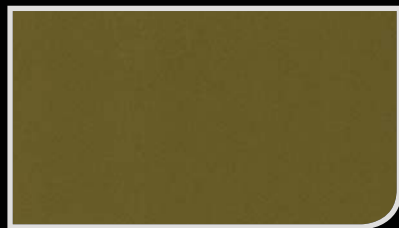


18-inch Ultra-Bright Machine Cast Aluminium Wheels

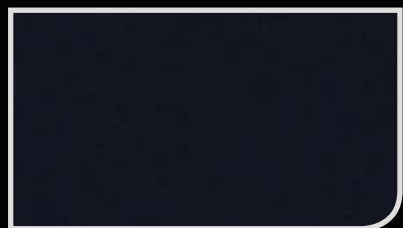
PAINT COLOURS.



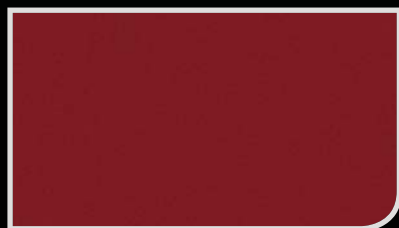
Tungsten Metallic



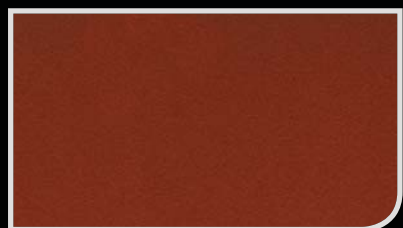
Rescue Green



True Blue



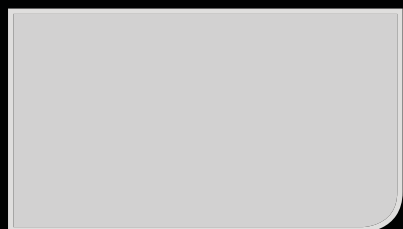
Deep Cherry Red



Copperhead



Bright Silver



Bright White



Black



Compass shown in Bright Silver

Note: Due to the printing process, the colours shown may vary slightly from actual hues.

COMPASS: TECHNICAL SPECIFICATIONS.

POWERTRAIN

	2.0L DOHC 16V dual VVT I-4	2.4L DOHC 16V dual VVT I-4
Engine	2.0L DOHC 16V dual VVT I-4	2.4L DOHC 16V dual VVT I-4
Displacement (cc)	1,998	2,359
Power (kW @ rpm)	115 @ 6,300	125 @ 6,000
Torque (N.m @ rpm)	190 @ 5,100	220 @ 4,500
Bore x Stroke (mm)	86.0 x 86.0	88.0 x 97.0
Compression Ratio	10.5:1	10.5:1
Alternator	120 amp	120 amp
Battery	525 amp maintenance free	525 amp maintenance free
Service interval, Primary (km)	12,000	12,000
Fuel System	Sequential multipoint electronic fuel injection	Sequential multipoint electronic fuel injection
Fuel Economy - Combined, Urban, Extra-urban (L/100km)		
- 5-speed Manual	7.6/ 10.2/ 6.1	8.5/ 10.9/ 7.1
- CVT	8.2/ 10.7/ 6.7	8.6/ 11.3/ 7.0

TRANSMISSION

Sport (Standard)	5-speed manual with overdrive, ratio range (:1) 3.77-0.72 (1st- 5th) overall top gear ratio: 2.97
Limited (Standard)	Constantly Variable Transmission (CVT), ratio range (:1) 2.35-0.39, overall top gear ratio: 2.28

DRIVE SYSTEMS

Front-wheel-drive (2WD)	Transaxle with constant velocity joints and equal-length half shafts
Freedom Drive™	Active full-time four-wheel drive (4WD) with selectable LOCK feature

CAPACITIES/WEIGHTS

Base Kerb Weight (kg)	1,424 - 1,480	1,460 - 1,586
Fuel Tank (L)	51.1	51.1
Max. Gross Vehicle Weight Rating (kg)	2,010	1,980

TOWING DATA (mm unless otherwise specified)

Trailer Tow Capacity (kg)	up to 1,200	up to 1,500
Tongue Load Limit (kg)	up to 120	up to 150

BODY/ SUSPENSION/ CHASSIS

Body Design	Unitised steel construction with a structural safety cage utilising advanced hot-stamped, tailor-rolled, dual-phase steel technologies and advanced joint design for added strength, reduced weight and improved Noise Vibration and Harshness (NVH) levels
Suspension - Front	Independent with MacPherson struts, coil springs over gas-charged shocks and stabiliser bar
- Rear	Independent multi-link with coil springs, gas-charged shocks and link-type stabiliser bar

BODY/ SUSPENSION/ CHASSIS (Continued)

Steering - Rack-and-pinion, power assisted; overall ratio	16.4:1
Turns - (lock-to-lock); 17" wheels/18" wheels	2.9/2.8
- Turning diameter (m) (kerb-to-kerb)	10.8/11.3

BRAKE SYSTEMS

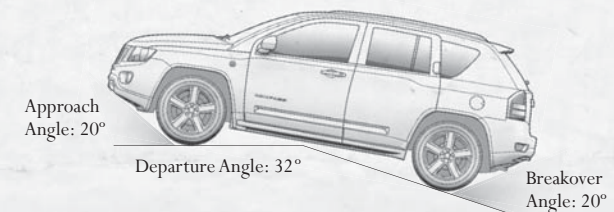
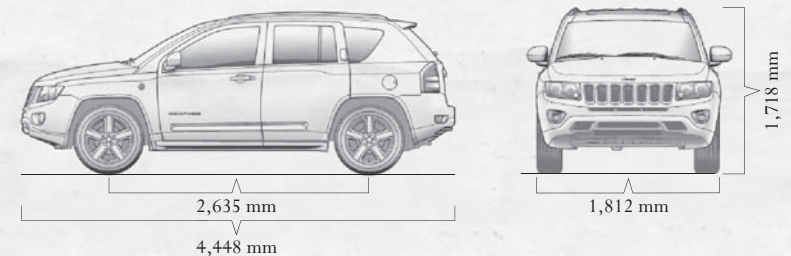
Front/Rear	ABS 4-wheel disc hydraulic, power-assisted, 57 mm vented front/35 mm solid rear
Electronic Stability Control (ESC)	Four-channel, four-wheel anti-lock brakes with active wheel-speed, vehicle-speed, steering-wheel angle, yaw-rate and lateral-acceleration sensors, vehicle stability management with two-stage activation switch, All-Speed Traction Control (ASTC), Brake Assist, Electronic Roll Mitigation (ERM) and Electronic Brake Distribution (EBD)

INTERIOR DIMENSIONS (mm unless otherwise specified)

Head Room, front/rear	1,033.7/1,013.9
Leg Room, front/rear	1,032.1/999.7
Shoulder Room, front/rear	1,380.4/1,372.0
Hip Room, front/rear	1,328.8/1,294.5
Cargo Volume (L) seats up/seats folded	458/1,269
Seating Capacity	5 Adults

EXTERIOR DIMENSIONS (mm unless otherwise specified)

Length - Wheelbase	2,635
- Overall	4,448
- Ovehang, front/rear	916/897
Width - Overall (excluding mirrors)	1,812
- Track, front/rear	1,520/1,520
Height Overall (including roof rails)	1,718
Running Ground Clearance (at kerb weight)	205
Approach/Departure/Breakover Angle	20°/32°/20°



FEATURES & OPTIONS

Sport

Limited

CAPABILITY

Powertrain	2.0L DOHC 16-valve dual VVT I-4 with 5-speed manual transmission (2WD only)	•	
	2.0L DOHC 16-valve dual VVT I-4 with Constantly Variable Transmission (CVT) with Auto Stick manual shift mode (2WD only)	O	
	2.4L DOHC 16-valve dual VVT I-4 with 5-speed manual transmission	•	
	2.4L DOHC 16-valve dual VVT I-4 with Constantly Variable Transmission (CVT) with Auto Stick manual shift mode	O	•
Four-Wheel-Drive System	Freedom Drive™ active full-time four-wheel drive with selectable lock feature	•	•
Front-Wheel Drive (2WD)		•	
Hill Start Assist (HSA)	(manual transmission only)	•	

EXTERIOR

Accents	Body-colour fascias, door handles and grille with chrome accents	•	•
	Bright rear step insert and bright exhaust tip		•
Glass	Solar Control Glass	•	
	Deep tint sunscreen (packaged in Comfort and Convenience Group)	P	•
Lighting	Halogen headlamps with levelling system	•	•
	Front and rear fog lamps	•	•
	Daytime running lamps (halogen)	•	•
Mirrors	Power-folding heated exterior mirrors	•	•
Sunroof	With sliding sunshade, express open/close and tilt features		O
Tyres	215/60R17 Continental ContiPremiumContact2	•	
	215/55R18 Continental ContiPremiumContact2		•
Wheels	17-inch painted aluminium	•	
	18-inch bright cast aluminium		•
Wiper System	Front; Variable intermittent windshield wipers	•	•
	Rear; Window wiper/washer	•	•

INTERIOR

Air Conditioning	Manual temperature controls	•	
	Automatic temperature controls		•
Cargo Area	Carpeted folding rear seatbacks and floor, cargo cover, storage bin and cargo tie-down loops	•	•
Console	Full length floor console with sliding armrest, illuminated cup holders	•	•
Cruise Control	Electronic, with steering wheel mounted controls	•	•
Electronic Vehicle Information Centre (EVIC)	Includes temperature and compass gauge; traveller/mini-trip computer; Tyre Pressure Monitoring (TPM) display (when equipped)	•	•
Floor Mats	Luxury front and rear	•	•
Lighting	Instrument panel courtesy, cargo compartment, map/dome reading and rear dome lamps	•	•
	Removable, rechargeable torch located in cargo area	•	•
Mirrors	Day/night rearview	•	
	Auto-dimming rearview with microphone (packaged with Uconnect Phone)	P	•
Seats, Fabric	Stain-resistant, odour-resistant, anti-static premium cloth seat fabric	•	
	McKinley Leather & Vinyl Trim seat fabric		•
Seating, Front	Heated front seats (packaged with Safety & Comfort Group)	P	•
	Driver's seat height adjuster	•	
	6-way driver power seat adjustment and manual lumbar adjust		•
	Low-back reclining front buckets with front passenger forward fold-flat seat	•	•

Sport

Limited

INTERIOR (Continued)

Seating, Rear	60/40 split-folding, reclining bench	•	•
Steering Wheel	Leather-wrapped steering wheel with audio controls	•	•
Windows	Power with driver one-touch auto-down	•	•

SAFETY AND SECURITY

Air Bags⁽¹⁾	Advanced multi-stage, driver and front-passenger	•	•
	Supplemental side curtains with roll-sensing technology	•	•
	Supplemental driver and front-passenger seat-mounted side air bags (packaged in Safety & Comfort Group)	P	P
	Active head restraints	•	•
Brakes	4-wheel disc anti-lock brake system (ABS)	•	•
Electronic Stability Control (ESC)⁽²⁾	Includes Brake Assist, All-Speed Traction Control (ASTC), Electronic Roll Mitigation (ERM) and Brake Lock Differentials (BLD)	•	•
Power Accessory Delay	Allows operation of radio, power sunroof and windows for up to 45 seconds after ignition is turned off or until door is opened	•	•
Power Door Locks	Speed-sensitive	•	•
Remote Keyless Entry	Includes Sentry Key anti-theft engine immobiliser and illuminated entry feature	•	•
Deluxe Security Alarm		•	•
Tyre Pressure Monitoring Display	(packaged in Safety & Comfort Group)	P	P

UCONNECT™ MULTIMEDIA

Audio Systems	4 speakers	•	
	Boston Acoustics® Audio System with 9 speakers including 2 flip down liftgate speakers		•
Media Centre Radios	Media Centre 135 CD/DVD/MP3 radio with audio jack	•	
	Media Centre 431 CD/DVD/HDD radio with 16.5 cm touch screen, 40GB hard drive (6,700 song capacity), Uconnect Phone, ⁽⁵⁾ Voice Command, ⁽³⁾ remote USB port and audio jack		•
	Media Centre 730 CD/DVD/HDD/NAV radio with 16.5 cm touch screen, GPS navigation, ⁽⁴⁾ 40GB hard drive (4,250 song capacity), Uconnect Phone, ⁽⁵⁾ Voice Command, ⁽³⁾ remote USB port and audio jack (packaged in Technology Group)		P
Uconnect Phone⁽⁵⁾	Hands-free communication system with Address Sync, Bluetooth®, Voice Command, ⁽³⁾ auto-dimming rear view mirror and remote USB port	O	•

PACKAGES

Comfort & Convenience Group	Deep tint sunscreen glass	O	
Safety & Comfort Group	Including supplemental front-seat side-mounted air bags, heated front seats (heated front seats standard on Limited) and Tyre Pressure Monitoring display	O	O
Technology Group	Boston Acoustics audio system with 9-speakers including a subwoofer and 2 flip-down liftgate speakers, Media Centre 730 CD/DVD/HDD/NAV ⁽⁴⁾ radio, Uconnect Phone, ⁽⁵⁾ Voice Command ⁽³⁾ and rear view auto-dimming mirror		O

• = Standard O = Optional P = Available within package noted

(1) Always sit properly in the seat with the seat belt fastened. Always observe the passenger air bag indicator lamp to determine if the Occupant Classification System (OCS) is appropriate. Children 12 and under should always be in the backseat correctly using an infant or child restraint system or the seat belt positioned correctly for the child's age and weight. (2) No system, no matter how sophisticated, can repeal the laws of physics or overcome careless driving actions. Performance is limited by available traction, which snow, ice and other conditions can affect. When the ESC warning lamp flashes, the driver needs to use less throttle and adapt speed and driving behaviour to prevailing road conditions. Always drive carefully, consistent with conditions. Always wear your seat belt. (3) Requires Uconnect Phone. (4) Never program while driving. GPS mapping may not be detailed in all areas or reflect current road regulations. See dealer for details. (5) Must use Bluetooth® compatible phone.

Jeep[®]
jeep.com.au

COMPASS

All product illustrations and specifications are based upon current information at the time of publication approval. Although descriptions are believed correct, accuracy cannot be guaranteed. Chrysler Group LLC reserves the right to make changes from time to time, without notice or obligation, in prices, specifications, colours, materials and to change or discontinue models. See your dealer for details. Jeep, Compass, Mopar, Sentry Key and the Jeep Grille are registered trademarks and Uconnect is a trademark of Chrysler Group LLC. Boston Acoustics is a registered trademark of Boston Acoustics, Bluetooth[®] is a registered trademark of Bluetooth SIG, Inc. All rights reserved.

Printed in Australia SBMK492011 12/11