

Pastel colours



168 BREAKCORE RED



249 AMBIENT WHITE



479 LINE BLUE



551 FUNKY ORANGE

Metallic



112 WONKY TECHNO ORANGE



293 FLAMENCO RED



355 DISCO GREEN



448 HILLBILLY AZURE



487 COOL JAZZ BLUE



612 MINIMAL GREY



632 ROCKABILLY BLACK



www.fiat.co.uk



QUBO



CIAO FIAT
00 800 342 800 00

Contact CIAO FIAT on 00 800 3428 0000* if you are a customer or prospective customer. CIAO FIAT provides you with access to all our products and services in the UK and can be used even when you are abroad (the number can be called from most countries in Europe). The call is free from land lines in the UK and all Europe (except Switzerland). Mobile network charges may vary depending on whom your contract is with.

Performance figures supplied by Fiat Group Automobiles SpA. Fuel consumption figures are in accordance with the Passenger Car Fuel Consumption and CO₂ Emissions Information Regulations 2001. Products offered for sale may differ from those described or illustrated in this brochure due to later production changes in specifications, components or place of manufacture. The contents of this brochure are therefore to be treated as representations as to the current availability of products as described, or as to products actually offered for sale. Fiat Group Automobiles UK Ltd. reserves the right to make changes at any time, without notice, to prices, colours, materials, equipment, specifications and models and also to discontinue models. Variations in product specification do occur from time to time – please check the exact specification with the dealer at the time of order.

Fiat Group Automobiles UK Ltd, Fiat House, 240 Bath Road, Slough SL1 4DX.

* Pan European Freephone number from all UK land lines. A minimum charge applies to calls made from mobiles based on network rates.



SUBSTANCE
AND
INDIVIDUALITY

QUBO

JUST MARRIED
JUST MARRIED
JUST MARRIED

If you're the kind of person who doesn't worry about this week's 'must haves' or whether beige is the new black, if you seek form with real function, if the ingredients that make your special day are simplicity, convenience and freedom to be yourself, **then the Fiat Qubo's for you.**

Refreshingly original, nimble and compact, it's every inch the urban car, but with loads of room for everything your life throws at it. Simple really.



Distinctive, warm and welcoming, Fiat Qubo's interior also gives you a spacious loading compartment that's easy to access through the sliding doors. This is a real living space on the move, with a huge glass area that lets the light flood in and gives you great all-round visibility, especially with its raised driving position. It is the ideal environment for relaxing and getting on with what matters: driving.





If you believe in the power of simple, ingenious solutions, **then Fiat Qubo is very much like you.**

Making the complex straightforward, and turning functionality into an art form, Fiat Qubo is about ease of use, ultra-low running costs and real driveability, helped by a turning circle of less than 11 metres. It's beautifully simple.



Everything about driving the Fiat Qubo is simple and enjoyable. All controls are at your fingertips and the instrumentation is crystal clear. To personalise your drive, choose between a smooth 5-speed manual gearbox and the amazing Dualogic™ system that's available with the 1.3 16v 75bhp MultiJet diesel engine. Dualogic™ brings you sequential manual gearshifts and a full automatic mode, plus an ECO function for reduced fuel consumption and emissions. When it comes to communication and entertainment, simplicity rules again. Blue&Me™ allows you to make and receive phone calls, listen to text messages, connect your media player via the USB port and tune in to music perfection. Thanks to universal voice recognition and Bluetooth® technology you can have it all, without taking your eyes off the road, because Blue&Me™ is always in tune with you. The popular Blue&Me™ system (standard on MyLife and Trekking trims) has now joined forces with TomTom; the touch screen navigator integrates all the functions of Blue&Me™ with the advanced navigation system TomTom (available as an accessory). Telephone, radio, audio and navigation system are used safely by voice commands and buttons on the steering wheel.

Thanks to the USB port you can access all functions of Blue&Me™.



Blue&Me™ also includes the TomTom function ecoDrive: Info, tips and suggestions for a more economic and ecological drive.

You do not need
labels, but
space for your
passions...

Fiat Qubo MyLife
is the one for you



* Vehicle shown includes optional Roof bars

If you like to live life to the full and you need a car that accommodates your passions and pastimes, **Fiat Qubo MyLife is for you.**

You don't have to go surfing, biking, kite flying or exploring all the time, but it's good to know that you can, any time you feel like it. From nipping round the corner to an epic journey, Fiat Qubo MyLife is designed to make your plans come together.

Dedicated to those who want to live close to nature, the Qubo Trekking offers you even greater versatility: with its adventurous go-anywhere looks, metallic sump guard and increased ride height, it is no stranger to being off the beaten track.

In addition, the Qubo Trekking comes equipped with TRACTION+, an electronic limited slip differential that prevents wheel spin by diverting power to the wheel with the most grip. This is combined with an ESP stability control system, ASR, MSR and Hill Holder all as standard, ensuring maximum road-holding and braking performance whatever the driving conditions.



TRACTION+ guarantees better traction on the wheels (up to 20mph) providing excellent off-road performance while achieving impressive fuel consumption and low CO₂ emissions.



The ample space inside the Fiat Qubo is incredibly flexible. The seats can be arranged in up to 16 different positions, while rear seats can be folded 60/40, providing you with up to 2,500 litres of storage space. Taking versatility to the next level, you can also choose from a wide range of practical accessories that includes surfboard and bicycle carriers. The idea is, you enjoy what you're doing and let the Fiat Qubo deal with all the practicalities.





Fiat Qubo is a great travelling companion, not least because it delivers superb fuel economy and low emissions. The 75bhp 1.3 16v MultiJet diesel engine can go over 660 miles on a single tank of fuel! You'll also be able to travel 20,000 miles before the first service is due. Naturally this is a safe place to spend time too, with ABS (Anti Lock Braking) and EBD (Electronic Brake Distribution), ESP (Electronic Stability Programme – on diesel versions only) including ASR/MSR and Hill Holder, ISOFIX child seat attachments, automatic door locking, four airbags, rear head restraints, and three-point seat belts with pre-tensioner and load limiter all as standard.

1.4 8v (Petrol)

- Capacity (cc): 1360
- Emission level: Euro 5
- Maximum EC power: 73bhp at 5,200rpm
- Maximum torque CE: 118Nm at 2,600rpm
- Maximum speed: 96mph
- Fuel consumption* (mpg):
Urban cycle 34.4
Extra-urban 50.4
Combined 42.8
- CO₂ emissions*: 152g/km

1.3 Multijet 16v 95 (Diesel)

- Capacity (cc): 1248
- Emission level: Euro 5
- Maximum EC power: 95bhp at 4,000rpm
- Maximum torque CE: 200Nm at 1,500rpm
- Maximum speed: 105mph
- Fuel consumption* (mpg):
Urban cycle 57.6
Extra urban 78.5
Combined 68.9
- CO₂ emissions*: 107g/km

1.3 Multijet 16v 75 (Diesel)

- Capacity (cc): 1248
- Emission level: Euro 5
- Maximum EC power: 75bhp at 4,000rpm
- Maximum torque CE: 190Nm at 1,500rpm
- Maximum speed: 96mph
- Fuel consumption* (mpg):
Urban cycle 57.6/58.9**
Extra urban 78.5/76.3**
Combined 68.9/68.9**
- CO₂ emissions*: 107g/km**

**With robotised Dualogic™

* Fuel consumption and CO₂ figures are obtained for comparative purposes in accordance with EC directives/regulations and may not be representative of real-life driving conditions. Factors such as driving style, weather and road conditions may also have a significant effect on fuel consumption.

The Fiat Qubo is all about freedom of choice, so which model suits you best? The Fiat Qubo Active comes with Radio/CD/MP3 player and body-coloured electrically adjustable heated door mirrors.

The Fiat Qubo MyLife adds a host of features including air conditioning, foglights, leather steering wheel and steering wheel mounted audio controls. Then there's the Trekking which adds features such as Traction+, roof bars and dark tinted rear windows.

Active

Main standard equipment

- ABS with EBD (Electronic Brake Distribution)
- Power assisted steering
- Driver, passenger and front side airbags
- Double sliding doors
- 15" steel wheels
- Split (60/40) rear seats
- Radio/CD/MP3 player
- Electric front windows
- Remote central locking with dead locks
- Height- and reach-adjustable steering wheel
- Trip computer
- Front arm rest
- Height-adjustable driver's seat
- Driver's seat lumbar support
- Body-coloured electrically adjustable heated door mirrors

MyLife

Main standard equipment (in addition to Active)

- Air conditioning
- 16" alloy wheels
- Blue&Me™ handsfree system with USB port
- Leather steering wheel with mounted audio controls
- Front foglights
- Predisposition for Blue&Me TomTom

Trekking

Main standard equipment (in addition to MyLife)*

- Traction+
- Longitudinal roof bars
- Luggage retaining net
- Standard size spare wheel
- Dark tinted rear windows

*Trekking includes 15" alloys

The Fiat Qubo has everything to characterise so you can really make it your own. With many original features and a huge range of accessories, from anodised aluminium interior trim mouldings, to an iPod® holder or fragrance dispenser, the Fiat Qubo will meet your needs, whatever they may be. This doesn't stop with the interior; there's a choice of ten exterior colours, and naturally there is a selection of roof bars and racks to help accommodate your leisure pursuits too.



Anodised aluminium mouldings give the interior a hi-tech feel.



Tough, stylish aluminium kick plates feature the signature Qubo logo.



Velvet mats embroidered with the Qubo logo are a luxurious touch.



With support for your iPod® that ensures your player is always safe and at your fingertips.



The fragrance dispenser offers a wide range of scents.

FIAT CUSTOMER BENEFITS

When you buy a new Fiat, you buy more than just a car. Behind every car we sell there is the reassurance of a whole range of customer benefits and services designed to make the ownership of your Fiat as enjoyable, affordable and trouble free as possible.

2 YEAR, UNLIMITED MILEAGE, MANUFACTURER WARRANTY

Any repairs required as the result of faulty materials or manufacturer is carried out free of charge – both for parts and labour.

3RD YEAR DEALER WARRANTY*

This warranty covers most electrical and mechanical components in the third year, or up to 60,000 miles from the date of first registration, whichever occurs first. The warranty is provided free of charge and is subject to conditions (full details are available from your Fiat dealer).

3 YEAR PAINTWORK WARRANTY

Any paintwork defects due to faulty materials or manufacturer will be rectified free of charge during the first 3 years.

8 YEAR ANTI PERFORATION WARRANTY

Any perforation of the bodywork due to corrosion will be repaired free of all parts and labour charges during the first 8 years.

12 MONTH PARTS AND REPAIR GUARANTEE

All genuine Fiat parts are guaranteed for 12 months, or the duration of the prevailing warranty on the vehicle, as are repairs carried out by any Fiat dealer using genuine parts.

FIXED SERVICE COSTS

All Fiat dealers operate a “Menu Pricing” programme, which guarantees fixed service and replacement costs, with no hidden extras. The price you see is the price you’ll pay, unless you have given your consent for further work to be carried out.

FIAT INFORMATION AND CUSTOMER SERVICE

Contact CIAO FIAT on 00 800 3428 0000[†] if you are a customer or prospective customer. CIAO FIAT provides you with access to all our products and services in the UK and can be used even when you are abroad (the number can be called from most countries in Europe).

The call is free from land lines in the UK and all Europe (except Switzerland). Mobile network charges may vary depending on whom your contract is with.

Fiat also believe it is important to stay in contact with you and will, subject to your agreement, telephone you from time to time to ensure that you are happy with your Fiat and the service you receive from your dealer. You can also access information about Fiat products and services online on our comprehensive website at www.fiat.co.uk

INSURED PRODUCTS AND SERVICES

The following insured products and services are provided through Fiat Financial Services.*

FIAT CUSTOMER BENEFITS 1 YEAR’S AA ASSURANCE COVER

All new Fiats come with 1 year’s AA Assurance cover, which includes Roadside Assistance, Home Start, Relay, Relay Plus, European Cover and Accident Management.

This insured service is provided on a free of charge basis and is available 24 hours a day, throughout the year. AA Assurance also provides free access to travel information, legal advice and technical information.

MOTOR INSURANCE

Comprehensive car insurance is available at competitive premiums, with up to 65% No Claims Bonus transferable from your existing policy after five consecutive years of claim free driving.

For a quotation, either ring 0870 241 3805, or visit online through www.fiat.co.uk

FINANCE PLANS

Fiat Financial Services offers a comprehensive range of financial plans to suit private and business customers alike. Fiat I-deal, Fiat Finance Lease, Fiat Lease Purchase and traditional Hire Purchase can adapt to suit your individual requirements, whatever they may be.

For example, you may wish to include the cost of one of our Credit Protection Plans (both Payment Protection and Asset Protection are available), which provides added security for you, your family and your investment. Your Fiat dealer will be pleased to design a specific plan for you.

Please ask for more information. Written quotations available on request.[†]

FIAT CONTRACT HIRE[‡] CONTRACT HIRE FOR THE BUSINESS USER

More and more businesses are turning to Contract Hire as a simple, tax-efficient way of financing their fleet. Contract Hire allows the use of a vehicle for a pre-determined fixed period and cost (subject to mileage and conditions) and has many features and benefits that your Fiat dealer will be delighted to discuss with you.

PERSONAL CONTRACT HIRE FOR THE USER CHOOSER

If you are a company car driver with a “User Chooser” policy, very competitive quotations can be obtained through Fiat Contract Hire.[‡]

At Fiat Contract Hire we also provide a full support service, including maintenance, relief vehicle, AA Assurance and accident management, saving you time to concentrate on running your business. For more information, please contact your Fiat dealer, or call 01753 486885.

Contract Hire finance facilities are available subject to credit approval. Written quotations are available from Fiat Contract Hire, 240 Bath Road, Slough, Berkshire SL1 4DX.

* Only applicable to UK vehicles sourced through Fiat Group Automobiles UK Ltd.

[†] Pan European Freephone number from all UK land lines. A minimum charge applies to calls made from mobiles based on network rates.

* Fiat Financial Services is a trading style of FGA Capital UK Ltd. FGA Capital UK Ltd is authorised and regulated by the Financial Services Authority for General Insurance.

[†] Credit available to anyone aged 18 or over, subject to status. A guarantee and/or indemnity may be required.

[‡] Fiat Contract Hire is a trading style of FGA Contracts UK Limited which is an appointed representative of FGA Capital UK Limited.

| | ACTIVE MYLIFE | ACTIVE MYLIFE | MYLIFE TREKKING |
|-------------------------------------|--|---|---|
| ENGINE | 1.4 8v (Petrol) | 1.3 MultiJet 16v 75 (Diesel) | 1.3 MultiJet 16v 95 (Diesel) |
| No. of cylinders, arrangement | 4, in line | 4, in line | 4, in line |
| Capacity (cc) | 1360 | 1248 | 1248 |
| Emission level | Euro 5 | Euro 5 | Euro 5 |
| Compression ratio | 10.5 : 1 | 16.8 : 1 | 16.8 : 1 |
| Max EC power: bhp (kW) @ rpm | 73 (54) @ 5200 | 75 (55) @ 4000 | 95 (70) @ 4000 |
| Max EC torque: Nm (kgm) @ rpm | 118 @ 2600 | 190 @ 1500 | 200 @ 1500 |
| Fuel system | Phased sequential Multipoint electronic injection with returnless system | Electronically controlled 'Common rail' MultiJet direct injection with turbocharger and intercooler | Electronically controlled 'Common rail' MultiJet direct injection with turbocharger and intercooler |
| TRANSMISSION | | | |
| Gearbox: no. of gears | 5+ reverse | 5+ reverse | 5+ reverse |
| Clutch | Hydraulic | Hydraulic | Hydraulic |
| Drive | Front | Front | Front |
| WHEELS | | | |
| Tires | 185/65 R 15 / 195/55 R 16 (MyLife) | 185/65 R 15 / 195/55 R 16 (MyLife) | 185/65 R 15 / 195/55 R 16 (MyLife) |
| SUSPENSION SYSTEM | | | |
| Front | Independent MacPherson type | Independent MacPherson type | Independent MacPherson type |
| Rear | Torsion beam | Torsion beam | Torsion beam |
| TANK CAPACITY | | | |
| Fuel tank capacity (l) | 45 | 45 | 45 |
| STEERING | | | |
| Turning circle (kerb to kerb) (m) | 10.55 | 10.55 | 10.55 |
| Turning circle (wall to wall) (m) | 11.11 | 11.11 | 11.11 |
| BRAKES – D (disc) – T (drum) | | | |
| Front (mm) | D 257 | D 257 | D 284 |
| Rear (mm) | T 203 | T 228 | T 228 |
| PERFORMANCE | | | |
| Top speed (mph) | 96 | 96 | 105 |
| Acceleration (0-62 mph) (secs) | 15.2 | 15.2 | 12.2 |
| FUEL CONSUMPTION* | | | |
| Urban cycle mpg (l/100 km) | 34.4 (8.2) | 57.6 (4.9) 58.9 (4.8)† | 57.6 (4.9) |
| Extra-urban cycle mpg (l/100 km) | 50.4 (5.6) | 78.5 (3.6) 76.3 (3.7)† | 78.5 (3.6) |
| Mixed cycle mpg (l/100 km) | 42.8 (6.6) | 68.9 (4.1) 68.9 (4.1)† | 68.9 (4.1) |
| CO ₂ emissions (g/km) | 152 | 107 | 107 |
| DIMENSIONS | | | |
| Length (mm) | 3959 | 3959 | 3959 |
| Width (mm) | 1716 | 1716 | 1716 |
| Height (mm) | 1735 | 1735 | 1735 |
| Wheelbase (mm) | 2513 | 2513 | 2513 |
| Front track (mm) | 1462 | 1462 | 1464 |
| Rear track (mm) | 1464 | 1464 | 1465 |
| Luggage compartment volume (l) | 330-2500 | 330-2500 | 330-2500 |
| WEIGHTS | | | |
| Kerb weight DIN (kg) | 1255 | 1275 | 1275 |
| Towable weight – not braked (kg) | 400 | 400 | 400 |
| Towable weight – braked (kg) | 600 | 1000 | 1000 |

* Fuel consumption and CO₂ figures are obtained for comparative purposes in accordance with EC directives/regulations and may not be representative of real-life driving conditions.

Factors such as driving style, weather and road conditions may also have a significant effect on fuel consumption.

† Dualogic™ version

| | ACTIVE | MYLIFE | TREKKING |
|--|--------|--------|----------|
| STYLING | | | |
| Side rubbing strips | ■ | ■ | ■ |
| Inside door handles painted in anodised aluminium | - | ■ | ■ |
| Gear lever and oddment compartment surrounds painted in anodised aluminium | - | ■ | - |
| Central dashboard insert painted in anodised aluminium | - | ■ | ■ |
| Body-coloured bumpers | - | ■ | ■ |
| Body-coloured wing mirrors | ■ | ■ | ■ |
| Dark tinted rear windows | ○ | ○ | ■ |
| Metallic paint | ○ | ○ | ○ |
| Chargeable pastel paint | ○ | ○ | ○ |
| Longitudinal roof bars | ○ | ○ | ■ |
| 16" alloy wheels* | ○ | ■ | - |
| Anodised aluminium surrounds on the door panel speakers, side air vents, tweeters and wing mirror controls | △ | △ | △ |
| Velvet mats with car logo | △ | △ | △ |
| Aluminium kick-plate with car logo | △ | △ | △ |
| *Not suitable for snow chains | | | |
| COMFORT / FUNCTIONALITY | | | |
| Cruise control† | ○ | ○ | ○ |
| Dualogic™ gearbox† | ○ | ○ | - |
| Follow me home headlights | ■ | ■ | ■ |
| Trip computer | ■ | ■ | ■ |
| Third rear seat with 3-point seat belt | ■ | ■ | ■ |
| Storage compartment in doors | ■ | ■ | ■ |
| Swivel-opening rear quarter windows | ■ | ■ | ■ |
| Locking fuel cap | ■ | ■ | ■ |
| Tailgate with heated rear window and rear wiper | ■ | ■ | ■ |
| Glazed asymmetrical twin rear doors with heated rear window and rear wiper | ○ | ○ | - |
| Sliding side doors | ■ | ■ | ■ |
| Rear parcel shelf | ■ | ■ | ■ |
| Luggage retaining net | ○ | ○ | ■ |
| Power steering | ■ | ■ | ■ |
| Height-adjustable headlamps | ■ | ■ | ■ |
| Smoking kit | ○ | ○ | ○ |
| 12V power supply | ■ | ■ | ■ |
| Reach and rake-adjustable steering wheel | ■ | ■ | ■ |
| Remote central locking | ■ | ■ | ■ |
| Electric front windows | ■ | ■ | ■ |
| Body-coloured electrically adjustable heated door mirrors | ■ | ■ | ■ |
| Driver's seat with lumbar adjustment | ■ | ■ | ■ |

† 1.3 16v MultiJet only

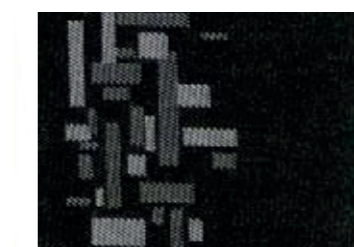
| | ACTIVE | MYLIFE | TREKKING |
|--|--------|--------|----------|
| COMFORT / FUNCTIONALITY | | | |
| Air conditioning | ○ | ■ | ■ |
| Height-adjustable driver's seat | ■ | ■ | ■ |
| Driver seat armrest | ■ | ■ | ■ |
| Split (60/40) and removable rear seat | ■ | ■ | ■ |
| Removable ceiling light | ○ | ○ | ○ |
| Particulate filter (DPF) for diesel engine | ■ | ■ | ■ |
| Dualogic™ robotic gearbox (on 75bhp MultiJet diesel engine)† | ○ | ○ | - |
| Standard size spare wheel | ○ | ○ | ■ |
| Transverse roof bars | △ | △ | △ |
| Ski carrier for 3-4 pairs | △ | △ | △ |
| Windsurf carrier | △ | △ | △ |
| Cycle carrier | △ | △ | △ |
| iPod® holder | △ | △ | △ |
| SAFETY | | | |
| Rear seat belts with retractors | ■ | ■ | ■ |
| ABS + EBD (Electronic Brake Distribution) | ■ | ■ | ■ |
| Driver's airbag | ■ | ■ | ■ |
| Passenger airbag with deactivation | ■ | ■ | ■ |
| Front side airbags | ■ | ■ | ■ |
| Automatic door locking at speeds of over 13 mph | ■ | ■ | ■ |
| Rear head restraints | ■ | ■ | ■ |
| ISOFIX universal anchoring system for child seats | ■ | ■ | ■ |
| Deadlocks | ■ | ■ | ■ |
| Front fog lights | ○ | ■ | ■ |
| Traction+ | - | - | ■ |
| ESP (Electronic Stability Programme) including ASR/MSR and Hill Holder | ■ | ■ | ■ |
| Alarm | ○ | ○ | ○ |
| Rear parking sensors | ○ | ○ | ○ |
| AUDIO / TELEMATICS | | | |
| Radio with CD and MP3 format, 40W hi-fi sound system, 4 speakers + 2 tweeters | ■ | ■ | ■ |
| Blue&Me™: Bluetooth® technology hands-free system with steering wheel mounted controls, instrument panel with multifunctional display, MP3 file reader with USB port, predisposition for Blue&Me TomTom and leather steering wheel | ○ | ■ | ■ |

■ = Standard ○ = Option - = Not available △ = Accessory

Standard equipments and options

| | ACTIVE | MYLIFE | TREKKING |
|-------------------------------|-------------------|---------------------|-----------------------|
| | Cloth | Cloth | Cloth |
| | Black Tangram 217 | Red/Black Axell 220 | Black/Orange Sail 232 |
| PASTEL COLOURS | | | |
| 168 Rumba Red | ■ | ■ | - |
| 249 Ambient White | ■ | ■ | - |
| SPECIAL PASTEL COLOURS | | | |
| 479 Line Blue | ■ | - | ■ |
| 551 Funky Orange | ■ | ■ | - |
| METALLIC COLOURS | | | |
| 112 Wonky Techno Orange | - | - | ■ |
| 293 Bolero Red | ■ | ■ | - |
| 355 Disco Green | ■ | - | ■ |
| 448 Fox-trot Azure | ■ | - | ■ |
| 487 Cool Jazz Blue | ■ | - | ■ |
| 612 Minimal Grey | ■ | ■ | - |
| 632 Rockabilly Black | ■ | ■ | - |

■ = Combination available - = Not available



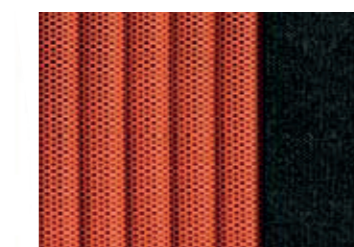
217 BLACK TANGRAM



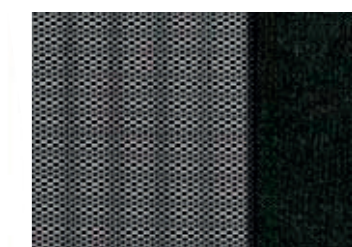
220 RED / BLACK AXELL



288 GREY / BLACK AXELL



232 BLACK / ORANGE SAIL



372 BLACK / GREY SAIL