



JEEP® WRANGLER

AUTHENTIC JEEP ACCESSORIES



HARD-CORE 4X4.



Overseas vehicle shown.

SHOWN ON COVER: CLASSIC FIVE-HOLE BLACK CAST ALUMINIUM WHEEL, SATIN BLACK GRILLE, HALF-DOOR KIT, RECTANGULAR LED WINDSHIELD-MOUNTED OFF-ROAD LIGHTS, WARN, WINCH, TOW HOOKS, OFF-ROAD BUMPERS, AND SKID PLATE.

SHOWN HERE: VEHICLE WITHOUT DOORS. PLEASE CHECK STATE AND LOCAL REGULATIONS PRIOR TO DOOR REMOVAL AND USE.



6



7



As a Jeep® Wrangler owner, your natural instinct is to steer clear of the painted lines. That's just where Authentic Jeep Accessories thrive.

1. SATIN BLACK GRILLE.

Enhance the rugged look of your Wrangler with this iconic seven-slot grille available in Satin Black. Includes Satin Black Jeep Logo. 82213772

2. WARN WINCHES.⁽²⁾

Our extensive lineup features four winches with Haws Fairleads. Each winch features a sealed water-resistant, die-cast body structure. Optional synthetic winch line is also available.

Warn 9.5ti Thermometric (pictured)	82209325AD
Warn M 8000	82202191AC
Warn XD9000i	82202612AC
Warn 9.5XP	82209909AC

3. TOW HOOKS.

Heavy-duty Black steel hooks mount to your Wrangler's frame and are tested to handle up to 1.5 times the gross vehicle weight rating. 82210256

4. OFF-ROAD BUMPERS.

Heavy steel Front and Rear Bumpers feature compact dimensions for excellent ground clearance. The Front Bumper features fog lights and a grille guard and is tested to be compatible with the air bag system. Front Bumpers are available with and without an integrated winch mount. The Rear Bumper clears all our hitch receivers and is equipped with tow eyes. For added convenience, a Swing-Away Tyre Carrier that fits up to a 37-inch spare tyre is also available, sold separately.

Front Off-Road Bumper (pictured)	82213575
Front Off-Road Bumper (w/o winch mount)	82213578
Rear Off-Road Bumper	82213579
Rear Off-Road Bumper (Swing-Away Tyre Carrier Compatible)	82213580

5. SKID PLATE.

Designed to slide over obstacles, the Black Skid Plate is constructed of heavy-duty steel to help protect the steering gear.

82213581

6. CLASSIC FIVE-HOLE WHEEL.

Made to accommodate wider tyres with 4.6-inches of backspacing. Available in Black or Silver.

Black P5156183

7. WINCH RECOVERY GEAR AND BAG.

This off-road recovery gear kit is a must for any Jeep owner. Kit includes heavy-duty snatch block pulley, 30-foot recovery strap, tree trunk protector, a pair of D-rings, winch line dampener, and recovery gloves. Also includes a durable bag, featuring the Jeep logo, to keep your gear neatly organised and ready when you need it.

AUS00TMAXORRK

8. BLACK FUEL FILLER DOOR.

Unique Fuel Filler Door adds contrast to any Wrangler body colour and covers the existing fuel filler opening. Also available in Chrome.

2-Door Black Fuel Filler Door	82210285AB
4-Door Black Fuel Filler Door	82210609AB

9. HITCH RECEIVER.⁽³⁾

This Hitch Receiver can tow up to 2,300 kg⁽⁴⁾ with proper trailering equipment and can be used with Off-Road, Tubular, or production Bumpers.

82213450

10. SWING-AWAY TYRE CARRIER.

Carrier is designed to move the weight of the spare from the body to the frame. Accommodates up to a 37-inch spare tyre and mounts to rear Off-Road Bumper.

82211832AB

⁽¹⁾ Check state and local regulations for installation and use.

⁽²⁾ Heavy-duty battery, springs and shock absorbers recommended for winch installation. Off-Road Bumper required for mounting.

⁽³⁾ Check User Guide for hitch type, load capacity and heavy-duty equipment required. Do not exceed rated tow capacity of the vehicle as equipped.

⁽⁴⁾ 1,000 kg towing capacity on all 2-door models. 2,000 kg towing capacity on 4-door petrol models. 2,200 kg towing capacity on 4-door diesel models with automatic transmission, 2,300 kg for manual transmission.

BEHOLD, THE CONQUERING HERO.



Overseas vehicle shown.
ALSO SHOWN ABOVE: HEAT REDUCTION HOOD. (82213135)



6

PRIMED FOR PERFORMANCE.

1. WINDSHIELD-MOUNTED OFF-ROAD LIGHTS HELLA® 500 OR 700.⁽¹⁾

These lamps provide brilliant performance and off-road durability. The lightweight material and powerful bulbs are shielded with an impactresistant ABS housing. The vapor-coated aluminum reflector ensures clear, bright light in all driving conditions. Set of two. Shown with included Hella light covers. Brackets sold separately; no drilling required.

Hella® 500 HELLA500
Hella® 700 HELLA700

2. PREMIUM FRONT OFF-ROAD BUMPER.⁽²⁾

Hard-core off-roaders can install this heavy-gauge, triple-coated steel front bumper. Designed to clear 37-inch tyres. Bumper is available with or without grille guard.

82212929

3. CHROME GRILLE.

This Chrome Grille adds head-turning good looks and meets the toughest corrosion-resistance requirements, with a design that won't adversely affect the cooling system.

82210558AD



7

4. CLASSIC FIVE-HOLE WHEEL.⁽³⁾

Made to accommodate wider tyres with 4.6-inches of backspacing. Available in Silver or Black.

Silver P5156183

5. ROCK RAILS.

Our rails offer great bodyside protection. Mounted at the same height as the body side, they don't reduce ground clearance. Rock Rails also feature a textured Satin Black finish.

82210575AD



8

6. PREMIUM REAR OFF-ROAD BUMPER AND TYRE CARRIER.

For enhanced protection on the highway and

the trail, this unique carrier is cleverly designed to allow separate installation of both the bumper and the tyre carrier. A built-in fluid-carrying system constructed from tough cross-link polyethylene can hold nearly 19-litres of liquid. Anti-vibration tie-rod adjustment helps keep everything tight and tidy.

82213580

7. HEAT REDUCTION HOOD.⁽⁴⁾

Three mesh vent areas allow heat to escape and add aggressive design appeal. Arrives fully E-coated and ready to paint. Use existing factory hardware to ensure a proper fit.

82213135

8. ROADSIDE SAFETY KIT.

Designed to be a valuable asset in a roadside emergency. Kit includes safety flashlight, fleece blanket, six-gauge jumper cables, safety triangle, flat and Phillips screwdrivers, pliers, two bungee cords, and gloves.

82212647

⁽¹⁾Check state and local regulations for installation and use.

⁽²⁾Four Warn® Winch models are available, sold separately.

⁽³⁾May require extended wheel flares. Please check state and local regulations and consult with your Mopar dealer prior to installation and use.

⁽⁴⁾Mopar Performance Parts are sold "as is" unless otherwise noted.

CHECK US OUT AT MOPAR.COM.AU

HAULS DIRT AND DREAMS WITH EQUAL EASE.



1. JK-8 TRUCK CONVERSION KIT:⁽¹⁾

Inspired by the Jeep® Scrambler CJ-8 of years past and the J-8 military Jeep vehicle, Mopar® brings you this exciting new Conversion Kit. It allows you to combine the best of both worlds and utilise the capabilities of a four-door Wrangler with the functionality of a durable two-seat pickup truck. Do-it-yourselfers can transform four-door Jeep vehicles with these ready-to-go parts, or have it installed by their Mopar dealer. The JK-8 Truck Conversion Kit includes:

1A. HARDTOP WITH FREEDOM TOP® PANELS.

Designed with comfort and convenience in mind, this removable hardtop features easy-to-remove Freedom Top panels and a sliding rear window. Hardtop features a smooth finish.

1B. BULKHEAD.

This body panel protects the interior of the truck, preventing items from sliding into the cabin, keeping the inside safe and secure.

1C. JK-8 INDEPENDENCE TRUCK BED FLOOR.

Length: 50 inches; Width: 44 inches between wheel wells. Shown with a spray-on bedliner.

1D. BODY PANELS.

Contains all the Body Panels needed to complete the exterior look of the truck. Body Panels and Hardtop require paint and body work to install.

JK-8 Conversion Kit 77070049AB



1A



1C

⁽¹⁾Mopar JK-8 Kit must be fitted after vehicle registration and purchaser should check with their local state regulatory's on engineering and certification (if required) prior to fitment. Fitment and painting is the purchaser's responsibility, vehicle not included in kit. Please refer to warranty (Mopar Parts & Accessories Warranty Booklet) inside the kit for Mopar JK-8 (77070049AB), if further information is required please refer to your local dealer.



1. BUMPER-MOUNTED LIGHT BAR.

This light bar frame bolts to existing holes for easy installation. No vehicle modifications, drilling, or cutting needed. Constructed from durable steel tubing. Each bar can hold up to three Off-Road Lights⁽¹⁾ (sold separately).

123220RR

2. WINDSHIELD-MOUNTED OFF-ROAD LIGHTS — HELLA® 500.⁽¹⁾

These five-inch lamps have everything it takes to provide brilliant performance and off-road durability. They're ideal for dark country roads and finding your way through the woods in your Wrangler. The light-weight material and powerful bulbs are shielded with an impact-resistant ABS housing. The vapor-coated aluminum reflector ensures clear, bright light in all driving conditions. Set of two. Shown with included Hella light covers. Brackets sold separately; no drilling required.

Hella® 500	HELLA500
Off-Road Light Bracket	82210556AB

3. WINDSHIELD-MOUNTED OFF-ROAD LIGHTS — HELLA 700.⁽¹⁾

This seven-inch version of the auxiliary lamp kit features a lightweight design, aluminum vapor-coated reflector, and sturdy shockproof housing for improved optics over the standard lens. It's ideal for off-road activity and includes two lamps, protective covers, 55W bulbs, wiring harness with switch, relay, and instructions. Brackets sold separately; no drilling required.

Hella® 700	HELLA700
Off-Road Light Bracket	82210556AB

RECTANGULAR LED WINDSHIELD-MOUNTED OFF-ROAD LIGHTS.⁽¹⁾

When you're traveling off the beaten path at night, it's important to have a clear picture of what lies ahead. For excellent illumination, choose these easy-to-mount LED lights. They offer low power consumption and provide a long life span. Water- and dust-

proof casing helps keep lights safe and secure. Set of two, covers included.

4. 4 LED LIGHTS

82213471

5. 6 LED LIGHTS

82213472

6. MIRROR RELOCATION BRACKETS.

Easily move your factory-installed mirrors from your doors to the body of your Wrangler. The no-drill design mounts to existing factory body bolts. Constructed of Black powder-coated steel and includes a Black steel filler plate for the door. Sold in pairs for both driver- and passenger-side mirrors.

102504RR

7. SIDEVIEW MIRROR SET.

These exterior, door-mounted mirrors are made of Black powder-coated steel and are identical to the production mirrors to help maintain the authentic look of your Wrangler. Mirror set sold in pairs and comes complete with hardware.

82213079

⁽¹⁾Check state and local regulations for installation and use.

OUT HERE, ITS CAPABILITY SHINES.





1. CHROME GRILLE.

This Chrome Grille adds head-turning good looks and meets the toughest corrosion-resistance requirements, with a design that won't adversely affect the cooling system.

82210558AD

2. STAINLESS STEEL HOOD LATCHES.

Add a touch of style to your Wrangler's front end. These hood latches are stainless steel and designed to replace the standard factory latches. Thick, corrosion-resistant, and polished to a keen shine with an integrated, molded rubber tension strap.

111606RR

3. CHROME MIRROR COVERS.

Reflect your personal sense of style with these bright Chrome covers that meet Jeep brand standards for quality, fit, and finish.

82210469AC

4. CHROME DOOR HANDLE INSERTS.

Reflect your good taste with these two-piece inserts that fit snugly into your Wrangler's door handles and push buttons. The kit contains six or ten pieces, one set for each door. Available for two- or four-door models.

82212490

5. CHROME TUBULAR SIDE STEPS.

These premium steps are constructed of four-inch oval chromed aluminium and are designed to mount securely with corrosion-resistant steel mounting brackets. Steps feature textured stepping surfaces and step pads with Jeep logo. Also available in Satin Black for two-door and four-door Wranglers.

2-Door Chrome Tubular Side Steps 82210563AF
 4-Door Chrome Tubular Side Steps 82210564AD

6. PREMIUM CHROME WHEEL.

Our 18-inch wheel features a seven-spoke design with long-lasting shine and is machined to match your vehicle's exact

specifications for a balanced ride.

82210001

7. FRONT AND REAR CHROME TUBULAR BUMPERS[®]

Proof that appearances are everything, these bumpers feature corrosion-resistant tubing and are also available in Satin Black.

Front Chrome Tubular Bumper 82211923AD
 Rear Chrome Tubular Bumper 82209913AF

8. CHROME FUEL FILLER DOOR.

This sculpted design covers the existing fuel filler opening and brightly complements any body colour. Also available in Satin Black.

2-Door Chrome Fuel Filler Door 82210284AB
 4-Door Chrome Fuel Filler Door 82210608AB

9. CHROME REAR-WINDOW HINGE COVERS.

Accentuate the look of your Wrangler's rear window with these easy-to-apply hinge covers. No tools, cutting, or drilling required.

1PUT1267

10. CHROME EXHAUST TIP.

Add a bright touch out back and round out your Chrome look with this popular accessory.

82208439AB

11. CHROME DOOR HINGE COVERS.

Overlays your vehicle's production door hinges for upgraded style without harming the paint.

1PUT1271

12. CHROME TAILLAMP GUARDS.

Make a stylish impact around town with added off-road protection. Also available in Satin Black.

82210268AC

13. CHROME TAILGATE HINGE COVERS.

Complete your Chrome updates when you accent the tailgate with these eye-catching covers.

1PUT1266

[®]These products are designed solely to enhance the appearance of the vehicle; they are not intended to prevent injury or damage in the event of an accident.



OFF-DUTY EXTENSION.

1. TENT KIT.

Outdoor lovers can enjoy their vehicle to the max with this tent. The tent includes full rain fly, overhead storage net, inside pockets and storage bag. The tent attaches to the rear of your Jeep Wrangler, creating extra storage space. Tent stands alone when detached from the vehicle if you need to drive away from the campsite.

82212604

2. MOLDED SPLASH GUARDS.

Help protect the body of your vehicle with guards that match the wheel flare's Black finish and feature the Jeep logo. Sold in pairs, for front or rear of vehicle.

Front 82210233
Rear 82210232

3. MOLDED TUBE STEPS.

These Black Molded Tube Steps provide wide skid-resistant stepping surfaces. Easily installs into existing mounting holes.

4-Door Molded Tube Side Steps 82210571AC

4. TUBULAR SIDE STEPS.

Extra-wide stepping surfaces help prevent slipping. Available for two-door and four-door Wranglers. Choose Satin Black (shown) or Chrome.

2-Door Satin Black Tubular Side Steps 82210561AF
4-Door Satin Black Tubular Side Steps 82210562AF

5. ROCK RAILS.

Our rails offer great bodyside protection. Mounted at the same height as the body side, they don't reduce ground clearance. Rock Rails also feature a textured Satin Black finish.

2-Door Rock Rails 82210574AD
4-Door Rock Rails 82210575AD



2



3



4



5



6. SATIN BLACK GRILLE.

Enhance the rugged look of your Wrangler with this iconic seven-slot grille available in Satin Black. Includes Satin Black Jeep logo. 82213772

7. FRONT AIR DEFLECTOR.

This popular accessory lets you say "yes" to rugged style and "no" to road spray, dirt, and other damaging debris.

82210277AB

8. CHROME GRILLE INSERTS.

Turn your Wrangler grille into a work of art. Easy to install. Also available in Black.

82210568AD

9. FRONT END COVER AND V-HOOD COVER.

Fit the contours of your Wrangler's front end.

82210318AB

10. & 11. FRONT AND REAR BLACK TUBULAR BUMPERS.⁽¹⁾

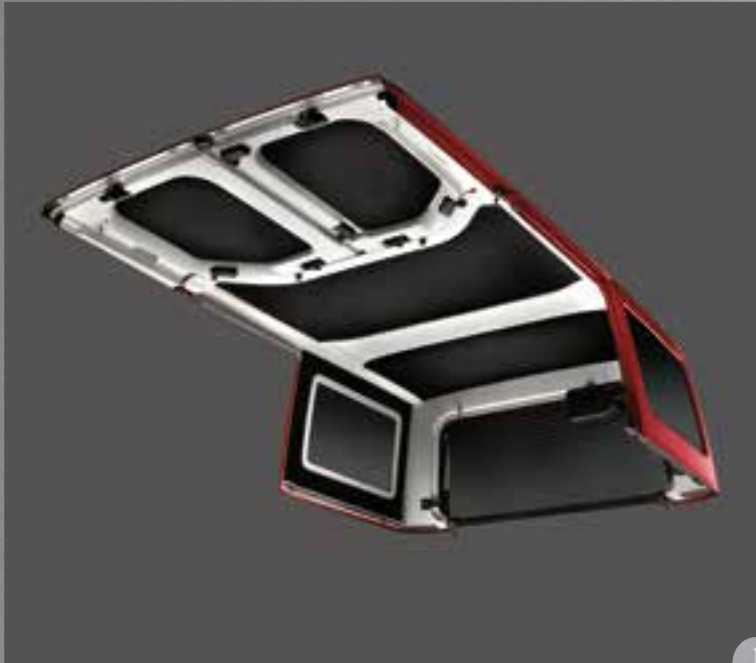
Constructed of rugged mandrel-bent tubing and match the contours of your Wrangler's body perfectly. Available in Chrome and Black.

Front Black Tubular Bumper	82211924AC
Rear Black Tubular Bumper	82209915AE
Front Chrome Tubular Bumper	82211923AD
Rear Chrome Tubular Bumper	82209913AF

⁽¹⁾These products are designed solely to enhance the appearance of the vehicles; they are not intended to prevent injury or damage in the event of an accident.



CHECK US OUT AT MOPAR.COM.AU



WIDE-OPEN PERSONALITY.

1. HARDTOP HEADLINERS.

Enhance the appearance of your Wrangler with this extremely durable headliner. It also boosts the efficiency of your air conditioning and helps keep road noise to a minimum. Provides a finished appearance with 1/2-inch-thick non-woven cushioning and finished edges.

2-Door 82212463AB
4-Door 82212464AB

2. STANDARD SOFT TOP.

Tough soft top features two quick-release header latches to raise and lower the top with minimum effort. Zip-out windows, heavy-duty seams, and an exclusive door frame system minimise wind noise and water leaks. Identical to the production soft top, the Sunrider® feature is also available.

2-Door 82213649
4-Door 82213651



3. BLACK OR BODY-COLOUR HARDTOP.

The premium hardtop features dark-tinted glass side-quarter windows and a glass liftgate. A rear wiper and defroster are also included in the kit. Identical to production hardtop.

2-Door (primed surface for paint) 82212533
4-Door (primed surface for paint) 82212531

4. SOFT TOP BOOT.

The boot protects your soft top when it's folded down and includes a special zippered pouch to store your soft-top windows.

2-Door 82209911
4-Door 82209912



5. HOOD PROP KIT.

Eliminate your Wrangler's single hood-prop rod with this kit. Holds your hood open at a convenient angle and includes two gas struts and mounting hardware.

82212798



GO FROM THE OUTSIDE IN.

1. CAB COVERS.

Weather-resistant quality nylon, available in Black or sun-reflective Silver.

2-Door Black Cab Cover	82210321
4-Door Black Cab Cover	82210323
2-Door Silver Cab Cover	82210322AB
4-Door Silver Cab Cover	82210324AB

2. SUN BONNET.

Durable soft-top material features an excellent seal to the windshield header.

2-Door Sun Bonnet	82209928
4-Door Sun Bonnet	82210542

3. HARDTOP STORAGE DOLLY.

Holds a hardtop, Freedom Top® panels, and two doors. The dolly features large caster wheels and includes a zippered cover.

2-Door	82210644
4-Door	82210645

4. WINDOW STORAGE BAG.

Holds and protects your three removable soft-top windows.

2-Door	82210327
4-Door	82210326

5. FREEDOM TOP STORAGE BAG.

Keeps your Wrangler's Freedom Top organized and protected, and stores behind the rear seats.

82210325AD

6. PREMIUM CARPET FLOOR MATS.

This plush 20-oz carpet mat is available in Dark Slate Gray.

2-Door	82211161AB
4-Door	82211160AB

7. ALL-WEATHER HEAVY-DUTY MATS.

Mats feature a custom design that helps prevent water, snow, and mud from damaging your Wrangler's carpet. Available in Dark Slate Gray.

2-Door	82211508AB
4-Door	82211509AB





1



2

SHOW YOUR PRIDE.

1. & 2. WRANGLER HOOD DECALS.

These stylish hood decals with Jeep® identity add a bold complement to your Wrangler hood — and help reduce sunlight glare.

Black Hood Decal 82212890
Silver Hood Decal 82213199

3. DOOR SILL GUARDS.

These stainless steel guards protect your door sills and are etched with the Jeep logo.

2-Door 82210108AC
4-Door 82210142AC

4. BLACK DOOR SILL GUARDS.

Get great interior door sill protection in a durable Black plastic guard that features the Jeep logo.

2-Door 82210104
4-Door 82210106

5. AUTHENTIC JEEP ACCESSORIES EMBLEM.

Let everyone know your accessories are the real deal. Aluminium emblem features Silver lettering on Black background.

82211201

6. GRAB HANDLES.

These heavy-duty grab handles feature an embroidered Jeep logo, easy-to-hold rubber grips, and durable nylon webbing. Attaches directly to Sport Bar, sold separately.

Grab Handles (Set of 2) 82211740
Grab Handles w/ Clothes Hooks (Set of 2) 82207660AB



3



4



5



6



7



8

7. SPARE TYRE-MOUNTED BIKE CARRIER.

This unique carrier mounts securely onto your spare tyre. Easily carries two bikes with crossbars and includes an anti-theft cable.

82212832

8. SPARE TYRE-MOUNTED SKI CARRIER.

Holds up to four pairs of skis with anodised aluminium construction and integrated locks.

82212834



BRIGHT IDEAS.

1. WHEEL LOCKS.

Includes five new lug nuts and a special fitting key to offer maximum wheel- and tyre-theft protection.

82211405

2. SATIN CHROME VALVE STEMS.

It's a small touch that offers large style cues, with the Jeep® logo prominently displayed on the top.

82213628

3. & 4. CLASSIC FIVE-HOLE CAST ALUMINIUM WHEEL¹⁾

As timeless as the Wrangler itself, this 17 x 8.5-inch wheel design is stylish and sporty all at once. Made to accommodate wider tyres with 4.6 inches of backspacing.

Bright Silver	P5155977
Black	P5156183

5. & 6. CLASSIC FIVE-SPOKE WHEEL.

A classic five-spoke 17, 18 and 19- x 8.5-inch design gives your vehicle a true off-road feel. Made to accommodate wider tyres.

Bright Silver	P5155981
Dark Argenta	P5155982

7. 17-INCH HULK WHEEL.

82210355AB

8. 18-INCH CHROME-ALUMINIUM WHEEL.

82210001

9. 17-INCH WINTER/OFF-ROAD WHEEL.

An inexpensive stamped steel wheel for winter/off-road tyres.

52124455AB

¹⁾May require extended wheel flares. Please check state and local regulations and consult with your Mopar dealer prior to installation and use.





ADD SOME PERSONALITY.

1. CUSTOMISED TRIM.

Wrangler owners are folks with plenty of personality who like to get out and enjoy life everywhere they go. Here's a perfect way to customise the cabin of your Wrangler to reflect your individuality and fun-loving nature. A wide variety of options are available, so you can make your Wrangler a true reflection of your personal taste. Easy installation makes customizing your interior even more appealing.

1A. HVAC TRIM RINGS.

1B. GRAB HANDLE TRIM.

1C. DOOR HANDLE TRIM.

Trim are available in Red, Blue, Yellow, Tan, Camo, and Carbon Fibre.

Red (4-Door)	82212837
Blue (4-Door)	82212839
Yellow (4-Door)	82212836
Tan (4-Door)	82212838
Camo (2-Door)	82213112
Camo (4-Door)	82213110
Carbon (2-Door)	82213111
Carbon (4-Door)	82213109



1A



1B



1C

2. SPARE TYRE COVER.

Tyre cover material matches your soft-top colours and fabrics. All covers feature an elastic anchor.

Black w/ White Jeep Logo	82209953AB
"Fun is standard, Pavement is optional."	82210886AB
Smiley Face w/ Jeep Logo	82212306
Rubicon Logo	82212429
Sahara Logo	82212321
Arctic Logo	82213230
Oscar Mike Logo	82213376



2

Overseas vehicle shown.

CHECK US OUT AT MOPAR.COM.AU





Overseas vehicle shown.



2



3



4

TECHNOLOGY THAT WORKS FOR YOU.

1. AMBIENT LIGHT KIT.

These LED lights mount under the dash to add a perfect amount of accent lighting to both the driver and front-passenger footwells. Eight colour settings and low/high lighting intensity let you select one perfect interior ambience.

82212347

2. KICKER® SOUND SYSTEMS.

KICKER® speakers and upgrade packages have been designed specifically for your Jeep® vehicle, so you get automotive sound the way it was intended. Best of all, KICKER parts install easily: bolt them in and then plug them in. No cutting or soldering is required! Consult your dealer to determine the right system for your vehicle.

3. MEDIA CENTRE 730N (RHP).⁽¹⁾

CD/DVD/MP3/HDD/NAV radio with 6.5-inch touch screen, enhanced GPS Navigation with Voice Command, 30GB hard drive (4,250-song capacity), album artwork, audio input jack, remote USB port, Uconnect™ Voice Command⁽²⁾ of hands-free phone⁽³⁾ music, and Bluetooth® streaming audio.

82213278

4. UCONNECT® PHONE.

Talking on the phone while driving has never been more convenient or more responsible. Uconnect Phone is the in-vehicle, voice-activated communication system that allows you to talk on your Bluetooth-compatible phone virtually hands-free. Call contacts in your phone's address book⁽⁴⁾ just by saying their name. Select radio stations and navigation⁽⁴⁾ destinations using voice commands.

82212164

⁽¹⁾In-dash DVD viewing capability is not available in all states. See your dealer for details.

⁽²⁾Requires Uconnect Phone.

⁽³⁾Phone must support Bluetooth Phone Book Access Profile (PBAP).

⁽⁴⁾When navigation features are equipped on your vehicle.

CHECK US OUT AT MOPAR.COM.AU

THE GENUINE DIFFERENCE.

A passion for uncompromising performance and quality is the essence of the genuine difference and it's built into every Mopar[®] part and accessory we make. Every genuine Mopar accessory is original equipment, which means that every Mopar accessory is designed by Jeep[®] engineers, the people who know your vehicle better than anyone else.

OUR PRODUCT IS A RESULT OF UNCOMPROMISING STANDARDS.

Mopar accessories are manufactured with superior finish and exact vehicle match, as well as in the integrated fit that comes from utilising the same computer modelling technology that was used to design your vehicle.

OUR PROCESS IS AN ADHERENCE TO STRICTER TESTING.

Mopar accessories are subjected to rigorous evaluations, which include demanding salt bath corrosion tests, impact performance tests and harsh on and off-road durability testing. All genuine Mopar accessories are designed so that they will not adversely affect your vehicle's original performance specifications, such as engine cooling and proper air deployment, which is a common problem with aftermarket accessories.

OUR PROMISE IS DEMONSTRATED IN OUR SUPERIOR WARRANTY COVERAGE.

New Jeep vehicles fitted with genuine accessories by Mopar at point of purchase are covered by a 3 year/100,000 km New Vehicle Limited Warranty or a 12 month Basic Limited Warranty, which ever is more favourable to you. These simple warranties are supported by every authorised Jeep dealership in Australia. That's a promise aftermarket brands simply can't make. Whether you're looking to enhance your vehicle with premium protection, convenience, style or entertainment, choose the Genuine Difference.

YOUR CONSUMER RIGHTS.

The benefits given to you in this Warranty are in addition to, and do not detract from, any rights and remedies that you may have under Australian consumer protection laws. Our goods come with certain guarantees that cannot be excluded under the Australian Consumer Law. You are entitled to a replacement or refund for a major failure and for compensation for any other reasonably foreseeable loss or damage. You are also entitled to have the goods repaired or replaced if the goods fail to be of acceptable quality and the failure does not amount to a major failure. This Warranty:

- is not intended to change or exclude any statutory consumer rights that cannot be lawfully changed or excluded;
- is independent of any warranty that may be provided by the seller, for which it carries sole responsibility; and
- does not affect your rights against the seller, including any mandatory statutory rights you may have against the seller under consumer laws.



All product illustrations and specifications are based upon current information at the time of publication approval. Although descriptions are believed correct, accuracy cannot be guaranteed. Chrysler Australia Pty Ltd reserves the right to make changes from time to time, without notice or obligation, in prices, specifications, colours, materials and to change or discontinue accessories. See your dealer for details. © 2013 Chrysler Group LLC. All rights reserved. Jeep, the Jeep grille, Mopar, Wrangler, Overland, Pentastar and Uconnect are registered trademarks of Chrysler Group LLC. Thule is a registered trademark of the Thule Group. KICKER and the KICKER logo are registered trademarks of Stillwater Designs and Audio, Inc. Bluetooth is a registered trademark of Bluetooth SIG, Inc.