

FALCON UTE



Go Further



Falcon XR6 Turbo Ute* shown in Kinetic with optional Luxury Pack (includes 19" alloy wheels).

When the work day is over, the Falcon Ute comes into its own. Nothing proves it more than the Falcon XR Ute. Slick design, low stance and full body styling kit meets an 8" colour touch screen, car-like comfort and superb driving performance. Inside and out, it takes fun seriously.

*The production of the FG X Falcon Ute MKII ended in July 2016. Because of this, certain models, colours and options may not be available. Please consult with an authorised Ford dealer for the most up to date information about features, specifications, prices, optional equipment and availability before you decide to place an order.

Work hard

Get the job done with the Falcon Ute. Tough, powerful and always ready for work. 5



Falcon XR6 Cab Chassis shown in Lightning Strike with optional aluminium tray.

Falcon Ute has the brute strength and power to tackle just about any job going. There are payloads of up to 1 tonne and towing capacities of up to 2,300kg.# And with its car-like comfort, dynamic handling and a host of smart on-board technologies, working conditions have never been better.

#Braked towing capacity of vehicles with optional automatic transmission, when fitted with Genuine Ford heavy duty towpack including load levelling kit. Subject to State and Territory regulations.

A real workhorse

Built for heavy payloads and with serious towing power, the Falcon Ute means business.



Falcon XR6 Styleside Box shown in Kinetic. Falcon Ute Cab Chassis shown in Lightning Strike with optional aluminium tray.

Whether you're loading up the tools or towing the boat, the Falcon Ute is a true workhorse. The Styleside Box has a tough, fully integrated bedliner to protect your work equipment against daily wear and tear. And with the Cab Chassis option, you can choose the factory fitted aluminium tray or tailor something for your own specific needs.

Car-like comfort

The perfect antidote to a long day on the job, the Falcon Ute's interior is smart, stylish and comfortable. 9



Falcon XR Ute interior shown with manual transmission and optional Luxury Pack.

After a long day on the job, the 4-way power adjustable driver's seat is the perfect place to be. Enjoy a long, engaging drive or simply relax in the peace and quiet of the ergonomically designed interior. The spacious cabin in the Falcon Ute maximises space and comfort drawing you in from the moment you turn the key.

Human technology

Intuitive controls put the driver in full command of comfort, climate and a whole range of driving aids and information. ¹¹



Hands-free music and entertainment.

With the latest in voice control and music streaming technology, your music is now as portable as you are. With two USB docks and iPod® integration, DAB+ digital radio, and Bluetooth® streaming capabilities, SYNC® 2 allows you to use simple voice commands to listen to your tunes. So now you can hear what you want to hear, when you want to hear it, all without taking your hands off the steering wheel.



Voice activated climate control.

Travel in complete comfort with a climate control system that allows the driver and passenger to set and maintain the optimal temperature without lifting a finger using SYNC® 2's voice control.



Hands-free phone.

Hands-free voice control lets you concentrate on the road while making phone calls. SYNC® 2 can connect with your mobile phone and let you seamlessly transfer calls between your car's audio system and phone. You can call your friends and family by name, and never miss a moment.



XR6 Turbo interior shown.

Voice activated satellite navigation.

Let your sense of adventure guide you, not a lack of directions. The SYNC® 2 voice-activated navigation system combines GPS technology with 3D mapping to give you turn-by-turn navigation. Just say the word, and we'll take you there.



Make and take calls, ask the satellite navigation system to take you home, adjust the interior cabin temperature, or ask to hear your favourite artists. Just say the words and SYNC® 2 will take care of the rest. It can even automatically call emergency services and give them your GPS coordinates if you've been in a significant accident.* With an 8" colour touch screen and the ability to integrate with your phone or portable music device, SYNC® 2 ensures that you'll always be connected when you need it most.

*iPod is a trademark of Apple Inc. Please refer to ford.com.au for iPod compatibility. *Bluetooth® is a registered trademark of Bluetooth SIG Inc., and is used under licence. Customers should consult their Ford Dealer on the ability of their mobile phone handset to integrate with the Bluetooth® system prior to making a purchase decision. Please visit www.ford.com.au/compatibility for compatible devices. #To use Emergency Assistance, your phone must be paired and in mobile reception range.



4.0L Turbo I6 engine.

Delivers the type of performance that is guaranteed to get the adrenalin pumping. The turbo system creates an awesome 270kW of power and 533Nm of torque*



EcoLPI engine.

Designed to deliver serious power and torque but with reduced running costs and environmental impact, Ford's EcoLPI engine is a truly innovative piece of technology.

Power meets performance

A range of powerful engines and responsive transmissions, offer a smooth, car-like driving experience.



Falcon XR6 Turbo Ute shown in Emperor with optional towpack and accessory EGR hard tonneau cover.



4.0L I6 engine.

Fuel efficient, yet boasting 195kW of power and 391Nm of torque,* this engine is a real workhorse.



6-speed automatic transmission.

Employing advanced mechatronic units that deliver precise control and refinement to all 6 gears, the transmission ensures smooth delivery of power and torque for a thoroughly enjoyable drive.

Falcon Ute offers you a range of smart and technologically advanced engines, from the torquy 4.0L I6 and the breathtaking I6 Turbo, to the economical yet powerful EcoLPI. You can choose to get more involved with the responsive 6-speed manual transmission, or enjoy the smoothness of the 6-speed automatic. And with a car-like front suspension system and precision tuned rear suspension, you're guaranteed incredible control, power and an altogether smoother ride.

*Power and torque figures measure using premium unleaded fuel (95 RON).

EcoLPi smart engine technology

Enjoy outstanding power and torque while taking advantage of the fuel cost benefits of LPG. 15



EcoLPi Falcon XR6 Styleside Box shown in Lightning Strike.

Fuel cost comparisons.

With EcoLPi you could save on fuel costs compared with a petrol model, without sacrificing power and torque. The EcoLPi engine delivers an exhilarating 198kW of power and 409Nm of torque* to ensure you continue to get the performance you've come to expect in a tough workhorse.

Ford's EcoLPi engine uses LPG fuel for lower environmental impact and considerable cost savings. For three years, the EcoLPi engine was exhaustively tested with a fleet of trial vehicles driving over 550,000kms across every State and Territory in the nation, through tough climates and terrains. The result is an engine that delivers more power and torque than a petrol engine, as well as outstanding running cost savings and reduced carbon emissions.

*Power and torque figures measure using premium unleaded fuel (95 RON).

ECOLPI



Side head/thorax airbags.

Now standard across the range, side head/thorax airbags help to reduce the severity of injury to the driver and front passenger in the case of impact.

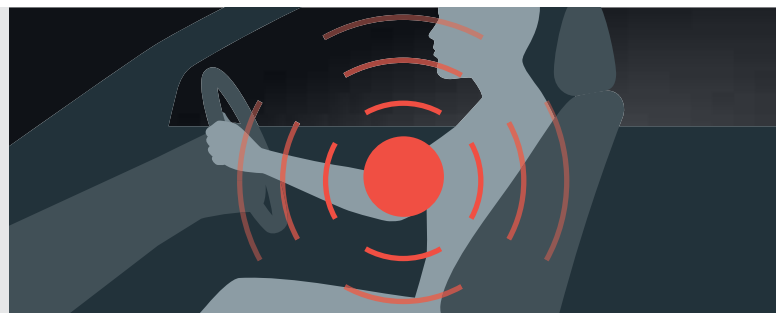


Immobiliser.

Standard on all models, the electronic immobiliser provides high security protection for your Falcon Ute.

Fatigue warning.

Designed to tackle one of the largest hazards to road safety, this feature sounds a warning to drivers to rest after prolonged periods of continuous driving.



Safety in the workplace

Safety is a priority. The ANCAP 5-star rated Falcon Ute is equipped with the very latest safety features and technologies.

Dynamic Stability Control (DSC).

DSC helps keep your vehicle under control, by strengthening your connection to the road to reduce over-steer and under-steer, and by tracking and adjusting the vehicle's movement using the Traction Control and ABS. Now standard across the range.

Beltminder™ system.

A simple but effective system that offers an audible reminder for passengers to fasten their seatbelts, increasing safety at all speeds.

Limited Slip Differential (LSD).[‡]

Helps to maintain traction on slippery surfaces or where the rear wheels are on different types of road surface.

#Standard on all models. Optional on Falcon Ute base model with automatic transmission.



Supercab design.

Provides a generous space behind the seats that also gives you a lockable storage area.

Airbags.

An extensive series of airbags are standard across the range including driver and front passenger airbags and side head/thorax airbags.

Antilock Braking system (ABS).

The latest Anti-lock Braking System with Electronic Brakeforce Distribution (EBD) is standard across the range.

Australia's highest safety rating.

In addition to a long list of standard features, you have added peace of mind knowing that the entire Falcon range has a 5-star ANCAP safety rating.

The Falcon Ute range

Work hard or play hard, with a Falcon Ute range that's bursting with power, performance and style. 19



Falcon Ute Cab Chassis shown in Lightning Strike with optional aluminium tray. Falcon XR6 Turbo Ute shown in Emperor with optional Luxury Pack (includes 19" alloy wheels).

From the base model Cab Chassis to the top of the range XR6 Turbo, there's a Falcon Ute for you. Tough and powerful, yet offering the driveability and comfort you'd expect from a car. The Falcon Ute is made for the hard work, but is just as ready to play hard.



Falcon Ute Cab Chassis shown in Lightning Strike with optional aluminium tray.



Falcon XR6 Cab Chassis shown in Lightning Strike with optional aluminium tray.

Cab Chassis

Get back to basics with a cab chassis that means serious business. | 21

Versatile and flexible, the Falcon Ute Cab Chassis offers you the choice of a factory fitted aluminium tray or to have one tailored to fit your specific work needs. Either way, the Falcon Ute Cab Chassis is always ready to work. And with an interior loaded with the latest safety, comfort and driving technologies, you've got a vehicle that's comfortable in any surroundings.

FALCON UTE

6-speed automatic transmission

One-tonne suspension (1)

SYNC® 2, Single zone climate control, WiFi feature, SD card slot, Digital DAB+/AM/FM Radio, 8" colour touch screen

USB and iPod® integration (2)

Bluetooth®~ mobile phone integration

Sat Nav with Traffic Message Channel (TMC)°

Cruise control with steering wheel mounted controls (3)

Driver, passenger and side head/thorax airbags (4)

Dynamic Stability Control (DSC) incorporating Traction Control and Emergency Braking Assist (EBA)

Anti-lock Braking System (ABS) with Electronic Brakeforce Distribution (EBD)

Optional Limited Slip Differential (LSD)

Optional aluminium tray

XR6

Includes most base model features, plus:

Standard sports suspension

Daytime running lights

Rain sensing wipers

Front scuff plates

18" alloy wheels

Sports leather wrapped steering wheel

Cloth trim sports seats

Standard Limited Slip Differential (LSD)

Projector headlamps

Fog lamps





Falcon Ute Styleside Box shown in Silhouette.



Falcon XR6 Styleside Box shown in Silhouette.



Falcon XR6 Turbo Ute shown in Silhouette.

The Falcon Ute Styleside Box is just as at home on the town as it is on the worksite. With a tough, fully integrated bedliner, it protects your work equipment from daily wear and tear. With sporty, sleek lines and commanding road presence, there's simply no mistaking the Falcon XR Ute.

FALCON UTE

6-speed automatic transmission†

USB and iPod® integration

One-tonne suspension

Bluetooth®- mobile phone integration

SatNav with Traffic Message Channel (TMC)‡ (3)

Cruise control with steering wheel mounted controls
Driver, front passenger and side head/thorax airbags

Dynamic Stability Control (DSC) incorporating
Traction Control and Emergency Braking Assist (EBA)

Anti-lock Braking System (ABS) with
Electronic Brakeforce Distribution (EBD)

Optional Limited Slip Differential (LSD)*

XR6

Includes most base model features, plus:

Flush fit soft tonneau cover (1)

Standard sports suspension

Daytime running lights

Rain sensing wipers

Front scuff plates

18" alloy wheels

Sports leather wrapped steering wheel

Cloth trim sports seats (2)

Alloy sports bar

Standard Limited Slip Differential (LSD)

Projector headlamps

Fog lamps

Optional XR Luxury Pack:

19" alloy wheels, Leather accented sports seats,
Premium audio system, Dual-zone climate control

XR6 TURBO

Includes most XR6 features, plus:

4.0L I6 Turbo engine

Optional XR6 Turbo Luxury Pack:

Leather accented sport seats

Premium audio system

Dual zone climate control

Styleside box

The Styleside Box is eager to work and just as eager to play. | 23



Colours and trim

With a great range of stylish colours and trims, you can customise the new Falcon Ute and make it yours.



Silhouette[^]



Lightning Strike[^]



Aero Blue[^]



Emperor^{^^}



Kinetic^{^^}



Winter White



Victory Gold^{^^}



Smoke^{^^}



Falcon Ute

Seat insert: Metro in Shadow
Seat bolster: Jacob in Shadow



XR6 Turbo 19" x 8.0" alloy

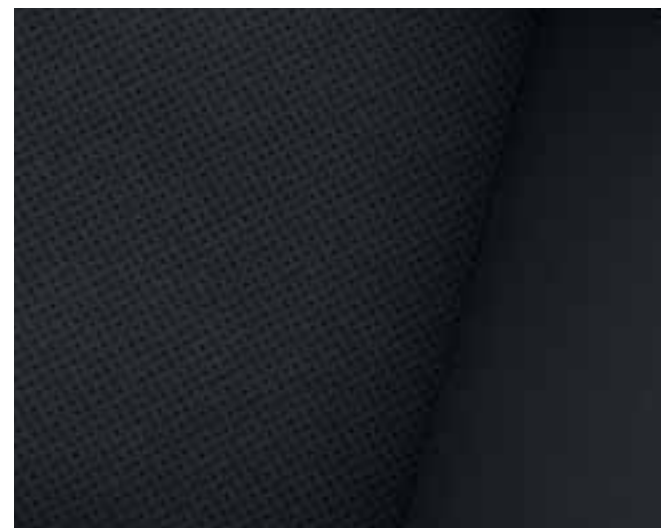


XR6 and XR6 Turbo (standard)

Seat insert: Radium in Ebony
Seat bolster: Relay in Ebony



XR6 (standard) 18" x 8.0" alloy



XR6 and XR6 Turbo (optional)

Seat insert: Natural Perforated Leather in Shadow
Seat bolster: Nudo Print Leather in Shadow



XR6 Cab Chassis 16" x 7.0" alloy



Falcon Ute 16" x 6.5" steel

[^]Not available on Falcon Ute Models. ^{^^}Prestige paint is an option that incurs an additional charge.

Details make the difference

Get exactly what you want from your Falcon Ute, by picking the perfect features and accessories to tailor it to your needs and requirements.



Carpet mats.‡ Protect your passenger seating wells from dirt, mud and outdoor muck with a set of three smartly designed mats.



FPV wheel. These distinctive FPV alloy wheels are purpose-designed to complement the Ford Falcon's dynamic lines.



Soft tonneau cover. Helps protect equipment and valuables from rain and dust. Features elasticised bungee looping.



Bonnet Protector. Protect your bonnet from stones and other objects with this UV resistant acrylic bonnet protector.



EGR hard tonneau cover. Lightweight and impact resistant, this cover helps keep your equipment secure and protected from rain and dust.



Towpack. Choose the standard towpack for a carrying capacity of up to 1,600kg, or the heavy duty towpack (including load levelling kit) for towing up to 2,300kg.*

Accessories

	Falcon Ute C/C	Falcon Ute SSB	XR6 C/C	XR6 SSB	XR6 Turbo SSB
Exterior styling					
Alloy wheel 16" x 7" 5-spoke ¹	A	A	-	-	-
FPV 19" GS Type – 5 spoke Silver, Dark Argent ^{1,2}	-	-	A	A	A
FPV 19" GT type split 5 spoke – Silver Machined Face, Black Machined face ^{1,2}	-	-	A	A	A
FPV 19" F6 Type – Dark Argent ^{1,2}	-	-	A	A	A
Alloy wheel lock nut set	A	A	A	A	A
EGR 3 piece hard tonneau cover ³	-	-	-	A	A
EGR 1 piece hard tonneau cover ³	-	A	-	-	-
Alloy sports bar	-	A	-	S	S
Exterior protection					
Soft tonneau cover	A	A	A	A	A
Bonnet protector	A	A	A	A	A
Weathershields	A	A	A	A	A
Mudspats	A	A	A	A	A

	Falcon Ute C/C	Falcon Ute SSB	XR6 C/C	XR6 SSB	XR6 Turbo SSB
Towing and carrying					
Towpack – 1600 kg load rating (auto) 1200 kg load rating (manual) ⁴	O/A	O/A	O/A	O/A	O/A
Heavy duty towpack – 2300 kg load rating incl. load levelling kit ^{4,5}	A	A	A	A	A
Rhino Rack Vortex carry bar ³	A	A	A	A	A
Interior styling, comforts and storage					
Scuff plates (set of 2)	A	A	A	A	A
Carpet mat – Passenger	A	A	A	A	A
Cargo swing net	A	A	A	A	A
Cabin tidy	A	A	A	A	A
Pollen filter	A	A	A	A	A
Aluminium scuff plates (set of 2)	A	-	-	-	-
Smoker's pack	A	A	A	A	A
In car electrical					
Lights on feature	A	A	A	A	A

S = Standard. O = Optional. A = Accessory that can be added at any time. - = Not available.

‡Set of three. *This accessory is a Supplier Branded Accessory and is not manufactured or warranted by Ford. The warranty is provided by the manufacturer of the accessory. Contact your Authorised Ford Dealer for details of the accessory manufacturer's warranty applicable to this accessory. *Subject to State and Territory regulations.

1. Wheels and tyres sold separately when fitted in Dealership. 2. Not available on optional EcoLPI. 3. It is recommended that tyres matching original equipment specification be fitted to Mullins alloy wheels. 4. This accessory is a Supplier Branded Accessory and is not manufactured or warranted by Ford. The warranty is provided by the manufacturer of the accessory. Contact your authorised Ford Dealer for details of the accessory manufacturer's warranty applicable to this accessory. 5. Subject to State and Territory regulations. 5. Available on automatic transmission models only.

Mechanical Specifications

Engine type	4.0L DOHC DI-VCT I6		EcoLPi DOHC DI-VCT I6	4.0L DOHC DI-VCT TURBO I6	
Applicable models	Falcon Ute, XR6		Falcon Ute, XR6	XR6 Turbo	
Engine size (cc)	3984		3984	3984	
Compression ratio	10.3:1		12:1	8.8:1	
Maximum power (DIN)	195kW @ 6000rpm		198kW @ 5000rpm	270kW @ 5250rpm ¹	
Maximum torque (DIN)	391Nm @ 3250rpm		409Nm @ 3250rpm	533Nm @ 2000rpm – 4750rpm ¹	
No. of valves			24		
Bore x stroke			92.25 x 99.31mm		
Fuel management system	Sequential multipoint electronic fuel injection		Liquid phase injection	Sequential multipoint electronic fuel injection	
Engine management	Powertrain control module incorporating electronic throttle control				
Transmission Ratios	6-speed manual	6-speed auto	6-speed auto	6-speed manual	6-speed auto
1st	3.36	4.17	4.17	2.98	4.17
2nd	2.07	2.34	2.34	1.78	2.34
3rd	1.35	1.52	1.52	1.30	1.52
4th	1.00	1.14	1.14	1.00	1.14
5th	0.71	0.87	0.87	0.71	0.87
6th	0.57	0.69	0.69	0.55	0.69
Reverse	3.28	3.40	3.40	2.90	3.40
Drive ratio	3.45:1	2.73:1	2.73:1	3.73:1	2.73:1
Fuel	81		86	81	
Fuel tank capacity (L)	81		86	81	
Recommended fuel	ULP or PULP E10 compatible		LPG only	ULP or PULP E10 compatible	
Electrical/Clutch			54Ah		
Battery			54Ah		
Clutch type (manual only)	Self-adjusting diaphragm		–	Self-adjusting diaphragm	
Diameter (manual only)	254mm		–	290mm	
Maximum Braked Towing Capacity ²	1200Kg ^{3,4}		–	1200Kg ^{3,4}	
Manual	1200Kg ^{3,4}		–	1200Kg ^{3,4}	
Automatic			2300Kg ^{4,5}		
Brakes	Standard vented disc brakes with twin piston caliper (performance brakes on XR6 Turbo)				
Front brakes	Standard vented disc brakes with twin piston caliper (performance brakes on XR6 Turbo)				
Rear brakes	Standard solid disc brake with single piston caliper				
Anti-lock Braking System (ABS)	ABS with Electronic Brakeforce Distribution (EBD)				
Dynamic Stability Control (DSC)	Dynamic Stability Control (DSC) incorporates Emergency Brake Assist (EBA) and ABS with Electronic Brakeforce Distribution (EBD)				

Specifications and Options

Exterior Dimensions (mm)	Falcon Ute C/C ⁶	Falcon Ute SSB	XR6 C/C ⁷	XR6 SSB	XR6 Turbo SSB
Overall length	5358	5056	5358	5056	5056
Overall width ²	1897	1934	1897	1934	1934
Wheelbase	3103	3103	3103	3103	3103
Front track	1583	1583	1583	1583	1583
Rear track	1583	1583	1583	1583	1583
Front overhang	943	943	943	943	943
Rear overhang	1312	1018	1312	1018	1018
Interior Dimensions (mm)					
Front headroom	1026	1026	1026	1026	1026
Front legroom	1073	1073	1073	1073	1073
Front shoulder room	1523	1523	1523	1523	1523
Front hiproom	1486	1486	1486	1486	1486
Luggage volume behind seats (L)	235	235	235	235	235
Cargo Dimensions (mm)					
Suspension type	1-tonne	1-tonne	1-tonne	Sports	Sports
Floor level load length	2209	1843	2209	1843	1843
Belt level load length	2209	1843	2209	1843	1843
Wheelhouse cargo width	1804	1224	1804	1173	1173
Tailgate opening width	1804	1356	1804	1356	1356
Liftover height	969	789	969	688	688
Cargo depth	240	442	240	442	442

1. Power and torque figures measured using premium unleaded fuel (95 RON). 2. Figures quoted are for braked trailers. Subject to State and Territory regulations. 3. When fitted with Genuine Ford towbar. Subject to state and territory regulations. 4. Towball download and rear axle limits must not be exceeded. Please refer to your Ford Dealer for advice. 5. When fitted with a Genuine Ford heavy duty towpack and load levelling kit. Subject to state and territory regulations. 6. Cab Chassis dimensions quoted with optional factory fitted tray. 7. Excludes exterior side mirrors. 8. Kerb mass and payload maximum values are approximate only. Kerb mass quoted includes full tank of fuel, without occupants or luggage/cargo and with all standard equipment (plus automatic climate control where not standard). 9. Payload (maximum) = GVM (Gross Vehicle Mass) minus the kerb mass. 10. Payload is defined as the combined value inclusive of occupants, cargo, added options, additional structures and towball download when towing. 11. For petrol engine with optional automatic transmission, add 5kg to kerb mass. For optional EcoLPi engine, add 72kg to kerb mass. 12. When optional 19" wheels and tyres specified, reduce GVM, payload and rear axle load maximum by 70kg. 13. When optional factory aluminium tray specified, add 120kg to kerb mass. 14. Front

Specifications and Options (continued)

Vehicle Masses ⁸⁻¹⁵ . (kg)	Falcon Ute C/C ⁶	Falcon Ute SSB	XR6 C/C ⁶	XR6 SSB	XR6 Turbo SSB
Suspension type	1-tonne	1-tonne	1-tonne	Sports	Sports
GVM	2820	2820	2820	2325	2285
Kerb mass (petrol engine and manual transmission)	1723	1770	1730	1783	1832
Kerb mass (EcoLPI engine)	1782	1829	1792	1841	–
Payload (maximum) (manual)	–	–	–	550	470
Payload (maximum) (auto)	1097	1050	1090	542	453
Front axle load (maximum)	1165	1165	1165	1165	1165
Rear axle load (maximum)	1700	1700	1700	1240	1170
Tailgate load rating (maximum)	–	500	–	500	500
GCM					
- 1200kg towing	–	–	–	3405	–
- 1600kg towing	4260	4260	4260	3765	3795
- 2300kg towing	4890	4890	4890	4395	4425
Minimum turning circle (m)					
Diameter (kerb-to-kerb)	11.8	11.8	11.8	11.8	11.8
Engine and Transmission					
4.0L DOHC DI-VCT I6					
6-speed manual transmission	–	–	–	S	–
6-speed automatic transmission with sequential sports shift	S	S	S	O	O
4.0L DOHC DI-VCT TURBO I6					
6-speed manual transmission	–	–	–	–	S
EcoLPI 4.0L DOHC DI-VCT I6 (Dedicated LPG)					
6-speed automatic transmission with sequential sports shift	S	S	S	S	–
Ride and Handling					
Virtual Pivot Control Link front suspension	S	S	S	S	S
Leafspring rear suspension	S	S	S	S	S
1-tonne suspension	S	S	S	–	–
Sports suspension ¹⁶	–	–	–	S	S
Limited Slip Differential (LSD)	O	O	S	S	S
215/60 R16 (1-tonne) tyres	S	S	S	–	–
16" x 6.5" silver steel wheel (rated 1-tonne) ¹⁷	S	S	–	–	–
16" x 7" XR6 C/C alloy wheel (rated 1-tonne) ¹⁷	–	–	S	–	–
18" x 8" XR6 alloy wheels – 245/40 R18 tyres ¹⁷	–	–	–	S	–
19" x 8" XR6 Turbo alloy wheels – 245/35 R19 tyres ¹⁷	–	–	–	P	S
Steel spare wheel ¹⁸	S	S	S	S	S
Exterior					
Prestige paint	O	O	O	O	O
Projector headlamps	S	S	S	S	S
Alloy sports bar	–	–	–	S	S
Fog lamps	–	–	S	S	S
Body colour mirrors	–	–	S	S	S
Wiring facility for cargo lamp	S	S	S	S	S
Cargo bedliner	–	S	–	S	S
Flush fit soft tonneau cover	–	A	–	S	S
Aluminium tray	O	–	O	–	–
Adjustable tie-down hooks	–	S	–	S	S
Instrumentation and Controls					
Human Machine Interface (HMI) with Premium Interior Command Centre (ICC) with 8" colour touch screen	S	S	S	S	S
Multi-function display including distance to empty, average speed, outside air temperature, average fuel consumption, speed warning	S	S	S	S	S
Cruise control with steering wheel mounted controls	S	S	S	S	S
Steering wheel mounted audio controls	S	S	S	S	S
Sports leather wrapped steering wheel	–	–	S	S	S

S = Standard. O = Optional. P = Part of optional pack. – = Not available. A = Accessory available at any time.

and rear axle load limits must not be individually exceeded. The combined weight of the fully loaded vehicle and trailer must not exceed the GCM. GVM must not be exceeded. ¹⁵. Refer to Owner's Manual for full vehicle mass details. ¹⁶. Optional EcoLPI engine increase front ride by 25mm when sports suspension is specified. ¹⁷. Set of four. ¹⁸. Vehicles Fitted with 16"/17" wheels come with a 16" steel spare wheel. Vehicles Fitted with 18"/19" wheels come with a 17" steel spare wheel. Vehicles with 1-tonne suspension come with a 1-tonne rated steel spare wheel. If spare wheel, rim or tyre size differs from the other wheels fitted, the vehicle should be driven with caution and the standard wheel and tyre fitted as soon as possible.

Specifications and Options (continued)

	Falcon Ute C/C ⁶	Falcon Ute SSB	XR6 C/C ⁶	XR6 SSB	XR6 Turbo SSB
Comfort and Convenience					
Single-zone automatic climate control	S	S	S	S	S
Dual-zone automatic climate control	–	–	–	P	P
Power windows	S	S	S	S	S
Automatic headlamps ON/OFF feature	S	S	S	S	S
Power adjustable side mirrors	S	S	S	S	S
Front Scuff plates	–	–	S	S	S
Alloy pedal covers	–	–	S	S	S
Rain sensing wipers	–	–	S	S	S
Carpet floor covering	S	S	S	S	S
Driver/passenger reading lamps	S	S	S	S	S
Centre console bin with lid	S	S	S	S	S
Lockable glove box	S	S	S	S	S
Seating					
Cloth trim seats	S	S	–	–	–
Cloth trim sports seats	–	–	S	S	S
Leather accented sport seats	–	–	O	O/P	O/P
4-way power driver's seat	S	S	S	S	S
Adjustable driver's seat lumbar support	S	S	S	S	S
Adjustable passenger's seat lumbar support	S	S	S	S	S
Quick-tilt forward seats	S	S	S	S	S
Audio & Communication					
Standard audio system with monochrome display, DAB+/AM/FM Radio, single slot CD and 2 speakers	S	S	–	–	–
Prestige audio system with 8" colour touch screen, DAB+/AM/FM Radio, single slot CD and 6 speakers	–	–	S	S	S
Premium audio system with DAB+/AM/FM Radio, single slot CD and 8 speakers	–	–	–	P	P
MP3 CD capability	S	S	S	S	S
3.5mm auxiliary audio input	S	S	S	S	S
Bluetooth® mobile phone integration ¹⁹	S	S	S	S	S
Ford SYNC® 2 connectivity with voice control ²⁰	S	S	S	S	S
WiFi feature, iPod integration, ²¹ USB integration (2 ports)	S	S	S	S	S
Satellite Navigation with traffic message channel ²²	S	S	S	S	S
8" colour touch screen	S	S	S	S	S
Safety and Security					
Driver and passenger airbags, Side head/thorax airbags	S	S	S	S	S
Emergency Assistance	S	S	S	S	S
Dynamic Stability Control incorporating: Traction Control, Emergency Brake Assist (EBA), Anti-lock Braking System (ABS) and Electronic Brakeforce Distribution (EBD)	S	S	S	S	S
Driver fatigue warning	S	S	S	S	S
Central locking	S	S	S	S	S
Engine Immobiliser	S	S	S	S	S
Belt Minder System	S	S	S	S	S
Towing					
Towbar – 1600kg rated ²³	O ²³	O ²³	O ²³	O ²³	O ²³
Optional Packs					
XR Luxury Pack					
19" x 8" XR6 Turbo alloy wheels – 245/35 R19 tyres ¹⁷	–	–	–	P	S
Leather accented sport seats	–	–	–	P	P
Premium audio system with DAB+/AM/FM Radio, single slot CD and 8 speakers	–	–	–	P	P
Dual-zone automatic climate control	–	–	–	P	P

S = Standard. O = Optional. P = Part of optional pack. – = Not available. A = Accessory available at any time.

19. Bluetooth® is a registered trademark of Bluetooth SIG Inc., and is used under licence. Customers should consult their Ford Dealer on the ability of their mobile phone handset to integrate with the Bluetooth® system prior to making a purchase decision. 20. Not all SYNC® features are compatible with all phones. 21. iPod is a trademark of Apple Inc. Please refer to ford.com.au for iPod compatibility. 22. Traffic information is provided through an arrangement with Intellematics Australia Pty Ltd. Traffic information is based on data provided with the permission of one or more third parties. Should Ford's arrangement with Intellematics Australia Pty Ltd cease for any reason, the ongoing provision of traffic information cannot be guaranteed. 23. Towball sold separately when factory fitted.

Styleside Box



1934mm (overall width*)



1843mm (load length)

442mm (cargo depth)
728mm (lift over height)

943mm (front overhang) 3103mm (wheel base) 1018mm (rear overhang)



1934mm (overall width*)

442mm (cargo depth)
728mm (lift over height)



1356mm (tailgate opening width)

1224 mm (Falcon Ute models)
1173mm (All XR models) (wheelhouse cargo width)

1843mm (load length)

5156mm (overall length)

Cab Chassis



1897mm (overall width*)



2209mm (load length)

240mm (cargo depth)
969mm (lift over height)

943mm (front overhang) 3103mm (wheel base) 1312mm (rear overhang)



1897mm (overall width*)

240mm (cargo depth)
969mm (lift over height)



1804mm (tailgate opening width)

1804mm (cargo width)

2209mm (load length)

5358mm (overall length)

*Excludes sidemirrors.



Quality

We design and build your Ford to feel as good after many years of service as it did the day you picked it up. And to drive just as beautifully, too.



Safety

Ford's Intelligent Protection System uses sophisticated technology designed to help prevent an accident and, if one should happen, to help protect you.



Sustainability

Using advanced technology, we're committed to creating vehicles with improved fuel economy, reduced CO₂ emissions and a lower overall cost of ownership.



Smart

Vehicles with smart, intuitive technologies designed to connect you to your world and many clever solutions that make life a little easier.

Speak to your Ford Dealer today about how we can help you make the most out of your vehicle ownership experience.

Complimentary State Auto Club Roadside Assistance and Membership.

Our commitment to your complete satisfaction plays a major role in everything we do. That is why we provide a 12 month Roadside Assistance package including State Auto Club Membership for all Retail and Blue Fleet Customers (with fleets less than 5 vehicles).

This package gives you access to the largest network of roadside assistance providers in the country, so you can be assured that you have non-stop coverage every day of the year.

The benefits of being a member are not limited to the peace of mind of 24/7 roadside assistance. You also have access to a wide range of member benefits including Show Your Card & Save. In addition, you will maintain any benefits accrued through your existing years of membership (where applicable).

Complimentary State Auto Club Roadside Assistance & Membership is valid for eligible Ford vehicles and is available from participating Authorised Ford Dealers only. Visit your local Ford Dealer or refer to ford.com.au for more information and full terms and conditions.



Warranties & Service.

3 year/100,000km new car warranty.#

For three years or 100,000km, whichever comes first, your Ford is covered against any defects in factory materials or workmanship. This also applies to Genuine Ford Accessories you may have had fitted before you took delivery.

5 year warranty against perforation corrosion.#

It's reassuring to know that the original body of your gleaming new Ford is guaranteed against perforation corrosion for the first five years of its life. If perforation corrosion occurs, we'll fix it for free.

myFord Warranties and Insurance.

When you first turn the key of your brand new Ford you want to do so without a care in the world. Our range of myFord products gives you that extra peace of mind. For more information about myFord Warranties and Insurance, visit your participating Ford Dealer for further details on the plans that best suit your needs. Terms, conditions and eligibility criteria apply.

12 months/15,000km service intervals.

Under normal driving conditions service intervals are 12 months or 15,000km, whichever occurs first.

FORD SERVICE

At Ford, we are committed to providing an outstanding ownership experience. For example, we think you should always know what you're going to pay for a standard service, before you go in. So we offer a Service Price Promise for the life of your car, which means we'll publish the maximum price you'll pay for your next A or B logbook service at participating Authorised Ford Dealers on all vehicles built from 2007.

However our service doesn't end at the service garage. With each standard service at a participating Auto Club Dealer, Retail and Small Business

Customers (fleets of less than five vehicles) will also receive up to 12 months Auto Club Membership (including free Roadside Assistance), for up to seven years. Eligible customers will even have access to a free loan car with any scheduled service, through participating dealers. Why do we do all this? Because at Ford, we think that's what service should be.

For more details visit your participating local Ford Dealer or visit ford.com.au/service/t-and-c for full terms and conditions.

Want to contact us?

For answers to your questions, or help with any concern, contact our Customer Relationship Centre on 13 FORD (13 3673) or email customers@fordcrc.com.au

Visit us on the web.

If you want more information on Ford or our entire product range, visit us at ford.com.au

Running a fleet?

Our Ford Fleet team is available to assist fleet customers with information on Ford products and services. Call 1300 13 13 30 or email askfleet@ford.com

#Conditions and exclusions apply. For more information consult your authorised Ford Dealer.

This brochure details specifications and features of the Falcon Ute. Some driver assistance features and safety features described in this brochure are designed to function using sensors, whose performance may be affected under certain weather or environmental conditions. Not all features will be available on the entire Falcon Ute model range. Please visit our website www.ford.com.au for more information.

This brochure is designed to provide you with a general introduction to the Ford Products (including available optional equipment) referred to, and should be read in conjunction with the latest specification sheet. Image and Illustrations are for information purposes and are indicative only. Because of changes in conditions and circumstances Ford* reserves the right, subject to all applicable laws, at any time, at its discretion, and without notice, to discontinue or change the features, designs, materials, colours and other specifications and the prices of its products, and to either permanently or temporarily withdraw any such products from the market without incurring any liability to any prospective purchaser or purchasers. The latest specification sheet should be referred to for information on the availability, ordering and use of features and optional equipment. Always consult an authorised Ford Dealer for the latest information with respect to features, specifications, prices, optional equipment and availability before deciding to place an order.

*FORD MOTOR COMPANY OF AUSTRALIA LIMITED. (A.B.N. 30 004 116 223) Registered Office: Level 1, 600 Victoria St, Richmond, Victoria 3121, Australia. Falcon Ute Brochure. Printed August 2016. BHFO00191 FRD0002085



Go Further

Click to Request



Quote



Hot Deals



Test Drive