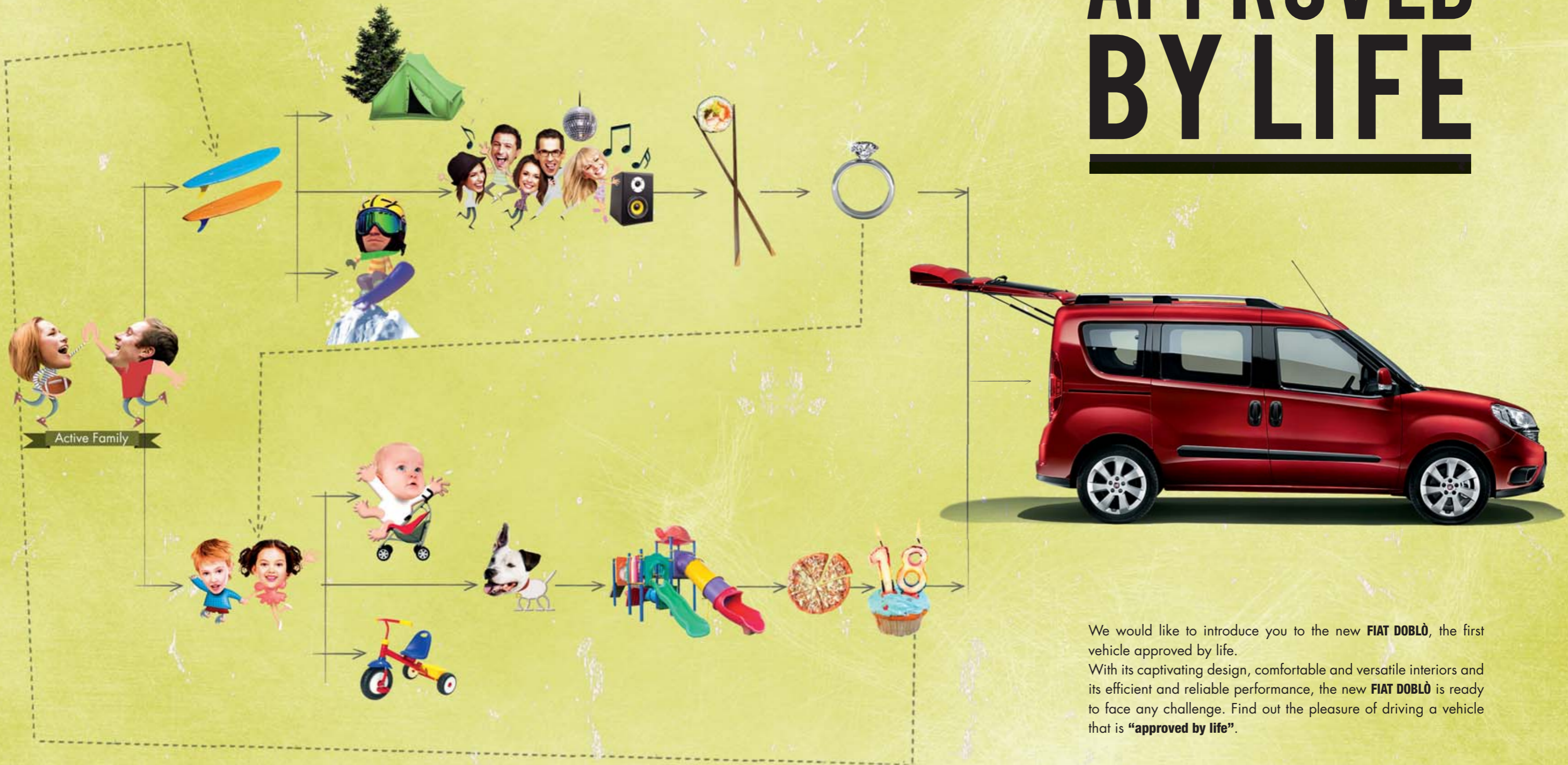




DOBLO

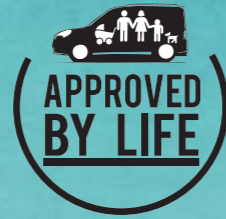


APPROVED BY LIFE



We would like to introduce you to the new **FIAT DOBLÒ**, the first vehicle approved by life.

With its captivating design, comfortable and versatile interiors and its efficient and reliable performance, the new **FIAT DOBLÒ** is ready to face any challenge. Find out the pleasure of driving a vehicle that is "approved by life".



Designed for friendly users.



The style of the new **FIAT DOBLÒ** says a lot about the personality of those who choose it: relaxed, open and mindful of the small things that make every day unique. Its typical front lines combine **original design and practicality**. Its boldest features, such as the side wheel arches, convey a sense of strength and solidity, while the large glazed surface exudes a sense of freedom and openness on-board, making every journey a delight.



With the new details lending it an unmistakably recognisable style, the new **FIAT DOBLÒ** is the perfect combination of strength and harmony. The robust front bumper is balanced out by the light cluster, giving you the best of both worlds. **Travelling with your beloved ones has never been more versatile.**



Designed for functionality.



Work, family, passions, life is the perfect equilibrium between emotions and rationality. Make sure you have the right tools to enjoy it fully: the new **FIAT DOBLÒ** is born to make room for everything you love, thanks to its 5 or 7 seats. All designed to provide the utmost comfort in a pleasant environment which leaves room for feelings, but with versatility as its strength. Its size and modularity of the interiors, along with the new high roof version, provide you with **really infinite usage possibilities**.



Active Day





The 5 seats of the new **FIAT DOBLÒ** can adapt to even the most demanding situations: **a multitude of different combinations to try out**, folding down and “packing” the seats depending on the load and number of passengers. What’s more, the basic configuration can be enhanced with a further two seats, for a total of 7 seats to accommodate two more travelling companions.

The luggage capacity varies from 790 to 3,200 litres (with the second row seats folded down). The 5-seater version can be equipped with a rear shelf which can be positioned at two different heights and is sturdy enough to support up to 70 kg and create a fully flat and versatile load platform.





Infotainment



In the new **FIAT DOBLÒ** you can simply never have too much company! In addition to letting you invite the whole family along for a ride, it also keeps you in touch with all your friends thanks to its advanced Blue&Me™ technology*. Blue&Me™ integrates Bluetooth® and USB connectivity, so there is no need to take your eyes off the road: you can listen to music and make calls on your mobile phone, simply by using voice commands or controls on the steering wheel**.

The new Fiat Doblo also stands out because of its versatility: it can be fitted with a Dash Dock so you can place your TomTom navigator screen as part of your dashboard.

* Standard on Lounge and Trekking versions.

** The controls mounted on the steering wheel are standard on Easy, Easy Air, Lounge and Trekking versions.



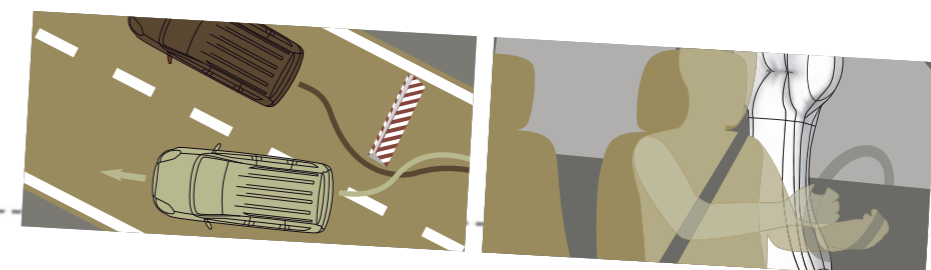
Safety



What is more important than living freely and intensely? Doing so in complete safety!

Every new **FIAT DOBLÒ** is equipped with ESC (Electronic Stability Control), ASR (Anti Slip Regulation), ABS with EBD (Electronic Brake-force Distribution) and TPMS (Tyre Pressure Monitoring System), among others.

Providing further safety and peace of mind, the new **FIAT DOBLÒ** is fitted with a body with crumple zones and front side airbags which, teamed with the front airbags, provide protection for both head and chest.



Engines

The engine range of the new **FIAT DOBLÒ** has been tested and approved by the road, and has passed with full marks, thanks to its top performing power units, while being eco-friendly and cost-effective at the same time. Furthermore, the Dualogic™ robotised gearbox with 5 gears and the sequential and automatic modes, with ECO function, equally contributes to the reduction of fuel consumption and emissions.

1.4 95 HP petrol

Displacement (cm³) 1,368
Euro 6
Max. speed 100 mph
Consumption mpg (l/100 km):
urban 30.4 (9.3) /
extra-urban 47.9 (5.9) /
combined 39.2 (7.2)
CO₂ (g/km) 165

1.6 95 HP MultiJet II

Displacement (cm³) 1,598
Euro 6
Top speed 99/ 97* mph
Consumption mpg (l/100 km):
urban 43.5 (6.5) / 41.5 (6.8)*
extra-urban 64.2 (4.4) / 60.1 (4.7)*
combined 54.3 (5.2) / 51.4 (5.5)*
CO₂ (g/km) 137 / 144*

* Values for the Trekking version

1.6 120 HP MultiJet II

Displacement (cm³) 1,598
Euro 6
Top speed 107/104* mph
Consumption mpg (l/100km):
urban 43.5 (6.5) / 41.5 (6.8)*
extra-urban 64.2 (4.4) / 60.1 (4.7)*
combined 54.3 (5.2) / 51.4 (5.5)*
CO₂ (g/km) 137 / 144*

* Values for the Trekking version

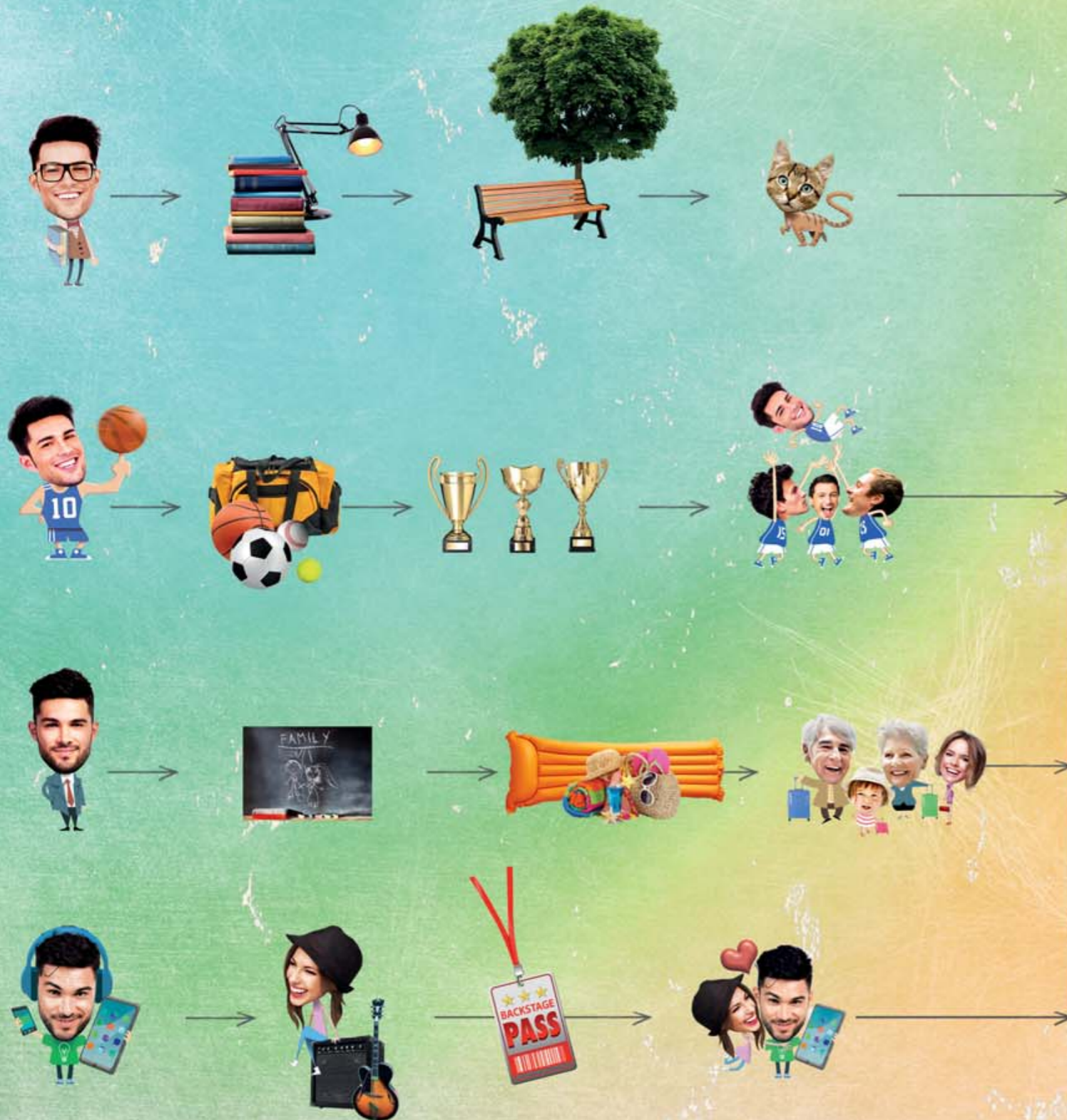


Dualogic™ gearbox





Designed for personality.



Friend, colleague, companion: there are always many lives inside a single life. The secret of the new **FIAT DOBLÒ** is the ability to make all of them happy. Thanks to its wide range and the Mopar® customisations, the new Fiat Doblò satisfies even the most demanding personalities, that want their vehicle to be unique.

High roof

Choose between the Pop, Easy, Easy Air, Lounge or Trekking trim levels to express your style at best and add the optional high roof† to get 27cm of additional height, so you don't need to leave anything behind. You can also complement your **FIAT DOBLÒ** with different packs of equipment, adding valuable comfort and functionality. With its wide trim and variety of options the new **FIAT DOBLÒ** has all the right answers for every life.

†The high roof option is available on Easy, Easy Air and Lounge versions only.



Range and Standard Equipment

Pop

- Start&Stop ^(*)
- Remote central locking
- Electric front windows
- 16" steel wheels
- Exterior temperature sensor
- 2 sliding side doors
- Split folding (60/40) rear seat
- Rear head restraints
- ESP with ASR/MSR, Hill Holder, ABS+EBD
- Driver and passenger airbags
- ISOFIX child seat attachment
- TPMS - Tyre pressure sensor
- Fix&Go tyre kit
- Radio/CD player
- Height and reach adjustable steering wheel
- Locking glove compartment

Easy

In addition to the features of the POP

- Front armrest
- Extendable luggage compartment cover
- Fog lights
- Body coloured electrically adjustable heated door mirrors
- Rear power socket
- Height adjustable driver's seat with lumbar support
- Audio controls mounted on steering wheel
- Body coloured bumpers
- Radio/CD/MP3 player

Lounge

In addition to the features of the EASY AIR

- Rear parking sensors
- Electric rear windows
- Cruise control ^(**)
- Dark tinted windows
- Full size side airbags
- Leather steering wheel and gear knob ^(***)
- Child mirror
- Height adjustable parcel shelf
- Body coloured electrically foldable door mirrors
- Radio/CD/MP3 player with Blue&Me™, USB and AUX
- 16" alloy wheels

Easy AIR

In addition to the features of the EASY

- Air conditioning

Trekking

In addition to the features of the LOUNGE

- Traction+ system
- M+S all season tyres
- Trekking look (badge, skid plates)
- Roof bars
- 16" alloy wheels with special Trekking design



- 27 cm of additional height
- Twin glazed rear doors
- Reinforced suspension
- Oversized brakes

Packs

Blue&Sound Pack

- Leather steering wheel and gear knob
- Blue&Me™ - hands free system with USB and AUX

Eco Pack

- Reduces CO₂ emissions from 137/144* g/km to 124/132* g/km and combined consumption from 54.3/51.4* mpg to 60.1/56.5* mpg

Family Pack

- 7 seats
- Longitudinal roof bars
- Rear window quarter lights

* Values for Trekking version

Please check packs and options availability and incompatibilities on pages 28-29

The taillights have the Fiat logo inside



The third rear windows have a swivel opening



The rear shelf, can be placed on two heights and it is a convenient stand supporting up to 70 kg



Sport attitude



+

+



+



Designed for your passion.



Some of us are all about being at home with the family while others are all about experiencing the great outdoors with the family. The new **FIAT DOBLÒ TREKKING** is dedicated to those who want to experience well-being and fun with their loved ones in the open air, off the beaten track. Because freedom is really only fun when it is shared.

An all-road look, with an extra 10 mm of ground clearance, skid plates on the front bumpers and guard under the engine, are amongst the many features of the new **FIAT DOBLÒ TREKKING**. Exclusive side moulding sporting the Trekking badge, new 16" alloy wheels with special design, longitudinal roof bars, dark tinted windows and exclusive Magnetic Bronze paintwork complete the lineup.

Its independent character also derives from **Traction+**, the device which can be switched on when needed to tackle slippery terrain, such as mud and snow, teamed with M+S all season tyres.



M+S all season tyres

Trekking badge on the side door



Accessories

This is why we add features, to be true to ourselves. This is why **MOPAR**® provides so many customisations, to let you appreciate fully your spare time on-board of the new **FIAT DOBLÒ**, with the following options to choose from: roof bars with ski rack, bicycle rack, canoe rack or surf board rack, rear bicycle rack and partitions for your pets. But practicality does not sacrifice style, with design details such as the 16" alloy wheels, the chromed-plated door mirror covers, the kick plate and the exclusive floor mats. In addition, **MOPAR**® guarantees peace of mind while travelling with the vehicle protection accessories (as the original modular alarms) and the complete range of child seat restraint systems.



Tow bar mounted bicycle carrier,
can be placed on two heights

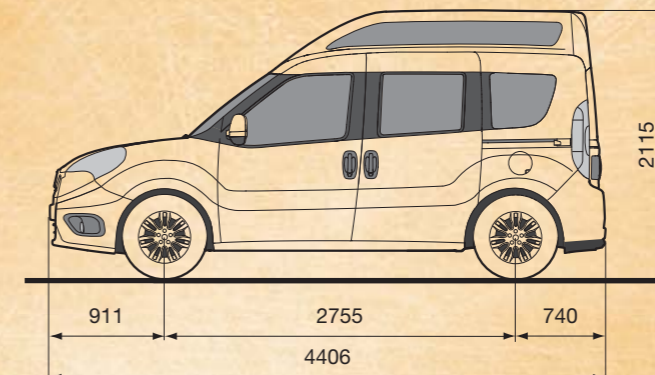
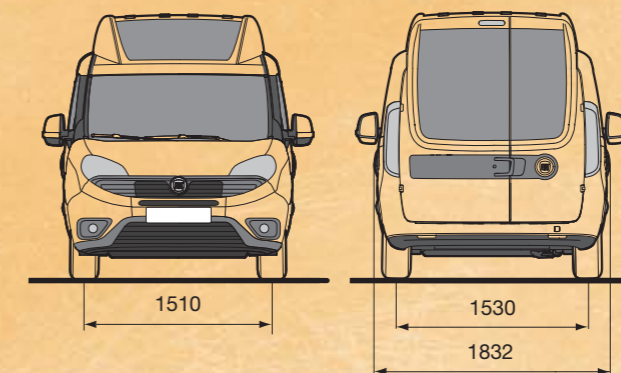
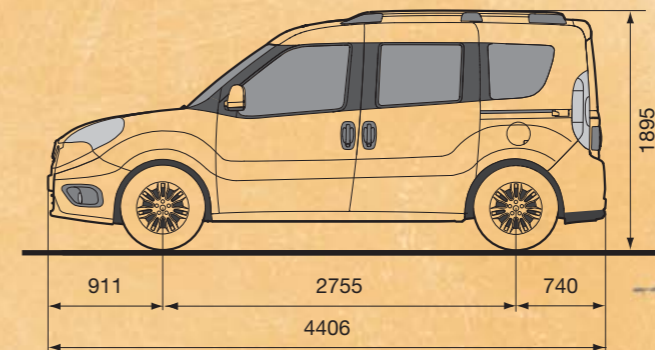
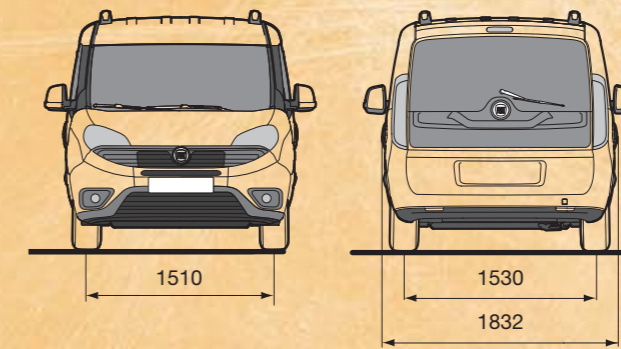


Ski rack



TECHNICAL SPECIFICATIONS

	1.4 95 HP 16v	1.6 95 HP MultiJet	1.6 120 HP MultiJet
	POP - EASY - EASY AIR	EASY - EASY AIR - LOUNGE - TREKKING	EASY - EASY AIR - LOUNGE - TREKKING
Engine			
No. of cylinders, layout	4, in line, transverse front	4, in line, transverse front	4, in line, transverse front
Bore x stroke (mm)	72 x 84	79.5 x 80.5	79.5 x 80.5
Displacement (cm ³)	1368	1598	1598
Emissions level	Euro 6	Euro 6	Euro 6
Compression ratio	11:1	16.5:1	16.5:1
EC max. power: kW (HP) at rpm	70 (95) 6000	70 (95) 2500	88 (120) 3750
EC max. torque: Nm (kgm) at rpm	127 (12.95) 4500	300 (30.6) 1750	320 (32.6) 1750
Supply	timed sequential Multipoint electronic injection, returnless system	electronically controlled Common Rail MultiJet direct injection with turbo and intercooler	electronically controlled Common Rail MultiJet direct injection with turbo and intercooler
Ignition	electronic, static, integrated with the injection	by compression	by compression
Transmission			
Drive	front	front	front
Clutch control	hydraulic	hydraulic	hydraulic
Gearbox/transmission: no. of speeds	5+R	6+R	6+R
Steering			
Type	rack and pinion with hydraulic power steering	rack and pinion with hydraulic power steering	rack and pinion with hydraulic power steering
Kerb-to-kerb turning circle (m)	11.2	11.2	11.2
Brakes - D (disc) - T (drum)			
Front: Ø mm	D 305 (self-ventilating)	D284 / D305 (7-seater) (self-ventilating)	D305 (7-seater) (self-ventilating)
Rear: Ø mm	T 254	T 254	T 254
Brake servo	10"	10"	10"
Suspension			
Front	independent, MacPherson type		
Rear	independent bi-link, with coil springs, telescopic shock absorbers and anti-roll bar		
External dimensions			
Wheelbase (mm)	2755	2755	2755
Length / width (mm)	4406 / 1832	4406 (4410 Trekking) / 1832	4406 (4410 Trekking) / 1832
Height (mm)	1845 / 1895 (with roof bars) / 2115 (high roof)	1845 / 1895 (with roof bars) / 2115 (high roof) / 1905 (Trekking)	1845 / 1895 (with roof bars) / 2115 (high roof) / 1905 (Trekking)
Front / rear track (mm)	1510 / 1530	1510 / 1530	1510 / 1530
Front / rear overhang (mm)	911 / 740	911 / 740	911 / 740
Luggage compartment volume (litres)	790 / 3200 (with rear seats folded down)	790 / 3200 (with rear seats folded down)	790 / 3200 (with rear seats folded down)
Wheels			
Tyres	195/60 R16 C 99T	195/60 R16 C 99T	195/60 R16 C 99T
Electrical equipment (12 V)			
Battery capacity (Ah)	63	72	72
Weights - Capacities			
Kerb weight DIN (kg)	1370 / 1430 (high roof)	1430 / 1500 (high roof)	1430 / 1500 (high roof)
Max. towable weight (non-braked) (kg)	500	500	500
Max. towable weight (braked) (kg)	1000	1300 / 1000 (7 seats)	1300 / 1000 (7 seats)
Fuel tank (litres)	60	60	60
Performance			
Top speed (mph)	100 / 97 (high roof)	99 / 96 (high roof) / 97 (Trekking)	107 / 104 (high roof and Trekking)
Acceleration (s) 0-100 km/h	15.4 / 15.9 (high roof)	13.9 / 14.4 (high roof)	12.1 / 12.6 (high roof)
Consumption*			
Urban / extra-urban / combined cycle mpg (l/100km)	With Start&Stop (standard): 30.4 (9.3) / 47.9 (5.9) / 39.2 (7.2) High roof: 29.7 (9.5) / 46.3 (6.1) / 38.2 (7.4)	With Start&Stop and ECO Pack: 52.3 (5.4) / 65.7 (4.3) / 60.1 (4.7) High roof: 47.1 (6.0) / 57.6 (4.9) / 53.3 (5.3) Trekking: 49.6 (5.7) / 61.4 (4.6) / 56.5 (5.0)	With Start&Stop and ECO Pack: 52.3 (5.4) / 65.7 (4.3) / 60.1 (4.7) High roof: 47.1 (6.0) / 57.6 (4.9) / 53.3 (5.3) Trekking: 49.6 (5.7) / 61.4 (4.6) / 56.5 (5.0)
		Without Start&Stop and ECO Pack (standard): 43.5 (6.5) / 64.2 (4.4) / 54.3 (5.2) High roof: 40.9 (6.9) / 55.4 (5.1) / 48.7 (5.8) Trekking: 41.5 (6.8) / 60.1 (4.7) / 51.4 (5.5)	Without Start&Stop and ECO Pack (standard): 43.5 (6.5) / 64.2 (4.4) / 54.3 (5.2) High roof: 40.9 (6.9) / 55.4 (5.1) / 48.7 (5.8) Trekking: 41.5 (6.8) / 60.1 (4.7) / 51.4 (5.5)
CO ₂ emissions (g/km)	With Start&Stop (standard): 165 / 171 (high roof)	With Start&Stop and ECO Pack: 124 / 140 (high roof) / 132 (Trekking) Without Start&Stop and ECO Pack (standard): 137 / 152 (high roof) / 144 (Trekking)	With Start&Stop and ECO Pack: 124 / 140 (high roof) / 132 (Trekking) Without Start&Stop and ECO Pack (standard): 137 / 152 (high roof) / 144 (Trekking)



* Fuel Consumption and CO₂ emissions figures are based on standard EU tests for comparative purposes and may not reflect real driving results.

STANDARD AND OPTIONAL EQUIPMENT

		POP	EASY	EASY AIR	LOUNGE	TREKKING
Line and style						
Side rubbing strips		■	■	■	■	■
Metallic paint	210	○	○	○	○	○
Body-coloured bumpers	876	-	■	■	■	■
Body-coloured door mirrors	976	-	■	■	■	■
Dark tinted rear windows	070	-	○	○	■	■
16" steel wheels	878	■	■	■	-	-
16" alloy wheels	431	-	○	○	■	-
16" alloy wheels - exclusive Trekking design	432	-	-	-	-	■
Trekking look	4UV	-	-	-	-	■
Leather steering wheel and gear knob	318	-	- ⁽⁹⁾	- ⁽⁹⁾	■	■
Longitudinal roof bars ⁽²⁾	357	○	○	○	○	■
Pastel paint		○	○	○	○	○
16" alloy wheel rims		△	△	△	△	△
Floor mats with Doblò logo		△	△	△	△	△
Chromed door mirror covers		△	△	△	△	△
Work key covers (kit of 2)		△	△	△	△	△
Freetime key covers (kit of 2)		△	△	△	△	△
Balls key covers (kit of 2)		△	△	△	△	△
Pearl white key cover		△	△	△	△	△
Glossy red key cover		△	△	△	△	△
Matte silver grey key cover		△	△	△	△	△
Glossy black key cover		△	△	△	△	△
Sfrenato grey key cover		△	△	△	△	△
Swarovski flowers key cover		△	△	△	△	△
Swarovski snake key cover		△	△	△	△	△
Tyre valve caps with logo		△	△	△	△	△
Italian flag badge		△	△	△	△	△
Chrome-plated number plate holder (only for versions with tailgate)		△	△	△	△	△
Ivory oddments pocket on tunnel		△	△	△	△	△
Black oddments pocket on tunnel		△	△	△	△	△
Polycarbonate kick plate kit with Doblò logo		△	△	△	△	△

		POP	EASY	EASY AIR	LOUNGE	TREKKING
Comfort / Functionality						
Start&Stop ⁽³⁾	5DE	■	■/○	■/○	○	○
DPF (not available on 1.4)		-	■/-	■/-	■	■
Remote central locking		■	■	■	■	■
Automatic door lock		■	■	■	■	■
Electric front windows		■	■	■	■	■
Headlight alignment corrector		■	■	■	■	■
Height and reach adjustable steering wheel		■	■	■	■	■
Power steering		■	■	■	■	■
2 sliding side doors		■	■	■	■	■
Split folding (60/40) rear seat		■	■	■	■	■
Locking fuel cap		■	■	■	■	■
Electric rear windows	023	-	○	○	■	■
Electrically adjustable heated door mirrors	041	-	■	■	-	-
Electrically adjustable and foldable door mirrors	341	-	○	○	■	■
Air conditioning	025	○	-	■	■	■
Automatic climate control	140	-	-	○	○	○
Extendable luggage compartment cover	104	-	■	■	○	○
Child mirror	68F	-	-	-	■	■
Height adjustable parcel shelf ⁽⁴⁾	209	-	○	○	■	■

		POP	EASY	EASY AIR	LOUNGE	TREKKING
Comfort / Functionality						
Height adjustable driver's seat with lumbar support + arm rest	626/627	-	■	■	■	■
Passenger seat folding to table ⁽⁵⁾	785	○	○	○	○	○
Cruise control	416	-	○	○	■	○
Exterior temperature sensor	5BY	■	■	■	■	■
Twin glazed rear doors	519	○	○	○	○	○
High roof ⁽⁶⁾	360	-	○	○	○	-
Rear power socket	4HG	-	■	■	■	■
Smoking kit	989	○	○	○	○	○
Front storage shelf		■	■	■	■	■
Locking glove compartment		■	■	■	■	■
Front and rear mudflaps	990	○	○	○	○	○
Traction+ system	941	-	-	-	-	■
Cross bars with aluminium roof rails PC/PL (70 kg) - 2 bars ⁽²⁾		△	△	△	△	△
Aluminium bicycle carrier		△	△	△	△	△
Ski rack for 3 or 4 pairs of skis		△	△	△	△	△
Windsurf rack		△	△	△	△	△
Canoe rack		△	△	△	△	△
Freebox		△	△	△	△	△
Fixed tow hook (for use with wiring harness)		△	△	△	△	△
Retractable pull-out tow hook (for use with wiring harness)		△	△	△	△	△
Wind deflectors for front side windows		△	△	△	△	△
Fragrance diffuser		△	△	△	△	△
Rear seat protective sheet		△	△	△	△	△
Luggage compartment lining protective sheet		△	△	△	△	△
Luggage net		△	△	△	△	△
Luggage compartment protective liner (only for versions equipped with rigid rear shelf)		△	△	△	△	△
Clothes hook		△	△	△	△	△
Roof box (360 l and 490 l)		△	△	△	△	△
Partition net for animals		△	△	△	△	△
Car cover for internal use		△	△	△	△	△

		POP	EASY	EASY AIR	LOUNGE	TREKKING
Safety						
ESP (stability control system) with ASR/MSR and Hill Holder		■	■	■	■	■
Driver and passenger airbags		■	■	■	■	■
Full size side airbags	505	○	○	○	■	■
Rear head restraints		■	■	■	■	■
Fix&Go tyre kit		■	■	■	■	■
Fog lights	097	-	■	■	■	■
Rear parking sensors	508	-	○	○	■	■
Alarm predisposition	388	○	○	○	○	○
Anti whiplash front head restraints	42F	○	○	○	○	○
Deadlocks	064	○	○	○	○	○
Full size spare wheel	980	○	○	○	○	○
DRL - Daytime Running Lights		■	■	■	■	■
TPMS (Tyre Pressure Monitoring System)		■	■	■	■	■
ABS+EBD (Electronic Brake Distribution)		■	■	■	■	■
ISOFIX child seat attachments		■	■	■	■	■
Conventional alarm for vehicles with or without remote control		△	△	△	△	△

		POP	EASY	EASY AIR	LOUNGE	TREKKING
Safety						
Baby Safe Plus child restraint system (0-13 kg)		△	△	△	△	△
Forward platform (FWF 9-18 kg)		△	△	△	△	△
Rearward platform (RWF 0-18 kg)		△	△	△	△	△
Junior child restraint system (15-36 kg)		△	△	△	△	△
Isofix child restraint system (0-18 kg)		△	△	△	△	△
Additional head restraint		△	△	△	△	△
Scout seat (5-36 kg)		△	△	△	△	△
Rear splash guards		△	△	△	△	△
Anti-theft wheel bolts		△	△	△	△	△
Audio / Telematics						
Radio/CD player		■	-	-	-	-
Radio/CD/MP3 player	41A	-	■	■	-	-
Radio/CD/MP3 player with Blue&Me™ (bluetooth system), USB and AUX	717	-	- ⁽⁹⁾	- ⁽⁹⁾	■	■

		POP	EASY	EASY AIR	LOUNGE	TREKKING
Audio / Telematics						
Loud speakers	4HL	-	■	■	■	■
Audio controls mounted on steering wheel	245	-	■	■	■	■
Dash Dock for TomTom	6EN	○	○	○	○	○
Cable with winder for iPod		△	△	△	△	△
Packs						
BLUE&SOUND Pack (leather steering wheel and gear knob and hands free Blue&Me™ system with USB and AUX)	4CA	-	○	○	-	-
ECO Pack (reduces CO ₂ emissions from 137/144 ⁽¹⁾ g/km to 124/132 ⁽¹⁾ g/km and combined consumption from 54.3/51.4 ⁽¹⁾ mpg to 60.1/56.5 ⁽¹⁾ mpg) ⁽⁷⁾	5KQ	-	○	○	○	○
FAMILY Pack (7-seats, rear windows quarter lights, longitudinal roof bars) ⁽⁸⁾	66G	-	○	○	○	○

■ = standard ○ = optional - = not available △ = accessory

⁽¹⁾ Trekking version.
⁽²⁾ Incompatible with high roof (opt. 360).
⁽³⁾ Standard on 1.4 petrol engines. Requires ECO Pack (opt. 5KQ) on diesel engines.
⁽⁴⁾ Incompatible with Family Pack (opt. 66G).
⁽⁵⁾ Incompatible with full size side airbags (opt. 505).
⁽⁶⁾ Requires twin glazed rear doors (opt. 519) and it is incompatible with longitudinal roof bars (opt. 357) and Family Pack (opt. 66G).
⁽⁷⁾ Available on diesel versions only. Requires Start&Stop (opt. 5DE).
⁽⁸⁾ Incompatible with high adjustable parcel shelf (opt. 209) and high roof (opt. 360). Lounge and Trekking versions require the addition of the extendable luggage compartment cover (opt. 104).
⁽⁹⁾ Available as part of the Blue&Sound Pack only.



BODY COLOURS

Pastel



168 Breakcore Red



249 Ambient White



479 Line Blue

Metallic



722 New Indie Ivory



293 Flamenco Red



448 Hilibilly Blue



487 Cool Jazz Blue



590 Neoclassical Bordeaux



695 Electroclash Grey



612 Minimal Grey



632 Rockabilly Black



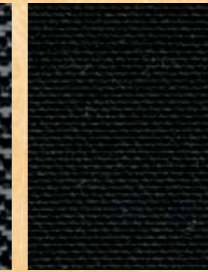
444 Magnetic Bronze
Exclusive for Trekking version

INTERIOR TRIM

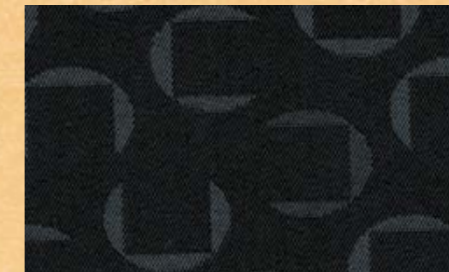
260
Star Grey



POP



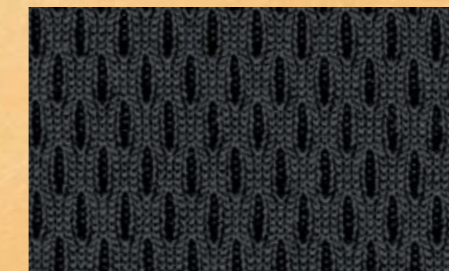
265
Pacman Grey



EASY



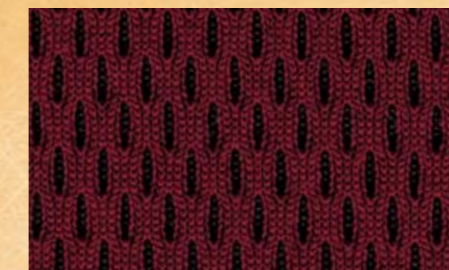
310
Tecnospace Grey



LOUNGE & TREKKING



329
Tecnospace Red



COLOUR/UPHOLSTERY MATCHING

	POP	EASY & EASY AIR	LOUNGE	TREKKING		
Code	260	265	310	329	310	329
Dashboard fascia	Star Grey	Pacman Grey	Tecnospace Grey	Tecnospace Red	Tecnospace Grey	Tecnospace Red
Fabric	Star Grey	Pacman Grey	Tecnospace Grey	Tecnospace Red	Tecnospace Grey	Tecnospace Red
PASTEL						
168 Breakcore Red	■	■	■	■	■	■
249 Ambient White	■	■	■	■	■	■
479 Line Blue	■	■	■	-	■	-
METALLIC (OPT. 210)						
722 New Indie Ivory	■	■	■	-	■	-
293 Flamenco Red	■	■	■	■	■	■
444 Magnetic Bronze	-	-	-	-	■	-
448 Hilibilly Blue	■	■	■	-	■	-
487 Cool Jazz Blue	■	■	■	-	■	-
590 Neoclassical Bordeaux	■	■	■	■	■	■
695 Electroclash Grey	■	■	■	■	■	■
612 Minimal Grey	■	■	■	■	■	■
632 Rockabilly Black	■	■	■	■	■	■



www.fiat.co.uk

FIAT FINANCIAL SERVICES*

Fiat Financial Services offers a comprehensive range of finance and insurance plans including Fiat i-Deal PCP, traditional Hire Purchase, Guaranteed Asset Protection Insurance and SMART Repair Insurance. Please ask your Fiat dealer for more information or visit the www.fiat.co.uk website. Written quotations available on request.

FIAT CONTRACT HIRE**

Fiat Contract Hire provides hassle free motoring for private and business customers - you benefit from low initial outlay, regular rentals and no worry about disposing of your vehicle at the end of the contract. You can also include a full maintenance package within the monthly rental. For more information please contact your Fiat dealer. Written quotations available on request.

*Fiat Financial Services is a trading style of FCA Automotive Services UK Ltd. FCA Automotive Services UK Ltd is authorised and regulated by the Financial Conduct Authority (Firm Reference Number 312683 and CCI-IP-421472). Credit available to anyone aged 18 or over subject to status. A guarantee may be required. Written quotations are available from FiatFinancial Services, PO Box 4465, Slough, SL1 0RW.

**Fiat Contract Hire is a trading style of FCA Fleet Services UK Ltd. FCA Fleet Services UK Ltd holds Interim Permissions with the Financial Conduct Authority for credit purposes (CCI-IP-439467). Credit available to anyone aged 18 or over subject to status. A guarantee may be required. Contract Hire facilities are available subject to credit approval. Written quotations are available from Fiat Contract Hire, PO Box 4590, Slough, SL1 0WU.