



# JEEP WRANGLER

MY17 BUYER'S GUIDE  
FEBRUARY 2017

Jeep®

Jeep   
**THERE  
& BACK  
GUARANTEE** ^



# Jeep MY17 WRANGLER

## MODEL HIGHLIGHTS\*

### SPORT

#### Engine

3.6L Pentastar V6 Petrol  
209kW 347Nm

2.8L Turbo Diesel I-4  
147kW 460Nm

#### Transmission

5-Speed Automatic  
6-Speed Manual  
Four Wheel Drive

#### 4x4 System

Command-Trac® 4x4 System

#### Body Styles

2-Door Petrol  
4-Door Petrol  
4-Door Diesel

#### Features:

- 2 Speed Transfer Case
- Removable Metal Doors
- Removable Soft Top
- Fold Flat Windscreen
- Heavy Duty Off Road Suspension
- 18-Inch Alloy Wheels
- Matching Full Size Spare Wheel
- Cruise Control
- Front Fog Lamps
- Leather Wrapped Steering Wheel
- Underbody Skid Plates
- Wash Out Interior

### OVERLAND

#### Engine

3.6L Pentastar V6 Petrol  
209kW 347Nm

#### Transmission

5-Speed Automatic  
Four Wheel Drive

#### 4x4 System

Command-Trac® 4x4 System

#### Body Styles

2-Door Petrol  
4-Door Petrol

#### Features (in addition, or replacing Sport):

- Leather Seats
- Heated Front Seats
- Removable Hard Top
- Freedom Panels
- Body Colour Hard Top
- Body Colour Fender Flares
- Body Colour Grille with Silver Accents
- Uconnect 6.5-Inch Touchscreen
- Satellite Navigation
- Reverse Parking Camera
- 7-Speaker Alpine Premium Audio System including Subwoofer
- Tubular Side Steps
- Deep Tint Sunscreen Glass

### RUBICON

#### Engine

3.6L Pentastar V6 Petrol  
209kW 347Nm

#### Transmission

5-Speed Automatic  
Four Wheel Drive

#### 4x4 System

Rock-Trac® 4x4 System

#### Body Styles

4-Door Petrol

#### Features (in addition, or replacing Sport):

- Tru-Lok® Front & Rear Locking Differentials
- Electronic Front Stabiliser Bar Disconnect
- Heavy Duty Front & Rear Axles
- Rock Rails
- Removable Black Hard Top
- Freedom Panels
- Deep Tint Sunscreen Glass
- Rubicon Hood Decal
- 7-Speaker Alpine Premium Audio System including Subwoofer
- Deep Tint Sunscreen Glass



# Jeep MY17 WRANGLER

## SPECIFICATIONS\*

Capability & Performance	Code	Sport 2-Door	Sport 4-Door	Overland 2-Door	Overland 4-Door	Rubicon 4-Door	Comfort & Convenience	Code	Sport 2-Door	Sport 4-Door	Overland 2-Door	Overland 4-Door	Rubicon 4-Door
Command-Trac® 4x4 System	DHE	●	●	●	●	-	Automatic Headlamps	LMG	-	-	●	●	●
Rock-Trac® 4x4 System	DHW	-	-	-	-	●	Auto Dimming Inside Rear Vision Mirror	GNX	●	●	●	●	●
2-Speed Transfer Case	-	●	●	●	●	●	Cruise Control	NHM	●	●	●	●	●
Tru-Lok® Front & Rear Locking Differentials	DSE	-	-	-	-	●	Air Conditioning with Automatic Temperature Control	HAB	●	●	●	●	●
Electronic Front Stabilizer Bar Disconnect	SHG	-	-	-	-	●	Power Adjustable, Heated Mirrors	GTB	●	●	●	●	●
Dana 30 Solid Front Axle	DJR	●	●	●	●	-	Power Windows	JPY	●	●	●	●	●
Dana 44 Heavy Duty Solid Front Axle	DJS	-	-	-	-	●	12V Auxiliary Power Outlet	JJJ	●	●	●	●	●
Dana 44 Heavy Duty Solid Rear Axle	DRZ	●	●	●	●	●	Tilt Steering Column Adjustment	SUA	●	●	●	●	●
Rear Axle Ratio 3.73	DME	●	●	●	●	-	Torx Tool Kit	XE4	●	●	●	●	●
Rear Axle Ratio 4.10	DMF	-	-	-	-	●	Freedom Panel Storage Bag <sup>(2)</sup>	CS2	○	○	●	●	●
Skid Plate - Fuel Tank	XEE	●	●	●	●	●	Rear Window Defroster <sup>(2)</sup>	GFA	○	○	●	●	●
Skid Plate - Transfer Case	XEF	●	●	●	●	●							
Heavy Duty Suspension with Gas Shocks	SDU	●	●	●	●	●	<b>Audio &amp; Connectivity</b>	<b>Code</b>	<b>Sport 2-Door</b>	<b>Sport 4-Door</b>	<b>Overland 2-Door</b>	<b>Overland 4-Door</b>	<b>Rubicon 4-Door</b>
Hill Descent Control <sup>(3)</sup>	BNH	●	●	●	●	●	Uconnect® 135 Bluetooth® Phone & Audio	REL					
Matching Spare Alloy Wheel	WKB	●	●	●	●	●	AM/FM Radio	RSQ	●	●	-	-	●
Wash-Out Interior with Removable Carpet and Drain Plugs	-	●	●	●	●	●	Single Disc CD	-					
							Uconnect® 230 <sup>(2)</sup>	REQ					
<b>Safety, Security &amp; Driver Assistance</b>	<b>Code</b>	<b>Sport 2-Door</b>	<b>Sport 4-Door</b>	<b>Overland 2-Door</b>	<b>Overland 4-Door</b>	<b>Rubicon 4-Door</b>	Bluetooth® Phone & Audio	RSQ	○	○	-	-	-
Electronic Stability Control	BNB	●	●	●	●	●	AM/FM Radio	-					
Hill Start Assist	BNG	●	●	●	●	●	6 Disc CD	-					
Traction Control	BNM	●	●	●	●	●	Uconnect® 735N	RHP					
Electronic Roll Mitigation	BNS	●	●	●	●	●	6.5-Inch Colour Touchscreen	RDY					
Trailer Sway Control	BNT	●	●	●	●	●	Satellite Navigation	JLN					
Heavy Duty 4-Wheel Disc Brakes with ABS	BR6	●	●	●	●	●	Bluetooth® Phone & Audio	RSQ	-	-	●	●	○
Roll Bar with Padding	CLM	●	●	●	●	●	AM/FM Radio	-					
Remote Central Locking	GXW	●	●	●	●	●	Single Disc CD	-					
Engine Immobiliser	-	●	●	●	●	●	40GB Hard Drive (20GB Available)	XRE					
4 Airbags (2 Front, 2 Side Seat)	-	●	●	●	●	●	6-Speaker Audio System	RGX	●	●	-	-	-
Reverse Parking Camera	-	-	-	●	●	-	7-Speaker Alpine Premium Audio System including Subwoofer <sup>(2)</sup>	RC4	○	○	●	●	●
Tyre Pressure Monitoring Warning Lamp	LAB	●	●	●	●	●	Uconnect® Voice Command with Bluetooth®	RSQ	●	●	●	●	●
							Steering Wheel Mounted Audio Controls	RDZ	●	●	●	●	●
							Remote USB Port (Centre Console)	RSX	●	●	●	●	●

Standard (●) Option (○) Not Offered (-)

# Jeep MY17 WRANGLER

## SPECIFICATIONS\*

Exterior	Code	Sport 2-Door	Sport 4-Door	Overland 2-Door	Overland 4-Door	Rubicon 4-Door	Interior	Code	Sport 2-Door	Sport 4-Door	Overland 2-Door	Overland 4-Door	Rubicon 4-Door
Alloy Wheels - 18-Inch	-	●	●	●	●	●	Seat Fabric - Cloth	-	●	●	-	-	●
Tubular Side Steps <sup>(2)</sup>	MRK	○	○	●	●	-	Seat Fabric - Leather	-	-	-	●	●	○
Rock Rails	MEF	-	-	-	-	●	Seat - Heated Front	JPM	-	-	●	●	○
Grille - Body Colour	MFT	●	●	-	-	●	Rear Seat - Folding	CFM	●	-	●	-	-
Grille - Body Colour with Silver Accent	MF4	-	-	●	●	-	Rear Seat - 60/40 Split Folding	CFN	-	●	-	●	●
Fender Flares - Black	MUG	●	●	-	-	●	Floor Mats - Front	CLC	●	-	●	-	-
Fender Flares - Body Colour	MML	-	-	●	●	○	Floor Mats - Front & Rear	CLE	-	●	-	●	●
Soft Top - Black	MX4	●	●	-	-	●	Cargo Mat - Boot	CKL	●	●	●	●	●
Soft Top - Premium Black	MX7	-	-	●	●	-	Steering Wheel - Leather Wrapped	SCV	●	●	●	●	●
Hard Top - Removable, Black <sup>(2)</sup>	MX3	○	○	-	-	●	Shift Knob - Chrome & Leather Wrapped	CVC	●	●	●	●	●
Hard Top - Removable, Body Colour	MX1	-	-	●	●	○	Front Seat Back Map Pockets	CSM	●	●	●	●	●
Hard Top - Freedom Panels	-	○	○	●	●	●	Cargo Area Tie Down Loops	CKT	●	●	●	●	●
Deep Tint Sunscreen Windows <sup>(2)</sup>	GCD	○	○	●	●	●							
Removable Full Metal Doors	GCF	●	●	●	●	●							
Fold Down Windscreen	-	●	●	●	●	●							
Halogen Headlamps	LMJ	●	●	●	●	●							
Halogen Fog Lamps	LNJ	●	●	●	●	●							
Tailgate Mounted Full Size Tyre Carrier	TBR	●	●	●	●	●							
Spare Tyre Cover	CSA	●	●	●	●	●							
Rubicon Hood Decal	MGQ	-	-	-	-	●							
Trail Rated Badge - Left, Front Fender	MT2	●	●	●	●	●							
Fixed Long Mast Antenna - Right, Front Fender	RDD	●	●	●	●	●							
Black Locking Fuel Filler Door	XJ5	●	●	●	●	●							
Rear Window Wiper <sup>(2)</sup>	JHB	○	○	●	●	●							

Standard (●) Option (○) Not Offered (-)



# Jeep MY17 WRANGLER

## GROUPS & OPTIONS\*

	Code	Comments	Sport	Overland	Rubicon
<b>Renegade Pack</b> 7-Speaker Alpine Premium Audio System including Subwoofer Uconnect® 230 - Bluetooth® Phone & Audio, AM/FM Radio, 6 Disc CD Deep Tint Sunscreen Windows Tubular Side Steps Dual Top Group Black 3-Piece Hard Top Freedom Panel Storage Bag Tinted Rear Quarter and Liftgate Windows Rear Window Defroster Rear Window Wiper	RC4 <b>REQ</b> <b>GCD</b> <b>MRK</b> <b>AEM</b> MX3 CS2 GED GFA JHB	-	O	-	-
<b>Uconnect 735N</b> 6.5-Inch Colour Touchscreen Satellite Navigation Bluetooth® Phone & Audio AM/FM Radio Single Disc CD 40GB Hard Drive (20GB Available)	<b>RHP</b> RDY JLN RSQ - - XRE	-	O	S	O
<b>Body Colour 3-Piece Hard Top</b> Deep Tint Sunscreen Windows Freedom Panel Storage Bag Tinted Rear Quarter and Liftgate Windows Rear Window Defroster Rear Window Wiper/Washer	<b>MX1</b> GCD CS2 GED GFA JHB	-	-	S	O
<b>Body Colour Fender Flares</b>	<b>MML</b>	m/h: MX1	-	S	O
<b>18-Inch 7-Spoke Alloy Wheel</b>	<b>WPT</b>	-	-	O	-

Option (O) Standard (S) Not Available (-) Must Have (m/h)

### WHEELS\*



WK1 - 18-Inch 5-Spoke Alloy Wheel  
(Standard on Sport)



WFC - 18-Inch Alloy Wheel  
(Standard on Overland)



WPT - 18-Inch 7-Spoke Alloy Wheel  
(Option on Overland)



WK3 - 18-Inch Alloy Wheel  
(Standard on Rubicon)

# Jeep MY17 WRANGLER

## EXTERIOR COLOURS\*



PX8 - Black  
(Standard)



PW8 - Bright White  
(Standard)



PSC - Billet Silver  
(Option)



PAU - Granite Crystal  
(Option)



PSQ - Rhino  
(Option)



PUA - Gobi  
(Option)



PRC - Firecracker Red  
(Option)



PQB - Chief  
(Option)



PHG - Xtreme Purple  
(Option)



PJK - Hypergreen  
(Option - Limited Availability)



# Jeep MY17 WRANGLER

## INTERIOR TRIMS\*

### SPORT



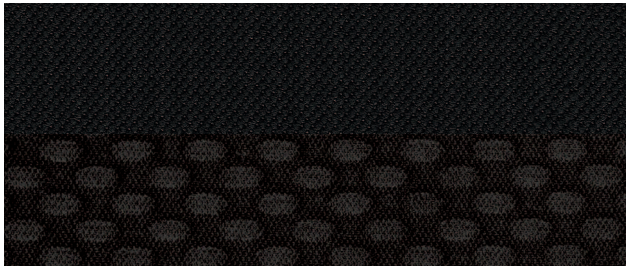
A7X9 - Black Cloth  
(Standard - Sport)

### OVERLAND

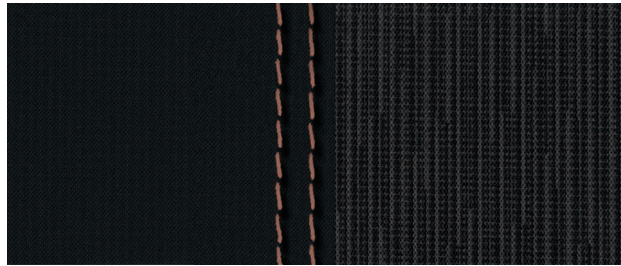


NLX9 - Black Moab Leather  
(Standard - Overland)

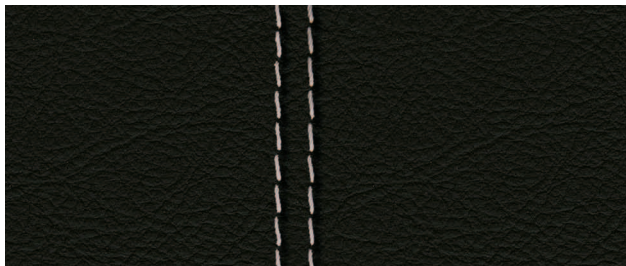
### RUBICON



A7X9 - Black Cloth  
(Standard - Rubicon)



A7XV - Black Cloth with Tan Interior  
(No Cost Option - Rubicon)



ALX9 - Black McKinley Leather  
(Option - Rubicon)



ALXV - Black & Tan McKinley Leather with Tan Interior  
(Option - Rubicon)



# Jeep MY17 WRANGLER

MOPAR® GENUINE ACCESSORIES\*\*



STAINLESS STEEL DOOR SILL GUARDS



HITCH RECEIVER



TAILGATE REINFORCEMENT ASSEMBLY



LIGHT BAR



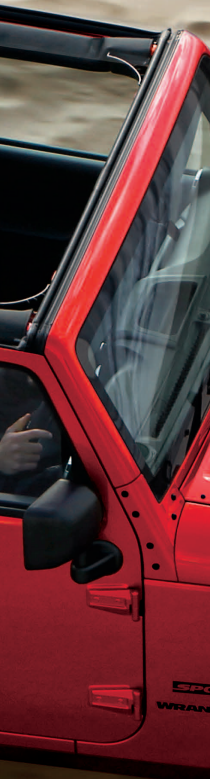
TENT KIT

(\*\*) Overseas models shown in imagery, used for visual guidance only. Some features displayed may not be available in Australia. Please consult your preferred Jeep Dealer for information on Accessories currently provided.



# Jeep MY17 WRANGLER

## TECHNICAL INFORMATION\*



	3.6L 6MT 4x4 2-Door	3.6L 5AT 4x4 2-Door	3.6L 6MT 4x4 4-Door	3.6L 5AT 4x4 4-Door	2.8L 5AT 4x4 4-Door
<b>Body &amp; Chassis</b>					
Layout	Front Engine, 4x4				
Construction	Body on Frame Chassis, Open Steel Body				
Assembly Plant	Toledo Assembly Comple, Toledo, Ohio, USA				
Doors	2		4		
Seats	4		5		
<b>Powertrain</b>					
Description	3.6L Pentastar V6			2.8L Turbo Diesel I-4	
Capacity	3,604			2,776	
Cylinders	6			4	
Configuration	V			Inline	
Aspiration (Natural / Forced)	Naturally Aspirated			Turbocharged	
Max. Power (kW @ rpm)	209 @ 6,350			147 @ 3,600	
Max. Torque (Nm @ rpm)	347 @ 4,300			460 @ 1,600	
Valves	24			16	
Compression	10.2:1			16.5:1	
Bore & Stroke (mm)	96.0 x 83.0			94.0 x 100.0	
<b>Fuel</b>					
System	Sequential, Multi Port, Electronic Fuel Injection				Direct Injection, Common Rail Diesel
Type	Unleaded Petrol				Diesel
Tank Capacity (L)	70.4		85.0		
Economy (Urban, L/100km)	15.7	15.6	16.6	16.1 (Sport) 16.0 (Rubicon)	10.3
Economy (Highway, L/100km)	8.5	8.8	9.1	9.2 (Sport) 9.5 (Rubicon)	7.9
Economy (Combined, L/100km)	11.2	11.3	11.8	11.7 (Sport) 11.9 (Rubicon)	8.8
<b>Emissions</b>					
Emission Standard Met	6				5
Emissions (Combined, CO <sub>2</sub> g/km)	259	263	275	273 (Sport) 276 (Rubicon)	230

	3.6L 6MT 4x4 2-Door	3.6L 5AT 4x4 2-Door	3.6L 6MT 4x4 4-Door	3.6L 5AT 4x4 4-Door	2.8L 5AT 4x4 4-Door
<b>Weights</b>					
Max. Braked Towing Capacity (kg)	1,000		2,000		2,300
Max. Unbraked Towing Capacity (kg)	750		750		750
Max. Tongue Download (kg) <sup>(4)</sup>	100		200		230
Gross Vehicle Mass (kg)	2,268		2,540		2,585
Gross Combined Mass (kg) Incl. Braked Towing	3,168		4,340		4,655
<b>Transmission</b>					
Type	6-Speed Manual	5-Speed Automatic	6-Speed Manual	5-Speed Automatic	
Ratio - 1st	4.46	3.59	4.46	3.59	
Ratio - 2nd	2.61	2.19	2.61	2.19	
Ratio - 3rd	1.72	1.41	1.72	1.41	
Ratio - 4th	1.25	1.00	1.25	1.00	
Ratio - 5th	1.00	0.83	1.00	0.83	
Ratio - 6th	0.79	-	0.79	-	
Reverse	4.06	3.16	4.06	3.16	
<b>Performance</b>					
Acceleration (0-100km/h)	8.1		8.6	8.9	10.7
Maximum Speed (km/h)	180		180	180	172
<b>Brakes</b>					
Front - Type	Ventilated disk, floating single piston caliper with ABS				
Front - Size (mm)	332 x 28				
Rear - Type	Solid disk, floating single piston caliper with ABS				
Rear - Size (mm)	316 x 12				
<b>Steering</b>					
Type	Power, recirculating ball with damper				
Kerb to Kerb Turning Circle (m)	10.4		13.1		
Column Adjustment	Tilt				

# Jeep MY17 WRANGLER

## TECHNICAL INFORMATION\*

Weights & Capacities	Sport 2-Door 3.6L 6MT 4x4	Sport 2-Door 3.6L 5AT 4x4	Overland 2-Door 3.6L 5AT 4x4	Unlimited Sport 4-Door 3.6L 6MT 4x4	Unlimited Sport 4-Door 3.6L 5AT 4x4	Unlimited Overland 4-Door 3.6L 5AT 4x4	Unlimited Rubicon 4-Door 3.6L 5AT 4x4	Unlimited Sport 4-Door 2.8L 5AT 4x4	
<b>Dimensions</b>									
Length (mm)	4,223			4,751					
Width (mm)	1,873			1,877					
Height (mm)				1,865					
Wheelbase (mm)	2,424			2,947					
Front Track (mm)				1,572					
Rear Track (mm)				1,572					
<b>Wheel &amp; Tyre</b>									
Wheel Type	Alloy								
Wheel Size (Inches)	18.0 x 7.5								
Tyre Size	255 / 70								
Spare Wheel	Tailgate Mounted - Matching Alloy Wheel								
<b>Suspension</b>									
Type	Coil								
Front	Solid Axle. Coil Springs with High Pressure Gas Charged Shock Absorbers. Leading Arms, Track Bar, Stabiliser Bar								
Rear	Solid Axle. Coil Springs with High Pressure Gas Charged Shock Absorbers. Trailing Arms, Track Bar, Stabiliser Bar								
Electronic Stabiliser Bar Disconnect	-						Front	-	
<b>4x4 Specifics</b>									
4x4 System	Command-Trac® 4x4				Rock-Trac® 4x4		Command-Trac® 4x4		
Operating Mode	Part-Time, Shift on the Fly. 4-Mode: 4x2 High, 4x4 High, Neutral, 4x4 Low								
Transfer Case	2-Speed								
Low Range Ratio	2.72:1			4.0:1		2.72:1			
Rear Axle Ratio	3.73			4.10		3.73			
Front Axle	Dana 30			Dana 44 Heavy Duty		Dana 30			
Rear Axle	Dana 44 Heavy Duty								
Electronic Locking Differentials	-						Front & Rear	-	
Running Clearance (mm)	241			238		242		238	
Approach Angle	35								
Breakover Angle	22			18					
Departure Angle	28								
Wading Depth (mm)	760 <sup>(5)</sup>								
<b>Warranty &amp; Service</b>									
Service Intervals	Sport 2-Door 3.6L 6MT 4x4			Sport 2-Door 3.6L 5AT 4x4		Overland 2-Door 3.6L 5AT 4x4		Unlimited Sport 4-Door 3.6L 6MT 4x4	
Warranty	Sport 2-Door 3.6L 6MT 4x4			Sport 2-Door 3.6L 5AT 4x4		Overland 2-Door 3.6L 5AT 4x4		Unlimited Sport 4-Door 3.6L 6MT 4x4	
Roadside Assist	Sport 2-Door 3.6L 6MT 4x4			Sport 2-Door 3.6L 5AT 4x4		Overland 2-Door 3.6L 5AT 4x4		Unlimited Sport 4-Door 3.6L 6MT 4x4	



**Jeep**<sup>®</sup>

**FCA**  
FIAT CHRYSLER AUTOMOBILES

[jeep.com.au](http://jeep.com.au)

\*Overseas models may be shown in imagery, Australian model and actual colours may vary. All product illustrations and specifications are based upon current information. FCA Australia Pty Ltd ABN 23 125 956 505 trading as FCA Australia reserves the right to make changes from time to time, without notice or obligation, in prices, specifications, technical information, accessories, colours, materials and to change or discontinue models. All vehicles, models, features, colours and/or accessories shown may not be available in Australia from time to time or at all. "Optional" may mean available as an option but only at an additional cost. For the details of the vehicles, models, features, colours and/or accessories currently available in Australia, please contact an authorised Jeep Dealer.

(1) Fuel consumption figures are according to Australian Design Rule (ADR) 81/02. Driving style, road and traffic conditions, fitment of accessories, environmental influences and vehicle condition can lead to consumption figures which may differ from those calculated with these standards. (2) Packaged with Renegade Pack on Sport. (3) Only available with 5-speed automatic transmission. (4) Trailer tongue download subject to certain operating conditions. Please refer to Owner's Manual for full details. (5) This vehicle is capable of crossing through water at a depth of 760mm (30 inches) at speeds no greater than 8km/h (5mph). Water ingestion can occur causing damage to your vehicle that may not be covered by the New Vehicle Warranty.