



CHRYSLER 300

MY18 BUYER'S GUIDE
NOVEMBER 2017



MY18 300

MODEL HIGHLIGHTS*

300C LUXURY

Engine

3.6L Pentastar® V6 Petrol
210kW 340Nm

Transmission

8-Speed Automatic with Rotary E-Shift
Rear Wheel Drive

Performance

0-100km/h - 7.7 Seconds
Maximum Speed - 240 km/h

Fuel Consumption ⁽¹⁾

Combined Cycle (L/100km)
3.6L - 9.7

Features:

- 20-Inch Alloy Wheels
- Leather Seats
- 8.4-Inch Touchscreen
- Satellite Navigation
- 7-Inch Instrument Cluster Display
- Adaptive Bi-Xenon Headlights
- Dual-Zone Climate Control
- 7 Airbags
- Reverse Parking Camera
- Front and Rear Parking Sensors
- Heated Seats
- Ventilated Front Seats
- 9 Speaker Alpine® Audio System
- Apple CarPlay
- Android Auto

300 SRT CORE

Engine

6.4L HEMI® V8 Petrol
350kW 637Nm

Transmission

8-Speed Automatic with Rotary E-Shift
Rear Wheel Drive

Performance

0-100km/h - Mid 4 Second Range
Maximum Speed - 282 km/h

Fuel Consumption ⁽¹⁾

Combined Cycle (L/100km)
6.4L - 13.0

Features:

- 20-Inch Alloy Wheels
- SRT Performance Cloth Seats
- Brembo® High Performance Brakes
- Rear Limited Slip Differential (LSD)
- High Performance Sport Suspension
- Performance Tuned Steering
- Active Exhaust
- Heavy Duty Engine Cooling
- Steering Wheel Paddle Shift
- 8.4-Inch Touchscreen
- Satellite Navigation
- Apple CarPlay
- Android Auto
- Configurable Drive Modes
- SRT Performance Pages
- Launch Control
- 300 km/h Speedometer

300 SRT

Engine

6.4L HEMI® V8 Petrol
350kW 637Nm

Transmission

8-Speed Automatic with Rotary E-Shift
Rear Wheel Drive

Performance

0-100km/h - Mid 4 Second Range
Maximum Speed - 282 km/h

Fuel Consumption ⁽¹⁾

Combined Cycle (L/100km)
6.4L - 13.0

Features (in addition, or replacing SRT Core):

- 20-Inch Forged Alloy Wheels
- SRT Performance Leather & Suede Seats
- Adaptive Damping Suspension
- 19 Speaker Harman Kardon® Audio System
- Adaptive Cruise Control
- Lane Departure Warning
- Forward Collision Warning
- Blind Spot Monitoring
- Rear Cross Path Detection
- Red Brembo® Calipers
- Bright Pedals
- Real Carbon Fibre Interior Trim





MY18 300

SPECIFICATIONS*

Comfort & Convenience	Code	300C Luxury	SRT Core	SRT	Performance	Code	300C Luxury	SRT Core	SRT
Dual-Zone Climate Control	HAF	●	●	●	Brembo® High Performance Brakes	BR4	-	●	●
Push Button Start	GX4	●	●	●	Knock Back Mitigation	BHE	-	●	●
Remote Proximity Keyless Entry	GXD	●	●	●	Rear Limited Slip Differential (LSD)	DSA	-	●	●
Remote Start	XBM	●	●	●	High Performance Sport Suspension	SDX	-	●	●
Heated Front Seats	JPM	●	-	●	Adaptive Damping Suspension	SMC	-	-	●
Heated Rear Seats	JPZ	●	-	●	Performance Tuned Steering	SBX	-	●	●
Heated Steering Wheel	NHS	●	-	●	Active Exhaust	NEE	-	●	●
Heated & Cooled Front Cupholder (Centre Console)	XGY	●	-	●	Heavy Duty Engine Cooling	XDL	-	●	●
Ventilated Front Seats	CAJ	●	-	●	Configurable Drive Modes	XHK	-	●	●
Power Windows	JP3	●	●	●	SRT Performance Pages	JAV	-	●	●
Power Bootlid Release	JPC	●	●	●	Launch Control	-	-	●	●
Power Rear Window Sunshade ^(^)	JP9	●	-	-	300 km/h Speedometer	JDU	-	●	●
Power Tilt & Telescopic Steering Column Adjust	SUB	●	●	●	Safety, Security & Driver Assistance	Code	300C Luxury	SRT Core	SRT
Power 8-Way Driver/Passenger Seats	JPT	●	●	●	Parkview™ Reverse Parking Camera	XAC	●	●	●
Power 4-Way Driver/Passenger Lumbar	JRN	●	●	●	ParkSense® Front & Rear Parking Sensors	XAG	●	●	●
Automatic Headlamps	LMG	●	●	●	7 Airbags (2 Front, 2 Side Curtain, 2 Side Seat, 1 Driver Knee)	-	●	●	●
Automatic Headlamp Levelling	JKJ	●	●	●	Full Speed Forward Collision Warning Plus	LSU	●	-	●
Automatic High Beam Control	LMS	●	-	●	Lane Departure Warning Plus	LAS	●	-	●
Rain Sensitive Windshield Wipers	JHC	●	-	●	Blind Spot Monitoring	XAN	●	-	●
Radio/Driver Seat/Mirror Memory	LEW	●	●	●	Rear Cross Path Detection	-	●	-	●
Auto Dimming Rear View Mirror - Internal	GNK	●	●	●	Advanced Brake Assist	BGG	●	-	●
Auto Dimming Rear View Mirror - Exterior	-	●	●	●	Cruise Control	NHM	-	●	-
Auto Adjusting Rear View Mirror - Exterior, In Reverse	LEX	●	●	●	Cruise Control - Adaptive with Stop Function	NH3	●	-	●
Power Folding Exterior Side Mirrors	LER	●	●	●	Tyre Pressure Monitoring	XGM	●	●	●
Side Exterior Mirrors with Defrost	NHJ	●	●	●	Electronic Stability Control	BNB	●	-	-
Rear Window Defroster	GFA	●	●	●	Electronic Stability Control - 3-Mode	BNC	-	●	●
					Electronic Roll Mitigation	BNS	●	●	●
					Traction Control	BNP	●	●	●
					Ready Alert Braking	BHD	●	●	●
					Rain Brake Support	BHC	●	●	●
					Hill Hold Control	BNG	●	●	●
					Trailer Sway Control	BNT	●	-	-
					Engine Immobiliser	GXX	●	●	●
					Active Head Restraints	CBD	●	●	●
					Front Passenger Seat Belt Alert	LAX	●	●	●

(^) Not available with AY1 - Harman Kardon® Audio Group

Standard (●) Option (○) Not Offered (-)



MY18 300

GROUPS, OPTIONS*

	Code	Comments	300C Luxury	SRT Core	SRT
Dual-Pane Panoramic Sunroof	GWJ	-	O	O	O
Harman Kardon® Audio Group 19 Harman Kardon® Greenedge Speakers 825 Watt Harman Kardon® Greenedge Amplifier	AY1 RCA RDH	Removes JQ8 - Power Rear Window Sunshade	O	-	S
Leather Interior Group Premium Leather Instrument Panel, Centre Console & Door Trim Luxury Front & Rear Floor Mats	AJD CD7 CLX	-	-	-	O
Laguna Leather Package Laguna Luxury Performance Leather	AJC *GJ	m/h AJD	-	-	O
Sunroof & Audio Package	GWJ + AY1	-	O	-	-
Sunroof & Leather Package	GWJ + AJD	-	-	-	O

Option (O) Standard (S) Not Available (-) Must Have (m/h) Not Available With (NAW)

WHEELS*



WDE - 20-Inch Alloy Wheels
(Standard on 300C Luxury)



WR2 - 20-Inch Alloy Wheels
(Standard on 300 SRT Core)

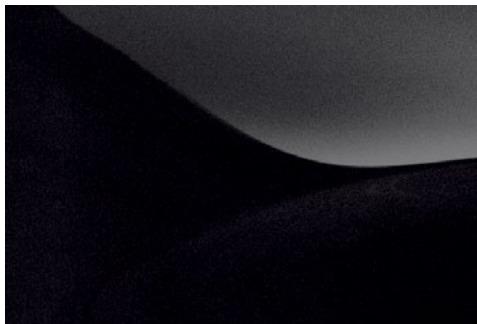


WSM - 20-Inch Forged Alloy Wheels
(Standard on 300 SRT)



MY18 300

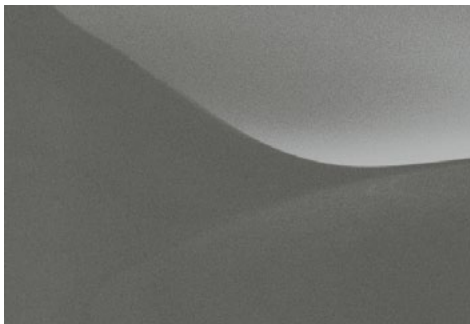
EXTERIOR COLOUR GUIDE*



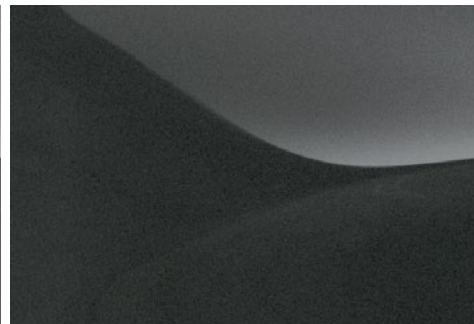
PX8 - Gloss Black
(Standard)



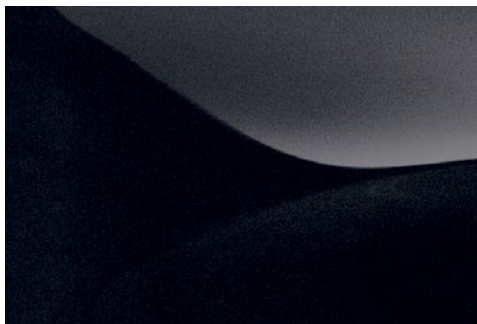
PW7 - Bright White
(Standard)



PSC - Billet Silver
(Option)



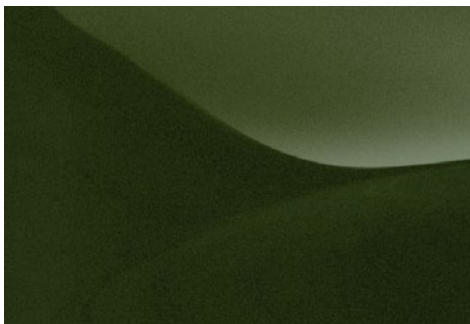
PDN - Ceramic Grey
(Option)



PAU - Granite Crystal
(Option)



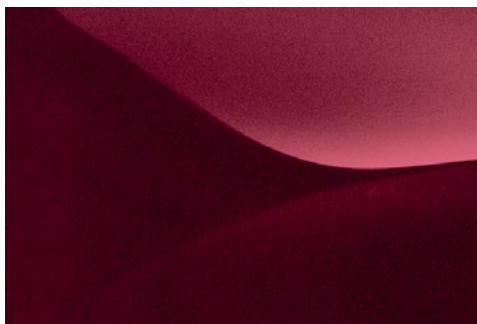
PAR - Maximum Steel
(Option)



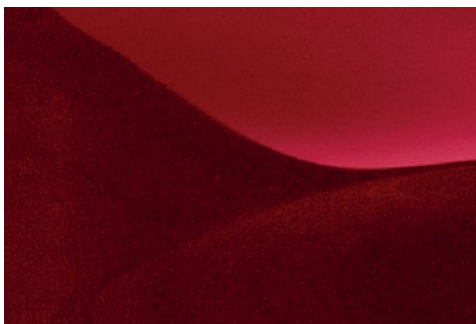
PFQ - Green Metallic
(Option)



PBM - Ocean Blue
(Option)



PRV - Velvet Red
(Option)



PRY - Redline Red
(Option)



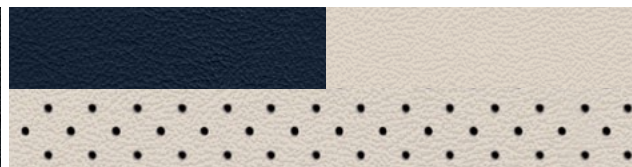


MY18 300

INTERIOR TRIM GUIDE*



ELX9 - Black Quilted and Perforated Nappa Leather
(Standard on 300C Luxury)



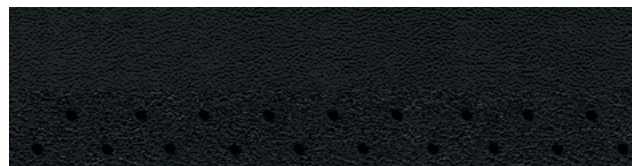
ELC3 - Indigo & Linen Quilted and Perforated Nappa Leather
(Option on 300C Luxury)



ELX8 - Deep Mocha Quilted and Perforated Nappa Leather
(Option on 300C Luxury)



W7X9 - Black Cloth
(Standard on 300 SRT Core)



T5X9 - Black Perforated Nappa Leather and Suede
(Standard on 300 SRT)



GJVX - Sepia Perforated Laguna Leather
(Option on 300 SRT)

COLOUR & TRIM MATRIX*

		300C Luxury			300 SRT Core	300 SRT		
Option Code		ELX9	ELC3	ELX8	A7X9	T5X9	GJVX	
Seats	Material	Nappa Leather			Limited Leather	Cloth	Nappa Leather & Suede	Laguna Leather
	Colour	Black	Indigo & Linen	Deep Mocha	Black	Black	Sepia	
Dashboard Insert	Material	Wood			Carbon Look	Carbon Fibre		
	Colour	Mocha			Dark	Dark		
Steering Wheel		Leather Wrapped			Leather Wrapped, SRT Flat Bottomed	Leather Wrapped, SRT Flat Bottomed		
Headliner		Black	Linen		Black	Black		
Exterior Colour								
	Gloss Black (PX8)	•	•	•	•	•	•	
	Bright White (PW7)	•	•	•	•	•	•	
	Maximum Steel (PAR)	•	•	•	•	•	•	
	Granite Crystal (PAU)	•	•	•	•	•	•	
	Billet Silver (PSC)	•	•	•	•	•	•	
	Ceramic Grey (PDN)	•	•	•	•	•	•	
	Green Metallic (PFQ)	•	-	•	•	•	•	
	Ocean Blue (PBM)	•	-	•	•	•	•	
	Velvet Red (PRV)	•	-	•	•	•	•	
	Redline Red (PRY)	-	-	-	•	•	•	

Available (•) Not Offered (-)



MY18 300

MOPAR® GENUINE ACCESSORIES*



SIDE WINDOW AIR DEFLECTORS



ILLUMINATED DOOR SILL GUARDS



BRIGHT PEDAL KIT



FULL VEHICLE COVER



HITCH-MOUNT BIKE CARRIER



ROOF-MOUNT BIKE CARRIER



PERFORMANCE SUSPENSION KIT



STRUT TOWER BRACE



MY18 300

TECHNICAL INFORMATION*

	300C Luxury 3.6L 8AT RWD	SRT Core 6.4L 8AT RWD	SRT 6.4L 8AT RWD
Body & Chassis			
Layout	Front Engine, Rear Wheel Drive		
Construction	Steel Unibody, Aluminium Bonnet		
Assembly Plant	Brampton Assembly Plant, Ontario, Canada		
Doors	4		
Seats	5		
Model Code	LXZR48-22R	LXZM48-21N	LXZX48-21X
Powertrain			
Description	3.6L Pentastar V6 Engine	6.4L HEMI V8 Engine	
Capacity	3,604	6,417	
Cylinders	6	8	
Configuration	V	V	
Aspiration (Natural / Forced)	Natural		
Max. Power (kW @ rpm)	210 @ 6350	350 @ 6150	
Max. Torque (Nm @ rpm)	340 @ 4300	637 @ 4250	
Valves	24	16	
Compression	10.2:1	10.9:1	
Bore & Stroke (mm)	96.0 x 83.0	103.9 x 94.5	
Fuel ⁽¹⁾			
System	Sequential, Multi Port, Electronic Fuel Injection	Adds Fuel Saver Mode	
Type	Unleaded Petrol		
Tank Capacity (L)	70		
Economy (Urban, L/100km) ⁽¹⁾	14.3	20.4	
Economy (Highway, L/100km) ⁽¹⁾	7.1	8.7	
Economy (Combined, L/100km) ⁽¹⁾	9.7	13.0	
Emissions ⁽¹⁾			
Emission Standard Met	6		
Emissions (Combined, CO ₂ g/km) ⁽¹⁾	227	303	
Weights			
Tare Weight (kg)	1,724	1,946	1,965
Gross Vehicle Mass (kg)	2,426		
Max. Braked Towing Capacity (kg)	1,724	450	
Max. Unbraked Towing Capacity (kg)	450	450	
Max. Tongue Download (kg) ⁽²⁾	172	45	
Gross Combined Mass (kg) Incl. Braked Towing	3,978	2,831	

	300C Luxury 3.6L 8AT RWD	SRT Core 6.4L 8AT RWD	SRT 6.4L 8AT RWD
Transmission			
Type	8-Speed Automatic Transmission with Steering Wheel Mounted Paddle Shifters		
Ratio - 1st	4.71	4.70	
Ratio - 2nd	3.14	3.13	
Ratio - 3rd	2.10	2.10	
Ratio - 4th	1.67	1.67	
Ratio - 5th	1.29	1.28	
Ratio - 6th	1.00	1.00	
Ratio - 7th	0.84	0.84	
Ratio - 8th	0.67	0.67	
Reverse	3.30	3.53	
Performance			
Acceleration (Seconds 0-100km/h)	7.7	Mid 4 Second Range	
Maximum Speed (km/h)	240	282	
Brakes			
Front - Type	Ventilated Disk, Two-Piston Floating Caliper with ABS	Ventilated & Slotted Disk, Brembo Fixed Four-Piston Caliper with ABS	
Front - Size (mm)	345 x 28	360 x 32	
Rear - Type	Ventilated Disk, Single Piston Floating Caliper with ABS	Ventilated & Slotted Disk, Brembo Fixed Four-Piston Caliper with ABS	
Rear - Size (mm)	320 x 22	350 x 28	
Steering			
Type	Rack-and-Pinion with Hydraulic Power Assist	SRT Tuned Rack-and-Pinion with Hydraulic Power Assist	
Turning Circle - Kerb to Kerb (m)	11.5		
Column Adjustment	Tilt & Telescopic		



MY18 300

TECHNICAL INFORMATION*

Weights & Capacities	300C Luxury 3.6L 8AT RWD	SRT Core 6.4L 8AT RWD	SRT 6.4L 8AT RWD
Dimensions			
Length (mm)	5,066		5,089
Width (mm)		1,902	
Height (mm)	1,488		1,478
Wheelbase (mm)		3,052	
Front Track (mm)	1,623		1,621
Rear Track (mm)	1,641		1,639
Running Clearance (mm)	140		122
Wheel & Tyre			
Wheel Type		Alloy	Forged Alloy
Wheel Size (Inches)	20 x 8.0		20 x 9.0
Tyre Size		245 / 45	
Spare Wheel	Space Saver - Steel Spare Wheel		Tyre Service Kit - No Spare Wheel
Suspension			
Type	Coil Suspension, Touring Tuned	Coil Suspension, SRT Tuned	Adaptive Damping Coil Suspension, SRT Tuned
Front	Independent SLA with high upper "A" arm. Coil spring over gas charged monotube shock absorbers and stabilizer bar.	Independent SLA with high upper "A" arm. Coil spring over Bilstein shock absorber. 32mm hollow stabilizer bar.	
Rear	Five-link independent with coil springs. Gas charged monotube shock absorbers. Stabilizer bar and isolated suspension cradle.	Five-link independent with coil springs. Bilstein shock absorbers. 19mm hollow stabilizer bar and isolated suspension cradle.	
Warranty & Service			
Service Intervals		12,000km / 12 months	
Warranty		3 year / 100,000km	
Roadside Assist		3 year / 100,000km	



FCA

FIAT CHRYSLER AUTOMOBILES

chrysler.com.au

*Overseas models may be shown in imagery, Australian model and actual colours may vary. All product illustrations and specifications are based upon current information. FCA Australia Pty Ltd ABN 23 125 956 505 trading as FCA Australia reserves the right to make changes from time to time, without notice or obligation, in prices, specifications, technical information, accessories, colours, materials and to change or discontinue models. All vehicles, models, features, colours and/or accessories shown may not be available in Australia from time to time or at all. "Optional" may mean available as an option but only at an additional cost. For the details of the vehicles, models, features, colours and/or accessories currently available in Australia, please contact an authorised Chrysler Dealer.

(1) Fuel consumption figures are according to Australian Design Rule (ADR) 81/02. Driving style, road and traffic conditions, fitment of accessories, environmental influences and vehicle condition can lead to consumption figures which may differ from those calculated with these standards. (2) Trailer tongue download subject to certain operating conditions. Please refer to Owner's Manual for full details.