



# JEEP CHEROKEE

MY18 BUYER'S GUIDE  
NOVEMBER 2017

Jeep®

Jeep   
**THERE  
& BACK  
GUARANTEE** ^



# Jeep MY18 CHEROKEE

## MODEL HIGHLIGHTS\*

### SPORT

#### Engine

2.4L Tigershark® Engine  
130kW 229Nm

#### Transmission

9-Speed Automatic  
Front Wheel Drive

#### Towing Capacity

Maximum Towing Capacity  
(Braked Trailer) - 2,000kg

#### Fuel Consumption <sup>(1)</sup>

Combined Cycle (L/100km)  
2.4L - 9.1

#### Features:

- 17-Inch Alloy Wheels
- 5.0-Inch Touchscreen
- Voice Command & Bluetooth®
- 7 Airbags & 5-Star ANCAP Rating <sup>(4)</sup>
- ParkView Reverse Parking Camera
- 3.5-Inch Instrument Cluster Display
- 6-Speaker Audio System
- LED Daytime Running Lights
- LED Tail Lamps
- Electric Park Brake
- Electric Power Steering

### LONGITUDE

#### Engine

3.2L Pentastar® V6 Engine  
200kW 315Nm

#### Transmission

9-Speed Automatic  
All Wheel Drive

#### Towing Capacity

Maximum Towing Capacity  
(Braked Trailer) - 2,200kg

#### Fuel Consumption <sup>(1)</sup>

Combined Cycle (L/100km)  
3.2L - 9.7

#### Features

(in addition to or replacing Sport):

- Jeep Active Drive I AWD System
- Jeep Selec-Terrain Traction Management System
- Dual Zone Climate Control
- Power Bootlid Release
- Rain Sensitive Windshield Wipers
- Automatic Headlamps
- Automatic Dimming Internal Rear Vision Mirror
- ParkSense® Rear Parking Sensors
- Leather Wrapped Steering Wheel
- Leather Wrapped Shift Knob
- 8-Way Power Front Seats
- 4-Way Power Lumbar Adjust
- Deep Tinted Privacy Glass
- Roof Rails
- Fog Lamps

### LIMITED

#### Engine

3.2L Pentastar® V6 Engine  
200kW 315Nm

#### Transmission

9-Speed Automatic  
All Wheel Drive

#### Towing Capacity

Maximum Towing Capacity  
(Braked Trailer) - 2,200kg

#### Fuel Consumption <sup>(1)</sup>

Combined Cycle (L/100km)  
3.2L - 9.7

#### Features

(in addition to or replacing Longitude):

- Leather Seats
- 18-Inch Alloy Wheels
- 8.4-Inch Touchscreen
- Satellite Navigation
- Bi-Xenon Headlamps
- 7-Inch Full Colour Instrument Cluster Display
- 9-Speaker Alpine Sound System
- ParkSense® Front Parking Sensors
- Heated Front Seats
- Vinyl Door Trim
- Bright Chrome Exterior Elements

### TRAILHAWK

#### Engine

3.2L Pentastar® V6 Engine  
200kW 315Nm

#### Transmission

9-Speed Automatic  
Four Wheel Drive

#### Towing Capacity

Maximum Towing Capacity  
(Braked Trailer) - 2,200kg

#### Fuel Consumption <sup>(1)</sup>

Combined Cycle (L/100km)  
3.2L - 10.1

#### Features

(in addition to or replacing Limited):

- Trail Rated
- Jeep Active Drive Lock 4x4 System
- Jeep Selec-Terrain with Rock Mode
- Off-Road Suspension with Raised Ride Height
- Two Speed Power Transfer Unit
- Rear Locking Differential
- Unique Front & Rear Fascia
- 17-Inch Alloy Wheels
- Black Anti-Glare Hood Decal
- Red Recovery Hooks
- Hill Descent Control
- 4 Underbody Skid Plates
- Trailhawk Leather Seats with Red Accent Stitch
- Trail Rated Badging



SPORT



LONGITUDE

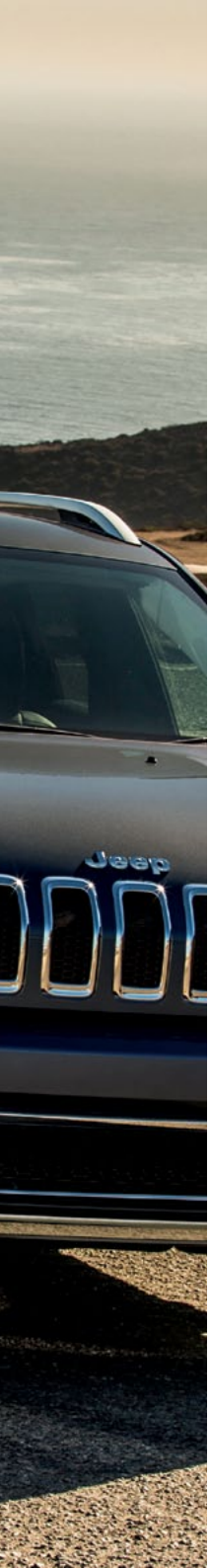


LIMITED



TRAILHAWK

# Jeep MY18 CHEROKEE SPECIFICATIONS\*



Comfort & Convenience	Code	Sport	Longitude	Limited	Trailhawk	Performance (Continued)	Code	Sport	Longitude	Limited	Trailhawk
Air Conditioning	HAC	●	-	-	-	Skid Plate - Fuel Tank	XEE	-	-	-	●
Dual Zone Climate Control	HAF	-	●	●	●	Skid Plate - Front Suspension	XEU	-	-	-	●
Push Button Start	GX4	-	○	○	○	Skid Plate - Transmission	XE9	-	-	-	●
Keyless Entry	GXP	●	●	●	●	Skid Plate - Underbody	XF3	-	-	-	●
Keyless Entry - Remote Proximity	GXD	-	○	○	○	<b>Safety, Security &amp; Driver Assistance</b>	<b>Code</b>	<b>Sport</b>	<b>Longitude</b>	<b>Limited</b>	<b>Trailhawk</b>
Remote Start	XBM	-	●	●	●	Parkview™ Reverse Parking Camera	XAC	●	●	●	●
Heated Front Seats	JPM	-	-	●	●	ParkSense® Rear Parking Sensors	XAA	○	●	-	-
Manual 6-Way Driver/Passenger Seats	JT6	●	-	-	-	ParkSense® Front & Rear Parking Sensors	XH4	-	-	●	●
Power 8-Way Driver/Passenger Seats	JPT	-	●	●	●	7 Airbags (2 Front, 2 Side Curtain, 2 Side Seat, 1 Driver Knee)	-	●	●	●	●
Power 4-Way Driver/Passenger Lumbar Adjust	JRN	-	●	●	●	Full Speed Forward Collision Warning Plus	LSU	-	-	○	○
Power Windows	JP3	●	●	●	●	Advanced Brake Assist	BGG	-	-	○	○
Power Bootlid Release	JRC	-	●	●	●	Lane Departure Warning Plus	LAS	-	-	○	○
Automatic Headlamps	LMG	-	●	●	●	Blind Spot Monitoring	XAN	-	-	○	○
Automatic High Beam Control	LMS	-	-	○	○	Rear Cross Path Detection	-	-	-	○	○
Automatic Dimming Internal Rear Vision Mirror	GNK	-	●	●	●	Parallel & Perpendicular Park Assist with Stop	XH5	-	-	○	○
Rain Sensitive Windshield Wipers	JHC	-	●	●	●	Cruise Control	NHM	●	●	●	●
Tilt & Telescopic Steering Column Adjust	SUD	●	●	●	●	Cruise Control - Adaptive with Stop & Go Function	NHZ	-	-	○	○
Power Locking Fuel Filler Door	XJA	●	●	●	●	Tyre Pressure Monitoring	XGM	●	●	●	●
Power Folding Exterior Mirrors	LER	●	●	●	●	Electronic Stability Control	BNB	●	●	●	●
Side Exterior Mirrors with Defrost	NHJ	●	●	●	●	Electronic Roll Mitigation	BNS	●	●	●	●
Rear Window Wiper	JHB	●	●	●	●	Traction Control	BNP	●	●	●	●
Rear Window Defroster	GFA	●	●	●	●	Trailer Sway Control	BNT	●	●	●	●
<b>Performance &amp; Capability</b>	<b>Code</b>	<b>Sport</b>	<b>Longitude</b>	<b>Limited</b>	<b>Trailhawk</b>	Engine Immobiliser	GXW	●	●	●	●
Jeep Active Drive I AWD System	DK2	-	●	●	-	Front Passenger Active Head Restraints	CDP	●	●	●	●
Jeep Active Drive Lock 4x4 System	XX9	-	-	-	●	Passenger Seat Belt Alert - Front	LAX	●	●	●	●
Two Speed Power Transfer Unit	-	-	-	-	●	Passenger Seat Belt Alert - Rear	LAU	●	●	●	-
Jeep Selec-Terrain Traction Management System	XAB	-	●	●	●						
Rear Locking Differential	DSH	-	-	-	●						
Off-Road Suspension	SDJ	-	-	-	●						
Heavy Duty Engine Cooling	NMC	-	●	●	●						
Auxiliary Transmission Cooler	NHB	●	●	●	●						
Disconnecting Rear Axle	-	-	●	●	●						
Hill Hold Control	BNG	●	●	●	●						
Hill Descent Control	BNH	-	●	●	●						
Steel Spare Wheel	TBB	●	●	●	●						
Black Anti-Glare Hood Decal	MYA	-	-	-	●						
Red Recovery Hooks (2 x Front, 1 x Rear)	XEW	-	-	-	●						

Standard (●) Option (○) Not Offered (-)

# Jeep MY18 CHEROKEE

## SPECIFICATIONS\*

Audio & Connectivity	Code	Sport	Longitude	Limited	Trailhawk	Exterior	Code	Sport	Longitude	Limited	Trailhawk
Uconnect® 5.0 with AM/FM Radio, Bluetooth® Phone/Audio	RJ2	●	●	-	-	Headlights - Halogen	LMC	●	●	-	-
5.0-Inch Touchscreen Display	RFU					Headlights - Bi-Xenon	LMP	-	-	●	●
Uconnect® 8.4 with AM/FM/Digital Radio, Bluetooth® Phone/Audio	RJ4					LED Daytime Running Headlamps	LMZ	●	●	●	●
Satellite Navigation	JLN	-	○	●	●	LED Tail Lamps	LAY	●	●	●	●
8.4-Inch Touchscreen Display	RFL					Fog Lamps	LNJ	-	-	-	●
Digital Radio (DAB+)	RS9					Fog & Cornering Lamps	LNP	-	●	●	-
6 Speaker Audio System	RCG	●	●	-	-	Headlamp Washer	JHS	-	-	●	●
9 Speaker Alpine® Audio System including Subwoofer & 506 Watt Amplifier	RC3	-	○	●	●	Dual-Pane Panoramic Sunroof	GWJ	-	-	○	○
Integrated Voice Command with Bluetooth®	XRB	●	●	●	●	Alloy Wheels - 17-Inch	-	●	●	-	●
Steering Wheel Mounted Audio Controls	RDZ	-	●	●	●	Alloy Wheels - 18-Inch	-	-	-	●	-
Media Hub (SD/USB/AUX)	CU7	●	●	●	●	Roof Rails - Bright	MW1	-	●	●	-
Remote USB Port - Centre Console	RSX	-	○	●	●	Roof Rails - Neutral Grey	MW3	-	-	-	●
12V Power Outlet - Centre Console	JJJ	●	●	●	●	Glass - Solar Control	GAM	●	-	-	-
12V Power Outlet - Cargo Area	JJM	●	●	●	●	Glass - Tinted (#)	GEG	-	●	●	●
230V Power Outlet - Rear of Centre Console	JKZ	-	○	○	○	Grille - Bright Surround	MYV	●	●	●	
						Grille - Neutral Grey	MF4	-	-	-	●
Interior	Code	Sport	Longitude	Limited	Trailhawk	Side Window Surrounds - Black	MMF	●	-	-	●
Seat Fabric - Cloth	-	●	●	-	-	Side Window Surrounds - Bright	MMP	-	●	●	-
Seat Fabric - Leather	-	-	-	●	●	Door Handles - Body Colour	MNK	●	●	●	●
Steering Wheel - Urethane	SCA	●	-	-	-	Exterior Mirrors - Supplemental Turn Signals	LEB	●	●	●	●
Steering Wheel - Leather Wrapped	SCC	-	●	●	●	Exterior Mirrors - Body Colour	LEP	●	●	●	-
Shift Knob - Urethane	CV1	●	-	-	-	Exterior Mirrors - Neutral Grey	LE6	-	-	-	●
Shift Knob - Leather Wrapped	CVB	-	●	●	●	Shark Fin Antenna - Body Colour	RHC	●	●	●	●
Door Trim - Vinyl	CBG	-	-	●	●	Trail Rated Badge	MT2	-	-	-	●
Instrument Cluster - 3.5-Inch Display	JAY	●	●	-	-						
Instrument Cluster - 7.0-Inch Display	JAJ	-	-	●	●						
Electric Park Brake	XC4	●	●	●	●						
Height Adjustable Front Seat Belts	CGD	●	●	●	●						
Rear Centre Armrest with Cupholder	CSN	●	●	●	●						
Rear Seat - 60/40 Split Folding	CAK	●	●	●	●						
Sliding Sun Visors with Illuminated Vanity Mirrors	GNC	●	●	●	●						
Floor Mats - Carpeted Front & Rear	CLE	●	●	●	-						
Floor Mats - All Weather Front & Rear	CLF	-	-	-	●						
Cargo Area Tonneau Cover	CSD	●	●	●	●						
Cargo Management System	CLJ	●	●	●	●						
Cargo Tie Down Loops - Boot	CKT	●	●	●	●						

(#) Glass - Tinted applies to rear passenger and rear cargo windows only.  
Front passenger windows and windscreen are not tinted.

Standard (●) Option (○) Not Offered (-)

# Jeep MY18 CHEROKEE

## GROUPS & OPTIONS\*

	Code	Comments	Sport	Longitude	Limited	Trailhawk
<b>ParkSense Rear Park Assist System</b> Air Conditioning	<b>XAA</b> HAA	-	O	S	S	S
<b>Sound Tech Group</b> Satellite Navigation 8.4-Inch Touchscreen Display Digital Radio (DAB+) 9 Speaker Alpine® Audio System including Subwoofer 506 Watt Amplifier Remote USB Port	<b>AA2</b> JLN RFL RS9 RC3 - RSX	-	-	O	S	S
<b>Electronics Convenience Group</b> Keyless Entry - Remote Proximity Push Button Start 230V / 50Hz Auxiliary Power Outlet	<b>AFC</b> GXD GX4 JKZ	-	-	O	O	O
<b>Technology Group</b> Lane Departure Warning Plus Auto High Beam Headlamp Control Full Speed Forward Collision Warn Plus Adaptive Cruise Control with Stop & Go Function Blind Spot Monitoring & Rear Cross Path Detection Parallel & Perpendicular Park Assist with Stop Advanced Brake Assist	<b>ADG</b> LAS LMS LSU NHZ XAN XH5 BGG	-	-	-	O	O
<b>Dual Pane Panoramic Sunroof</b>	<b>GWJ</b>	-	-	-	O	O
<b>17-Inch Black Alloy Wheels</b>	<b>WFK</b>	-	-	-	-	O

Option (O) Standard (S) Not Available (-)

### WHEELS\*



WAC - 17-Inch Alloy Wheels  
(Standard on Sport & Longitude)



WPU - 18-Inch Painted Alloy Wheels  
(Standard on Limited from 15-June 2017)



WAD - 17-Inch Alloy Wheels  
(Standard on Trailhawk)



WFK - 17-Inch Black Alloy Wheels  
(Option on Trailhawk)

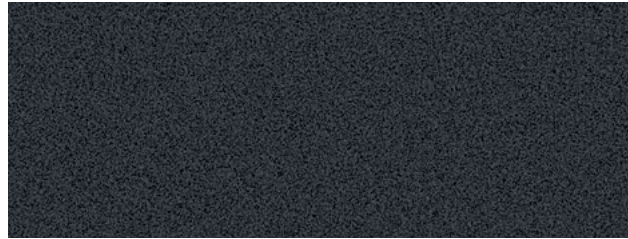


# Jeep MY18 CHEROKEE

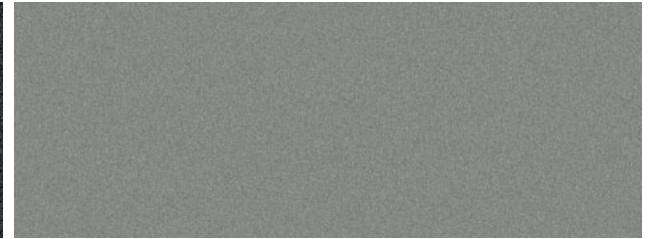
## EXTERIOR COLOUR GUIDE\*



PW7 - Bright White  
(Standard)



PAU - Granite Crystal  
(Option)



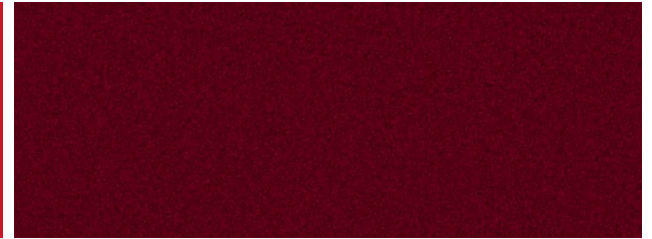
PSC - Billet Silver  
(Option)



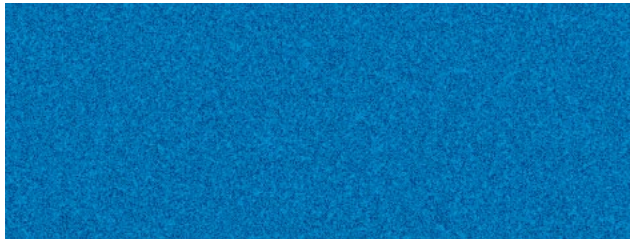
PSQ - Rhino  
(Option)



PRC - Firecracker Red  
(Option - Late Availability)



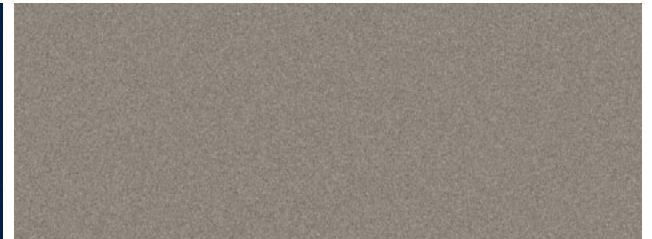
PRV - Velvet Red  
(Option - Late Availability)



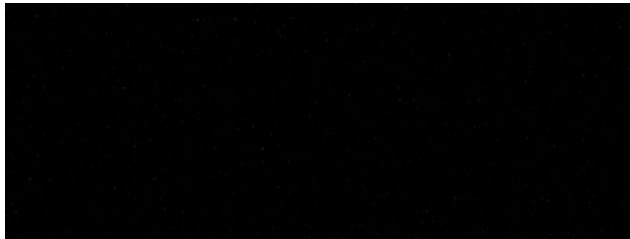
PBJ - Hydro Blue  
(Option)



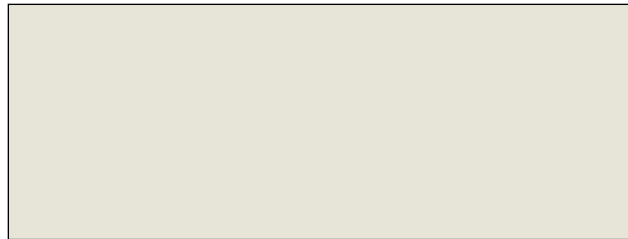
PPX - Patriot Blue  
(Option)



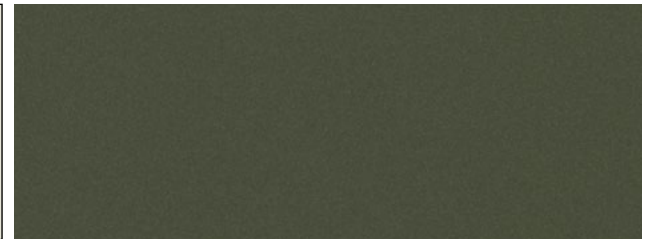
PT6 - Light Brownstone  
(Option)



PXJ - Diamond Black  
(Option)



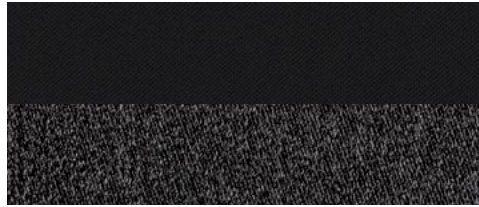
PWQ - Pearl White  
(Option - Late Availability)



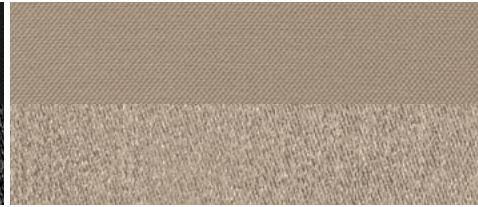
PFP - Olive Green  
(Option - Late Availability)

# Jeep MY18 CHEROKEE

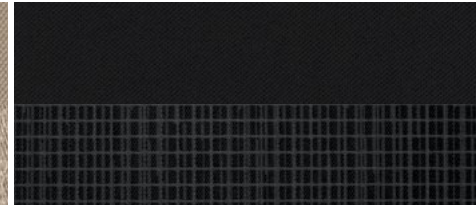
## INTERIOR TRIM GUIDE\*



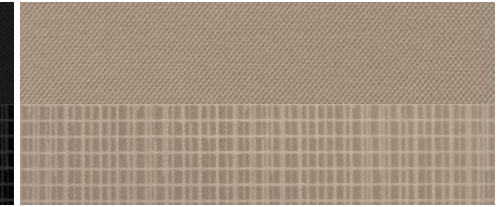
A7X9 - Black Cloth  
(Standard on Sport)



A7XL - Black & Light Frost Beige Cloth  
(Option on Sport)



A5X9 - Black Cloth  
(Standard on Longitude)



A5XL - Black & Light Frost Beige Cloth  
(Option on Longitude)



ALX9 - Black Leather  
(Standard on Limited)



ALXL - Black & Light Frost Beige Leather  
(Option on Limited)



TLX9 - Black Leather with Red Accent Stitch  
(Standard on Trailhawk)



TLU5 - Brown Leather with Red Accent Stitch  
(Option on Trailhawk)

### COLOUR & TRIM MATRIX\*

	Sport		Longitude		Limited		Trailhawk	
Option Code	A7X9	A7XL	A5X9	A5XL	ALX9	ALXL	TLX9	TLU5
Seat Material	Cloth	Cloth	Cloth	Cloth	Leather	Leather	Leather	Leather
Seat Colour	Black	Beige	Black	Beige	Black	Beige	Black	Brown
Bezel Colour	Silver		Silver		Silver		Silver	
Steering Wheel	Urethane		Leather Wrapped		Leather Wrapped		Leather Wrapped	
Headliner	Light		Light		Light		Light	
Exterior Colour								
Bright White (PW7)	●	●	●	●	●	●	●	●
Granite Crystal (PAU)	-	-	●	●	●	●	●	●
Billet Silver (PSC)	●	●	●	●	●	●	●	●
Rhino (PSQ)	●	●	●	●	●	●	●	●
Freccracker Red (PRC)	-	-	●	-	●	-	●	-
Velvet Red (PRV)	●	●	●	●	●	●	●	●
Hydro Blue (PBJ)	-	-	●	-	●	-	●	-
Patriot Blue (PPX)	●	●	●	●	●	●	●	-
Light Brownstone (PT6)	●	●	●	●	●	●	●	●
Diamond Black (PXJ)	●	●	●	●	●	●	●	●
Pearl White (PWQ)	-	-	●	●	●	●	●	●
Olive Green (PFP)	●	●	●	●	●	●	●	●

Available (●) Not Offered (-)



# Jeep MY18 CHEROKEE

MOPAR® GENUINE ACCESSORIES\*



STORAGE LOCKER



COLLAPSIBLE CARGO TOTE



MOULDED CARGO MAT



HITCH-MOUNTED BIKE CARRIER



ROOF-MOUNTED BIKE CARRIER



TENT KIT

(\*\*) Overseas models shown in imagery, used for visual guidance only. Some features displayed may not be available in Australia. Please consult your preferred Jeep Dealer for information on Accessories currently provided.



# Jeep MY18 CHEROKEE

## TECHNICAL INFORMATION\*

	Sport 2.4L 9AT FWD	Longitude 3.2L 9AT AWD	Limited 3.2L 9AT AWD	Trailhawk 3.2L 9AT 4x4
<b>Body &amp; Chassis</b>				
Layout	Front Engine, FWD	Front Engine, AWD		Front Engine, 4WD
Construction	Steel Unibody			
Assembly Plant	Toledo Assembly Complex, Toledo, Ohio, USA.			
Doors	5			
Seats	5			
Model Code	KLBL74-24A	KLUM74-26J	KLUP74-26G	KLUH74-27E
<b>Powertrain</b>				
Description	2.4L Tigershark® Engine	3.2L Pentastar® V6 Engine with Stop/Start (ESS)		
Capacity	2,360	3,239		
Cylinders	4	6		
Configuration	Inline	V		
Aspiration (Natural / Forced)	Natural			
Max. Power (kW @ rpm)	130 @ 6400	200 @ 6500		
Max. Torque (Nm @ rpm)	229 @ 3900	315 @ 4300		
Valves	16	24		
Compression	10.0:1	10.7:1		
Bore & Stroke (mm)	88.0 x 97.0	91.0 x 83.0		
Engine Stop/Start	-	Standard		
<b>Fuel <sup>(1)</sup></b>				
System	Sequential, Multiport, Electronic Fuel Injection			
Type	Unleaded Petrol			
Tank Capacity (L)	59.8			
Economy (Urban, L/100km) <sup>(1)</sup>	12.7	13.1	13.3	
Economy (Highway, L/100km) <sup>(1)</sup>	6.9	7.7	8.3	
Economy (Combined, L/100km) <sup>(1)</sup>	9.1	9.7	10.1	
<b>Emissions <sup>(1)</sup></b>				
Emission Standard Met	6			
Emissions (Combined, CO <sub>2</sub> g/km) <sup>(1)</sup>	211	226	235	
<b>Performance</b>				
Acceleration (Seconds 0-100km/h)	10.5	8.1	8.4	
Maximum Speed (km/h)	196	206	180	

	Sport 2.4L 9AT FWD	Longitude 3.2L 9AT AWD	Limited 3.2L 9AT AWD	Trailhawk 3.2L 9AT 4x4
<b>Transmission</b>				
Tare Vehicle Weight (kg)	1,638	1,795	1,806	1,936
Max. Braked Towing Capacity (kg)	2,000	2,200		
Max. Unbraked Towing Capacity (kg)	750			
Max. Tongue Download (kg) <sup>(2)</sup>	200	220		
Gross Vehicle Mass (kg)	2,291	2,435		2,495
Gross Combined Mass (kg) Incl. Braked Towing	4,091	4,415		4,475
Tow Hook Weight Rating (kg)	-			3,742
Roof Rack Load Limit (kg)	-	68		
<b>Transmission</b>				
Type	9-Speed Automatic Transmission			
Ratio - 1st	4.70			
Ratio - 2nd	2.84			
Ratio - 3rd	1.91			
Ratio - 4th	1.38			
Ratio - 5th	1.00			
Ratio - 6th	0.81			
Ratio - 7th	0.70			
Ratio - 8th	0.58			
Ratio - 9th	0.48			
Reverse	3.81			
<b>Brakes</b>				
Front - Type	Ventilated Disk, Floating Single Piston Caliper with ABS	Ventilated Disk, Floating Twin Piston Caliper with ABS		
Front - Size (mm)	330 x 28			
Rear - Type	Solid Disk, Single Piston Floating Caliper with ABS			
Rear - Size (mm)	278 x 12	320 x 12		
<b>Steering</b>				
Type	Electric, Rack-and-Pinion Power Steering (EPS)			
Turning Circle - Kerb to Kerb (m)	11.5	11.6		
Column Adjustment	Tilt & Telescopic			

# Jeep MY18 CHEROKEE

## TECHNICAL INFORMATION\*

Weights & Capacities	Sport 2.4L 9AT FWD	Longitude 3.2L 9AT AWD	Limited 3.2L 9AT AWD	Trailhawk 3.2L 9AT 4x4
<b>Dimensions</b>				
Length (mm)	4,623		4,624	4,626
Width (mm)		1,859		1,904
Height (mm)	1,631		1,634	1,686
Wheelbase (mm)	2,699		2,700	2,719
Front Track (mm)		1,586		1,606
Rear Track (mm)		1,584		1,604
<b>Wheel &amp; Tyre</b>				
Wheel Type	Alloy			
Wheel Size (Inches)	17 x 7.0		18 x 7.0	17 x 7.5
Tyre Size	225 / 60		225 / 55	245 / 65
Spare Wheel	Full Size Spare - Steel Wheel		225 / 60 / R17 - Steel Spare Wheel	Full Size Spare - Steel Wheel
<b>Suspension</b>				
Type	Coil			
Front	McPherson Struts, One-Piece Aluminium Sub-Frame, Coil-Over Shock Absorbers, Aluminium Lower Control Arms and Stabilizer Bar			
Rear	Multi-Link Suspension, Isolated High-Strength Steel Rear Cradle, Coil-Over Shock Absorbers, Aluminium Lateral Links and Stabilizer Bar			
<b>4x4 Specifics</b>				
4x4 System	-		Jeep Active Drive I AWD	Jeep Active Drive Lock 4x4
Operating Mode	-		Part-Time, Seamlessly Engages AWD / 4x4 at any speed	
Power Transfer Unit	-		1 Speed	2 Speed
Rear Locking Differential		-		Standard
Disconnecting Rear Axle	-		Standard	
Running Clearance (mm)		185		221
Approach Angle	16.7		18.9	29.9
Breakover Angle	17.7		19.5	22.9
Departure Angle	24.6		25.0	32.2
Wading Depth (mm)	-		405 <sup>(3)</sup>	480 <sup>(3)</sup>
<b>Warranty &amp; Service</b>				
Service Intervals	12,000 km / 12 months			
Warranty	5 year / 100,000 km <sup>(5)</sup>			
Roadside Assist	Lifetime Roadside Assist when you Service through Jeep <sup>(6)</sup>			



**Jeep**<sup>®</sup>

**FCA**  
FIAT CHRYSLER AUTOMOBILES

[jeep.com.au](http://jeep.com.au)

\*Overseas models may be shown in imagery, Australian model and actual colours may vary. All product illustrations and specifications are based upon current information. FCA Australia Pty Ltd ABN 23 125 956 505 trading as FCA Australia reserves the right to make changes from time to time, without notice or obligation, in prices, specifications, technical information, accessories, colours, materials and to change or discontinue models. All vehicles, models, features, colours and/or accessories shown may not be available in Australia from time to time or at all. "Optional" may mean available as an option but only at an additional cost. For the details of the vehicles, models, features, colours and/or accessories currently available in Australia, please contact an authorised Jeep Dealer. (^) Terms & conditions apply. Please visit [www.jeep.com.au/there-and-back](http://www.jeep.com.au/there-and-back) or contact an authorised Jeep Dealer for full terms & conditions.

(1) Fuel consumption figures are according to Australian Design Rule (ADR) 81/02. Driving style, road and traffic conditions, fitment of accessories, environmental influences and vehicle condition can lead to consumption figures which may differ from those calculated with these standards. (2) Trailer tongue download subject to certain operating conditions. Please refer to Owner's Manual for full details. (3) Avoid driving in standing water deeper than 405mm (16 inches) for Longitude & Limited variants, or 480mm (19 inches) for Trailhawk variants. Reduce speed appropriately to minimise wave effects. Maximum speed in water is less than 8 km/h (5 mp/h). (4) This ANCAP safety rating applies to variants with a 4 cylinder engine. Other variants are unrated. (5) 5 years from the date of vehicle registration or 100,000km (whichever comes first). (6) After your warranty period expires, scheduled maintenance services must be conducted through a Jeep Authorised Dealership at manufacturer specified intervals to maintain Lifetime Roadside Assist. Free Roadside assist is not redeemable for cash.