

The 2023 Sorento



Movement that inspires



For every road you take.

Equipped for adventure and infused with attitude, the 2023 Sorento is engineered to help you pursue whatever you set your sights on. We gave the Sorento a powerful engine to back up its bold styling, while standard all-wheel drive, along with advanced driver-assistance technologies provides extra help when you need it. Drive your own way — in the 2023 Kia Sorento.



Take command of every moment.

With an abundance of premium standard and available features, Sorento's modern cockpit puts you firmly in control.

¹ Available feature. See features page or visit kia.ca for full details. International model shown.



Heads-up display (HUD)¹ lets you keep your eyes on the road by subtly projecting key driving information on the windshield.



Wireless charging^{1,3} keeps your smartphone fully charged while you're on the road.



Blind-view monitor^{1,2} activates within the instrument panel when you turn on the blinker to change lanes, to display the blind spot in the direction of your turn signal.

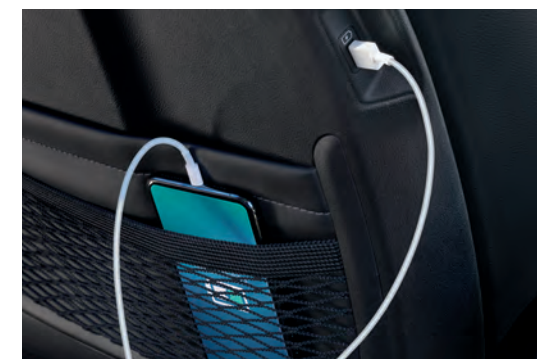


Find your sweet spot.

We crafted Sorento's cabin to be thoroughly comfortable, and filled with an impressive range of standard and available premium features. Combined with the latest in technology, Sorento will indulge you with confidence.



Dual-zone automatic climate control¹ lets you set your ideal cabin temperature.



USB charging located throughout the cabin to charge everyone's devices.

¹ Available feature. See features page or visit kia.ca for full details. International model shown.

You've got room for that.

What's an adventure without your gear? Sorento gets you wherever you're going - with everything you want to bring along.



Spacious cargo area

is designed for multiple configurations, easy access, and endless adventure.

Smart-power liftgate¹

opens automatically when you stand behind it for three seconds with your Smart Key — and closes with the push of a button.

50:50 split-folding 2nd and 3rd row seats¹

provide more versatility for passengers and cargo.

¹ Available feature. See features page or visit kia.ca for full details. International model shown.

Safety covered from every angle.

Using the latest sensing and processing technology, the Sorento helps you stay aware of your position on the road, and can even step in and prevent collisions.



Advanced forward collision avoidance assist²

is designed to alert you of a potential collision with a vehicle or pedestrian, and can apply the brakes to reduce or avoid impact. An available junction turning function¹ will warn you with an audible alert if it detects a vehicle approaching yours when you are making a left turn at an intersection.

Blind-spot collision-avoidance assist^{1,2}

uses radar to detect vehicles in your blind spot and may apply braking power when an approaching vehicle is detected within a certain distance, next to or behind your vehicle.

Lane keeping assist²

detects your vehicle getting close to lane markers, and can apply corrective adjustments to help prevent you from drifting into another lane.

Lane follow assist²

uses a camera at the front windshield to detect lane markers on the road to help keep you in the centre of your lane.

¹ Available feature. See features page or visit kia.ca for full details.

Features

LX+

| EXTERIOR | SAFETY | TECHNOLOGY | INTERIOR |
|--|--|---|---|
| <ul style="list-style-type: none"> • 17" alloy wheels • Temporary spare tire • Automatic headlights • LED MFR headlights • LED positioning lights • LED daytime running lights • LED high mounted stop lamp • Solar glass windshield and front doors • Sound-reducing windshield • Privacy tinted rear door glass • Power and heated sideview mirrors with signal repeaters • Body coloured sideview mirrors • Body coloured door handles • Satin chrome grille garnish • Satin chrome beltline trim • Rear spoiler • Splash guards | <ul style="list-style-type: none"> • 7 airbags • Electronic stability control (ESC) • 4-wheel anti-lock braking system (ABS) • Hill-assist control (HAC) • Downhill brake control (DBC) • High beam assist (HBA) • Trailer stability assist (TSA) • Forward collision-avoidance assist (FCA)² • Lane keeping assist system (LKAS)² • Lane following assist (LFA)² • Tire pressure monitoring system (TPMS) • Immobilizer • Rearview camera² • Low washer fluid warning indicator | <ul style="list-style-type: none"> • 8" Display audio • 6-speaker audio • AM/FM/MP3/HD radio • Front and rear USB charging ports • Bluetooth® hands-free cell phone connectivity^{3,7} • Apple CarPlay® and Android Auto™ smartphone integration^{3,8,9} • 4.2" Supervision LCD/TFT instrument cluster • Trip computer • Steering wheel-mounted audio controls • Keyless entry • 12V cabin power outlet • 12V cargo power outlet • Cruise control • Drive/Terrain Mode Select | <ul style="list-style-type: none"> • Air conditioning • Rear climate ventilation • 7-passenger seating • Cloth seats • Easy walk-in 2nd row • 60:40 split-folding 2nd row seats • 50:50 split-folding 3rd row seats • Height adjustable driver's seat • Front seat back pockets • Heated front seats • Tilt and telescopic steering wheel • Express up/down driver window • Obstacle-detecting driver window • Metal painted interior door handles • 2nd row centre armrest with cupholder • Under floor storage tray • Illuminated vanity mirrors |

LX PREMIUM - adds to or upgrades from LX+

| EXTERIOR | SAFETY | TECHNOLOGY | INTERIOR |
|--|--|--|---|
| <ul style="list-style-type: none"> • 18" machined-finish alloy wheels • Laminated front door glass | <ul style="list-style-type: none"> • Blind spot collision avoidance assist² • Rear cross-traffic collision avoidance assist² • Rear parking sensors² | <ul style="list-style-type: none"> • Automatic defog system • Smart key with push-button start • Wireless phone charger³ | <ul style="list-style-type: none"> • Dual-zone automatic climate control • Power adjustable driver's seat • 2-way driver's seat lumbar support • Heated steering wheel • Leather-wrapped steering wheel • Leather-wrapped gear shift knob |

X-LINE - adds to or upgrades from LX PREMIUM

| EXTERIOR | TECHNOLOGY | INTERIOR |
|---|--|--|
| <ul style="list-style-type: none"> • X-Line exterior package • 20" machined-finish grey alloy wheels • X-Line exclusive raised suspension height • Silver painted grille • Silver painted front and rear skid plates • Matte black exterior garnish • Bridge-type roof rails • Trailer lighting pre-wiring and enhanced cooling | <ul style="list-style-type: none"> • Electronic parking brake with auto hold function • Steering wheel mounted paddle shifters | <ul style="list-style-type: none"> • 6-passenger seating with 2nd row captain's chairs |

EX - adds to or upgrades from X-LINE

| EXTERIOR | TECHNOLOGY | INTERIOR |
|--|---|--|
| <ul style="list-style-type: none"> • 20" machined-finish black alloy wheels • Full LED headlights • Sport bumpers • Gloss black grille and spoiler garnish • Black low profile roof rails | <ul style="list-style-type: none"> • SiriusXM® satellite radio⁶ • Kia Connect^{3,5} • Auto-dimming rearview mirror • HomeLink® system¹¹ • Smart power liftgate | <ul style="list-style-type: none"> • Leather seats (synthetic) • Power adjustable passenger seat • Interior wood grain trim |

EX+ - adds to or upgrades from EX

| EXTERIOR | SAFETY | TECHNOLOGY | INTERIOR |
|---|---|---|--|
| <ul style="list-style-type: none"> • LED combination taillights • LED fog lights • Automatic power folding sideview mirrors • Panoramic sunroof | <ul style="list-style-type: none"> • Advanced Forward Collision Avoidance Assist with Junction Turning Function² • Highway drive assist² • Safe exit assist² • Rear occupant alert² • Front and rear parking sensors² | <ul style="list-style-type: none"> • 10.25" multimedia interface with integrated navigation⁴ • Advanced smart cruise control (ASCC)² • 110V inverter | <ul style="list-style-type: none"> • Heated 2nd row seats • Integrated manual rear door sunshades • Express up/down front and rear windows • Obstacle-detecting front and rear windows • LED interior lighting |

SX - adds to or upgrades from EX+

| SAFETY | TECHNOLOGY | INTERIOR |
|---|---|---|
| <ul style="list-style-type: none"> • Parking collision avoidance assist — reverse² • Blind view monitor² • Around view monitor (AVM) | <ul style="list-style-type: none"> • Bose® premium audio system¹⁰ • Heads-up display (HUD) system • 12.3" Supervision LCD/TFT instrument cluster • Rain sensing wipers | <ul style="list-style-type: none"> • Leather seats • Driver's seat memory function • Air-cooled front seats • 4-way driver's seat lumbar support • Power driver's seat cushion extension • 2-way passenger seat lumbar support • Remote folding 2nd row • Deluxe interior trim |

Specifications

Mechanical

| | LX+, LX PREMIUM | X-LINE, EX, EX+, SX |
|------------------|------------------------|--|
| Engine type | 2.5L 4-cylinder GDI | 2.5L Turbo 4-cylinder GDI |
| Horsepower | 191 hp @ 6,100 rpm | 281 hp @ 5,800 rpm |
| Torque | 181 lb.ft. @ 4,000 rpm | 311 lb.ft. @ 1,700 - 4,000 rpm |
| Transmission | 8-speed automatic | 8-speed wet-type dual clutch automatic |
| Drive type | All-wheel drive (AWD) | All-wheel drive (AWD) |
| Recommended fuel | Regular unleaded | Regular unleaded |

Measurements

| | LX+, LX PREMIUM | X-LINE, EX, EX+, SX |
|---|-------------------------------------|-------------------------------------|
| Towing capacity ¹² | 1,653 lb - 2,000 lb | 1,653 lb - 3,500 lb |
| Fuel tank capacity | 67 L | 67 L |
| Cargo capacity (behind 1 st row) | 2,139 L (75.5 cu. ft.) | 2,139 L (75.5 cu. ft.) |
| Cargo capacity (behind 2 nd row) | 1,090 - 1,274 L (38.5 - 45 cu. ft.) | 1,090 - 1,274 L (38.5 - 45 cu. ft.) |
| Cargo capacity (behind 3 rd row) | 357 L (12.6 cu. ft.) | 357 L (12.6 cu. ft.) |

Fuel consumption

| | LX+, LX PREMIUM | X-LINE, EX, EX+, SX |
|--------------------------|-----------------|---------------------|
| City / Highway (L/100km) | 10.1 / 9.2 | 10.9 / 8.7 |

Please visit kia.ca for full vehicle specifications.

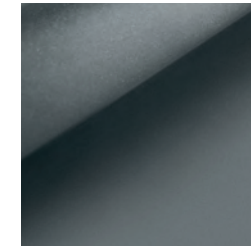
Exterior colours



Glacial White Pearl



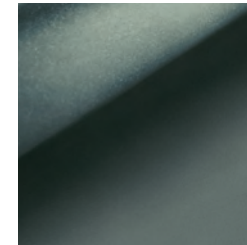
Wolf Grey



Gravity Grey



Ebony Black



Aruba Stone Green

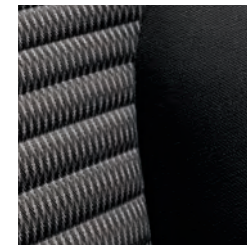


Pacific Blue



Runway Red

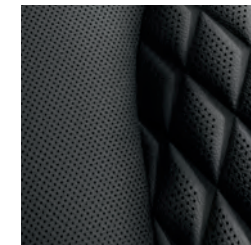
Interior colours



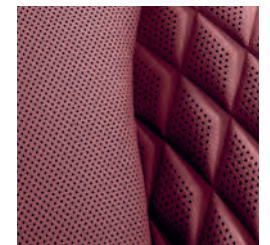
Black cloth



Black leather (synthetic)



Black leather



Burgundy leather

Some seating, paint and trim configurations may be limited. Visit kia.ca for full details.

Wheels



LX+
17" alloy wheels



LX Premium
18" machined-finish
alloy wheels



X-Line
20" machined-finish
grey alloy wheels



EX/EX+/SX
20" machined-finish
black alloy wheels

Kia Accessories

Built to fit right, work right and look great.



Cargo screen

Business suit hanger

Roof cargo box

Side steps

Accessory wheels



Available accessories may vary. Images shown for illustration purposes only. Items and selection may change. See Dealer for details

KIA Connect

A world of support services that enhance your security, comfort and confidence — every time you get behind the wheel.

Free for the first three years. Available feature. See features page or visit kia.ca for full details.



SiriusXM

With your new vehicle, enjoy access to SiriusXM® satellite radio from anywhere you go - while you're on the road, using the smartphone app, online, or even through your smart TV.

Free for the first 3 months. Available feature. See features page or visit kia.ca for full details.



We've got you covered¹³

Kia engineers are passionate about producing vehicles that are exceptionally well-designed and reliable. Their dedication to quality and attention to detail give Kia the confidence to back every model with an outstanding warranty program.



**5-year/
100,000 km**

Worry-free comprehensive warranty



**5-year/
100,000 km**

Limited powertrain warranty



**5-year/
unlimited km**

24-hour roadside assistance


The Kia 5-year/100,000-km warranty includes various warranties and roadside assistance. Some restrictions apply. For more information call us at 1-877-542-2886 or visit to kia.ca.

Endnotes

1. Available feature. See features page or visit kia.ca for full details. 2. None of the features we describe are intended to replace the driver's responsibility to exercise due care while driving and are not a substitute for safe driving practices. Some features may have technological limitations. For additional information regarding the various features, including their limitations and restrictions, please refer to your vehicle's Owner's Manual. 3. Compatible smartphone required. Data rates may apply, please check with your wireless service provider. For wireless charging, certain smartphones may require a wireless charging-compatible case. 4. When equipped with the navigation system, French voice commands may be limited. 5. Kia Connect only available on select models and trims. Specific functionality may vary between models and trims. Destination Search is only available on vehicles with a navigation head unit. Certain functions are only accessible on the smartphone app and/or customer web portal and/or in-vehicle head unit. Service is free for the first three years from the day the vehicle was first registered. Monthly subscription may be applicable after the free period. Please consult your dealer for details. 6. SiriusXM satellite radio service includes 3 month trial and is available in the 10 provinces and three territories of Canada, and the 48 contiguous states of the U.S. Monthly subscription sold separately after three trial months. 7. The Bluetooth word mark and logos are registered trademarks owned by Bluetooth SIG, Inc. 8. Apple, the Apple logo, CarPlay, and iPhone are trademarks of Apple Inc., registered in the US and other countries. App Store is a service mark of Apple Inc. 9. Google, Google Play, Google Maps, and Android Auto are trademarks of Google Inc. 10. BOSE is a trademark of Bose Corporation. 11. HomeLink is a registered trademark of Johnson Controls, Inc. 12. When properly equipped. Do not exceed any weight ratings and follow all towing instructions in your Owner's Manual. 13. The Kia 5-year/100,000-km warranty includes various warranties and roadside assistance. Some restrictions apply. For more information call us at 1-877-542-2886 or visit to kia.ca.

We make every effort to ensure that the product information in this brochure is accurate at the time of printing. Occasional changes in production, that affect the standard or optional equipment included on a specific model, may occur after printing which will not be reflected in this brochure. Kia Canada Inc. reserves the right to make these changes without notice or obligation. For this reason, please rely on kia.ca or your local Kia dealer for the very latest product information. Some vehicles shown may include optional equipment or may not be exactly as shown. Kia Canada Inc., by the publication and dissemination of this material, does not create any warranties, either expressed or implied, to any Kia products. Reproduction of the contents of this material without the expressed written approval of Kia Canada Inc. is prohibited. © Copyright 2022 Kia Canada Inc. Printed in Canada, November 2022.

 facebook.com/kiacanada

 twitter.com/kiacanada

 instagram.com/kiacanada

 youtube.com/kiacanada



Movement that inspires