

The 2023 Stinger



Movement that inspires

Boldly stand out.

Nimble, fast, luxurious and muscular. Stinger responds to your every command with both refinement and authority. Its 3.3-litre, twin turbocharged engine generates a breathtaking 368 horsepower, while standard all-wheel drive with dynamic torque vectoring control gives you maximum traction and control. You'll turn heads at every turn — in the 2023 Kia Stinger.





Blind view monitor¹ activates within the instrument panel when you turn on the blinker to change lanes, to display the blind spot in the direction of your turn signal.



Wireless charging³ keeps your smartphone charged while you're on the road.

Optimized for a higher level of control.

The Stinger boasts a wealth of high-tech driving, safety and entertainment features — like the standard 7" Supervision LCD/TFT instrument cluster and the available Heads-Up Display. All part of a cockpit design that's simple and classic, allowing the driver to focus on the road.



10.25" multimedia interface⁴ with integrated touch-screen navigation.

¹ Available feature. See features page or visit kia.ca for full details.



Personal space is paramount.

Sporty, yet spacious and uncluttered, and with available premium Nappa leather or leather with suede trim seating, Stinger's cabin will indulge you with comfort and confidence.



Dual-zone automatic climate control



Heated and air-cooled front seats



Full-width power sunroof

For those who want it all.

The thrill of a pure-bred performance sports sedan. The comfort, versatility and convenience of a luxury touring sedan. Stinger has everything for people who want it all.



Smart hatch

can automatically open when it senses your Smart Key.

60/40 split-folding rear seats

can fold down to provide up to 1,158 litres (40.9 cu. ft.) of cargo space.

Hidden under-floor storage

lets you conceal smaller valuables to maintain privacy.



Help in a heartbeat.

Using the latest sensing and processing technology the Stinger helps you stay aware of your position on the road, and can even step in and prevent collisions.



Advanced forward collision avoidance assist with junction turning function²

is designed to alert you of a potential collision with a vehicle or pedestrian, and can apply the brakes to reduce or avoid impact in a number of scenarios including when you are making a left turn at an intersection.

Lane follow assist²

is designed to detect the white lines on the road and keep you in the centre of your lane while maintaining a safe distance from the vehicle ahead.

Blind spot collision avoidance assist²

uses radar to detect vehicles in your blind spot and can give visual and audible alerts to help you avoid hazardous lane changes. It will also correct the steering to prevent you from changing lanes when it's unsafe.

Features

GT LIMITED

EXTERIOR

- 19" machined-finish alloy wheels
- Michelin performance tires
- Temporary spare tire
- Automatic headlights
- Dual-function LED headlights
- LED daytime running lights
- LED positioning lights
- LED taillights (bar type)
- Headlight escort function
- Welcome lighting system
- Aeroblade wipers
- Rain sensing wipers
- Solar glass
- Dark chrome sideview mirrors
- Heated sideview mirrors
- Sideview mirror signal repeaters
- Power folding sideview mirrors
- Auto-dimming sideview mirrors
- Sound-reducing front side door glass
- Full-width power sunroof
- Body coloured door handles
- Dark chrome exterior accents
- Integrated dual exhaust

SAFETY

- All-wheel drive (AWD)
- 7 airbags (driver knee, dual advanced front, dual side curtain, dual front side seat)
- Electronic stability control (ESC)
- 4-wheel anti-lock braking system (ABS)
- Hill-assist control (HAC)
- Blind spot collision avoidance assist²
- Rear cross traffic alert (RCTA)²
- Lane keeping assist system (LKAS)²
- Lane following assist (LFA)²
- Highway drive assist²
- Advanced Forward Collision Avoidance Assist with Junction Turning Function²
- Rearview camera²
- Rear parking sensors²
- Tire pressure monitoring system (TPMS)
- Immobilizer
- Low washer fluid warning indicator

TECHNOLOGY

- 10.25" multimedia interface with integrated navigation⁴
- 7" Supervision LCD/TFT instrument cluster
- 15-speaker Harman Kardon[®] premium audio system¹⁰
- AM/FM/MP3 radio
- SiriusXM[®] satellite radio⁵
- AUX audio input port
- USB audio input and charging port
- Bluetooth[®] hands-free cell phone connectivity^{3,7}
- Apple CarPlay[®] and Android Auto[™] smartphone integration^{3,8,9}
- Wireless phone charger³
- Dual 12V cabin power outlets
- Steering wheel-mounted audio controls
- Steering wheel mounted paddle shifters
- Advanced smart cruise control (ASCC)²
- Shift-by-wire transmission control
- Electronic parking brake
- Drive Mode Select (Eco/Comfort/Smart/Sport/Custom)
- Smart key with push-button start
- Kia Connect^{3,5}
- Auto-dimming rearview mirror with HomeLink[®] and compass¹¹
- Trip computer
- LED interior lighting
- Power door locks
- Smart power liftgate
- Electronic control suspension

INTERIOR

- Dual-zone automatic climate control
- Leather seats
- 12-way power adjustable driver's seat
- Driver's seat memory function
- 12-way power adjustable passenger seat
- Up/down/tilt headrests
- 60:40 split-folding rear seats
- Heated front seats
- Heated rear seats
- Heated steering wheel
- Air-cooled front seats
- Power tilt and telescopic steering wheel
- Express up/down front windows
- Obstacle-detecting front windows
- Sport steering wheel (D-shaped) with metal accent
- Leather and chrome wrapped gear shift knob
- Stainless steel sport pedals
- Stainless steel door scuff plates
- Sunglasses holder
- Illuminated vanity mirrors
- Illuminated glove box

GT ELITE - adds to or upgrades from GT Limited

EXTERIOR

- Dynamic directionally adaptive LED headlights

SAFETY

- 360° camera monitoring system²
- Blind view monitor²

TECHNOLOGY

- Limited-slip differential
- Heads-up display (HUD)

INTERIOR

- Premium Nappa leather seats
- 4-way driver's seat lumbar support (air cell)
- Power adjustable driver's seat bolsters
- Power driver's seat cushion extension
- Express up/down rear windows
- Obstacle-detecting front and rear windows
- Premium black headliner material

GT ELITE — SUEDE PACKAGE - adds to or upgrades from GT Elite

INTERIOR

- Suede seat inserts
- Suede dashboard trim
- Red accent stitching
- Red seatbelts

Specifications

Mechanical

Engine type	3.3L twin-turbocharged GDI V6
Horsepower	368 hp @ 6,000 rpm
Torque	376 lb.ft. @ 1,300-4,500 rpm
Transmission	8-speed Sportmatic automatic
Drive type	All-wheel drive (AWD)
Recommended fuel	Premium unleaded
Brakes: front/rear	350mm (13.8 in) vented discs (Brembo® brakes)/ 340mm (13.4 in) vented discs (Brembo® brakes)

Measurements

Fuel tank capacity	60 L
Cargo capacity, rear seats up / rear seats folded	660/1,158 L (23.3/40.9 cu. ft.)

Fuel consumption

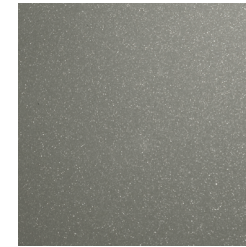
City	13.7 L/100km
Highway	9.6 L/100km

Please visit kia.ca for full vehicle specifications.

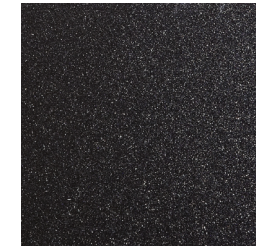
Exterior colours



Snow White Pearl



Ghost Grey



Thunder Grey

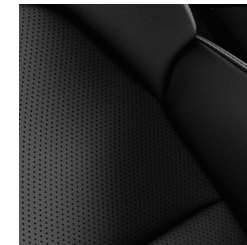


California Red



Aurora Black

Interior colours



GT Limited
Black leather



GT Elite
Black Nappa leather



GT Elite
Red Nappa leather*



GT Elite
Suede Package

*Not available with California Red exterior.

Wheels



19" machined-finish
alloy wheels

Kia Accessories

Built to fit right, work right and look great.



All-weather floor mats

Suit hanger

Rear bumper protector

Cargo liner

Accessory wheels

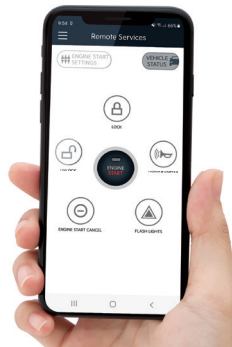


Available accessories may vary. Images shown for illustration purposes only. Items and selection may change. See Dealer for details

KIA Connect

A world of support services that enhance your security, comfort and confidence — every time you get behind the wheel.

Free for the first three years. See features page or visit kia.ca for full details.



SiriusXM

With your new vehicle, enjoy access to SiriusXM® satellite radio from anywhere you go - while you're on the road, using the smartphone app, online, or even through your smart TV.

Free for the first 3 months. See features page or visit kia.ca for full details.



We've got you covered¹²

Kia engineers are passionate about producing vehicles that are exceptionally well-designed and reliable. Their dedication to quality and attention to detail give Kia the confidence to back every model with an outstanding warranty program.



**5-year/
100,000 km**

Worry-free comprehensive warranty



**5-year/
100,000 km**

Limited powertrain warranty



**5-year/
unlimited km**

24-hour roadside assistance


The Kia 5-year/100,000-km warranty includes various warranties and roadside assistance. Some restrictions apply. For more information call us at 1-877-542-2886 or visit to kia.ca.

Endnotes

1. Available feature. See features page or visit kia.ca for full details. 2. None of the features we describe are intended to replace the driver's responsibility to exercise due care while driving and are not a substitute for safe driving practices. Some features may have technological limitations. For additional information regarding the various features, including their limitations and restrictions, please refer to your vehicle's Owner's Manual. 3. Compatible smartphone required. Data rates may apply, please check with your wireless service provider. For wireless charging, certain smartphones may require a wireless charging-compatible case. 4. When equipped with the navigation system, French voice commands may be limited. 5. Kia Connect only available on select models and trims. Specific functionality may vary between models and trims. Destination Search is only available on vehicles with a navigation head unit. Certain functions are only accessible on the smartphone app and/or customer web portal and/or in-vehicle head unit. Service is free for the first three years from the day the vehicle was first registered. Monthly subscription may be applicable after the free period. Please consult your dealer for details. 6. SiriusXM satellite radio service includes 3 month trial and is available in the 10 provinces and three territories of Canada, and the 48 contiguous states of the U.S. Monthly subscription sold separately after three trial months. 7. The Bluetooth word mark and logos are registered trademarks owned by Bluetooth SIG, Inc. 8. Apple, the Apple logo, CarPlay, and iPhone are trademarks of Apple Inc., registered in the US and other countries. App Store is a service mark of Apple Inc. 9. Google, Google Play, Google Maps, and Android Auto are trademarks of Google Inc. 10. Harman Kardon is a registered trademark of Harman International Industries, Inc. All rights reserved. 11. HomeLink is a registered trademark of Johnson Controls, Inc. 12. The Kia 5-year/100,000-km warranty includes various warranties and roadside assistance. Some restrictions apply. For more information call us at 1-877-542-2886 or visit to kia.ca.

We make every effort to ensure that the product information in this brochure is accurate at the time of printing. Occasional changes in production, that affect the standard or optional equipment included on a specific model, may occur after printing which will not be reflected in this brochure. Kia Canada Inc. reserves the right to make these changes without notice or obligation. For this reason, please rely on kia.ca or your local Kia dealer for the very latest product information. Some vehicles shown may include optional equipment or may not be exactly as shown. Kia Canada Inc., by the publication and dissemination of this material, does not create any warranties, either expressed or implied, to any Kia products. Reproduction of the contents of this material without the expressed written approval of Kia Canada Inc. is prohibited. © Copyright 2022 Kia Canada Inc. Printed in Canada, May 2022.

 facebook.com/kiacanada

 twitter.com/kiacanada

 instagram.com/kiacanada

 youtube.com/kiacanada



Movement that inspires