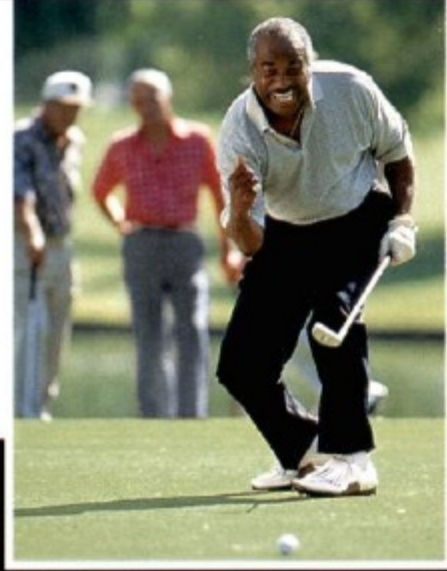




1 9 9 7

CROWN VICTORIA





CROWN VICTORIA: WHERE TRADITION IS STILL HONORED



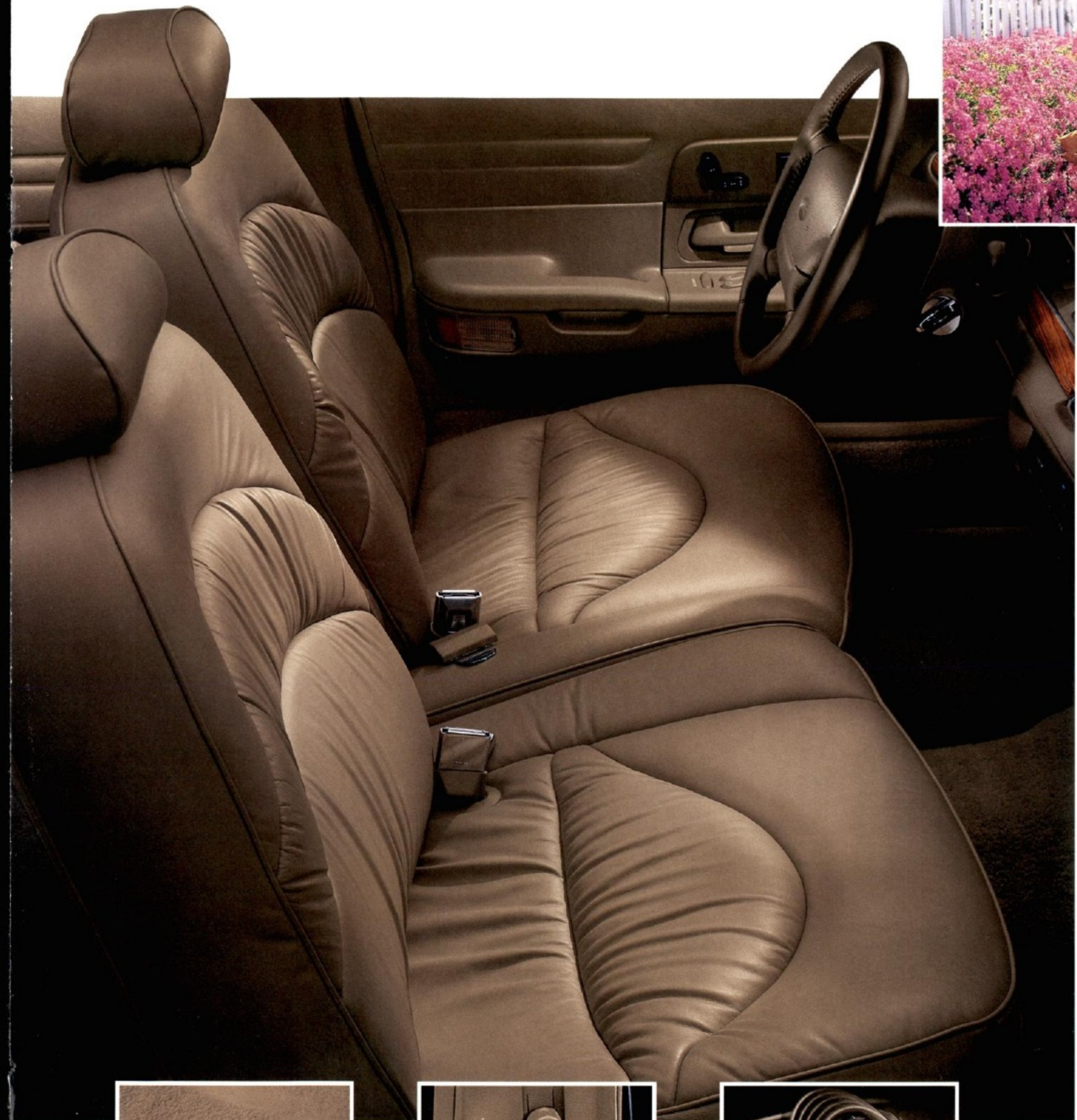
Few cars on the road today can match Crown Victoria's traditional large-car advantages like smooth V8 power. There's not only ample space, but full 6-passenger accommodations with room to spare. Not only a pleasant ride, but one that can only be described as remarkably refined.



Above: Crown Victoria LX in Toreador Red Clearcoat Metallic with Preferred Equipment Package 114A.

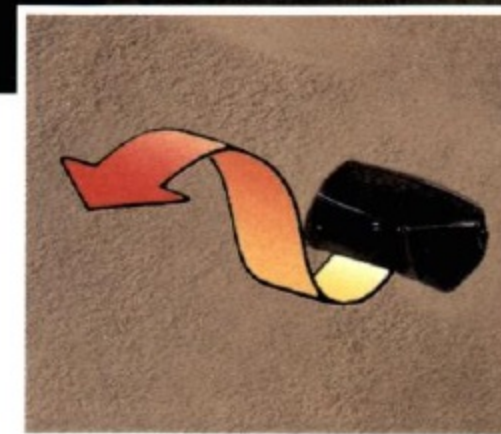
Left: Crown Victoria LX in Light Prairie Tan Clearcoat Metallic with Preferred Equipment Package 113A.

LEGENDARY ROOM AND COMFORT



The spacious 20.6-cubic-foot deep-well trunk is among the largest in its class and has a low lift-over height for loading convenience.

The Crown Victoria LX interior is seen here with Preferred Equipment Package 114A and optional leather seating surfaces in Prairie Tan.



Crown Victoria's rear passengers enjoy their own heat ducts.



Front shoulder belts are adjustable for enhanced comfort.



A tilt wheel is one in a long list of standard features.

THE LOOK OF CLASSIC STYLE



Electronic instrumentation is included in Preferred Equipment Package 114A.

Crown Victoria's classically styled, user-friendly instrument panel in Prairie Tan. Some equipment shown is optional.



Power door locks are included in all Crown Victoria packages.



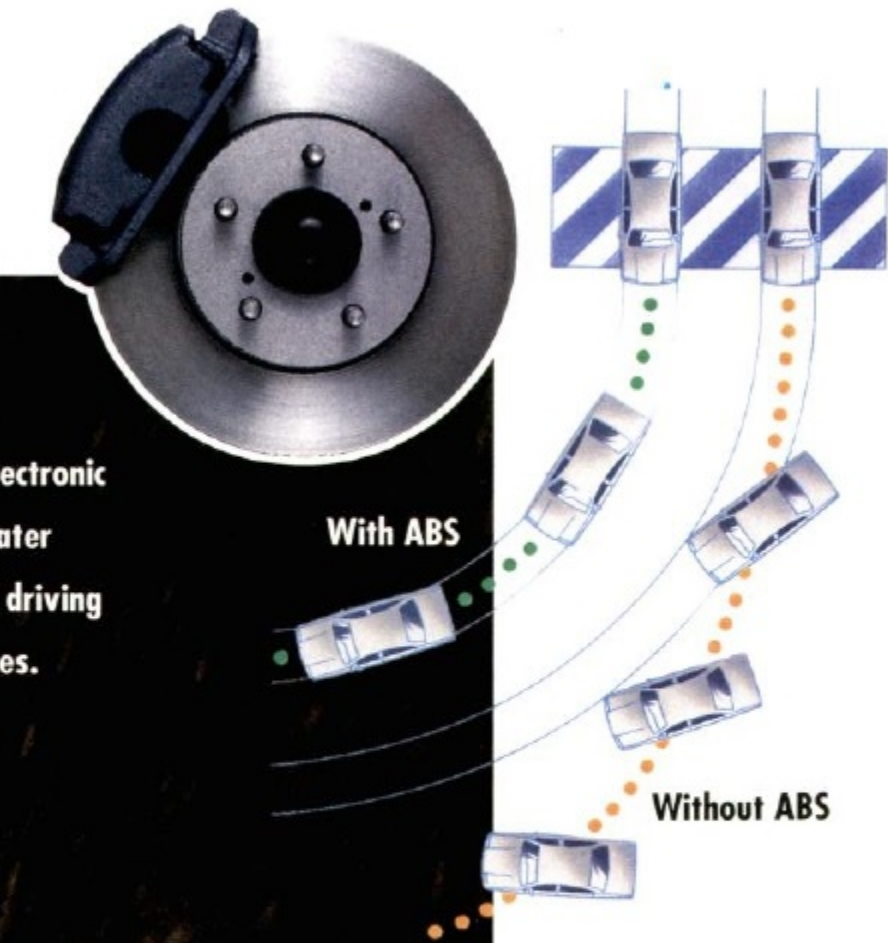
Integrated cup holders are standard on all models.



Electronic temperature control is included in LX Preferred Equipment Package 114A.

BIG ON PERFORMANCE, STRONG ON

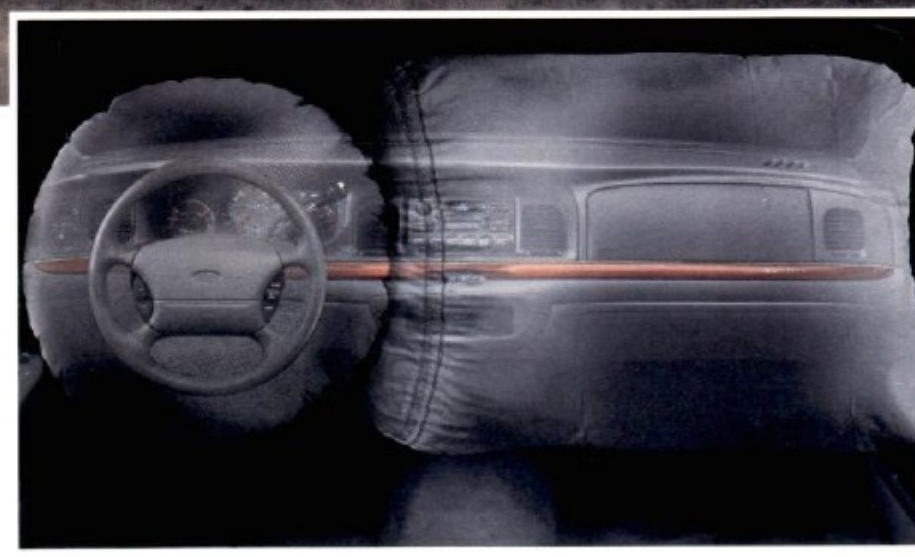
SAFETY



The sure-footed stopping ability of 4-wheel disc brakes is standard. An anti-lock braking system (ABS) with Electronic Traction Assist is optional. It provides greater steering control while braking under most driving conditions, even on wet or slippery surfaces.



For added security and convenience, Crown Victoria offers the optional remote keyless entry system.



Supplemental air bags for the driver and right-front passenger are standard (always wear safety belts).



Dual exhausts and a 210-horsepower engine are included in the optional handling and performance package.

Governed by the sophisticated EEC-V engine control computer, Crown Victoria is powered by an advanced V8 engine. The scheduled tune-up interval is a full 100,000 miles (under normal driving conditions with routine fluid/filter changes).



PREFERRED EQUIPMENT PACKAGES



CROWN VICTORIA LX 114A

- All items in 113A • Electronic temperature control air conditioning
 - Anti-lock brakes with Electronic Traction Assist
 - High-level audio system • Electronic instrumentation
 - Electronic automatic dimming rearview mirror
- Remote keyless entry system • Dual 6-way power seats



CROWN VICTORIA LX 113A

- All items in 111A
- Electronic AM/FM stereo cassette • Light/Decor Group
 - Leather-wrapped steering wheel • 12-spoke cast aluminum wheels • Cornering lamps



CROWN VICTORIA 111A

- Power door locks • Speed control
- Illuminated entry system • Spare tire cover
- Front and rear color-keyed, carpeted floor mats
- Radial-spoke locking wheel covers



Left to right: deluxe wheel covers (standard); locking radial-spoke wheel covers (included in package 111A); optional cast aluminum wheels; 12-spoke cast aluminum wheels (included in LX packages); and 16" cast aluminum wheels (included in handling and performance package).

EXTERIOR FEATURES

	LX 111A	LX 113A	LX 114A
Full solar tinted glass	S	S	S
Dual electric remote-control mirrors	S	S	S
Clearcoat paint (anti-chip primer in selected areas)	S	S	S
Deluxe wheel covers	S	S	S
Cast aluminum wheels	-	O	O
White sidewall tires	O	O	O

SAFETY AND SECURITY

Driver and right-front passenger supplemental air bags	S	S	S
Child safety locks on rear doors	S	S	S
Brake shift interlock that prevents shifting out of the "P" (Park) position until the brake pedal is depressed	S	S	S
Remote keyless entry system (includes two controllers)	-	O	P

SEATING

Reclining cloth split bench seats with dual center fold-down armrests and a full 10" seat track travel	S	-	-
Luxury cloth upholstery with 6-way power driver's seat (10" travel), and driver power lumbar adjustment	-	S	S
Rear bench with fold-down center armrest	-	S	S
6-way power driver's seat	O	S	S
6-way power driver and passenger seats (with power recliners and power driver lumbar support)	-	O	P
Leather seating surfaces (with driver and front passenger power recliners and lumbar support for driver)	-	O	O

COMFORT AND CONVENIENCE

CFC-free air conditioning	S	S	S
CFC-free air conditioning with electronic temperature control	-	O	P
Tilt steering wheel and interval windshield wipers	S	S	S
Power windows with "express-down" for driver	S	S	S
Autolamp system	S	S	S
Rear window defroster (includes hidden antenna)	S	S	S
Light/Decor Group: illuminated visor vanity mirrors; dual beam dome/map light; dual bodyside paint stripes	O	P	P
Deep-well trunk with luxury trim	S	S	S
Luxury sound insulation package	S	S	S
Height-adjustable front shoulder safety belts	S	S	S

SOUND SYSTEMS

Electronic AM/FM stereo radio with four speakers	S	S	S
AM/FM stereo radio/cassette tape player	O	P	P
High-level audio system with six speakers, seek/scan and self-diagnostic capability	-	O	P

FUNCTIONAL

Stainless steel exhaust system	S	S	S
Battery saver	S	S	S
Anti-lock brake system with Electronic Traction Assist	O	O	P
Handling and performance package (includes rear air suspension)	O	O	O

P = Preferred Equipment Package Item
S = Standard
O = Optional

Note: Preferred Equipment Package contents subject to change.

COLORS



Light Prairie Tan Clearcoat Metallic



Vermont Green Clearcoat Metallic



Toreador Red Clearcoat Metallic



Ivory Clearcoat



Light Denim Blue Clearcoat Metallic



Medium Wedgewood Blue Clearcoat Metallic



Deep Forest Green Clearcoat Metallic



Silver Frost Clearcoat Metallic



Black Clearcoat



Vibrant White Clearcoat

PAINT AND TRIM COLORS

Exterior Paint Colors	Interior Trim Colors				
	Slate Blue	Prairie Tan	Willow Green	Light Graphite	Oxford White/Light Graphite
Light Prairie Tan CC Met.		•			
Vermont Green CC Met.			•		
Toreador Red CC Met.		•			•
Ivory Clearcoat		•	•		
Light Denim Blue CC Met.	•			•	•
Medium Wedgewood Blue CC Met.	•			•	•
Deep Forest Green CC Met.		•	•	•	•
Silver Frost CC Met.	•			•	•
Black Clearcoat		•		•	•
Vibrant White Clearcoat	•	•	•	•	•

OWNERSHIP EXPERIENCE



ROADSIDE ASSISTANCE

Every new Ford includes the assurance of a 24-hour emergency Roadside Assistance Program provided during the 3-year/36,000-mile bumper-to-bumper warranty. Ask your dealer for complete details on this program which includes such services as fuel delivery, tire change, jump start, or even help when you're locked out of your car.

Ford Credit offers a wide variety of financing and leasing programs to qualified buyers which can be arranged right at the dealership. Ask your Ford Dealer for the facts on these programs.



Optional Ford Extended Service Plans go beyond the basic 3-year/36,000-mile warranty. Ask your dealer for complete details on the optional plans and for a copy of the limited warranty.



Using your Ford Citibank VISA® or MasterCard® could earn you hundreds, even thousands of dollars from Ford toward the purchase or lease of a new Ford, Lincoln or Mercury product. To apply or get more information, call 1-800-374-7777. Or visit a Ford or Lincoln-Mercury Dealer, or a branch of Citibank.

A RESPONSE TO THE NEED FOR A CLEANER ENVIRONMENT

All Ford vehicles are manufactured with a concern for environmental impact. An environmentally responsible natural-gas-powered Crown Victoria is also available. Your dealer has details.

DEALER-INSTALLED ACCESSORIES

Your Ford Dealer offers a variety of quality Ford-brand accessories that meet or exceed our strict specifications.

PRODUCT CHANGES AND OPTIONS AVAILABILITY

Following publication of the catalog, certain changes in standard equipment, options, prices and the like, or product delays, may have occurred which would not be included in these pages. Your Ford Dealer is your best source for up-to-date information. Ford Division reserves the right to change product specifications at any time without incurring obligations.

Options shown or described are available at extra cost and may be offered only in combination with other options or subject to additional ordering requirements or limitations.

For more information, visit our Web site at <http://www.ford.com>



BUILDING A COMPLETE LINE-UP OF QUALITY CARS AND TRUCKS



Aspire



Explorer



Escort



Windstar



Probe



Aerostar



Mustang



Club Wagon



Contour



Thunderbird



Econoline



Taurus



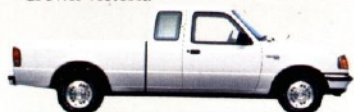
F-Series



Crown Victoria



Expedition



Ranger

