

2023

bZ4X





# Contents

CLICK BELOW TO  
NAVIGATE SECTIONS.

## Introduction



## Easy Charging



## Design



## Technology



## Performance



## Safety



## FWD: Specifications & Features

L



LE



## AWD: Specifications & Features

XLE



## Accessories



## Warranty



## Easy Shop







THE ALL-NEW, ALL-ELECTRIC TOYOTA bZ4X

# Electrifying the future of movement.



Meet the all-new, zero emissions, battery electric 2023 bZ4X that continues Toyota's more than 25 year legacy developing reliable electrified powertrains. This electric vehicle gets a NRCAN-estimated total driving range of up to 406 km when fully charged and under ideal conditions on FWD models.<sup>1</sup> It also features instant torque and available AWD off-road performance that you'd expect from a capable SUV. The striking two-tone design and upscale interior offers exceptional styling, while the long list of intuitive tech gives you the convenience, and connectivity you demand. With flexible and easy charging options and a battery that is back by an 8-year or 160,000 kilometres Electric Vehicle Battery Warranty, you have peace of mind with every drive. The all-new Toyota bZ4X – an all-electric vehicle for life on the go.

[Learn More](#)

bZ4X AWD XLE Technology Package Shown.



EASY CHARGING

# Built to go the distance.

Charging your bZ4X is incredibly simple thanks to three flexible charging options. And with the convenient Charge Management System, you can set a charging schedule that suits your specific daily routine while also taking advantage of off-peak electricity costs.

[Learn More](#)

Your bZ4X comes standard with a 120-volt level 1 charging cable so you're never too far from a charge.

## LEVEL 1

- Plugs into any common 120-volt AC wall outlet.
- A great pick for drivers with short commutes.
- You can go from Low Battery Light to 100% fully charged in about 50 hours, which averages up to six kilometres per hour.<sup>3</sup>

## LEVEL 2

- Dedicated charger that can be installed in your home by a licensed electrician that uses a 240-volt AC outlet.
- The best setup for faster charging at home.
- Chargers can be found at public charging stations nationwide.<sup>2</sup>
- You can go from Low Battery Light to 100% fully charged in about 11 hours, which averages up to 37 kilometres per hour.<sup>3</sup>

## LEVEL 3

- DC Fast Charging uses 480+ volts.
- Only available at public charging stations.<sup>3</sup>
- Under ideal conditions, you can charge from Low Battery Light to 80% in as quickly as 30 minutes (FWD) or 60 minutes (AWD) with charging that equates to approximately 9.5 kilometres per minute (FWD) and 5 kilometres per minute (AWD).<sup>4</sup>



## DESIGN

# Captivating style that gets noticed.

To say the bZ4X is striking is an understatement. The available two-tone colour exterior makes a bold statement, while its powerful SUV stance is emphasized by its distinctive sporty design, available 20-inch alloy wheels, and trapezoidal rear bumper. The premium interior sports available SoftTex® heated front seats, heated, leather-wrapped steering wheel and a Panoramic Moonroof that creates a sense of openness. And speaking of space, when the rear seats are folded flat, the expansive cargo area can fit 2 adult bikes. The front passenger seat<sup>5</sup> also reclines to accommodate long, upright items, while the convenient storage compartment under the centre console comes in handy for things like a tablet or purse.

[Learn More](#)







TECHNOLOGY

# Connectivity designed for you.

The bZ4X is loaded with intuitive features that work in perfect harmony with your busy lifestyle. The standard wireless Apple CarPlay<sup>®6</sup> and Android Auto<sup>™6</sup> connectivity links effortlessly to the Toyota Multimedia system<sup>6</sup> with available 12.3-inch display. Charging your smartphone is also quick and easy thanks to a Qi wireless charger,<sup>7</sup> while the 7-inch Multi-Informational Display lets you access critical information like driving range,<sup>8</sup> turn-by-turn navigation and more so that you can stay in-the-know on your drive.

[Learn More](#)





**BLIND SPOT MONITOR WITH REAR CROSS-TRAFFIC ALERT<sup>9</sup>**

The standard Blind Spot Monitor with Rear Cross-Traffic Alert warns you of vehicles that may not be visible in your blind spot when changing lanes or when backing out of a parking space.



**BIRD'S-EYE-VIEW-CAMERA<sup>10</sup>**

The available Bird's-Eye-View-Camera gives you a live, 360-degree view of your vehicle's surrounding area. This advanced feature helps you locate nearby objects, so you can park with more confidence than ever before.



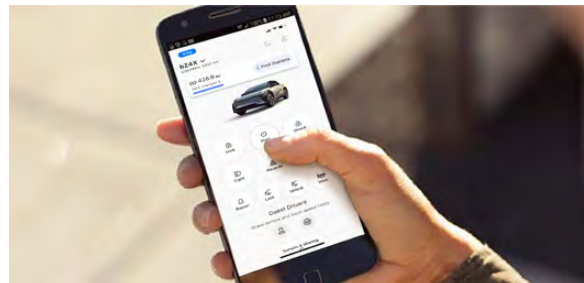
**HANDS-FREE POWER LIFTGATE**

When your hands are full, bZ4X senses your Smart Key fob and opens automatically when you wave your foot under the centre of the rear bumper.



**ON-BOARD VEHICLE CHARGER**

The bZ4X comes standard with a Level 1 Charging Cable so that you're always ready for a charge whether you're at home or on the go.



**TOYOTA APP CONNECTIVITY<sup>6</sup>**

Take advantage of what your smartphone can do for you. With Remote Connect, the Toyota app gives you the ability to manage and stay connected to your bZ4X from wherever you are. It features a host of functions from managing your battery's charge to programming your vehicle's climate settings for your next departure.



**DIGITAL KEY<sup>11</sup>**

With the available Digital Key, bZ4X can detect your Bluetooth® – connected smartphone to lock/unlock and start/stop your vehicle. You can even share your Digital Key with others through the Toyota App to give them the same access to your bZ4X when you're away.



PERFORMANCE

# Powered to take you places.



The bZ4X offers awe-inspiring performance without compromise. The electric powertrain boasts 201 hp (FWD models) and 214 hp (AWD model), responsive acceleration, and nimble steering. The bZ4X FWD gets an NRCAN-estimated total driving range of up to 406 km when fully charged and under ideal conditions, while the AWD models provide an NRCAN-estimated range of up to 367 km when fully charged and under ideal conditions.<sup>1</sup> The available AWD with X-Mode makes short work of tough terrain with its off-road handling and capability. For added traction, the available X-Mode with Grip Control includes enhanced driving modes to tackle difficult conditions like Dirt, Mud, and Snow to give you the confidence and added peace of mind no matter what type of road you're on.

[Learn More](#)

bZ4X AWD XLE Technology Package Shown.





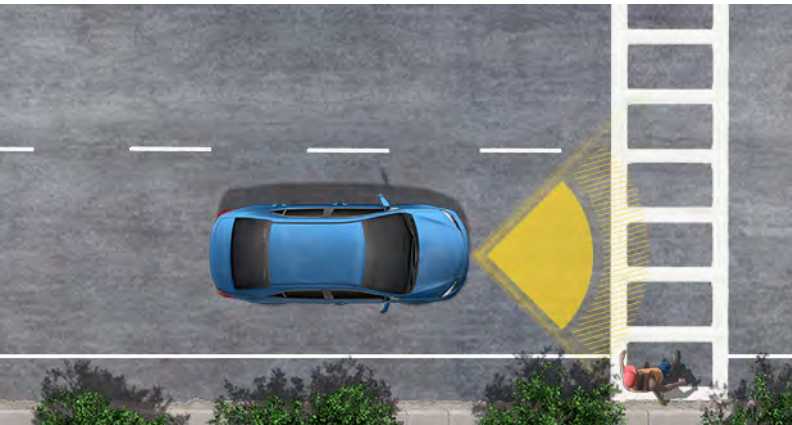
SAFETY

# Toyota Safety Sense™

Toyota  
Safety  
Sense

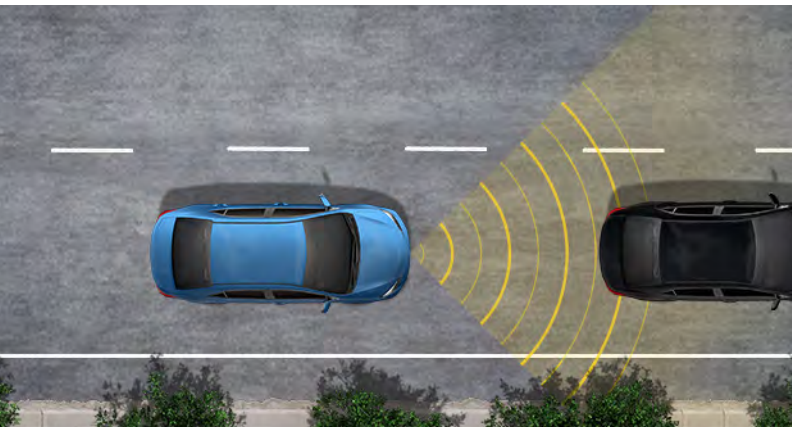
No matter what roads you travel, Toyota Safety Sense™<sup>12</sup> (TSS) 3.0 is always there to help keep you – and those around you – as safe as possible. Standard on the 2023 bZ4X, this advanced suite of innovative safety features is designed to provide warnings, automatic braking and steering to help protect drivers, passengers, pedestrians and people in other vehicles from harm.

[Learn More](#)



## PRE-COLLISION SYSTEM WITH FORWARD COLLISION WARNING<sup>13</sup>

This comprehensive system provides collision avoidance or collision mitigation support in speed ranges where frontal collisions are likely to occur. The latest system includes: **Front to Front Oncoming Vehicle Detection, Pedestrian and Bicycle Detection, Automatic Emergency Braking, Left Turn Oncoming Vehicle Detection/Braking, Right & Left Turn Oncoming Pedestrian Detection/Braking, Risk Avoidance Emergency Steer Assist and Front-Cross Traffic Alert.**

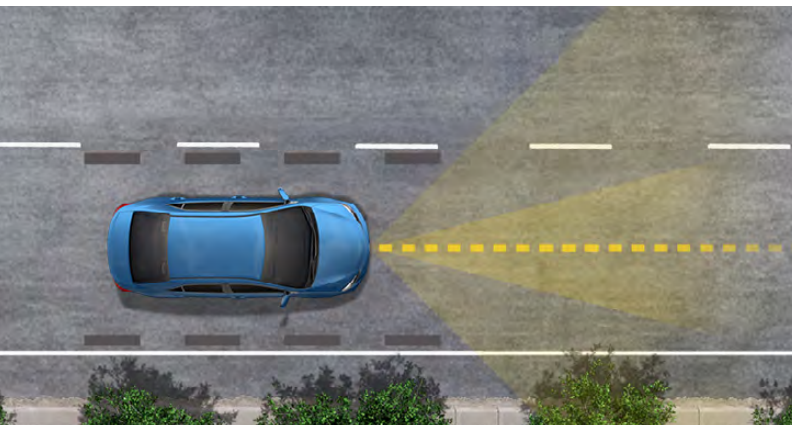


## FULL-SPEED RANGE DYNAMIC RADAR CRUISE CONTROL<sup>14</sup>

Dynamic Radar Cruise Control (DRCC) uses vehicle-to-vehicle distance control, which adjusts your speed, to help you maintain a preset distance from vehicles ahead of you that are driving at a slower speed. DRCC uses a front-grille-mounted radar and an in-vehicle camera designed to detect vehicles and their distance.

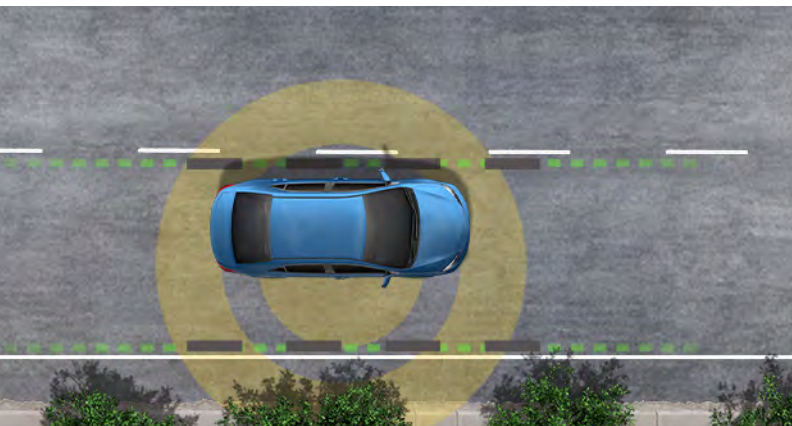


[Learn More](#)



### **LANE TRACING ASSIST<sup>15</sup>**

Provides steering support to help the driver keep the vehicle centred in its lane when Dynamic Radar Cruise Control is in operation.



### **LANE DEPARTURE ALERT WITH STEERING ASSIST<sup>16</sup>**

It alerts you if you start to drift out of your lane when visible lane markings or the road edge is detected. The Steering Assist function may also provide small corrective steering inputs.



### **AUTOMATIC HIGH BEAMS<sup>17</sup>**

Designed to detect oncoming and preceding vehicles' lights and depending upon the circumstances, Automatic High Beams can switch between high and low beams for you.





# L FWD

## EXTERIOR COLOURS<sup>18</sup>



## DRIVETRAIN

- Electric Vehicle: Permanent Magnet Synchronous Motor, 150 kW Motor Max Output
- Front Wheel Drive
- Single Speed Transmission
- Lithium Ion Battery
- Level 1 Charging Cable & Level 2/3 Charging Connector
- NRCan-Estimated Total Driving Range of Up To 406 km When Fully Charged & Under Ideal Conditions<sup>1</sup>
- Combined City & Hwy (L<sub>e</sub>/100 km): 2.0<sup>19</sup>

## ENTERTAINMENT & CONNECTIVITY

- Toyota Multimedia<sup>6</sup> – includes Service Connect<sup>20</sup> (Up to 10-Year Trial<sup>21</sup>), Safety Connect<sup>®</sup> (3-Year Trial). Available with Subscription: Drive Connect, Remote Connect
- 8" Touch Screen, 6-Speakers
- Wireless Apple CarPlay<sup>®6</sup> Compatibility
- Wireless Android Auto<sup>™6</sup> Compatibility
- USB Input/Charging Ports, Auxiliary Input Jack, Bluetooth<sup>®</sup>
- 7" TFT Multi-Information Display
- Backup Camera
- Smart Key System with Push Button Start



## INTERIOR

- Available Colour: Black Fabric
- Power 6-Way Adjustable Front Seats

## EXTERIOR

- Available Colour: Black (202)
- Heated Power Side Mirrors
- LED Daytime Running Lights
- 18" Aluminum Alloy Wheels & P225/60R18 All-Season Tires

## SAFETY

- Toyota Safety Sense<sup>™</sup> 3.0<sup>12</sup> – Pre-Collision System with Forward Collision Warning, Full-Speed Range Dynamic Radar Cruise Control, Lane Tracing Assist, Lane Departure Alert with Steering Assist, Automatic High Beam
- Star Safety System<sup>™</sup>
- 8 Airbags

Build & Price

Compare Models





# LE FWD

## EXTERIOR COLOURS<sup>18</sup>



## ADDS TO OR REPLACES FEATURES OFFERED ON L FWD

### ENTERTAINMENT & CONNECTIVITY

- Toyota Multimedia<sup>6</sup> – includes Remote Connect (3-Year Trial). Available with Subscription: Drive Connect
- 12.3" Touch Screen

### INTERIOR

- Available Colour: Black Fabric
- Heated Front Seats & Radiated Heaters
- Leather-Wrapped Heated Steering Wheel

### EXTERIOR

- Available Colours: Wind Chill Pearl (089), Element Silver (1J6), Black (202), Nautical Blue Metallic (8S6)
- Power Back Door
- Heated Power Side Mirrors with Foot Light
- Rain & Moisture Sensing Wipers

### SAFETY

- Blind Spot Monitor with Rear Cross-Traffic Alert<sup>9</sup>
- Safe Exit Assist

[Build & Price](#)

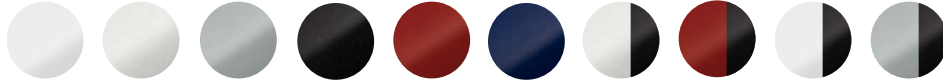
[Compare Models](#)





# XLE AWD

## EXTERIOR COLOURS<sup>18</sup>



## DRIVETRAIN

- Electric Vehicle: Permanent Magnet Synchronous Motor, 80 kW + 80 kW Motor Max Output
- Electronic On-Demand All-Wheel Drive with intelligence with X-Mode
- Drive Mode Select – 3 Modes
- Lithium Ion Battery
- Single Speed Transmission
- Level 1 Charging Cable & Level 2/3 Charging Connector
- NRCAN-Estimated Total Driving Range of Up To 367 km When Fully Charged & Under Ideal Conditions<sup>1</sup>
- Combined City & Hwy (L<sub>e</sub>/100 km): 2.3<sup>19</sup>

## ENTERTAINMENT & CONNECTIVITY

- Toyota Multimedia<sup>6</sup> – includes Remote Connect (3-Year Trial), Safety Connect<sup>®</sup> (3-Year Trial), Service Connect<sup>20</sup> (Up to 10-Year Trial<sup>21</sup>). Available with Subscription: Drive Connect
- 12.3" Touch Screen, 6-Speakers
- Wireless Apple CarPlay<sup>®6</sup> Compatibility
- Wireless Android Auto<sup>TM6</sup> Compatibility
- 7" TFT Multi-Information Display
- Qi Wireless Charging<sup>7</sup>
- Smart Key System with Push Button Start

## INTERIOR

- Available Colour: Black Mixed Fabric/SoftTex<sup>®</sup>
- Auto-Dimming Rear View Mirror with HomeLink<sup>®</sup>
- Tonneau Cover

## EXTERIOR

- Available Colours: Wind Chill Pearl (089), Element Silver (1J6), Heavy Metal (1L5), Black (202), Supersonic Red (3U5), Nautical Blue Metallic (8S6), Element Silver with Black Roof (2MR), Wind Chill Pearl with Black Roof (2VP), Heavy Metal with Black Roof (2WC)
- Panoramic Moonroof with Sunshade

## SAFETY

- Toyota Safety Sense<sup>TM</sup> 3.0<sup>12</sup> – Pre-Collision System with Forward Collision Warning, Full-Speed Range Dynamic Radar Cruise Control, Lane Tracing Assist, Lane Departure Alert with Steering Assist, Automatic High Beam
- Star Safety System<sup>TM</sup>
- 8 Airbags
- Downhill Assist Control, Crawl Control, Multi-Terrain Select
- Intelligent Clearance Sonar with Rear Cross Traffic Brake

## OPTIONAL

### XLE TECHNOLOGY PACKAGE

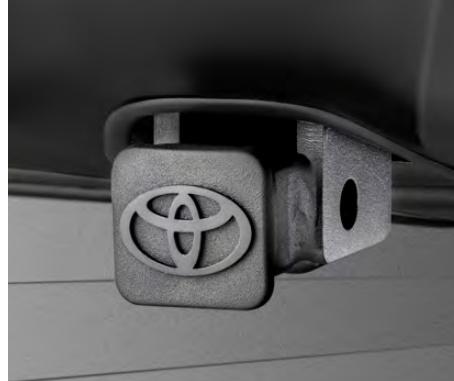
- Available Colours: Wind Chill Pearl (089), Element Silver (1J6), Heavy Metal (1L5), Black (202), Supersonic Red (3U5), Nautical Blue Metallic (8S6), Element Silver with Black Roof (2MR), Wind Chill Pearl with Black Roof (2VP), Supersonic Red with Black Roof (2TB), Heavy Metal with Black Roof (2WC)
- Interior Colours: Black SoftTex<sup>®</sup>, Light Grey SoftTex<sup>®</sup>
- Toyota Multimedia<sup>6</sup> – adds Drive Connect (3-Year Trial)
- 9-Speakers, JBL<sup>®</sup> Clari-Fi<sup>TM</sup> Audio Systems
- Bird's-Eye-View-Camera<sup>10</sup>
- Power 8-Way Adjustable Driver Seat with 2-Way Adjustable Lumbar Support
- Front Ventilated Seats<sup>5</sup>
- Illuminated Entry
- Kick Sensor Power Back Door
- Rear Spoiler, Roof Rails
- Advanced Park
- Digital Key<sup>11</sup>
- 20" Multi-Spoke, Machine-Finished Alloy Wheels with Grey Accents & P225/60R18 All-Season Tires

Build & Price

Compare Models



Toyota Genuine Accessories are custom designed and engineered to fit your specific Toyota vehicle and are backed by a Toyota Warranty.



- Activity Mount
- Auto-Dimming Rear View Mirror with HomeLink®
- Body Side Mouldings
- Cargo Liner
- Cargo Net
- Hood Deflector
- Illuminated Door Sill
- Pro Series Paint Protection Film – Door Cup
- Pro Series Paint Protection Film – Door Edge
- Pro Series Paint Protection Film – Hood
- Roof Rack - Cross Bars
- Side Window Deflectors
- Toyota Genuine Dash Camera
- Universal Tablet Holder

[Learn More](#)





Every Toyota Car, Truck, and SUV is built to exceptional standards. And that's not idle boasting. We back it up with these Limited Warranty Coverages:

[Learn More](#)

**BASIC**  
36 months/60,000 km whichever comes first (all components that are defective in material or workmanship excluding normal wear and maintenance items).

**36 MONTHS**  
OR  
**60,000 km**

**ELECTRIC VEHICLE BATTERY**  
BEV battery is covered for 96 months/160,000 km, whichever comes first. Warranty coverage is subject to terms and conditions.

**96 MONTHS**  
OR  
**160,000 km**

**POWERTRAIN**  
60 months/100,000 km, whichever comes first (engine, transmission/transaxle, drive system, seatbelts, and airbags).

**60 MONTHS**  
OR  
**100,000 km**

**BEV SPECIFIC COMPONENTS WARRANTY**  
BEV specific components, including the transaxle, and inverter with converter, are covered for 96 months/160,000 km.

**96 MONTHS**  
OR  
**160,000 km**

**CORROSION PERFORATION**  
60 months/unlimited km (corrosion perforation of sheet metal).

**60 MONTHS**  
OR  
**UNLIMITED km**

**ELECTRIC VEHICLE BATTERY CAPACITY WARRANTY**  
BEV battery is covered for 96 months/160,000 km, whichever comes first. Battery Capacity Warranty coverage is applied to battery capacity below 70% of original capacity.

**96 MONTHS**  
OR  
**160,000 km**

**EMISSIONS**  
Coverages vary under federal and provincial regulations.

# Simple, safe, and convenient ways to shop for your new Toyota.

## Visit a dealership

When you're ready to test drive a Toyota, contact a dealership near you for help.

[Find a Dealer](#)

## Find great incentives

Take advantage of Toyota incentives including cash, lease, and financing offers available at dealerships across Canada.

[Offers/Promotions](#)

## Get financing

Toyota Financial Services can help you get behind the wheel of a new Toyota faster with quick & easy online pre-approvals.

[Financial Services](#)







(1) NRCan-estimated 406 KM total driving range for FWD and 367 KM total driving range for AWD when vehicle is fully charged and operated under ideal driving conditions. Use for comparison purposes only. Actual range may decrease significantly depending on speed, outside temperature, accessory use, how/where you drive, charging habits, and other factors. Battery capacity also decreases with time and use which will reduce range. See [www.nrcan.gc.ca](http://www.nrcan.gc.ca) and Owner's Manual for details. (2) Public charging experience can vary based on charger level and other vehicle and environmental conditions. (3) Charging times are estimated based on ideal charging conditions. As temperatures decrease below 10 degrees Celsius, charging time will increase significantly. Drive battery level and condition, and charger specifications also can negatively affect charging time. Public charging experience can vary based on charger level and other vehicle and environmental conditions. (4) DC (Fast) Charging: DC charging times are estimated based on ideal charging conditions. As temperatures decrease below 10 degrees Celsius, charging time will increase significantly. For the bZ4X AWD model, charging may slow down more than other models in weather conditions below 0 degrees Celsius and may not be possible when the temperature drops to around -20 degrees Celsius and below. Drive battery level and condition, charger specifications and DC charging more than twice per day also can negatively affect charging time. (5) Do not allow passengers to sit in a seat that has been fully or severely reclined while driving. This feature is intended for use only when the vehicle is parked. While the vehicle is being driven, all vehicle occupants should have the seatback upright, sit well back in the seat and properly wear the seat belts provided. In the event of a collision, the more the seat is reclined, the greater the risk of death or personal injury. See Owner's Manual for additional limitations and details. (6) Driving while distracted can result in loss of vehicle control. Some features may be locked out while the vehicle is in gear. To reduce risk of accident while driving, exercise care when using the systems (even with the voice commands) and obey all local laws concerning use of the systems while driving (as some laws prohibit the use of electronic devices while operating a vehicle). Once the Connected Services by Toyota trial subscription expires, paid enrollment is required. Apple CarPlay, iPhone and Siri are trademarks of Apple Inc. Android Auto and Google Assistant are trademarks of Google LLC. A compatible customer phone pairing is required and customers are responsible for all data charges. (7) Qi wireless charging may not be compatible with all mobile phones, MP3/WMA players and like models. When using the wireless charging system avoid placing metal objects between the wireless charger and the mobile device when charging is active. Doing so may cause metal objects to become hot and could cause burns. (8) Vehicle's estimated range calculation is based on recent usage patterns and may not accurately predict actual vehicle range, especially if use conditions differ from those on which the calculation was based. (9) Do not rely exclusively on the Blind Spot Monitor System and Rear Cross-Traffic Alert System. They are not collision avoidance systems or substitutes for safe and attentive driving. (10) Cold weather and other environmental factors may limit system. Operates at low speed or when parked. Do not rely exclusively on the system as it is not intended to replace safe attentive operation of the vehicle. You should also look around outside your vehicle, over your shoulder and use your mirrors to confirm clearance. (11) Use only if aware of circumstances surrounding vehicle and it is legal and safe to do so. Toyota Digital Key depends on factors outside of Toyota's control, including an operative Bluetooth capable smart device, without which system functionality and availability may be limited or precluded. Service may vary by vehicle and region. Registration and Toyota app download required. Subscription required after trial. Terms of Use apply [www.toyota.ca/connectedservices-termsfuse](http://www.toyota.ca/connectedservices-termsfuse). Data charges may apply. Services subject to change at any time without notice. See usage precautions and service limitations in the Toyota Owner's Manual. To learn about Connected Services data collection, use, sharing and retention practices, see [www.toyota.ca/connectedservices-privacy](http://www.toyota.ca/connectedservices-privacy). (12) Drivers should always be responsible for their own safe driving. Please always pay attention to your surroundings and drive safely. Depending on the conditions of roads, vehicles, weather, etc., the TSS systems may not work as intended. (13) The TSS Pre-Collision System with Forward Collision Warning is designed to help avoid or reduce the impact speed and damage in certain frontal collisions only. It is not a substitute for safe and attentive driving. System effectiveness depends on many factors, such as speed, size and position of pedestrians, driver input and weather, light and road conditions. See Owner's Manual for additional limitations and details. (14) Dynamic Radar Cruise Control is designed to assist the driver and is not a collision-avoidance system or a substitute for safe and attentive driving practices. System effectiveness depends on many factors such as weather, traffic and road conditions. (15) Lane Tracing (Trace) Assist (LTA) is designed to read visible lane markers and detect other vehicles under certain conditions. When potential lane departure is detected, LTA provides a visual warning and either an audible alert or vibration in the steering wheel and can apply a slight steering force. It is not a collision-avoidance system or a substitute for safe and attentive driving. Effectiveness is dependent on many factors including road, weather and vehicle conditions. (16) Lane Departure Alert with Steering Assist is designed to read lane markers under certain conditions and provide visual and audible alerts and slight steering force when lane departure is detected. It is not a collision-avoidance system or a substitute for safe and attentive driving. (17) Automatic High Beam system operates at speeds above approximately 34 km/h. Factors such as a dirty windshield, variable weather, lighting conditions and hilly terrain will limit effectiveness, requiring the driver to manually turn it off. (18) Not all exterior and interior colour options are available for every model. (19) Fuel consumption for bZ4X is based on manufacturer's own testing using approved Government of Canada test methods. L<sub>e</sub>/100 km represents the electric equivalent of L/100 km. Your actual results will vary for many reasons including temperature, driving conditions, and how you drive and maintain your vehicle. (20) Services are dependent upon connection to a compatible 4G wireless network, provided by a third-party wireless service provider. Toyota is not responsible for 4G cellular network discontinuance and will not provide compensation for reduced service availability. (21) Services are dependent upon connection to a compatible wireless network, provided by a third-party wireless service provider. Toyota is not responsible for cellular network discontinuance and will not provide compensation for reduced service availability.

Details on the above features can be found in the Owner's Manual or through your local Toyota Dealer.

**Toyota Canada Inc.** Every effort has been made to ensure the specifications and equipment shown are accurate based on information available at time of publication. In some cases, certain changes in production capacity, standard equipment, options or product delays may occur which would not be reflected in this brochure. Toyota Canada Inc. reserves the right to make these changes without notice or obligation. The Toyota website [toyota.ca](http://toyota.ca) – or your Toyota Dealer is your best source for up-to-date information.



PROUD PARTNER