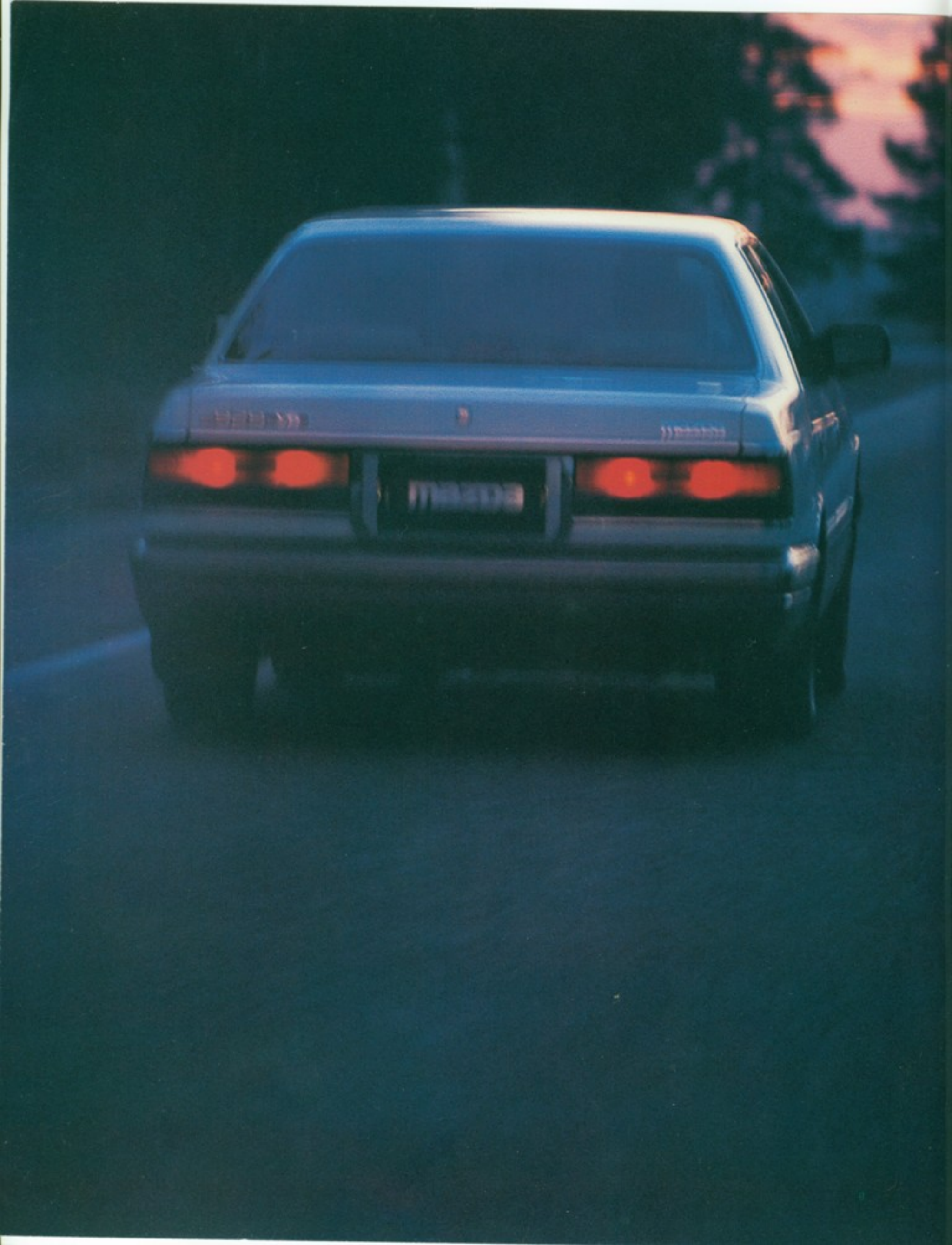


Mazda 929 V6i

Fuel injected, 3 litre, 18 valve.





The decision as to which high-performance luxury vehicle you should choose has just become significantly easier.

Very rarely does a vehicle meet totally-satisfying high-performance luxury vehicle goals. An automobile that through its sheer brilliance of design is an expression of the very finest of the automotive art.

Mercedes has the greatest pleasure in presenting to you such a job. The 2400 cc 161 hp injected 3 liter 24 valve Merkur 300 V8. It is not that Mercedes is at the highest principle of Mercedes' one basic automotive philosophy — dynamic quality. A philosophy that has seen Mercedes without compromise, three fundamental principles.

Firstly that an automobile must provide the driver and passengers with the ultimate in spacious driving comfort and stability at all speeds.

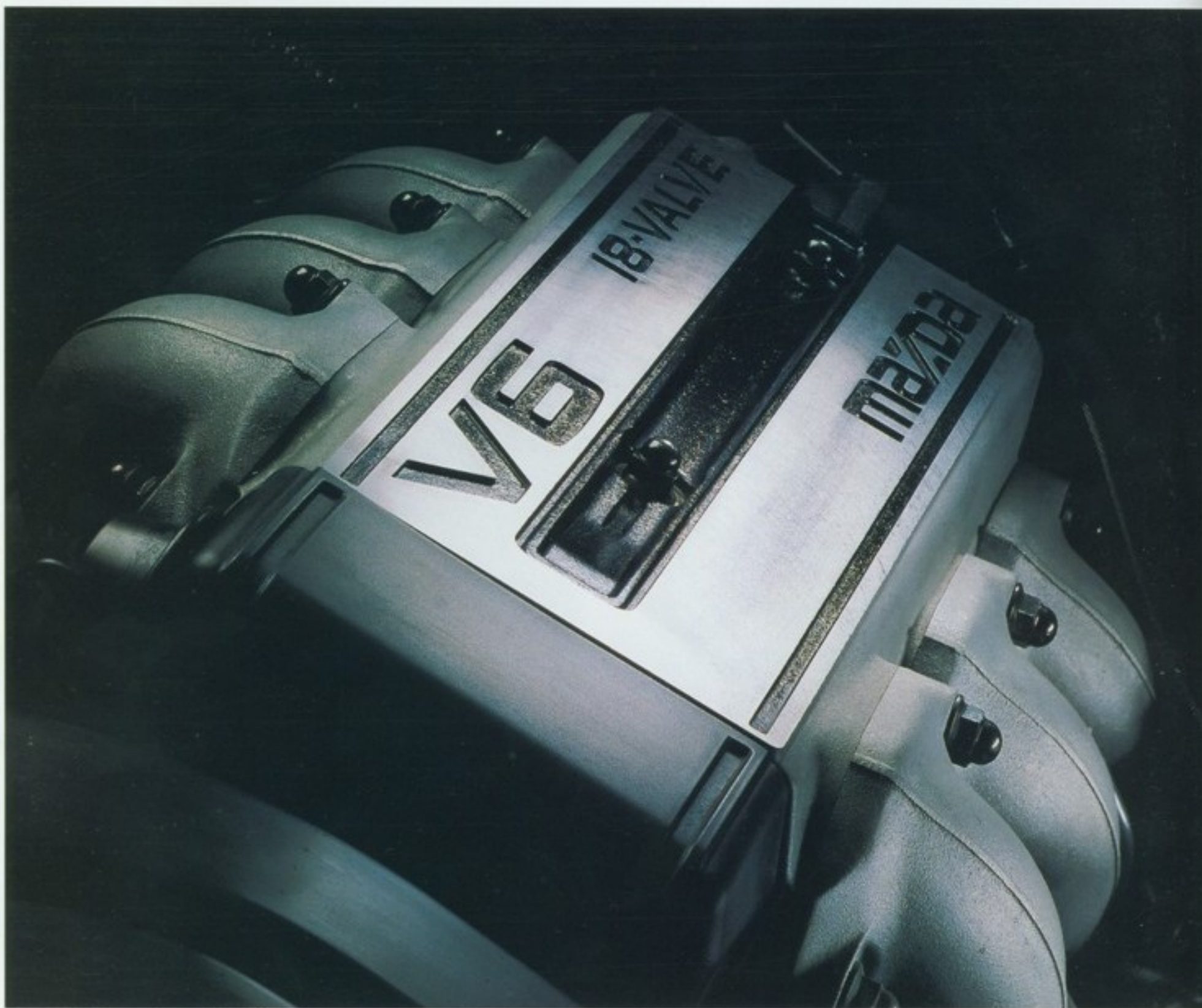
Secondly that an unsurpassed level of fuel-injected performance with fuel efficiency must be attained.

Finally that absolutely nothing should be overlooked in the creation of a stylish, spacious and luxurious high performance sedan.

Now the vehicle, all of these goals have been reached to produce a driving result. It would that you already own the latest engineering Merkur become a success in Europe and the United States.

From the moment you discover the all-new smooth and powerful fuel injected 24 engine, the unique 4-link suspension system and the luxury 3 center dash for total demanding drive, you'll discover that the new Merkur is not to be forgotten. It is a car that will give you the luxury you desire. Mercedes has always designed cars for the individual. The Merkur 300 is a multi-use, versatile, the unassuming and style of a truly individual automobile.

Like the other Mercedes passenger automobiles, the all new Merkur 300 comes with Mercedes' unique full-body-rolled, 3 year or 50,000 Mercedes warranty (whichever comes first) including complete body protection. What that means for you: a peace of mind and protection for longer than any other competitor. It is a warranty that can be considered with the car when you come to sell it, a feature which will help a most pleasing outcome. Mercedes on Mercedes' already impressive name value. It is simply another example of Mercedes' attention to detail and the confidence that Mercedes has in every single one of its cars. It is your assurance of quality.



The powerful new direction in engineering excellence.

Right from the moment this new vehicle was conceived, the need was seen for an all new powerful engine to power the largest of the Mazda fleet.

An engine designed to provide swift, silent and above all effortless power at all speeds.

An engine that would be uniquely compact, yet provide quietness and smoothness.

An engine to allow the same ease of driving whether passing on the highway, purring around city streets or towing a boat.

An engine compatible with a high performance luxury saloon.

The result of Mazda's painstaking efforts to design such an engine is truly a rare example of modern engineering ingenuity.

THE POWER OF THE V6i.

One drive will convince you that the all new, fuel injected, 3 litre 18 valve V6 engine is a blending of true high performance with absolute quietness and low vibration.

The new V6 JE engine has been provided with an advanced digital electronically managed L jetronic fuel injection system and resonance supercharging unique to the V6 configuration. It is an engine

capable of speeds around 200 kilometres per hour, and a towing capacity of over a tonne.

SILENCE IS GOLDEN.

Perhaps the most outstanding feature of this new V6 engine, is its silence at all speeds. Mazda has achieved this through full use of Finite Element Analysis and computer design techniques combined with development and testing aided by Dynamic Modal Analysis and Laser Holography. This enabled the Mazda engineers to achieve incredible results in location and removal of noise and vibration sources.

Other innovations include the cylinder banks which are inclined at 60 degrees to each other allowing the engine to be exceptionally compact and vibration free. Plus there is the marked improvement in even firing intervals, using aluminium cylinder heads and two intake valves with one exhaust valve per cylinder. Also there's Mazda's unique system of having valves opened and closed by rocker arms, which enclose one of the worlds smallest hydraulic lash adjusters for quiet and maintenance free operation. And of course there's the luxury of cruise control for your extra driving pleasure.

TRANSMISSION: AS SMOOTH AS SILK.

As part of this all new driving experience, you will discover an innovative, new 4 speed automatic transmission system. It is an electronically controlled system that is specifically designed for both relaxed or sporty driving and has been built especially to compliment the V6 engine.

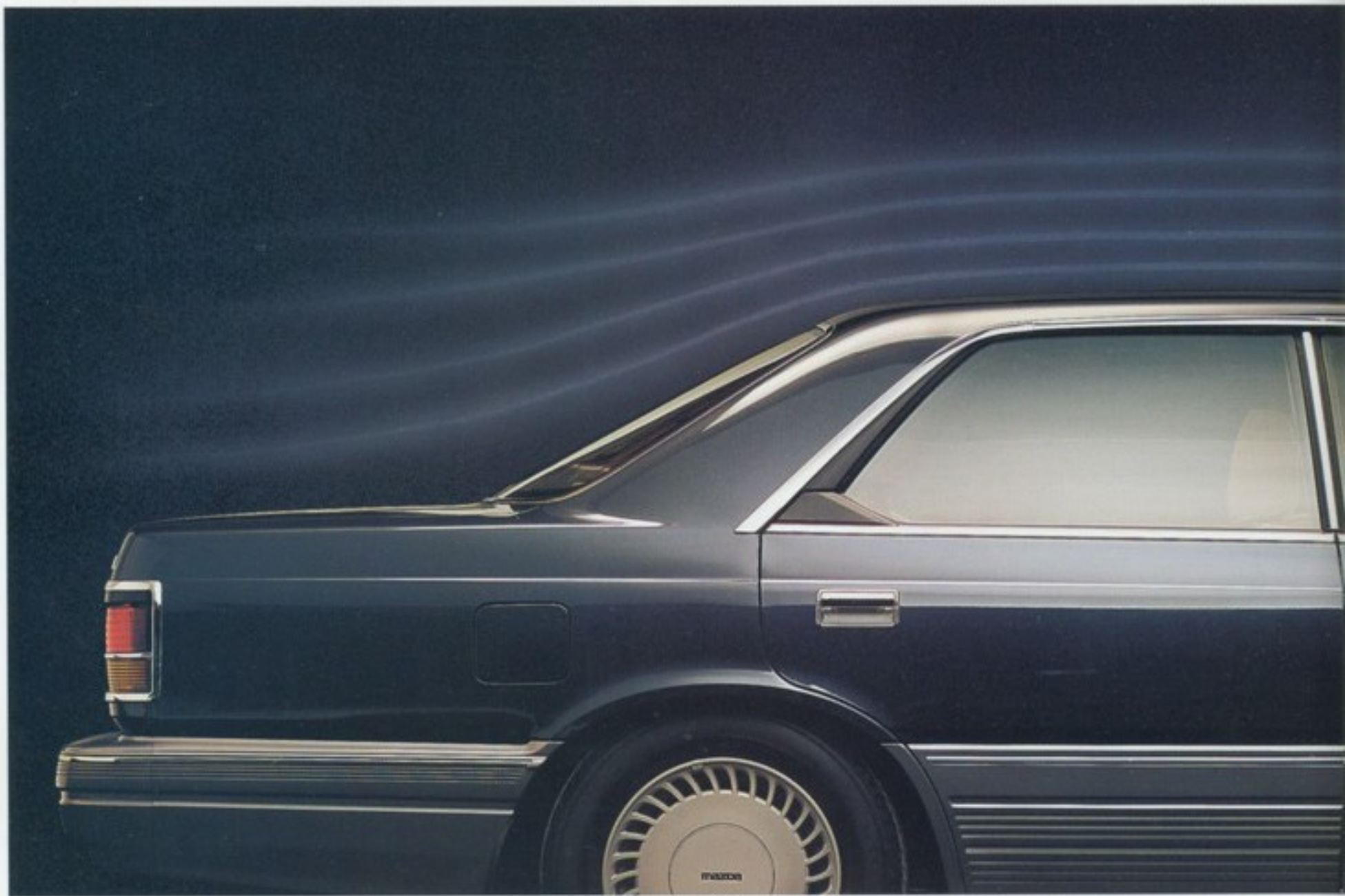
In addition to the normal automatic transmission modes of

Low, Second and Drive, there are three new operating modes. The first mode is the POWER range, designed for handling rapid, powerful acceleration. Secondly, the ECONOMY mode facilitates optimum shift speed and engine operation. Finally, the HOLD mode is especially designed for those moments when you are after an immediate response. It holds the transmission in a lower gear and is ideal for extra grip on slippery roads or greater passing acceleration.



It also provides greater low-down power for pulling heavy loads such as boats or trailers. These new modes add a whole new dimension to spirited automatic driving.





The art of setting the pace by design.

From your first glimpse of the new V6i luxury Sedan and Hardtop, you will know there's something very special about this automobile.

PURE ELEGANCE.

Perhaps it's the smooth flowing lines and contoured surfaces that effortlessly accentuate the stunning silhouette. Perhaps the combination of refinement and stateliness. Or the subtle blending of elegance and function with structural integrity.

The stylish, spacious luxury Sedan is characterised by the generous passenger compartment, low sloping nose and high rear deck. A picture of elegance with that feeling of space and room to move, to add to your driving pleasure.

Window size is dramatically larger, thereby increasing visibility, along with front end styling enhanced by rectangular head lights.

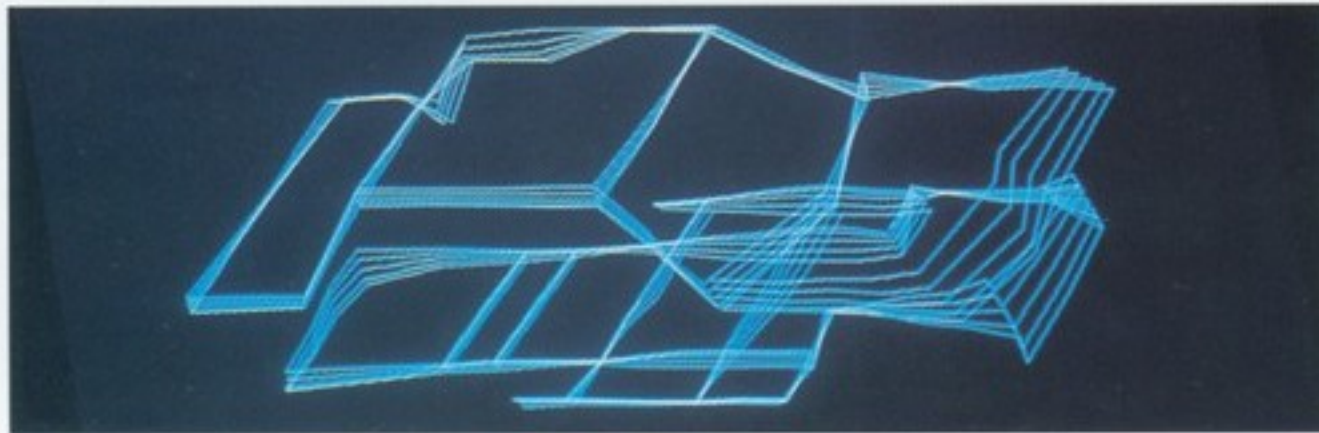
Single panel doors and

smooth C pillars again stress the structural security and quality.

If you prefer an even sportier style saloon, the luxury 4-door Hardtop is for you.

It's elegant, sporty, dashing and dynamic. The styling of the Hardtop reflects a truly high performance personal luxury saloon. Like the wide protective mouldings on the body sides, highlighting the sporty Hardtop profile, and the distinctive grille.

In designing such distinctive shapes for both the new Sedan and Hardtop, Mazda certainly have achieved outstanding aerodynamics. The superbly smooth design plus the extra touches like concealed wipers have enabled aerodynamic excellence. In fact, they have been enhanced, to a point where the drag coefficient is a mere 0.36, to ensure smooth driving. The same care and precision has been shown in the new body shell structure.





The key focus, as never before, has been on dynamic rigidity to achieve only the highest levels of stability, quietness and comfort. Mazda has used a process of testing various frequencies to different areas of the car's body, known as Modal Analysis. This has markedly improved the overall rigidity. The body's durability has also been clearly enhanced by incorporating advanced anti-rust measures.

However no automobile can be fully tested in a laboratory, no matter how involved the tests. So Mazda subjected this vehicle to unprecedented tests of rigour, both on-track and on-road at Mazda's now famous 'Global Road Circuit'. This circuit is a 3.4 kilometre road course made up of different road surfaces ranging from outback track to alpine pass. It's a true test of a car's ability to comfortably handle driving conditions anywhere in the world.



The exhilaration of dynamic performance.

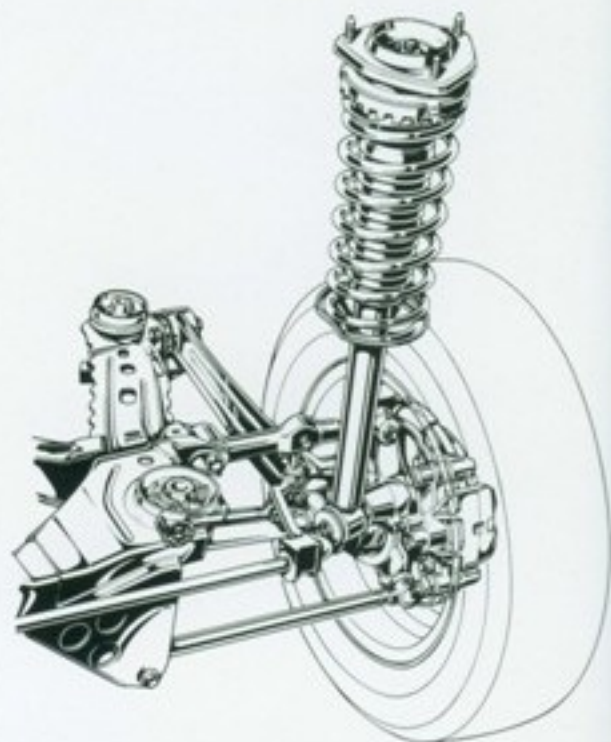
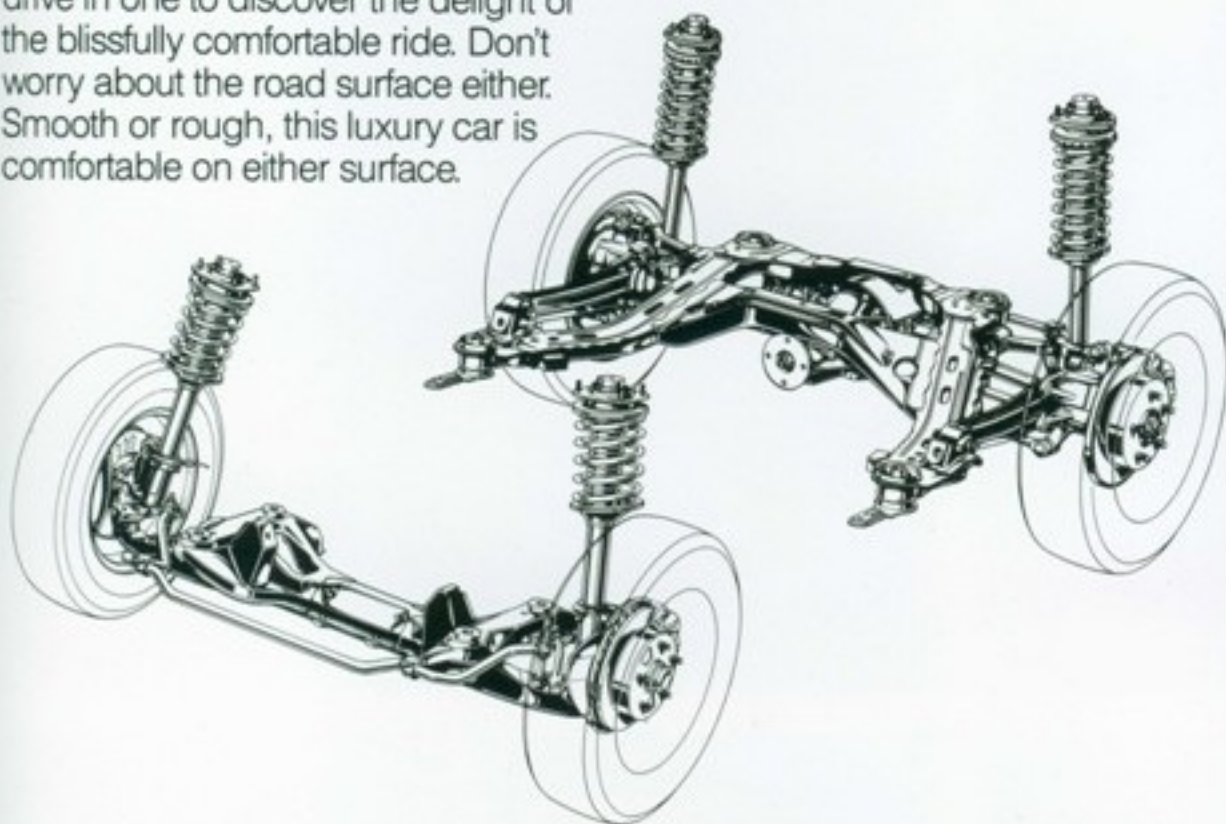
In maintaining the thoroughness and brilliance with which this luxury high performance saloon has been built, Mazda have gone to extraordinary lengths to design the ultimate in suspension, steering and braking systems.

The big new Mazda V6i is surely a classic example of the pleasure that comes from driving such a luxury car. You only need your first drive in one to discover the delight of the blissfully comfortable ride. Don't worry about the road surface either. Smooth or rough, this luxury car is comfortable on either surface.

UNIQUE E-LINK SUSPENSION.

Mazda have designed a new suspension system specifically for the new Mazda V6i.

The multi-link design on the rear suspension effectively and efficiently controls the suspension's dynamic geometry changes, thus ensuring safe vehicle road behaviour.



By combining this innovative system with MacPherson Struts on the front suspension, you have a totally integrated suspension system. A system that achieves the delicate balance between outstanding stability at high speeds, precise road handling, safe manoeuvrability and driver control, and a stable yet supple ride on any type of road surface. Most importantly this new suspension system provides both total control and dynamic excitement for you, the driver.





YOUR CHOICE OF RIDE.

This new Mazda V6i can even provide you with the luxury of exactly the type of ride you prefer. At the touch of a button you can change from a 'soft' ride suitable for city driving to a 'sports' mode for more spirited driving or cornering at higher speeds. Or you can simply relax in the 'automatic' mode and let the car make the choice for you depending on road conditions.

THE RIGHT DIRECTION IN STEERING.

Just as the suspension system is designed with the absolute pleasure of the driver and

passenger in mind, so is the advanced steering system.

All models have top of the range rack and pinion steering especially designed and engineered for optimum precision and response.

They are also equipped with electronic Speed Sensing Power Steering which allows you that luxurious feeling of absolute control over the car at highway speed, with the ease of ultra-responsive steering while idling.

The superb steering system also features a telescopic and tilt adjustable steering wheel for greater driver comfort.



PUTTING THE BRAKES ON.

As you would expect, an automobile with all this luxury and style has a braking system fully compatible with a high performance luxury car.

Four wheel disc brakes are utilised on all models. For extra security, a dual hydraulic circuit split between the front and rear brakes is employed. It is a braking system that allows both driver and passengers a feeling of total driving security even under the most extreme conditions. For extra efficiency, the specially designed Park Brake acts independently on its own drum, freeing the disc brakes for greater durability.









The elegance and restraint of a true high performance luxury saloon.

By the sheer design of the engine's compact layout and long wheel base, Mazda have created a roominess and plushness rarely seen in even the finest of large, luxury saloons.

STYLISH SURROUNDINGS.

From the moment you step inside the all new Mazda you will be impressed by the spaciousness and style of the interior. That extra room to move. The feeling of complete roominess that sets this car apart. This truly is a product of the most advanced vehicle dynamics and efficient cabin design.

Firstly, the gently contoured dashboard emphasising the cabin's extra width. The clearly uncluttered instrumentation with functional meters and fumble free controls designed for the driver.

There's the understated style of the single tone, co-ordinated blend of interior materials and textures. The enjoyment of the extra cabin length providing greater leg room for the driver or passenger alike. To ensure the driver and passengers are totally at ease, all seats are large, wide and sumptuous in quality. The driver's seat is six way adjustable with lumbar support for back protection.

There's the extra long seat slide to ensure that a driving position of continuous comfort is achieved. And tilt head rests further enhance the driver comfort and safety.

Other stylish features include an unusually large boot which can accommodate two sets of golf clubs with plenty of room to spare and front seat belt anchorage height adjusters ensure the seat belts sit comfortably no matter what your height. There's a compartment in the rear to conceal the centre belt when not in use as well as personal spot lamps, both front and rear, as an added touch of convenience.



KEEPING COOL.

Of course you would expect such a luxury saloon to have only the best in air conditioning.

Just touch any of the five control modes to find exactly the climate desired. This Electronic Logical Control Panel is so advanced, it even switches itself off when rapidly accelerating past other vehicles to give you the full measure of power. A fan assisted rear ventilator is fitted which can be controlled independently by rear seat passengers.

THE SOUND OF THE FUTURE.

Another enjoyable feature of this new Mazda V6i is the superb 6 speaker audio system. This system contains stereo AM/FM radio, electronic tuner, high power amplifier, graphic equaliser and cassette deck.



All of these components are especially blended to offer the ultimate in listening and driving pleasure and are enhanced by the whisper quiet ride at all speeds.

Mazda has designed and built a totally new, large, luxury, high performance saloon. An automobile for the driver who demands only the finest in motoring style, luxury and driving pleasure. The all new fuel injected, 3 litre, 18 valve, Mazda 929 V6i is truly your kind of car.





Electrically operated glass sunroof with tilt function.



Spacious luggage compartment.



High level stop lamp.



Front personal spot lamps.



Concealed windscreen wipers.



Entry light and rear personal spot lamps.



Fold down rear seat centre arm rest.



Electrically operated windows/central locking.



Telescopic steering wheel.



Tilt adjustable steering wheel.



Side window demisters.



Height adjustable front seatbelts.



Smooth and flush C-Pillars.



Remote control, spring mounted, electric mirrors.



Rear seat belt storage compartment.

Mazda 929 V6i

Specifications

| LUXURY FEATURES | 4DR H'TOP | 4DR SEDAN | SPECIFICATIONS | HARDTOP | SEDAN |
|---|---|---|-----------------------|-------------------------------------|---------------------|
| Transmission Three mode, 4-speed electronic automatic transmission | Yes | Yes | Engine: | V6 OHC | |
| Exterior Electrically operated remote control exterior mirrors Tinted side and rear windows Lower flank moulded protection sheets | Yes Yes Yes | Yes Yes — | Capacity cc | 2954 | |
| Instrumentation Tachometer Battery condition meter Temperature gauge Oil pressure, park brake, brake fail, tail light, stop light, washer fluid and fuel level warning lights | Yes Yes Yes Yes | Yes Yes Yes Yes | Bore and stroke mm | 90 x 77.4 | |
| Lights Quartz halogen head lamps Centre high level stop lamp Personal spot lamps, front and rear Luggage compartment light Illuminated entry system and courtesy lamps Illuminated ignition switch and driver's door key lock | Yes Yes Yes Yes Yes Yes | Yes Yes Yes Yes Yes Yes | Compression ratio | 8.5:1 | |
| Interior Tilt and telescopic adjustable steering wheel Leather bound steering wheel Rake, tilt, lumbar support and height adjustable driver's seat Height and tilt adjustable front headrests Adjustable front seat belt anchorages Fold down rear centre arm rest Rear seat belt storage compartment Full centre console Quartz digital clock Remote release luggage lid Remote release fuel filler door | Yes Yes Yes Yes Yes Yes Yes Yes Yes Yes Yes | Yes Yes Yes Yes Yes Yes Yes Yes Yes Yes Yes | Max Power (DIN) kW | 118 @ 5500 rpm | |
| Heating and Ventilation Variable speed heater/demister Electronic heater/demister controls Oscillating centre air vents Rear passenger air ducts with 3-speed fan Integrated air conditioning | Yes Yes Yes Yes Yes | Yes Yes Yes — Yes | Max Torque (DIN) Nm | 234 @ 4000 rpm | |
| Equipment Electrically operated glass sunroof with tilt function Cruise control Speed sensing power steering Central door locking Electrically operated windows 3-speed wipers with variable intermittent control Stereo AM/FM radio, cassette player, graphic equalizer and 6 speakers Automatic retracting antenna | Yes Yes Yes Yes Yes Yes Yes Yes | Yes Yes Yes Yes Yes Yes Yes Yes | Fuel system | Electronic Fuel Injection | |
| | | | Fuel Tank Capacity l | 70 | |
| | | | Chassis: | | |
| | | | Transmission | 4 speed Automatic 5 speed Manual | |
| | | | Brakes | 4 wheel power assisted disc | |
| | | | Suspension: Front | Independent MacPherson struts | |
| | | | Rear | Independent coil spring | |
| | | | Steering | Power assisted rack and pinion | |
| | | | Turning Circle m | 10.8 | |
| | | | Tyres | 195/65 HR 15 Radial | 195/65 HR 15 Radial |
| | | | Fuel Consumption City | 12.0 | |
| | | | (litres/100km) Hwy | 9.5 | |
| | | | Dimensions: | | |
| | | | Overall length mm | 4820 | 4885 |
| | | | Overall width mm | 1705 | 1705 |
| | | | Overall height mm | 1395 | 1425 |
| | | | Wheelbase mm | 2710 | 2710 |
| | | | Track: Front mm | 1440 | 1440 |
| | | | Rear mm | 1450 | 1450 |
| | | | Ground clearance mm | 140 | 140 |
| | | | Kerb mass Kg | 1475 | 1500 |

The fuel economy ratings quoted in this brochure are based on AS2877-1986 test results. You may experience different results depending on driving conditions and the condition of the vehicle.

The information in this brochure is current at the date of publication. The specifications and features shown are not necessarily available on all models. Please check the appropriate listings in this brochure for model application. Model availability may also vary from State to State. Mazda reserve the right to alter, without notice, model availability and the specifications and features available on each model. Mazda also reserve the right to change specifications and features from standard to optional and vice versa. Please consult your Mazda Dealer prior to placing an order to ascertain model availability, specifications, features and price. PUBLISHED MAY 1987.

Mazda Motors Pty. Limited. (Inc. in Vic.)
37 Lorimer Street, South Melbourne, Victoria 3205.

Mazda 3 year or 60,000km warranty, (whichever comes first), is available on Mazda 121, Mazda 323, Mazda 626, Mazda 929 and Mazda RX-7.

