

1 9 9 1 C H E V R O L E T

C A P R I C E



CONTENTS

CHAPTER ONE: THE NEW CAPRICE
2

CHAPTER TWO: EXTERIOR DESIGN
4

CHAPTER THREE: INTERIOR DESIGN
8

CHAPTER FOUR: ENGINEERING DESIGN
14



CHAPTER FIVE: SAFETY
20

CHAPTER SIX: CAPABILITIES
24

CHAPTER SEVEN: STANDARD FEATURES
26

CHAPTER EIGHT: OPTIONS
30

CHAPTER NINE: WARRANTY INFORMATION
35

THE TIME HAS COME.
1991 CAPRICE.

CONTENTS

CHAPTER ONE: THE NEW CAPRICE
2

CHAPTER TWO: EXTERIOR DESIGN
4

CHAPTER THREE: INTERIOR DESIGN
8

CHAPTER FOUR: ENGINEERING DESIGN
14



CHAPTER FIVE: SAFETY
20

CHAPTER SIX: CAPABILITIES
24

CHAPTER SEVEN: STANDARD FEATURES
26

CHAPTER EIGHT: OPTIONS
30

CHAPTER NINE: WARRANTY INFORMATION
35

CHAPTER ONE:
THE NEW CAPRICE

Introducing the new generation of the best-selling full-size car in history. Dramatically aerodynamic. Classically beautiful. Spacious and luxurious. And advanced in technology.

This is Caprice for 1991, the totally uncompromised full-size Chevrolet. A Chevrolet that:

- holds six people and their luggage in the most spacious Caprice sedan ever.
- is built on a solid full frame, with a long 115.9-inch wheelbase, rear-wheel drive and proven Full Coil suspension for unsurpassed riding comfort.
- features a standard Bosch ABS four-wheel anti-lock brake system and a 5.0 Liter V8 engine with EFI.
- is backed by the GM 3-Year/50,000-Mile Bumper to Bumper Plus Warranty.

The 1991 Caprice will challenge the world's finest sedans with a combination of advanced technology features never before seen at a Chevrolet price. This technology includes a standard driver-side Supplemental Inflatable Restraint system (air bag), and corrosion-resistant two-side-galvanized steel for most exterior body panels.

Two models are available: the most affordable Caprice Sedan shown at left, and the top-of-the-line Caprice Classic Sedan shown on various pages throughout this brochure.





CHAPTER TWO:
EXTERIOR DESIGN

At first glance, you might mistake this car for a limited-production European sedan with a price tag over \$50,000. You might, except...

The brand-new, dramatically aero shape of Caprice is shared with no other car. And it is a distinctly American design, from the eye-catching bright grille that quietly recalls classics of an earlier era to the bold wraparound tail lamps.



Caprice Classic Sedan.

Every detail has been executed with contemporary flair; the final touch is deep-shining base-coat/clear-coat paint in a choice of six colors.

While the 1991 Caprice is clearly trendsetting in style, it looks the way it does for reasons that go beyond form. The next two pages will provide a closer look at the function.

The smooth shape of Caprice helps reduce wind noise at highway speeds and also improves fuel economy (EPA estimated 17 MPG city, 26 MPG highway).

Specific design details that contribute to this car's impressive aerodynamics and resulting hushed highway ride include flush-mounted tinted glass and form-fitting bumpers. Parking lamps and Caprice Classic's standard cornering lamps are combined with the composite halogen headlamp units.

Driver visibility is enhanced by thin-pillar styling and a low hood line. Doors open wide for exceptional ease of entry/exit and close with a gentle push, thanks to a new latch design.

Base-coat/clear-coat paint is new for 1991. Not only does a base-coat/clear-coat finish provide a deep "wet-look" shine, it is a more durable, lasting finish. The result: world-class appearance.

All models feature protective body-side moldings and resilient body-color front and rear bumper facias that resist dings and scratches.

The new Caprice is quieter than ever. More efficient. More spacious. More accommodating. And therein lies the real beauty of its design.



All-new version of the triple rear lamp motif that has been a Chevrolet tradition since 1958.



Exacting fit is achieved via precise design and manufacture.



The roof line sweeps gently into the rear deck, contributing to excellent aerodynamics.



Dual aero-style mirrors are standard.



A low hood line, flush-fitting bumpers and composite-style headlamps add efficiency and dramatic style.



Chevrolet's "bowtie", the symbol of leadership in full-size cars.



The 1991 Caprice was carefully refined in the General Motors wind tunnel to provide an excellent aerodynamic coefficient of drag. The benefits are improved fuel economy and a quieter highway ride.



Smoothly contoured wheel openings contribute to aerodynamics. Body-side moldings are standard.



Flush glass contributes to the smooth shape of Caprice. Actual glass area is increased 62% from 1990.



Integral front cornering/parking lamps are standard on Caprice Classic.

CHAPTER THREE: INTERIOR DESIGN

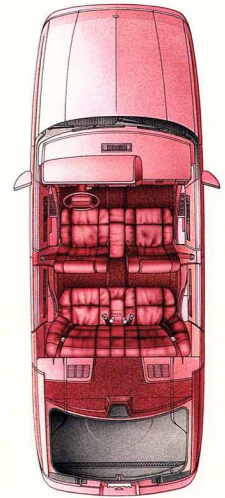
Spacious comfort for six passengers is a Caprice tradition wonderfully upheld for 1991.

In all important interior dimensions, the '91 either maintains or exceeds the roominess found in the 1990 Caprice. Total interior roominess increases by four cubic feet.

Whether your lifestyle includes frequent entertaining, family vacations, playing host to business clients, or the simple desire for the rare luxury of a genuine full-size car, Caprice rewards you with more total passenger comfort than any Mercedes-Benz, BMW or Chrysler sedan.

This spaciousness is combined with engineering that provides an exceptionally smooth, quiet ride. The quiet has been achieved via wind-deflecting aero styling, separate body-on-frame construction with extensive rubber cushioning, strict manufacturing tolerances and liberal use of sound-deadening acoustical materials.

Three interior trims are available. The Caprice Sedan features a standard cloth interior. Caprice Classic offers a choice of uplevel cloth or optional leather seating surfaces.

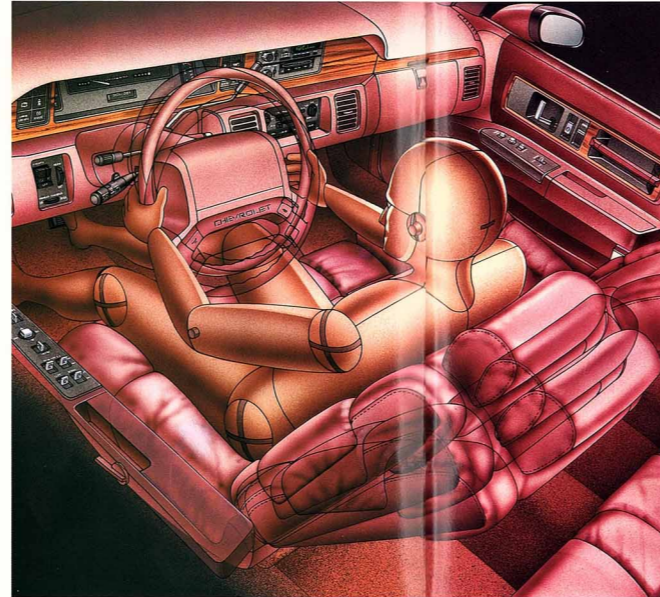


Caprice Sedan is one of the most spacious six-passenger cars available on the American market today, with more total interior room than any Mercedes-Benz, BMW or Chrysler sedan.



THE ART...

The quiet and spacious elegance of Caprice Classic '91 includes such features as quality cloth or optional hand-fitted leather seating surfaces, a split bench 55/45 front seat, front- and rear-seat center armrests and an optional Delco/Bose stereo music system.



THE SCIENCE...

In the '91 Caprice, luxury is also a science. Chevrolet interior designers have created a roomy, comfortable driving environment for almost anyone (from the petite to the full-sized). Great importance has been placed on visibility (glass area is up 62%), legibility of instrumentation and easy reach to controls. Among many new features are cup holders and coin holders, door storage compartments, and power windows with a driver's-side "Express Down" control.



Strategic use of acoustical/sound-deadening materials helps make one of America's quietest cars even quieter.



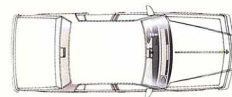
Caprice Classic cloth interior.

In a Caprice, there is room for everything but compromise. Caprice interiors are designed to American tastes. They are spacious (with room for six adults), luxurious (with a choice of standard cloth or optional leather seating surfaces) and practical (with standard cup holders and coin holders—and Scotchgard™ Fabric Protector applied at the factory).

Just how big is the '91 Caprice trunk? Exactly 20.4 cu. ft., largest of any Chevrolet sedan. In the real world, that's 18 bags of groceries or four sets of golf clubs, with room to spare.



The 20.4-cu.-ft. carpeted trunk is one of the largest in the industry. Features include a convenient cargo hold-down net and trunk lamp.



1990 Caprice.



1991 Caprice

By every measure, the longer, wider 1991 Caprice is a true six-passenger automobile. In fact, this is the most spacious Caprice Sedan ever, with a larger passenger compartment and more usable room than last year's Caprice.

DIMENSIONS (IN.)

	1991 CAPRICE	1990 CAPRICE
Wheelbase	115.9	115.9
Overall Length	214.1	212.2
Overall Width	77.0	75.4
Head Room front/rear	39.3/38.1	39.5/38.2
Leg Room front/rear	42.2/39.0	42.2/39.1
Shoulder Room f/r	63.4/63.4	60.5/60.5
Hip Room front/rear	57.0/56.9	55.0/55.3

Standard features in every Caprice include:

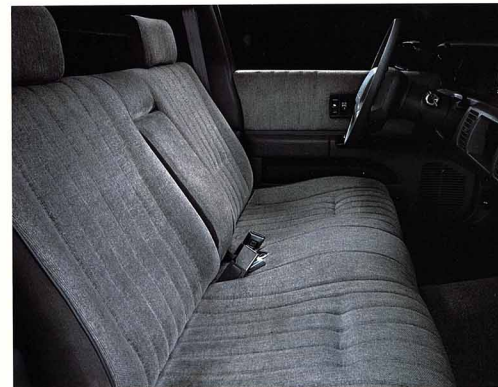
- Air conditioning.
- Delco AM/FM stereo sound system with seek/scan, dual front and rear speakers and digital clock.
- Highly legible analog instrumentation and straightforward, easy-to-reach and easy-to-use controls.
- Power steering and power brakes.
- Front pull-down center armrest.
- Cup holders, coin holders, intermittent wipers, door storage compartments, dual covered visor mirrors, interior courtesy lighting and headlamps-on warning tone.
- Underhood lamp, trunk lamp and glove box lamp.

In addition to even more luxurious fabrics and a reclining 55/45 split-bench front seat, the Caprice Classic interior features:

- Front- and rear-seat pull-down center armrests.
- Door-mounted courtesy lamps.



Scotchgard™ Fabric Protector protects the interior fabrics and door panels in the 1991 Caprice. It's a Chevrolet exclusive, for stain resistance and easy cleanup.



Caprice Sedan interior.

- Reading lamps (on rearview mirror).
- Storage pockets on front seat-backs.
- Power door locks.
- Power windows with driver's Express Down feature.
- Warning lamps for low-fuel, low-oil, low-coolant and low-windshield-washer-fluid levels.



A



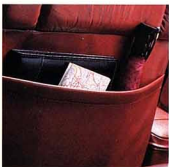
B



C



D



E

You expect an automobile with classically elegant styling to have an interior of the same caliber. The Caprice Classic with optional leather seating surfaces more than meets that expectation.

It's all here. Yards of glove-soft leather. Front- and rear-seat center armrests. Courtesy lighting. Available luxury options include GM's highly acclaimed Delco/Bose AM/FM stereo sound system, electronic keyless entry system, electronic compass and heated electric power mirrors.

Add the quiet power of a standard V8 and the hushed ride that a full frame/Full Coil design delivers, and you have the classic American full-size car, refined to contemporary tastes.

These are quality appointments and features you'd expect to find in cars costing thousands more. But why spend more, when Caprice lets you have so much for so much less?

A The optional Delco/Bose sound system features AM/FM stereo, stereo cassette tape player, seek /scan and digital clock.

B Caprice Classic models feature standard warning lamps for low-fuel, low-oil, low-coolant and low-windshield-washer fluid levels.

C Caprice Classic's standard power windows include a driver's "Express Down" feature for added convenience.

D Pull-out cup holders hold coffee cups, soft-drink cups or cans.

E Convenient storage areas are included in every door and in front split-bench seat-backs.

Optional Caprice Classic interior with leather seating surfaces.





At left: Caprice on the high-bank test track at the General Motors Proving Grounds in Milford, Michigan. At right: Caprice takes a salt bath as part of comprehensive corrosion-prevention test.

CHAPTER FOUR: ENGINEERING DESIGN

The car America does best—the full-size luxury automobile—is now done better. Caprice has been refined. Retuned. Retested.

Like all the world's legendary road cars, Caprice has a standard V8 engine and rear-wheel drive. Advantages include quiet, smooth power and stable, predictable handling.

New technology for 1991 includes a Bosch four-wheel anti-lock brake system (ABS), driver-side Supplemental Inflatable Restraint system (air bag),



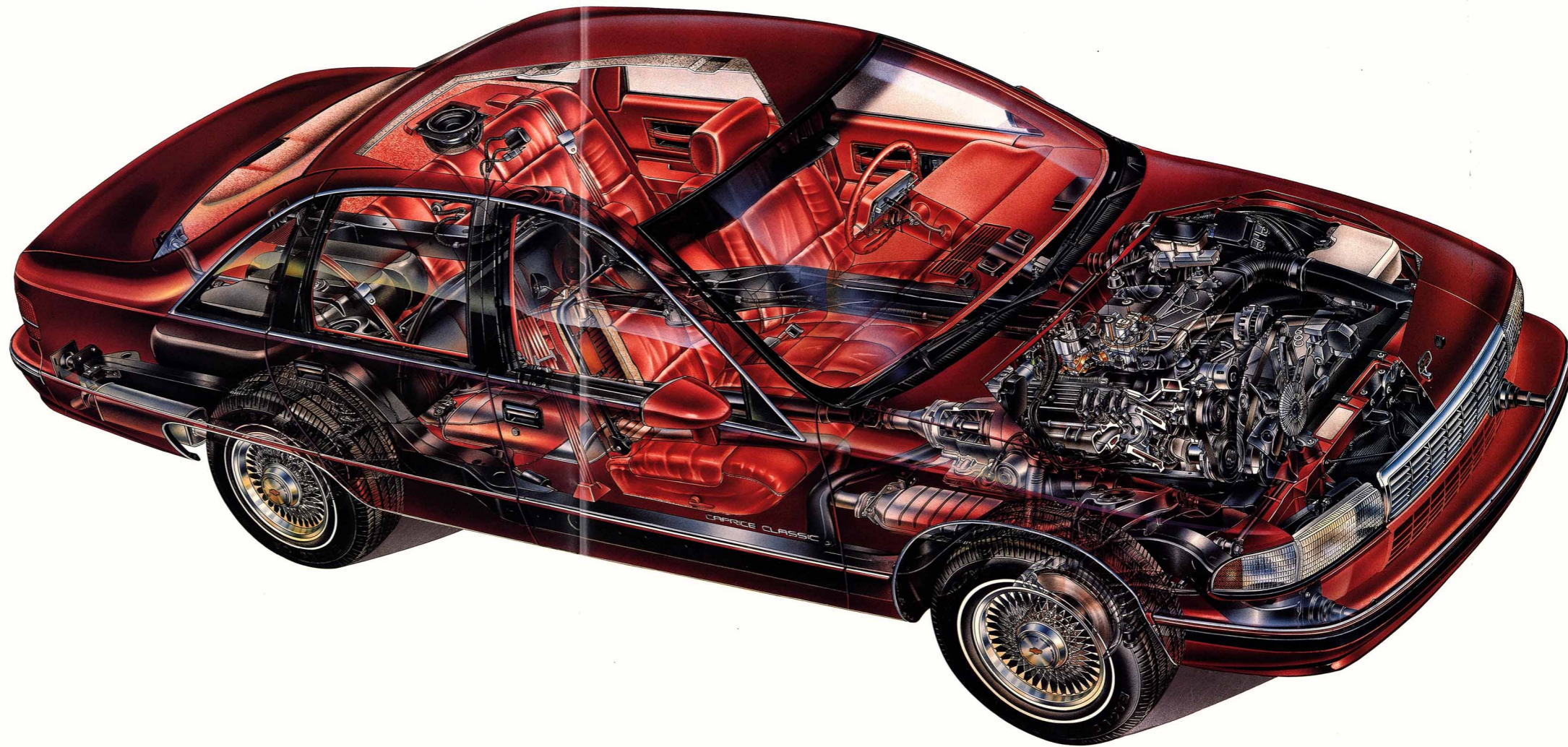
and the use of two-side-galvanized steel for most body panels.

The world's great cars are designed with emphasis on safety, comfort, performance and quality. In all respects, Caprice for 1991 is one of them.

And at a Chevrolet price, it's also one of the world's great values.

The closer you look at Caprice, the better Caprice looks . . .

- ◻ A responsive 5.0 Liter V8 with Electronic Fuel Injection is standard. Easy-maintenance features include a single belt accessory drive designed to never need tensioning. Horsepower is 170 at 4200 RPM.
- ◻ Standard 4-speed automatic overdrive transmission provides quiet, low-RPM highway cruising and helps to increase fuel economy (EPA estimated 17 MPG City, 26 MPG Highway).
- ◻ The industry's finest corrosion protection is provided by the use of two-side-galvanized steel for most exterior body panels. All automakers provide inner galvanized surfaces to protect against "rust-through." Chevrolet has gone the extra step by using galvanized steel on outside surfaces. This helps prevent unsightly surface rust if scratched or chipped.
- ◻ Full Coil suspension provides Chevrolet's best ride ever. A large coil spring at each wheel, combined with specially tuned gas-pressurized shock absorbers, filters out ride harshness before it gets to the passenger compartment.
- ◻ This is one of the world's most advanced braking systems available in a production automobile, and it is standard on every 1991 Caprice. Bosch four-wheel ABS (anti-lock brake system) helps the driver to retain maneuverability during hard braking. Bosch ABS is combined with a power front disc/rear drum system.
- ◻ Base-coat/clear-coat paint provides a beautiful "wet-look" shine and increased resistance to fading. The final clear coat is applied over four coats of rust-fighting primers and mirror-smooth paint.
- ◻ Driver-side Supplemental Inflatable Restraint system (air bag) is located in the hub of the steering wheel. This supplemental system can provide added protection in the event your Caprice is involved in a moderate to severe frontal collision. For maximum protection in frontal and all other collisions, driver and all passengers should be properly restrained with safety belts.
- ◻ Comprehensive safety engineering includes energy-absorbing front and rear structures, a rigid cage structure surrounding the entire passenger compartment, and reinforced perimeter-type frame rails and side-guard door beams.
- ◻ Frame is attached to the body at 16 rubber-cushioned mounting points. It's a rugged foundation that enhances Caprice's quiet ride.
- ◻ All-season steel-belted radial ply tires provide excellent traction and driving stability in the rain and snow.
- ◻ Energy-absorbing steel front and rear bumpers are designed to absorb a 5-mph impact and feature resilient covers to resist minor dings and dents.
- ◻ A totally new type of seat construction is designed to provide excellent comfort and support.





CAPRICE CLASSIC



CHAPTER FIVE: SAFETY

General Motors is the world leader in automotive safety research, and the design of the 1991 Chevrolet Caprice reflects that leadership.

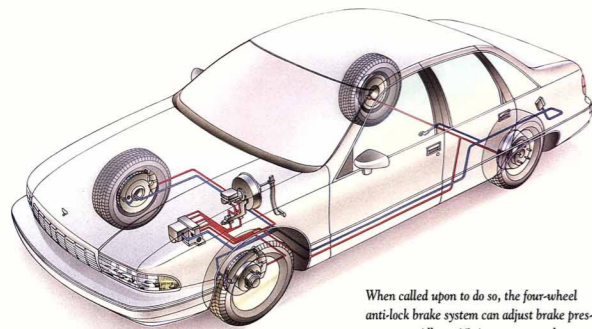
Safety features first introduced on the Chevrolet Caprice include the energy-absorbing steering column (1967), side-guard door beams (1969) and energy-absorbing front and rear bumpers (1972).

Other world-class safety design features of the 1991 Caprice include energy-absorbing front and rear body structures, a reinforced cage structure surrounding the entire passenger compartment and lap/shoulder safety belts for all outboard seating positions. (For a detailed listing of safety features, see page 35 of this brochure.)

And for 1991, Caprice becomes the first American sedan under \$20,000* to feature both a driver-side supplemental air bag and four-wheel anti-lock brakes as standard equipment.

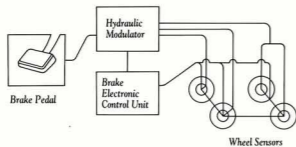
*Based on manufacturer's suggested retail prices.

GM's leadership in safety research is reflected in the design of Caprice. Standard four-wheel anti-lock brake system and driver-side Supplemental Inflatable Restraint system (air bag) may qualify you for comprehensive insurance discounts. Ask your agent.



When called upon to do so, the four-wheel anti-lock brake system can adjust brake pressure as rapidly as 15 times per second, a rate even the most skilled professional driver cannot attain.

The Bosch ABS four-wheel anti-lock brake system helps you maintain steering control even in panic stops.



The four-wheel anti-lock brake system uses computer electronics to control wheel lockup during hard braking. Wheel sensors inform the ABS computer of the comparative velocity of each of the car's four wheels.

A.B.S. (Anti-Lock Brake System)

An advanced four-wheel anti-lock brake system (ABS) is standard on every 1991 Caprice. ABS reduces the chance of wheel locking during braking and is designed to help you maintain steering control even in a panic stop in rain, on snow or on ice.

ABS uses a computer to help keep vehicle wheels from locking during hard braking, thereby assisting the driver in retaining control on most surfaces. Sensors monitor how fast the wheels are rotating and feed data continuously to a microprocessor in the vehicle to signal that a wheel is approaching lockup. The computer responds by sending a signal to a hydraulic modulator to release and re-apply brake pressure—up to 15 times per second—as required. This “pumping action” (faster than is humanly possible) continues as long as the driver maintains pressure on the brake pedal and an impending wheel-lock condition is sensed.

ABS can help reduce stopping distances under most circumstances and enhance the opportunity to steer around objects while braking.

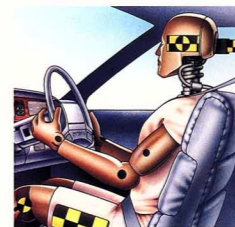
S.I.R. (Supplemental Inflatable Restraint)

A driver-side Supplemental Inflatable Restraint system (SIR or air bag) is a new safety feature standard in all 1991 Caprice models.

The SIR is an inflatable occupant restraint system that is concealed in the steering wheel hub until it is activated by a moderate to severe frontal collision.

When a frontal impact occurs at sufficient speed (with this system, the predetermined level is comparable to a 24-mph collision with a parked car or a 12-mph barrier impact), sensors send a signal to the Inflatable Restraint (air bag) which inflates in a fraction of a second. The air bag functions to help restrain the driver, then quickly deflates. The entire inflate/deflate cycle is over in less than one second.

For maximum protection in frontal and all other collisions, the driver and all passengers should be properly restrained with safety belts. Safety belt use is the major factor in any system of automotive occupant protection.



In less than 1/100th of a second after impact, crash sensors trigger the SIR inflator, and harmless nitrogen gas begins to fill the fabric pillow.



Peak inflation occurs in less than 1/25th of a second—faster than the blink of an eye. Even as the bag is inflating, some of its air is being released through the fabric to further the cushioning effect.



The cushion deflates rapidly as the crash ends, leaving occupant free to unbuckle safety belt and leave vehicle.



New energy-absorbing front and rear bumpers are designed to absorb a 5-mph impact without damage. These steel bumpers feature flush-fitting body-color plastic covers designed to resist minor dings and dents.

In a major impact, the 1991 Caprice is designed to crush in a controlled manner, so that the front or rear end of the vehicle structure absorbs the greater portion of the energy of most impacts. This “progressive crush” design helps to keep the passenger compartment intact. The safety belts secure the occupants inside the passenger compartment, where they can “ride down” the crash and help reduce their chance of injury.



Caprice can tow up to 5000 lbs. when properly equipped with the optional trailering package (includes ride-and-handling suspension, heavy-duty cooling, 3.08 ratio performance axle and engine oil cooler). See your dealer for specific trailering information.

CHAPTER SIX: CAPABILITIES

If there is one word to best describe the new Caprice, that word is "capable."

Caprice does everything you expect a full-size car to do, and does it well. Every facet of design reflects this Caprice mission.

This Chevrolet simply performs beyond the capabilities of many smaller front-drive automobiles. It seats six in luxurious comfort, and provides up to 20.4 cu. ft. of luggage space. Offers riding quality and quiet that is state-of-the-art. Delivers silky-smooth V8 performance, and highway fuel economy superior to many small 6-cylinder powered cars (EPA estimated 17 MPG city, 26 MPG highway). And should you desire, the properly equipped Caprice will tow up to 5000 lbs.



	1991 CAPRICE CLASSIC	'90 Lexus LS400	'90 Infiniti Q45	'90 Lincoln Continental	'90 Ford Crown Victoria	'90 Taurus LX
Base price*	N/A at time of printing	\$35,000	\$38,000	\$29,422	\$17,257	\$16,180
Engine type and displacement	V8/ 5.0 Ltr.	V8/ 4.0 Ltr.	V8/ 4.5 Ltr.	V6/ 3.8 Ltr.	V8/ 5.0 Ltr.	V6/ 3.0 Ltr.
EPA Est. Mileage City/Highway	17/26	18/23	16/22	18/25	17/24	20/29
Rear-drive	YES	YES	YES	NO	YES	NO
Anti-lock brakes	STD.	STD.	STD.	STD.	N/A	OPT.
Driver-side air bag	STD.	STD.	STD.	STD.	STD.	STD.
Full-frame construction	STD.	N/A	N/A	N/A	STD.	N/A
Two-side-galvanized steel for most body panels	STD.	N/A	N/A	N/A	N/A	N/A
Scotchgard™ Fabric Protector	STD.	N/A	N/A	N/A	N/A	N/A
Wheelbase (in.)	115.9	110.8	113.4	109.0	114.3	106.0
Interior volume (EPA index)	114	98	95	104	111	100
Trunk space (cu. ft.)	20.4	14.0	14.8	19.0	21.0	17.0
Maximum gross trailer weight	5000	—†	—†	2000	5000	2000

*Manufacturers' suggested retail prices including dealer prep. Tax, license and optional equipment additional. †Trailer not recommended by the manufacturer.

TRAILERING CAPABILITIES

(Consult the 1991 Caprice owner's manual for general information on trailering.)

Trailer Classification	Light	Medium	Heavy
Gross Trailer Weight (lbs.)	up to 2000	3000	5000
Maximum Tongue Load (lb.)	200	360	600
Engine:	5.0 Liter V8 with EFI		
Transmission	Automatic, 4-speed		
Minimum Axle Ratio (to 1)	2.56	3.08	3.08*
Minimum Tire Size	P205/75R-15	P225/70R-15	P225/70R-15
Heavy-Duty Radiator	Required		
Generator 85 Amp	Std.		
Trailer Wiring Harness	ACS	ACS	ACS
Suspension	Std.	FE2*	FE2*
Trailer Hitch			
Dead Weight Type	ACS		
Weight-Distribution Platform Type		ACS*	ACS*

ACS—Available from outside source only.

*Requires trailering equipment.

CHAPTER SEVEN:
STANDARD FEATURES

The stylish Caprice you see here is the base sedan, without any optional equipment. Yet it is one of the best-equipped full-size cars you can buy. And certainly one of the most affordable.

In designing the Caprice, Chevrolet instituted a new "Voice of the Customer" program. Thousands of car buyers were interviewed, and provided a profile of what they expect in their next vehicle.

Those expectations include such attributes as a state-of-the-art sound system, air conditioning, fuel-injected performance and a smooth, quiet ride. Today's car buyers demand excellent quality in design and manufacture, and reliability backed by a quality service network and a meaningful warranty (such as the GM 3-Year/50,000-Mile Bumper to Bumper Plus Warranty).

Chevrolet studied those needs and desires, and created a car that is, in the best Chevrolet tradition, a great American value.

Caprice Sedan.



STANDARD FEATURES

CAPRICE

- 5.0 Liter V8 with EFI
- P205/75R-15 all-season steel-belted radial ply tires
- Air conditioning
- Base-coat/clear-coat paint
- Body-side lower moldings
- Brakes: Bosch four-wheel ABS power front disc/rear drum system
- Bumper to Bumper Plus Warranty (see your dealer and page 35 of this brochure for terms of this limited warranty)
- Cloth bench seats with front center armrest
- Composite halogen headlamps
- Corrosion protection: two-side-galvanized steel for most body panels
- Coin holders
- Cup holders
- Delco AM/FM stereo with seek/scan, dual front and rear speakers and digital clock
- Deluxe luggage compartment trim

- Door storage compartments
- Dual aero-style mirrors, left-hand remote
- Dual covered visor mirrors
- 4-speed automatic over-drive transmission
- Full Coil suspension
- Full perimeter-type frame
- Full wheel covers
- Glove box lamp
- Headlamps-on reminder tone
- Intermittent wipers
- Instrument panel courtesy lamps
- In-trunk cargo net
- Luggage compartment lamp
- Power steering
- Scotchgard™ Fabric Protector (on seats and door panels)
- Side window defoggers
- Supplemental Inflatable Restraint system (driver-side air bag)
- Temperature gage
- Tinted glass
- Trip odometer
- Trunk lamp
- Underhood lamp
- Wheel-opening moldings.

CAPRICE CLASSIC

In addition to or replacing Caprice equipment, Caprice Classic offers:

- 15" x 7" aluminum wheels
- Door-mounted courtesy lamps
- Front cornering lamps
- Instrument panel warning lamps; low-fuel, low-oil, low-coolant, low washer-fluid levels
- Level II cloth upholstery, with 55/45 reclining split front seat, and front/rear center armrests
- Power door locks
- Power windows with driver-side Express Down feature
- Reading lamps
- Storage pockets on front seat backs.



An easy-to-use trunk cargo net helps keep small packages secure. Total usable trunk space is a roomy 20.4 cu. ft.



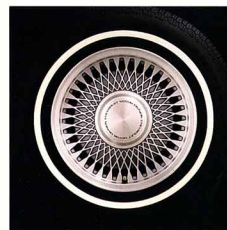
Interior reading lamps, located on rearview mirror, are standard on Caprice Classic and optional on Caprice.



Delco AM/FM Stereo Sound System with stereo cassette tape player.

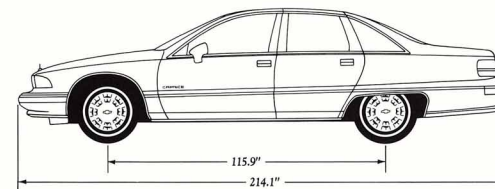
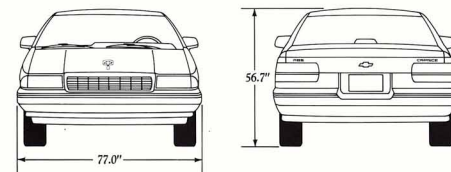


Caprice full wheel cover.



Caprice Classic aluminum wheel. Optional white-stripe tire shown.

DIMENSIONS (in.)	
Wheelbase	115.9
Overall length	214.1
Width	77.0
Overall height	56.7
Head room f/r	39.3/38.1
Leg room f/r	42.2/39.0
Shoulder room f/r	63.4/63.4
Hip room f/r	57.0/56.9
Trunk space	20.4 cu. ft.
Fuel tank capacity	23.0 gal.



EXTERIOR COLORS



Silver Metallic



Black



Black Sapphire Blue Metallic



Dark Maple Red Metallic

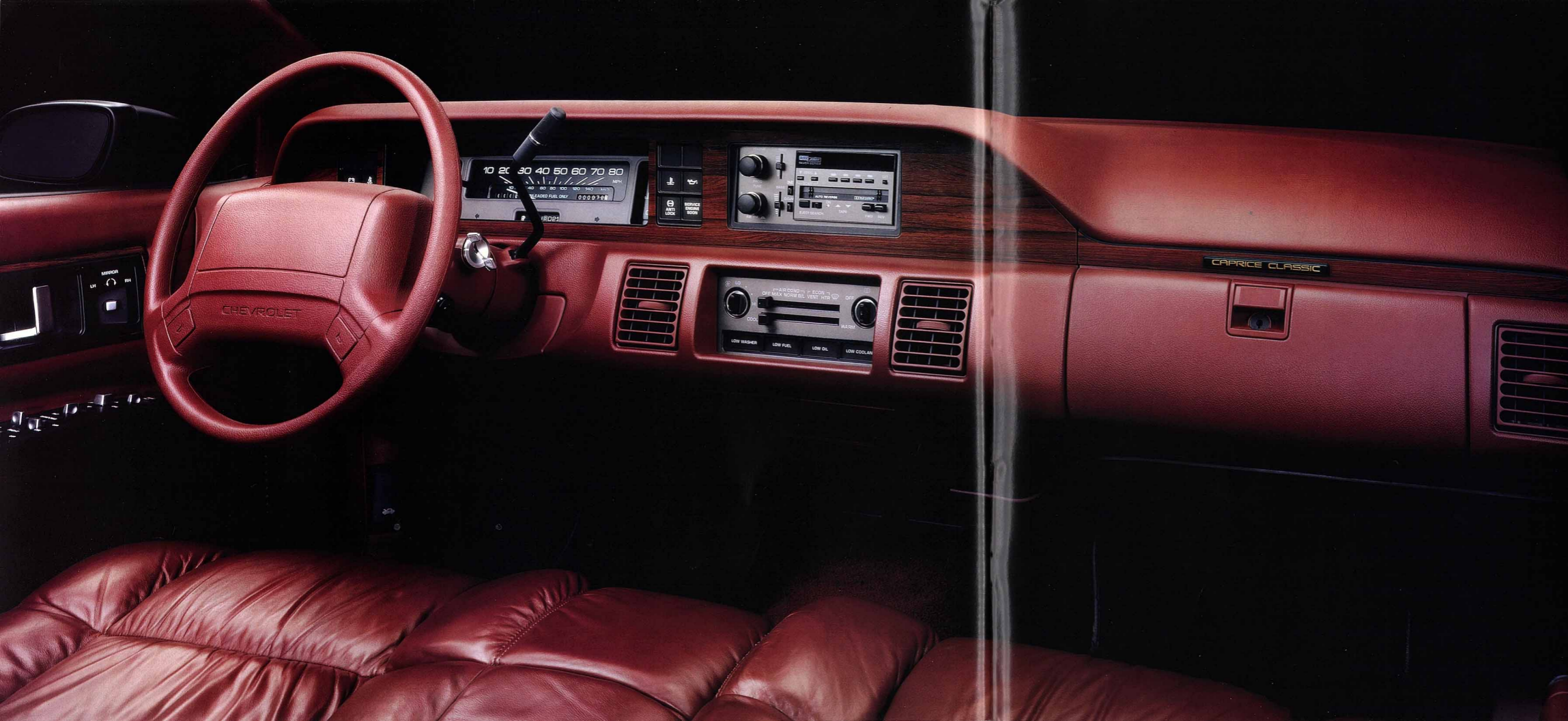


Medium Gray Metallic

White

INTERIOR/EXTERIOR COLOR COMBINATIONS

Interior Colors	Dark Blue	Gray	Maroon
Caprice cloth	■	■	■
Caprice Classic cloth	■	■	■
Caprice Classic leather	■	■	■
Exterior Colors			
Silver Metallic	■	■	■
Black Sapphire Blue Metallic	■	■	
White	■	■	■
Black		■	■
Dark Maple Red Metallic		■	■
Medium Gray Metallic		■	■



CHAPTER EIGHT: OPTIONS

Both Caprice and Caprice Classic models are available with a wide selection of options, many of which are grouped in convenient Preferred Equipment Groups.

Luxury options available for the first time (depending on model and equipment selected) include a Delco/Bose sound system specifically tailored to the acoustics of Caprice, a remote keyless entry system, electronic compass and heated outside mirrors.

Other comfort/convenience features you can add include a six-way power front seat, leather seating surfaces on Caprice Classic and a power antenna.

Among the many traditional favorites are the Comfortilt steering wheel, electronic speed control, Twilight Sentinel headlamp control, limited-slip rear axle, a Ride/Handling package and a trailering package.

Caprice Classic interior with the following options: leather seating surfaces, Delco/Bose stereo sound system, electronic speed control, six-way power seat and Comfortilt steering wheel.

OPTIONS

PREFERRED EQUIPMENT GROUPS

The 1991 Caprice and Caprice Classic feature optional Preferred Equipment Groups that help simplify the buying process. Choose the package containing the equipment you desire, then select from the accompanying list of individual options. Some restrictions apply. See your dealer for details.

CAPRICE SEDAN	1	2
Preferred Equipment Group 1		
Carpeted Floor Mats, Front and Rear	■	■
Comfortilt Steering Wheel	■	■
Electronic Speed Control with Resume Speed	■	■
Power Door Locks	■	■
Power Trunk Opener	■	■
Power Windows with Express Down Feature	■	■
Preferred Equipment Group 2		
Dual Reading Lamps in Rearview Mirror		■
Illuminated Right-Hand Visor Mirror		■
Power Antenna		■
Power Driver's Seat, 6-Way (Split Bench Front Seat only)		■
Radio: AM/FM Stereo with Seek/Scan, Stereo Cassette Tape Player with Auto Reverse, Extended Range Sound Front and Rear Speakers and Digital Clock		■
Mirrors, Twin Electric Remote		■

CAPRICE CLASSIC SEDAN	1	2
Preferred Equipment Group 1		
Carpeted Floor Mats, Front and Rear	■	■
Comfortilt Steering Wheel	■	■
Electronic Speed Control with Resume Speed	■	■
Illuminated Right-Hand Visor Mirror	■	■
Power Driver's Seat, 6-Way	■	■
Power Trunk Opener	■	■
Radio: AM/FM Stereo with Seek/Scan, Stereo Cassette Tape Player with Auto Reverse, Extended Range Sound Front and Rear Speakers and Digital Clock	■	
Preferred Equipment Group 2		
Keyless Remote Door Lock and Trunk Opener		■
Electronic Compass in Rearview Mirror		■
Mirrors, Twin Electric Remote		■
Power Antenna		■
Power Passenger Seat, 6-Way		■
Twilight Sentinel Headlamp System		■
Radio: Delco/Bose Music System, AM/FM Stereo with Seek/Scan, Stereo Cassette Tape Player with Auto Reverse, Delco/Bose Sound System and Digital Clock		■

INDIVIDUALLY AVAILABLE OPTIONS

- (May be added to any Preferred Equipment Group if not already included.)
- P205/75R-15 White-Stripe Tires
 - P225/70R-15 White-

- Stripe Tires (Requires Ride/Handling or Trailing Package)
- Electric Rear Window Defogger (includes electrically heated outside rearview mirrors with Caprice and Caprice Classic Preferred Equipment Group 2)

- Full-Size Spare Tire
 - Limited-Slip Differential (includes 3.08 axle ratio to replace standard 2.56 axle ratio)
 - Power Door Locks (standard on Caprice Classic)
 - Ride/Handling Package (requires P225/70R-15 White-Stripe Tires)
 - Trailing Package (includes ride-and-handling suspension, heavy-duty cooling, 3.08 rear axle ratio and engine oil cooler; requires P225/70R-15 White-Stripe Tires).
- Group 1; not available with Caprice Classic Preferred Equipment Group 2)
- Delco/Bose Music System. Electronically Tuned AM/FM Stereo Radio with Seek/Scan, Stereo Cassette Tape Player with Auto Reverse, and Digital Clock (optional on Caprice with Preferred Equipment Group 2 only; included on Caprice Classic with Preferred Equipment Group 2).

OPTIONAL SOUND SYSTEMS

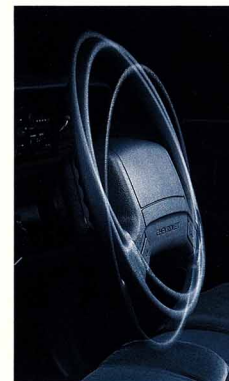
- Delco Electronically Tuned AM/FM Stereo Radio with Seek/Scan, Stereo Cassette Tape Player with Auto Reverse, Extended Range Sound Front and Rear Speakers and Digital Clock (included with Caprice Preferred Equipment Group 2 and Caprice Classic Preferred Equipment



Optional Electronic Compass automatically projects your direction of travel on rearview mirror in black translucent characters. Available Caprice Classic only.



Optional illuminated right-hand visor mirror.



Optional Comfortilt steering wheel adjusts to suit your personal driving style.



Electronically tuned AM/FM stereo with seek/scan, stereo cassette tape player, front and rear Extended Range speakers and digital clock.



Optional dual heated electronic remote mirrors stay clear at the touch of the rear defogger switch.



Optional Keyless Entry allows you to lock or unlock your doors, and unlock trunk from up to 30 feet away.

Optional Twilight Sentinel. Automatically turns lights on and off. Includes delay timer feature that allows you to keep headlights lit for up to 3 minutes after you leave car.

NEW DELCO/BOSE MUSIC SYSTEM

Delco/Bose Music Systems are recognized as among the finest automotive audio systems available. Now a version of this premium audio system is optional in the Chevrolet Caprice.

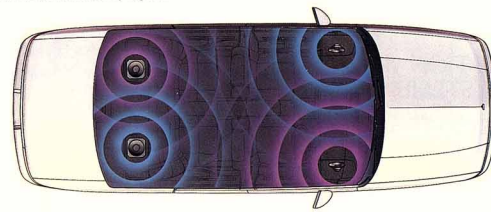
The Delco/Bose Music System is an acoustically tailored, actively equalized music system designed specifically for the 1991 Caprice. Speakers, amplifiers, radio and electronics are all carefully tuned for optimum efficiency, bass response, dynamic range and musical detail.

Components include four speakers, a power module containing three amplifiers, and a Delco electronically tuned AM/FM stereo receiver and stereo cassette player. This receiver includes special tone controls, fader and Dynamic Equalization circuits, seek/scan, Dolby Noise Reduction® and Automatic Music Search.

The three amplifiers feature integral equalization networks. Each active equalizer is the acoustic equivalent of a 32-band custom equalizer. The active equalization is designed specifically for the Caprice interior.



The optional Delco/Bose Music System is a top-of-the-line audio system customized precisely to the interior characteristics of Caprice.



WARRANTY INFORMATION

Our pride and confidence in the 1991 Caprice are clearly reflected in the GM 3-Year/50,000-Mile Bumper to Bumper Plus warranty. This security blanket for your new Caprice covers almost everything from front to back, road to roof. Service is available through the world's largest dealer network, nearly 5,000 Chevrolet dealers nationwide. **GM 3-YEAR/50,000-MILE BUMPER TO BUMPER PLUS WARRANTY**

GM's 3-year/50,000-mile limited warranty covers repairs for the 1991 Chevrolet Caprice, including labor and parts, to correct any defects in material or workmanship occurring during the warranty period. After the first year or 12,000 miles there is a \$100 deductible per repair visit. Warranty features include air conditioning repair, towing, no-cost warranty transfer, 6-year/100,000-mile body sheet rust-through protection and 5-year/50,000-mile emission control system coverage. Items not covered include tires (which are covered by their manufacturer) and normal maintenance. See your Chevrolet dealer for terms of this limited warranty.

ADDITIONAL INFORMATION

SAFETY FEATURES

Occupant Protection

- Supplemental Inflatable Restraint, driver-side only, with manual lap/shoulder safety belts for the driver and right front passenger
- Manual lap/shoulder safety belts, outboard rear seat positions
- Manual lap safety belts, center front/rear seat positions
- Energy-absorbing instrument panel
- Energy-absorbing front seat-back tops
- Interlocking door latches
- Side-guard door beam
- Passenger-guard inside door lock handles
- Safety armrests
- Head restraints, driver and right front passenger (adjustable)
- Breakaway inside rearview mirror
- Security door locks and door retention components.

Accident Avoidance

- Side marker lights and reflectors
- Parking lamps that illuminate with headlamps
- Four-way hazard warning flasher
- Back-up lights
- Center high-mounted stop lamp
- Directional signal control with lane change feature
- Windshield defroster, washer and multi-speed wipers
- Inside rearview mirror
- Outside left and right rearview mirror
- Brake system with dual master cylinder and warning light
- Starter safety switch
- Dual-action hood latch
- Low-glare finish on inside windshield moldings, wiper arms and blades, metallic steering wheel surfaces
- Illuminated heater and defroster controls
- Tires with built-in tread-wear indicators.

Theft Deterrence

- Audible reminder for ignition key removal
- Theft-deterrent steering column lock
- Visible vehicle identification number.

Important: A Word About This Catalog

We have tried to make this catalog as comprehensive and factual as possible. We reserve the right, however, to make changes at any time, without notice, in prices, colors, materials, equipment, specifications, models and availability. Since some information may have been updated since the time of printing, please check with your Chevrolet dealer for complete details.

A Word About Engines

Chevrolets are equipped with engines produced by different operating units of GM, its subsidiaries or suppliers to GM worldwide.

A Word About Assembly

Chevrolets are assembled by different operating units of General Motors, its subsidiaries or suppliers to GM worldwide. Chevrolets incorporate thousands of components produced by different operating units of GM, its subsidiaries or suppliers to GM worldwide. We sometimes find it necessary to produce Chevrolets with different or differently sourced components than originally scheduled. All such components have been approved for use in Chevrolets and will provide the quality performance associated with the Chevrolet name. Since some options may be unavailable when your vehicle is assembled, we suggest that you verify that your vehicle includes the equipment you

ordered, or if there are changes, that they are acceptable to you.

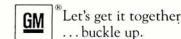
A Word About Updated Service Information

Chevrolet regularly sends its dealers useful service bulletins about Chevrolet products. Chevrolet monitors product performance in the field. We then prepare bulletins for servicing our products better. Now you can get these bulletins, too. Ask your dealer. To get ordering information, call toll free 1-800-551-4123.

A Word About Corrosion Protection

Chevrolets are designed and built to resist corrosion. All body sheet metal components are warranted against rust-through corrosion for 6 years/100,000 miles. Application of additional rust-inhibiting materials is not required under the corrosion coverage.

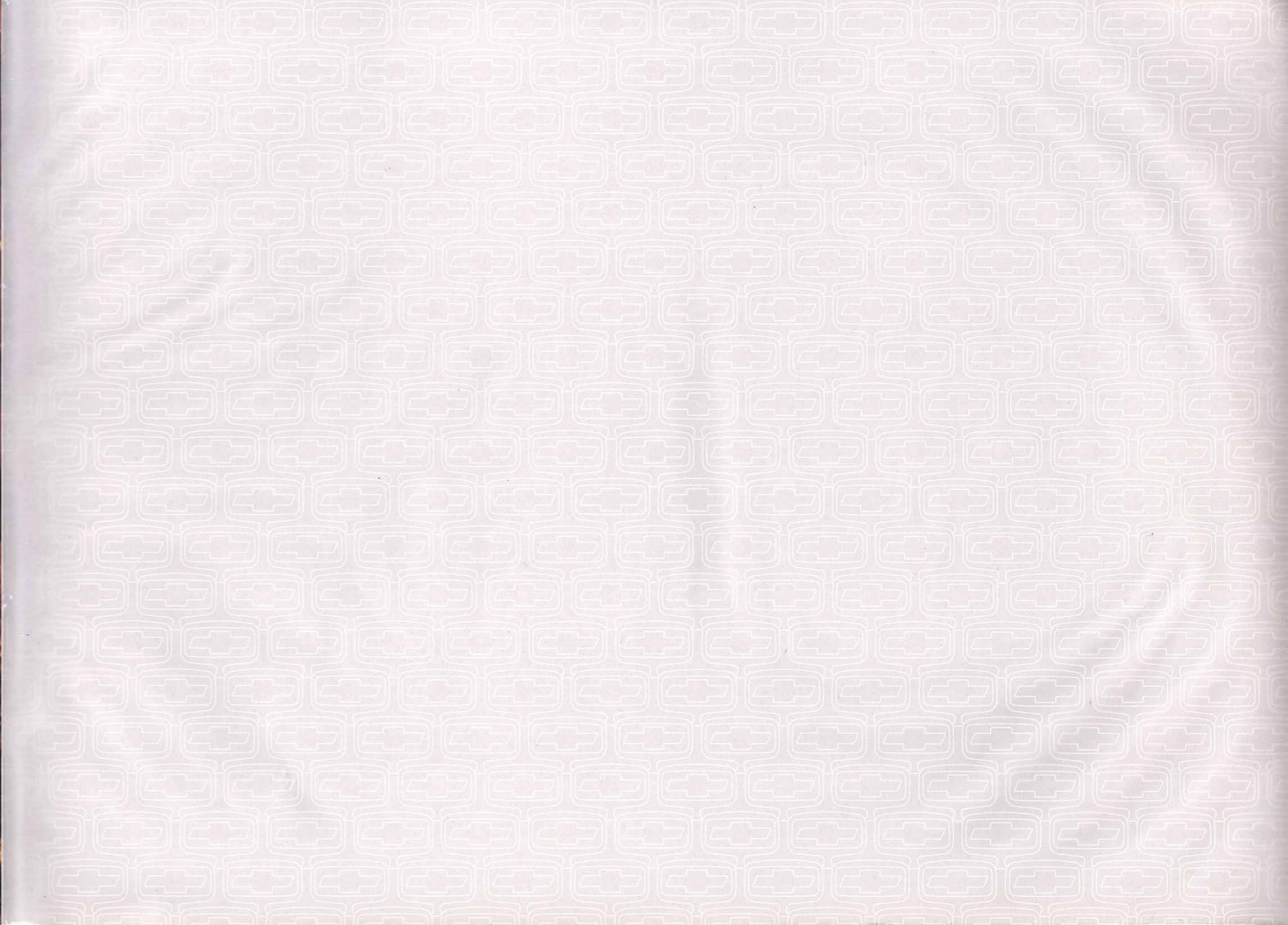
At your Chevrolet dealer, financing or leasing your new Chevrolet can be as easy as saying GMAC.

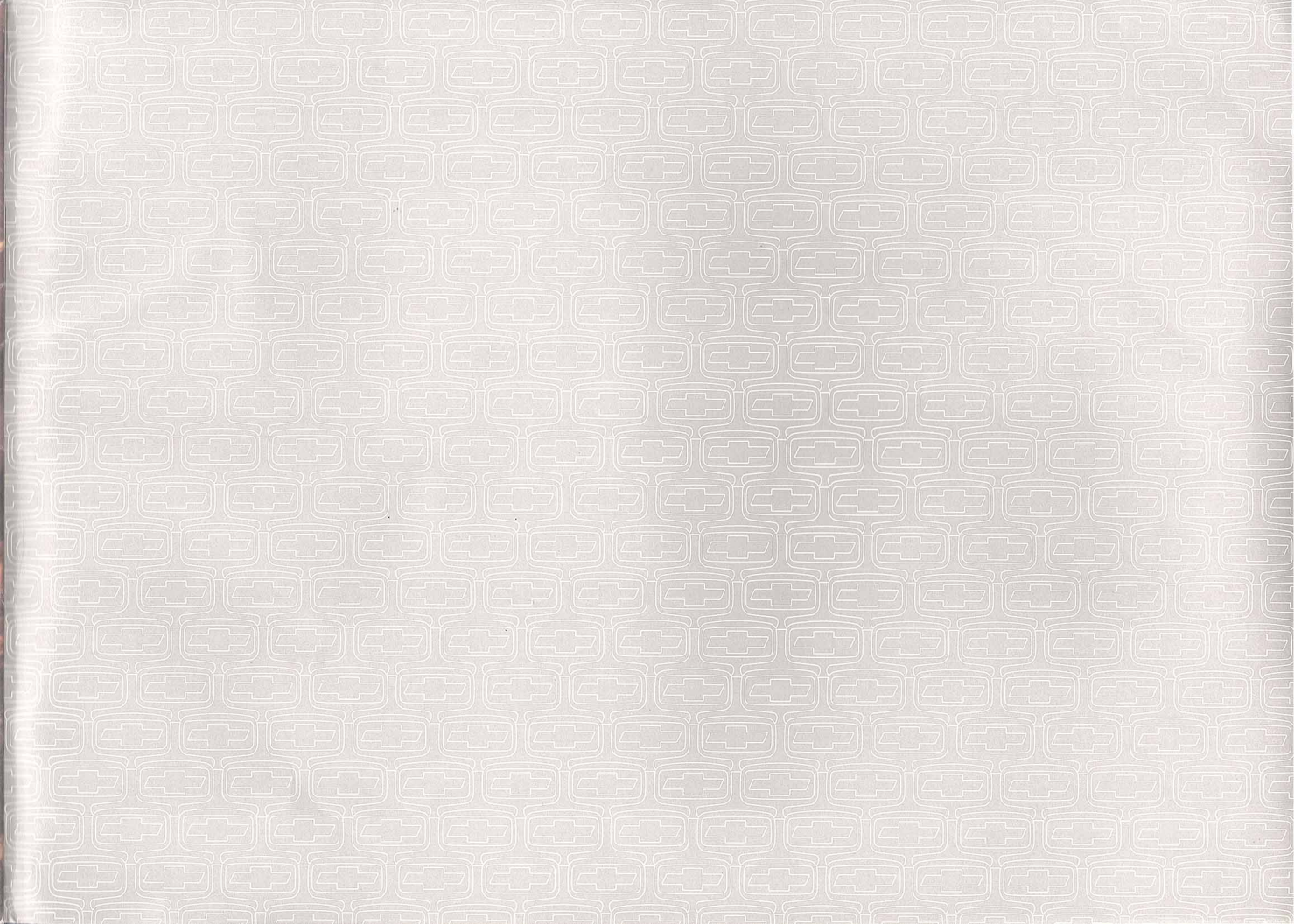


Caprice, Chevrolet, the Chevrolet emblem, GM and the GM emblem are registered trademarks and Chevy and The Heartbeat of America are trademarks of the General Motors Corp. ©1990 General Motors Corporation. All rights reserved. Dolby Noise Reduction manufactured under license from Dolby Laboratories Licensing Corporation. Dolby is a trademark of Dolby Laboratories Licensing Corporation.

Litho in U.S.A. 5028 January 1990







1 9 9 1 C H E V R O L E T
C A P R I C E

THE
Heartbeat
OF AMERICA IS WINNING.
TODAY'S CHEVROLET 



THE
Heartbeat
OF AMERICA IS WINNING.
TODAY'S CHEVROLET 