

*Civic* **VEi**  
4-DOOR SEDAN



**HONDA**

The Civic VEi sets new standards in efficiency and safety.

# VTEC-E

## Intake Valve Cut-out Mechanism

VTEC-E creates maximum efficiency through advanced technology.

The VTEC-E is Honda's answer to the problem of creating an engine with record breaking fuel economy, without sacrificing power.

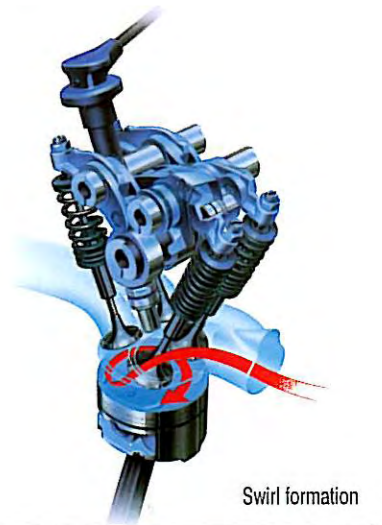
VTEC technology is used to achieve stable combustion under what had been considered extremely difficult "learn burn" conditions.

At low rpm one of the two intake valves is kept closed to generate the right combustion chamber swirl pattern for stable combustion in the ecologically friendly "learn burn" environment. In conjunction with this Honda has achieved more rapid combustion by adopting a compact combustion chamber and a linear air fuel ratio and volume fed by the PGM-FI fuel injection.

These advanced VTEC engine technologies allow the Civic VEi to boast an impressive 66kW/90PS power rating while sipping fuel at the astonishing rate of just 6.0 - litres\* per 100km (city cycle).

This is a fuel consumption level far below what has been considered typical for an engine with this power rating. The VTEC-E also has significantly improved low-end torque response. Drivers will also be pleasantly surprised at the level of high-rpm power this 16 valve engine can deliver.

\*Factory R&D specification.

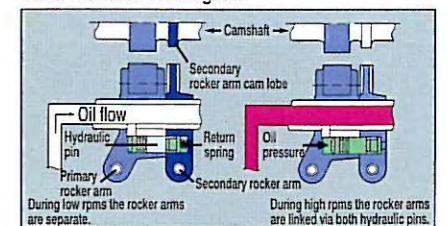


Swirl formation

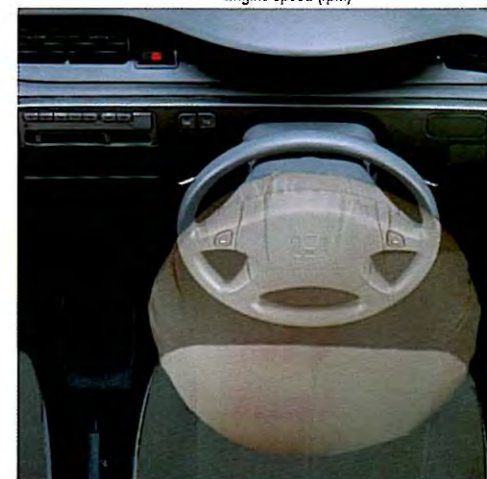
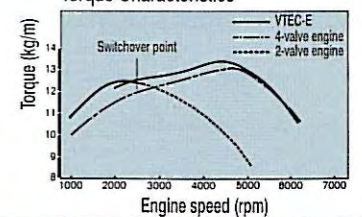
Maximum Power 66kW (90PS)/5500min<sup>-1</sup>

Maximum Torque 129 Nm (13.2kg-m)/4500<sup>-1</sup>

## VTEC-E Switchover Diagram



## Torque Characteristics



**SRS**  
AIRBAG SYSTEM



Overseas model depicted above.

# SRS

AIRBAG SYSTEM

## Supplemental Restraint System.

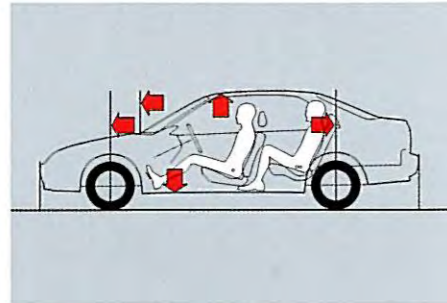
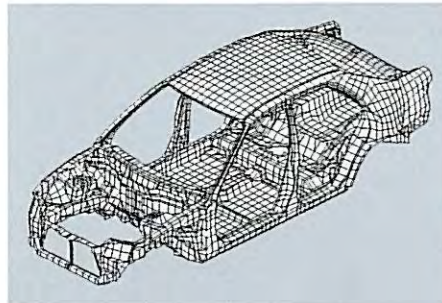
The Civic VEi offers for the first time in the compact car class the safety of a standard SRS Airbag. The airbag made of nylon fabric and coated on the inside with rubber is installed in the middle of the steering wheel.

Once the impact sensors detect a frontal impact, the airbag is deployed, inflated and deflated in one tenth of a second, absorbing the shock in the blink of an eye.

The reliability of the SRS system is crucial. As technologically advanced as the rest of the car, the airbag has a reliability rating of 99.9999% based on NASA engineering standards.



## The Civic VEi makes no compromises in handling, comfort or safety.



R&D Test vehicle.

### Superior ride comfort with excellent handling.

The Civic handles like an extension of the driver's senses, while remaining comfortable even on long trips. The key to this unique combination is Honda's 4-wheel double wishbone suspension and rigid body. It provides a comfortable ride that is soft enough to smooth out the bumps, yet firm enough to ensure ease of manoeuvrability. This suspension is also sporty in character, so the Civic responds accurately to the driver's commands.

### Enhanced body rigidity improves safety.

In building the Civic, each part of the frame structure was designed to improve rigidity and strength. The Civic's impact-dissipating crush zones channel collision energy away from occupant areas. In addition the side sill cross section has been enlarged to improve rigidity, the door locks have been strengthened and for protection against side impact, reinforcing beams have been installed in the side doors.

### A spacious interior inside a compact body.

Honda engineers created more interior space by moving the front suspension far to the outside and wheels to the four corners. The seats are wide, richly padded and provide plenty of support. Passengers also have more leg, knee and head room than ever before.

### A new standard of environmental compatibility.

Honda is building on its reputation for environmentally responsible motor vehicle design and advances aren't being restricted merely to the efficient use of fuel. The Civic range is manufactured in unique ways that take a wide range of environmental issues into consideration. Resources that are limited are used effectively. Unnecessary consumption of materials and waste are being reduced. Recyclable materials are being put to greater use. The bumpers on Civic are made of recyclable, rust-proof polypropylene. Lamps, connectors and decorative tapes have been eliminated making them easier to replace and recycle. All resin based parts are labelled with a content list to further aid in recycling.

SPECIFICATIONS	CIVIC VEi
Engine	1.5 litre aluminium alloy
Configuration	In line 4 cyl
Displacement (cc)	1493
Maximum output (kW/PS @ rpm)	66/90 @ 5500
Maximum torque (Nm / kg/m @ rpm)	129/13.2 @ 4500
Compression ratio	9.3:1
Valve train	SOHC 16 valve VTEC-E
PGM-FI programmed fuel injection	Sequential multi-point
PGM-IG programmed ignition	Digital
<b>DRIVE TRAIN</b>	
Type	Front wheel drive
Manual transmission	5-speed
<b>BODY / SUSPENSION / CHASSIS</b>	
Body type	Rigid monocoque
Suspension	4-wheel double wishbone
Gas-pressurised shock absorbers	Front and rear
Stabiliser bars	Front
Rack and pinion steering	Power assisted
Turning circle (m)	10
Servo-assisted disc brakes	Front
Servo-assisted drum brakes	Rear
Wheels	Steel 14 x 5J
Tyres	175/65 R14 81H
<b>EXTERIOR DIMENSIONS</b>	
Wheelbase (mm)	2620
Length (mm)	4395
Height (mm)	1375
Width (mm)	1695
Track (mm, front/rear)	1475/1465
Ground clearance laden (mm)	105
Kerb weight (manual) (kg)	1007
<b>FUEL</b>	
Fuel tank capacity (litres)	45
Fuel required (RON)	91 or higher
<b>FEATURES AND STANDARD EQUIPMENT</b>	
<b>EXTERIOR FEATURES</b>	
Power door mirrors	Body coloured
Halogen headlights	•
Impact-absorbing bumpers	•
Front wiper/washer (2-speed intermittent)	•

Rear window demister	•
Centre high mount stop light	•
<b>INTERIOR FEATURES</b>	
SRS - airbag system	Driver
Power windows	•
Central locking	•
AM/FM radio, stereo cassette player	2-speaker
Seat trim	Tricot
Tilt-adjustable steering column	•
Fully reclining front bucket seats	•
Adjustable front head restraints	•
Front door pockets	•
Fold-down rear seat back	•
Coin pocket	•
Drivers footrest	•
Passenger grab handles - front x 1, rear x 2	•
Coat hanger hook	•
Tachometer	•
Low-fuel warning light	•
Headlights-on reminder	•
Vanity mirror	•
Digital clock	•
Cigarette lighter and ashtray	•
Full flow heater and ventilation system	•
Remote boot and fuel lid release	•
Child-proof rear door locks	•

• designates present on model

Note: The Specifications and Major Features listed herein are accurate as at the date of printing (February 1993/1993 YM), however, Honda Motor Co. Ltd. and Honda Australia Pty. Ltd. reserve the right to change or modify Specifications and Major Features at any time without prior notice. Specifications may also vary in some States; please check current specifications with your Authorised Honda Automobile Dealer before purchase. Due to ordering, shipping and freight factors, some colour and model availabilities may vary from time to time. Check with your Honda dealer for current information on availability. LINTAS M HOC 4439 / 10M / 93YM



Honda Motorvehicles, Honda Australia Pty. Ltd. A.C.N. 004 759 611  
 Lot 95, Sharps Road, Tullamarine, Victoria, 3043. Melbourne (03) 285 5555,  
 Perth (09) 458 9811, Brisbane (07) 368 3744, Sydney (02) 748 6511.

 **HONDA**

