

HONDA ACCORD



Honda Motor Vehicles, Honda Australia Pty. Ltd. A.C.N. 004 759 611.
Lot 95, Sharps Road, Tullamarine, Victoria, 3043. Melbourne (03) 285 5555.
Brisbane (07) 368 3744. Sydney (02) 748 6511. Perth (09) 481 5166.



Challenge for dynamic and pleasurable performance.

The Honda NSX is without question the ultimate expression of the Honda philosophy. It has been called "The best sports car the world has ever produced. Any time. Any place. Any price."* As advanced as it may be, the NSX is not practical for everyone's automotive needs. At Honda, we had a dream that the ability to carry more than two people should never deprive the driver of the spirit and enjoyment of driving a high performance road vehicle.

The idea that every car we produce should provide an exciting driving experience has its origins in Formula One racing. The reason, we believe, is that competition brings out the best in the people who compete, both behind the wheel and at the drawing board. It's the quickest road to technological innovation, and we believe, the ultimate automotive laboratory.

As a company, we've won more than our share of Championships on the gruelling Formula One circuit. But more importantly our engineers have brought home a wealth of knowledge on engine control systems, low-friction materials and a host of other engineering breakthroughs.

Ultimately, this knowledge led to the development of technologies such as Programmed Fuel Injection (PGM-FI), the VTEC system and Honda's 4-wheel double-wishbone suspension. As a result, Honda motor vehicles are powerful, reliable, and among the safest on the road. And, as one would expect from an enthusiastic group of racing-oriented engineers, they've also made them a pleasure to drive. * Motor Trend, Sept. 1990.



.....

Rather than start from scratch, we started with you.

Honda's quest to deliver total driving pleasure begins with human-centred engineering. Our approach to space efficiency stresses emotional over mechanical concerns, providing drivers with exceptional utility and style.

The Accord embodies this philosophy like no other car. Witness the airy, forward-shifted cabin, the muscular silhouette with its broad shoulders for extra elbow room, and the

compact front-drive platform that minimises space for the engine while maximising space for passengers.

All these elements unite in a totally satisfying blend of sportiness and spaciousness – a triumph of intelligent packaging that underscores Honda's total commitment to providing the very best driving experience possible.



.....

There is simply no short cut to dynamic performance.

When it comes to power and handling, Honda is dedicated to providing dynamic performance of the most gratifying kind, which translates into smooth, sporty response ever faithful to the driver's commands. This objective is pursued through meticulous attention to efficiency and innovation. Because nothing less can extract high-performance handling from compact suspensions or large-engine power from small, naturally aspirated engines - the very same

combination of performance, economy and compactness that led Honda to unprecedented success in Formula One racing. The Accord realises this Honda pledge to the maximum. Through such trademarks of innovation and efficiency as a 4-valve-per cylinder design, VTEC* and a 4-wheel double wishbone suspension that work in unison, exciting all-round dynamic response is achieved.

*Variable Valve Timing and Lift Electronic Control System.



.....

A commitment to safety as solid as our cars.

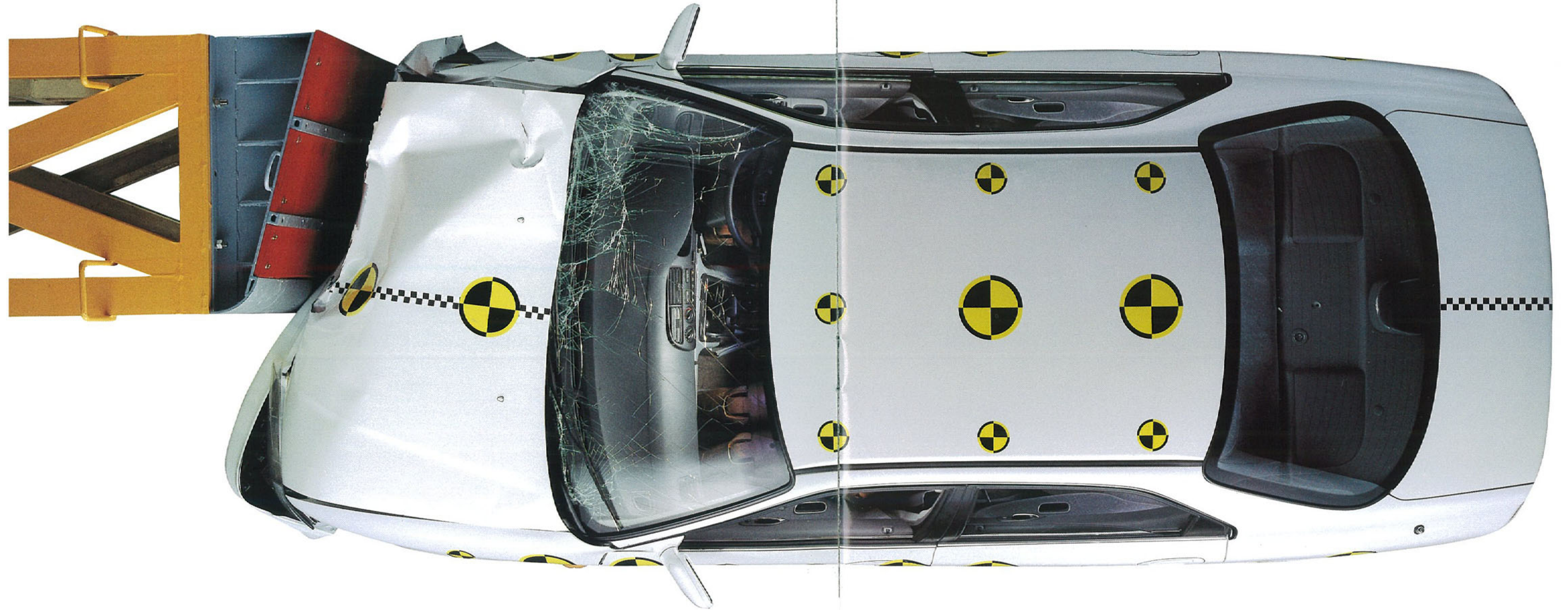
Honda's concern for the welfare of drivers and passengers is amply demonstrated by the responsible engineering of our motor vehicles.

Safety is integrated into every aspect of their design to ensure that Honda customers are well protected on the road. Our commitment extends from active to passive safety measures.

Our motor vehicles provide unobstructed visibility and responsive controls to help avoid accidents in the first place. Honda construction

absorbs the energy of impact; and standard features, such as the Honda SRS airbag, protect the driver.

The Accord builds on Honda's tradition of safety with one of the most comprehensively tested, crashworthy bodies ever to roll off our production line. It surpasses every one of the world's most stringent government safety standards to provide not only protection, but satisfying peace of mind.



Sheer exhilaration and economy squeezed from every drop of fuel.

The Accord stirs your enthusiasm for driving with remarkable SOHC engines which are both generous with power and thrifty with fuel. These highly efficient powerplants feature the performance advantages of a race-inspired, 4-valve-per-cylinder design, as well as the compactness of an innovative SOHC configuration that drives all 16 valves with only one camshaft – an outstanding combination that matches the power potential of a DOHC.

Through Honda's second-order balancer shaft system, which cancels annoying vibration, these powerplants exhibit the smooth response you'd expect from a luxurious sports sedan. They also deliver optimised middle-range power by means of fine exhaust/intake timing and a unique torque-up resonator that, as its name implies, raises torque.

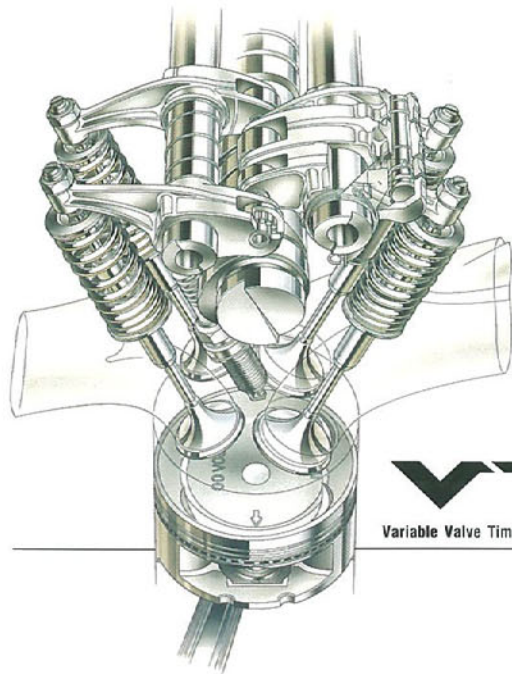
Honda significantly reduced weight and friction by casting the cylinder blocks and heads in aluminium alloy and meticulously refining

engine components. Then came PGM-FI (Honda's Programmed Fuel Injection), a proven weapon in Honda's war against inefficiency. PGM-FI monitors engine variables to determine exact fuel needs so that each cylinder can extract more power and economy from every drop of fuel.

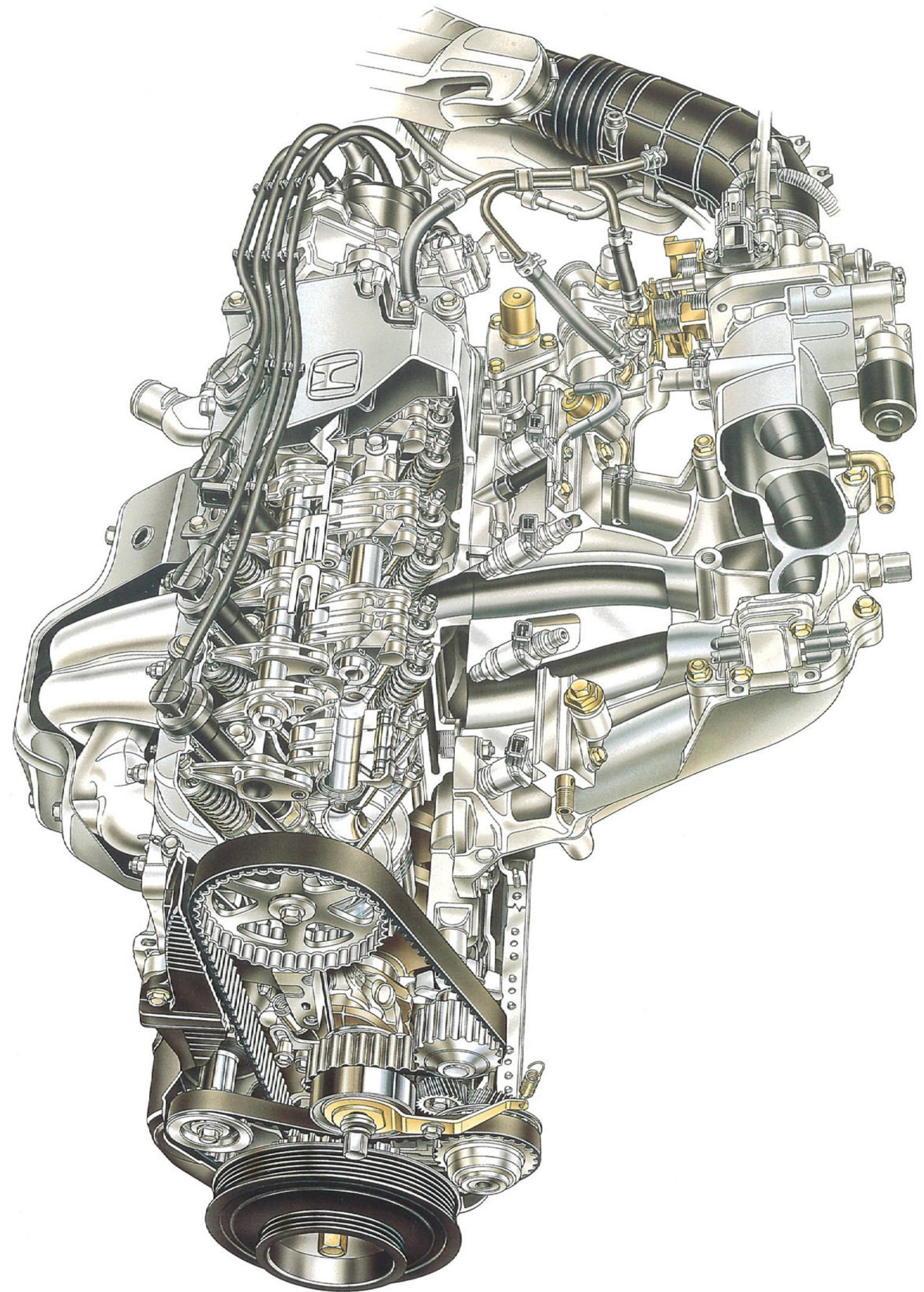
The final result is an engine that develops smooth continuous power from idle to red line.

The VTi and VTi-S models are powered by Honda's revolutionary 2.2 litre SOHC VTEC engine. This extraordinary technology improves power and fuel economy. Unlike conventional engine technologies, VTEC provides two different settings for valve timing and lift. One setting optimises low-rpm torque, while the other optimises high-rpm power – resulting in power that rivals a 2.5-litre engine! Conversely, VTEC nearly closes one intake valve during low rpm to create a swirl effect, which increases fuel economy to that of a 1.8-litre engine!

Combining powerful response with high fuel economy, Honda's remarkable 2.2-litre SOHC VTEC powerplant delivers unparalleled pleasure to enthusiasts and environmentalists alike.



VTEC
Variable Valve Timing and Lift Electronic Control System



Predictable handling heightens your confidence and control on the road.

The Accord's exceptional handling was inspired by Honda's racing heritage and NSX development. Both sharpened our expertise in cornering precision and high-speed stability.

With this knowledge Honda forged the Accord body into a rigid foundation for chassis components, keeping it wide and close to the ground for better road handling.

Fully independent, double wishbone suspensions are mounted at each of the four wheels and their geometries are finely tuned to maintain wheel perpendicularity for stability around bumpy, twisty turns.

Premium HPV dampers are mounted to cradle passengers in comfort, ensuring their ease over the roughest roads.

Equally important, Honda braced key suspension components to make steering response as steady and predictable as possible. And the steering wheel is made extremely solid without detracting from its ability to sketch accurate images of the asphalt below - to keep you in touch with the road and help you make all the right moves.

Handling was rigorously tested in actual and simulated conditions all over the world. On hairpin curves, high-speed freeways and winding mountain lanes. To help you stay in control and comfort whatever the road throws your way.

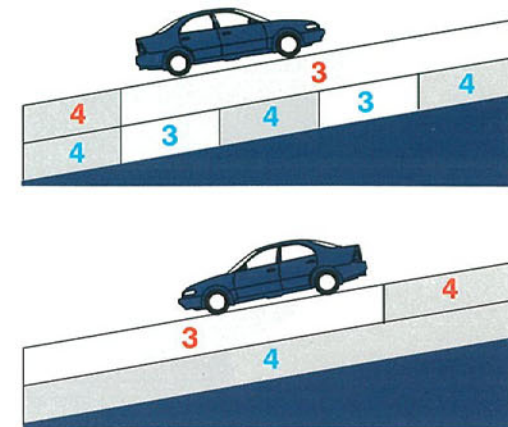
The Accord further facilitates handling through exceptionally smooth power delivery, courtesy of a smooth, 4-speed,

7-position automatic transmission that is designed to run silently and with minimum shift shock and gear noise.

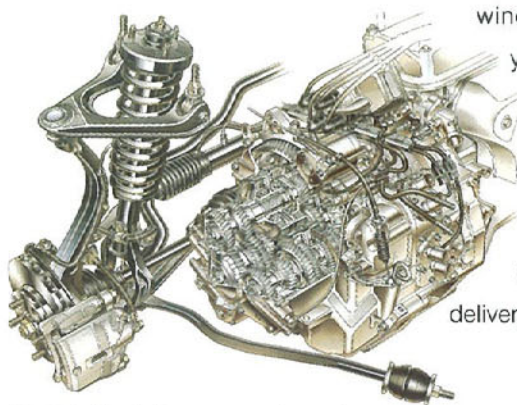
The transmission's Grade Logic Control system uses special sensors and sophisticated computer programming to identify different driving situations. It then reprograms the gear shift points for optimum performance and efficiency.

For example, when driving up steep hills conventional automatic transmissions continually hunt between fourth and third gear. Grade Logic selects a computer program that keeps the Accord in third gear. Grade Logic will also sense when the Accord is driving down a steep grade and downshift from fourth to third gear, to use engine braking and improve disc-brake efficiency.

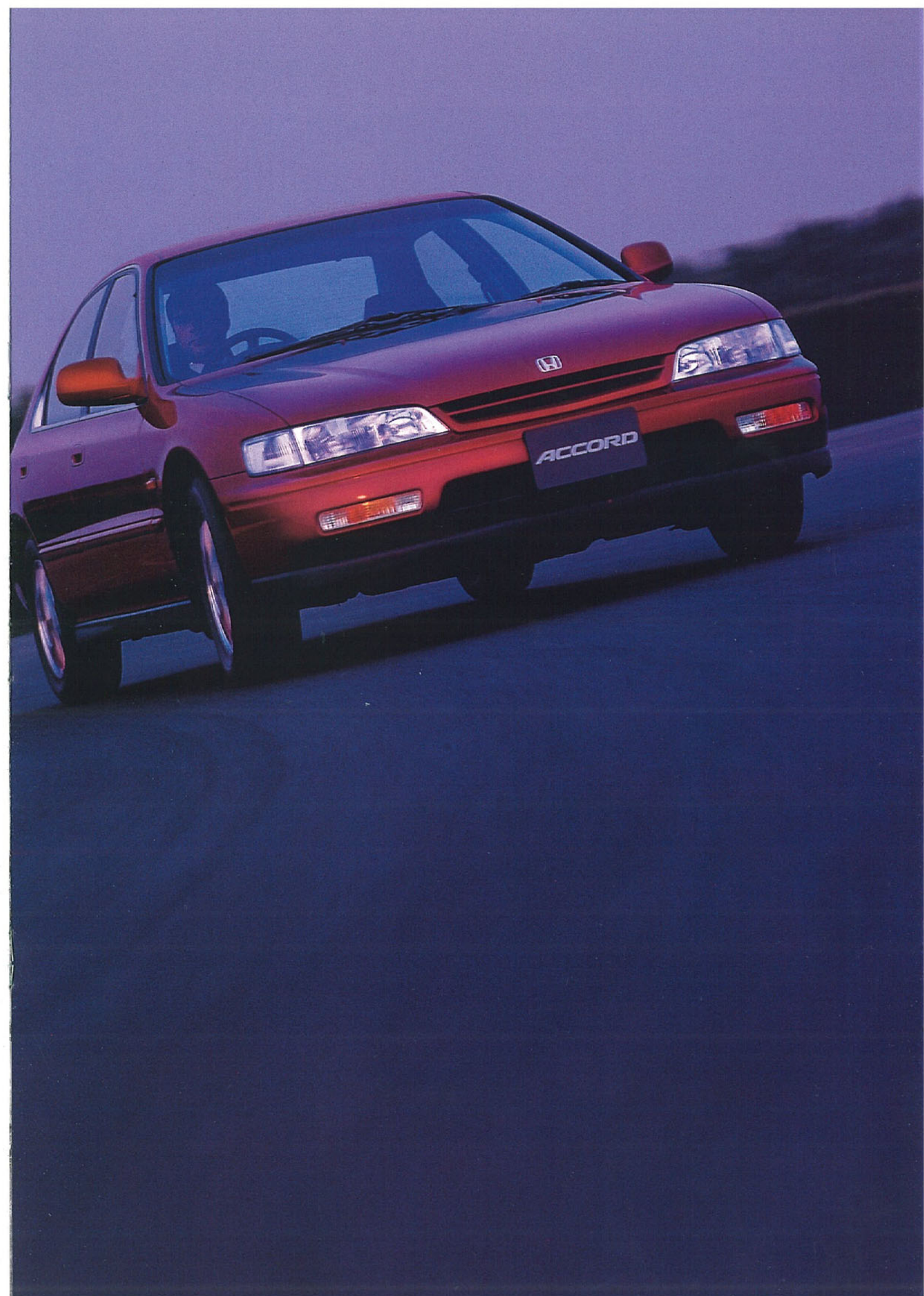
Grade Logic will detect the hard braking and rapid acceleration of stop-and-go city driving or a winding road. It then downshifts the Accord transmission early for effective engine braking, then delays the upshift for smoother acceleration.



■ Grade Logic Control System
■ Conventional Automatic Transmission



Front double wishbone suspension and automatic transmission.

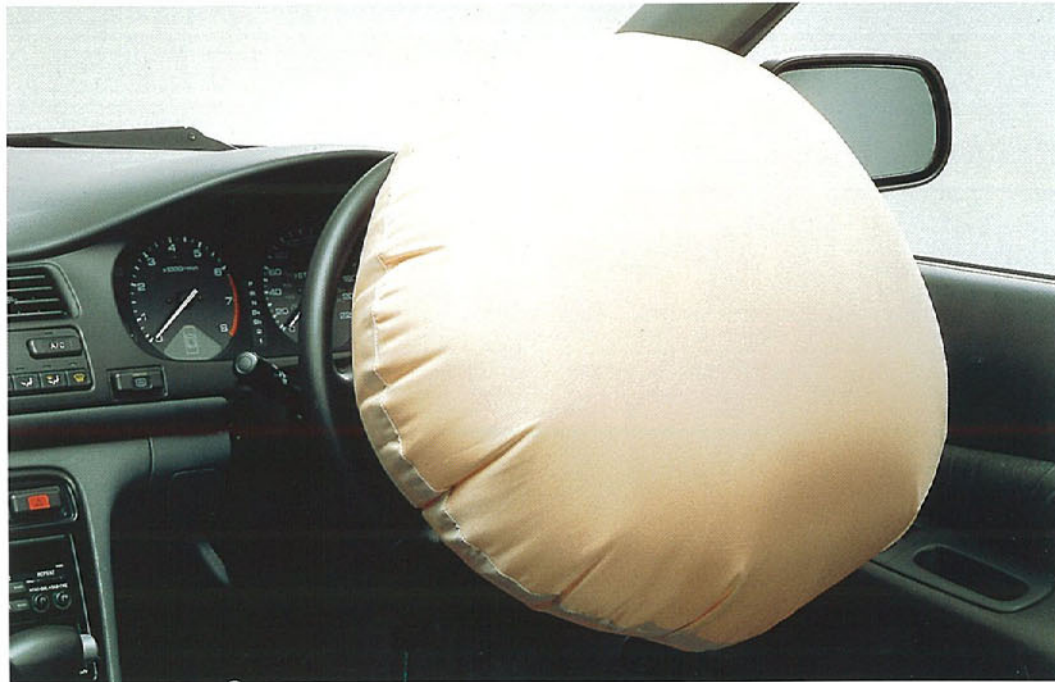


All-round protection inspires a fully-justified sense of reassurance.

You'll drive the Accord with peace of mind, knowing that you and your passengers are surrounded by a comprehensive array of safety measures.

Responsive power and handling provide the performance you need to pull through emergency manoeuvres safely, in fair weather or foul, thanks to the controlled deceleration of 4-wheel disc brakes.

The sleek low bonnet and forward cabin give excellent visibility. Inside, the comprehensive



dials and dashboard warning systems are easily monitored. All controls fall within easy reach.

Should a collision become unavoidable, the Accord protects you with a highly rigid body that was extensively reinforced on the basis of crash-testing from every side. It surpasses every one of the world's most rigorous government safety standards.

Front and rear crumple zones absorb and dissipate energy during frontal or rear-end collisions. While outer door panels crumple to deter puncturing of the interior, and full-width door beams absorb much of the energy of side impact.

Having effectively strengthened the body, Honda took extra precautions to cushion the occupants. Thick wraparound padding clads the dashboard and doors, and shock-absorbing door pads protect shoulders, hips and knees.

Complementing these measures in every Accord model is Honda's Supplemental Restraint System (SRS) airbag. Hidden in the steering wheel hub, the SRS airbag is triggered by electronic impact sensors. It inflates instantly with harmless nitrogen gas, cushioning the head and upper body of the driver and preventing contact with the steering wheel.

Remarkably, inflation, protection and deflation occurs in just a fraction of a second.

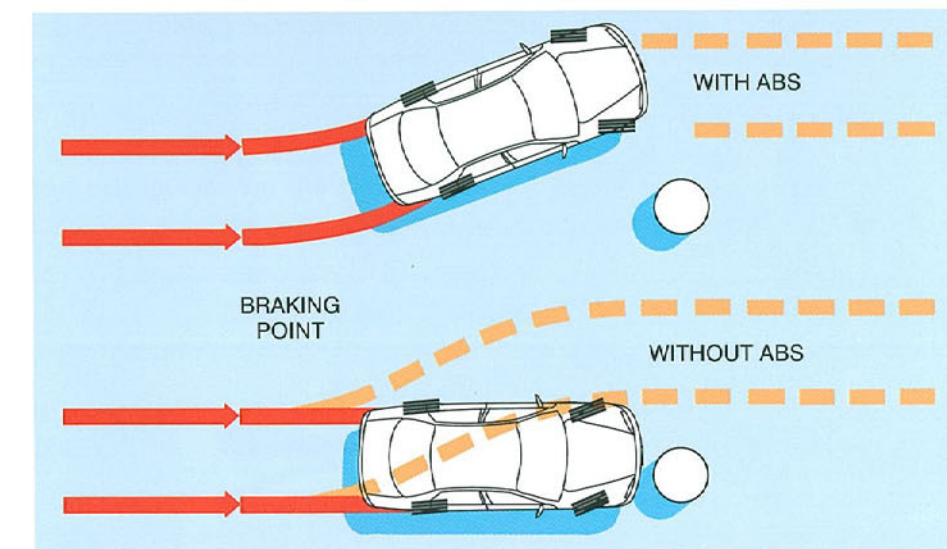
The Accord's seatbelt system features adjustable shoulder anchorages and seatbelt webbing clamps. When activated these devices clamp onto the front seat belts – holding the occupants safely in their seat.

The interior is fire-retardant and the fuel tank rollover valve automatically cuts the fuel supply should the Accord rollover.

Anti-lock brakes (ABS), standard on the VTI-S model, allow the driver to retain steering control during hard braking. This can be especially useful when braking on wet or slippery surfaces, such as rain-slicked roads, or when braking and turning at the same time.

ABS uses sensors to monitor wheel speed and an electronic control unit (ECU) to monitor braking. When the ECU detects impending brake lock it commands the brake hydraulic system to momentarily release, then reapply, the brakes.

They are applied at up to 10 times a second. This repeated cycle maintains maximum deceleration.



A thoroughly refreshing environment of spaciousness and inviting comfort.

For your comfort the Accord provides a roomy interior, with headroom and elbow room to spare. This spaciousness is heightened by a unique two-tone colour scheme featuring cool, light-coloured material for a refreshing ambience. The dark, shoulder-height padding reduces window glare and promotes a feeling of security.

The perspective from behind the wheel is stimulating, with its commanding view of the road, facilitated by easy-to-read, low-set meters. Ergonomic controls are arranged within fingertip access to promote natural interaction between car and driver.

Which leads us to the ergonomic seat design, featuring curvaceous padding to embrace your body in exceptional comfort and rounded side and shoulder bolsters for excellent lateral support around corners.

Rear passenger leg room is very spacious thanks to the concave design in the rear of the front seats.

Further proof that the Accord interior is the perfect environment for any driver, is the inclusion of a fully automated climate control system on the Accord VTi-S.

A system so sophisticated it will maintain your ideal interior temperature by picking the proper combination of air conditioning, heating and ventilation as well as adjusting fan speed and air flow direction.

Every last detail of the interior is elegantly understated to enhance your appreciation. The closer you look the more you'll be impressed with the fine quality workmanship – a fit and finish normally reserved for more expensive motor vehicles.

For your convenience, thoughtful amenities nestle within easy reach. These include a centre armrest with a large storage compartment for a cellular phone or 12 CD's.

The adjustable steering column provides greater driver comfort in tune with many other features such as power windows, power steering and door mirrors, which serve as finishing touches to an interior that pampers and pleases.

The Accord's rear seat back folds down to provide additional cargo capacity. And coupled with refinements such as a power operated sunroof,* cruise control* and air conditioning, your journey will be that much more enjoyable.

*excludes EXi model.



Power-operated, smoked-glass sunroof*



Dual cup holder



Fold down rear seat back







Unshakeable integrity affords a silent refuge from distractions.

The Accord rewards your senses with soothing silence and the comfort of a solid ride in a fatigue-free environment that will heighten your awareness of the pleasures of driving.

Rigid construction holds everything together with a sturdiness you can feel – just open and close the doors a few times to see what we mean. The same structural integrity dampens vibration from the road, leaving the interior free of any harshness over bumps.

Honda's comprehensive approach to reducing road, engine and wind noise includes layers of sound-deadening material intelligently applied to the floor, ceiling and, indeed, throughout the passenger compartment. Hydraulic engine mounts are installed to

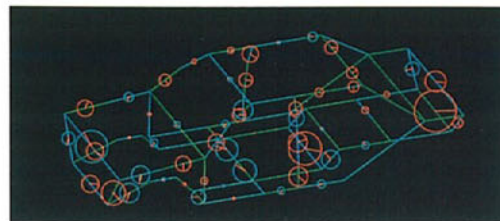
absorb low-rpm vibration. And surfaces were made as sleek as possible, resulting in an exceptionally quiet cabin under all driving conditions.

Of course, Honda in no way neglected the steering system. By reinforcing various components, Honda greatly reduced vibration and kickback, resulting in a steering feel that is extremely solid and smooth with minimum vibration. In addition, the SRS equipped Accord features a hollow steering column that further dampens vibration and noise.

These attributes combine to provide a refuge that soothes, rather than rattles, your nerves, leaving you relaxed and fully satisfied at the end of your journey.



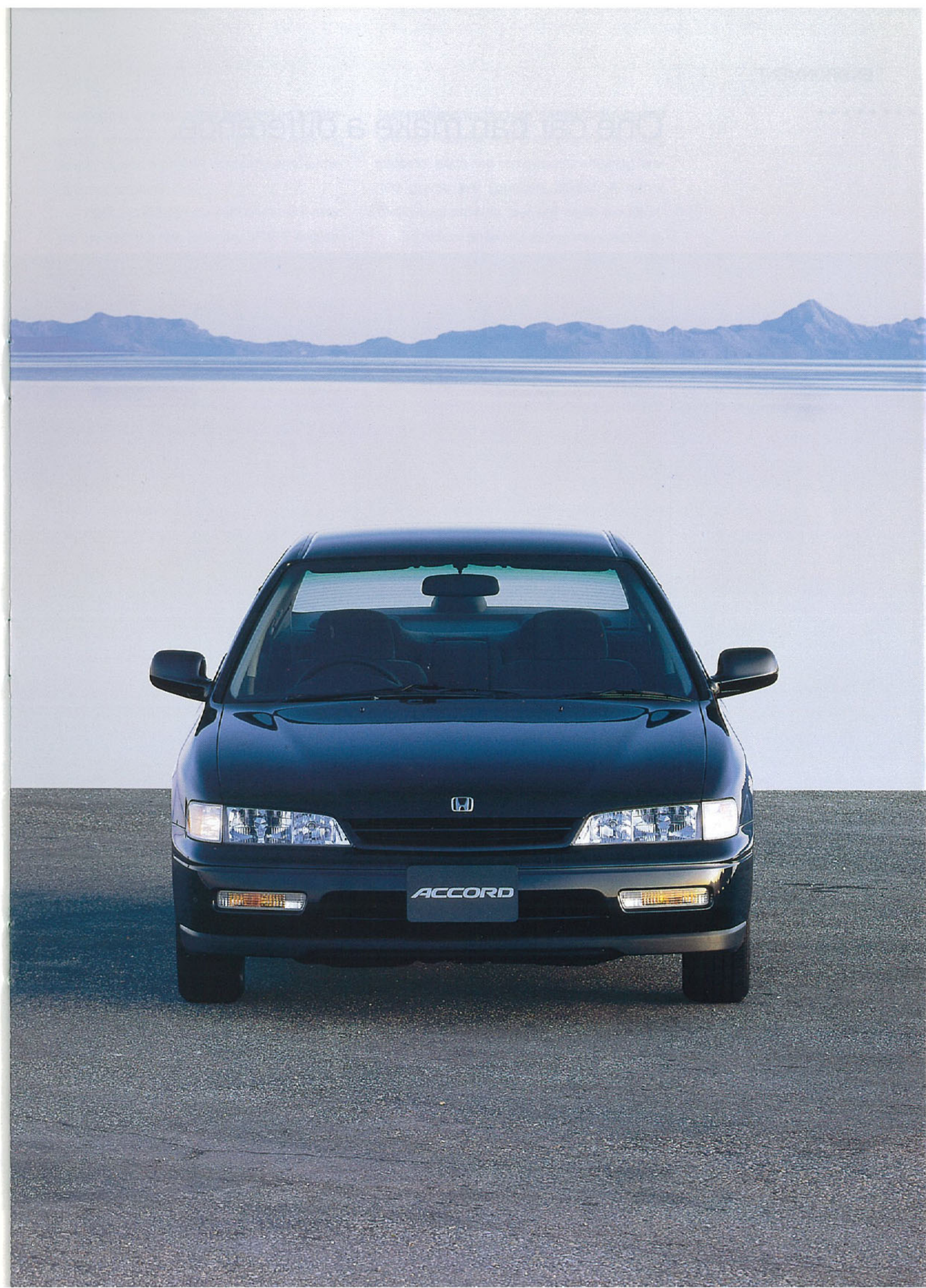
Rigid unit-body construction enhances safety and handling while also dampening noise and vibration.



Honda Dynamic Optimisation System Analysis (DOSA) pinpoints exactly where to reinforce for maximum effect.



Sophisticated computer analysis assists Honda engineers in determining the optimal body structure.



One car can make a difference.



developing an engine that featured an exceptionally efficient combustion process, yielding ample power, high fuel economy and a low-pollution exhaust.

Then, in 1989, Honda went one step further. We created the revolutionary 'VTEC' engine.

bumpers and spoilers are formed from recycled process material. And to simplify the recycling process, parts and components weighing over 100 grams are specially coded. A rather meticulous process, but well worth the effort.

To reduce pollutants during manufacturing,



Easy-to-remove bumpers and other plastic components are marked with material ID codes to simplify recycling.

The Honda commitment to building the world's finest cars doesn't end with the needs of individual owners alone, but rather with the needs of society as a whole. Therefore, our cars also reflect a strong commitment to the environment. Our efforts have been focussed on developing technological solutions that dramatically reduce pollution and natural-resource consumption.

In 1971, Honda became the world's first car manufacturer to produce an ultra-efficient low-pollution engine that met the stringent United States emission standards. Called the CVCC, it demonstrated our commitment to

The 'Variable Valve Timing and Lift Electronic Control' system that automatically adjusts valve timing and lift operation to create optimal combustion environments during either low-to-mid range or high-engine speeds.

Teamed with a 3-way catalytic converter, the VTEC system gives a much higher power output and dramatically reduced fuel consumption and emissions.

Even the Accord's air-conditioning system is environmentally friendly. It now uses a non-CFC refrigerant, so unlike conventional systems, it is less harmful to the ozone layer.

To conserve natural resources, recyclable

Honda has eliminated the use of CFCs.

Honda is also responding to the environment with the development of an alternative energy car. Currently, electric and solar energy offer the greatest potential for passenger-car application and progress is being made towards the eventual debut of Honda production models.



A commitment to satisfaction.



At Honda, building the world's finest cars is just as important to us, as providing the world's finest after sales service. The entire Honda Dealer network is dedicated to keeping your new Honda at peak performance, so it gives you years of pleasure. Honda Dealer staff and technicians are factory trained and keep up to date with the most advanced technologies by attending an ongoing series of seminars and training courses. To ensure only the highest standards are maintained, we have strict requirements of a person or company wishing to open a Honda Dealership.

Every Honda Dealer maintains a comprehensive inventory of Genuine Parts and access to a central warehouse via the Hondanet

computerised order/supply system. Genuine Parts can be delivered anywhere in Australia overnight. Nobody can service and tune your Honda like we can. Our cars have such precise engineering that we use specialised hi-tech equipment, unique to Honda. To maintain the value of your car it should be serviced regularly. Always insist on Honda Genuine Parts.

Every new Honda motor vehicle comes with our 3-year, 80,000km warranty. This includes a 3-year surface corrosion warranty and a 6-year rust-perforation warranty. We are committed to providing prompt, courteous service in a professional manner at the time of purchase and throughout your ownership.



The specifications and major features listed herein are accurate as at the date of printing (October 1994/1995/96), however Honda Motor Co., Ltd. and Honda Australia Pty. Ltd. reserve the right to change or modify specifications and major features at any time without prior notice. Specifications may also vary in some States; please check current specifications with your authorised Honda Dealer before purchase. Due to ordering, shipping and freight factors, some colour and model availabilities may vary from time to time. Check with your Honda Dealer for current information on availability.