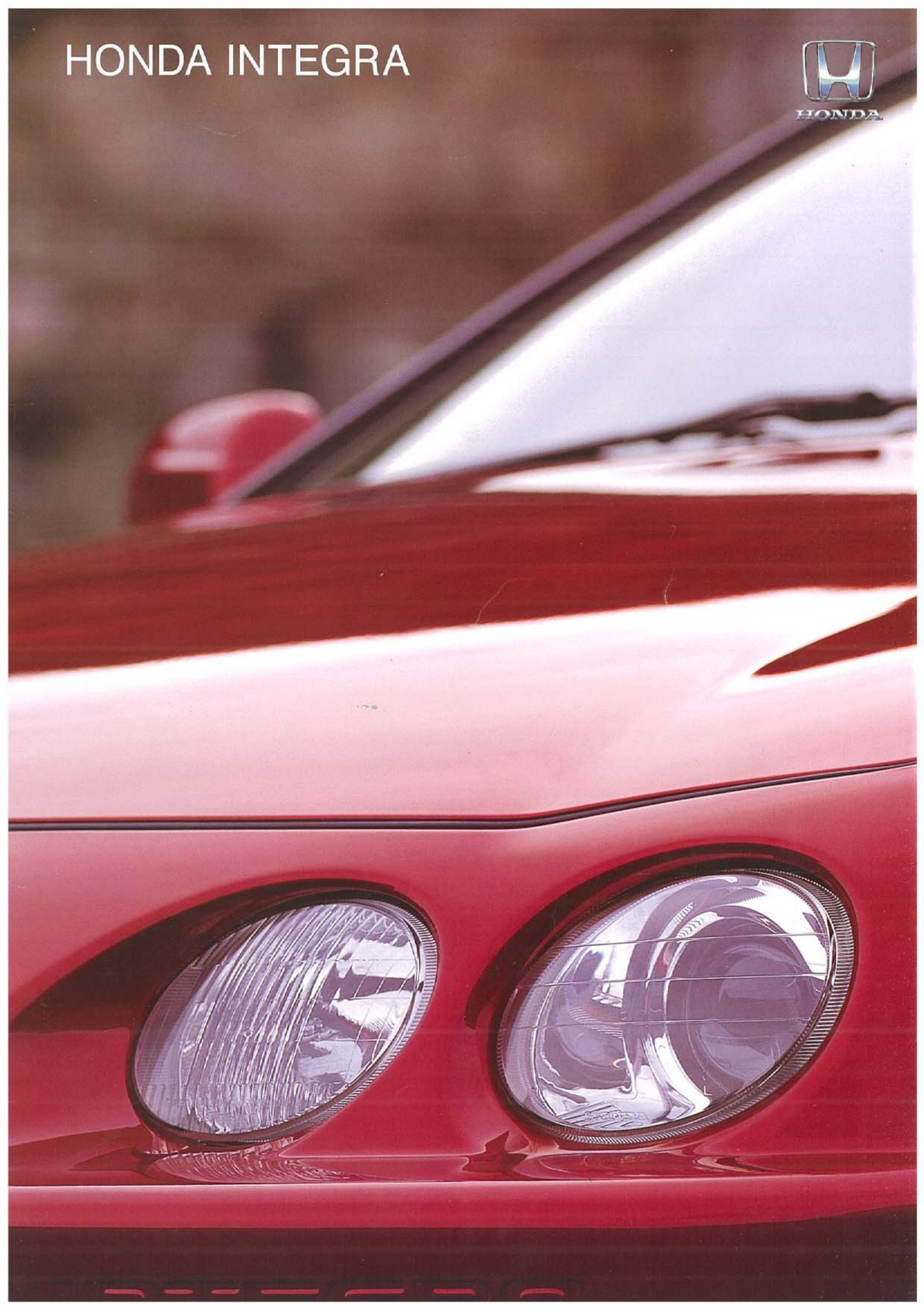
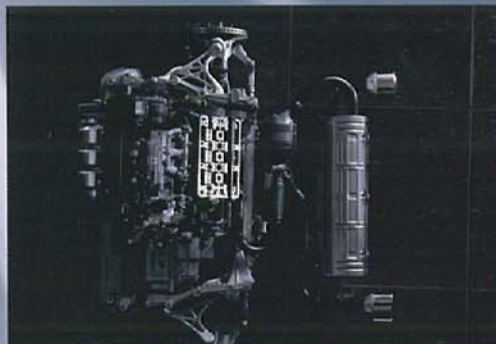
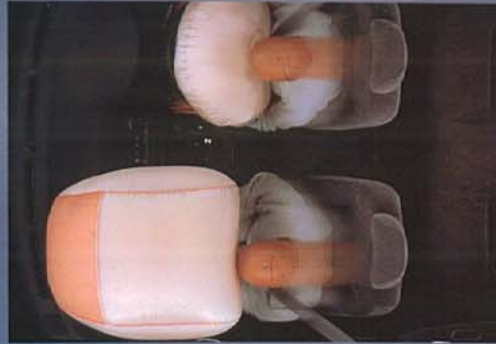


HONDA INTEGRA







Everything we do is driven by the single-minded vision of our founder, Soichiro Honda: "...to challenge conventional wisdom and create new, more useful technology."

This means utilising technology to create safer, more efficient and more user-friendly vehicles, and is the basis for what we call Human-Centred Engineering.

Undoubtedly motor racing provides the quickest road to achieving such innovation, bringing out the best in those behind the drawing board as much as those behind the wheel. That's why Honda contested 186 Formula One Grands Prix, proudly achieving 71 victories and a plethora of engineering advances.

Today this research and development

successfully continues unabated in Indy racing.

It was as a direct result of our Formula One program that Honda created the NSX.

NSX pioneered many beneficial advances - including VTEC - which are now endowed to the range. But of course nothing is more important to our future than engineering that addresses the needs of our environment.

Honda continues to develop new solutions that deliver a better quality of life for not just the driver but all, including the successful development of alternate energy vehicles.

As a result of challenging the conventional, every Honda is more powerful, reliable, safe and responsible. Yet best of all, it is also more pleasurable to drive.



## The integration of driver and machine.

In keeping with its rich heritage, the Honda Integra embodies a sporting nature which will reward you in any driving situation, whether you're negotiating the concrete jungle or exploring your favourite highway.

The breathtaking, Formula One inspired engine performance will translate your every command into a dazzling surge of power.

And its stylishly sleek, distinctive exterior lines and superior handling further hasten the realisation that the Integra has been elevated

far beyond the one dimensional realms of most sports cars.

Instead you'll discover a considerably more well rounded sports car personality than previously experienced, as the Honda Integra invites you to revel in a truly unique sports car driving sensation.

A driving sensation that can be likened to that of a joyous union, a complete feeling of oneness, where driver and machine come together in complete harmony.





## The integration of high performance and high fuel efficiency.



If you're a driving enthusiast who has the insight to go beyond mere displacement when judging the capability of an engine, you'll undoubtedly find the Integra story an intriguing one. Because by giving you access to smooth acceleration over the entire rpm range, this motor vehicle establishes new reference points in determining true value within the sports car category.

At the heart of the Integra GSi is a 1.8 litre DOHC engine that delivers a much improved response by generating more useable torque and power when you need it most - at an earlier point in the power band.

This engineering achievement can be traced to features such as a straighter intake

port and an axial flow air filter. As an integral member of the Honda sports family, the Integra VTI-R is powered by a 1.8 litre DOHC powerplant with a four-valve-per-cylinder configuration and Honda's own Variable Valve Timing and Lift Electronic Control system (VTEC).



### LADIES AND GENTLEMEN, START YOUR ENGINES.

The Integra VTI-R's performance is strikingly linear at all engine speeds. And with breathtaking acceleration assured up to 8,000 rpm thanks to Honda's high-revving technology, the Integra VTI-R exhibits a lively, aggressive character.

You benefit too, from low to mid speed

range torque by virtue of a long stroke design, a variable intake manifold with straighter intake ports, and a refined exhaust system.

A high degree of fuel economy has been a primary goal of Honda engine technology from the very beginning.

The Integra VTEC engine reflects a continuing dedication to this objective, and adds a few new twists in order to ensure true sports car performance while conserving fuel. This latest combustion technology optimises both fuel efficiency and power by generating a more rapid and complete combustion process,

trap a layer of oil and hold it far better than conventional bearing surfaces.

As a result, it reduces friction and enhances reliability. Other refinements enhancing reliability include a highly rigid crankshaft. The crankshaft web thickness has been increased with no increase in overall engine length.

This increased width imparts greater rigidity and minimises crankshaft whip and other problems usually associated with sustained high-speed operation.

thereby extracting more of the heat potential of the air/fuel mixture.



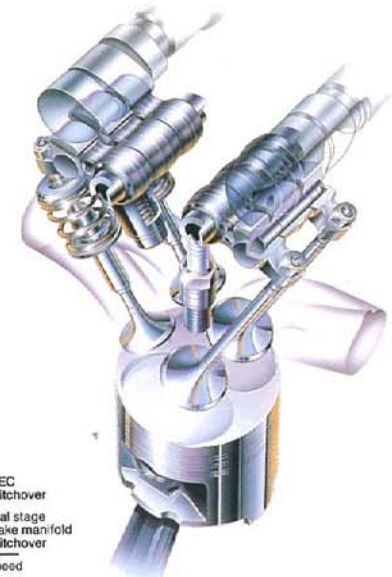
### THE RELIABILITY CHALLENGE HAS BEEN ANSWERED

For decades motor vehicle companies have been trying to build a reliable engine with a high-revving ability and a long stroke. At last, Honda has a solution.

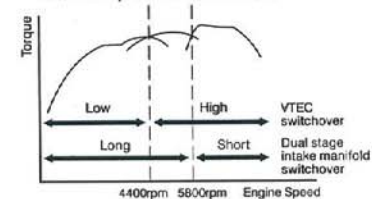
Drawing on its Formula One racing experience, Honda employs a surface-orientated crystal bearing material in the Integra VTI-R engine. Unlike the surface of a conventional bearing material, it has molecules shaped like a pyramid. This pyramid shape has the ability to

### DOHC VTEC

Honda's Variable Valve Timing and Lift Electronic Control system (VTEC) solves the age-old trade-off between tuning an engine for either high-end output or low-end torque. With the VTEC system at work, you can experience the best of both worlds.



VTEC/dual stage intake manifold performance curves









The integration of strength and stability.



A highly rigid body plays a key role in determining a motor vehicle's sporting nature. Naturally, Honda utilised the latest computer modelling and Finite Element Analysis techniques to enhance the rigidity of the Integra in every area.

These steps have resulted in straighter, sturdier components in the underframe structure, strategically positioned reinforcements wherever load is brought to bear upon the body, and tighter tolerances throughout the Integra's structural design. To give you an even greater sense of assurance when you take the wheel, this commitment to rigidity has also been carried through to key driver controls.

For example, important refinements to the steering column have reduced vibration and

enhanced the feeling of rigidity while cornering. With the Integra's 5-speed gearbox, shifting is short and solid for greater precision. While a rigid brake calliper and short pedal stroke also give you a feeling of superior control.



**SOLID, RESPONSIVE HANDLING.**

In keeping with the doctrine set down by its predecessors, the Integra incorporates fully independent, 4-wheel double wishbone suspension for a superb combination of performance, handling and an excellent ride quality.

This all translates into genuine comfort to ease the strains of everyday driving, with brilliant traction and consistent, stable behaviour

to meet the demands of both road and driver. New components include a ball-jointed front stabiliser bar to help eliminate delay and ensure a quicker response.

While a performance rod stiffens the lower subframe for enhanced strength. The Integra VTi-R additionally employs a tower bar that links the tops of the front struts for greater stability and precision, while its suspension system is teamed with wide 15 inch wheels and low profile tyres, also specially developed to provide excellent grip and control.

By using an array of sensors and an extremely intelligent Electronic Control Module (ECM), this system can actually determine whether the Integra is travelling up or downhill. On level ground the Grade Logic Control varies shifting to improve acceleration and deceleration.

Uphill, it delays upshifting to reduce unwanted back and forth hunting for gears, while also improving acceleration. Downhill, it hastens shifting to lower gears, for improved deceleration. Reducing this uncomfortable jumping between gears creates a more pleasant driving experience and adds a further level of refinement.



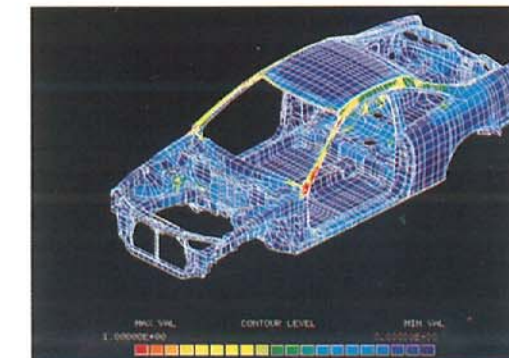
**THE ELECTRONICALLY CONTROLLED 4-SPEED AUTOMATIC TRANSMISSION WITH GRADE LOGIC CONTROL SYSTEM.**

The Honda Integra's automatic transmission offers an amazing blend of sporty response and sophistication.

It features an ignition retard system to reduce shift-shock, a computer controlled in-gear squat control, a low hold feature for enhanced response on demand and a large-capacity torque converter to reduce slippage.

The Grade Logic Control system is designed to reduce undesirable frequent shifting between second, third and fourth gears in situations such as up and downhill driving.

In addition to the Grade Logic Control system, the automatic transmission has a unique feature that allows the driver to hold first or second gear for specific driving situations, such as starting off from a parked position on an icy or slippery road.





## The integration of technology and safety.



Delight in the driving experience comes more readily when you know there are safety features in place that have your welfare in mind.

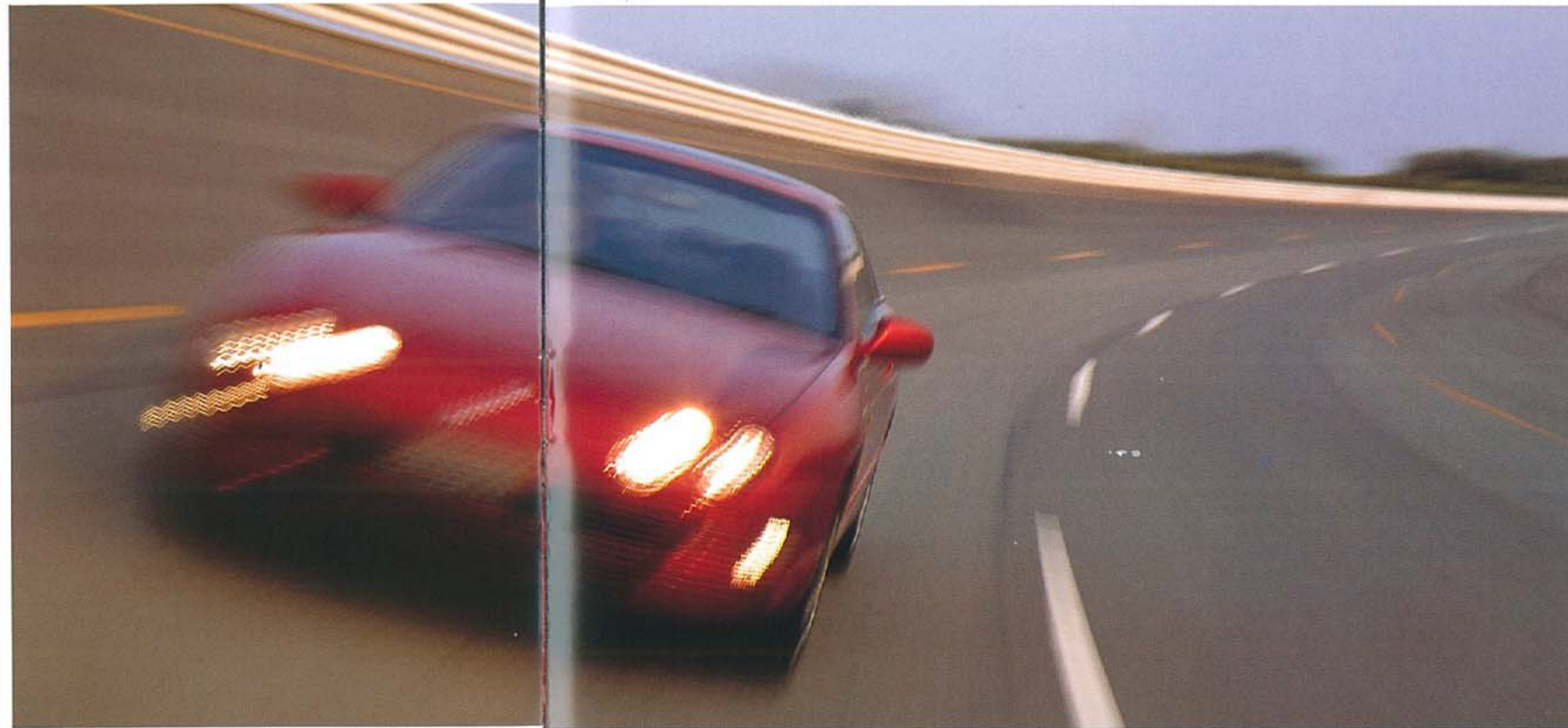
With that fact acknowledged, you should find driving the Integra a most pleasurable activity indeed.

This is one car that approaches safety from a unique, sporting perspective. Fulfilling Honda's commitment to passenger protection, the Integra was designed to exacting safety standards right from the outset and has achieved a level of security and confidence unique in its class.



### PASSIVE SAFETY.

Passive safety in the Integra begins with



high structural rigidity that enhances occupant protection in the unfortunate case of a collision.

The reinforced body structure incorporates crumple zones in the front and rear which are designed to deform in a controlled manner, thereby absorbing impact energy and helping to prevent penetration of the passenger compartment.

To minimise injury in the event of a side collision, the Integra features door intrusion beams and newly developed door pads.

These crushable pads are also designed to dissipate the energy of an impact, thus reducing the force transferred to the interior of the vehicle.

Complementing these measures, all Integra models are equipped with Honda's Supplemental

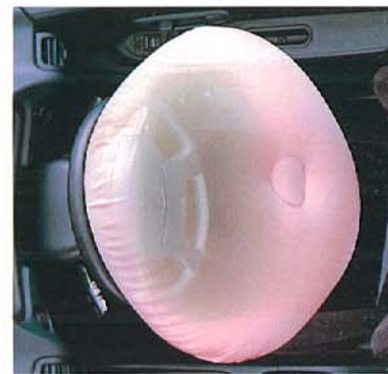
Restraint System (SRS) on the driver's side. Located in the steering wheel, the airbag inflates instantly, cushioning the head and upper body of the driver. Remarkably, inflation, protection and deflation, takes place in just a fraction of a second. The VTi-R also features a passenger side SRS airbag.

The Honda SRS airbag system has undergone extensive component-by-component analysis to achieve a high reliability rating, based on the 'NASA Reliability - Engineering Standards'. Also playing a major role in occupant protection is the Integra's seatbelt webbing clamp.

To enhance driver authority, the front seats are comfortable and firm. The controls are positioned within easy, natural reach and designed for at-a-glance recognition.

The Integra is equipped with high performance ventilated disc brakes on the front, and standard high performance disc brakes on the rear. The Integra also has Honda's latest generation Anti-lock Braking System (ABS) for more controlled braking and steering on slippery surfaces.

Pedal kickback has been reduced while stiffness and feel have been increased.



When activated, this device clamps onto the front seatbelts, holding the occupants safely in their seats.

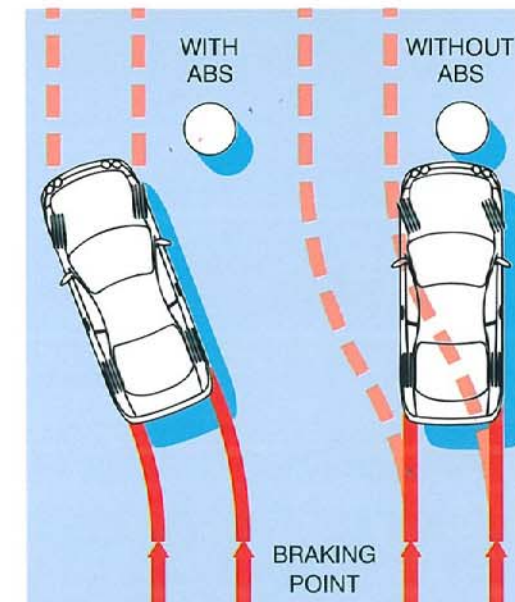


### ACTIVE SAFETY.

A safety method which is just as important as protecting occupants in the event of a collision, is a car's ability to avoid accidents before they happen.

The Integra features a host of active safety measures designed to combine with the driver's ability behind the wheel. For example, a responsive engine and outstanding manoeuvrability make it possible to avoid most problems.

The Integra's excellent all round visibility allows you to easily monitor traffic conditions.





All of the sports. All of the car.



The Integra's interior provides further confirmation of this car's identity as a truly unique sports car. There's ample room for four occupants, yet the feeling overall is one of intimacy and serenity. For the driver, all controls are logically arranged, so you can concentrate on the more important task of driving.

And all gauges reflect a contemporary sports-orientated design. Both driver and front passenger benefit from body-hugging bucket seats. In the rear, the spacious seating is designed to keep the occupants comfortable and content. Refinements made in the front seat

rail system give rear seat passengers much more foot room, while a 'knee escape' in the back of the front seats enhances comfort even more.

The 50/50 split rear seats fold forward to create an extremely large cargo space.

Access is made easy via the Integra's light-weight hatch-door. With redesigned hydraulic stays that are now installed inside the rain channel, the improvements in appearance and practicality are significant.

In order to maximise head room, the Integra features a sunroof that actually slides back and out of the roof. Unlike conventional sunroofs that slide into a receptacle inside the roof, this unit intrudes far less into the interior and contributes to increased front and rear head room.

- 1 An electric outer slide sunroof with a tilt-up mechanism improves headroom when open or closed.
- 2 Split-fold rear seats provide additional boot space when transporting larger items.
- 3 Power windows, power door mirrors and central locking add that extra level of comfort and convenience.
- 4 The cup holder secures hot and cold beverages firmly in place.





The integration of commitment  
and service.



At Honda, building the world's finest cars is just as important to us as providing the world's finest after sales service. The entire Honda Dealer network is dedicated to keeping your new Honda at peak performance, so it gives you years of pleasure. Honda Dealer staff and technicians are factory trained and kept up to date with the most advanced technologies by attending an ongoing series of seminars and training courses.

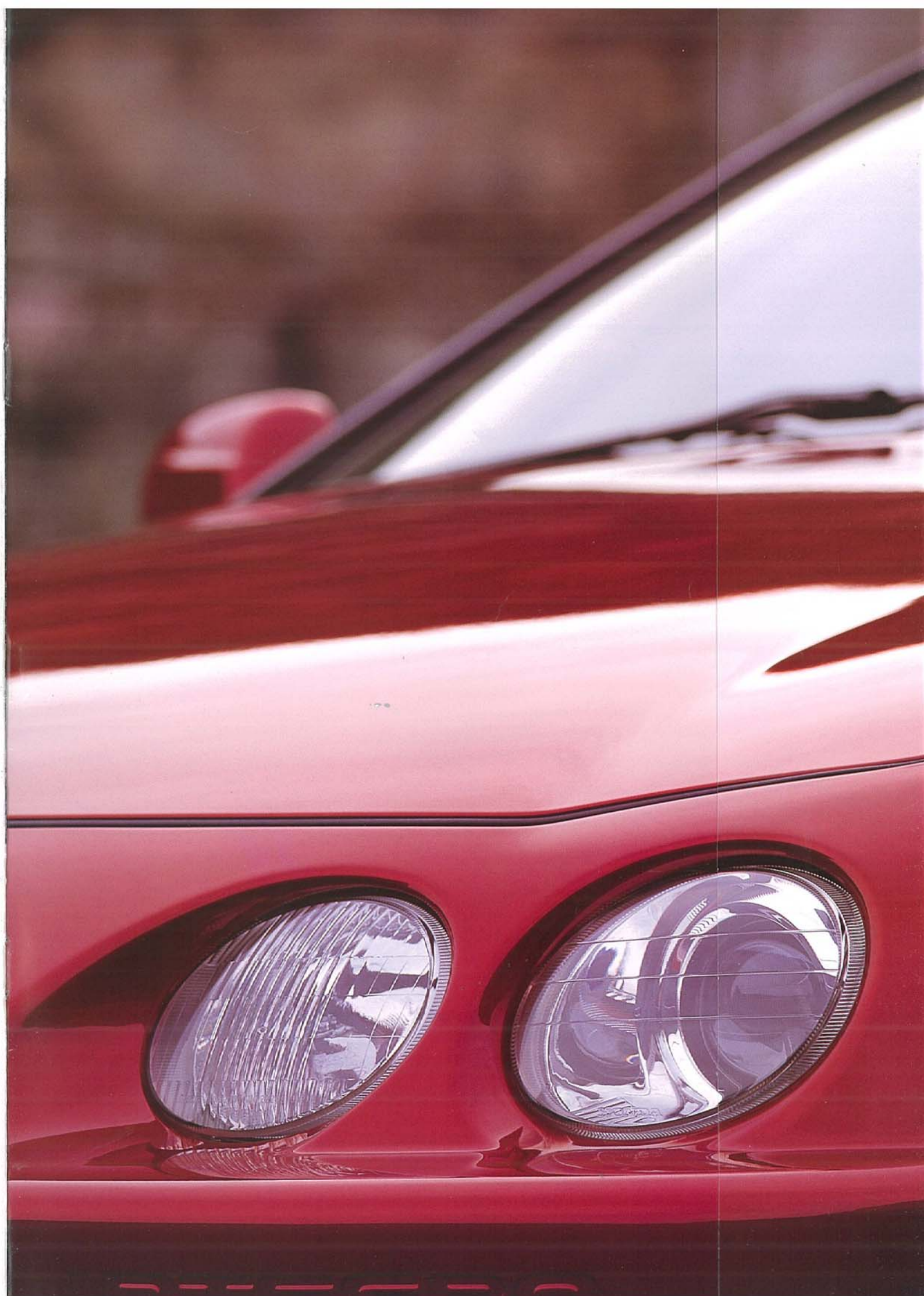
To ensure only the highest standards are maintained, we have strict requirements of a person or company who wishes to open a Honda Dealership. Every Honda Dealer maintains a comprehensive inventory of Genuine Parts and access to the central warehouse via the

Hondanet computerised order/supply system. Genuine Parts can be couriered overnight, for next day delivery anywhere in Australia. Nobody can service and tune your Honda like we can.

Our cars have such precise engineering that we use specialised high-tech equipment, unique to Honda. To maintain the value of your car it should always have a regular service, and you should always insist on Honda Genuine Parts.

Every new Honda motor vehicle comes with our 3 year, 80,000km warranty. This includes a 3 year surface corrosion warranty and a 6 year rust perforation warranty.

We are committed to providing prompt, courteous service in a professional manner at the time of purchase and throughout your ownership.







Honda Australia Pty. Ltd. A.C.N. 004 759 611.  
95 Sharps Road, Tullamarine, Victoria, 3043. Melbourne (03) 9285 5555.  
Brisbane (07) 3862 4777. Sydney (02) 9748 6511. Perth (08) 9481 5166.  
[www.honda.com.au](http://www.honda.com.au)

