

HONDA INTEGRA



SPECIFICATIONS/EQUIPMENT

ENGINEERING



Engine

Displacement (cc)
Bore & stroke (mm)
Compression ratio
Maximum power (kW/PS) @ rpm
Maximum torque (Nm/Kgm) @ rpm
Induction System

Ignition System

Battery
Emission control
Transmission type Manual
Transmission type Automatic

Gear Ratios

1st
2nd
3rd
4th
5th
Reverse
Final

GSi

All aluminium,
1.8 Litre, DOHC
16 valve, in line 4 cylinder

1834
81 x 89
9.2 : 1
107/145 @ 6300
172/17.5 @ 5200

Sequential multipoint
Programmed Fuel Injection
(PGM-FI)

Programmed Ignition System
(PGM-IG)

12V maintenance free
3-way catalytic converter
Synchromesh 5-speed
Electronically-controlled
4-speed with Grade Logic Control

Manual/Automatic

3.230/2.722
1.900/1.468
1.269/0.975
0.966/0.638
0.714/ -
3.000/1.954
4.266/4.357

VTi-R

All aluminium,
1.8 Litre, DOHC
16 valve, in line 4 cylinder, VTEC

1797
81 x 87.2
10.0 : 1
125/170 @ 7300
173/17.6 @ 6200

Sequential multipoint
Programmed Fuel Injection (PGM-FI)
with dual stage intake manifold

Programmed Ignition System
(PGM-IG)

12V maintenance free
3-way catalytic converter
Synchromesh 5-speed

Manual

3.230
1.900
1.360
1.034
0.787
3.000
4.400

SUSPENSION/CHASSIS



Suspension - front & rear

Stabiliser bars
Damper type - front & rear

Steering type
Steering wheel turn to lock
Turning circle - kerb to kerb (m)
Brakes - Front
- Rear

Anti-lock Braking System (ABS)

Wheel size
Tyre size & rating
Full wheel covers
Alloy Wheels
Spare tyre

Independent 4-wheel
double wishbone

Front & rear

Gas pressurised with Honda
Progressive Valve (HPV)

Power assisted rack & pinion

2.98

10.6

Power assisted ventilated discs

Power assisted discs

Electronically controlled

5.5JJ x 14

195/60 R14 86V

•

•

-

Space saver T125/70D14

Independent 4-wheel
double wishbone

Front & rear

Gas pressurised with Honda
Progressive Valve (HPV)

Power assisted rack & pinion

2.98

10.6

Power assisted ventilated discs

Power assisted discs

Electronically controlled

6JJ x 15

195/55 R15 84V

•

•

-

Space saver T125/70D14



EXTERIOR DIMENSIONS

	GSi	VTi-R
Overall length (mm)	4380	4380
Overall width (mm)	1710	1710
Overall height (mm)	1335	1335
Wheel base (mm)	2570	2570
Track (front/rear) (mm)	1475 / 1465	1475 / 1465
Ground clearance - laden (mm)	105	105
Kerb weight unladen (kg) - Man/Auto	1146 / 1165	1176

FUEL

Fuel tank capacity (litres)	50	50
Recommended fuel (ron)	91 or higher	95 or higher
Knock sensor	-	•
Fuel consumption	Manual/Automatic	Manual
City cycle (litres/100km)	8.5 / 9.5	8.5
Highway cycle (litres/100km)	6.8 / 7.0	7.2

EXTERIOR FEATURES



Alloy wheels	-	•
Full wheel covers	•	-
Metallic paint 3 coat, 3 bake process	•	•
Power door mirrors	•	•
Body coloured bumpers	•	•
Body coloured door handles	•	•
Protective side body mouldings	•	body coloured
Power antenna - automatic	•	•
Projector beam halogen headlights	•	•
Polycarbonate headlight lenses	•	•
2-speed/intermittent windscreen wipers	•	•
Rear window wiper washer	•	•
Rear window defroster	•	•
Chrome exhaust finisher	•	•
Front windscreen with green tint	•	•



ACCESSORIES

GSi

VTi-R



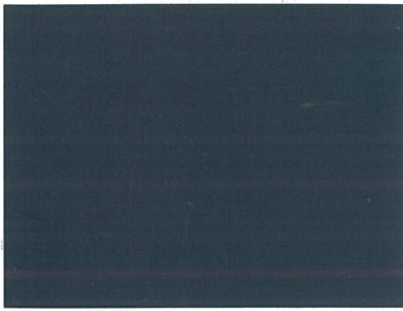
10 CD changer
Tailored mats
Sunroof visor
Door visor
Front mud flap
Rear mud flap
Alloy wheels
Gold emblem
Exhaust pipe finisher (gold)
Wheel arch mould
Front under spoiler
Corner protector
Rear tail spoiler with LED
Sheepskin covers
Boot mat
Ski carrier
Towbar

△
△
△
△
△
△
△
△
△
△
△
△
△
△
△
△
△
△
△
△

△
△
△
△
△
△
•
△
△
△
△
△
△
△
△
△
△
△
△
△

Honda has a wide range of Genuine Accessories for your new Integra to enhance comfort, style and practicality. Nobody knows the Integra better than your own Honda Genuine Parts and Accessories department. They'll install your accessories with the finest care and precision. All genuine Honda Accessories are covered by a 3 Year/80,000 kilometre Warranty if they're installed when you purchase your new Integra. Always insist on Genuine Honda Accessories.

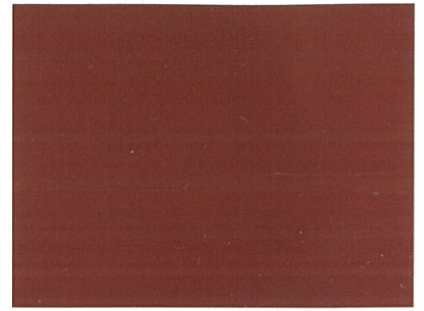




ADRIATIC BLUE PEARL



VOGUE SILVER METALLIC



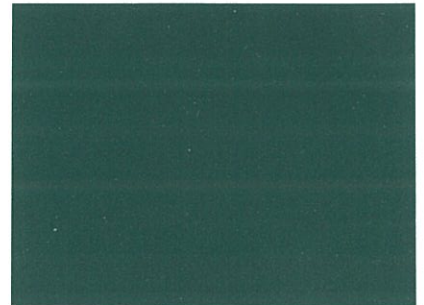
BURNING RED PEARL



STARLIGHT BLACK PEARL



FROST WHITE



CYPRESS GREEN PEARL

COLOURS

EXTERIOR

Adriatic Blue Pearl
 Vogue Silver Metallic
 Burning Red Pearl
 Starlight Black Pearl
 Frost White
 Cypress Green Pearl

INTERIOR GSi

Grey
 Grey
 Grey
 Grey
 Grey
 Grey

INTERIOR VTi-R

Black
 Black
 Black
 Black
 Black
 Black

The fuel consumption figures quoted in this brochure are based on AS2877-1986 test results. You may experience different results depending on driving conditions and the condition of the vehicle. The specifications and major features listed herein are accurate as at the date of printing (April 1998/98YM), however, Honda Australia Pty. Ltd. reserve the right to change or modify specifications and major features at any time without prior notice. Due to ordering, shipping and freight factors, some colour and model availabilities may vary from time to time. Check with your Honda Dealer for current information on availability.

APL HO16044/10M

• Standard Equipment Δ Available as Accessory - Not Available

 Printed on recycled paper



Honda Australia Pty. Ltd. A.C.N. 004 759 611.
 95 Sharps Road, Tullamarine, Victoria, 3043. Melbourne (03) 9285 5555.
 Brisbane (07) 3862 4777. Sydney (02) 9748 6511. Perth (08) 9481 5166.
www.honda.com.au