

HONDA CIVIC COUPE SPECIFICATIONS



HONDA



SPECIFICATIONS/EQUIPMENT

ENGINEERING



Engine

Displacement (cc)
Bore & stroke (mm)
Compression ratio
Maximum power (kW@rpm)
Maximum torque (Nm@rpm)

Induction System

Emission control

Ignition System

Battery

Transmission type Manual

Transmission type Automatic

Gear Ratios

1st
2nd
3rd
4th
5th
Reverse
Final

GLi Coupe

All aluminium,
1.6 Litre, SOHC
16 valve, in-line
4 cylinder

1590
75 x 90
9.4 : 1
77 @ 6200
139 @ 4600

Sequential Multipoint
Programmed Fuel
Injection (PGM-FI)

3-way catalytic
converter

Programmed
Ignition System
(PGM-IG)

12V maintenance
free

4-speed with
Grade Logic Control

Automatic

2.6
1.393
0.926
0.673
1.954
4.357

VTi-R Coupe

All aluminium,
1.6 Litre, DOHC
16 valve, in-line
4 cylinder with VTEC

1595
81 x 77.4
10.2 : 1
118 @ 7600
150 @ 7000

Sequential Multipoint
Programmed Fuel
Injection (PGM-FI)

3-way catalytic
converter

Programmed
Ignition System
(PGM-IG)

12V maintenance
free

Synchromesh
5-speed

Manual

3.230
2.105
1.458
1.107
0.848
3.0
4.4

SUSPENSION / CHASSIS



Suspension – front & rear

Stabiliser bars

Damper type – front & rear

Steering System

Steering wheels turn to lock
Turning circle – kerb to kerb (m)

Brakes – Front

– Rear

Anti-lock Braking System (ABS)
Wheel size
Tyre size

Independent
4-wheel double
wishbone

Front

Gas pressurised
with Honda
Progressive Valve
(HPV)

Power assisted
rack & pinion

3.6
10.0

Power assisted
ventilated discs
Power assisted discs

–

5.0JJ x 14
185/60 R14

Independent
4-wheel double
wishbone

Front & rear

Gas pressurised
with Honda
Progressive Valve
(HPV)

Power assisted
rack & pinion

4.1
10.4

Power assisted
ventilated discs
Power assisted discs

•

6.0JJ x 15
195/55 R15

EXTERIOR DIMENSIONS

	GLI Coupe	VTI-R Coupe
Overall length (mm)	4450	4450
Overall width (mm)	1695	1695
Overall height (mm)	1375	1375
Wheel base (mm)	2620	2620
Track (front/rear) (mm)	1475/1475	1475/1475
Ground clearance – laden (mm)	115	115
Vehicle weight (Tare) (kg)	1044	1114
Towing capacity (kg) - trailer braked	800 Auto	1000 Manual
- trailer unbraked	500 Auto	800 Manual

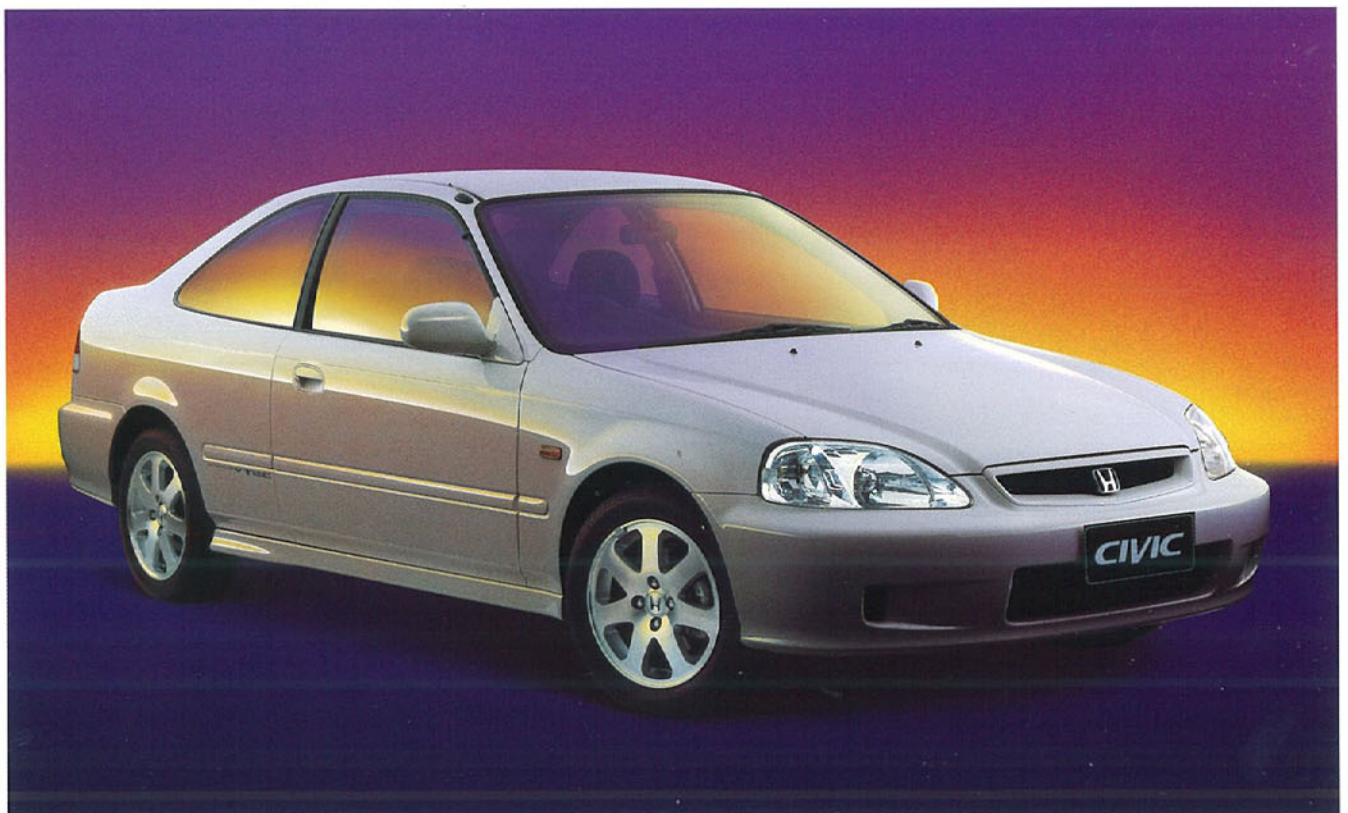
FUEL

	GLI Coupe	VTI-R Coupe
Fuel tank capacity (litres)	45	45
Recommended fuel	ULP	PULP
Fuel consumption	Automatic	Manual
City cycle (litres/100km)	8.5	9.5
Highway cycle (litres/100km)	6.6	7.4

EXTERIOR FEATURES



	GLI Coupe	VTI-R Coupe
Alloy wheels	Optional	•
Full wheel covers	•	-
Temporary spare tyre	•	•
Metallic paint 3 coat, 3 bake process	•	•
Pillar antenna	•	•
Power body coloured door mirrors	•	•
Body coloured bumpers	•	•
Halogen headlights	•	•
Body coloured door handles	•	•
Side protection mouldings	•	Body coloured
2-speed/intermittent windscreen wipers	•	•
Rear window defroster	•	•
Single chromed exhaust pipe	-	•

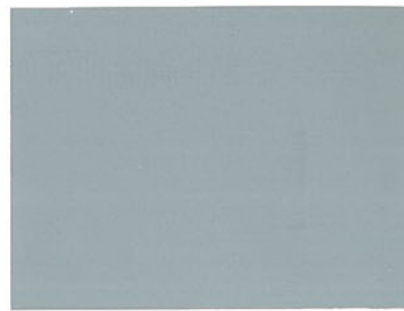




CLOVER GREEN PEARL



TAFFETA WHITE



VOGUE SILVER METALLIC



STARLIGHT BLACK PEARL



MILANO RED

COLOURS

EXTERIOR

- Clover Green Pearl
- Taffeta White
- Vogue Silver Metallic
- Starlight Black Pearl
- Milano Red

INTERIOR GLI

- Grey
- Grey
- Grey
- Grey
- Grey

INTERIOR VTi-R

- Grey
- Grey
- Grey
- Grey
- Grey

The fuel consumption figures quoted in this brochure are based on AS2877-1986 test results. You may experience different results depending on driving conditions and the condition of the vehicle. The specifications and major features listed herein are accurate as at the date of printing (May 1999/99YM). However, Honda Australia Pty. Ltd. reserve the right to change or modify specifications and major features at any time without prior notice. Due to ordering, shipping and freight factors, some colour and model availabilities may vary from time to time. Check with your Honda Dealer for current information on availability. Only Genuine Honda Accessories are made to fit Honda vehicles. For a Genuine Honda Accessory brochure contact your Honda Dealer or Honda Australia on 1800 672 217.

APL HOC6282/10M

- Standard Equipment
- Not Available



Honda Australia Pty. Ltd. A.C.N. 004 759 611.
 95 Sharps Road, Tullamarine, Victoria, 3043. Melbourne (03) 9285 5555.
 Brisbane (07) 3862 4777. Sydney (02) 8748 3333. Perth (08) 9277 0444.
www.honda.com.au