



*Spirited Cars For Spirited People*

LANCER COUPE



> EXCITING







**INDEPENDENT** > LANCER COUPE CAN'T WAIT TO GET GOING. WITH THE SPORTY SPIRIT OF ITS RALLY-DRIVING HERITAGE, LANCER COUPE IS AN EXCITING PERFORMER. IT BOASTS ALL THE ADVANCED MOTORING FEATURES OF A COMPETITION CAR, AS WELL AS THE EXCEPTIONAL COMFORTS OF AN INTERIOR DESIGNED TO MAKE YOU RELAX.

- > Lancer Coupe is feisty. With plenty of pace for negotiating the snarls of city traffic, it's right at home tackling the tricky bends of a highway. And with an open road in front, it settles down to the business of eating up the miles.
- > Offering all the convenience of a small car, GLi has a big heart. With its 1.5 litre 12 valve electronic multi-point fuel injected engine, or 1.8 litre 16 valve option, it's powerful enough to compete with the best.
- > GLi features the options of a sporty 5 speed manual or the intelligent INVECS II 'Smart Logic' 4 speed automatic transmission. The MR offers a further advancement with its optional 'SPORTS MODE' sequential gear-shifting. It turns your automatic into a sporty clutchless manual. This gives you the choice of manual or automatic modes with a simple flick of the leather gearshift.



**ADVENTUROUS** > YOU'RE NO STAY-AT-HOME. YOU LIKE TO GET OUT AND BE WHERE THE ACTION IS. LET MR COUPE TAKE YOU THERE IN STYLE. WITH ITS TRIM, TIGHTLY MUSCLED CHASSIS, EYE-CATCHING DETAIL AND SMART HANDLING, IT GETS YOU PAST THE CROWD TO EXACTLY WHERE YOU WANT TO GO.

> 01 For those who love to see and be seen, MR is irresistible. With body-colour rear spoiler, side sill, front bumper and rear quarter skirts, exterior mirrors and handles, there's no mistaking its strong presence.

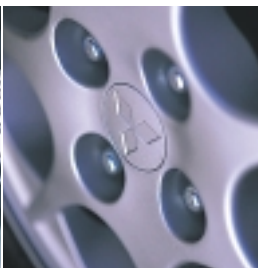
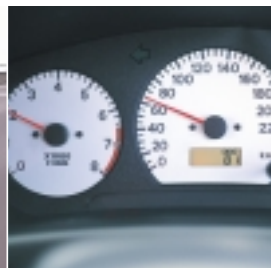
> 02 You can really check out the details with this one. High-contrast white instrument dials on MR let you know if your foot's too far down on the accelerator, whether you've got the fuel for the journey and other key driving data.

> 03 MR's 14" alloy wheels add a gleaming finish to road-hugging prowess. While coordinated wheel covers on the GLi add an extra touch of style.

> 01

> 02

> 03











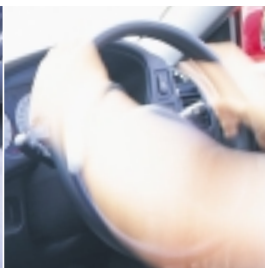
**ATTRACTIVE** > GLI COUPE HAS ALL THE DETAILS THAT MAKE YOU WANT TO KNOW THIS CAR A WHOLE LOT BETTER. THE ATHLETIC EXTERIOR IS COMPLEMENTED BY THE SORT OF SMOOTH-TALKING INTERIOR APPOINTMENTS THAT COULD MAKE YOU FALL HEAD-OVER-HEELS. CALL IT CHEMISTRY – IT'S GOT WHAT YOU NEED.

- > 01 The security coded, 4 speaker stereo CD means you can keep the party spirit going at whatever volume takes your fancy. Change your mind, your mood and your music with the 6 stacker CD in the MR.
- > 02 Don't cramp your style. Form hugging, fully reclining front bucket seats for driver and passenger comfort. MR has more flexibility with a split rear seat. As you'd expect, upholstery is smart, sleek and tonal.
- > 03 You don't have to try too hard. Power steering and a tilt-adjustable steering column maximise driver comfort and control. Get a grip. Feel your way sensuously then take charge with the leather-covered steering wheel and gearshift knob featured on MR.

> 01

> 02

> 03





RACY > LET'S GO – EXPECT THE THRILL OF A FAST MOVE. LANCER'S COMPETITION CARS HAVE BEEN TESTED ON THE ROUGHEST TRACKS AND MADE 4 CONSECUTIVE WORLD RALLY DRIVERS CHAMPIONSHIPS. BUT WITH VELOCITY COMES LOADS OF FINESSE AND MOTORING SOPHISTICATION. WE'RE TALKING ABOUT A SMOOTH OPERATOR.

- > With Mitsubishi's renowned suspension system – McPherson Strut at the front and independent multi-link suspension at the rear, Lancer Coupe offers the smoothest possible ride.
- > Safety is critical, and the car boasts sophisticated features including ventilated front disc brakes and a large brake booster, Lancer Coupe is nimble enough to come to a rapid halt when you need it to.
- > The body is light but exceptionally strong, highly resistant to bending and twisting and incorporating reinforcement at key points to create a safety cocoon. In addition, flame retardant materials are used throughout.
- > Not only does the car protect you and your passengers, it keeps an eye on the environment as well. Mitsubishi has employed a considerable amount of recycling in its manufacturing process, with the total elimination of harmful substances such as fluorocarbons and asbestos during the design process.















**PERFORMANCE** > LANCER COUPE IS NO LIGHTWEIGHT. WITH A HOST OF LEADING-EDGE ENGINEERING AND PASSENGER SAFETY FEATURES BUILT INTO THE CAR, YOU CAN BE CONFIDENT THAT YOUR JOURNEY WILL BE COMFORTABLE AND SMOOTH. PROWESS AND PROTECTION - LANCER COUPE DELIVERS.

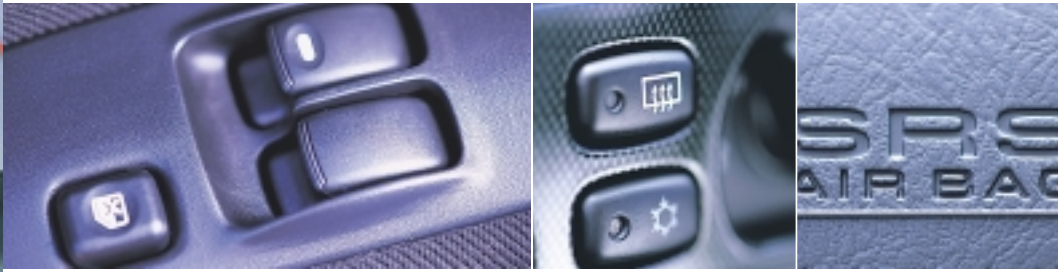
- > 01 Central locking and power windows on MR are just two small touches that can make all the difference to how you feel about the journey.
- > 02 As the going gets hot, the hot get going. But too much steam can impede performance, so adjust the airconditioning dials at the driver's fingertips to regulate the temperature for optimum interior comfort.
- > 03 Protection is, of course, part of the action. A driver's SRS airbag is standard on both MR and GLi; passenger airbag is standard on MR and optional on GLi.
- > The anti-theft engine immobiliser helps ensure that no-one slips in and drives away.



> 01

> 02

> 03





*Spirited Cars For Spirited People*

VISIT [WWW.MITSUBISHI-MOTORS.COM.AU](http://WWW.MITSUBISHI-MOTORS.COM.AU) > AT OUR INTERACTIVE WEBSITE YOU CAN VIEW A 360° VISUAL PRESENTATION OF LANCER AND FIND MORE COMPREHENSIVE DETAILS OF SPECIFICATIONS, FEATURES AND ACCESSORIES.

DEALER STAMP

MITSUBISHI MOTORS AUSTRALIA LTD. OFFERS A 3 YEAR/100,000 KILOMETRE NEW VEHICLE WARRANTY AND A 5 YEAR PERFORATION CORROSION WARRANTY ON MITSUBISHI LANCER COUPE. ALWAYS CONSULT YOUR AUTHORISED MITSUBISHI DEALER FOR THE LATEST DETAILS ON SPECIFICATIONS, OPTIONS, PRICES, AVAILABILITY AND CONDITIONS ON NEW VEHICLE WARRANTY. ALL PRODUCT ILLUSTRATIONS AND SPECIFICATIONS REFERRED TO HEREIN ARE CORRECT AT THE TIME OF PUBLICATION APPROVAL. SOME OF THE EQUIPMENT SHOWN IS OPTIONAL AT EXTRA COST AND SOME OPTIONS MAY BE REQUIRED IN COMBINATION WITH OTHER OPTIONS. SUBJECT TO ANY APPLICABLE FEDERAL, STATE OR TERRITORY LAWS OR ORDINANCES WHICH MAY APPLY FROM TIME TO TIME. MITSUBISHI MOTORS AUSTRALIA LTD. RESERVES THE RIGHT, WITHOUT NOTICE OR OBLIGATION, TO DISCONTINUE OR MAKE CHANGES TO DESIGNS, SPECIFICATIONS, COLOURS AND MATERIALS OF THE OPTIONS AND PRODUCTS REFERRED TO HEREIN AT ANY TIME WITHOUT INCURRING ANY LIABILITY TO ANY PURCHASER THEREOF.

©MITSUBISHI MOTORS AUSTRALIA LIMITED ACN 007 870 395 FEBRUARY '02 MT007