

honda civic



Honda Australia Pty. Ltd. ACN 004 759 611
95 Sharps Road, Tullamarine, Victoria, 3043. Melbourne (03) 9285 5555
Brisbane (07) 3260 4888 Sydney (02) 8748 3333 Perth (08) 9450 8207
Freecall 1800 804 954 honda.com.au

The fuel consumption figures quoted in this brochure are based on ADR81/01 test results. You may experience different results depending on driving conditions and the condition of the vehicle. Civic Hybrid power and torque figures are based on the combination of petrol and electric engines. The specifications and major features listed herein are accurate as at the date of printing (December 2004/05 YM). However, Honda Australia Pty. Ltd. reserve the right to change or modify specifications and major features at any time without prior notice. Due to ordering, shipping and freight factors, some colour and model availabilities may vary from time to time. Check with your Honda Dealer for current information on availability. Only Genuine Honda Accessories are made to fit Honda vehicles. For a Genuine Honda Accessory brochure contact your Honda Dealer or Honda Australia on 1800 804 954.

FCB HON3402

Printed on recycled paper.

more advanced
than ever



Vi Hatch

New ideas. New technologies. New solutions.
It's what drives Honda. And it's what has driven Honda's bold new generation Civic. Embracing the challenging spirit that has led them to many automotive innovations, Honda has taken the universally admired Civic and redesigned each and every component to bring drivers a Civic in 3 individual styles - GLi Sedan, Vi Hatch and Hybrid Sedan. Each model more dynamic than ever. A Civic more technologically advanced than ever. A Civic more spacious and environmentally conscious than ever. A Civic more... Civic than ever.

more exhilarating
than ever



From the very first moment you take the wheel, the differences between this Civic and all that have come before it quickly make themselves obvious.

Turn the key and you'll discover an explosive 1.7 litre engine, laying at the heart of both the 4-door Sedan and the 5-door Hatch, that raises the levels of performance and efficiency in Civic to its greatest heights yet.

In the Sedan this lighter, more compact and more powerful engine generates a lively 88 kilowatts of power. More impressively, it delivers class-leading levels of fuel efficiency as it does so.

In the Hatch this powerplant utilises Honda's Formula One race-bred VTEC technology to produce an awe-inspiring 96 kilowatts of power.

By varying the behaviour of the intake valves to match the needs of the engine, the VTEC enhanced engine of the Hatch further boosts both power and

fuel efficiency, delivering levels of performance designed to thrill.

The Hybrid introduces revolutionary technology to deliver 69 kilowatts of power with stunning fuel consumption figures and the lowest exhaust emission levels ever found in a mainstream Honda vehicle.

Honda's innovative single overhead camshaft (SOHC) design, which drives 4-valves-per-cylinder, is also utilised, allowing drivers of both the Sedan and Hatch to experience the spirited response of an exhilarating sports machine. While the combination of the i-DSI VTEC engine and electric motor in the Hybrid delivers more than enough power.

And just to prove that a powerful engine can also be a clean engine, the GLi Sedan and Vi Hatch utilise Honda's LEV (Low Emission Vehicle) technology, while the Civic Hybrid manages to go one step further and is classified as an Ultra-Low Emission Vehicle (ULEV). This means that Civic's exhaust emissions are reduced to their lowest yet - without any compromise in performance.

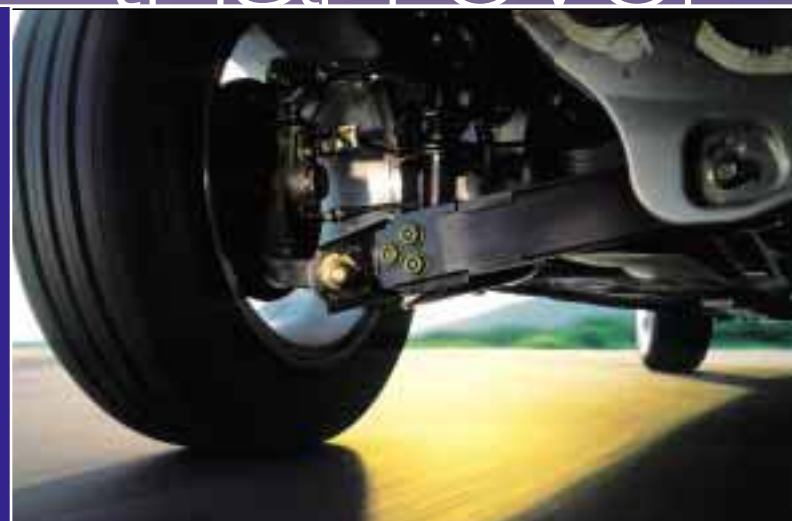


VTEC technology in Civic Hatch produces an awesome 96kW of power.



Vi Hatch

more **control**
than ever



It's not power alone that makes the Civic such a driver's car – it's also its immediate response to your every touch.

Wherever you want to go, the Civic obeys with accuracy and ease. Shortening the nose to make the Civic even more responsive and fun to drive, Honda's engineers ingeniously refined conventional strut suspension to create a much improved independent front suspension. Combined with Honda's acclaimed rear double-wishbone suspension system, this results in a masterstroke of handling.

Whilst changing lanes at high speed, the Civic tracks true, maintaining precision and smooth straight line stability. Manoeuvrability at lower speeds is also outstanding, allowing quick, easy parking and razor-sharp turns. Road-holding has also been further enhanced, with greater 'tyre to ground' contact so that all wheels really 'grip' the road.



GLi Sedan

Ask any Formula One driver, however, and they'll let you know that with superior levels of handling inevitably come inferior levels of comfort. But thanks to an inspired combination of high body rigidity, advanced chassis components and a supple suspension, Honda have ensured that both driver and passengers alike can enjoy Civic's exhilarating sports-like handling without the slightest sacrifice to comfort.

An ultra-responsive gear-shift delivering drivers more touch than ever, further enhances the sports-like feel of the Civic. Enjoy the slick sureness of the manual 5-speed with its crisp sporty shift-lever action. An automatic 4-speed with Grade Logic Control is sensitive to any change in the attitude of the car, and overcomes the normal hunting between gears in hilly

terrains so as to keep you in complete control. And the Continuously Variable Automatic Transmission in the Civic Hybrid delivers smooth, seamless shifts.

When it's time to slow down, Honda's responsive braking system allows you to stop smoothly and decisively, thanks to the specially tuned race-bred double-wishbone suspension in the rear. Also, when the situation demands hard braking on any surface, Anti-Lock Brakes (ABS) with large front and rear disc brakes allow the driver exceptional control at all times.



Honda's refined strut has created a much improved independent front suspension.

more **stylish**
than ever



Hybrid Sedan

One look at the Civic range and you won't believe your eyes. Bold, striking, futuristic – this is the most radical looking and ambitious Civic yet, cheekily redefining our expectations of what a car in this category can look like.



VI Hatch

Sweeping curves and refined lines reflect the fact that this is also the most aerodynamic Civic yet. A distinctive shorter nose, remodelled with an aggressively sporty front grille, enlivens the appearance of Civic from the front, creating a more streamlined and athletic silhouette. Dynamic halogen headlights contour seamlessly to the sleek lines of the Civic's form, contributing to Civic's overall organic presence.

Spirited, refreshing and invigorating, the Civic oozes a contemporary style and sure-footed poise that wouldn't be out of place on the catwalks of Paris and Milan. The smooth, sophisticated nature of the Civic isn't limited to its exterior appearance either. Every feature of the sporty Civic exudes quality and craftsmanship.

Flush surfaces, quality fixtures and precision closing mechanisms all combine to lift the Civic to new heights of style, delivering a fit and finish usually reserved for far more expensive automobiles.

This same level of attention to detail extends to the cockpit, which is ergonomically designed to keep you comfortable, alert and in total control.

The Civic's futuristic dashboard merges form and function with stunning simplicity. The ergonomic layout features large easy to read dials, all arranged for intuitive operation with controls, including a dash mounted gear-shift on the Hatch, placed within easy and logical reach of the driver.

So no matter which way you look at it, inside and out, Civic style is evident from every angle.

more **comfort**
than ever



Appearances can be deceiving, and so it is with the Civic. Sporty and compact from the outside, this is the most spacious Civic yet, with more generous and flexible interior dimensions than ever before.

With increased leg and headroom, Honda's engineers changed the seating to comfortably fit up to five adults. An innovative flat rear floor, made possible by redesigning chassis components, provides extra stretch room and greater ease of movement. Even entering and exiting the Civic becomes a breeze, courtesy of a cleverly raised seat height.

With greater space comes greater flexibility, and whether its shopping, sporting equipment or all the gear needed for a weekend away, Civic comfortably handles the busiest of lifestyles.

In fact, comfort is something you'll find plenty of in the Civic.

European style seats lend firm lateral support, preventing fatigue on the longest of journeys. The

driver's seat slides, reclines and adjusts in height to suit personal preferences, promoting optimal posture.

Convenient power features include central locking with keyless entry, power mirrors and windows. Storage compartments abound, and cupholders are within easy reach. And when the weather warms up, keeping everyone cool with Honda's refreshing air conditioning (a standard feature on the 5-door Hatch and Hybrid), is only the touch of a button away.

A state-of-the-art AM/FM Radio and CD player sound system ensures your favourite music sounds just the way you like it, whilst Civic itself has never sounded better thanks to a host of innovations. Noise and vibration have been lessened at all engine speeds, with noise markedly reduced during

acceleration, and quietness during idling further increased. Improved aerodynamics and reduced gaps lead to a much smoother transition of wind around the car, thus alleviating cabin noise, whilst more efficient insulation improves Civic's noise, vibration and harshness control.

You'll not only be more relaxed than ever before in the Civic's spacious, stress-free environment, but also more alert and responsive to the changing traffic conditions around you.

*Far Left: Hybrid Sedan interior.
Left: Vi Hatch interior.
Top: GLi Sedan interior.*

more green than ever



In the pursuit to bring you the most fuel efficient vehicle possible, our engineers managed to design one that set the benchmark for motoring standards across the globe.

As with all Honda vehicles, the Civic GLi Sedan and the sporty Vi Hatch have been engineered with the environment in mind, as well as the driver. That's why both utilise Honda's LEV (Low Emission Vehicle) technology to keep exhaust emissions at their lowest. But the Civic Hybrid goes one step further and is classified as ULEV (Ultra-Low Emission Vehicle) which means it runs cleaner and more efficiently.

It may seem obvious, but the wonderful thing about the new Civic Hybrid is that, well, it's still a Civic. It's unlike anything you'd expect a Hybrid vehicle to be, and everything you expect from the traditional Honda favourite. And most of this is thanks to Honda's revolutionary Integrated Motor Assist technology (IMA).



Acceleration

Combined power (petrol and electric) reducing fuel consumption.



Cruising

Petrol only, electric motor recharging if necessary.



Deceleration

Petrol only, conserving generated energy for later use.



Idling

Engine stops, conserving fuel and energy.



Hybrid Sedan

IMA combines the use of a petrol engine with an electric motor that boosts performance and reduces emissions. Not only that, it also delivers remarkable fuel economy. Almost a thousand kilometres per tank (5.2 litres per 100kms to be exact).

A 1.3 litre 4 cylinder i-DSI VTEC ULEV (Ultra Low Emission Vehicle) engine is teamed up with an ultra-thin electric motor and battery system to provide extra power when needed, such as during acceleration. While during times when cruising, decelerating or braking the motor becomes a generator and recharges its own batteries. And when you're at a stand-still, the engine cuts off entirely, saving fuel and the environment. The maintenance-free battery system is neatly tucked away

behind the rear seats, out of sight and most certainly out of mind. So basically, the IMA system does all the thinking for you - which means the only thing you need to concentrate on is enjoying the drive.

To guarantee this enjoyment, the Civic Hybrid's two powertrains work in unison to maximise power. The 1.3 litre i-DSI VTEC engine alone provides more than enough grunt to perform, but the added advantage of the electric motor provides that extra kick when needed. But power is nothing without control. That's why the Civic Hybrid offers a Continuously Variable automatic Transmission (CVT) system, which delivers smooth, truly seamless shifts throughout the rev range. So after just one drive, you'll realise that the Civic Hybrid is everything you could want in a Honda Civic - and more.

more safety than ever

*Driver and passenger
side airbags available
in Civic Hybrid only.*



When it comes to safety, you, your passengers, and even pedestrians are all being well looked after by the Honda Civic.

In a world first, Honda collated data from traffic accidents worldwide and reproduced real-world traffic accidents in a purpose built test facility to develop safety technology that reflects real-world driver needs.

This technology is named Honda G-force Control (G-CON) technology and its influence is evident throughout the design of the Civic.

Protection begins with active safety features that help you avoid accidents in the first instance, and the Civic is packed with such features. These include a commanding view of the road, powerful acceleration, responsive handling and highly efficient brakes.

However, if a collision does become unavoidable, Honda's G-CON comes into play, moderating the force of impact and helping to maintain a survival zone

around you and your passengers. Innovative front side frames crumple upon impact, then bend like a joint to absorb maximum energy in a frontal collision.

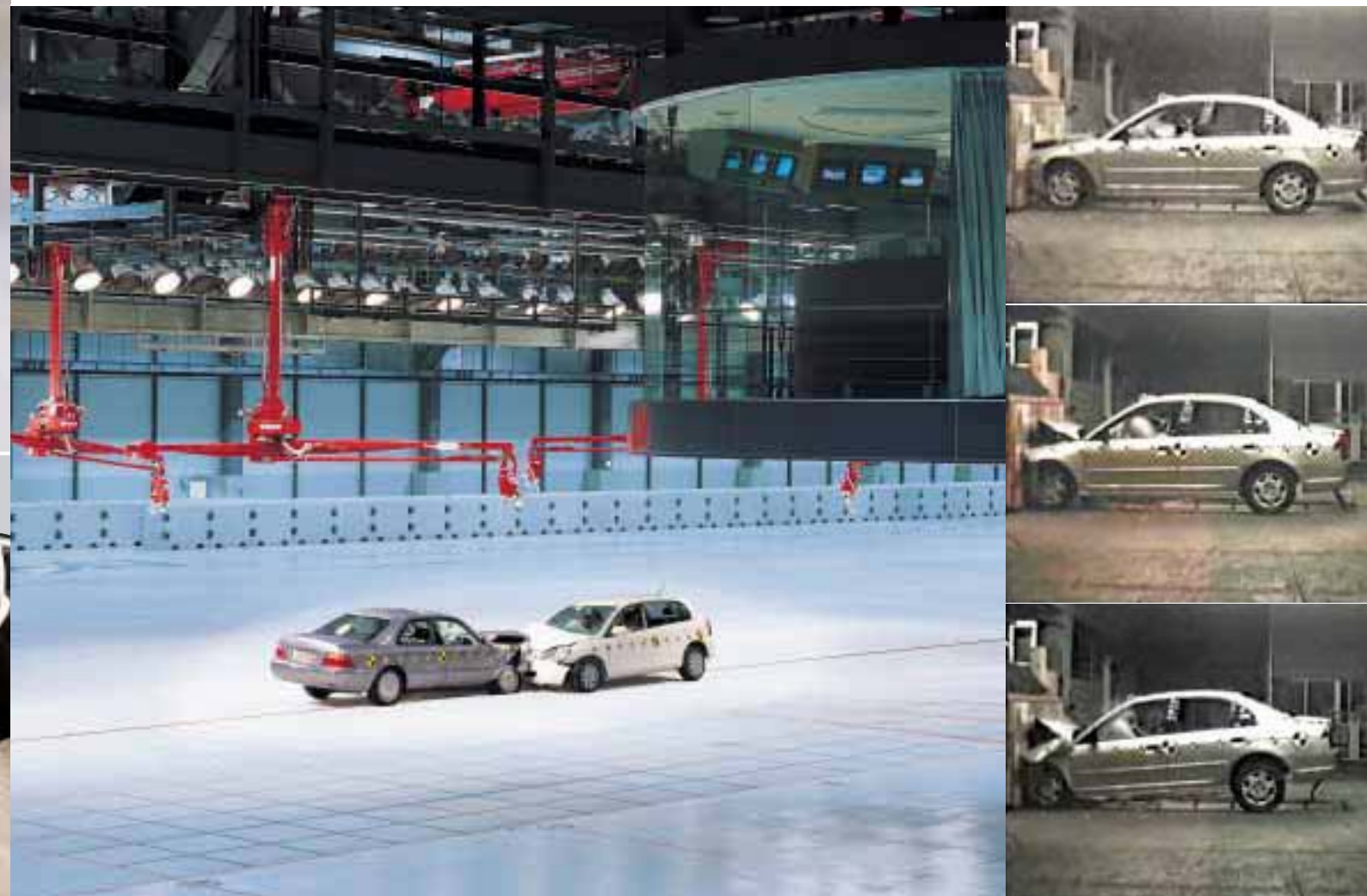
High-tension steel body panels, front and rear crumple zones, steel door beams and structural members that directly link and support all sides of the rigid body, all contribute to a highly protective shell that protects from every direction.

Honda's G-CON also extends to the safety of those outside the Civic. From information gathered with the help of the world's first pedestrian test dummy, Honda has designed hood, fender and wiper structures that help reduce the risk of pedestrian head injuries in the event of a car-pedestrian collision. So when it comes to safety, the Civic has been thoroughly tested inside and out.

Other passive safety features include 3 point ELR seatbelts, ABS, front pretensioners, conveniently located child restraint points, and both driver and passenger SRS airbags. Honda also addresses the special needs of children by providing child-proof door locks and a driver's window that doesn't pinch hands.

Advanced anti-theft measures offer protection of both the car itself and your possessions within. Lock knobs are flush with the doors when locked and outer door handles and door locks are designed to prevent break-ins. Should a thief attempt to start your Civic, an immobiliser renders the engine inoperative. Only the correct key, with the right built-in electronic code, will start the engine. This car is yours, and Honda wants to keep it that way.

*An example of the G-CON
testing process in Honda's
purpose built factory.*



more **service**
than ever



the **honda** way

“Our Pledge to a Unique Experience”

When you purchase a Honda, we dedicate ourselves to a standard of sales and after sales service that is consistent with the outstanding quality of our products.



GLi Sedan

At Honda, providing the world's finest after sales service is just as important as building the world's finest cars. So, as a new Civic owner, you're entitled to access our exclusive after sales website, HondaONE. Updating you with an on-line service history, personalised service reminders and vehicle maintenance tips, HondaONE allows you to view your vehicle records with the simple click of a mouse button.

It's just one of the ways the entire Honda Dealer network is dedicated to helping you keep your Civic in peak condition to give you years of pleasure.

Honda Dealer staff and technicians are factory trained and are kept abreast with the most advanced technologies by attending regular seminars and training courses.

Every Honda Dealer also maintains a comprehensive inventory of Genuine Parts and has access to a central

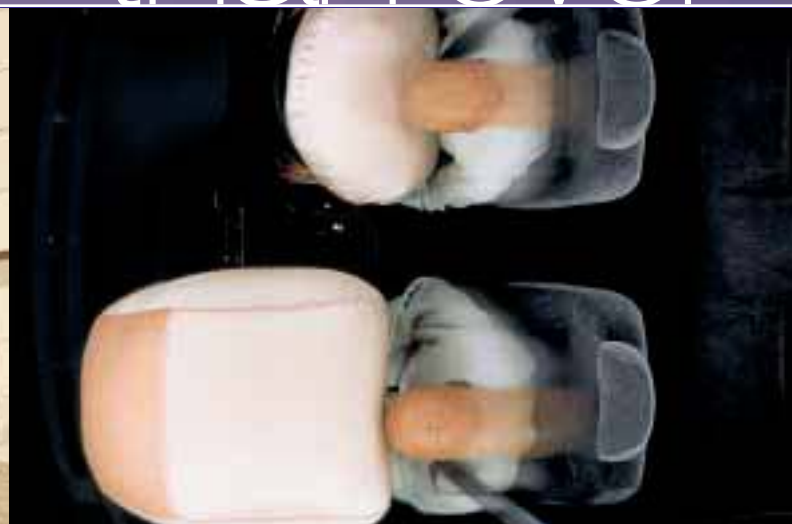
warehouse via the Hondanet computerised order/supply system, so parts can be quickly delivered anywhere.

Nobody can service and tune your Civic like we can. Our cars have such precise engineering that we use specialised high-tech equipment unique to Honda. To maintain the value of your car, it should always have regular services, and it pays to insist on Honda Genuine Parts. Every new Honda comes with our 3-year, 100,000km warranty. This includes a 3-year surface corrosion warranty and a 6-year rust perforation warranty. There's also an 8-year warranty on the Nickel Metal Hydride (Ni-MH) Battery module in the Civic Hybrid.

We're committed to providing prompt, courteous service in a professional manner at the time of purchase and throughout your ownership.



more honda than ever



Everything that Honda does is driven by the single-minded vision of founder, Soichiro Honda: "...to challenge conventional wisdom and create new, more useful technology."

This means utilising technology to create safer, more efficient and more user-friendly vehicles, and is the basis for Honda's Human-Centred Engineering.

Undoubtedly, motor racing provides the quickest road to achieving such innovation, bringing out the best in those behind the drawing board as much as those behind the wheel. That's why Honda has contested over 200 Formula One Grands Prix, proudly achieving 71 victories and a plethora of engineering advances.

Today, this research and development successfully continues unabated in Champ car and F1 racing. It was as a result of this racing program that Honda created the NSX and S2000. NSX pioneered many significant advances, including VTEC, which are now incorporated across the range. But, of course, nothing is more important

to the future than engineering that addresses the needs of our environment.

Honda continues to develop new solutions that deliver a better quality of life for not just the driver, but all, including the successful development of alternate energy vehicles like the Civic Hybrid.

As a result of challenging the conventional, every Honda is more powerful, reliable, safe and responsible. Yet, best of all, it is also more pleasurable to drive.

POWERTRAIN	4-DOOR GLI SEDAN	4-DOOR HYBRID SEDAN	5-DOOR Vi HATCH
Engine	Inline 4 cylinder SOHC	Inline 4 cylinder SOHC VTEC with i-DSI	Inline 4 cylinder SOHC VTEC
Capacity	1.7litre - 1668cc	1.3litre - 1339cc	1.7litre - 1668cc
Max power	88kW @ 6200rpm	69kW @ 5700rpm	96kW @ 6300rpm
Max torque	150Nm @ 4500rpm	146Nm @ 2000rpm	155Nm @ 4800rpm
IMA System (Integrated Motor Assist)	–	✓	–
Control system	Honda Programmed Fuel Injection (PGM-FI)	Honda Programmed Fuel Injection (PGM-FI)	Honda Programmed Fuel Injection (PGM-FI)
Emission Standard	Low Emission Vehicle (LEV)	Ultra Low Emission Vehicle (ULEV)	Low Emission Vehicle (LEV)
Manual transmission	5 speed	–	5 speed
Automatic transmission	4 speed with Grade Logic Control	CVT with Grade Logic Control	4 speed with Grade Logic Control
Fuel type	Unleaded	Unleaded	Unleaded

CHASSIS

Body Type	Monocoque	Monocoque	Monocoque
Front suspension	Independent	Independent	Independent
Rear suspension	Double wishbone	Double wishbone	Double wishbone
Stabiliser bars	Front & rear	Front & rear	Front & rear
Power steering	✓	Electric	Electric
Wheel type	Alloy	Alloy	Alloy
Spare wheel type	Full size	Temporary	Temporary
Front brakes	Vented disc	Vented disc	Vented disc
Rear brakes	Disc	Drum	Disc

EXTERIOR

Bumpers	Impact Absorbing	Impact Absorbing	Impact Absorbing
Fog Lights (front)	■	✓	■
Front wiper	2 speed & intermittent	2 speed & variable intermittent	2 speed & intermittent
Headlights	Halogen type	Halogen type	Halogen type
Keyless entry	x 2	x 2	x 2
Power door mirrors	Body coloured	Body coloured	Body coloured
Rear spoiler	■	Hybrid type	✓
Rear window demister	✓	✓	✓
Rear wiper	–	–	Intermittent
Side protectors	Body coloured	Body coloured	–

INTERIOR

Airconditioning	■	Climate control	Manual
Airconditioning pollen filter	■	■	■
Ashtray	Front & rear	Front & rear	Front & rear
Central locking	✓	✓	✓
Cup holders	2x front	2x front / 2x rear	3x front / 2x rear
Digital clock (in radio)	✓	✓	✓
Door pockets	Front x2	Front x2	Front x2
Driver's footrest	✓	✓	✓
Driver's seat height adjuster	✓	✓	✓
Driver's window	Auto up/down	Auto up/down	Auto up/down

INTERIOR CONT'D

	4-DOOR GLI SEDAN	4-DOOR HYBRID SEDAN	5-DOOR Vi HATCH
Glovebox	✓	✓	Illuminated
Head restraints - front	Adjustable	Adjustable	Adjustable
Head restraints - rear	✓	Adjustable	Adjustable
Interior illumination	Cargo area	Cargo area	Cargo area
Interior illumination	Courtesy light	Courtesy light	Courtesy light
Interior illumination	Map light	Map light	Map light
Lights-on warning	Audible	Audible	Audible
Low fuel warning	✓	✓	✓
Power windows	✓	✓	✓
Remote boot/hatch release	✓	✓	–
Remote fuel filler release	✓	✓	✓
Seats - front	Fully reclining	Fully reclining	Fully reclining
Seats - rear	60/40 split fold down	With armrest	60/40 split fold down
Seatback pocket	Passenger side	Passenger side	Passenger side
Seatbelt height adjuster	Front	Front	Front
Steering column	Tilt adjustable	Tilt adjustable	Tilt adjustable
Steering wheel	Urethane	Leather	Urethane
Tachometer	✓	✓	✓
Trim	Cloth	Cloth	Cloth
Tripmeter	✓	✓	✓
Vanity mirrors	✓	✓	✓
Windows	Heat absorbing	Heat absorbing	Heat absorbing

SAFETY FEATURES

Airbag SRS - front	Driver & front passenger	Driver & front passenger	Driver & front passenger
Airbag SRS - side	–	Driver & front passenger	–
Anti-Lock Brakes (ABS)	✓	✓	✓
Child protection locks	✓	✓	✓
Child safety seat anchorage's	x3	x3	x3
Convex door mirror	Passenger side	Passenger side	Passenger side
Fire retardant interior	✓	✓	✓
Front windscreen	Laminated	Laminated	Laminated
Fuel tank roll over valve	✓	✓	✓
Hazard warning lights	✓	✓	✓
High mounted stop light	✓	✓	✓
Honda G-CON technology	✓	✓	✓
Immobiliser system	✓	✓	✓
Monocoque body construction	✓	✓	✓
Progressive crumple zones	Front & rear	Front & rear	Front & rear
Rear view mirror	Day/night type	Day/night type	Day/night type
Screw type fuel cap	✓	✓	✓
Seatbelt pretensioners	Front seating positions	Front seating positions	Front seating positions
Seatbelt reminder light	Driver	Driver	Driver
Seatbelts - 3 point ELR	All seating positions	All seating positions	All seating positions
Side impact protection	✓	✓	✓
Steering column	Energy absorbing type	Energy absorbing type	Energy absorbing type
Transmission shiftlock	Auto only	✓	Auto only

DIMENSIONS	4-DOOR GLI SEDAN	4-DOOR HYBRID SEDAN	5-DOOR Vi HATCH
Length	4460 mm	4470 mm	4295 mm
Width	1715 mm	1715 mm	1695 mm
Height	1440 mm	1430 mm	1495 mm
Ground clearance - laden	113 mm	111 mm	112 mm
Weight - tare			
- man	1135 kg	-	1195 kg
- auto	1160 kg	1190 kg	1220 kg
Turning circle	10.4 m	10.6 m	11.0 m
Fuel economy - Combined (litres / 100 kms)	7.3 Man / 7.5 Auto	5.2 Auto	7.1 Man / 7.4 Auto
Fuel tank capacity	45 litres	50 litres	50 litres
Wheel size	14 x 5.5 JJ	14 x 5.5 JJ	15 x 6.0 JJ
Tyre size	185/70 R14 88H	185/70 R14 88H	195/60 R15 88H
Maximum towing capacity - trailer with brakes	1200kg Man / 800kg Auto	-	1200kg Man / 800kg Auto
- trailer without brakes	500kg	-	500kg
Seating capacity	5	5	5

AUDIO

Single in-dash CD tuner	✓	✓	✓
Front speakers	x 2	x 2	x 2
Rear speakers	x 2	x 2	x 2
Antenna	In-glass	Roof	Micro style

COLOURS

Exterior	Interior	Interior	Interior
Taffeta White	Grey	Ivory	Black
Satin Silver Metallic	Grey	-	Black
Fluorite Silver Metallic	-	Ivory	-
Galapagos Green Metallic	-	-	Black
Eternal Blue Pearl	Grey	-	-
Satellite Mist Metallic	Grey	-	-
Royal Ruby Red Pearl	Grey	-	-
Milano Red	-	-	Black
Bright Red Pearl	-	Ivory	-
Shoreline Mist Metallic	-	Ivory	-
Nighthawk Black Pearl [†]	Grey	-	Black

✓ Standard equipment ■ Optional - Not available



MILANO RED
Hatch



NIGHTHAWK BLACK PEARL*
Sedan[†]/Hatch



TAFFETA WHITE
Sedan/Hatch/Hybrid



ETERNAL BLUE PEARL*
Sedan



SATELLITE MIST METALLIC*
Sedan



ROYAL RUBY RED PEARL*
Sedan



SATIN SILVER METALLIC*
Sedan/Hatch



GALAPAGOS GREEN METALLIC*
Hatch



SHORELINE MIST METALLIC*
Hybrid



FLUORITE SILVER METALLIC*
Hybrid



BRIGHT RED PEARL*
Hybrid

INTERIOR COLOURS

	4-DOOR GLI SEDAN	HYBRID	5-DOOR Vi HATCH
Grey Cloth	✓	-	-
Black Cloth	-	-	✓
Ivory Cloth	-	✓	-

Please note: The towing capacity quoted in the Specifications for automatic transmission models is with the optional oil cooler fitted. Please contact your Honda Dealer for further information on towing capacities and requirements.

*Additional cost. [†]Available in the Civic 4 Door Sedan from March 2005.

Vi Hatch

