



MITSUBISHI
MOTORS

engineered to excite



MITSUBISHI
MOTORS

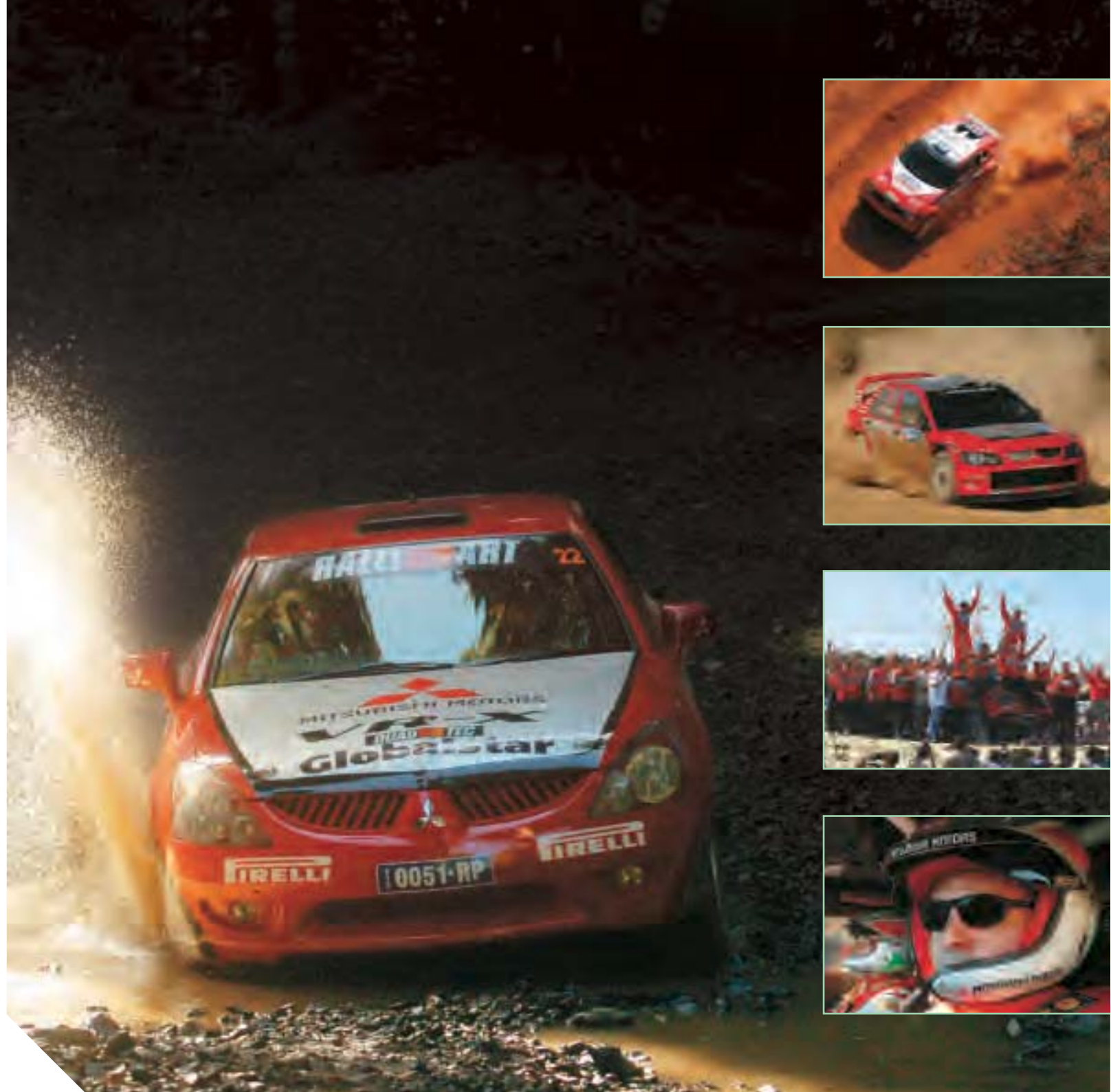
engineered to excite

TESTED BY THE BEST IN THE BUSINESS.

At Mitsubishi our cars face the ultimate test - rally driving. The lessons learned from driving on bone shaking, suspension-shattering terrain gives all our cars uncompromising durability and reliability. And the Magna is no exception.

Forty years of rally championships around the world have become the testing grounds for production of Mitsubishi vehicles. Like the punishing desert terrain of the Dakar, the world's toughest off-road rally - an 11,000km torture test. Plus the Australian and World Rally Championships, where Mitsubishi vehicles have been consistent winners.

It's Mitsubishi commitment to constantly evolving technology that has seen our cars win some of the world's toughest rally races time and time again. The Magna is just another chapter in a long running history of performance vehicles that transcend the world of rally driving to excel at everyday motoring.





MAGNA. NEVER HAS A CAR BEEN SO WELL EQUIPPED.

Never has a family car been so well equipped. Working side-by-side, Mitsubishi's designers and engineers set out to create a benchmark in the Australian market.

The result is arguably Australia's best-equipped locally built car.

Powered by a 3.5 litre SOHC 24-valve V6 engine with electronic multi-point fuel injection the Magna line up of standard features is unsurpassed including driver, front passenger and side SRS airbags, front and rear power windows, cruise control, automatic climate control air conditioning and 6-way power driver's seat.

MOTORSPORT INSPIRED VR-X.

With its distinctive styling and powerhouse performance Magna VR-X is a real driver's car. The full body kit including front airdam, side and rear skirts, rear deck lid spoiler and large chrome exhaust demonstrates a smooth but aggressive look. VR-X is also available in AWD offering superior driver confidence in all conditions.



SPORTY LEATHER SEATS WITH EMBROIDERED LOGO ARE OPTIONAL IN VR-X



AM/FM RADIO FEATURES 6-DISC IN-DASH CD STACKER AND 10 SPEAKERS





BE IN CONTROL

Magna VR-X console features a unique warm silver finish which is complemented by striking, sports style instruments. Get behind the wheel of the VR-X and experience the ease of the 5-speed manual transmission which delivers super smooth shifting and more top end power.

For those who like a choice, there is the genius of the 5-speed INVECS II 'Smart Logic' automatic transmission with 'Sports Mode' sequential gear shifting.



'SPORTS MODE' AUTO TRANSMISSION

PERFORMANCE TO MATCH

Enhanced with a free flowing Australian designed exhaust system and unique engine calibration, VR-X delivers 163kW of power at 5200rpm and 317Nm of torque at 4500rpm.



VR-X SPORTS INSTRUMENTATION





AM/FM RADIO WITH IN-DASH CD AND 8 SPEAKERS.



16" ALLOY WHEELS

IMPRESSIVE MAGNA LS AWD.

LS AWD offers a level of refinement which is instantly appealing. LS AWD features 16" alloy wheels, body coloured headlamps, side protection mouldings and mirrors with discreet AWD badging on the lower rear door and rear deck lid. Inside the cabin you'll find contemporary graphite coloured console highlights and striking sports style instruments with easy to read dials which minimise driver distraction.

The 5-speed INVECS II 'Smart Logic' automatic transmission with 'Sports Mode' sequential gear shifting is enhanced by the safety and performance benefits of Mitsubishi's QuadTec™ AWD system.

THE PERFECT CLIMATE

Ride and comfort is even further enhanced in all weather conditions as the climate control air conditioning maintains the interior temperature selected by the passenger or driver. Automatic sensors constantly monitor conditions inside and outside the car and adjust the fresh or recycled air accordingly.



CLIMATE CONTROL AIR CONDITIONING



5-SPEED INVECS II 'SMART LOGIC' WITH 'SPORTS MODE' SEQUENTIAL GEAR SHIFTING



MULTI PARABOLA HEADLIGHTS

MAGNA ES. RAISING THE STANDARD.

The ES is the entry level Magna model offering just about every feature you could ever wish for as standard.



FRONT AND REAR POWER WINDOWS

Behind the sophisticated European look styling is a car boasting driver & front passenger front and side SRS airbags, automatic climate control air conditioning, cruise control and front and rear power windows.

Magna ES is also available in a wagon variant with added features such as stylish fully integrated roof rails and one-piece fold down rear seat which provides over 2,200 litres of cargo space.





BE RELAXED.

Sit back and let the trip unfold with the convenience of cruise control which allows you to enjoy Magna's effortless performance on long road trips without touching the accelerator.

Driver comfort has also been enhanced on all models with the inclusion of a six-way power adjustable driver's seat designed to reduce fatigue and increase comfort. And you can find the cabin filled with clear, crisp music from the AM/FM radio and single CD with 6 speakers.



**AUTOMATIC CLIMATE CONTROL
AIR CONDITIONING**



**SIDE AIRBAGS STANDARD
ACROSS THE RANGE**



15" WHEELS WITH FULL COVERS



AWD
QUADTEC



ADVANCED QUADTEC™ AWD SYSTEM
3.5 litre SOHC 24-valve electronically injected V6



PRECISION BUILT PERFORMANCE.

The Magna AWD range is powered by a powerful, yet fuel-efficient 3.5 litre SOHC 24-valve electronically injected V6 engine, which has been designed to complement the QuadTec™ AWD system.

The Magna LS AWD engine rewards you with maximum power of 154kW at 5000rpm and maximum torque of 310Nm at 4000rpm, while the Magna VR-X AWD produces an impressive 159kW of power at 5500rpm and a maximum torque of 318Nm at 4000rpm. Magna ES and LS models benefit from 155kW offering enough power for all driving conditions while maintaining excellent fuel economy.

The VR-X uses the state of the art engine unit, coupled with a special exhaust system and unique engine calibration to provide even more impressive performance boasting 163kW at 5200rpm.

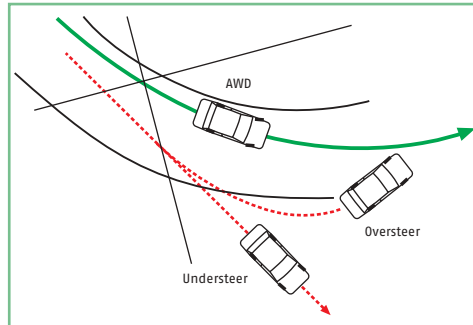
ADVANCED MITSUBISHI QUADTEC™ SYSTEM

Using many elements from the famed Mitsubishi Lancer Evolution rally bred car, the QuadTec™ AWD system with Limited Slip Differential boasts superior roadholding and outstanding traction, which you can actually feel.

This refined AWD system distributes torque evenly to all four wheels, however if it detects slip in any of the wheels the Viscous Coupling Unit automatically and optimally distributes torque to the front and rear wheels to ensure that the car continues to corner efficiently, maintaining stability and power.

Locally built and calibrated for Australian conditions, this intelligent system enhances drive away acceleration, overall stability, grip and cornering control for safer, more exciting driving.

And to complement the QuadTec™ AWD system, the Magna LS AWD and VR-X AWD have improved high performance brakes, with bigger ventilated front and rear discs and front twin piston calipers.

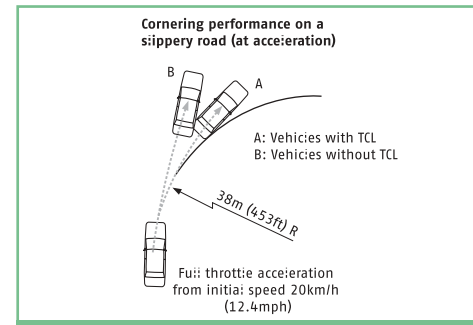
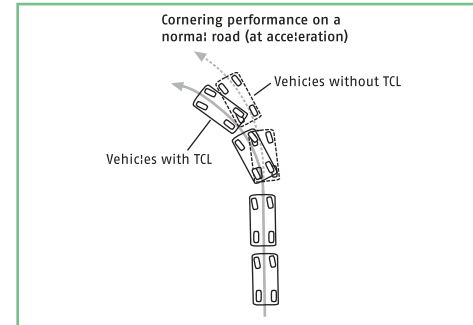


QUADTEC™ AWD SYSTEM

STAY IN CONTROL

The Traction Control (TCL) system is a key safety and control feature which is available on all Two-Wheel Drive Magna models. The system operates to optimally match engine power to driving conditions and road surfaces. It combines the features of slip control and trace control in the on TCL system.

A feature of the TCL system, Slip Control instantaneously regulates engine output to match front wheel traction, enabling the driver to maintain movement forward and accelerate smoothly over slippery surfaces such as wet or gravel surfaces.



TRACTION CONTROL LOGIC (TCL)

Trace Control enables the driver to keep the vehicle on a chosen line by constantly monitoring steering input and vehicle speed instantaneously adjusting engine power as required. When the system detects that the driver intends to accelerate excessively, the engine output is controlled so that the driver can negotiate corners easily and safely.



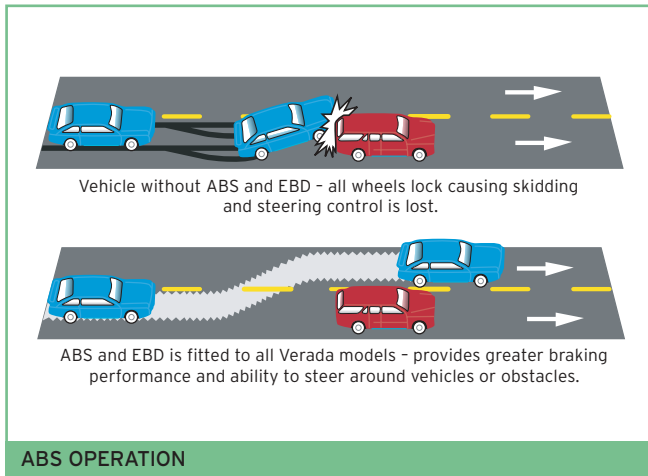
LPG MONO FUEL SYSTEM

Magna's 'green' mono fuel LPG system is available on specially built ES models. This system has been specifically designed to match the requirements of Magna's technologically advanced drive train, engine management systems and Mitsubishi's strict emission standards.

The result is a powerful engine that boasts excellent fuel efficiency, while delivering maximum power of 143kW at 5000rpm and maximum torque of 296Nm at 4000rpm.

And because safety is always paramount, the LPG tank is positioned in line with the rear axle for protection in the event of a rear impact.

MAXIMUM STOPPING POWER. MINIMAL EFFORT.



Magna features a 4-sensor, 4-channel Anti-lock Braking System (ABS) with Electronic Brakeforce Distribution (EBD) as standard. The ABS adjusts the braking pressure to prevent the wheels from locking up under emergency or hard braking conditions. The EBD system works with the ABS computer to evenly modulate braking force between front and rear wheels to provide improved stopping distances by taking into account vehicle load.

INSPIRING RIDE, HANDLING & STEERING

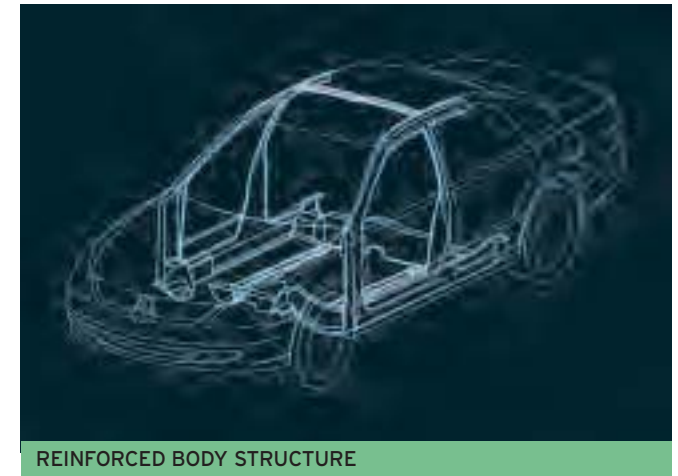
Mitsubishi's brilliantly engineered and exciting to drive Magna will provide you with great ride quality and cornering performance. The handling and steering characteristics are sportier and provide the driver with a greater feeling of control. However, Magna's traditionally comfortable ride has not suffered at the expense of a more sportier feel.



Magna is the only locally-built vehicle that offers both a 4-speed and 5-speed automatic transmission. INVECS II 'Smart Logic' provides smooth, seamless performance tailored to each driver by switching between logic control programs. Optimum Shift Control gathers input from vehicle and driver, and shifts gears in the way a good driver would using a manual. Adaptive Shift Control monitors the driver's style and alters shift patterns to suit individual preferences. The 4-speed INVECS II automatic transmission is available on Magna ES Sedan, Wagon and LS Wagon. The 5-speed INVECS II automatic transmission is available on Magna LS AWD, VR-X AWD, VR-X and VR Wagon.

'SPORTS MODE' EXHILARATION

'Sports Mode' makes the INVECS II 'Smart Logic' automatic transmission even more flexible. When the shift lever is moved sideways 'Sports Mode' is engaged letting the driver push the lever forward to move up a gear or pull it back to shift down a gear, giving the driver the convenience of an automatic, or the performance of a slick, clutchless manual. You can now step out of the auto mode and into the joys of manual override whenever the urge takes hold.



The monocoque Magna body provides optimum frontal and side impact protection. The energy absorbing front section is combined with a stronger, more rigid passenger safety cell featuring thickened high strength steel panels, additional reinforcing panels and structural foams, extra welding and a second side intrusion bar in the front doors.

All models meet the latest Offset Deformable Barrier (ODB) and Dynamic Side Impact (DSI) requirements.

KEY SAFETY FEATURES.



4-WHEELS DISC BRAKES - ABS AND EBD



DRIVER & PASSENGER FRONT SRS AIRBAGS



DRIVER & PASSENGER SIDE SRS AIRBAGS



FRONT SEAT BELT PRE-TENSIONERS



REAR SEAT CENTRE LAP/SASH SEAT BELT



EMERGENCY DOOR UNLOCK - FRONT & SIDE



CHILD PROOF REAR DOOR LOCKS



REST REMINDER - TRIP COMPUTER



MAGNA ACCESSORIES.

Mitsubishi is committed to complete customer satisfaction. Therefore, when Genuine Mitsubishi Accessories are fitted to your new vehicle at time of delivery, they are covered by the Mitsubishi 3 year/130,000km[†] Warranty.

[†]Whichever occurs first.

When they are fitted after purchase of your new vehicle they are covered for the remainder of the warranty or for 12 months/20,000km, whichever is the longer. In the case of Diamond Spectrum Accessories, the Warranty is 12 months/20,000km.



FIVE SPOKE 15" X 6" ALLOY WHEELS



RAINGUARDS - SEDAN



'MANTA' - 15" ALLOY WHEELS



'MAKO' - 16" ALLOY WHEELS



MAGNA SUNGUARD - SEDAN



SATELLITE NAVIGATION SYSTEM - SEDAN[†]



6-STACKER CD - BOOT MOUNT - SEDAN



PERFORMANCE MUFFLER - SEDAN



VR-X STYLE SPOILER - SEDAN



SPORTS ROOF RACKS - SEDAN



PARCEL NET - SEDAN



BOOT FLAP* - SEDAN



PLASTIC BOOTLINER - SEDAN



FLOOR MATS - VR-X SEDAN



FLOOR MATS



FLOOR MATS - RALLIART - SEDAN



FLOOR MATS - VR-X AWD - SEDAN



RUBBER MATS*



REAR CARGO CARPET MAT - WAGON



REAR CARGO LINER - WAGON



TIE-DOWN NET - WAGON



CARGO BARRIER - WAGON



PARCEL NET - WAGON



CARGO BLIND - WAGON



ROOF RACK CROSS BARS - WAGON



LOCKING FUEL CAP



LPG KIT - SEDAN



BONNET PROTECTOR



HEADLAMP PROTECTORS

*Diamond Spectrum Accessories. Pictures are shown for illustration purpose and may not be product specific.
†Satellite Navigation System includes a single CD player. 6-stack CD player shown is available as an additional accessory.



CHROME EXHAUST TIPS*



DASH MAT*



LEATHER EMBOSSED STEERING WHEEL



MOBILE PHONE HOLDER*



ASHTRAY



STANDARD TOWBAR AND TOWBALL - 1500KG



TOWBAR AND TOWBALL - 1500KG (EXCL VR-X)



TOWBAR AND TOWBALL - 1200KG



SCUFF PLATE*



VR-X SCUFF PLATE* - SEDAN



MUD FLAPS - FRONT



MUD FLAPS - REAR



LOCKING WHEEL NUTS*



ROLA SPORTS ROOF RACK ATTACHMENT*



ROLA SPORTS ROOF RACK ATTACHMENT*

*Diamond Spectrum Accessories. Pictures are shown for illustration purpose and may not be product specific.

MAGNA KEY SPECIFICATIONS

ENGINE

3.5 litre V6, SOHC 24-valve with roller rockers and auto lash adjusters		
Bore x stroke	93.0 x 85.8mm	
Capacity	3497cc	
Compression ratio	9.0:1	
Fuel system	Electronically controlled multi-point injection	

PERFORMANCE	POWER	TORQUE
ES Sedan	155kW @ 5250rpm	316Nm @ 4000rpm
ES LPG Sedan	143kW @ 5000rpm	296Nm @ 4000rpm
LS AWD Sedan	154kW @ 5000rpm	310Nm @ 4000rpm
VR-X 2WD Sedan	163kW @ 5200rpm	317Nm @ 4500rpm
VR-X AWD Sedan	159kW @ 5500rpm	318Nm @ 4000rpm
ES Wagon	155kW @ 5250rpm	316Nm @ 4000rpm
LS Wagon	155kW @ 5250rpm	316Nm @ 4000rpm
VR Wagon	163kW @ 5200rpm	317Nm @ 4500rpm

FUEL TANK CAPACITY	71 litres (2WD)	65 litres (AWD)	68 litres (Wagon)
---------------------------	-----------------	-----------------	-------------------

FUEL CONSUMPTION L/100KM (ADR 81/01)	5-SPD MANUAL	4-SPD AUTO	5-SPD AUTO
ES Sedan	11.8	11.5	-
ES LPG Sedan	-	15.6	-
LS AWD Sedan	-	-	13.1
VR-X 2WD Sedan	11.6	-	12.3
VR-X AWD Sedan	-	-	13.0
ES Wagon	-	12.1	-
LS Wagon	-	12.1	-
VR Wagon	-	-	12.6

These figures are obtained from controlled laboratory tests conducted by Mitsubishi Motors Australia Limited to Australian Standard ECE R101 to meet Euro 2 emission standards and are provided to assist you in comparing the fuel consumption of Magna with other vehicles. The actual fuel consumption you achieve will depend, however, on many factors, including your driving habits, the prevailing conditions and your vehicles equipment, condition and use.

TRANSMISSION

Manual transmission	5-speed, all synchromesh, floor shift.
Auto transmission	4-speed INVECS II 'Smart Logic' automatic transmission with 'SPORTS MODE' sequential gear shift 5-speed INVECS II 'Smart Logic' automatic transmission with 'SPORTS MODE' sequential gear shift

GEAR RATIOS

RATIO	5-SPEED MAN	4-SPEED AUTO	5-SPEED AUTO
1st	3.333	2.842	3.789
2nd	2.105	1.495	2.057
3rd	1.407	1.000	1.421
4th	1.031	0.731	1.000
5th	0.804	-	0.731
Reverse	3.416	2.720	3.865
Final drive	3.736	3.269	3.684

AWD DRIVELINE RATIOS

Transfer	0.301
Centre Differential	3.684
Rear Differential (LSD)	3.312

BRAKES

Power assisted 4-wheel discs		
Anti-lock Braking System (ABS) with Electronic Brakeforce Distribution (EBD)		
	Magna ES, VR-X,LS(w), VR(w) - Standard Brakes	LS AWD & VR-X AWD - High Performance Brakes
Front	276mm vented discs with single pot calipers	294mm vented discs with twin pot calipers (+ 18mm over standard)
Rear	258mm solid discs with single pot calipers	284mm vented discs with single pot calipers (+26mm over standard)

SUSPENSION - SEDAN

Front	Independent MacPherson strut with coil springs, lower A-arm and anti-sway bar
Rear	Independent multi-link with upper and lower control arms, coil springs, telescopic shock absorbers and anti-sway bar

WAGON

Front	Independent MacPherson strut with lower A-arm and anti-sway bar
Rear	Tubular axle with four trailing arms, lateral locating rod, coil springs and telescopic shock absorbers

STEERING

Power Assisted Rack & Pinion

TURNING CIRCLE

11.2 metres

DIMENSIONS	ES	LS AWD	VRX 2WD	VR-X AWD	ES WAGON	LS WAGON	VR WAGON
Overall length	4860	4860	4860	4860	4846	4846	4846
Overall width	1785	1785	1785	1785	1785	1785	1785
Overall height	1435	1435	1422	1422	1497	1497	1497
Wheelbase	2722	2722	2722	2722	2722	2722	2722

Track

Front	1545	1545	1545	1545	1545	1545	1545
Rear	1535	1535	1535	1535	1505	1505	1505
Ground clearance	158	158	165	165	165	165	165

INTERNAL - MM

Head room (front)	1001
Head room (rear)	952
Leg room (front)	1108
Leg room (rear)	947

TRUNK CAPACITY	470 litres (sedan)	†2229 litres (wagon)
-----------------------	--------------------	----------------------

† With seats folded down

MAGNA KEY SPECIFICATIONS

MAXIMUM TOWING CAPACITY	1500kg	With trailer brakes with 80km/h limit and weight distributing hitch.					
	500kg	No trailer brakes or distribution hitch required.					
KERB MASS - KG	MANUAL			AUTOMATIC			
	ES	1509					1535
ES LPG	-						1538
LS AWD	-						1663
VR-X 2WD	1536						1576
VR-X AWD	-						1686
ES WAGON	-						1597
LS WAGON	-						1608
VR WAGON	-						1634
ELECTRICAL SYSTEM	MAGNA						
Battery	12V / 430CCA						
Alternator	110A						
MECHANICAL	ES (S&W)	ES LPG	LS AWD	VR-X 2WD	VR-X AWD	LS (W)	VR (W)
POWERTRAIN							
3.5 litre V6 SOHC 24-valve MPI engine	✓	✓	✓	✓	✓	✓	✓
Maximum Power	155kW	143kW	154kW	163kW	159kW	155kW	163kW
	@ 5250 rpm	@ 5000 rpm	@ 5000 rpm	@ 5200 rpm	@ 5500 rpm	@ 5250 rpm	@ 5200 rpm
Maximum Torque	316Nm	296Nm	310Nm	317Nm	318Nm	316Nm	317Nm
	@ 4000 rpm	@ 4000 rpm	@ 4000 rpm	@ 4500 rpm	@ 4000 rpm	@ 4000 rpm	@ 4500 rpm
5-speed manual transmission (sedan only)	✓	✓	-	✓	-	-	-

POWERTRAIN (continued)	ES (S&W)	ES LPG	LS AWD	VR-X 2WD	VR-X AWD	LS (W)	VR (W)
4-speed INVECS II 'Smart Logic' automatic transmission with 'SPORTS MODE' sequential gear shift	Opt	Opt	-	-	-	✓	-
5-speed INVECS II 'Smart Logic' automatic transmission with 'SPORTS MODE' sequential gear shift		-	✓	Opt	✓	-	✓
LPG compatible engine ¹	Opt	✓	-	-	-	✓	-

¹ Traction control is not available on ES LPG monofuel

MECHANICAL

QuadTec™ AWD System	-	-	✓	-	✓	-	-
Traction & Trace Control with off switch 1	Opt	-	-	✓	-	✓	✓
Power assisted 4-wheel disc brakes	✓	✓	-	✓	-	✓	✓
Front - 276mm vented disc with single pot calipers	✓	✓	-	✓	-	✓	✓
Rear - 258mm solid disc with single pot calipers	✓	✓	-	✓	-	✓	✓
Premium power assisted 4-wheel disc brakes	-	-	✓	-	✓	-	-
Front - 294mm vented disc with twin pot calipers	-	-	✓	-	✓	-	-
Rear - 284mm vented disc with single pot calipers	-	-	✓	-	✓	-	-
Anti-lock Braking System [ABS] with Electronic Brakeforce Distribution [EBD]	✓	✓	✓	✓	✓	✓	✓
Limited Slip Differential [LSD]	-	-	✓	-	✓	-	-
Power assisted steering	✓	✓	✓	✓	✓	✓	✓
Sports exhaust	-	-	-	✓	✓	-	✓

SUSPENSION

Independent Front Suspension MacPherson							
Strut with lower A-arm & stabiliser bar	✓	✓	✓	✓	✓	✓	✓
Independent Rear Suspension - Independent multi-link with upper & lower control arms, coil springs & telescopic shock absorbers [sedan only]	✓	✓	✓	✓	✓	-	-
Tubular axle with four trailing arms, lateral locating rod, coil springs & telescopic shock absorbers [wagon only]	✓	-	-	-	-	✓	✓
Rear stabiliser bar	✓	✓	✓	✓	✓	✓	✓
Sports tuned suspension	-	-	-	✓	✓	-	✓

MAGNA KEY SPECIFICATIONS

EXTERIOR

WHEELS	ES (S&W)	ES LPG	LS AWD	VR-X 2WD	VR-X AWD	LS (W)	VR (W)
15" x 6" steel wheels. Full cover. 205/65R15 95H Bridgestone RE92 tyres.	✓	✓	-	-	-	-	-
15" x 6" five spoke alloy wheels. 205/65R15 95H Bridgestone RE92 tyres.	Opt	Opt	-	-	-	✓	-
16" x 7" ten spoke alloy wheels. 215/60R16 95H Turanza tyres.	-	-	✓	-	-	-	✓
16" x 7" six spoke alloy wheels. 215/60R16 Grid II tyres.	-	-	-	-	✓	-	-
17" x 7" five spoke alloy wheels. 225/50R17 Grid II tyres.	-	-	-	✓	-	-	-
Matching spare wheel ²	✓	✓	✓	✓	✓	✓	✓

²Steel spare wheel from 2005

EXTERIOR STYLING

Body coloured bumpers	✓	✓	✓	✓	✓	✓	✓
Multi parabola headlamps	✓	✓	✓	✓	✓	✓	✓
Colour coded headlamp bezels	✓	✓	✓	✓	✓	✓	✓
Door mirrors - electric [black]	✓	✓	-	-	-	-	-
Door mirrors - electric [body colour]	-	-	✓	✓	✓	✓	✓
Outer door handles - body coloured	✓	✓	✓	✓	✓	✓	✓
Upper grille - colour coded	-	-	-	✓	✓	-	-
Steel wire mesh lower grille	-	-	-	✓	✓	-	-
Body colour side protection mouldings	-	-	✓	✓	✓	✓	✓
Chromed exhaust pipe	-	-	-	✓	-	-	-
Mud flaps	◆	◆	◆	◆	◆	◆	◆
Front fog lamps - sports style	-	-	-	-	-	-	✓
Front fog lamps - Colour coded shark eye style	-	-	-	✓	✓	-	-
Body kit - front, rear & side airdams	-	-	-	✓	✓	-	-
Deck lid spoiler - body colour	-	-	-	✓	✓	-	-
Tailgate air deflector [wagon only]	✓	-	-	-	-	✓	-
Roof spoiler - body colour [wagon only]	-	-	-	-	-	-	✓
Roof rails [wagon only]	✓	-	-	-	-	✓	✓
High mount stop lamp	✓	✓	✓	✓	✓	✓	✓

INTERIOR

AUDIO	ES (S&W)	ES LPG	LS AWD	VR-X 2WD	VR-X AWD	LS (W)	VR (W)
Electronic tune AM/FM Radio/CD with security code & telephone mute ¹	✓	✓	✓	-	-	✓	✓
High grade electronic tune AM/FM Radio /CD, with 6-disc in-dash CD stacker, security code & telephone mute ¹				✓	✓		
Satellite navigation system [sedan only] ²	◆	◆	◆	◆	◆	◆	◆
Power antenna	✓	✓	✓	✓	✓	✓	✓
Number of speakers [positions]	6 [4]	6 [4]	8 [6]	10 [8]	10 [8]	8 [6]	8 [6]

1. Telephone mute operational where hands free kit accessories fitted.

2. 6-stackers at additional cost when Satellite Navigation fitted

INTERIOR STYLING

Chrome surround on 'Sports Mode' automatic transmission gear shift	-	-	-	✓	-	-	-
Chrome surround on 'Sports Mode' automatic transmission gear shift with embossed AWD logo	-	-	✓	-	✓	-	-
Standard Instrument meter	✓	✓	-	-	-	✓	-
Standard Instrument meter - AWD logo	-	-	✓	-	-	-	-
Sports Instrument meter	-	-	-	-	-	-	✓
Sports Instrument meter - VR-X logo	-	-	-	✓	-	-	-
Sports Instrument meter - AWD logo	-	-	-	-	✓	-	-
Warm silver centre console	-	-	-	✓	✓	-	-
Sports Mode indicator for auto transmission	✓	✓	✓	✓	✓	✓	✓

SAFETY

Driver SRS airbag in steering wheel	✓	✓	✓	✓	✓	✓	✓
Front passenger SRS airbag	✓	✓	✓	✓	✓	✓	✓
Driver & front passenger side SRS airbags	✓	✓	✓	✓	✓	✓	✓
Automatic transmission & ignition interlock	-	-	✓	-	✓	-	-
Driver & front passenger seat belt pre-tensioners	✓	✓	✓	✓	✓	✓	✓
Prismatic interior rear view mirror	✓	✓	✓	✓	✓	✓	✓
Rear seat centre lap/sash seat belt	✓	✓	✓	✓	✓	✓	✓
Emergency door unlock - front & side impact	✓	✓	✓	✓	✓	✓	✓
Child proof rear door locks	✓	✓	✓	✓	✓	✓	✓
Child restraint anchor points	✓	✓	✓	✓	✓	✓	✓
Rest reminder	✓	✓	✓	✓	✓	✓	✓

MAGNA KEY SPECIFICATIONS

INTERIOR (CONTINUED)

	ES (S&W)	ES LPG	LS AWD	VR-X 2WD	VR-X AWD	LS (W)	VR (W)
SEATING							
Jacquard woven seat trim	✓	✓	-	-	-	-	-
Woven Knit seat trim	-	-	✓	-	-	✓	-
Sporty Jacquard woven seat trim	-	-	-	-	-	-	✓
Sporty Jacquard woven seat trim with metallic yarns featuring embroidered VR-X logo	-	-	-	✓	✓	-	-
Black perforated leather back and cushion seat trim featuring embroidered VR-X logo and matching stitching	-	-	-	Opt	Opt	-	-
6-way power driver's seat with slide, height & tilt adjustment	✓	✓	✓	✓	✓	✓	✓
Driver's seat manual lumbar & recline adjustment	✓	✓	✓	✓	✓	✓	✓
Passenger seat with manual slide, & recline adjustment	✓	✓	✓	✓	✓	✓	✓
Driver and passenger front seat belt adjustable shoulder anchor	✓	✓	✓	✓	✓	✓	✓
Height adjustable driver and passenger front seat head restraint	✓	✓	✓	✓	✓	✓	✓
Integrated rear seat headrests	✓	✓	✓	✓	✓	✓	✓
Seating capacity - 5 adults	✓	✓	✓	✓	✓	✓	✓
COMFORT							
Automatic climate control air-conditioning with rear outlets	✓	✓	✓	✓	✓	✓	✓
Power windows front & rear. One touch down function on driver window. Remains powered on after engine switched off until 30 seconds after door is opened	✓	✓	✓	✓	✓	✓	✓
Cruise control	✓	✓	✓	✓	✓	✓	✓
Leather wrapped steering wheel	-	-	✓	✓	✓	-	✓
Black embossed leather steering wheel ¹	-	-	-	Opt	Opt	-	-
Leather wrapped gear shift	-	-	✓	✓	✓	-	✓
Leather wrapped handbrake	-	-	-	✓	✓	-	-
Rear seat centre armrest with boot access ²	✓	✓	✓	✓	✓	✓	✓
Side window demisters in front doors	✓	✓	✓	✓	✓	✓	✓
Electric glass sunroof - sedan only, remains powered on after engine switched off until 30 seconds after door is opened	Opt	Opt	Opt	Opt	Opt	-	-
EZ-KOOL [®] tinted side & rear glass	✓	✓	✓	✓	✓	✓	✓

1. available only with Leather option

2. Boot access is not available on ES LPG monofuel

	ES (S&W)	ES LPG	LS AWD	VR-X 2WD	VR-X AWD	LS (W)	VR (W)
CONVENIENCE							
10 Function Trip Computer, including: average speed, speed alarm, instant fuel consumption, average fuel consumption, total fuel used, distance to empty, time travelled, total distance travelled, rest reminder, service reminder	✓	✓	✓	✓	✓	✓	✓
Electric door mirrors	✓	✓	✓	✓	✓	✓	✓
Door courtesy lamps - front	-	-	✓	✓	✓	✓	✓
Front map lamps & room lamp	-	-	✓	✓	✓	✓	✓
Interior light activation on key removal	✓	✓	✓	✓	✓	✓	✓
Vanity mirror - passenger	✓	✓	✓	✓	✓	✓	✓
6-stage tilt adjustable steering column	✓	✓	✓	✓	✓	✓	✓
Electric remote boot lid release for sedan	✓	✓	✓	✓	✓	✓	✓
Remote fuel filler door release	✓	✓	✓	✓	✓	✓	✓
Mobile phone preparation	✓	✓	✓	✓	✓	✓	✓
Accessory socket	✓	✓	✓	✓	✓	✓	✓
Variable instrument lighting dimmer	✓	✓	✓	✓	✓	✓	✓
Tailgate assist handle [wagon only]	✓	-	-	-	-	✓	✓
Convenience lamp in boot	✓	✓	✓	✓	✓	✓	✓
Service reminder - appears 500km before service is due	✓	✓	✓	✓	✓	✓	✓
SECURITY							
Radio wave keyless entry features panic alarm	✓	✓	✓	✓	✓	✓	✓
Central door locking [inc. tailgate on wagon]	✓	✓	✓	✓	✓	✓	✓
Two stage door unlocking [first press opens driver's door only]	✓	✓	✓	✓	✓	✓	✓
Cabin illumination for safe entry	✓	✓	✓	✓	✓	✓	✓
Automatic relocking	✓	✓	✓	✓	✓	✓	✓
Alarm - works on hood, trunk, tailgate & doors	✓	✓	✓	✓	✓	✓	✓
Anti-theft encrypted immobilisation	✓	✓	✓	✓	✓	✓	✓
Delayed headlamps off - programmable timer	✓	✓	✓	✓	✓	✓	✓
Door lock in driver's door only	✓	✓	✓	✓	✓	✓	✓
Steering lock	✓	✓	✓	✓	✓	✓	✓
Flashing security lamp in radio	✓	✓	✓	✓	✓	✓	✓
STORAGE							
Cup holder in console with lid [2]	✓	✓	✓	✓	✓	✓	✓
Cup holder in rear armrest [2]	✓	✓	✓	✓	✓	✓	✓
Passenger seat undertray	✓	✓	✓	✓	✓	✓	✓
Glovebox with lamp	✓	✓	✓	✓	✓	✓	✓
Cargo room lamp [wagon only]	✓	-	-	-	-	✓	✓
Cargo floor carpet [wagon only]	✓	-	-	-	-	✓	✓
One piece fold down rear seat [wagon only]	✓	-	-	-	-	✓	✓

COLOUR RANGE.

M = Metallic P = Pearlescent ◆ ES/LS (S+W) ▲ VR-X/VR (S+W)



MAWSON WHITE ◆▲



GRANGE (P) ◆



TANAMI (M) ◆



ZEN (P) ▲



KASHMIR (P) ◆



SAPPHIRE BLUE (P) ◆▲



PLATINUM (M) ◆▲



FLAME RED ◆▲



FUSION (M) ▲



STARLIGHT (P) ◆



SABLE (P) ◆▲



DAINTREE GREEN (P) ◆



COLT

The Colt has big car performance and substance, wrapped in small car agility. It has Mitsubishi's all new sporty 1.5 litre MIVEC engine, CVT (Continuous Variable Transmission) that provides improved economy and performance and smoothness. The Colt line up includes LS and the sporty XLS.



LANCER

The CH Lancer takes Mitsubishi's rally-bred technology to the city streets in a distinctive look with a host of great features. The sporty VR-X, with its bold rear spoiler and black interior, boasts 16" alloy wheels, a strut brace for greater handling and 4-speed automatic transmission with 'SPORTS MODE' sequential gear shifting for hands-on control from the EVO type 'Steermatic' 3-spoke steering wheel.



VERADA

The distinctive Verada continues to set the benchmark in quality and refinement. Verada comes with all the features standard on Magna, plus a ten-way adjustable power driver's seat, traction control and a premium audio system with 6-disc, in-dash CD changer. Verada models include Ei (sedan and wagon), Xi and GTVi AWD which boasts outstanding stability, superior roadholding and improved cornering control for safer, more spirited driving.



OUTLANDER

A compact 4WD with powerful 2.4 litre MIVEC engine offering a unique combination of sports styling, flexible interior space, ride comfort and unprecedented safety. Seats five people in comfort and features a range of cargo-carrying options, while the automatic transmission boasts 'SPORTS MODE' sequential gear shifting.



CHALLENGER

A luxurious and sporty all-terrain 4WD with advanced aerodynamic styling and superior ride comfort. Features a 3.0 litre V6, LPG compatible 24-valve multi-point fuel injected engine with an impressive maximum towing capacity of 2270kg.



PAJERO

An undisputed off-road rally champion, Pajero delivers superior off-road performance through Mitsubishi All Terrain Technology (MATT™), available across the range. Its renowned reliability, generous interior space and superior safety is complemented by the powerful 3.8 litre V6 24-valve fuel-injected engine, with the option of a 3.2 litre intercooled turbo Direct injection Diesel (Di-D). Pajero also boasts a maximum towing capacity of 2500kg.



GRANDIS

An all-new breed of multipurpose vehicle, Grandis offers both function and freedom. Comfortably seating seven adults, the sporty exterior is powered by an advanced 2.4 litre MIVEC engine incorporating variable valve timing to deliver optimum performance in any driving conditions.



TRITON

A tough, hard-working ute available in a range of powerful engine capacities and fuel types. The range of Triton models includes Cab Chassis, Double Cab and Club Cab.



EXPRESS

One of Australia's favourite light commercial vans, Express features a choice of petrol engines that are LPG compatible. The range of body types includes Short Wheel Base (SWB), Medium Wheel Base (MWB), Window Van (SWB) and Walk-Thru model (MWB).

Diamond Finance

Take the burden out of financing your new Mitsubishi Colt with our competitive, reassuring and completely flexible range of finance products developed by Mitsubishi Motors Australia Ltd and St George Motor Finance Limited.

Diamond Insurance

With the sound backing of Swann Insurance and Mitsubishi Motors Australia Ltd, Mitsubishi owners can choose vehicle and personal protection solutions including motor vehicle, gap cover and loan protection insurance as well as a range of tailored warranty policies.

Diamond Leasing

Our tailored fleet leasing services offer innovative, highly competitive features such as card purchasing, roadside assistance, specialist maintenance services, accident and claims management, optional insurance and more.

Diamond Road Side Assist

Peace of mind is guaranteed anywhere in Australia, 24 hours a day, 365 days a year with our fast, comprehensive and flexible roadside service, offering assistance, repairs, towing and storage. Our Premium Roadside Assist clients also enjoy the added benefits of accommodation, medical and transport facilities.

For more information on Diamond Products and Services, contact your Mitsubishi Dealer.

Mitsubishi Motors Australia Ltd. offers a 5 year/130,000km* New Vehicle Warranty, a 10 year/160,000km* Powertrain Warranty[†] and a 5 year Perforation Corrosion Warranty on Mitsubishi Magna. Always consult your authorised Mitsubishi Dealer for the latest details on specifications, options, prices, availability and conditions on New Vehicle Warranty. All product illustrations and specifications referred to herein are correct at the time of publication approval. Subject to any applicable Federal, State or Territory Laws or ordinances, which may apply from time to



**BETTER BUILT
BETTER BACKED**

time, Mitsubishi Motors Australia Ltd. reserves the right, without notice, or obligation, to discontinue or make changes to designs, specifications, colours and materials of the options and products referred to herein at any time without incurring any liability to any purchaser thereof.

©Mitsubishi Motors Australia Limited.
ABN 53 007 870 395. MAG0501

*Whichever occurs first. [†]Non-transferable