



OUTLANDER



outlander engineered to excite MITSUBISHI MOTORS



**Discover the spirit of freedom.** The modern, retro feel of the Outlander VR-X is reflected in the stylish, ergonomically designed cockpit, featuring twin dials reminiscent of aeronautical instrumentation. The eye-catching instrument cluster is complemented by a carbon fibre look dash, which incorporates the centrally mounted analogue clock with attractive chrome plated bezel. All controls are within easy reach, making driving a breeze.

VR-X available Sept. 04.





engineered to excite

- R



**Room for all.** The 60:40 split fold second row seats create a cavernous storage area with a huge 1049 litre\* capacity for a multitude of cargo and luggage carrying options. With the seats up, there is still a generous 402 litres\* of storage space, while the VR-X and XLS also have a security blind in the rear luggage area to keep valuable items out of view.

\* VDA method



**Leather riding luxury.** The Outlander VR-X now takes ride comfort further with its new luxury leather and suede alcantara trim, chrome exterior door handles, chrome interior door handles, chrome scuff plates on the front doors and a chrome tailgate entrance strip, driver's seatback pocket, along with the convenience of retractable headlight washers.



**Driver Control.** Outlander features Mitsubishi's acclaimed INVECS II "Smart Logic" 4 speed automatic transmission which is complemented by "SPORTS MODE" sequential gear shifting for intuitive driving when you want hands on control. The positioning of the gearshift lever in the centre dash panel results in superior ergonomics for the driver and provides an additional sense of space.



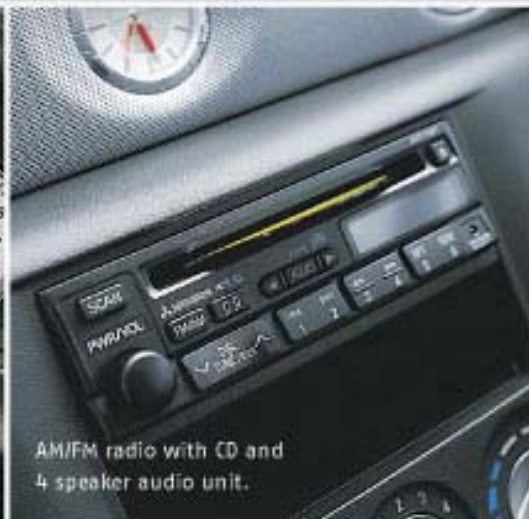
**Convenient storage and comfort.** The large floor console box includes various easy to reach compartments for comfortable storage, a lid for added security, and sturdy, enclosed cupholders for passenger and driver convenience.



**Outlander LS.**



The LS model features driver and passenger SRS airbags, power windows, electric mirrors, air conditioning, cruise control, single CD player, central locking with remote keyless entry and height adjustable central armrest for the driver and passenger. LS safety features include ABS brakes with Electronic Brake force Distribution (EBD) as standard along with 4-wheel disc brakes.



**Outlander XLS.**



The sporty XLS has features such as white faced instrument dials, leather wrapped steering wheel and gearshift lever, ABS brakes with EBD, driver, front passenger and side SRS airbags. Side 3/4 privacy glass and 16" alloy wheels, rear spoiler with high mounted stop lamp and front fog lamps.





**Outlander VR-X.**

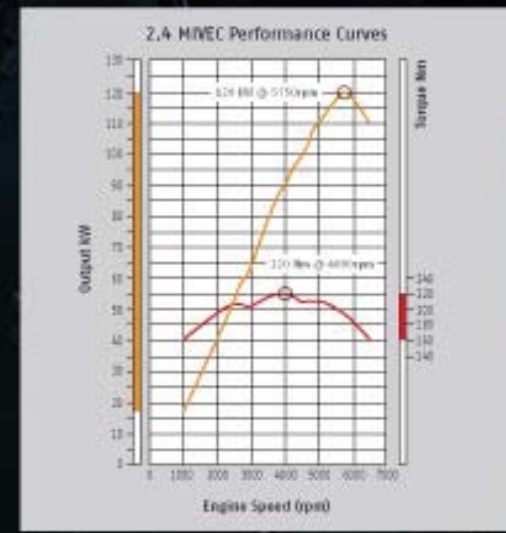
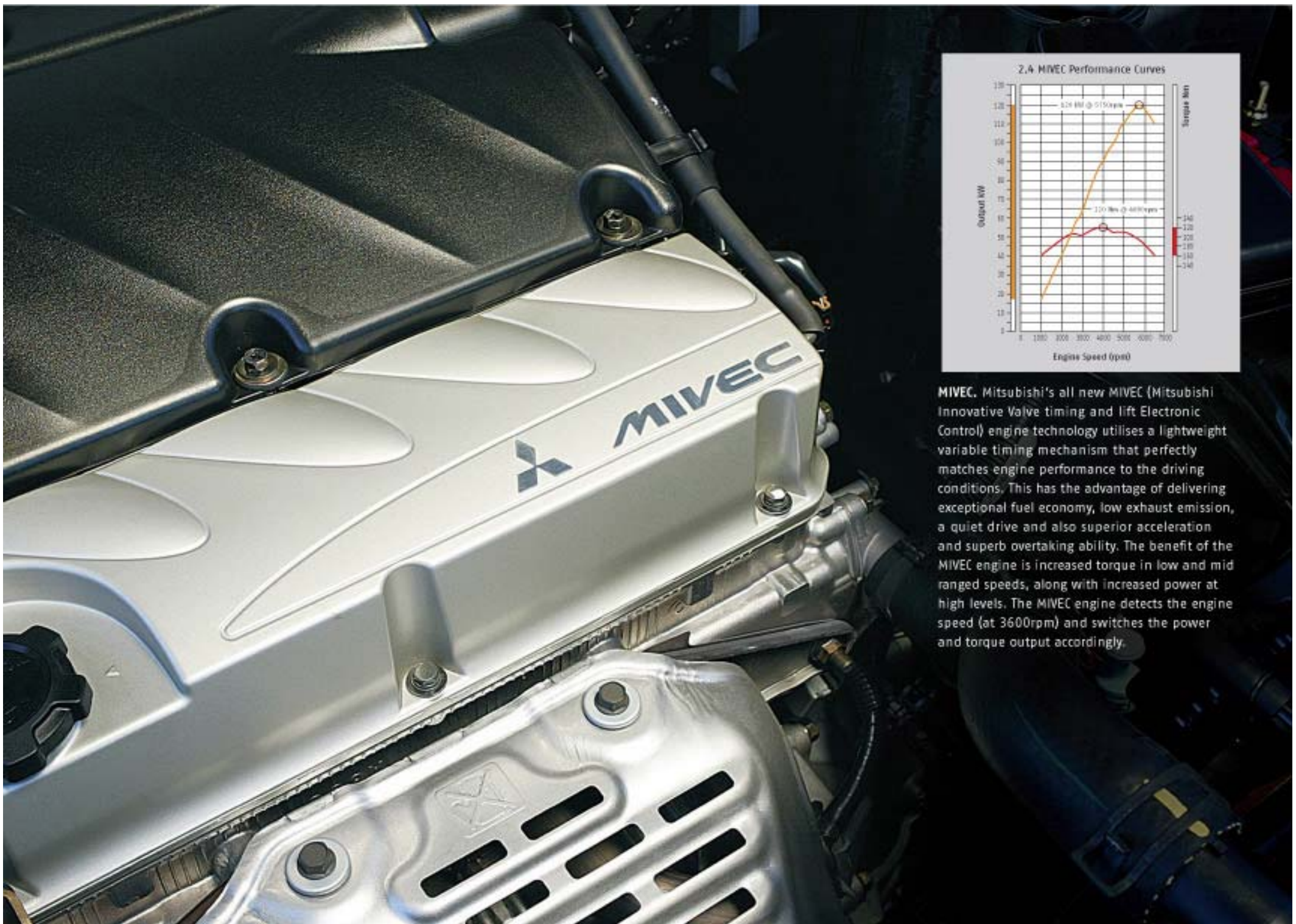


The exciting, sporty VR-X with distinctive leather and suede interior, unique aero inspired dash panel with carbon fibre look trim, driver and front passenger SRS, body coloured front and rear bumper, chrome scuff plates and alloy sports pedals.

VR-X available Sept. 04.

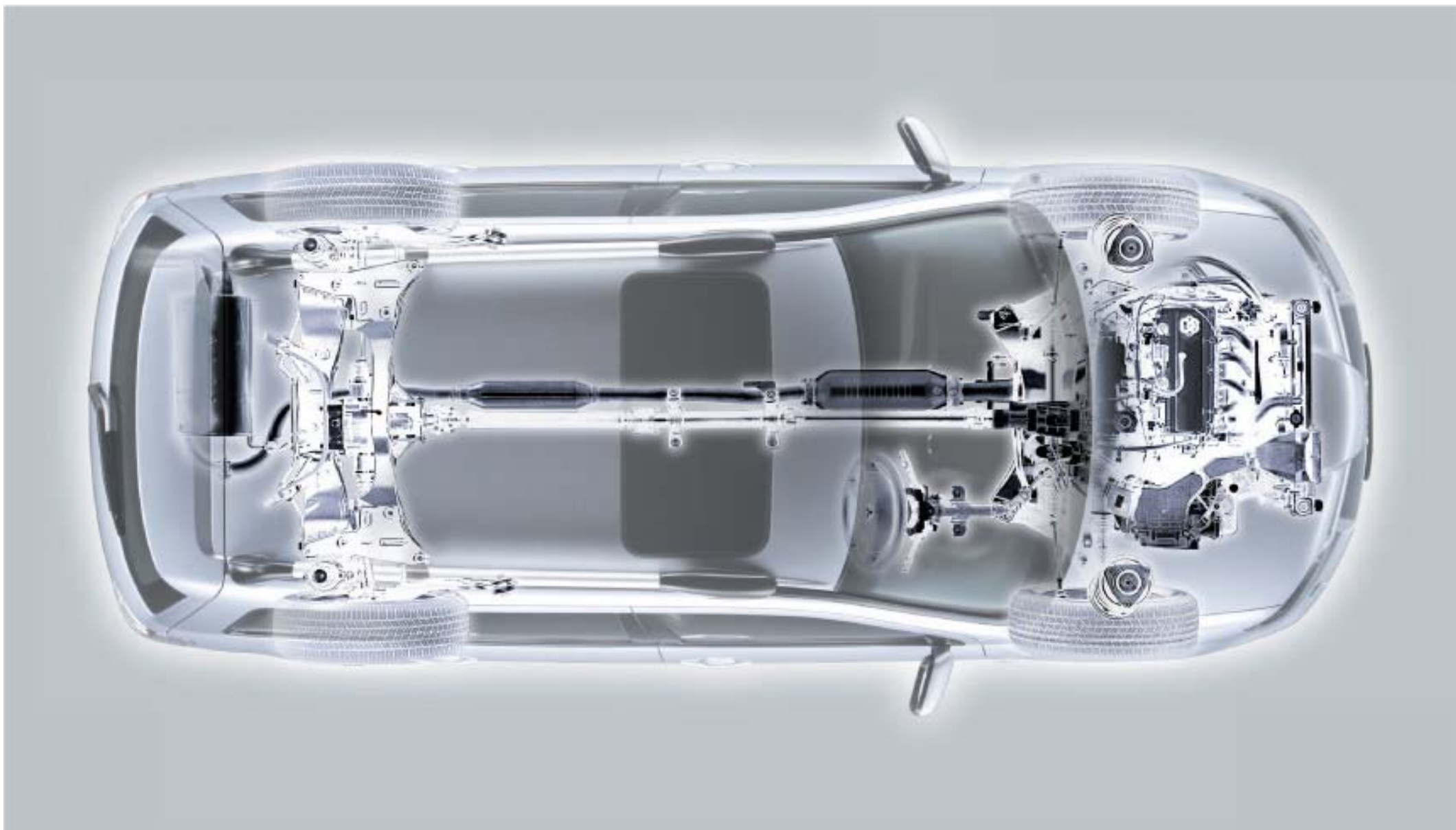




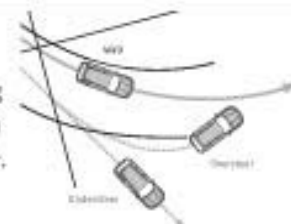


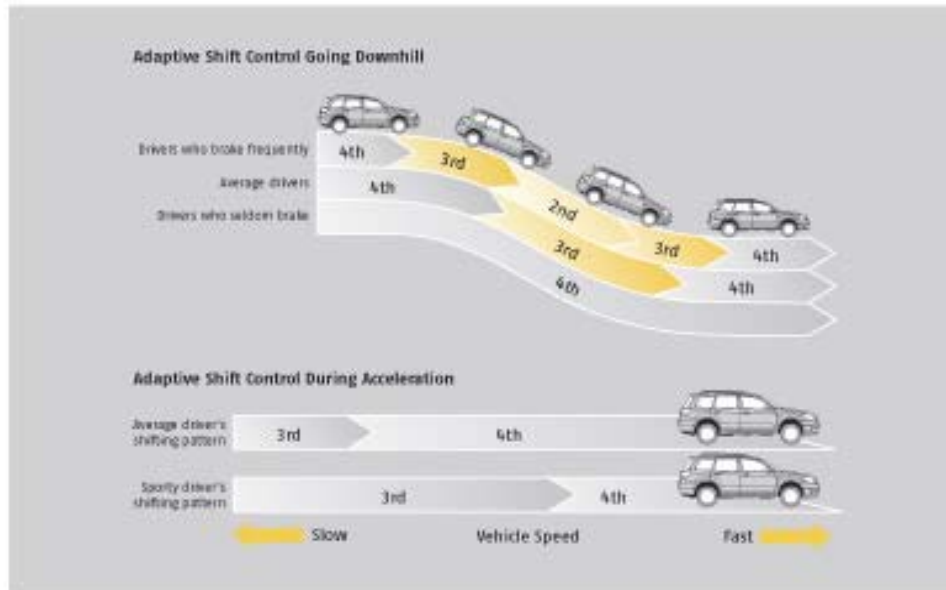
**MIVEC.** Mitsubishi's all new MIVEC (Mitsubishi Innovative Valve timing and Lift Electronic Control) engine technology utilises a lightweight variable timing mechanism that perfectly matches engine performance to the driving conditions. This has the advantage of delivering exceptional fuel economy, low exhaust emission, a quiet drive and also superior acceleration and superb overtaking ability. The benefit of the MIVEC engine is increased torque in low and mid ranged speeds, along with increased power at high levels. The MIVEC engine detects the engine speed (at 3600rpm) and switches the power and torque output accordingly.



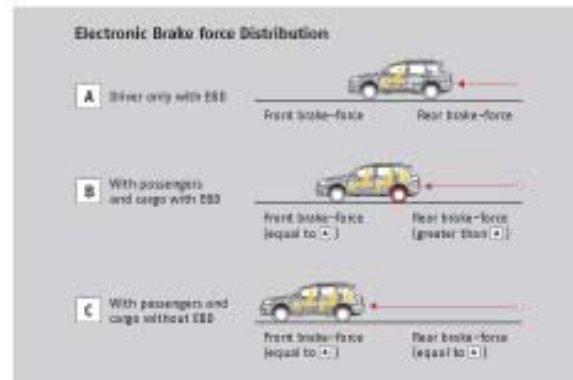
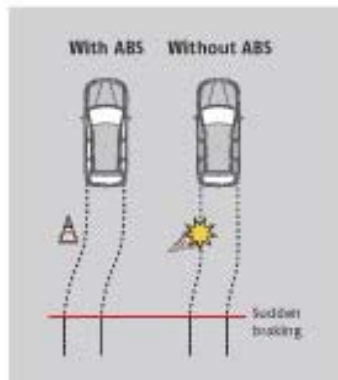


**Advanced 4WD System.** Using many elements developed through the famed rally-bred Mitsubishi Lancer Evolution range, the Outlander 4WD boasts superior roadholding and outstanding traction, which you can actually feel. The constant 4WD system features a centre differential which distributes torque evenly to all four wheels. If the system detects slip in any of the wheels the Viscous Coupling Unit (VCU) regulates the torque to ensure that the car continues to corner efficiently, maintaining stability and power.

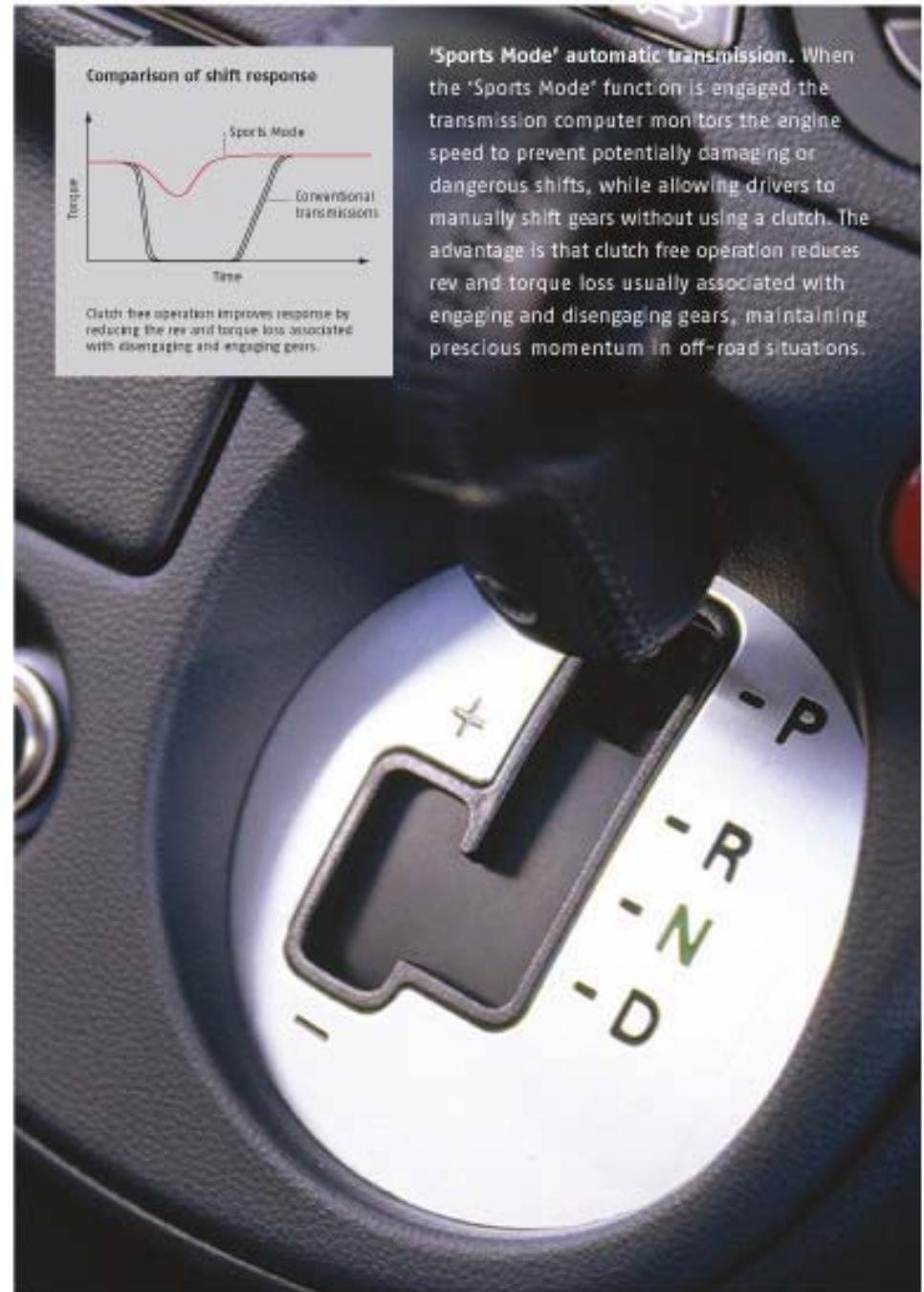




**INVECS II 'Smart Logic' automatic transmission.** To provide smoother shifting, the INVECS II 'Smart Logic' transmission system's on board computer records each driver's preferences through data such as engine, tyre load and foot braking. The control logic then adapts the gearshift timing to suit the driver's style, while minimising torque fluctuation for effortless acceleration and a more predictable ride.



**Greater control.** ABS with Electronic Brake force Distribution (EBD) is standard on all models and provides greater braking performance with the ability to steer around vehicles or obstacles in emergency braking situations regardless of road conditions.



**'Sports Mode' automatic transmission.** When the 'Sports Mode' function is engaged the transmission computer monitors the engine speed to prevent potentially damaging or dangerous shifts, while allowing drivers to manually shift gears without using a clutch. The advantage is that clutch free operation reduces rev and torque loss usually associated with engaging and disengaging gears, maintaining precious momentum in off-road situations.

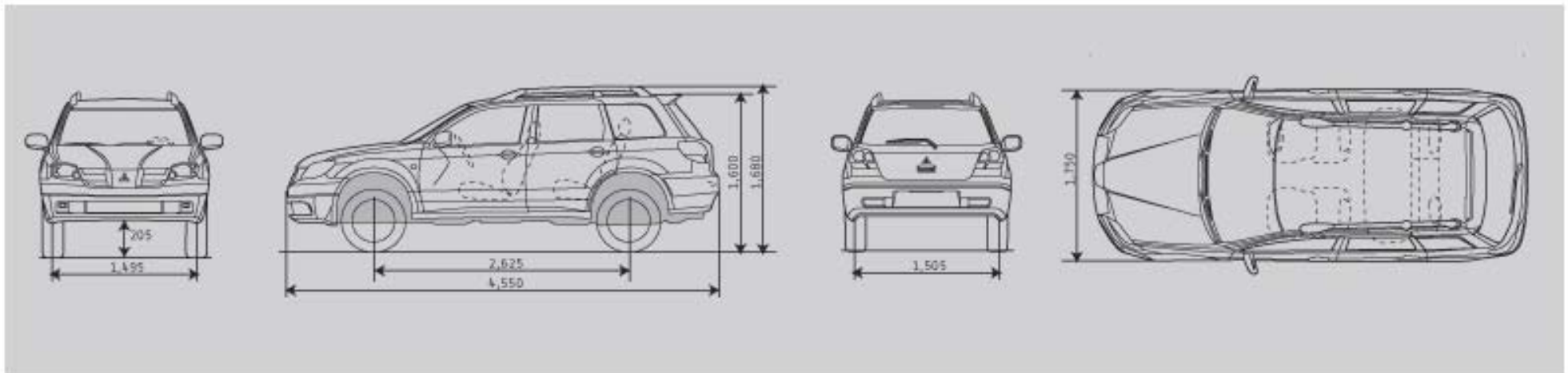




**Built with safety in mind.** Mitsubishi's Reinforced Impact Safety Evolution (RISE) monocoque body design combines an energy absorbing front section with a strong, rigid occupant cell to provide outstanding protection in the event of an accident.



**Cargo and passenger flexibility.** The clever design and 60:40 split fold second row seats allow for a wide variety of cargo and passenger configurations. Folding the seats forward creates one large space with the added flexibility of a completely flat floor. Or recline the passenger seat and remove the headrest to create a space capable of carrying items up to 2.4 metres in length.



**Generous dimensions.** Outlander has capitalised on its 2,625mm wheelbase with an impressively large cabin. Designers also carefully calculated the hip point to make entry and exit as easy as possible, while creating a wagon with generous ground clearance and sufficient height to deliver superior driver visibility.

## OUTLANDER SPECIFICATIONS

ENGINE	
Type	2.4 litre SOHC 16-valve MPI MIVEC (Insulator: Innovative string and lift electronic control)
Bore x stroke	87.0mm x 100.0mm
Capacity	2378cm <sup>3</sup>
Compression ratio	9.5:1
Fuel system	EI multi fuel inject
Maximum power (DIN)	120kW @ 5750rpm
Maximum torque (DIN)	220Nm @ 4000rpm
ELECTRICAL SYSTEM	
Battery	75D23L (520CCA/118RC)
Alternator	110 Amp
TRANSMISSION	
4 speed automatic transmission with 'SPORTS MODE' sequential style shift change and INVECS II 'Smart Logic'	
RATIOS	
First	2.842
Second	1.573
Third	1.000
Fourth	0.688
Reverse	2.214
FINAL DRIVE	
Final gear ratio	4.625
CLUTCH	
Automatic	3 element torque converter with lock-up
DRIVE TRANSFER SYSTEM	
Type	Constant 4WD
BRAKES	
Front	Ventilated discs
Rear	Discs
	Anti-lock Braking System (ABS) with Electronic Brake force Distribution (EBD)
SUSPENSION	
Front	Independent - MacPherson Strut coil spring with anti-sway bar
Rear	Independent - Multi-link coil spring with anti-sway bar
STEERING	
Type	Power assisted rack and pinion
WHEELS	
IS	16" x 6J steel - full wheel cover
XLS	16" x 6J alloy - 5 spoke
VR-X	17" x 6.5J alloy - 5 spoke
Spare	Full size spare tyre - with steel wheel
TYRES	
IS/XLS	215/60R-16 95H
VR-X	215/55R-17 94V

EXTERIOR DIMENSIONS (MM)	IS	XLS	VR-X
Overall height	1680	1680	1680
Overall length	4550	4550	4550
Overall width	1750	1750	1780
Track - front	1495	1495	1510
Track - rear	1505	1505	1520
Wheelbase	2625	2625	2658
Turning circle	11.4m	11.4m	11.4m
GROUND CLEARANCE			
Ground clearance (unladen)	205mm	205mm	205mm
Approach angle	21.4°	21.4°	21.4°
Departure angle	22.2°	22.2°	22.2°
Ramp angle	20.7°	20.7°	20.7°
INTERIOR DIMENSIONS (MM)			
Front leg room	1074	1074	1074
Rear leg room	902	902	902
Front head room	988	988	988
Rear head room	970	970	970
Front shoulder room	1425	1425	1425
Rear shoulder room	1382	1382	1382
Front hip room	1316	1316	1316
Rear hip room	1316	1316	1316
CAPACITIES			
Gross vehicle mass (kg)	2000	2000	2000
Kerb mass (kg)	1560	1580	1575
Payload (kg)**	440	420	425
Gross combination mass (kg)	3200	3200	3200
Maximum front axle load (kg)	1050	1050	1050
Maximum rear axle load (kg)	1065	1065	1065
Seating capacity	5	5	5
** Payload includes occupants, fuel and fitted options (if any). The weight of these must be deducted from Payload to determine actual load carrying capacity. Front and/or Rear Axle loads must not be exceeded.			
MAXIMUM TOWING CAPACITY*			
With trailer brakes (kg)	1200	1200	1200
Without trailer brakes (kg)	570	570	570
Lowball download (kg)	120	120	120
* Subject to State regulations and towbar design. For further information refer to the Outlander Owner's Manual.			
FUEL TANK CAPACITY			
Litres	60	60	60
FUEL CONSUMPTION			
ADR81/01 (litres per 100km)	10.1	10.1	10.1
These figures are obtained from controlled laboratory tests conducted by Mitsubishi Motors to Australian Standards ADR81/01 and are provided to assist you in comparing the fuel consumption of Outlander with other vehicles. The actual fuel consumption you achieve will depend, however, on many factors, including your driving habits, the prevailing conditions and your vehicle's equipment, condition and use.			



MECHANICAL			
Power Train	IS	XIS	VR-X
2.4 litre SOHC 'Balance Shaft' 16-valve MPI MIVEC	•	•	•
4 speed automatic transmission with 'SPORTS MODE' sequential style gearshift change and INVECS II 'Smart Logic'	•	•	•
Mechanical			
Constant AWD with Viscous Coupling Unit	•	•	•
Power steering	•	•	•
Power assisted brakes	•	•	•
Front - ventilated discs	•	•	•
Rear - discs	•	•	•
Anti-lock Braking System (ABS) with Electronic Brake force Distribution (EBD)	•	•	•
Engine immobiliser	•	•	•
Suspension			
Independent type - MacPherson Strut coil spring with anti-sway bar	•	•	•
Independent type - Multi-link coil spring with anti-sway bar	•	•	•
Sports tuned suspension	—	—	•

• standard — not available ◯ optional ♦ dealer fitted accessory

EXTERIOR			
Wheels and Tyres	IS	XIS	VR-X
16" x 6J steel wheels with full wheel covers, 215/60R-16 95H tyres	•	—	—
16" x 6J five spoke alloy wheels, 215/60R-16 95H tyres	—	•	—
17" x 6.5J five spoke alloy wheels, 215/55R-17 94V tyres	—	—	•
Exterior Styling			
Front grille - body colour	•	•	•
Mesh type upper radiator grille inserts	•	•	•
Body coloured front and rear bumpers (with light grey undertone)	•	•	—
Body coloured front and rear bumpers	—	—	•
Side skirts (with light grey paint undertone)	•	•	—
Body coloured side skirts	—	—	•
Projector style halogen headlamps	•	•	•
Darkened headlamp surrounds	—	—	•
Headlamp washers - retractable type (in bumper)	—	—	•
Fog lamps (iron)	—	•	•
Door mirrors - black (electrically controlled)	•	—	—
Door mirrors - body colour (electrically controlled)	—	•	•
Sensshade band on windshield	•	•	•
Windscreen wiper/washer with 2 speeds and speed sensitive variable intermittent function	•	•	•
Black door handles	•	—	—
Body colour door handles	—	•	•
Rear roof spoiler with integrated stop lamp	•	•	•
Roof rails - tube style (silver painted)	•	•	•
Clear lens type rear combination lamps	—	—	•
Tailgate wiper/washer with intermittent function	•	•	•
Rear mudflaps	•	•	•
Chrome exhaust extensions	—	—	•

• standard — not available ◯ optional ♦ dealer fitted accessory

## OUTLANDER SPECIFICATIONS

INTERIOR				
Audio	LS	XLS	VR-X	
Security coded AM/FM Radio/CD player	•	•	—	
Premium security coded AM/FM Radio/CD player	—	—	•	
In-dash 6 CD Stacker	○	•	•	
Roof mounted antenna	•	•	•	
No. of Speakers	4	6	6	
Interior Styling				
Aero inspired dash panel with silver insert trim	•	•	—	
Aero inspired dash panel with carbon fibre look trim	—	—	•	
Console mounted gearshift lever	•	•	•	
Leather wrapped gearshift knob	—	•	•	
4 spoke urethane steering wheel	•	—	—	
4 spoke leather wrapped steering wheel	—	•	•	
Parking brake (foot pedal type)	•	•	•	
Silver power window switch panel surrounds - front and rear	•	•	•	
Inner door handles - black	•	•	—	
Inner door handles - chrome	—	—	•	
White face instrument dials with chrome bezels and white face analogue clock	•	•	•	
Scuff plates - chrome (front only)	—	—	•	
Fully lined floor carpet	•	•	•	
Matching carpet mats with VR-X embroidery	—	—	•	
Alloy foot pedals	—	—	•	
Safety				
Driver and front passenger SRS airbags	•	•	•	
Side SRS airbags	○	•	•	
Driver and passenger seatbelts with force limiters and pretensioners	•	•	•	
Second row seatbelts with force limiters (including "lap sash" seatbelt for second row middle seat)	•	•	•	
Anti-lock Braking System (ABS) with Electronic Brake force Distribution (EBD)	•	•	•	
Day/Night rear view mirror	•	•	•	
Side door impact beams	•	•	•	
Child proof rear door locks	•	•	•	
Emergency door unlock function on impact	•	•	•	
INTERIOR Seating				
Cloth seat trim	•	—	—	
Luxury cloth seat trim	—	•	—	
Leather and suede alcantara trim	—	—	•	
Front Seats				
Sports style bucket seats with added side bolster support	—	—	•	
Height adjustable driver's bucket seat	•	•	•	
Height adjustable seatbelt anchors	•	•	•	
Height adjustable head rests - solid type	•	—	—	
Height adjustable see through type headrests	—	•	•	
Driver's seat armrest - Inbuilt and adjustable for height	•	•	•	
2nd row seats				
60:40 split folding function	•	•	•	

Comfort and Convenience	LS	XLS	VR-X	
Air conditioning	•	•	•	
Power windows front and rear with driver auto down function and key-off power delay	•	•	•	
Electric sunroof - tilt and slide function	—	○	○	
Cruise control	•	•	•	
Central door locking (including tailgate) with remote integrated key entry	•	•	•	
Electric door mirrors	•	•	•	
Surrounds with vanity mirror and lid - driver and passenger	•	•	•	
Tilt adjustable steering column	•	•	•	
Driver's foot rest	•	•	•	
Interior lamp with map reading lamps	•	•	•	
Variable instrument lighting dimmer	•	•	•	
Ignition key illumination	•	•	•	
Headlamps "ON" - audible warning buzzer	•	•	•	
Analogue instrumentation includes speedometer, tachometer, fuel gauge and water temperature gauge	•	•	•	
Automatic position indicator in instrument cluster	•	•	•	
Warning lamps include door and tailgate ajar, low fuel and seatbelts	•	•	•	
Digital trip meter	•	•	•	
Passenger assist grab handles	•	•	•	
Remote fuel filler door release	•	•	•	
Rear window demister	•	•	•	
Security				
Central door locking (inc. tailgate) with auto relock function	•	•	•	
Cabin illumination on unlock	•	•	•	
Automatic cabin illumination on key removal	•	•	•	
Flashing security lamp in security coded radio	•	•	—	
Storage				
Floor console box with lid	•	•	•	
Front cup holders - concealed type (in floor console)	2	2	2	
Rear seat cupholders (in centre seat armrest)	2	2	2	
Seat back pocket - driver and front passenger seat	•	•	•	
Front door trim map pockets	•	•	•	
Tailgate inside grip handle	•	•	•	
Glove box with illumination	•	•	•	
Coat hooks	2	2	2	
Coin tray in floor console	•	•	•	
Accessory socket	•	•	•	
Fully trimmed luggage area and tailgate	•	•	•	
Convenience lamp in cargo area	•	•	•	
Cargo blind	•	•	•	
Cargo tie-down hooks	4	4	4	

• standard — not available ○ optional ◆ dealer fitted accessory





White Pearl DW



Cool Silver Metallic CE



Effect Grey FB



Code Red FY  
(VR-X only)



Wine Red Metallic CF



Black Mica CL



LS seat trim



XLS seat trim



VR-X seat trim

#### PAINT AND TRIM COMBINATIONS

MONOTONE COLOURS	CODE	LS CLOTH	XLS LUXURY CLOTH	VR-X LEATHERSUEDE
Cool Silver Metallic	CE	•	•	•
Wine Red Metallic	CF	•	•	—
Effect Grey	FB	•	•	•
White Pearl	DW	•	•	—
Black Mica	CL	•	•	•
Code Red	FY	—	—	•

• standard — not available

colour range engineered to excite



Mitsubishi is committed to complete customer satisfaction. Therefore, when Genuine Mitsubishi Accessories are fitted to your new vehicle at time of delivery, they are covered by the Mitsubishi New Vehicle 3 year/100,000km Warranty. When they are fitted after you have purchased your new vehicle they are covered for the remainder of the new vehicle warranty or for 12 months/20,000km, whichever is the longer. In the case of Diamond Spectrum Accessories, the Warranty is 12 months/20,000km. Please check with your Mitsubishi dealer for specific model applications.

\*Diamond Spectrum Accessories. Pictures are shown for illustration purposes and may not be product specific.

**outlander accessories** engineered to excite





### Verada

The distinctive Verada continues to set the benchmark in quality and refinement. Verada comes with all the features standard on Magna, plus a ten-way adjustable power driver's seat, traction control and a premium audio system with 6 disc, in-dash CD changer. Verada models include Ei (sedan and wagon), Xi, GTVi and AWD which boasts outstanding stability, superior roadholding and improved cornering control for safer, more spirited driving.



### Magna

The Magna features an impressive line up of standard features including driver, front passenger and side airbags, six-way adjustable power driver's seat, cruise control, climate control air conditioning and power windows. In addition, VR-X and VR boast new street smart styling including new seat trims, sports style instruments and a leather wrapped steering wheel, combined with the powerful performance of the 163kW engine. The Magna line up includes ES, LS, VR, VR-X. Wagon variations in ES, LS and VR.



### Magna AWD and VR-X AWD

While echoing the styling of the Magna range, these models boast Mitsubishi's technically advanced QuadTec™ AWD system. This refined AWD system distributes torque equally to all four wheels, especially in low traction conditions, to deliver superior road holding, outstanding stability and improved cornering control. Magna AWD and VR-X AWD are also fitted with high performance brakes in conjunction with ABS and EBD to provide superior stopping power on all surfaces.



### Challenger

A luxurious and sporty all terrain 4WD with advanced aerodynamic styling and superior ride comfort. Features a 3.0 litre V6, LPG compatible 24 valve multi-point fuel injected engine with an impressive maximum towing capacity of 2270kg.



### Pajero

An undisputed off road rally champion, Pajero delivers superior off road performance through Mitsubishi MATT™ All Terrain Technology, available across the range. Its renowned reliability, generous interior space and superior safety is complemented by the powerful 3.8 litre V6 24 valve fuel injected engine, with the option of a 3.2 litre intercooled turbo direct injection diesel (Di-D). Pajero also boasts a maximum towing capacity of 2500kg.



### Triton

A tough, hard working ute available in a range of powerful engine capacities and fuel types. The range of Triton models includes Cab Chassis, Double Cab and Club Cab.



**Lancer**

The CH Lancer takes Mitsubishi's rally-bred technology to the city streets in a distinctive look with a host of great features. The sporty VR-X, with its bold rear spoiler and black interior, boasts 16" alloy wheels, a strut brace for greater handling and 4 speed automatic transmission with 'SPORTS MODE' sequential gearshifting for hands on control from the EVO type 'Steermatic' 3-spoke steering wheel.



**Grandis**

An all new breed of multi-purpose vehicle, Grandis offers both function and freedom. Comfortably seating seven adults, the sporty exterior is powered by an advanced 2.4L MIVEC engine incorporating variable valve timing to deliver optimum performance in any driving conditions.



**Express**

One of Australia's favourite light commercial vans, Express features a choice of petrol engines that are LPG compatible. The range of body types includes Short Wheel Base (SWB), Medium Wheel Base (MWB), Window Van (SWB) and Walk-Thru model (MWB).



**Colt**

The Colt has big car performance and substance, wrapped in small car agility. It has Mitsubishi's all new sporty 1.5 litre MIVEC engine, CVT (Continuous Variable Transmission) that provides improved economy and performance and smoothness. The Colt line up includes LS and the sporty XLS.

### Diamond Finance

Take the burden out of financing your new Mitsubishi vehicle with our competitive, reassuring and completely flexible range of finance products developed by Mitsubishi Motors Australia Ltd and St.George Motor Finance Limited.

### Diamond Leasing

Our tailored fleet leasing services offer innovative, highly competitive features such as card purchasing, roadside assistance, specialist maintenance services, accident and claims management, optional insurance and more.

### Diamond Road Side Assist

Peace of mind is guaranteed anywhere in Australia, 24 hours a day, 365 days a year with our fast, comprehensive, flexible roadside service offering assistance, repairs, towing and storage. Our Premium Roadside Assist clients also enjoy the added benefits of accommodation, medical and transport facilities.

### Diamond Insurance

With the sound backing of Swann Insurance and Mitsubishi Motors Australia Ltd, Mitsubishi owners can choose between vehicle and personal protection solutions including motor vehicle, gapcover and loan protection insurance as well as a range of tailored warranty policies.

For more information on Diamond Products and Services contact your Mitsubishi Dealer.

**mitsubishi range** engineered to excite





The Mitsubishi Outlander is a compact Four Wheel Drive, offering a unique combination of sports styling and active, dynamic handling, flexible interior space, ride comfort and unprecedented safety. With constant 4WD, Outlander is ideal for safe urban driving, while also delivering superior handling on uneven country roads. Dynamic exterior styling is reflected in the aggressive lines, bold front grille design and European influenced body shape.