

# CR-V



**HONDA**  
The Power of Dreams

Honda Australia Pty. Ltd. ACN 004 759 611 ABN 66 004 759 611  
95 Sharps Road, Tullamarine, Victoria, 3043  
Melbourne (03) 9285 5555 Brisbane (07) 3260 4888  
Sydney (02) 8748 3333 Perth (08) 9450 8207  
Freecall 1800 804 954 [honda.com.au](http://honda.com.au)

The fuel consumption figures quoted in this brochure are based on ADR81/01 test results. You may experience different results depending on driving conditions and the condition of the vehicle. The specifications and major features listed herein are accurate as at the date of printing (December 2005/06 YM). However, Honda Australia Pty. Ltd. reserve the right to change or modify specifications and major features at any time without prior notice. Due to ordering, shipping and freight factors, some colour and model availabilities may vary from time to time. Check with your Honda Dealer for current information on availability. Only Genuine Honda Accessories are made to fit Honda vehicles. For a Genuine Honda Accessory brochure contact your Honda Dealer or Honda Australia on 1800 804 954. CR-V Sport model shown on cover.

1026114



# WELCOME TO THE TOUGH CR-V

The CR-V has evolved. It's slick. It's tough. And it's ready to go. From the urban jungle to the great outdoors, this is a car built for the drive. With the unstoppable combination of rugged good looks and unyielding energy, the CR-V is a flexible all-rounder that loves to get away.

## Welcome to the tough CR-V.

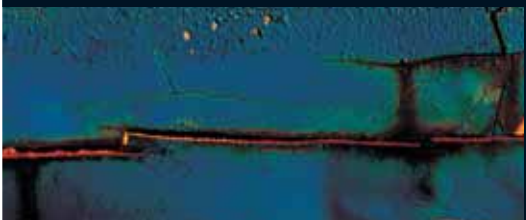
The Honda CR-V has been created to take you wherever your road may lead you.

There are three models; the CR-V, CR-V Extra and the CR-V Sport. All are gutsy performers with strong, clean lines and a trademark rugged exterior. The stylish, square, back tail light section remains, a trademark of the CR-V stable. Tough but stylish, that's the CR-V.

All three models come with air conditioning, ABS (Anti-lock Brakes), power windows, dual front SRS airbags, keyless entry, cruise control and a security alarm. Plus, the CR-V Extra and CR-V Sport also boast 16" alloy wheels, driver and front passenger side SRS airbags and their own distinctive decal. What's more, the Sport model even includes an electric sunroof, coloured bumpers and side protectors, 6 CD stacker with MP3, a hard spare wheel cover and front fog lights. And just to prove that tough can also be luxurious, a Leather Trim Option Pack<sup>1</sup> is also available on the CR-V Sport.



CR-V model shown.





CR-V Sport model shown.

# A TOUGH PERFORMER

## Taming the road.

While the road beneath you may be anything but stable, your CR-V is agile enough to handle it effortlessly. A refined suspension delivers the kind of comfort and sophisticated handling you'd expect of an up-market passenger car. Additionally, the toe-link strut front suspension offers impressive stability, regardless of the track below.

In the rear, you'll find a reactive link double wishbone suspension, which ensures a smooth ride and delivers increased control during braking. Giving you more control on and off the road.

Yet the suspension does not take up too much room. Such economy of scale allows for greater roominess in the passenger cabin.

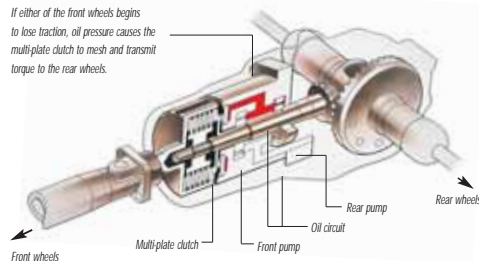
To further enhance stability, the CR-V enjoys a low centre of gravity. This, along with a wide tread, ensures exceptional driveability.

## RealTime 4WD that thinks for you.

Imagine a 4WD that reads the road and adjusts accordingly. Honda's exclusive dual pump RealTime 4WD delivers exactly that. Now even

tougher, it senses any change in conditions and reacts immediately. Should the front wheels' grip decrease, the system automatically engages the rear wheels, providing additional torque and traction. Put simply, RealTime 4WD provides an uncompromising driving performance, particularly on surfaces such as snow. Leaving the surprises for the road ahead, not on the road itself.

If either of the front wheels begins to lose traction, oil pressure causes the multi-plate clutch to mesh and transmit torque to the rear wheels.



## Gutsy towing power.

The CR-V boasts impressive pulling power. So if need be you can confidently tow a boat, trailer or caravan. In fact the manual can tow up to 1500 kg<sup>▲</sup> whilst the automatic can pull 1200 kg<sup>▲</sup> (using a twin axle trailer with brakes).

The amount of down force that can be applied to the CR-V's tow ball is 150 kg for the manual and 120 kg for the automatic, using a Honda genuine accessory towbar. Of course the best way to accessorise your CR-V is by using genuine Honda parts. You'll find these, and valuable advice on all your towing needs from your local Honda Dealer.

## Tight handling in tight situations.

The CR-V is designed for driver flexibility. With a shortened nose design, the CR-V's turning circle is 10.6 metres. So it's easily manoeuvred out of any tight situation. Or into one, if you prefer.

And should a new path beckon, the CR-V's high ground clearance helps when you most need it.

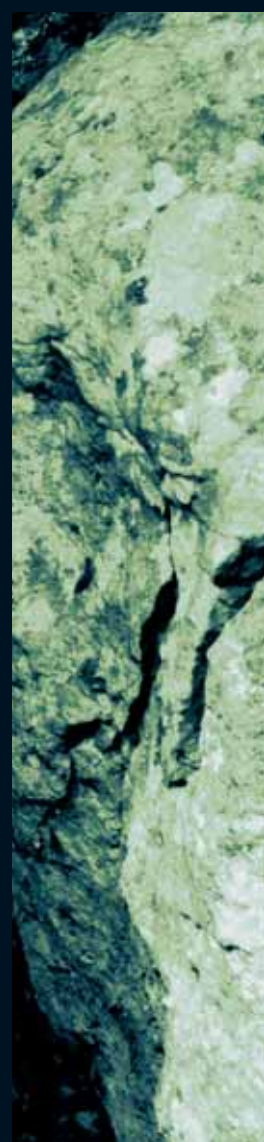
## A tough approach to braking.

When you expose yourself to the elements you must always be prepared for the worst.

A braking system that is second to none will ensure you're in the best hands. The CR-V comes with standard four-wheel disc brakes, finely tuned for a split second response. The integration of ABS (Anti-lock Brakes) provides even further security. And when you have a heavy load, the Electronic Brake Force Distribution (EBD) kicks into gear, evenly dividing brake force between front and rear wheels.

When you set out into the wilds it's reassuring to know you have a strong support system in place, just in case the journey takes an unexpected turn.

<sup>▲</sup> Conditions apply - refer to owner's manual.



# RUGGED ON THE OUTSIDE SOFT ON THE INSIDE

## Designed around you.

The uncompromising build of the CR-V belies its plush, roomy interior. The CR-V is designed to keep you in comfort and control at all times. The commanding vantage point helps to ensure that you see everything around you. And for precision driving, the instrument panels are not only easy to read, but also very easy on the eye. The centre console is also configured for convenience, with large controls adjustable with a single touch.

Increasing your convenience, the CR-V dashboard now lights up as soon as the door is unlocked, further illuminating as the ignition is engaged. The CR-V Sport even comes with an electric sunroof for additional natural light.

## Sound to behold.

The CR-V's upgraded audio system plays your favourite CDs and, in the Sport model, MP3s. Sound is in stereo and is delivered through

four strategically positioned speakers. For ease of operation, audio controls have been mounted on the steering wheel. So changing a music track needn't mean losing track.

## Escape to the wide, open spaces.

Everything about the CR-V is designed in the pursuit of freedom. Including its expansive interior. Renowned for its economical use of space, the CR-V's broad passenger cabin seats five adults comfortably. Feel free to move, swing and stretch out with ample elbow and leg room and a flat floor.

The generous cargo space is further enhanced by seats that double-fold-down to allow for additional luggage. Split rear seats slide individually, providing rear seat passengers with extended legroom. Flexibility of seating positions allows for large and long items such as mountain bikes, fishing rods, skis, surfing and camping gear.

Should you need to restrain any of these items, inner roof rails, tie down hooks and cargo hooks are included. That way, when the going gets tough outside, it needn't cause problems on the inside.

A seatback pocket has been included, which is handy for maps and directories, and a luggage cover allows for security of possessions at all times.

## Thinking that's tough to beat.

The CR-V is designed to take you to the great outdoors. And to take you there in comfort. Your every whim has been catered for. Storage trays and pockets at the front and rear seats are easily accessible. Additional storage areas have been included in the cargo area. All three models even have a foldaway centre tray positioned between the front seats. In fact, the Auto model also has four cup holders and passenger armrests in the rear and front, which accommodate long distance travel well. A hollowed area in the boot allows for storage of wet clothes should your spirit of adventure lead you into inclement weather. And the power outlet near the tailgate is ideal for those weekends when you decide to drive as far away from the city as possible, and attempt to inhabit the uninhabitable.

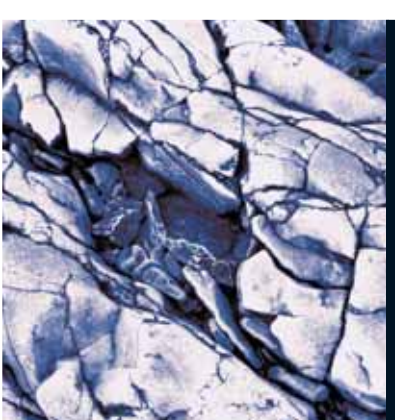
And the CR-V isn't too rough and ready to appreciate the finer things in life: the handy fold-out picnic table in the cargo bay is ideal for an impromptu meal wherever and whenever the urge strikes you.

CR-V Sport model shown with  
Leather Rim Option Pack!



CR-V Sport model shown





CR-V Extra model shown.

# ROCK SOLID PERFORMANCE

## Muddy roads.

When it comes to getting down and dirty, the CR-V does not disappoint. Featuring a gutsy 118 kW, 2.4 litre i-VTEC engine, it has the power, performance and persistence to take you where you want to go.

This advanced engine produces exceptional torque, highly responsive performance across the entire rev range and strong acceleration. To make sure the outer elements don't affect the comfort of your passengers a clever secondary balancer shaft minimises engine vibration. The drive-by-wire throttle ensures a smoother and more instantaneous response to accelerator pedal inputs. Making a getaway lightning fast. Your CR-V has the grunt to take on the world.

## Tough on back roads, not on back pockets.

Thanks to its revolutionary i-VTEC engine, the CR-V is big on power yet small on fuel consumption. Making unpredictable fuel prices another obstacle we've overcome.

## Easy on the environment.

The environment is probably the only thing the CR-V is soft on. With Honda's advanced Low Emission Vehicle (LEV) technology, engine efficiency is increased at every stage of the combustion process. The CR-V was created to respect the great outdoors.

## The perfect gear for the road ahead.

The CR-V offers two transmission types to choose from. There's the five speed manual or the electronically controlled five speed automatic transmission.

Honda's unique Grade Logic Control system constantly measures vehicle speed against engine load, whilst the auto transmission allows it to compute the ideal shift pattern for the road ahead. For example, uphill changes are minimised and a lower gear is held for effective

engine braking when travelling downhill. When the CR-V is first started, overdrive is on. This can be cancelled at any time with a switch at the tip of the shift lever. Should you require engine braking when running in 5th gear you can easily change from 5th to 4th by flicking this switch.

Sunday driving has never been so much fun.

# TOUGH PROTECTION

## Built safe.

Accidents can happen.

When it comes to protecting people inside and outside the car, we've stopped at nothing to provide the most advanced safety technology available.

Advanced technology is included in order for you to steer clear of potential trouble. ABS (Anti-lock Brakes) is standard. It allows for greater steering control in the event of an emergency. The improved driving position, along with strong, multi-reflector halogen headlights help you see everything ahead.

Honda's exclusive G-Force Control (G-Con) technology enhances passenger shielding by controlling collision forces of the vehicle in the event of an accident. This works by cushioning impact energy, which safeguards the cabin, and more importantly, the passengers within.

Built tough, the CR-V has an all-direction energy absorbing body,

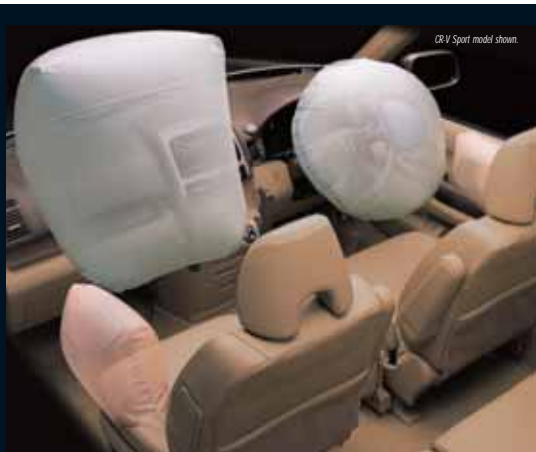
which combines a rigid cabin with energy absorbing front and rear structures. This results in a crush-proof survival zone for occupants.

The driver and front passenger seats have dual SRS airbags. The CR-V Extra and CR-V Sport also include side SRS airbags for front passengers.

At the front and rear you'll find three point seatbelts in all seating positions. The front seats have pretensioner and load-limiter systems for additional safety.

The front bumper and bonnet are ergonomically designed to minimise injury to pedestrians in the event of a collision. A lower bumper beam and a wide frame also help lower the chance of riding up over a sedan in a collision.

All of which confirms that the tough CR-V is a hard nut to crack, whichever way you look at it.



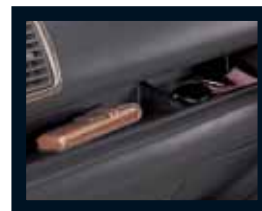
Rear parking mirror



Roof box



Chrome mirror cover



Rubber dash tray



Roof spoiler



Tow bar and chrome tow ball  
(Sold separately)



Body cover

## Accessories

To add your own signature to your CR-V, consider Honda's sensational range of interior and exterior accessories. For full warranty protection and quality Honda fitment, make sure you choose your accessories when you choose your CR-V.

# TOUGH LOVE



CR-V Sport model shown.

## Complete care.

The CR-V was built to be driven. That's why we put just as much work into providing the world's finest after sales service.

As a new CR-V owner, you're entitled to access our after sales website, HondaONE. Updating you with an on-line service history, personalised service reminders and vehicle maintenance tips, HondaONE allows you to view your vehicle records with a simple click of a mouse.

And nobody can service and tune your car like we can. Hondas have such precise engineering that we use specialist, high-tech equipment. To maintain the value of your CR-V, it should always have regular services and it always pays to insist on Honda Genuine Parts.

Every new Honda motor vehicle comes with our 3-year, 100,000 km warranty. This includes a 3-year surface corrosion warranty and a 6-year rust perforation warranty. We're committed to providing prompt service in a professional manner at the time of purchase and throughout your ownership. In fact the entire Honda Dealer network is dedicated to keeping your new Honda at peak performance, so your CR-V can keep taking you even further away.

Honda Dealer staff and technicians are factory trained and keep up to date with the most advanced technologies by attending ongoing seminars and training courses. Every Honda Dealer maintains a comprehensive inventory of Genuine Parts and has access to a central warehouse via the Hondanet computerised order/supply system, so Genuine Parts can be promptly delivered anywhere in Australia.

To ensure only the highest standards are maintained, we have strict requirements of a person or entity wishing to open a Honda Dealership. With this back-up, you can feel safe in the knowledge that after you get down and dirty with your CR-V, we will too.

## The Honda Way.

"Our pledge to a unique experience."

When you purchase a Honda, we dedicate ourselves to a standard of sales and after sales service that is consistent with the outstanding quality of our products.





CR-V model shown.



	CR-V	CR-V Extra	CR-V Sport
<b>Powertrain</b>	Engine	Inline 4 cylinder	Inline 4 cylinder
		DOHC i-VTEC with VTC	DOHC i-VTEC with VTC
	Capacity	2.4 litre - 2354 cc	2.4 litre - 2354 cc
	Max power	118 kW @ 6000 rpm	118 kW @ 6000 rpm
	Max torque	220 Nm @ 3600 rpm	220 Nm @ 3600 rpm
	Control system	Honda Programmed	Honda Programmed
		Fuel Injection (PGM-FI)	Fuel Injection (PGM-FI)
	Manual transmission	5-speed	5-speed
	Automatic transmission	5-speed with Grade Logic Control	5-speed with Grade Logic Control
	RealTime 4WD system	✓	✓
	Fuel type	Unleaded	Unleaded
<b>Chassis</b>	Body type	Monocoque	Monocoque
	Front suspension	Strut	Strut
	Rear suspension	Double wishbone	Double wishbone
	Stabilizer bars	Front & rear	Front & rear
	Power steering	✓	✓
	Wheel type	Steel	Alloy
	Spare wheel type	Full size steel	Full size alloy
	Front brakes	Vented disc	Vented disc
	Rear brakes	Disc	Disc
<b>Exterior</b>	Bumpers	Dark grey	Body coloured
	Front fog lights	■	✓
	Front wiper	2-speed & intermittent	2-speed & intermittent
	Headlights	Halogen type	Halogen type
	Keyless entry	✓	✓
	Power door mirrors	Black	Body coloured
	Rear window demister	✓	✓
	Rear wiper	✓	✓
	Side protectors	Dark grey	Body coloured
	Spare wheel cover	Soft type	Hard type
	Sunroof	-	Electric
<b>Interior</b>	Accessory power outlet	✓	✓
	Air conditioning	✓	✓
	Ashtray	✓	✓
	Cargo restraint hooks	✓	✓
	Centre tray table	Auto only	Auto only
	Central locking	✓	✓
	Cruise control	✓	✓
	Cup holders	2 x front / 2 x rear	2 x front / 2 x rear
	Dashboard warning lights	Comprehensive array	Comprehensive array
	Digital clock	In radio	In radio
	Door pockets	Front & rear	Front & rear
	Driver's footrest	✓	✓
	Driver's seat height adjuster	✓	✓
	Driver's window	Auto up / down	Auto up / down
	Front seat armrests	Auto only	Auto only
	Front seat back pockets	Driver & passenger side	Driver & passenger side
	Glovebox	✓	✓
	Head restraints - front	Adjustable	Adjustable
	Head restraints - rear	Adjustable	Adjustable
	Interior illumination	Cargo area	Cargo area
	Interior illumination	Courtesy light	Courtesy light
	Interior illumination	Map light	Map light
	Lights-on warning	Audible	Audible
	Low fuel warning	✓	✓
	Luggage cover	✓	✓
	Outside temperature display	✓	✓
	Picnic table	✓	✓
	Power windows	✓	✓
	Seats - front	Fully reclining	Fully reclining
	Seats - rear	60 / 40 split with double fold down	60 / 40 split with double fold down
	Cloth trim	✓	✓
	Leather Trim Option Pack <sup>1</sup>	-	■
	Seatbelt height adjuster	Front	Front
	Steering column	Tilt adjustable	Tilt adjustable
	Tachometer	✓	✓
	Tripmeter	x 2	x 2
	Vanity mirrors	Driver & passenger	Driver & passenger
	Wet item storage area	✓	✓
	Windows	Heat absorbing	Heat absorbing

	CR-V	CR-V Extra	CR-V Sport
<b>Safety Features</b>	Airbag SRS - front	Driver & passenger	Driver & passenger
	Airbag SRS - side	-	Driver & front passenger
	Anti-lock Brakes (ABS)	✓	✓
	Child safety seat anchorages	x 3	x 3
	Convex door mirror	Passenger side	Passenger side
	Front windscreen	Laminated	Laminated
	Fuel tank roll over valve	✓	✓
	Hazard warning lights	✓	✓
	High mounted stop light	✓	✓
	Honda G-Con technology	✓	✓
	Immobiliser system	✓	✓
	Progressive crumple zones	Front & rear	Front & rear
	Rear view mirror	Day / night type	Day / night type
	Screw type fuel cap	✓	✓
	Seatbelt & buckle pretensioners	Driver & front passenger	Driver & front passenger
	Seatbelt reminder	Driver	Driver
	Seatbelt webbing clamps	✓	✓
	Seatbelts - 3 point ELR	x 5	x 5
	Security alarm system	✓	✓
	Side impact protection	✓	✓
	Steering column	Energy absorbing type	Energy absorbing type
	Transmission shiftlock	Auto only	Auto only
<b>Dimensions</b>	Length	4610 mm	4630 mm
	Width	1785 mm	1785 mm
	Height	1710 mm	1710 mm
	Ground clearance - laden	170 mm	170 mm
	Weight - tare man	1470 kg	1490 kg
	auto	1500 kg	1520 kg
	Turning circle	10.6 m	10.6 m
	Fuel economy - combined (Litres / 100 km)	9.5 man / 10.0 auto	9.5 man / 10.0 auto
	Fuel tank capacity	58 litres	58 litres
	Wheel size	16 x 6.5 JJ	16 x 6.5 JJ
	Tyre size	215 / 65 R16 98T	215 / 65 R16 98T
	Maximum towing capacity -		
	trailer with brakes	1500 kg man / 1200 kg auto	1500 kg man / 1200 kg auto
	trailer without brakes	600 kg	600 kg
	Towing downforce	150 kg man / 120 kg auto	150 kg man / 120 kg auto
	Seating capacity	5	5
<b>Audio</b>	AM/FM radio, single CD tuner	✓	✓
	AM/FM radio, 6 CD tuner with MP3	-	✓
	Steering wheel mounted audio controls	✓	✓
	Front speakers	2	2
	Rear speakers	2	2
	Antenna	Micro style	Micro style
<b>Colours</b>	<b>Exterior</b>	<b>Interior</b>	<b>Interior</b>
	Taffeta White	Ivory	Ivory
	Premium White Pearl	-	Ivory
	Alabaster Silver Metallic	Black	Black
	Nighthawk Black Pearl	Black	Black
	Cosmic Grey Pearl	Black	Black
	Light Opal Metallic	Ivory	Ivory
	Royal Ruby Red Pearl	Black	Black

\*Metallic/Pearlescent paint extra. <sup>1</sup>Leather interior includes some PVC vinyl material.

✓ Standard equipment ■ Optional - Not available

