

THE NEW GENERATION **CIVIC HYBRID**



THE NEW GENERATION **CIVIC HYBRID**

BIG IMPACT ON YOU, LESS IMPACT ON THE ENVIRONMENT.

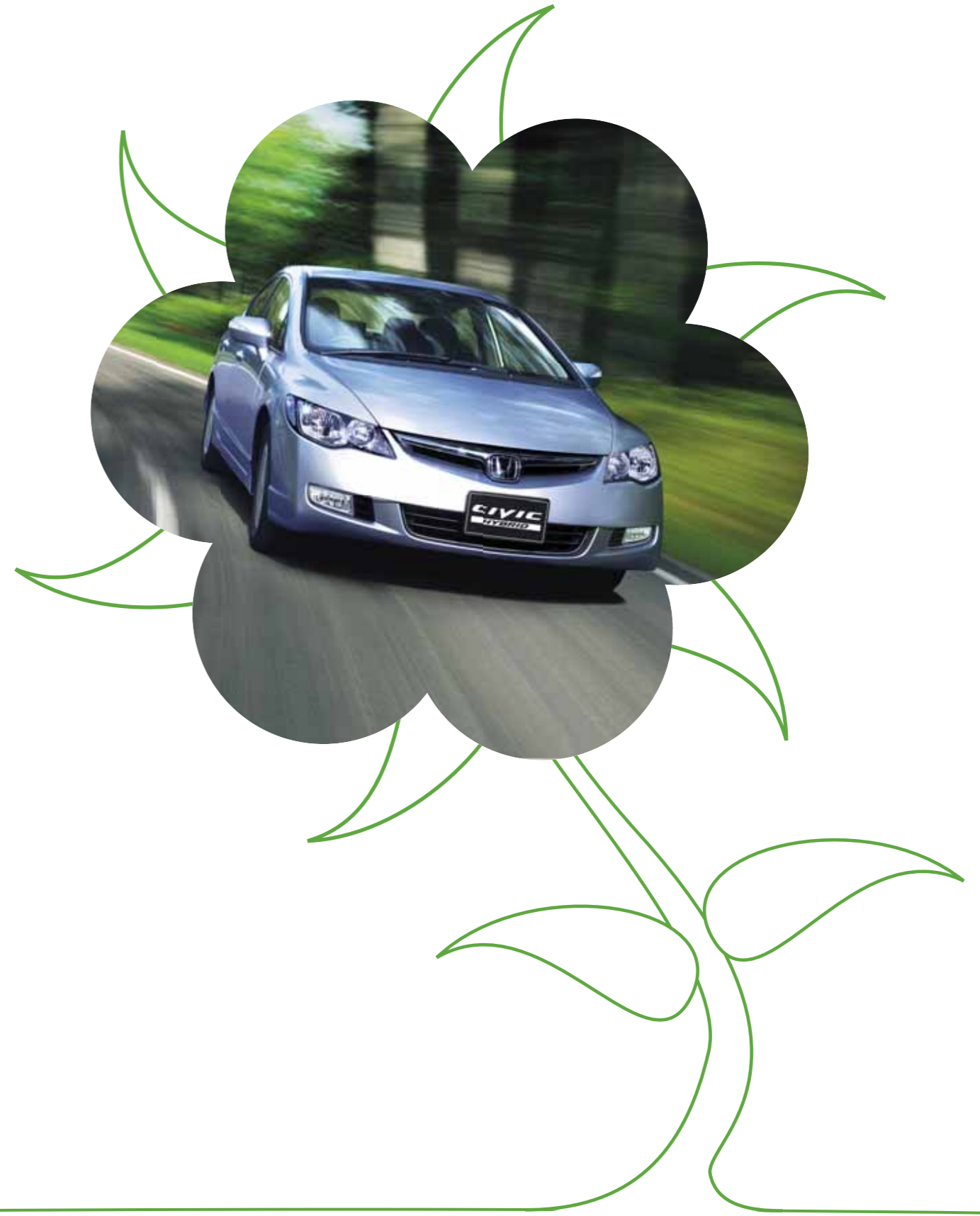
TO CREATE GREENER, CLEANER CARS. THAT IS ONE OF OUR DREAMS AT HONDA. WE HAVE EFFECTIVELY REDUCED EXHAUST EMISSIONS ACROSS ALL OUR VEHICLES BY UTILISING HONDA'S LOW EMISSION VEHICLE (LEV) TECHNOLOGY. ALREADY THE NEW CIVIC 1.8-LITRE AND 2.0-LITRE ENGINES MEET THE EURO 4 EMISSIONS STANDARD. AND THEN THERE'S THE CIVIC HYBRID...



THE NEW GENERATION **CIVIC HYBRID**

THE DISTINCTIVE ONE SWEEP DESIGN. THE SPORTY SNUB NOSE. THE LOW FRONT GRILLE. THE CIVIC HYBRID HAS THE LOT.

AND IT LOVES THE ROAD. THE MACPHERSON STRUT FRONT SUSPENSION MAKES CORNERING EVEN MORE FUN AND THE PRECISE POWER-ASSISTED STEERING MAKES FOR EFFORTLESS PARKING. SO NOW YOU CAN BE EASIER ON THE ENVIRONMENT WITHOUT COMPROMISING ON STYLE OR PERFORMANCE.



THE 'GREEN MACHINE', AS WE LIKE TO CALL IT.

The Civic Hybrid is our Ultra Low Emission Vehicle (ULEV), powered by Honda's Integrated Motor Assist (IMA) system which combines the use of a petrol engine and electric motor to boost performance, cut fuel consumption and slash emissions.

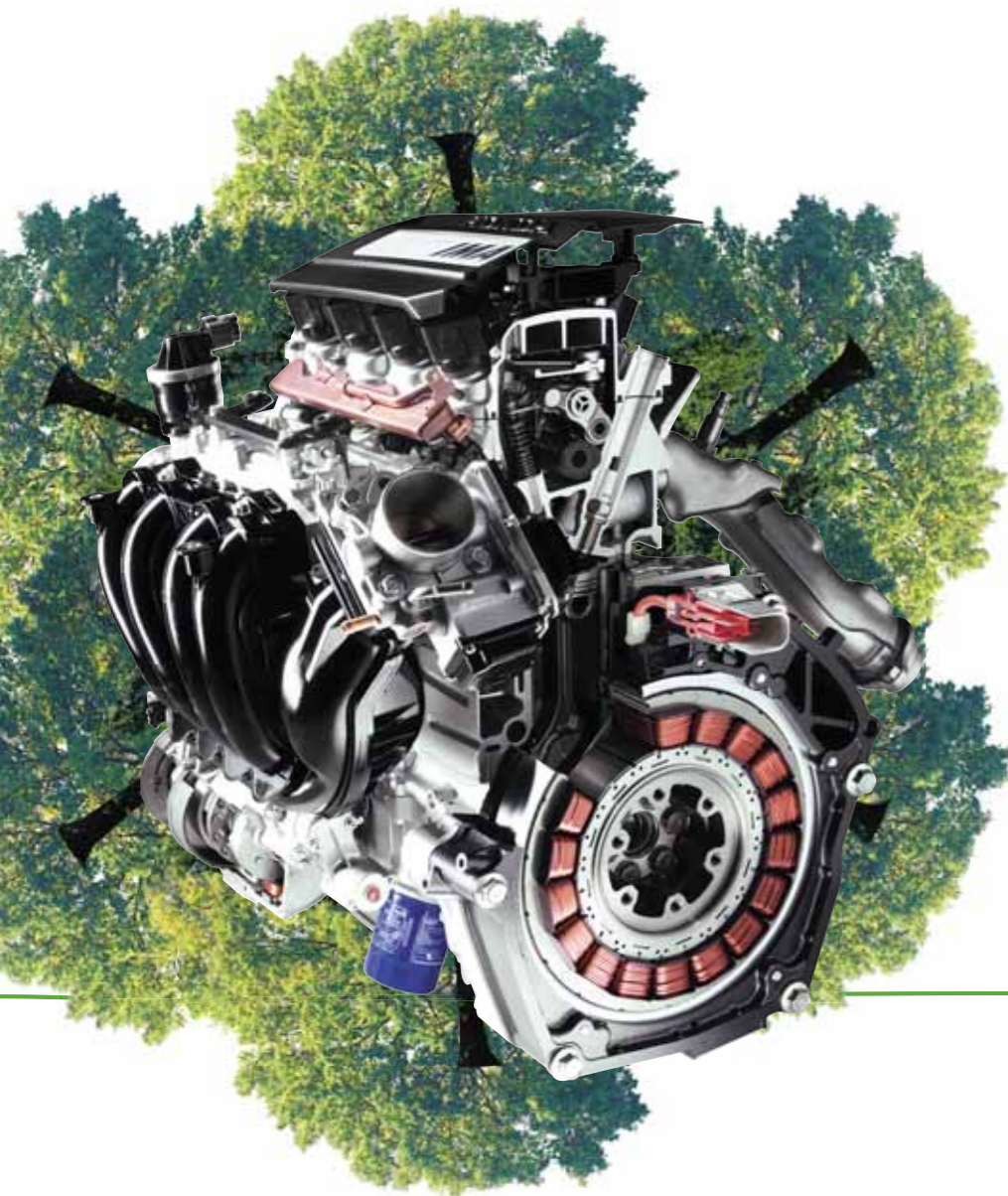
The Hybrid engine draws on an ultra-thin electric motor for supplementary power when needed – such as during acceleration. And that amazing electric motor has the ability to generate and recharge its own batteries while cruising, decelerating and braking. During acceleration, the engine, working in tandem with the electric motor, propels the vehicle. During cruising, the petrol engine and/or the electric motor can propel the vehicle, depending on conditions. During braking, the petrol engine deactivates and the electric motor acts as a generator to replenish the battery pack.

The new generation Civic Hybrid has a lighter, more powerful engine and electric motor producing a combined 85 kW @ 6000 rpm. This makes it the most powerful Hybrid available.

But surprisingly, while the power is up, the fuel consumption is down, with the new generation Hybrid going through a mere 4.6 litres per 100 km.

The Civic Hybrid also comes with a Continuously Variable Transmission (CVT) as standard equipment. This provides an even greater fuel economy benefit, by helping the engine stay in its most efficient operating mode.

And, astoundingly, the new Civic Hybrid can run on electric power alone at speeds under 40 km/h, creating no emissions at all. We also provide an 8-year warranty on the Nickel Metal Hydride (Ni-MH) Battery module in the new Civic Hybrid. Plus, every new Honda comes with our 3-year, 100,000 km warranty, including a 3-year surface corrosion warranty and a 6-year rust perforation warranty.



SMART ON THE INSIDE TOO.

Our fourth generation hybrid has all the space and comfort you'd expect from the new Civic. There's increased people room thanks to its innovative flat rear floor, and ample boot space makes transporting bulky items like skis and bikes a cinch.

On the dash you'll find the Civic Hybrid's unique display for instantaneous fuel economy, while on the lower dash, you'll find the display for battery charge level and the IMA 'charge', 'assist' and 'AUTO STOP' displays. 'AUTO STOP' indicates that the engine is idle and the car is running on the electric motor alone. It means that your car is emitting no pollution, so when you see the 'AUTO STOP' display, remember to smile.



THE NEW GENERATION **CIVIC HYBRID**

LESS EMISSIONS, MORE TREES.

Honda and Greenfleet Australia have joined forces to dramatically reduce carbon emissions. We're so excited about the launch of the latest ultra fuel efficient Civic Hybrid, that we're including an exclusive Honda Climate Care Warranty with each Hybrid vehicle sold. The Honda Climate Care Warranty is an initiative of Honda and Greenfleet Australia. For every Civic Hybrid purchased, Greenfleet Australia will plant six native trees for each of the three years covered by the Civic Hybrid manufacturer's warranty.

In this way, the small amount of emissions produced by driving your Civic Hybrid will be offset by the trees planted on your behalf. In addition to effectively neutralising your carbon emissions you'll be helping to restore the natural habitat for endangered species and protecting the land from salinity and soil erosion. To discover more about Greenfleet Australia's programs visit www.greenfleet.com.au.

For more information on the Honda Climate Care Warranty visit www.honda.com.au.

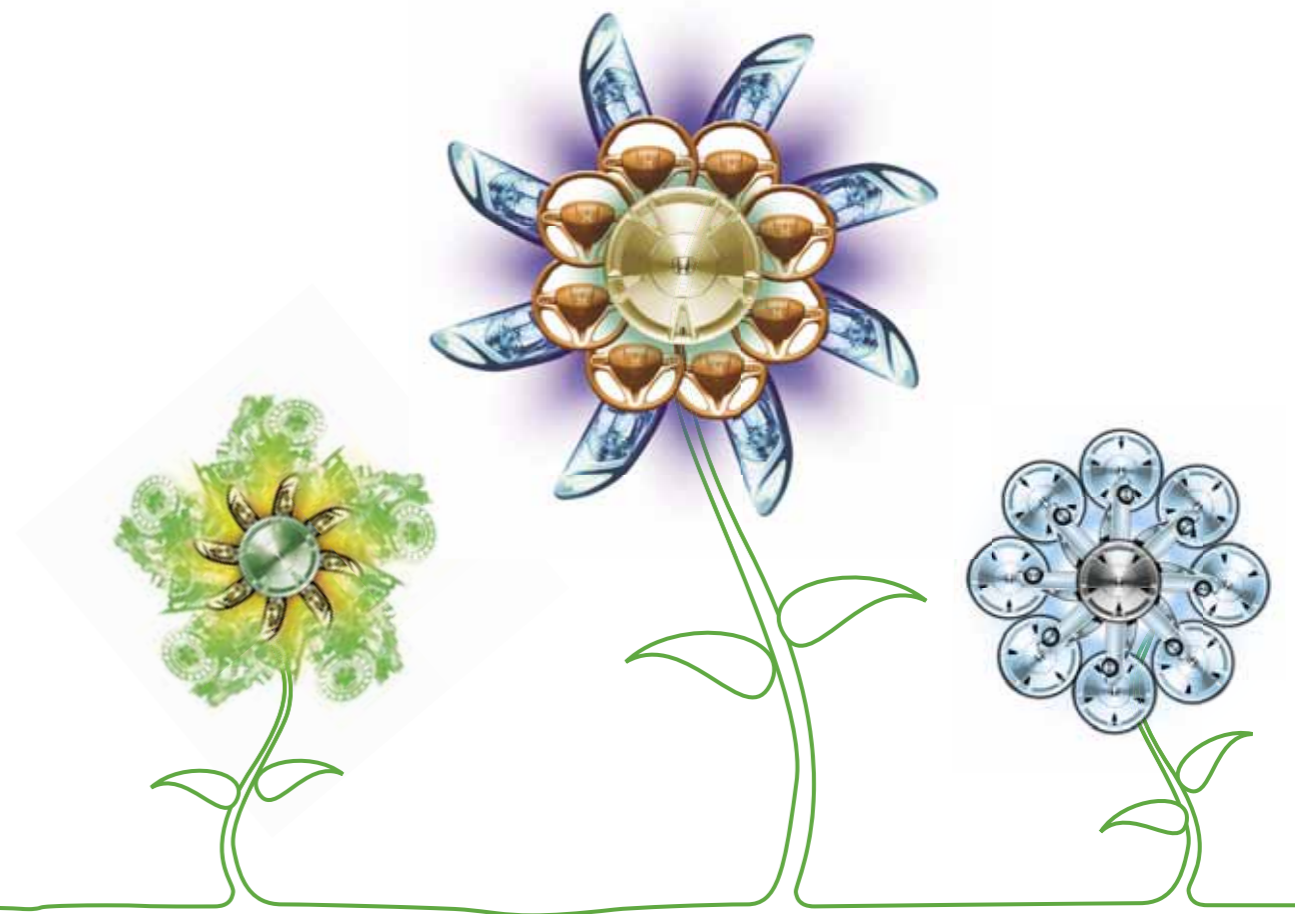


OUR MISSION.

At Honda we're committed to the preservation of the global environment. To achieve these goals, we've set guidelines that we adhere to daily:

1. We recycle materials and conserve energy at every stage of a product's life cycle.
2. We minimise and find appropriate methods to dispose of our waste and contaminants.
3. We focus on the importance of making efforts to preserve human health and the global environment.
4. We recognise the influence our corporate activities have on the local environment and society, and strive to enhance Honda's reputation as an environmentally responsible company.

After all, we know that our dreams for tomorrow will only be realised if we take action to preserve today.



SPECIFICATIONS

POWERTRAIN		HYBRID
Engine		Inline 4 cylinder
Capacity		1.3 litre - 1339 cc
Max power		85 kW @ 6000 rpm
Max torque		170 Nm @ 2500 rpm
IMA System (Integrated Motor Assist)		✓
Control system		Honda Programmed Fuel Injection (PGM-FI)
Emission standard		Ultra Low Emission Vehicle (ULEV)
Manual transmission		-
Automatic transmission		CVT with Grade Logic Control
Drive by wire throttle		✓
Fuel type		91 RON Unleaded
CHASSIS		
Body type		Monocoque
Front suspension		Independent
Rear suspension		Double wishbone
Stabiliser bars		Front & rear
Power steering		Electric
Wheel type		Alloy
Spare wheel type		Temporary
Front brakes		Vented disc
Rear brakes		Drum
EXTERIOR		
Bumpers		Impact absorbing
Fog lights (front)		✓
Front wiper		2-speed & variable intermittent
Headlights		Halogen type
Keyless entry		✓
Power door mirrors		Body coloured with side turn indicator
Rear spoiler		Hybrid type
Rear window demister		✓
Side protectors		Body coloured
INTERIOR		
Air conditioning		Climate control
Ashtray		Front
Body coloured side mouldings with chrome		✓
Central locking		✓
Cruise control		✓
Cup holders		2 x front / 2 x rear
Digital clock (in radio)		✓
Door pockets		All doors
Drivers footrest		✓
Drivers seat height adjuster		✓
Drivers window		Auto up/down
Glovebox		✓
Head restraints - front		Adjustable
Head restraints - rear		Adjustable
Illumination meters - array		✓
Interior illumination		Cargo area
Interior illumination		Courtesy light
Interior illumination		Map light
Lights-on warning		Audible
Low fuel warning		✓
Outside temp gauge		✓
Power windows		✓
Remote boot		✓
Remote fuel filler release		✓
Seats - front		Fully reclining
Seats - rear		With armrest
Seatback pocket		Driver & passenger side
Seatbelt height adjuster		Front

INTERIOR CONT.		HYBRID
Steering column		Tilt & telescopic adjustable
Tachometer		✓
Tripmeter		x 2
Vanity mirrors		✓
Windows		Heat absorbing
SAFETY FEATURES		
Airbag i-SRS - front		Driver & front passenger
Airbag SRS - side		Driver & front passenger
Airbag SRS - curtain		Front & rear
Anti-Lock Brakes (ABS)		✓
Child protection locks		✓
Child safety seat anchorage's		x 3
Convex door mirror		Driver & passenger side
Fire retardant interior		✓
Front windscreen		Laminated
Fuel tank roll over valve		✓
Hazard warning lights		✓
High mounted stop light		✓
Honda G-CON technology		✓
Immobiliser system		✓
Monocoque body construction		✓
Progressive crumple zones		Front & rear
Rear view mirror		Day/night type
Screw type fuel cap		✓
Seatbelt pretensioners		Front seating positions
Seatbelt reminder light		Driver
Seatbelts - 3 point ELR		All seating positions
Security alarm		✓
Side impact protection		✓
Steering column		Energy absorbing type
Transmission shiftlock		✓
DIMENSION		
Length		4550 mm
Width		1750 mm
Height		1430 mm
Ground clearance - laden		110 mm
Weight - tare auto		1265 kg
Turning circle		10.8 m
Fuel economy - Combined (litres / 100 kms)		4.6 auto
Fuel tank capacity		50 litres
Wheel size		15 x 6 JJ
Tyre size		195/65 R15 91H
Maximum towing capacity -		
- trailer with brakes		-
- trailer without brakes		-
Seating capacity		5
AUDIO		
6 CD tuner		✓
Front speakers		x 2
Rear speakers		x 2
Antenna		Roof
Speed sensitive audio volume		✓
MP3/WMA readable		✓
MP3 auxiliary jack		✓
Remote audio controls		✓
COLOURS		
EXTERIOR	INTERIOR	
Taffeta White		Ivory
Alabaster Silver Metallic*		Ivory
Neutron Blue Metallic*		Ivory
Sparkle Gray Pearl*		Ivory
Bright Red Pearl*		Ivory
Shoreline Mist Metallic*		Ivory

✓ Standard equipment ■ Optional - Not available * Metallic / Pearlescent paint additional cost.

HYBRID COLOUR RANGE

