

# Trajet



Front fog lamps are optional extras.

## Exterior

-  1. Glacier Silver (metallic)  
(shown above)
-  2. White Wish (solid)
-  3. Silky Beige (metallic)
-  4. True Blue (metallic)
-  5. Rubens Red (metallic)



2



3



4

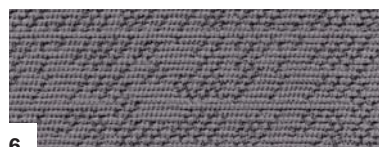


5

Note: Car colours are indicative only and may vary due to the printing process.

## Interior

-  6. Grey cloth trim



6



# HYUNDAI | Trajet V6

| Engine                    | Trajet  |
|---------------------------|---|
| Engine capacity           | 2.7 litre (2656cc)  |
| Configuration             | V6, aluminium block & cylinder heads                                    |
| Valve system              | Quad cam, 24 valve  |
| Maximum power             | 124 kW @ 6000 rpm   |
| Maximum torque            | 245 Nm @ 4000rpm  |
| Fuel system/fuel required | Multi-point Electronic Fuel Injection: tuned for standard 91–92 RON ULP |
| Bore x Stroke             | 86.7 mm x 75.0 mm   |
| Compression ratio         | 10.0:1  |
| Drivetrain                | Transverse front mounted, driving front wheels                          |

| Transmission | Trajet  |
|--------------|---|
| Automatic    | Column mounted shift 4 speed electronic HiVec* (adaptive to driver style) with lock up torque converter & selective overdrive *Hyundai intelligent Vehicle electronic control |
| Gear ratio   | 1st<br>2nd<br>3rd<br>4th<br>Reverse<br>Final  |
|              | 2.842<br>1.495<br>1.000<br>0.731<br>2.720<br>4.018  |

| Suspension                     | Trajet  |
|--------------------------------|---|
| Front                          | Independent: MacPherson struts with offset coil springs. Lower A-arms & anti-roll bar |
| Rear                           | Independent trailing wishbones with coil springs & anti-roll bar                      |
| Shock absorbers (front & rear) | Double acting tubular gas pressurised   |

| Power Steering                                | Trajet  |
|---|---|
| Type  | Power assisted rack & pinion  |
| Column  | Energy absorbing dual collapsible steering column with height/tilt adjustment |
| Minimum turning circle diameter between kerbs | 5.67 m  |
| Number of steering wheel turns lock to lock   | 2.92 turns  |

| Brakes                                     | Trajet  |
|--|---|
| General                                    | Dual-diagonal, split circuit, power assisted braking system with Electronic Brakeforce Distribution |
| Front                                      | Ventilated disc, floating calliper brakes with pad wear warning device                              |
| Rear                                       | Solid disc, floating-calliper brakes with pad wear warning device                                   |
| ABS  | Standard 4 channel, 4 sensor Anti-skid Braking System   |
| Towing capacity: Braked / Unbraked trailer | 1350kg / 450kg  |
| Tongue load                                | 135kg   |
| Roof rail limit                            | 100kg   |

| Wheels & Tyres                    | Trajet      |
|-----------------------------------|-------------|
| Tyres                             | 215 / 65R15 |
| Steel wheels with full size spare | 6J x 15     |

| Dimensions                          | Trajet                |
|-------------------------------------|-----------------------|
| Exterior                            |                       |
| Length                              | 4695 mm               |
| Width                               | 1840 mm               |
| Height                              | 1710 mm               |
| Wheelbase                           | 2830 mm               |
| Wheel tread front & rear            | 1565 mm               |
| Interior                            |                       |
| Head room front / middle / rear     | 1030 / 995 / 950 mm   |
| Interior room front / middle / rear | 2640 / 1535 / 1225 mm |
| Shoulder room front / middle / rear | 1500 / 1500 / 1460 mm |
| Leg room front / middle / rear      | 1045 / 930 / 874 mm   |
| Minimum ground clearance            | 153 mm                |
| Cargo capacity: seats up            | 523 SAE litres        |

| Tare Mass | Trajet  |
|-----------|---------|
| Automatic | 1741 kg |

| Fuel Figures ADR81/01* | Trajet              |
|------------------------|---------------------|
| Automatic cycle        | 10.9 litres / 100km |
| Fuel tank capacity     | 75 litres           |

| Safety Features  |
|--|
| <ul style="list-style-type: none"> <li>• Driver's side airbag</li> <li>• Front passenger airbag</li> <li>• Anti-skid Braking System (ABS) with Electronic Brakeforce Distribution</li> <li>• 4 wheel rear disc brakes</li> <li>• Front seatbelt pretensioners with load limiter system</li> <li>• Front &amp; middle row seatbelt height adjusters</li> <li>• Reinforced floor pans, roof &amp; forward section</li> <li>• Reinforced doors with ultra high tensile steel beams</li> <li>• Impact absorbing bumpers</li> <li>• 4 Height tensile reinforced roof cross members</li> <li>• Front &amp; rear crumple zones</li> <li>• Rear fog lamps</li> <li>• Child seat anchor points</li> <li>• Warning lights (seatbelt, door ajar, park brake, low fuel)</li> </ul> |

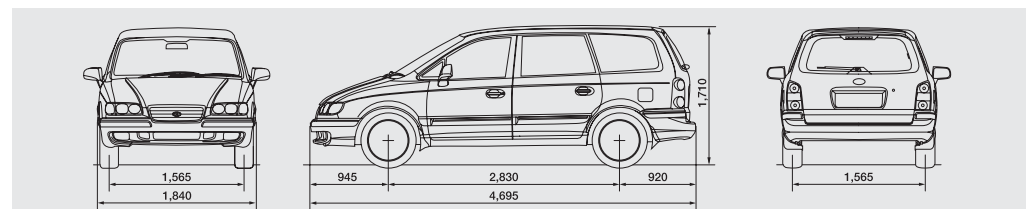
| Exterior Features  |
|--|
| <ul style="list-style-type: none"> <li>• Colour coded front &amp; rear bumpers with protective strips</li> <li>• Protective waistline moulding</li> <li>• Rear wiper/washer</li> <li>• Variable intermittent front &amp; rear wiper</li> <li>• Electric outside mirror</li> <li>• Manual telescopic antenna, adjustable from driver's seat</li> <li>• Body coloured door handles</li> <li>• Front &amp; rear mud guards</li> </ul> |

| Convenience & Comfort  |
|--|
| <ul style="list-style-type: none"> <li>• Dual air conditioning with pollen filter</li> <li>• MP3/CD player, FM/AM tuner with security PIN code</li> <li>• 6 speakers</li> <li>• Map lights for 2nd &amp; 3rd row seats</li> <li>• Central door locking</li> <li>• Power windows (driver side one touch function)</li> <li>• Trip computer with distance to empty, driving time &amp; ambient temperature</li> <li>• Engine immobiliser</li> <li>• Electric remote fuel filler release</li> <li>• Luggage net</li> <li>• Luggage lamp</li> <li>• Rear heated glass</li> <li>• Dual horn</li> <li>• Tachometer</li> <li>• Foot operated parking brake</li> <li>• 3 x 12 volt power outlets: 1 in front multi-box, 2 in rear cargo area</li> <li>• Storage drawer under front passenger seat</li> </ul> |

| Front  |
|--|
| <ul style="list-style-type: none"> <li>• Driver's seat cushion height adjustment</li> <li>• Driver's side lumbar support</li> <li>• Swing down armrests on both driver &amp; passenger seats</li> <li>• Front door map pockets with bottle holders</li> <li>• Overhead console with sunglasses holder, map lights &amp; digital clock</li> <li>• Front seat headrest, up/down</li> <li>• Front seat back pockets with lowering food &amp; drink trays</li> <li>• Driver &amp; passenger side sunvisor with vanity mirrors, ticket holder &amp; cover</li> <li>• Multi-box (centre console)</li> <li>• Twin cup holders for front passengers</li> </ul> |

| Middle  |
|---|
| <ul style="list-style-type: none"> <li>• 2 separate bucket seats with up/down headrests</li> <li>• Sliding, reclining, double folding &amp; removable seats</li> <li>• Seats fold to table with cup holder</li> </ul> |

| Rear   |
|--|
| <ul style="list-style-type: none"> <li>• 60/40 split bench seat for 3 people with up/down headrests</li> <li>• Reclining, double folding &amp; removable seats with centre armrest</li> <li>• Two cup holders</li> <li>• Side storage bins under flip-up armrests for outer passengers</li> <li>• Seats fold to table with cup holder</li> </ul> |



Hyundai Motor Company Australia Pty Ltd 8 Baywater Drive, Homebush Bay NSW 2127 T. 02 9763 3333 F. 02 9763 3433

Hyundai Motor Company (HMC) & the Hyundai Motor Company Australia (HMCA) each reserve the right to alter vehicle specifications & equipment levels without notice. Some equipment featured on the cars in this brochure may not be available in Australia or may be optional. To the extent permitted by the law, neither HMC nor HMCA shall be liable to any person as a result of reliance on the content of this brochure. Please consult your Hyundai dealer for the latest specifications, equipment levels, options, prices, colours & vehicle availability. Metallic & mica paint are optional extras. NOTE: Information in this spec. sheet is current as at 2/02/2006.

[www.hyundai.com.au](http://www.hyundai.com.au)

Part No. TR0804S

\* (Source: ADR81/01. Fuel consumption will vary depending on a combination of driving habits, road conditions and the condition of the vehicle).