

Audi

S8





Today we train our luxury limousines –
so that they continue this tradition.

History was made in October 1937. The Auto Union streamlined Model C was the first vehicle to top 400 km/h in road driving. The secret behind this exceptional performance was the special design: the streamlined car combined high-performance engine technology with a lightweight aluminium structure and an aerodynamic shape. A successful combination that Audi has adopted as a principle: performance is improved not by mere increases in

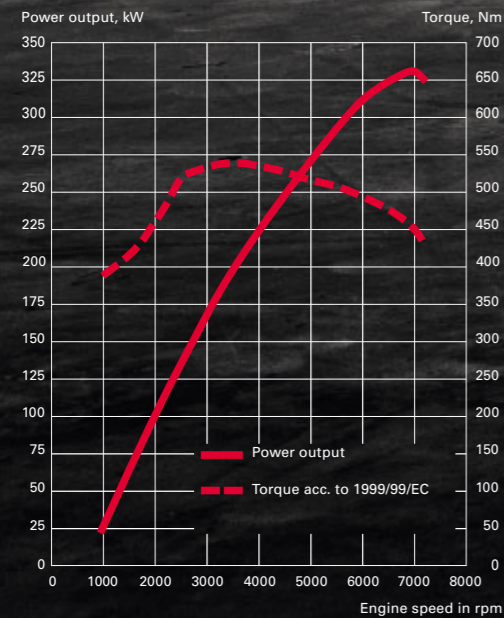
engine capacity but by the optimum co-ordination of all the car components. Audi has applied this principle of intelligent power not only to its sports cars but also to a luxury limousine. Join us on an unusual training drive in the Audi S8.



**To perform excellently, an athlete trains hard
and regularly: up to 7000 times a minute.**

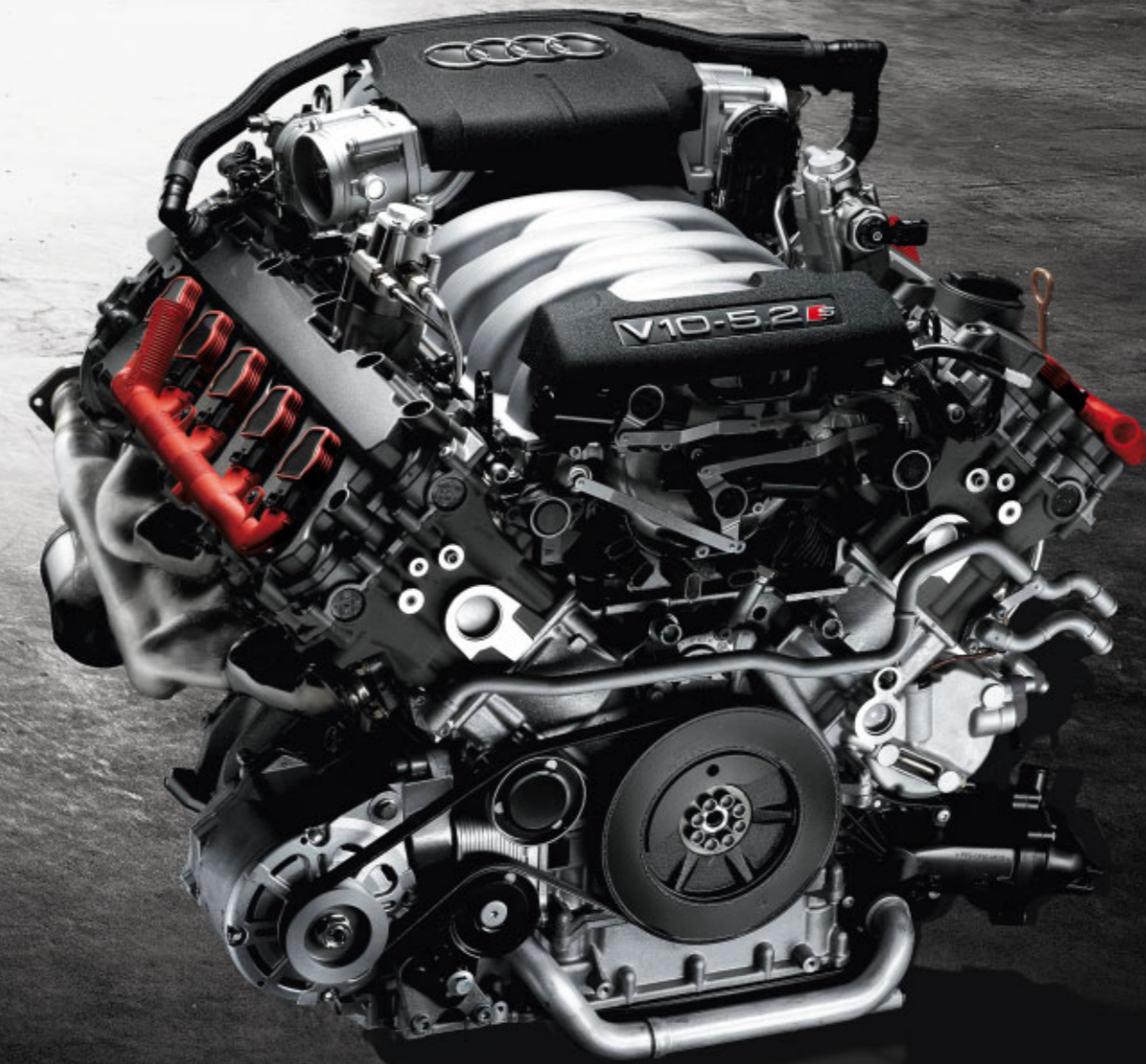
Sprinting is followed by endurance training. Countless repetition is the key to success. Athletes are only capable of performing exceptionally well over long distances too afterwards if they work on their stamina over and over again, with absolute determination and uncompromising commitment. The Audi S8 therefore repeats the same exercises up to 7000 times a minute. At 7000 rpm, it achieves an astonishing 331 kW – extraordinary figures for luxury limousines.

It develops such impressive power over practically the entire speed range. The engine reaches its maximum torque of 540 Nm at 3500 rpm. 90% of this enormous power are already available at 2300 rpm. The result is tremendous acceleration that is not reined in until the controlled top speed of 250 km/h is reached. Breathtaking performance coupled at the same time with the most satisfying of luxuries: awareness of one's own superiority.



The heart of a competitive sportsman beats in the Audi S8: the first 10-cylinder engine with direct petrol injection. Its throaty sound reveals before it has even started what power is at your command. This power and dynamic performance are allied in absolute harmony with the maximum of comfort that can be expected in a luxury limousine. The 5.2-litre engine and the 10 cylinders with four valves each guarantee an extremely smooth ride. The compact design and

lightweight structure of the aluminium-alloy engine save weight and – together with the FSI® technology that has been tried and tested under tough motor racing conditions – fuel as well. The highly efficient FSI® injection process was taken over from the legendary Audi R8, which crossed the finishing line first for the fifth time in six years in the 2005 Le Mans 24 Hours race.



The right attitude to the race is a question of training.

A superior performance is a question of genes.



It is obvious at first glance that the Audi S8 is an outstanding performer. An athletic appearance is only part of it; the aerodynamic design, which it owes to hard training in the ultramodern Audi wind tunnel centre, is even more impressive. Because appearance was never an end in itself when the Audi S8 was being developed: its driving performance benefits from every single detail of the car's design. The wide air inlets next to the fog lights supply the V10 FSI® engine with additional air for cooling purposes. The spoiler integrated in the boot lid improves roadholding. And the eye-catching 20-inch cast aluminium wheels with S styling help the engine's power to be applied to the road even more effectively.

Design elements that boost performance – and make a big impression at the same time: the pairs of oval tailpipes, the strong, high shoulders, the striking Singleframe and the roof line reminiscent of a coupé give the S8 a self-confident, superior look with not a touch of arrogance.

There are ups and downs on the way to the top.

Good to be prepared for them.

Versatility is what distinguishes a true athlete. He does not reveal any weaknesses but demonstrates many different strengths. And he responds to any challenge appropriately and confidently – where the Audi S8 is concerned, this means with a particularly sporty or leisurely answer, depending on the situation. The Audi adaptive air suspension – sport with its specific S set-up is what gives the car this confidence. The sporty running gear and the new steering set-up communicate direct contact with the road surface to you. The innovative, firm air suspension set-up permits agile, dynamic driving – without any need for you to sacrifice comfort. While you are moving, the adaptive air suspension –

sport analyses the current driving situation constantly and adapts the suspension to the specific circumstances. You decide the level of sporty or leisurely driving yourself by choosing the suspension mode: the more leisurely comfort mode or the particularly sporty dynamic mode. The automatic level regulation facility makes sure at the same time that the body is always the same distance away from the road – no matter how the car is loaded. The level is lowered automatically at higher speeds. The result: more stability while driving and lower fuel consumption thanks to less air resistance.





**A good athlete needs two things:
absolute fitness and the right technique.**



moment and subsequently accelerating powerfully out of it again. This is how the Audi S8 saves the seconds that may prove to be crucial at the finishing line. What it needs to do this is a brake system that stops

To finish in the lead, you need to be able to vary your pace during the race. Applied to road training, this means: driving at high speed for as long as possible on the straights, then braking hard into the corner at exactly the right

its awe-inspiring 331 kW at precisely the right time: the 18-inch high-performance brake system which guarantees excellent deceleration even when put to a gruelling test. The Audi ceramic brake is available as an optional extra on the Audi S8. It performs convincingly in overpowering salt lake heat and under demanding braking conditions too by providing outstanding deceleration. The new brake system saves weight as well, which helps to make the car even more dynamic to drive. The brake discs are produced from carbon fibre-reinforced ceramic material and make a strong visual impression too thanks to the surface that is typical of ceramic brakes, the perforated brake discs, the anthracite-coloured caliper brakes and the "Audi ceramic" logo on the front caliper brakes.

Strength is not everything in competitive sports. On the contrary: the ratio of muscles to weight has to be right. With only 4.3 kg/h.p., the Audi S8 therefore finds it particularly easy to perform outstandingly well. It owes this unusually low weight primarily to the Audi Space Frame structure used for its aluminium body. The advantages of this lightweight structure are obvious every time the car is driven.

The key here is the special design of the Audi Space Frame. It makes the car extremely light, but gives it excellent stiffness properties too. Car body vibration is reduced as a result, while comfort and handling are improved considerably at the same time. The very rigid structure does even more than this, however: it makes the body and the passenger compartment of the Audi S8 extremely stable as well.



In the race for first place, every second counts.

And every gram.

Success depends on more than just power
and speed: inner strength.

Superiority and exclusivity cannot be created by training; they are innate characteristics. In the Audi S8, high-quality materials and painstaking craftsmanship make it immediately obvious that you are sitting in a sports car – and in a luxury limousine at the same time. The high, leather-trimmed centre console, the attractive carbon and brushed aluminium strips and the instruments with their coloured background and white hands emphasise both the luxurious and sporty sides of the Audi S8. An impression that you can feel too. When you hold the multifunctional sports leather-covered steering wheel with three-spoke styling, for example. The seams in a contrasting colour are both elegant and sporty. The switching rockers have an aluminium

look. The gear lever knob is made of leather and also has an aluminium look. The sports seats with Valcona leather – with a bicolour look and seams in a contrasting colour, if you want – provide optimum lateral support in dynamic driving and maximum comfort on long journeys.

The impressive range of equipment in the S8 includes, for example, an optional Bose Surround Sound system, a CD changer and a DVD navigation system. And the optional B&O Advanced Sound System with a total of 14 high-end loudspeakers and an output of more than 1000 watts guarantees optimum sound quality.



Switching rockers with an aluminium look



B&O Advanced Sound System (optional alternative)

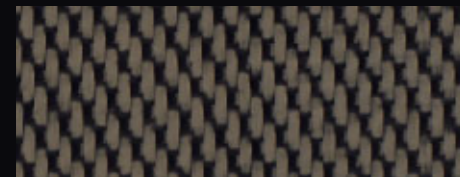


Door entry strip with the S8 logo



MMI® and engine start button with advanced key

Inlays



Carbon Atlas/Aluminium Silver, brushed 5MK



Walnut Brown/Aluminium Titanium Grey, brushed 5MG



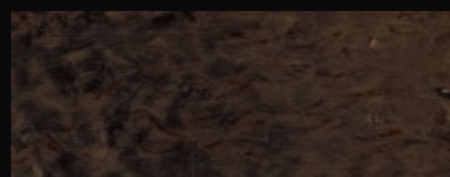
Fine grain birch wood beige/Aluminium Titanium Grey, brushed 7TC

Audi exclusive

Audi exclusive inlays, 7 types of wood and 3 types of wood with intarsia. Supplied by quattro GmbH



Vavona wood Bernstein/Aluminium Titanium Grey, brushed 5ME



Fine grain birch wood grey/Aluminium Titanium Grey, brushed 5TZ

Wheels/tyres



Cast aluminium wheels in S styling, size 9 J x 20 with 265/35 R 20 tyres



Winter wheels in S styling, size 8.5 J x 19 with 255/40 R 19 tyres, permitted top speed 240 km/h; not suitable for fitting with snow chains



Forged aluminium wheels in 9-spoke styling², polished, two-tone finish, size 9 J x 20 with 275/35 R 20 tyres



Forged aluminium wheels in 7-double-spoke styling², high-gloss polished finish, single-colour, size 9 J x 20 with 275/35 R 20 tyres



Cast aluminium wheels in 6-arm styling¹, with PAX run-flat system, 235 x 500 (equivalent to 19 inches) with 245/690 R 500 tyres



Winter wheels in 6-arm styling¹, with PAX run-flat system, 235 x 500 (equivalent to 19 inches) with 235/690 R 500 tyres, permitted top speed 210 km/h; suitable for fitting with snow chains



Forged aluminium wheels in 9-spoke styling², high-gloss polished finish, single-colour, size 9 J x 20 with 275/35 R 20 tyres



Winter wheels in 16-spoke styling, size 8 J x 19 with 235/45 R 19 tyres, permitted top speed 210 km/h; suitable for fitting with snow chains



Forged aluminium wheels in 7-double-spoke styling², polished, two-tone, size 9 J x 20 with 275/35 R 20 tyres

Model S8 5.2 FSI quattro

Engine type	Ten-cylinder V spark-ignition engine with direct petrol injection
Displacement, cc (valves per cylinder)	5204 (4)
Max. output¹, kW at rpm	331/7000
Max. torque in Nm at rpm	540/3500

Driveline/wheels

Type	quattro® permanent all-wheel driveline
Transmission	6-speed tiptronic
Wheels	9 J x 20 cast aluminium wheels
Tyres	265/35 R 20

Weights/capacities

Unladen weight² in kg	1940
Gross weight limit in kg	2540
Roof load/nose weight limits in kg	100/95
Trailer weight limits³ in kg	
unbraked	750
braked, max. gradient 12%	2300
braked, max. gradient 8%	2300
Fuel tank capacity in l	90

Performance/consumption⁴

Top speed⁵ in km/h	250
Acceleration, 0–100 km/h in s	5.1
Fuel grade	SuperPlus, unleaded (98 RON) ⁶
Fuel consumption⁷ in l/100 km	
town	19.7
country	9.7
combined	13.4
CO₂ emissions⁷ in g/km	
town	469
country	231
combined	319
Exhaust standard	EU4

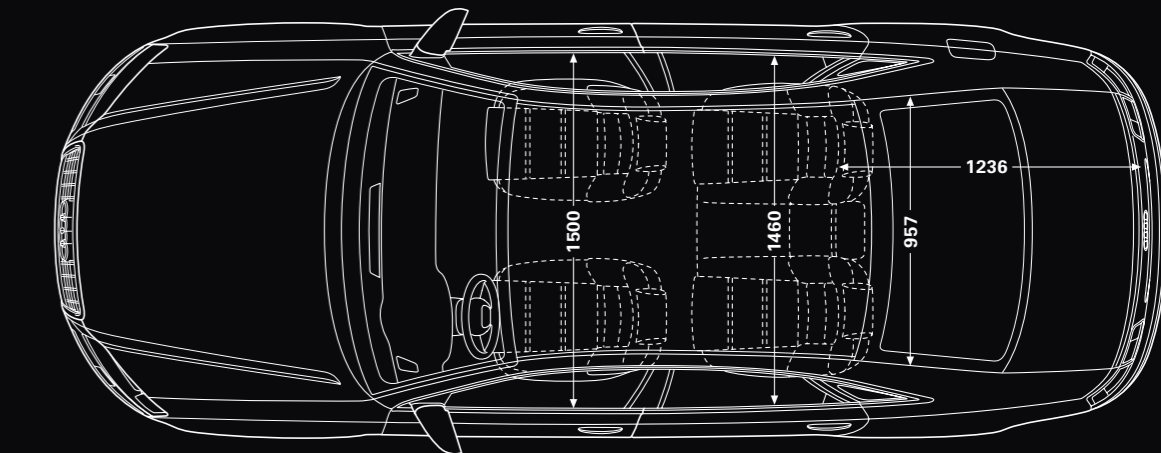
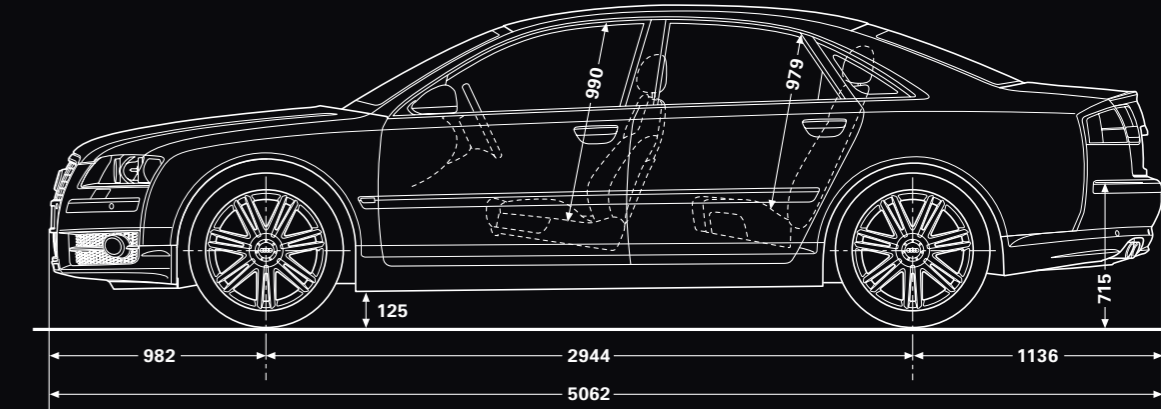
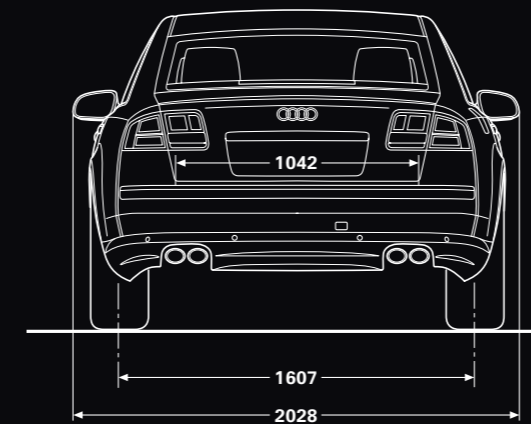
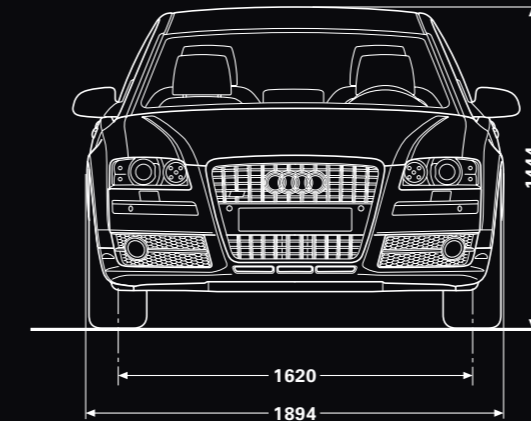
Notes

- ¹ This figure was determined by the specified measuring process (current version of RL 80/1269/EEC).
- ² Unladen weight without driver (determined in accordance with the current version of RL 92/21/EEC). Optional extras may increase the unladen weight and the aerodynamic drag coefficient of the car, in which case the payload limit and top speed will be reduced accordingly.
- ³ The engine's power output always goes down at increasing altitudes. At 1000 metres above sea level and for every additional 1000 m, deduct 10% from the weight of the outfit (trailer weight limit + gross weight limit of the towing vehicle).
- ⁴ The fuel consumption and CO₂ emissions of a car depend not only on efficient use of the fuel by the car but also on driving style and other non-technical factors. CO₂ is the greenhouse gas that is mainly responsible for global warming.
- ⁵ Controlled top speed.
- ⁶ The use of SuperPlus, unleaded fuel (98 RON) is recommended. If unavailable: Super (premium), unleaded fuel (95 RON) can be used with a slight reduction in the car's performance.
- ⁷ The figures indicated were determined by the specified measuring process (current version of RL 80/1268/EEC). The figures do not relate to a single car and are not part of the offer made; their sole purpose is to facilitate comparison between the different car models.

Important note

Inspections are due as indicated by the service display in the car.

Audi S8



Dimensions in millimetres.

Dimensions were measured with vehicle at unladen weight, ground clearance measured with vehicle carrying its maximum load. Luggage compartment volume in l: 500 (measured by the VDA standard test method using 200 x 100 x 50 mm blocks). Turning circle approx. 12.1 m