

**COLT**  
RALLIART

**COLT**  
RALLIART





**COLT**  
**RALLIART**





## TESTED BY THE BEST IN THE BUSINESS

Ralliart is a key division within Mitsubishi which aims to deliver rally car performance to every day road cars. The stripes of the Ralliart brand are earned given the strict criteria which vehicles must meet before allowed to wear the badge. Vehicles must have significantly improved performance in a number of key areas such as engine output, braking, suspension and body dynamics, all combining to give a total driving experience.

Introducing the Colt Ralliart Turbo. Developed by enthusiasts for enthusiasts, this exciting vehicle represents the pinnacle of dynamic performance and precision handling derived from its rally-bred heritage of the Lancer Evolution.

Aesthetically, the Colt Ralliart Turbo looks every bit the part with it's aggressive lines, stylish body kit and purpose built extras like mesh sports grille, high-mounted spoiler and lowered sports suspension, giving it instant street credibility unmatched by any of it's rivals.

Inside, the performance theme continues with sports seats, leather gearshift and alloy sports pedals all derived directly from its mentor - the Lancer Evolution.

Yet it's not until you lift the bonnet that you realise how much grunt this little beast holds. It's responsive power is delivered through a 1.5 litre turbo-charged and intercooled MIVEC engine, driving every one of the five GETRAG manual gears flawlessly, while the brakes, wheels and tyres have all been extensively developed to handle whatever you throw at it.

One drive and you'll be hooked.



1



2



3



4



5

- 1 Ralliart Badging
- 2 Fog Lamps
- 3 Rear Spoiler
- 4 16" Alloy Wheels
- 5 Sports Seats





# RALLY INSPIRATION IN A ROAD CAR

As its name suggests, we've taken the best parts of our world beating, record breaking rally cars and injected them straight into this Colt. From the highly developed front and rear suspension to the advanced power assisted rack and pinion steering, this vehicle is just begging to be driven.



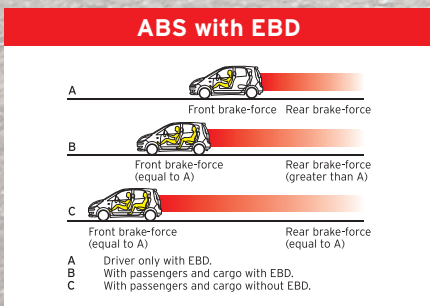
1



2

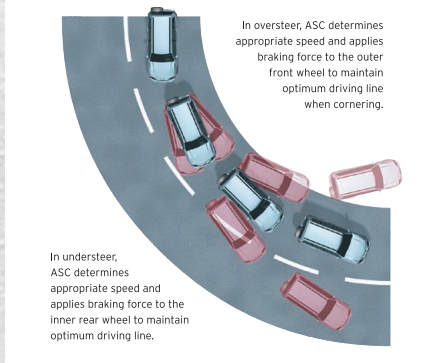
With a car this unique, the braking system has to be ready to handle the higher performance generated by its much more powerful engine and lowered sports tuned suspension. The criteria was simple however: maximum braking ability and a heat capacity that does not fade easily after repetitive braking at high speeds.

Supreme braking performance is delivered via four wheel disc brakes, vented at the front for maximum heat dissipation and fade minimising performance so you can turn in total confidence.



ABS with Electronic Brakeforce Distribution (EBD) and Brake Assist are fitted as standard, this is one vehicle that will stop you in your tracks with the finest precision.

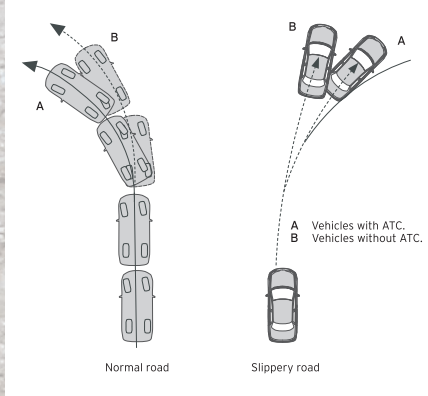
## Active Stability Control



The Active Stability Control (ASC), which incorporates Active Traction Control (ATC), is yet another standard feature on every Colt Ralliart.

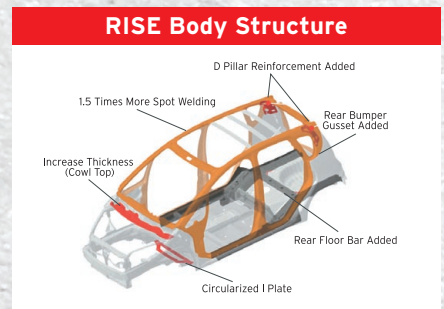
It works by taking vital information from such things as the Steering Angle Sensor and the Wheel Speed Sensor to automatically adjust any unstable movements or shifts.

## Active Traction Control



It then distributes the appropriate power or brakeforce to each individual wheel, thus minimising any wheel spin and ultimately maximising vehicle control.

In true Ralliart style, the Colt Turbo comes complete with 16" 12 spoke alloy wheels fitted with 205/45R low aspect, wide high performance tyres - providing both ride comfort and road hugging ability when you need it.



Additionally, Colt's normal RISE body structure has been further strengthened to suit the Ralliart Turbo edition. As a base, it has 50% more spot welds proving maximum strength. It's also 30% more rigid, enabling it to handle and respond better in any road conditions.

With more reinforcements and cross bracing than you could ever dream of, the rigid body provides the ultimate backbone for razor sharp handling while also being safely cocooned in the body shell should an accident ever occur.

# TECHNOLOGY LIKE THIS BELONGS ON THE TRACK

The true benefit of Colt's intercooled turbo-charged engine becomes clear the instant you accelerate. This remarkably built engine not only detects the slightest shift in speed variation, it also automatically switches the power and torque accordingly, providing more torque at low speed, and increased power higher in the rev count.



4

Additionally, the intercooling system, together with the sports front grille and bonnet vent, ensures that engine bay temperatures are minimised for optimal performance and endurance.

- 1 Front Suspension with Strut Brace
- 2 Rear Suspension
- 3 16" Alloy Wheels with High Performance Brakes & Tyres
- 4 MIVEC Turbo Engine
- 5 Bonnet Vent



3

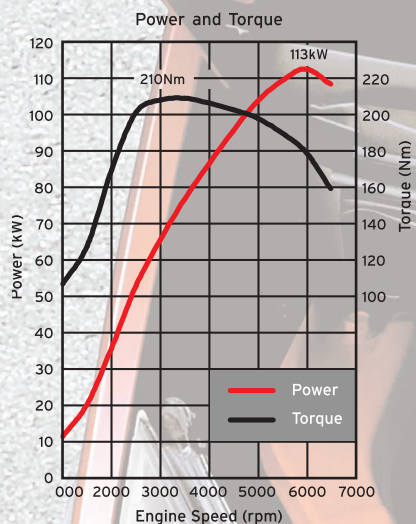


5



## THE RESULT

An extraordinary 113kW of power at 6000rpm, and 210Nm of torque at 3500rpm. The tachometer redlines at 6500rpm and the fuel cut-out occurs at 6700rpm, making this a vehicle packed full of grunt yet perfectly contained in a compact rigid package.



Other engine features include:

- A hollowed out camshaft provides a 1kg weight-saving advantage over standard camshafts.
- The addition of a cylinder block baffle plate increases output and performance as well as reducing oil stirring resistance for the crankshaft and connecting rods.
- The hydraulic timing belt automatic tensioner reduces noise and improves the durability of the belt.
- Reinforced engine and gearbox mountings have been fitted to cope with harder acceleration and sharper handling.

Significant work has also been undertaken on the exhaust system with the addition of large diameter pipes throughout the car helping to reduce the back pressure by 27% while extensive tuning delivers an unmistakably sportier sounding performance from the engine.

The superior five speed German GETRAG manual transmission and SF-Sachs clutch have been specially engineered to handle any power and torque the Colt Ralliart puts out. And with the adoption of synthetic oil replacing the transmission fluid, each gear shift will be smoother and more efficient.

**COLT**  
**RALLIART**



## THE CLOSEST YOU'LL GET TO FEELING LIKE A RALLY DRIVER

Every inch of the Colt Ralliart Turbo has been painstakingly and methodically upgraded to get your adrenalin pumping. And the interior is no exception.

The purpose built sports style front bucket seats provide greater lateral and lumbar support every time when your pedal hits the metal.

The alloy sports pedals, unique sports cluster instrumentation with a 240km/h speedometer and exclusive Ralliart badging on both the scuff plates and above the gear shift will have you feeling like a true racing car driver every time you jump in.

The leather wrapped steering wheel, and gearshift knob provide the perfect grip for when you're racing up and down through the gears and turning into the next corner.

Plus, the high performance 4-speaker audio system with MP3/WMA compatible 6 CD in-dash stacker together with the climate control air-conditioning is the perfect accompaniment for those long and windy roads.

So the only thing left to do now is to strap yourself in and take it for a drive.



- 1 Sports Steering Wheel
- 2 Leather Gearshift
- 3 Instrument Cluster
- 4 Alloy Pedals
- 5 6 CD MP3/WMA Compatible Audio System





# COLT RALLIART SPECIFICATIONS

## ENGINE & PERFORMANCE

1.5 litre DOHC 16 valve Turbocharged	
MIVEC engine (4G15)	
Capacity (cc)	1468 cc
Bore x stroke	75.5 x 82.0mm
Compression ratio	9.0:1
Fuel System	Electronically controlled multi-point injection
Maximum power (kW)	113kW @ 6000rpm
Maximum torque (Nm)	210Nm @ 3500rpm

## TRANSMISSION

5-speed GETRAG Manual Transmission, all synchromesh, floor shift.

## GEAR RATIOS

1st	3.308
2nd	1.913
3rd	1.219
4th	0.846
5th	0.651
Reverse	3.357
Final	3.737

## MECHANICAL

Active Stability Control (ASC)	S
Active Traction Control (ATC)	S

## BRAKES & STEERING

Front	Ventilated disc
Rear	Solid disc
Anti-lock Braking System [ABS] with Electronic Brakeforce Distribution [EBD]	S
9" Variable Brake Booster with Brake Assist function	S
Electric power assisted steering	S

## SUSPENSION

Front strut tower bar	S
Front - Independent McPherson strut with coil springs, gas filled hydraulic double-acting shock absorbers and stabiliser bar.	S
Rear - H-shaped torsion beam with coil springs and hydraulic cylindrical double-acting shock absorbers.	S

Fuel Type	Premium Unleaded
Fuel Tank Capacity	45
Fuel Consumption (ADR 81/01) - l/100km	6.7

These figures are obtained from controlled laboratory tests conducted by Mitsubishi Motors Australia Limited to Australian Standard ADR 81/01 and are provided to assist you in comparing the fuel consumption of Colt with other vehicles. The actual fuel consumption you achieve will depend, however, on many factors, including your driving habits, the prevailing conditions and your vehicle's equipment, condition and use.

## TURNING CIRCLE

(m)	10.8
-----	------

## KERB MASS

(Kg)	1130
------	------

## EXTERIOR FEATURES

Bonnet hood with air outlet	S
Front bumper with upper and lower sports mesh grilles	S
Body coloured rear bumper with integrated air diffuser	S
Black side air dams and wheel arch flares	S
Rear spoiler	S
Halogen complex surface reflector headlamps	S
Bright headlamp extension	S
Parabola type front fog lamps	S
Body coloured electric door mirrors with fold control	S
Chrome exhaust tip	S

## WHEELS & TYRES

16" x 6.5" alloy wheels. 205/45R16 tyres	S
Space saver spare steel wheel	S

## AUDIO

Electronic tune AM/FM Radio and MP3/WMA compatible 6-disc CD player with security code and lamp	S
Number of speakers	4
Front centre roof antenna	S

## COCKPIT

Ralliart sports front seats	S
Driver height, slide and recline adjust passenger slide and recline adjust (front)	S
Height adjustable head rests (front)	S
Rear bench seat	S
- 50/50 split fold seat back with tumble, reclining and slide function	
- height adjustable head rests	
Seating capacity - 4 adults	S
Alloy sports pedals	S
Driver foot rest	S
White sports instrument cluster	S
- Tachometer	
- 240km/h Speedometer	
- Twin trip meter	
- ASC off indicator	
Leather-wrapped steering wheel	S
Leather gearshift knob	S
Urethane handbrake lever with chrome plated release button	S

## SAFETY & SECURITY

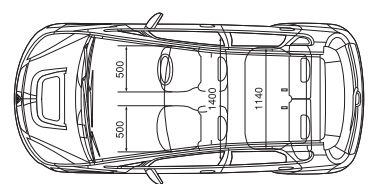
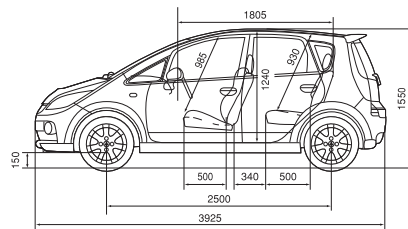
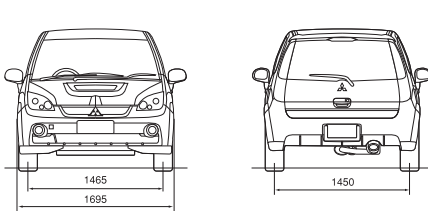
Driver and front passenger SRS airbag	S
Anti-lock Braking System [ABS] with Electronic Brakeforce Distribution [EBD]	S
9" Variable Brake Booster with Brake Assist function	S
Driver and front passenger 3 point ELR seat belts with force limiters and pre-tensioners	S
Adjustable front shoulder anchor seat belts	S
Rear seat belts - 3 point ELR/ALR X 2	S
Seatbelt warning lamp (driver only)	S
Child proof rear door locks	S
Child restraint anchor points X 2	S
Tinted laminated windshield	S
Intrusion minimising brake pedal	S
Remote central door locking including tailgate	S
Anti-theft encrypted immobilisation	S
Cabin illumination for safe entry	S

## COMFORT & CONVENIENCE

Automatic climate control air-conditioning	S
Air filter	S
Power windows - front & rear	S
Privacy glass	S
Assist grips	S
Deodorising headlining	S
Speed sensing variable intermittent front wipers	S
Intermittent rear wiper and washer	S
Rear window demister	S
Digital clock	S
Tilt adjustable steering column	S
Room lamp	S
Map lamps	S
Interior light activation on key removal	S
Headlight warning buzzer	S
Ignition key cylinder illumination with delay timer	S
Driver and front passenger sunvisor with vanity mirror, lid and ticket holder	S
Day/night rear view mirror	S
Accessory socket	S
Remote fuel filler door release	S
Tailgate inside grip	S
Cargo room belt line hooks x 2	S
Jack and tool set	S
Premium Diamond Roadside Assistance	S

## STORAGE

Front seats	S
- door pockets	
- cup holders x 2	
- bottle holders x 2	
- glove box	
- steering column under tray	



Black (P)



Red (M)



Cool Silver (M)



White



White Pearl (P)

Metallic (M) and Pearlescent (P) paints are optional extras.



## DIAMOND finance ADVANTAGE

Take the burden out of financing your new Mitsubishi vehicle with our competitive range of finance products, developed by Mitsubishi Motors Australia Limited and St. George Motor Finance Limited.

## DIAMOND insurance ADVANTAGE

With the sound backing of Swann Insurance and Mitsubishi Motors Australia Limited, Mitsubishi owners can choose between vehicle and personal protection solutions including motor vehicle, gap cover and loan protection insurance as well as a range of tailored warranty policies.

## DIAMOND 5 YR ROADSIDE ASSIST ADVANTAGE

Peace of mind is guaranteed anywhere in Australia with our free 5 year/130,000km (whichever comes first) Roadside Assist, 24 hours a day, 365 days a year. Our fast, comprehensive roadside service offers assistance, repairs, towing and storage. Our Premium Roadside Assist clients also enjoy the added benefits of accommodation, medical and transport facilities. Service conditions apply.

## Ralliart Assistance Centre 1300 794 795

Mitsubishi Motors Australia Ltd. offers a 5 year/130,000km\* New Vehicle Warranty, a 10 year/160,000km\* Powertrain Warranty† and a 5 year Perforation Corrosion Warranty on Mitsubishi Vehicle. Always consult your authorised Mitsubishi Dealer for the latest details on specifications, options, prices, availability and conditions on New Vehicle Warranty. All product illustrations and specifications referred to herein are correct at the time of publication approval. Subject to any applicable Federal, State or Territory Laws or ordinances, which may apply from time to time, Mitsubishi Motors Australia Ltd. reserves the right, without notice, or obligation, to discontinue or make changes to designs, specifications, colours and materials of the options and products referred to herein at any time without incurring any liability to any purchaser thereof. ©Mitsubishi Motors Australia Limited.

ABN 53 007 870 395. COLTRA0608

\*Whichever occurs first. †Non-transferable

