

ODYSSEY



HONDA
The Power of Dreams

Honda Australia Pty. Ltd. ACN 004 759 611 ABN 66 004 759 611
95 Sharps Road, Tullamarine, Victoria, 3043. Freecall 1800 804 954. honda.com.au/cars

The specifications and major features listed herein are accurate as at the date of printing (June 2012/12YM). However, Honda Australia Pty. Ltd. reserve the right to change or modify specifications and major features at any time without prior notice. Due to ordering, shipping and freight factors, some colour and model availabilities may vary from time to time. Check with your Honda Dealer for current information on availability. Only Genuine Honda Accessories are made to fit Honda vehicles. The fuel consumption figures quoted in this brochure are based on ADR81/02 test results. You may experience different results depending on driving conditions and the condition of the vehicle. Honda warranties apply where due care is exercised by the owner and the vehicle is maintained in accordance with the vehicle's owners manual. Please refer to Honda's warranty documentation for exclusions and conditions. Honda Australia Pty. Ltd. recommends careful examination of all official Honda warranty documentation before purchasing. This brochure is printed on Revive Pure Silk 100% Recycled which is Certified Carbon Neutral and FSC 100% Recycled. The pulp used is Process Chlorine Free and is manufactured by an ISO 14001 certified mill. Odyssey shown in Polished Metal on cover. HON8820



Introducing the un-typical family car



Fun to drive

With its responsive i-VTEC engine and sedan-like handling, the Odyssey is loads of fun to drive. Even when it's packed with two adults, five kids, and all their sports equipment, the Odyssey still doesn't feel like a bus.



Safety

When it comes to safety, the Odyssey's got you surrounded. There's an array of both active and passive safety features to protect the most precious cargo of all: your family.



Clever styling

Family friendly shouldn't have to mean boxy and bland. The Odyssey cuts a fine figure out on the road, with a refined shape that's seriously sexy.



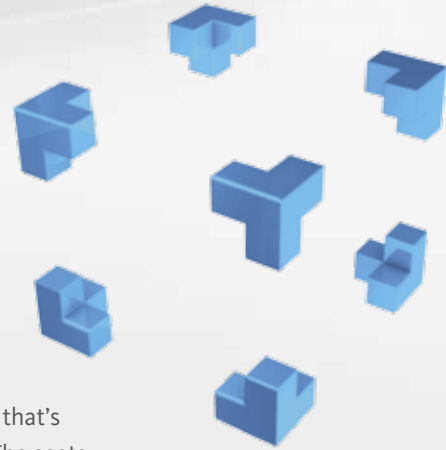
Fuel efficiency

The Odyssey is enviably efficient, with a 2.4 litre i-VTEC engine which uses just 8.9 litres per 100km.* There's also an ECON mode, which harmonises the engine, transmission and climate control to deliver maximum efficiency.



Space

The Odyssey seats seven with an interior that's exceptionally comfortable and sociable. The seats are arranged in a unique V-shape, so everyone can see each other, and nobody is forgotten.



*The fuel consumption figures quoted are based on ADR81/02 test results. You may experience different results depending on driving conditions and the condition of the vehicle. Odyssey shown in Aurora Rosewood.



Odyssey Luxury shown in Aurora Rosewood.



Odyssey Luxury shown in Polished Metal.

Raise a family, and a few eyebrows

In a world of pick-ups and drop-offs, there's one thing that should never be left behind: your sense of style. In your typical family car, more seats usually means less sophistication, but that's where the Honda Odyssey stands out as the un-typical family car.

The first thing you'll notice, naturally enough, is the Odyssey's long, flowing lines and total lack of standard seven-seater-ness.

Forget boring and boxy, the Odyssey is sleek and sexy, with a low-slung design that is sure to turn heads wherever you go.

Of course, great looks aren't enough, so the Odyssey's impressive exterior is complemented by its equally impressive performance. The 2.4 litre i-VTEC engine delivers the perfect balance of power and economy, while its agile, responsive handling definitely won't make you feel like a bus driver.

With such an enjoyable drive, and style credentials that speak for themselves, it's little wonder that Odyssey has been awarded the Drive Car of the Year 'Best People Mover'... Not once, not twice, but six times!

The Odyssey may be at home in the suburbs, but as you'll discover, it's far from suburban.





Odyssey shown in Alabaster Silver.

All aboard for serious style

At first glance, the Odyssey seems more like a prestige car than a family car. Its long, flowing lines and sleeker, more refined shape place it well ahead of the family car pack.

Proving it is actually possible to make room for seven passengers and your sense of style, Honda's engineers have

given the Odyssey a sexy, low-slung profile, and sophisticated touches like LED brake lights and alloy wheels.

And for the ultimate in 'school gate appeal' the Odyssey Luxury also comes with aero bumpers and side skirts.

Whichever model you choose, the Odyssey is the seven-seater that all seven of you can be proud of.

Plenty of space for modern families

As every parent knows, a close family is a happy family. Except when it comes to road trips. Out on the road, everyone needs their space, which is exactly what you'll find in the Odyssey.

The unique 'V-shaped' seating means everyone can see each other, and everyone has a view through the front windscreen. Even the passengers in the third row won't be forgotten,

which is great for conversation, but not so great for those with mischief on their minds.

Even with a driver and six passengers on board, there'll be no squabbles over space, as the Odyssey has ample leg, head and elbow-room for everyone.

And because plenty of passengers usually means plenty of stuff, the Odyssey has loads of space for all your cargo. The second and third row seats easily fold down, while the third row can fold completely flat, which gives a massive 708 litres of rear boot space.

With its amazingly spacious interior, the Odyssey gives every passenger the room to be themselves. And when everybody can be themselves, everybody's happy.



1.

Pick up the kids without leaving comfort behind

While we're exploring how the Odyssey is designed to keep the whole family happy, let's not forget the most important person of all: the driver. The impeccably designed cockpit offers a wide field of vision, stylish brushed silver finishes and an ingenious fold-down centre console that helps create more space.

With the daily runs to school, activities and shopping, there's a good chance you'll be spending a fair bit of time behind the wheel of the Odyssey. But with so many thoughtful touches right at your fingertips, you'll be able to enjoy the ride just as much as your passengers.

2.

Multifunction touch-screen

This clever unit displays all Bluetooth® audio and phone functions*, as well as offering the view from the reversing camera. In addition, the integrated satellite navigation function gives SUNA Live Traffic Updates,† keeping you one step ahead of any traffic dramas.

3.

USB connectivity

Connecting your iPod® or other compatible MP3 device is simple in the Odyssey. There's dash or steering wheel-mounted controls, so you can browse and select your tunes with ease. The only hard part is deciding who gets to play DJ.

4.

Automatic climate control

It's never too stuffy inside the cabin, thanks to the rear ventilation system. There's also dual-zone air conditioning in the Odyssey, and tri-zone control in the Odyssey Luxury.

5.

LCD Multi-information display

Displays all your important driving information at eye level, including instant and average fuel economy, seat belt warning and refueling distance.

6.

Steering wheel-mounted paddle shifters

If you're a more hands-on driver, you'll appreciate these ergonomic paddles that give you more control over the driving experience, allowing you to manually shift gears.

7.

Steering wheel-mounted controls

Thanks to their intuitive design, these controls offer effortless access to the audio system, cruise control and Bluetooth® telephone controls.*

8.

Reversing camera

The camera displays a view from the rear of the vehicle, which makes reverse parking a breeze, and backing out of the driveway even safer.

9.

Retractable 3rd row seating

When not in use, the third row of seats can be stowed away, folding completely flat to the floor. In the Luxury model, the third row can even be raised and lowered electrically.

10.

Electric sunroof

If your family feels like a breath of fresh air, the Odyssey Luxury is equipped with a one-touch electric tilt/slide sunroof.

1.



2.



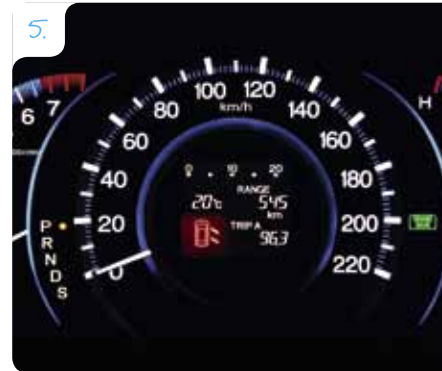
3.



4.



5.



6.



7.



8.



9.



10.



Odyssey Luxury shown.

*The Bluetooth word mark is owned by the Bluetooth SIG, Inc. and use of such mark by Honda is under licence. Please check the list of compatible phones at honda.com.au/bluetooth †SUNA is a registered trademark of Intelmatics Pty. Ltd. Coverage includes Melbourne, Sydney, Brisbane, Gold Coast, Adelaide, Perth and Canberra metropolitan areas. Refer to www.sunatrac.com.au for full details. *iPod is a trademark of Apple Inc. iPod is integrated through audio display for iPod Nano and iPods from 5th Generation onwards. Older iPod models will only operate through the audio system and firmware updates may be required for audio display compatibility. Please refer to your iPod User Guide for information on iPod firmware updates.

A seven-seater disguised as a sedan

The Odyssey may be a seven-seater, but that doesn't mean it should drive like one... Does it? The engineers at Honda certainly don't think so, which is why the Odyssey offers impressive levels of power and torque, combined with the agile handling you might expect from a sedan. So how did they do it? Let's take a quick look under the hood and find out.

For starters, there's the versatile 2.4 litre DOHC i-VTEC engine, which delivers just the right amount of power when you need it, and enviable economy when you're cruising along.

Speaking of cruising, the Odyssey offers a superbly smooth ride, thanks to its independent coil spring suspensions and 5-speed transmission with Grade Logic Control and Shift Hold. This clever system senses when the Odyssey is on an incline or decline, and adjusts the gears to smooth out any jerky 'gear hunting'. There's also steering wheel-mounted paddle shifters, so you can move the gears up or down a notch whenever you choose.

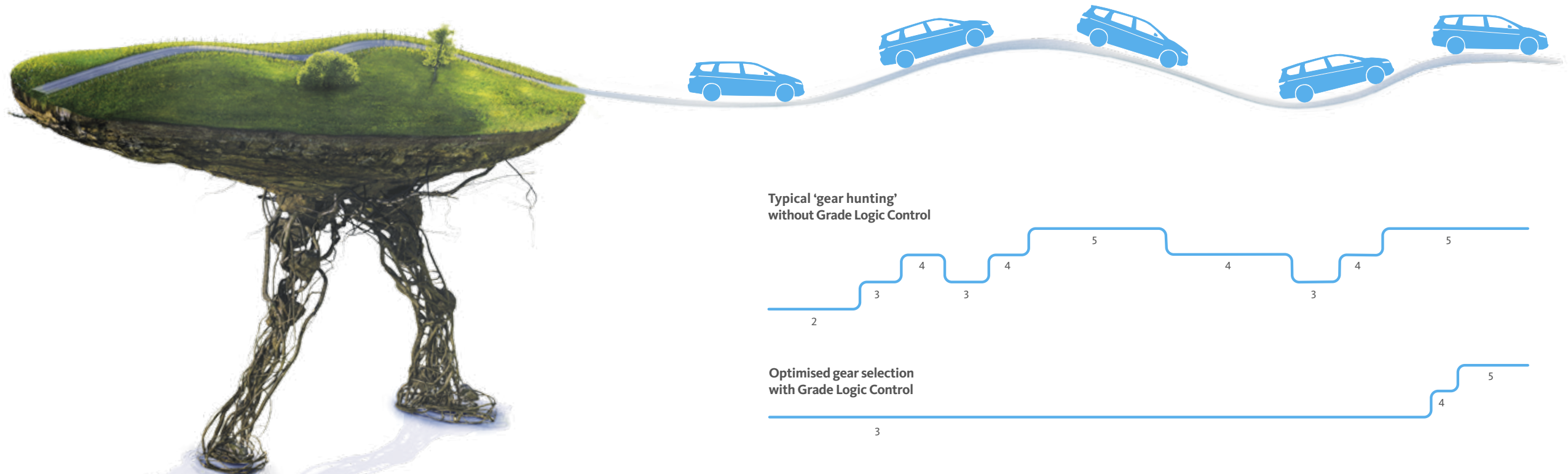
Inside the cabin, the Odyssey feels more like a sedan than a seven-seater. Its low floor and low centre of gravity make the ride more enjoyable, while also making it easier to hop in and out.



Independent coil spring suspension.

The Odyssey even handles superbly in the most unforgiving environment of all – the shopping centre carpark. Its turning circle is an incredible 10.8 metres, which is almost the same as the Civic. Manoeuvring in and out of parking spots has never been more effortless. (If only finding them was so simple.)

The Odyssey may be a seven-seater, but its brilliant performance and agile handling make it an absolute pleasure to drive. Who says a family car has to be boring?



Typical 'gear hunting' without Grade Logic Control

Optimised gear selection with Grade Logic Control

Shift patterns are examples only.



Odyssey shown in Polished Metal.

Making more from less

Just like any good parent, the Odyssey is highly adept at multi-tasking. So when it comes to efficiency, the Odyssey helps you conserve fuel in two different ways.

ECON mode

You can activate ECON mode with the simple push of a button. It helps maximise fuel efficiency by adjusting the Odyssey's engine, transmission, heating and cooling systems. An indicator will appear on the instrument panel to let you know when ECON mode is working.



Eco Assist

This clever coaching system changes the colour of your speedometer to help you drive more efficiently and minimise exhaust emissions. When you brake or accelerate sharply, the display glows blue. Drive smoothly and economically, and the display will turn an encouraging green.



Protect what's precious

Honda's engineers have families too, so when it comes to designing the Odyssey, they have a vested interest in creating the kind of safety features they'd want for their own children.

Anti-lock Braking System (ABS) with Electronic Brake-force Distribution (EBD)

Every Odyssey comes with an Anti-lock Braking System (ABS) to help you stop quickly and safely when it counts. If emergency braking is detected, Brake Assist applies maximum braking pressure and Electronic Brake-force Distribution (EBD) monitors and adjusts the brake force applied to each wheel to achieve optimal control and stability.

Vehicle Stability System (VSA)

Vehicle Stability Assist (VSA) senses oversteer or understeer in an emergency situation, then adjusts each wheel's brake pressure and reduces engine power to help put you back in control.

Motion Adaptive Electric Power Steering (MAEPS)

When VSA is activated, the Odyssey's Motion Adaptive Electric Power Steering automatically adjusts steering pressure to make it easier to steer in the stabilising direction.

Traction Control System (TCS)

Maintains traction on slippery surfaces by monitoring each wheel and, if a front wheel loses grip, it simply applies the required brake pressure to control the spinning wheel and delivery of engine torque.

ACE body structure

At the Tochigi R&D centre, Honda's engineers crash real cars in alarmingly authentic real-world simulations. These learnings have helped to develop Advanced Compatibility Engineering (ACE), an exclusive body structure that disperses crash energy more evenly throughout the front of the vehicle, transmitting less force to the passenger compartment.

GI-CON technology

Developed at Honda's omni-directional crash test facility, this unique technology offers maximum protection from vehicles of varying bumper heights impacting from a range of angles.

Airbags for everyone

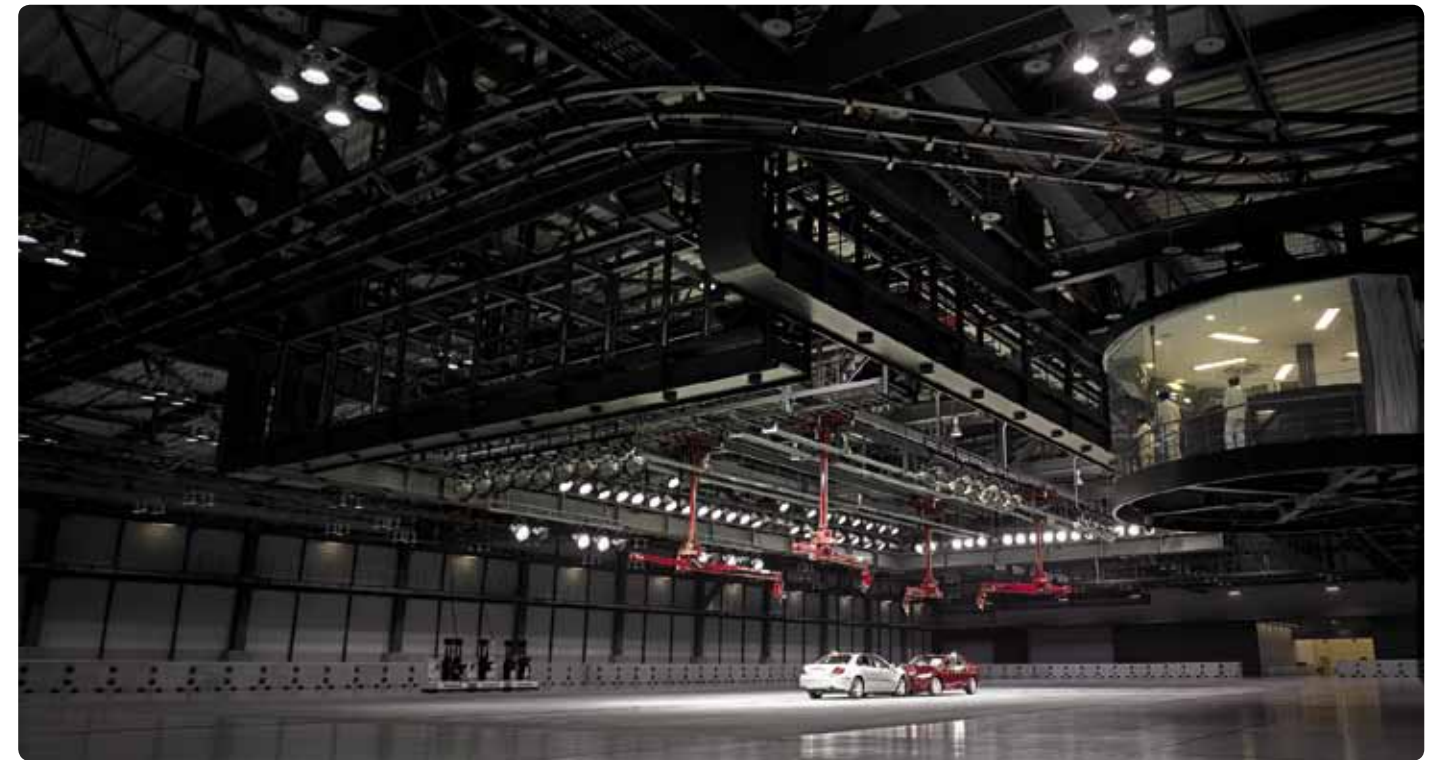
The Odyssey's dual-stage, dual-threshold front airbags provide important protection for the driver and front passenger by optimising the airbag deployment to match the speed and severity of a crash. They also help to minimise injuries that can sometimes be caused by the airbags themselves. Plus, front side airbags and full-length side curtain airbags provide an impressive line of lateral defence for all passengers.

Active headrests

Anti-whiplash driver and front passenger headrests shift upward and forward after a rear-end collision, providing improved head and neck support.

Five child seat anchors

When you've got kids on board, it's good to be flexible. So the Odyssey gives you child seat anchorages in all five of the centre row and rear seats.



Odyssey

The Odyssey comes standard with:

POWERTRAIN

- 2.4 litre DOHC i-VTEC engine
- 132kW @ 6500 rpm
- 218Nm @ 4500 rpm
- 5-speed automatic transmission with Grade Logic Control and Shift Hold
- Drive-by-wire throttle system
- Electric Power Steering (EPS)

EXTERIOR

- 16-inch alloy wheels
- Halogen headlights (auto on/off)
- Chrome door handles
- Body coloured power door mirrors with turn indicators
- Front variable intermittent windscreen wipers
- Remote keyless entry
- LED brake lights

INTERIOR

- Automatic climate control with rear ventilation
- Cloth seat trim
- Cruise control
- Multi-Information Display (MID)
- Tilt and telescopic steering wheel
- 60:40 split fold down second row seats
- Retractable third row seats
- USB connectivity with iPod integration*
- Steering wheel mounted controls
- Bluetooth® phone and audio streaming°
- Satellite navigation with SUNA Live Traffic Updates‡
- Reversing camera
- Eco Assist and ECON mode
- Leather-wrapped steering wheel

SAFETY

- Anti-lock Braking System (ABS) with Electronic Brake-force Distribution (EBD)
- Motion Adaptive Electric Power Steering (MAEPS)
- Vehicle Stability System (VSA)
- Traction Control System (TCS)
- ACE body structure
- G-Con technology
- SRS airbags: dual front, front side and full-length side curtain
- Active headrests
- 5 child seat safety anchorages



Stone fabric seat trim.

Odyssey Luxury

Additional features over the Odyssey:

- 17-inch alloy wheels
- Aero front and rear bumpers and side skirts
- Electric sunroof
- Foglights
- High Intensity Discharge (HID) headlights with washers
- Tri-zone automatic climate control with rear control
- Power retractable third row seats
- Leather appointed seat trim
- Heated front seats
- Smoked tail-light lens
- Aluminum door sill garnish
- 8-way power adjustable driver seat



Leather seat trim.



Find your true colour



Odyssey Specifications

Description	Odyssey	Odyssey Luxury
POWERTRAIN		
Engine type	Inline 4 cylinder, 16-valve DOHC i-VTEC	Inline 4 cylinder, 16-valve DOHC i-VTEC
Capacity	2.4 litre - 2354 cc	2.4 litre - 2354 cc
Maximum power	132kW @ 6500 rpm	132kW @ 6500 rpm
Maximum torque	218Nm @ 4500 rpm	218Nm @ 4500 rpm
Compression ratio	10.5:1	10.5:1
Bore x stroke (mm)	87.0 x 99.0	87.0 x 99.0
Emission - Australian Standards	ADR 79/02 (Euro 4)	ADR 79/02 (Euro 4)
CO2 emissions - combined (g/km)*	212	212
Automatic transmission	5-speed with Grade Logic Control and Shift Hold	5-speed with Grade Logic Control and Shift Hold
- with steering-wheel mounted paddle shift	✓	✓
Eco Assist system	✓	✓
Fuel type	Unleaded (91RON)	Unleaded (91RON)
Fuel supply system	Honda Programmed Fuel Injection (PGM-FI)	Fuel Injection (PGM-FI)
Fuel consumption - combined (litres/100km)*	8.9	8.9
- urban (litres/100km)*	12.1	12.1
- extra urban (litres/100km)*	7.1	7.1
Drive By Wire throttle (DBW)	✓	✓
CHASSIS		
Front and rear suspension type	Independent double wishbone coil spring	Independent double wishbone coil spring
Stabiliser bars	Front and rear	Front and rear
Power steering	Electric	Electric
Front brakes	Ventilated disc	Ventilated disc
Rear brakes	Solid disc	Solid disc
EXTERIOR		
Aero front and rear bumpers	-	✓
Aero side skirts	-	✓
Body coloured bumpers	✓	✓
Body coloured power door mirrors with turn indicators	✓	✓
Door handles	Chrome	Chrome
Electric sunroof	-	✓
Exhaust	Dual chrome	Dual chrome
Fog lights	■	✓
Headlights	Halogen	HID with washers
- auto on/off	✓	✓
- auto leveling beam height	-	✓
LED brake lights	✓	With smoked lens
Rear tailgate spoiler with integrated brake light	✓	✓
Remote keyless entry	✓	✓
Windscreens wipers - front	2-speed, variable intermittent and vehicle speed-sensing	2-speed, variable intermittent and vehicle speed-sensing
- rear	Intermittent (with reverse gear synchronisation)	Intermittent (with reverse gear synchronisation)
INTERIOR		
Accessory power outlet (12v)	✓	✓
Air conditioning	Automatic climate control with rear ventilation	Tri-zone automatic climate control with rear control
Aluminium door sill garnish	-	✓
Ashtray	✓	✓
Central locking	✓	✓
Centre armrest - 1st row seats	Adjustable angle	Adjustable angle
- 2nd row seat	✓	✓
Cigarette lighter	✓	✓
Comprehensive interior illumination	✓	✓
Cruise control	✓	✓
Cup holders - number of cup holders	6	6
- number of bottle holders	4	4
Digital clock	✓	✓
Door pockets	All doors	All doors
Driver's footrest	✓	✓
Driver seat	Manual height adjustment	Power adjustment (8-way)
Dust and pollen filter	✓	✓
Foldable centre table	1st row seats	1st row seats
Front door lining illumination	-	✓
Headrests	7	7
Heated front seats	-	✓
Leather wrapped gear shift knob	-	✓
Leather wrapped steering wheel	✓	✓
Lights-on warning (audible)	✓	✓
Multi-information Display (MID)	✓	✓
- instant fuel economy	✓	✓
- average fuel economy	✓	✓
- distance to empty	✓	✓
- outside temperature display	✓	✓
- odometer	✓	✓
- trip meter (Trip A/Trip B)	✓	✓
Power windows with key off operation	✓	✓
- auto up/down	Driver only	Driver only
Seats - 1st row	Fully reclining	Fully reclining
- 2nd row	60:40 split with fold down	60:40 split with fold down
- 3rd row	Retractable	Power retractable
Seat back pocket	Driver and front passenger	Driver and front passenger
Seat trim material	Cloth	Leather appointed
Seatbelt height adjuster	Driver and front passenger	Driver and front passenger

Odyssey Specifications

Description	Odyssey	Odyssey Luxury
INTERIOR CONT.		
Steering column	Tilt and telescopic adjustment	Tilt and telescopic adjustment
Tachometer	✓	✓
Vanity mirror	Driver and front passenger with illumination	Driver and front passenger with illumination
Windows	UV cut glass and heat absorbing	UV cut glass and heat absorbing
SAFETY AND SECURITY		
Active headrests	Driver and front passenger	Driver and front passenger
Advanced Compatibility Engineering (ACE) body structure	✓	✓
Airbags i-SRS - front	Driver and front passenger	Driver and front passenger
- side (with OPDS on passenger side)	Driver and front passenger	Driver and front passenger
- curtain	Full length	Full length
Airbags SRS	✓	✓
Anti-lock Braking System (ABS)	✓	✓
Brake Assist (BA)	✓	✓
Child proof rear door locks	✓	✓
Child safety seat anchorages	5	5
Electronic Brake-force Distribution (EBD)	✓	✓
Hazard warning lights	✓	✓
High mounted brake light	✓	✓
Honda G-force Control technology (G-Con)	✓	✓
Immobiliser system	✓	✓
Motion Adaptive EPS (MAEPS)	✓	✓
Park brake	Foot operated	Foot operated
Progressive crumple zones	✓	✓
Rear parking sensors	■	■
Rear view mirror	Day/night type	Day/night type
Reversing camera	✓	✓
Seatbelt with pretensioner and load limiter	Driver and front passenger	Driver and front passenger
Seatbelt reminder	Driver	Driver
Seatbelts - 3 point ELR	1st and 3rd row	1st and 3rd row
- 3 point ELR/ALR	2nd row	2nd row
Security alarm system	✓	✓
Side impact protection door beams	✓	✓
Steering column	Energy absorbing type	Energy absorbing type
Transmission shift lock	✓	✓
Vehicle Stability Assist (VSA) with Traction Control System (TCS)	✓	✓
DIMENSIONS/WEIGHTS/CAPACITIES		
Overall length (mm)	4810	4810
Overall width (mm)	1800	1800
Overall height (mm)	1545	1545
Wheelbase (mm)	2830	2830
Track (mm) - front	1560	1560
- rear	1560	1560
Ground clearance (mm) - non-load	150	150
- full-load	110	110
Kerb weight (kg)	1645	1700
Maximum permissible weight (kg)	2270	2300
Fuel tank capacity (litres)	60	60
Maximum towing capacity (kg) - trailer with brakes	1000	1000
- trailer without brakes	450	450
- down force/tongue load	50	50
Boot capacity (litres) - VDA standard		
- 3rd row seat up	259	259
- 3rd row seat down	708	708
Seating capacity	7	7
Turning circle, kerb to kerb (metres)	10.8	10.8
TYRES AND WHEELS		
Wheel size	16 x 6.5 JJ	17 x 7.0 JJ
Tyre size	215/60R16 95H	215/55R17 94V
Wheel type	Alloy	Alloy
Spare wheel type	Temporary tyre	Temporary tyre
MULTIMEDIA		
Satellite Navigation with CD/DVD playback compatibility ¹ , reversing camera, touch screen and SUNA Live Traffic Updates ²	✓	✓
Antenna	In-glass type	In-glass type
Bluetooth [®] audio streaming ³	✓	✓
Hands-free telephone Bluetooth [®] connectivity ⁴	✓	✓
Speakers - front door	2	2
- front tweeters	2	2
- rear door	2	2
Speed-sensitive Volume Compensation (SVC)	✓	✓
Steering wheel-mounted audio, cruise control and Bluetooth [®] telephone controls ⁵	✓	✓
USB connectivity with iPod integration ⁶	✓	✓
WARRANTY		
Vehicle - 3-year or 100,000km warranty ¹	✓	✓
Vehicle - 6-year rust perforation warranty ¹	✓	✓



JAZZ



CR-Z



CITY



CIVIC



CIVIC HYBRID



CIVIC HATCH



INSIGHT



ACCORD



ACCORD EURO



CR-V



ODYSSEY

✓ Standard feature. ■ Accessory option. - Not available. *The figures quoted are based on ADR81/02 test results. †DVD playback operates only when vehicle is stationary. #SUNA is a registered trademark of Intelematics Pty. Ltd. Coverage includes Melbourne, Sydney, Brisbane, Gold Coast, Adelaide, Perth and Canberra metropolitan areas. Refer to www.sunattraffic.com.au for full details. *The Bluetooth word mark is owned by the Bluetooth SIG, Inc. and use of such mark by Honda is under licence. Please check the list of compatible phones at honda.com.au/bluetooth. †Honda warranties apply where due care is exercised by the owner and the vehicle is maintained in accordance with the vehicle's owners manual. Please refer to Honda's warranty documentation for exclusions and conditions. #iPod is integrated through vehicle's audio system display for iPods from 5th Generation onwards and all iPod Nanos. Older iPod models will only operate through the audio system when controlled through the iPod, and firmware updates may be required to achieve compatibility with the vehicle's audio system display and steering wheel mounted audio controls. Please refer to your iPod User Guide for information on iPod firmware updates.

Try on a few accessories

Enhance your Odyssey's already sleek exterior with some well-chosen Modulo Accessories. Mix and match from this range of beautifully finished components to make your Odyssey more luxurious, aerodynamic, and even more your own.

Odyssey Luxury in Aurora Rosewood shown featuring the following accessories:

- 17-inch alloy wheels (Luxury only)
- Door visors
- Rear park assist
- Tailgate spoiler

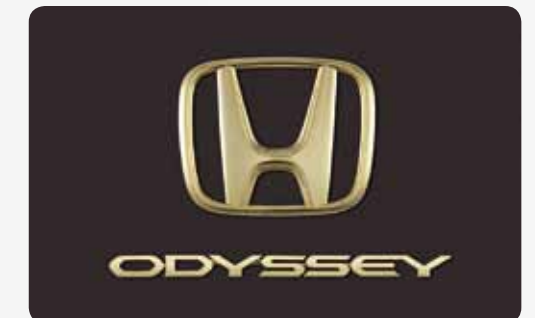


See your Honda Dealer for advice regarding Genuine Honda Accessories. Pictured accessories are all sold separately. All Genuine Honda Accessories installed at the time of retail sale of a new motor vehicle are covered by Honda's 3-year/100,000km Warranty. If installed after retail sale, they are covered for the remainder of the warranty or a minimum of 12 months – whichever is greater – provided that the accessory is fitted only to the vehicle for which it was intended by Honda Motor Co.



Alloy wheels

An absolute essential for discerning drivers. There are two designs available for the base model, a 16-inch six twin spoke alloy, or a 16-inch seven spoke alloy.



Gold-style badges

A subtle change that makes a big impact. This 3-piece set adds a distinctive touch, and helps your Odyssey stand out from the pack.



Fog lights

When the weather takes a turn for the worse, these precision optics will enhance your visibility. And thanks to their integrated design, they'll also enhance the appearance of your Odyssey. (For base only).

Protection has never looked so good

These Genuine Honda Accessories offer protection and storage solutions especially for your Odyssey. From floor mats to roof rack attachments, you'll find everything you need to help keep your Odyssey in showroom condition, and ready for adventure. To find out more, simply contact your local Dealer or visit honda.com.au/odyssey

Other accessories include:

- Bonnet protector
- Car body cover
- Headlight protector set
- Leather maintenance kit
- Roof rack set[‡]
- Tongue and tow ball storage bag
- Touch-up paint
- Wheel lock nut set



Luggage area protector tray

With all the bits and bobs that go in the boot it's a good idea to protect the cargo floor from scuffs and spills. And that's exactly what you can expect from this precise fitting, high-sided protector tray.



Rear bumper and bootlip protector

This neat and tidy liner fits over the bootlip protecting it from scuffs and scratches.



Cargo net

This tight-fitting, flexible cord mesh keeps your odds and ends safely tucked away to guard them and the interior from damage.



Rear tailgate garnish set

This garnish set helps protect the tailgate from damage whilst looking great too.



Deluxe tailored mat set

These high quality, durable mats complement the Odyssey's stylish interior and help reduce the daily wear and tear on your carpeting.



Mud guard set

This subtle 4-piece set complements the Odyssey's elegant aesthetic and helps protect its pristine paintwork. (For base only).



Towbar kit

A complete solution designed to Honda's strict specifications.



Roof box

This aerodynamically-designed roof-mounted storage box is built to last and has a weight capacity of 26kg.



Bike attachment

Enjoy the outdoors with the whole family. This handy bike attachment is the easy way to transport your bikes without crowding the cabin.



Ski/snowboard attachment

Now you can comfortably accommodate a family trip to the ski fields with this roof attachment for both skis or snowboards.



Kayak attachment

Even the size of your toys won't stop you from big adventures in the Odyssey with this secure roof-mounted kayak attachment.



Surfboard attachment

Easy to connect and remove, this device lets you play the professional from Monday to Friday and surf the weekend away.

See your Honda Dealer for advice regarding Genuine Honda Accessories. Pictured accessories are all sold separately. All Genuine Honda Accessories installed at the time of retail sale of a new motor vehicle are covered by Honda's 3-year/100,000km Warranty. If installed after retail sale, they are covered for the remainder of the warranty or a minimum of 12 months – whichever is greater – provided that the accessory is fitted only to the vehicle for which it was intended by Honda Motor Co.

[‡]In the interest of aerodynamics, Honda recommends roof rack set be removed when not in use.

You're never alone in a Honda

Buy an Odyssey and you'll be amazed at how well you'll be looked after.

The care starts with a 3-year/100,000km warranty and 6-year rust perforation warranty.[§]

You'll also have access to HondaONE, our exclusive website that gives you up-to-date service history, vehicle records, maintenance tips and service reminders.

And by using your Honda Dealer, you'll also be sure that they'll protect your investment by using Honda Genuine Parts.

So with all these benefits, your Odyssey will be as pleasurable to own as it is to drive.

Warranty

For extra peace of mind, why not purchase Honda Warranty Plus? In addition to Honda's New Vehicle Warranty we can offer a host of benefits exclusive to Warranty Plus owners, with no claim limit for labour or parts. For more information visit honda.com.au/warranty

Insurance

If you're looking for cover every bit as reliable as your Odyssey, you really need Honda Motor Vehicle Insurance.

You'll enjoy a range of benefits, including:

- 3-year new replacement if your Honda is a total loss
- Genuine Honda approved parts for the first 3 years
- Lifetime guarantee on authorised repairs.

Approved applicants only. Normal underwriting and excess payment rules apply.^Δ For more information visit honda.com.au/insurance

Finance

Whether you're buying a Honda for yourself or a business, we have a wide range of flexible finance and leasing options.

So see your Honda Dealer to find a financial solution that suits you as perfectly as your Odyssey does. For more information visit honda.com.au/finance_personal

What's next?

As an Odyssey owner, you're part of a brand that's always doing something new. Because if there's one thing Honda prides itself on, it's always asking, "What's next?"

It was this inventive spirit that led to the stylish, prestige exterior design of the Odyssey.

It also produced the new CR-Z, the world's first sporty hybrid coupe. And that's not our first 'world first' either.

There's the FCX Clarity, which is powered by a hydrogen cell and whose only emission is water vapour.

Or the unique CIGS solar cells that produce twice as much energy than they take to make.

Then of course there's ASIMO, the world's most advanced humanoid robot and the incredibly fuel-efficient HondaJet.

And now there's a glimpse of the future with the altogether different U3-X, a personal mobility device that takes you in any direction by simply shifting your weight.

All of these things, which were once dreams, are now realities thanks to Honda.

So what's next?



[§]Honda warranties apply where due care is exercised by the owner and the vehicle is maintained in accordance with the Owner's Warranty and Service Manual. Please visit honda.com.au/warranty for full terms and conditions. ^ΔHonda Insurance is underwritten by Allianz Australia Insurance Limited Licence No. 234 708 ABN 15 000 122 850 (Allianz). In arranging this insurance Honda Australia Pty Ltd ABN 66 004 759 611 and the authorised dealers act as agents of Allianz and not as your agent. In entering into a contract of insurance for this policy, you acknowledge that this Product Disclosure Statement (PDS), your Schedule and any other document which we tell you forms part of this policy (Policy Documentation), sets out the entire agreement that exists between you and Allianz in connection with this policy. You also acknowledge that you have not relied on any prior representations which are not expressly included in or are otherwise inconsistent with the Policy Documentation. Neither Honda nor any of its related companies have any liability in respect of this policy.