

ALL 4
THE STYLE
THE GRIP
THE THRILL
THE SMILE
THE LIBERTY DRIVER



LIBERTY | 2011

ALL 4 THE DRIVER™



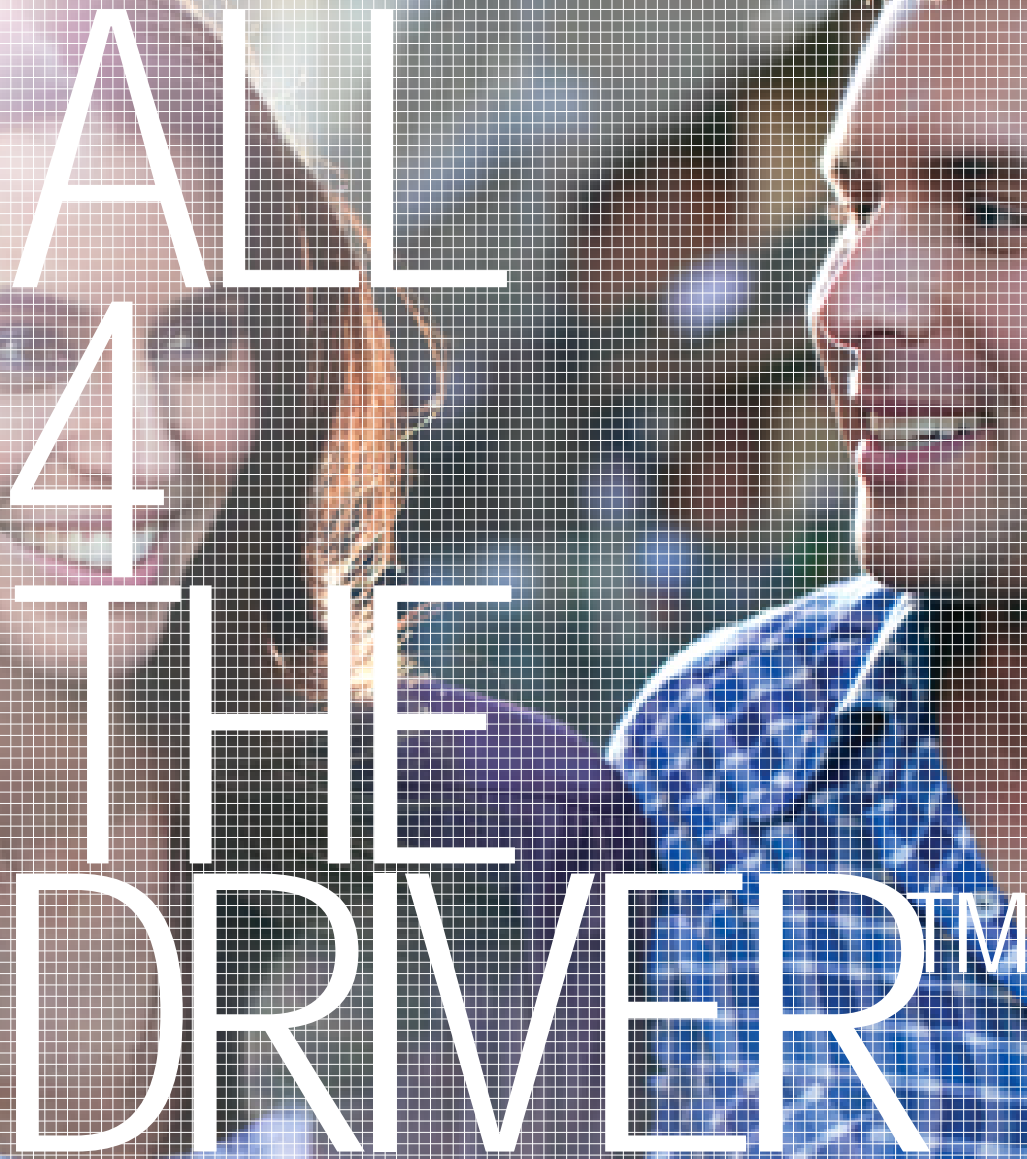
SUBARU

ALL 4
THE
THRILL





IMAGE: LIBERTY 2.5 GT PREMIUM SEDAN



ALL 4 THE DRIVER™

All 4 the Driver™ is far more than a simple phrase for those of us that work for Subaru. It's a philosophy that ensures a culture that's united in its passion for putting you, our customer, first.

Basically, it's about creating an extraordinary experience for you, each and every time. It means we have an uncompromising commitment to quality, especially in our dealings with you and how we make you feel. At Subaru we are all accountable for making All 4 the Driver a real experience for you. And we're all motivated by that challenge.

To find the Subaru that is right for you - don't take our word for it, Drive It Your Way®. After all, there's only one way to find out how a Subaru feels, and that's by getting behind the wheel. Put your favourite Subaru to the test on the kind of roads where you need it to perform most - from a quick, local dash around the block, to a longer freeway cruise, there's a test drive route to suit you. Ask your local Subaru Retailer for details.



Symmetrical All-Wheel Drive
Horizontally-opposed Boxer engine
Five-star ANCAP occupant safety

ALL 4 THE PERFORMANCE, THE SAFETY, THE RETAINED VALUE

Performance

Our Symmetrical All-Wheel Drive and horizontally-opposed Boxer engine technology have been developed to work together to provide superior handling, performance and balance - which gives our Drivers greater confidence. Confidence that makes for pure driving pleasure.

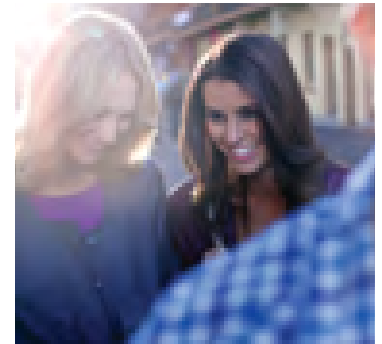
Safety

Thanks to its uniquely balanced design, every Subaru is made to grip the road in just about any condition. A ring-shaped passenger safety cell and advanced crumple zone technology help protect Subaru Drivers and passengers from serious injuries. It's part of the reason every Subaru is awarded a five-star ANCAP occupant safety rating – the highest occupant safety rating available in Australia – ensuring a worry-free trip, wherever you're heading.

Retained Value

Excellent retained value is no accident. Subaru starts with outstanding cars, adds world famous advanced driving technologies and provides every owner with maximum five-star occupant safety. But it doesn't end there. Our highly skilled service technicians at over 100 Subaru service centres around Australia ensure your Subaru is kept in peak condition at all times. Subaru has had an active focus on the retained value of all our models for many years. This is the result of delivering exceptional performance, safety technologies and DataDot™ theft protection to ensure that owning a Subaru is a good investment.

ALL OF THIS ADDS UP TO A BETTER EXPERIENCE FOR THE DRIVER.



THE
DIFFERENCE
IS OUR
DNA



ALL 4 THE MUD THE SWEAT THE CHEERS THE SUBARU DRIVER



Rallying has always been a brutally tough motorsport. With uncompromising terrain, wildly fluctuating conditions, and constant demands on the cars, it's one of the most challenging sports in the world – and a perfect testing ground for Subaru. We were part of the World Rally Championship for 19 years – and while we were fine-tuning our unique technologies, we were also winning championships. We won the World Rally Championship Manufacturers' title three times, and the driver's title three times as well.

And our decade of dominance in the Australian Rally Championship – from 1996 to 2005 – is a testament not only to our ongoing passion for innovative design and engineering, but our unique understanding of Australian driving conditions. It's a passion that flows through our earliest designs and drawings, into our race-bred testing regime, and into the car you drive.

Pioneering performance since 1958

From the introduction of the Subaru 360 in 1958 to Subaru's three consecutive World Rally Championship (WRC) Manufacturers' titles from 1995 to 1997, Subaru has a long history of engineering and motor sports achievement. Here's a quick look at the Subaru journey...

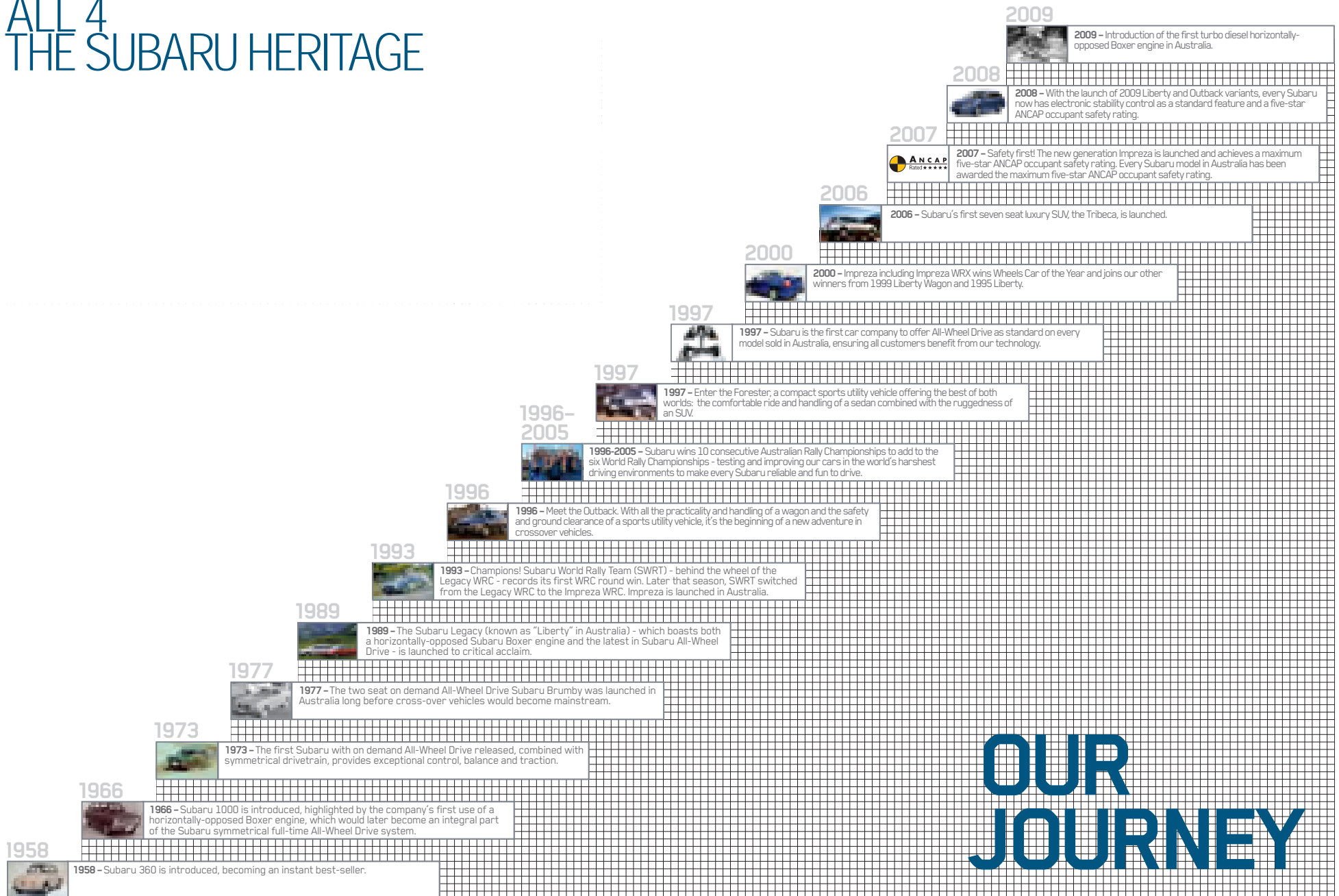


AUSTRALIAN
MANUFACTURERS'
CHAMPION



AUSTRALIAN RALLY DRIVER'S
CHAMPIONSHIP

ALL 4 THE SUBARU HERITAGE



OUR JOURNEY

ALL 4 THE LUXURY AND EXHILARATING DRIVE

Confidence

It reveals itself in the corners. In the wet. In the moments when it really counts. It's the same confidence that turns an everyday drive into an exhilarating ride. That's why we've made driver confidence the cornerstone of everything we do at Subaru. Every innovation, every technological advancement, every intricate detail in a Subaru is there to inspire confidence. And give you a more enjoyable drive, whatever road you're travelling on.

The Liberty of choice

Everyone has a different style of driving. Everyone faces unique driving conditions. And everyone puts different performance demands on their car. That's why we don't make just one Liberty – we make several.

All different. And all with a unique personality. So there's sure to be one that fits perfectly with yours. Whether it's the exhilarating Liberty 2.5 GT Premium or the luxurious Liberty 3.6R Premium you'll experience sophistication and high performance. Or choose the exciting Liberty 2.5i Sports model or the well appointed Liberty 2.5i range for economy with rewarding performance.



IMAGE: LIBERTY 2.5i PREMIUM SEDAN AND WAGON



ALL 4 THE FEELING ON THE INSIDE

Step inside the Liberty, and you're greeted by an impressively luxurious interior. It starts with luxury appointments like dual-zone climate control air-conditioning, to power windows and mirrors, every element of the Liberty's stylish interior has been designed around comfort. And the most luxurious appointment of all?

Space. Everyone – especially those in the back – will find big trips a breeze, with room to spread out and get comfy. As for the driver, you'll also notice that while you've got plenty of room, everything's within easy reach – so you never have to concentrate on anything other than the road.



IMAGE: LIBERTY 2.5i SPORTS PREMIUM WITH OPTIONAL MCINTOSH ENTERTAINMENT SYSTEM WITH SATELLITE NAVIGATION



20" 82-4 910





A 2.5-litre Boxer engine capable of producing 123kW of power, and 229Nm of torque, is matched by the balance of Subaru's Symmetrical All-Wheel Drive system and the added safety of Vehicle Dynamics Control. Inside, the Liberty 2.5i features a six-stack in-dash CD player with auxiliary jack¹, dual-zone climate control air-conditioning, *Bluetooth*[®] wireless technology² and power windows and mirrors. Plus, rear privacy glass, 17-inch alloy wheels, the ease of hill holder and the option of a six-speed manual or Lineartronic™ CVT. And of course, the added safety of seven SRS³ airbags, including dual front, front side, curtain and driver's knee protection.

Choose the Liberty 2.5i Premium, and you'll enjoy Lineartronic™ CVT as standard, an electric sunroof, and the extra luxury of leather⁴ seats including an eight-way power driver's seat with dual memory and lumbar support.

You also have the option of an eight-inch touch screen built-in satellite navigation system with *Bluetooth*[®] wireless technology², voice recognition, a single CD/DVD⁵ player with six speakers, RCA jacks⁶ and rear view reverse camera.

LIBERTY 2.5i AND LIBERTY 2.5i PREMIUM

ALL 4
THE STYLE
THE COMFORT
THE SAFETY
THE DRIVER

1. Auxiliary jack not available if satellite navigation is fitted.
2. *Bluetooth*[®] is a registered trademark of Bluetooth SIG Inc. System operation ability is subject to the *Bluetooth*[®] wireless technology specification of individual's phone.
3. SRS: Supplemental Restraint System. Effective when used in conjunction with seatbelts.
4. Some parts of seating are not full natural leather.
5. DVD only operates when vehicle is stationary.
6. RCA jacks replace auxiliary jack when satellite navigation is fitted.



IMAGE: LIBERTY 2.5i PREMIUM SEDAN
CENTRE: OPTIONAL SATELLITE NAVIGATION SYSTEM
FAR RIGHT: 17-INCH ALLOY WHEEL





IMAGE: LIBERTY 2.5i SPORTS WAGON
CENTRE: MCINTOSH ENTERTAINMENT SYSTEM WITH SATELLITE
NAVIGATION (OPTIONAL ON LIBERTY 2.5i SPORTS PREMIUM MODELS)
FAR RIGHT: 18-INCH ALLOY WHEEL

On top of the 2.5-litre horizontally-opposed Boxer engine, the Liberty 2.5i Sports and Liberty 2.5i Sports Premium models set themselves apart with Lineartronic™ CVT as standard, high-performance Bilstein suspension, coupled with sports pedals, sports body kit and 18-inch alloy wheels for a more aggressive stance on the road. Xenon low beam headlights complete the signature sports styling.

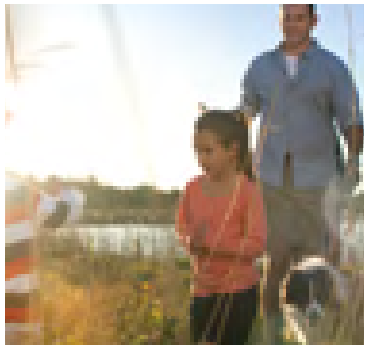
The Liberty 2.5i Sports Premium adds a little extra luxury, complementing the sports package with leather¹ seats including an eight-way power driver's seat with dual memory and lumbar support, electric sunroof, and the option of the superior sound of a 10-speaker

McIntosh entertainment system with built-in satellite navigation, Bluetooth® wireless technology², voice recognition, a single CD/DVD³ player, RCA jacks⁴ and rear view reverse camera.

LIBERTY 2.5i SPORTS AND LIBERTY 2.5i SPORTS PREMIUM

ALL 4
THE POWER
THE TORQUE
THE SPORTY FEEL
THE DRIVER

1. Some parts of seating are not full natural leather.
2. Bluetooth® is a registered trademark of Bluetooth SIG Inc. System operation ability is subject to the Bluetooth® wireless technology specification of individual's phone.
3. DVD only operates when vehicle is stationary.
4. RCA jacks replace auxiliary jack when satellite navigation is fitted.



LIBERTY 2.5 GT PREMIUM

For drivers who demand the performance and handling of a sports car with a high level of sophistication. The Liberty 2.5 GT Premium has been designed with an award-winning turbocharged 2.5-litre horizontally-opposed Boxer engine¹ capable of producing an impressive 195kW of power.

It's also packed with innovative features – from push-start ignition with smart key, to rain sensing wipers, and dusk sensing headlights. The soundtrack is pumped through the 10-speaker McIntosh entertainment system with a single CD/DVD² player, and staying on track and in touch is made simple with built in satellite navigation, *Bluetooth*³ wireless technology³, voice recognition, RCA jacks and a rear view reverse camera.

The high-end performance of the Liberty 2.5 GT Premium is also reflected in features like SI-DRIVE, Bilstein suspension, 18-inch alloy wheels, and the choice of a responsive five-speed automatic with paddle gearshift controls, or a six-speed manual gearbox.

ALL 4
THE THRILL
THE SOPHISTICATION
THE PERFORMANCE
THE DRIVER

1. This engine requires 95 RON unleaded fuel. This fuel is not available in all areas of Australia.
2. DVD only operates when vehicle is stationary.
3. *Bluetooth*[®] is a registered trademark of Bluetooth SIG Inc. System operation ability is subject to the *Bluetooth*[®] wireless technology specification of individual's phone.



IMAGE: LIBERTY 2.5 GT PREMIUM SEDAN
FAR LEFT: PUSH-START IGNITION BUTTON
CENTRE: 18-INCH ALLOY WHEEL







IMAGE: LIBERTY 3.6R PREMIUM SEDAN
FAR LEFT: STEERING WHEEL CONTROLS
CENTRE: 17-INCH ALLOY WHEEL

The luxurious Liberty 3.6R Premium sedan includes a host of innovative features to make driving more comfortable, more stylish and more enjoyable. This model gives you the added performance, and the superior pulling power of a 3.6-litre six-cylinder Boxer engine.

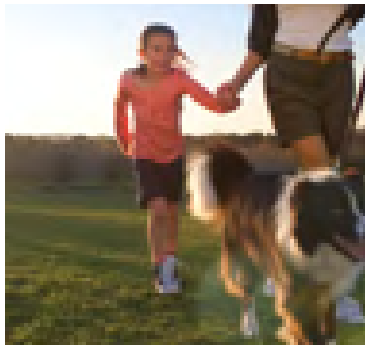
As at home with hard work as it is in a gentle cruise, it offers sportsmanlike handling and responsiveness, with a sense of elegance. The Liberty 3.6R Premium's features include a five-speed automatic transmission with manual mode, SI-DRIVE, push-start ignition with smart key, as well as rain sensing wipers, and dusk sensing headlights.

The superior sound of a 10-speaker McIntosh entertainment system with built-in satellite navigation, Bluetooth® wireless technology¹ and voice recognition is standard. It also features a single CD/DVD² player, RCA jacks and a rear view reverse camera.

LIBERTY 3.6R PREMIUM

ALL 4
THE LUXURY
THE ELEGANCE
THE ADDED
PERFORMANCE
THE DRIVER

1. Bluetooth® is a registered trademark of Bluetooth SIG Inc. System operation ability is subject to the Bluetooth® wireless technology specification of individual's phone.
2. DVD only operates when vehicle is stationary.



ALL OR NOTHING

We pioneered Symmetrical All-Wheel Drive (SAWD) over 30 years ago and it remains one of our defining achievements. The combination of SAWD and the Traction Control System incorporated within the Subaru Vehicle Dynamics Control system (VDC) optimises tyre traction

and provides the driver with outstanding control. Partnered with our horizontally-opposed Boxer engine, and symmetrical drivetrain, it gives you a sense of poise and balance that not only inspires confidence, but delivers optimum safety – whatever the conditions.



The benefit of symmetry

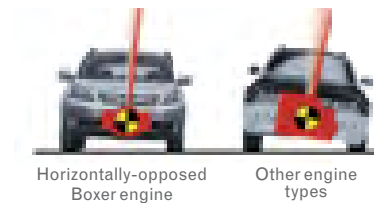
The drivetrain of your Subaru is perfectly symmetrical with the engine, transmission, propeller shaft and rear differential all arranged in a straight line.

The result is ideal weight distribution, a low centre of gravity, and perfect balance giving you sure-footed control, and smooth, receptive handling.

Three distinctive advantages

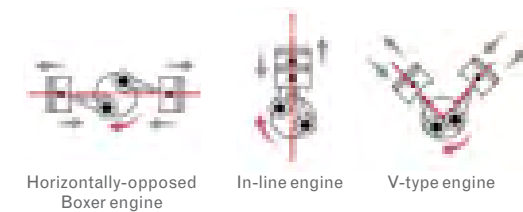
1. Better balance

A low centre of gravity means less body roll, flatter cornering and improved response with the benefits of SAWD grip.



2. Less vibration

Our horizontally-opposed Boxer engines are flat in shape and sit low in the engine bay, meaning less vibration, noise and greater cabin comfort.



3. More grip and traction

SAWD offers distinct advantages over two-wheel drives when cornering by optimising traction and reducing the likelihood of oversteer or understeer.



Transfers power from the wheels that slip to those with grip

Sure-footed control

The sense of control you feel behind the wheel owes a lot to our intelligent chassis design and finely tuned suspension. The light but rigid materials in the chassis give the car extra agility,

and the McPherson strut-type independent front suspension, a double wishbone rear suspension and speed sensitive power-assisted steering combine to provide a smooth, controlled ride, with lots of road-holding grip.



Front suspension

A wide track rigid front suspension produces more responsive steering and stable cornering, optimising tyre contact with the road surface.



Rear suspension

The double wishbone rear suspension maximises tyre contact with the road ensuring a smooth, controlled ride with outstanding handling, comfort and quietness.



ALL 4 THE EXHILARATION

You feel the difference on your very first drive. That quiet, smooth acceleration and light-footed responsiveness that has become the hallmark of the horizontally-opposed Subaru Boxer engine. Tuned for mid-range torque as well as top-end power, it offers the driver impressive performance – even when carrying a big load.

ACTIVE CONTROL

The Liberty 2.5-litre DOHC turbocharged Boxer engine features our Dual Active Valve Control System (DAVCS), as does the 3.6-litre DOHC Boxer engine. DAVCS varies inlet and exhaust camshaft timing, improving fuel economy, power and torque.

INTELLIGENT TIMING

The Liberty 2.5-litre SOHC engine utilises our intelligent Active Valve Lift System (i-AVLS). i-AVLS varies the inlet valve lift and timing to improve fuel efficiency, power and low speed torque.



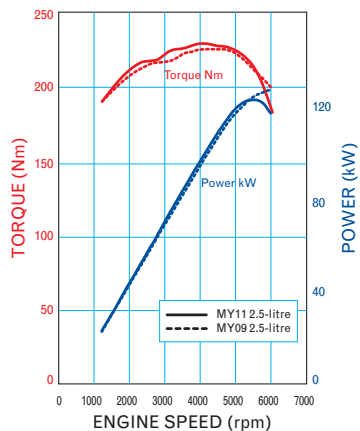
SUBARU 2.5-LITRE FOUR-CYLINDER SOHC BOXER ENGINE



Max. power: 123kW @ 5,600rpm
Max. torque: 229Nm @ 4,000rpm

The 2.5-litre naturally aspirated engine delivers 123kW of power at 5,600rpm; and provides the towing capability of 229Nm of torque at 4,000rpm.

That translates to an even, well-balanced drive, with strong torque performance in both low and high rev ranges. Fuel economy is impressive with only 8.4^l litres required per 100km giving you extended range with lower emissions.



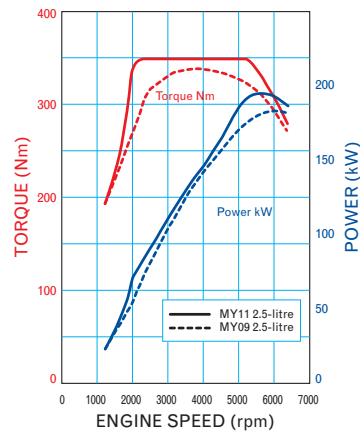
SUBARU 2.5-LITRE FOUR-CYLINDER DOHC TURBOCHARGED BOXER ENGINE



Max. power: 195kW @ 5,600rpm
Max. torque: 350Nm @ 2,400-5,200rpm

Not satisfied with winning the 2.0-2.5-litre class of the 2008 International Engine of the Year Award – we've taken the 2.5-litre turbocharged Boxer engine even further. Producing a supreme 195kW of power at 5,600rpm, and delivering, a responsive, high-performance drive.

There's also vast pulling power, with a maximum 350Nm of torque available at 2,400rpm, continuing in a flat line all the way to 5,200rpm – giving you power right through the rev range.



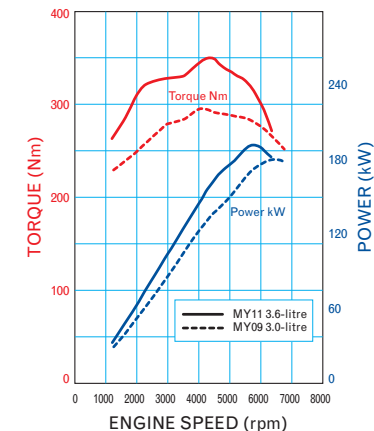
SUBARU 3.6-LITRE SIX-CYLINDER DOHC BOXER ENGINE



Max. power: 191kW @ 5,600rpm
Max. torque: 350Nm @ 4,400rpm

The powerful, 3.6-litre horizontally-opposed Boxer engine produces an impressive 191kW of power at 5,600rpm. And it can carry a load too – with 350Nm of pulling power at 4,400rpm.

The torque curve shows the engine's consistent pulling ability throughout the rev range, while the power curve demonstrates a smooth, linear delivery from very low to high revs – giving you the ideal combination of drivability and performance.



1. Based on Lineartronic™ CVT model tested in accordance with the ADR81/02 'combined cycle' test.

ALL 4 THE PERFORMANCE

Manual transmission

The six-speed manual transmission available on selected Liberty models has been specifically developed to deliver improved driveability, and a quieter, more fuel efficient ride.

The six-speed's wider gear ratio spread translates to faster acceleration in the lower gears, and improved fuel consumption—for an all-round stronger performance.



Automatic transmission

Lineartronic™ CVT:

The 2.5-litre naturally aspirated automatic Liberty range features an innovation called Lineartronic™ Continuously Variable Transmission (CVT) – Subaru's first longitudinally mounted CVT system for an All-Wheel Drive production vehicle. What makes it so special is that unlike conventional automatics – which use fixed gear ratios – the CVT gives you smooth acceleration with no discernible steps or shifts.

Five-speed automatic:

You'll find the five-speed automatic transmission in the Liberty 2.5 GT Premium and the Liberty 3.6R Premium models. It utilises a Variable Torque Distribution (VTD) centre differential that sets a drive split of 45 percent / 55 percent front to rear to ensure greater balance and control. The five-speed automatic transmission can be driven in full automatic mode or manual mode using the paddle gear shift on the steering column, and also interacts with SI-DRIVE to tailor the gear changes and responsiveness of the vehicle to the driver's needs.



Always in the right gear

All automatic transmissions come with Adaptive Control¹ featuring Hill Climb Control, Sudden Accelerator Release Control, Braking Control and Cornering Control – that give you greater confidence in a range of different driving situations. The selectable

manual mode of the automatic transmissions allows you to 'shift' manually using steering wheel paddle controls. When in drive, you can engage manual mode simply by moving the gear selector towards you, or engage temporary manual mode immediately by using the steering wheel paddle controls.

1. Only applies to five-speed automatic in S# mode and Lineartronic™ CVT.

THREE DRIVES, ONE CAR



Every drive's different. From the trip to work, to the highway cruise, to the path less travelled, you'll always face different conditions, and place different demands on the car. That's why we developed Subaru Intelligent Drive (SI-DRIVE) giving you three driving modes to match

every challenge you experience on the road. SI-DRIVE regulates the engine control unit, the electronic throttle and the transmission control unit (in automatic models) and is standard in Liberty 2.5 GT Premium and Liberty 3.6R Premium models.

1. Intelligent (I) mode

Intelligent mode gives you a well-balanced, economical performance, with smooth throttle control and optimum fuel efficiency when combined with sensible driving. It's ideal for the daily commute to work, freeway driving and in heavy traffic – where power isn't essential.



2. Sport (S) mode

Sport mode's linear acceleration turns an everyday drive into an exhilarating experience – with heightened acceleration and sporty all-round performance.



3. Sport Sharp (S#) mode

For the true driving enthusiast. Sport Sharp mode significantly boosts responsiveness with even the lightest touch on the throttle. In automatic models, gearshift timing is set at higher engine speeds for thrilling performance.



SAFETY FIRST SECOND AND THIRD

FIRST – BALANCE

Symmetrical All-Wheel Drive (SAWD) is an integral part of the Subaru driving experience. SAWD enhances control by taking advantage of the traction offered by all four tyres distributing power. Which means driving on low friction surfaces like wet or snowy roads and muddy tracks becomes much safer.

SECOND – STABILITY

All Libertys come standard with a high level of collision avoidance technologies – an electronic driver assist system called Vehicle Dynamics Control (VDC). This is not just Electronic Stability Control (ESC) but a complete system of safety measures.

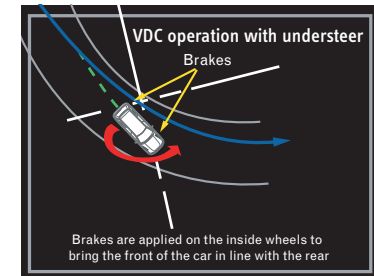
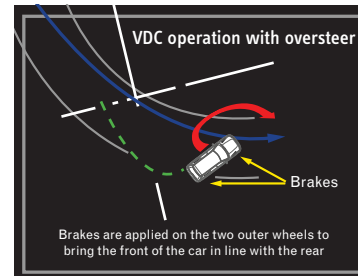
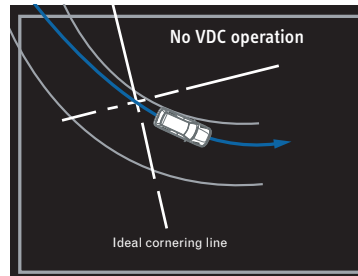
Subaru's VDC system is made up of both stability and braking technologies:

- Electronic Stability Control (ESC)
- Traction Control System (TCS)
- TCS Limited Slip Device (LSD)
- Anti-Lock Braking System (ABS)
- Electronic Brakeforce Distribution (EBD)
- Brake Assist

So in extreme situations – like when you have to swerve or brake suddenly – VDC is there to help. The VDC system is constantly analysing through an array of sensors, the parameters that affect vehicle stability of the Liberty whilst it's in motion.

Understeer or oversteer challenge even the best of drivers. The ESC technology incorporated within the VDC system aids the driver in maintaining control during cornering and emergency manoeuvres. When the road conditions are particularly challenging such as a muddy track the VDC Traction Control System and TCS Limited Slip Device kick in, minimising wheel spin and transferring power from the wheels that slip to the wheels with grip.

The Anti-lock Braking System (ABS) – including Electronic Brakeforce Distribution (EBD) and Brake Assist work together to help avoid wheels locking up, maximise stopping power and make sure the right amount of braking force is applied in an emergency. Every centimetre makes a difference. Put simply, all these features work together to give you control when you need it the most.

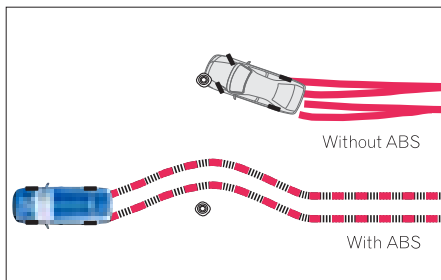


THIRD – PROTECTION

Five-star safety...

Every occupant can feel that much safer knowing the Liberty has been awarded the maximum five-star crashworthiness rating for occupant safety from the respected and independent Australasian New Car Assessment Program (ANCAP)¹.

Such a high safety rating has a lot to do with the innovative advancements that we've made an integral part of the Liberty. Advancements like the high-strength front seat frames and energy absorbing headrests that provide enhanced protection against whiplash in heavy rear-end collisions. All rear seatbelts come with Automatic Emergency Locking Retractors, and the front seatbelts feature pretensioners that hold you securely in place in an accident.



1. The Australasian New Car Assessment Program (ANCAP) gives consumers consistent information on the level of occupant protection provided by vehicles in serious front and side crashes.
 2. SRS: Supplemental Restraint System. Effective when used in conjunction with seatbelts.

... That's tough on the outside...

The Liberty's ring-shaped passenger safety cell is made to absorb impact – and features steel reinforcements, crumple zones and a strong, rigid build designed to help reduce injury in the event of an accident.

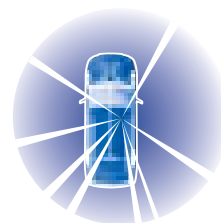


The chance of serious injury to the front occupants is further reduced by the ingenious positioning of the engine – low enough to slide below the cabin in a severe frontal collision. Plus the energy-absorbing collapsible steering column, and pedal intrusion limiting system help minimise driver injuries in a heavy frontal collision.



... And soft on the inside

Seven SRS² airbags help protect passengers from a heavy impact. Dual front, front side, curtain and driver's knee airbags come standard in all Liberty models.



A grand vision

Subaru design engineers take special care to optimise your field of vision from the driver's seat, without compromising the protection of all your occupants. The result is a strong passenger compartment, with outstanding visibility – helping you to avoid accidents in the first place.



Did you know?

All Subaru Liberty models are fitted with advanced engine immobilisers and DataDot™ technology. Approximately 7,000 microscopic dots are laser-etched with your vehicle's unique Vehicle Identification Number – making your Subaru a much less attractive target for potential thieves.

ALL 4 THE ENTERTAINMENT

Entertainment

Wherever your adventures take you, you'll always be accompanied by the perfect soundtrack. There are a variety of audio systems across the Liberty range to make the most of any road trip. And the best part is, it's all at your fingertips, with audio controls right there on the leather steering wheel.

Bluetooth® wireless technology¹

The Liberty range features Bluetooth® wireless technology¹ giving you hands-free calling from your mobile phone so you are always in touch (operation ability is subject to Bluetooth® specification of individual phone).

Satellite navigation

The Liberty 2.5i Premium with optional satellite navigation system, comes with a high definition, eight-inch VGA monitor showing you the best way home (thanks to the renowned Whereis™² Map database). A single CD/DVD³ player with MP3/WMA/iPod⁴ compatibility pumps out your soundtrack of choice with DOLBY PRO LOGIC sound through six speakers. It also features voice recognition, RCA jacks⁵ and a rear view reverse camera.

Standard audio

With six speakers, and a six-stack CD player that's MP3/WMA and iPod⁴ compatible, our standard audio system (available in the Liberty 2.5i, 2.5i Premium, 2.5i Sports and 2.5i Sports Premium models) is anything but standard. Door speakers and tweeter position ensure rich sound all through the cabin and an auxiliary jack⁶ means you can always listen to your favourite playlist on your iPod⁴.

McIntosh entertainment system with satellite navigation

The Liberty 2.5 GT Premium and Liberty 3.6R Premium feature a superior McIntosh entertainment system – for the ultimate in sound quality. You'll enjoy the incomparable, cabin-filling sound of 10 speakers – including a subwoofer, large tweeters and a separate amplifier – delivering your driving soundtrack from the single CD/DVD³ player with MP3/WMA/iPod⁴ compatibility. The McIntosh system also includes satellite navigation, voice recognition, RCA jacks⁵ and a rear view reverse camera. The McIntosh entertainment system with satellite navigation is also optional on the Liberty 2.5i Sports Premium models.



Satellite navigation system



McIntosh entertainment system with satellite navigation

1. Bluetooth® is a registered trademark of Bluetooth SIG Inc. System operation ability is subject to the Bluetooth® wireless technology specification of individual's phone. 2. Whereis is a registered trademark of Telstra Corporation Limited. 3. DVD only operates when vehicle is stationary. 4. iPod is a registered trademark of Apple Computer, Inc. 5. RCA jacks replace auxiliary jack when satellite navigation is fitted. 6. Auxiliary jack not available if satellite navigation is fitted.

WATCH THIS SPACE



Liberty 2.5i Sports Premium wagon with McIntosh entertainment system and satellite navigation shown

The Liberty doesn't just give your passengers the ability to spread out, it also offers plenty of room for all your belongings. And whether you're packing for a long weekend, or just trying to pack in all the groceries, the Liberty's large, wide-body design makes fitting everything in that much easier.

Remote keyless entry means you can unlock the car with a handful, and the retractable cargo security blind in the wagon means you'll be the only one who knows what's stowed on board. Easy-to-use release levers in the cargo area also allow you to instantly fold down the wagon's rear seats for an extra-large load.

A place for everything

The Liberty gives you the storage facilities for all of life's little knickknacks:

- Centre console cup holders with lid
- Moulded door pockets with bottle holders
- Seat back pocket nets
- Sunglass holder
- Front centre tray

Liberty 2.5i Premium interior shown



Sedan



Front centre console



Wagon



Rear seat cup holders



Sunglass holder



Seat back pocket nets



Moulded door pockets with bottle holders



IMAGE: LIBERTY 2.5 GT PREMIUM SEDAN



ALL 4
THE
POWER

THE LIBERTY RANGE

LIBERTY 2.5i

Available in sedan and wagon



LIBERTY 2.5i PREMIUM

Available in sedan and wagon

Optional satellite navigation also available



Liberty 2.5i Premium with optional satellite navigation shown

LIBERTY 2.5i SPORTS

Available in sedan and wagon



LIBERTY 2.5i SPORTS PREMIUM

Available in sedan and wagon

Optional McIntosh entertainment system with satellite navigation also available



Liberty 2.5i Sports Premium with optional McIntosh entertainment system with satellite navigation shown

THE LIBERTY RANGE

LIBERTY 2.5 GT PREMIUM

Available in sedan and wagon



LIBERTY 3.6R PREMIUM

Available in sedan



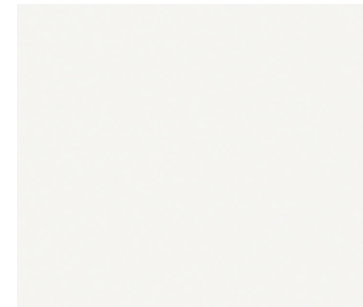
ALL 4 THE HUE THAT'S... YOU

One of the final choices – but one of the most important! The colour you choose for your Liberty makes a bold statement about who you are.

So we've made sure you've got lots of ways to express yourself – with a wide range of colours to make your Liberty more... you.



Note: Paint colours are representative only and subject to variation due to the printing process.



Satin white pearl



Steel silver metallic



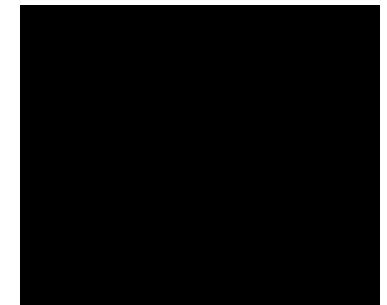
Sage green metallic



Galaxy blue silica



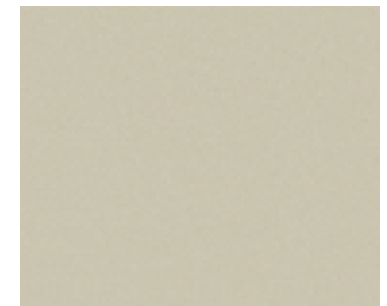
Graphite grey metallic



Crystal black silica



Camellia red pearl



Sunlight gold opal

MAKE A GENUINE DIFFERENCE

Subaru Genuine Accessories

The small things can sometimes make the biggest difference. So to set your Subaru apart, personalise it with any of our Subaru Genuine Accessories. From the added protection of carpet mats and cargo trays, to towing and adventure packed roof carrying systems, we have a great range of accessories to help you get your Subaru just right for your lifestyle. You can see the complete range of accessories at subaru.com.au

Genuine accessories Genuine warranty

All Subaru Genuine Accessories come with a manufacturer's warranty:

- When you have them fitted at the time you purchase your new vehicle (or at your first scheduled service by your Subaru Retailer) you get a three-year/unlimited-kilometre warranty.

- When you purchase accessories and have them fitted by your Subaru Retailer any other time you get a two-year/unlimited-kilometre warranty.
- When you purchase accessories from your Subaru Retailer at any other time, you get 12-month/unlimited kilometre warranty.

You can get full warranty information at subaru.com.au



Front bumper skirt¹



Sports grille - recessed mesh



Bonnet protector²



Side under skirt



Cargo step panel - stainless (wagon only)



Cargo tray



AVN satellite navigation³



Door visor

1. Suitable for Liberty 2.5i Sports and Liberty 2.5 GT Premium models. 2. Not suitable for Liberty 2.5 GT Premium. 3. Suitable for all models without factory fitted satellite navigation.

ALL 4
 THE LIFESTYLE
 THE PERSONALISING
 THE ACCESSORISING
 THE LIBERTY DRIVER



Note: Liberty 2.5i Sports Premium shown
 Sedan: Front bumper skirt, mesh sports grille and side under skirt
 Wagon: Rear bumper skirt and side under skirt



Rear roof spoiler - wagon only



Mudflap



Luggage pod - sedan¹



Roof cross bars - wagon



Rear parking sensors



Towbar



Carpet floor mat



Rubber floor mat

1. Roof cross bars required.

ON THE ROAD TO TOMORROW



The maker of Subaru vehicles, Fuji Heavy Industries (FHI), understands the importance of environmental responsibility in all its business activities and services. And in keeping with its goal of being “an intelligent company that is friendly to the global environment” it’s constantly looking for ways to be more environmentally considerate – even in ways that reach beyond the automotive manufacturing sector of its business.

FHI has bettered its carbon dioxide emission reduction targets, thanks to their commitment to energy conserving programs at their factories and other facilities, including the introduction of natural gas-fuelled cogeneration facilities. It also strives to reduce CO₂ emissions in its non-automotive areas, producing fuel-efficient general use engines and wind turbine electric power generation systems.

And at the forefront of all this is their environmentally responsible manufacturing of Subaru vehicles, right across the world. For instance in North America, Subaru was the first automotive manufacturer to receive the stringent ISO 14001 environmental management standard. As well as being the first to achieve zero landfill status.

Since then, Subaru has achieved ISO 14001 accreditation across its entire Japanese business, and continues to find new ways to minimise its impact on the world we all call home.

(Source: Fuji Heavy Industries 2007 Social and Environmental Report)

SUBARU SERVICES

For more information about the Subaru Services listed below visit subaru.com.au

SUBARU FINANCE

Subaru Finance allows you to explore a range of tailored finance options through your authorised Subaru Retailer – so that approved customers can finalise purchase details quickly and conveniently. As dedicated automotive finance specialists, we can offer a range of private and business packages, including vehicle loans, leasing and commercial hire purchase finance.

SUBARU INSURANCE

We understand that you, as a Subaru owner, want a range of insurance options that offers features and benefits that complement your Subaru vehicle. Subaru Insurance options include:

- Subaru Comprehensive Motor Vehicle Insurance
- Subaru Motor Equity Insurance
- Subaru Loan Protection Insurance

These Subaru Insurance products are available only through participating authorised Subaru Retailers.

SUBARU SME LEASING SOLUTIONS

Tailored specifically for small to medium businesses, Subaru SME Leasing Solutions allows your business to explore a range of operating lease solutions through your authorised Subaru Retailer, so that approved customers can enjoy the benefits a true fleet management company can provide. Subaru SME Leasing Solutions offers a range of business packages, including operating leasing and a full range of fleet management services.

SUBARU PREFERRED COLLISION REPAIRER NETWORK

Subaru has appointed a network of Preferred Collision Repairers, with stringent quality standards and high customer service levels. Our dedicated helpline is available on 1800 737 179, 24-hours a day, seven days a week.

SUBARU SERVICE AND SUBARU GENUINE CARE

Inherent within every Subaru is a philosophy of engineering excellence, award-winning performance and advanced driving technology. Subaru Genuine Care delivers the technical expertise, specialist diagnostic equipment and genuine replacement parts required to keep your Subaru in optimum condition. There is also the advantage of knowing your vehicle is maintained by factory-trained technicians with unequalled knowledge of Subaru products.

SUBARU LIFESTYLE

The philosophy of building motor vehicles that perform to the highest standards extends to our range of quality merchandise. With a diverse collection of stylish apparel and accessories, there is something to appeal to every Subaru enthusiast. To see the entire Subaru merchandise range, visit shop.subaru.com.au, or ask your local authorised Subaru Retailer.

SUBARU ROADSIDE ASSIST

In the unlikely event your Subaru breaks down or experiences technical problems, Subaru Roadside Assist is available 24-hours a day, seven days a week to help customers at a competitive annual fee starting from \$71.50*. For more information on Roadside Assist, ask your local authorised Subaru Retailer.

*Prices subject to change without notice.

SUBARU ASSURED WARRANTY PROGRAM FOR USED VEHICLES

Qualifying used Subaru vehicles from participating Subaru Assured Retailers offer a two-year unlimited kilometre warranty extension to further complement either the balance of a new vehicle or the statutory warranty that remains. Every used Subaru Assured vehicle must pass a 116-point inspection.

LIBERTY AWARDS

- 2009 • Australia's Best Cars, Prestige Car, Liberty 3.6R Premium
 - Australasian New Car Assessment Program (ANCAP) five-star occupant safety rating for the entire Liberty range
- 2008 • International Engine of the Year Award, 2.0 - 2.5-litre class, (2.5-litre turbocharged horizontally opposed Boxer engine)
- 2006 • International Engine of the Year Award, 2.0 - 2.5-litre class, (2.5-litre turbocharged horizontally opposed Boxer engine)
- 2005 • Australia's Best Cars, Best Luxury Car under \$57,000, Subaru Liberty 3.0R
- 2004 • Australia's Best Cars, Best Mid-Size Car over \$28,000, Subaru Liberty 2.5i
- 2001 • Australia's Best Cars, Best Mid-Size Car over \$25,000, Subaru Liberty RX
- 2000 • Australia's Best Cars, Best Mid-Size Car over \$25,000, Subaru Liberty RX
 - Which Car, Gold Medal, Medium Car Category, Subaru Liberty
 - Autocar, New Zealand, Car of the Year, Subaru Liberty
 - Autocar, New Zealand, Best Medium Car, Subaru Liberty
 - J.D. Power and Associates/Top Gear U.K. Customer Satisfaction Study, Gold Award – Subaru Liberty
- 1999 • NRMA/RACV, Best Mid-Size Car – Subaru Liberty RX
- 1998 • Wheels Magazine, Wheels Car of the Year – Subaru Liberty Wagon
- 1994 • Wheels Magazine, Car of the Year – Subaru Liberty

subaru.com.au

Subaru (Aust) Pty Limited ABN 95 000 312 792 (Subaru Australia)
Level 3, 4 Burbank Place, Baulkham Hills NSW 2153. Toll Free: 1800 226 643
Subaru Australia reserves the right to vary vehicle specifications and standard features in Australia from those detailed in this brochure.
Vehicles shown in this brochure may be fitted with accessories available at additional cost.
No part of the brochure can be reproduced without written permission from Subaru Australia. Printed in Australia.
© Copyright 2010 – Subaru (Aust) Pty Limited. All rights reserved.

ALL 4
THE STYLE
THE GRIP
THE THRILL
THE SMILE
THE LIBERTY DRIVER



LIBERTY | 2011

ALL 4 THE DRIVER™



SUBARU

MY11 LIBERTY SEDAN AND WAGON SPECIFICATIONS¹

MODEL		2.5i	2.5i Premium	2.5i Premium Satellite Navigation	2.5i Sports	2.5i Sports Premium	2.5i Sports Premium Satellite Navigation	2.5 GT Premium Satellite Navigation	3.6R Premium Satellite Navigation	
		Sedan/Wagon	Sedan/Wagon	Sedan/Wagon	Sedan/Wagon	Sedan/Wagon	Sedan/Wagon	Sedan/Wagon	Sedan	
TRANSMISSION										
6-speed manual transmission		•						•		
Lineartronic™ CVT		•		•	•					
5-speed automatic transmission with manual mode								•	•	
ENGINE										
Engine type		Horizontally-opposed Boxer 4-cylinder, petrol engine						Turbocharged horizontally-opposed Boxer 4-cylinder, petrol engine	Horizontally-opposed Boxer 6-cylinder, petrol engine	
Valve mechanism		SOHC with i-AVLS								
Bore x stroke	mm	99.5 x 79.0								
Capacity	cc	2457								
Compression ratio		10						8.4		
Fuel tank capacity	litres	65								
Fuel system		Multi point sequential injection								
Fuel requirement	RON	90-95						95		90-95
PERFORMANCE²										
Maximum power output (DIN)	kW/rpm	123kW@5600rpm						195kW@5600rpm		191kW@5600rpm
Maximum torque (DIN)	Nm/rpm	229Nm@4000rpm						350Nm@2400-5200		350Nm@4400rpm
Acceleration 0 - 100 km/h	seconds	9.5 (MT) / 10.1 (CVT)			10.1 (CVT)			6.3 (MT) 6.2 (AT)		7.3 (AT)
Electronic Throttle Control system (ETC)		Drive-by-wire								
Fuel consumption (ADR81/02) ³ - combined	l/100km	8.9 (MT) / 8.3 (CVT)			8.3			9.8 (MT) / 9.7 (AT)		10.3
- urban	l/100km	12 (MT) / 11.2 (CVT)			11.2			13.1 (MT) / 13.4 (AT)		14.7
- extra urban	l/100km	7.1 (MT) / 6.6 (CVT)			6.6			7.8 (MT) / 7.5 (AT)		7.6
CO ₂ emissions (ADR81/02) combined	(g/km)	209 (MT) / 193 (CVT)			193			230 (MT) / 228 (AT)		242
Emission standards		EURO4 (MT) / EURO5 (CVT)						EURO4		
SYMMETRICAL ALL-WHEEL DRIVE										
Type	Manual	Centre Differential with a Viscous Limited Slip Differential			n/a			Centre Differential with a Viscous Limited Slip Differential		n/a
Type	Auto				Active Torque Split			Variable Torque Distribution		
TRANSMISSION										
Gear ratio	1st	3.454 (MT) / 3.525 (CVT)			3.525			3.454 (MT) / 3.540 (AT)		3.540
	2nd	1.947 (MT) / Continuously variable (CVT)			Continuously variable			1.947 (MT) / 2.264 (AT)		2.264
	3rd	1.296 (MT) / Continuously variable (CVT)			Continuously variable			1.296 (MT) / 1.471 (AT)		1.471
	4th	0.972 (MT) / Continuously variable (CVT)			Continuously variable			0.972 (MT) / 1.000 (AT)		1.000
	5th	0.825 (MT) / Continuously variable (CVT)			Continuously variable			0.78 (MT) / 0.834 (AT)		0.834
	6th	0.695 (MT) / 0.558 (CVT)			0.558			0.666 (MT)		n/a
Gear ratio - reverse		3.636 (MT) / 2.358 (CVT)			2.358			3.636 (MT) / 2.370 (AT)		2.370
Final reduction gear ratio		4.111 (MT) / 3.7 (CVT)			3.7			4.111 (MT) / 3.083 (AT)		3.083
STEERING										
Steering		Engine speed sensitive power assisted rack and pinion								
Minimum turning circle (kerb to kerb)	m	11								
SUSPENSION										
Type	Front	McPherson strut type, independent suspension			McPherson strut type, independent suspension with Bilstein shock absorber			McPherson strut type, independent suspension		
	Rear	Double wishbone type, independent suspension			Double wishbone type, independent suspension with Bilstein shock absorber			Double wishbone type, independent suspension		
BRAKES										
Type	Front	Ventilated disc brake								
	Rear	Solid disc brake						Ventilated disc brake		
Brake booster type	mm	Tandem								
ABS		4-channel, 4-sensor ABS with Electronic Brakeforce Distribution								
WHEELS AND TYRES										
Tyre manufacturer		Yokohama				Bridgestone				
Tyres (width, profile, size, load index and speed rating)		215/50 R17 91V				225/45 R18 91W			225/50 R17 94W	
Rim size		17x7.5JJ				18x7.5JJ			17x7.5JJ	
Wheels		17"				18"			17"	
Spare wheel		205/50 R17 89V "Temporary steel wheel"								
MEASUREMENT										
Overall length	mm	Sedan - 4745 / Wagon - 4785								
Overall width	mm	1780								
Overall height	mm	Sedan - 1505 / Wagon - 1535								
Wheel base	mm	2750								
Front track	mm	1530								
Rear track	mm	1535								
Minimum ground clearance ⁴	mm	150								
Cargo volume - rear seat up/down	litres	Sedan - 476 / - Wagon - 490 / 1690								
Tare mass	kg	Sedan - 1398 (MT) / 1432 (CVT)	Sedan - 1449	Sedan - 1451	Sedan - 1442	Sedan - 1465	Sedan - 1478	Sedan - 1500 (MT) / 1535 (AT)		1549
		Wagon - 1440 (MT) / 1474 (CVT)	Wagon - 1491	Wagon - 1493	Wagon - 1485	Wagon - 1507	Wagon - 1520	Wagon - 1542 (MT) / 1577 (AT)		
TOWING										
With trailer brakes/without trailer brakes	kg	1500/720						1800/750		1800/750
Maximum tow ball down load	kg	150						180		180

1. Subaru Australia reserves the right to change mechanical specification and equipment levels without notice. 2. All performance data measured using 95RON as required by Australian Design Rule 81/02. Vehicles tested in accordance with ADR 81/02. 3. Fuel consumption figures calculated in accordance with Australian Design Rules 81/02. 4. Ground clearance at kerb weight.

MY11 LIBERTY SEDAN AND WAGON STANDARD FEATURES¹

MODEL	2.5i	2.5i Premium	2.5i Premium Sat Nav	2.5i Sports	2.5i Sports Premium	2.5i Sports Premium Sat Nav	2.5 GT Premium Sat Nav	3.6R Premium Sat Nav
TRANSMISSION	Manual Automatic	6-speed					6-speed 5-speed	Sedan only 5-speed
Lineartronic™ CVT								
SAFETY RATING								
ANCAP ² occupant safety rating (max. 5)	5-star	5-star	5-star	5-star	5-star	5-star	5-star	5-star
COLLISION AVOIDANCE								
Symmetrical All-Wheel Drive (SAWD)	•	•	•	•	•	•	•	•
Vehicle Dynamics Control system (VDC)	•	•	•	•	•	•	•	•
Anti-lock Braking System (ABS)	•	•	•	•	•	•	•	•
4-wheel disc brakes	•	•	•	•	•	•	•	•
Electronic Brakeforce Distribution (EBD)	•	•	•	•	•	•	•	•
Brake Assist	•	•	•	•	•	•	•	•
Electronic Throttle Control system (ETC)	•	•	•	•	•	•	•	•
Electronic parking brake with hill hold switch	•	•	•	•	•	•	•	•
Rear view reverse camera	•	•	•	•	•	•	•	•
Bilstein sports suspension	•	•	•	•	•	•	•	•
COLLISION PROTECTION								
SRS ³ airbags - dual front, dual front side & curtain	•	•	•	•	•	•	•	•
SRS ³ airbags - knee airbag (driver only)	•	•	•	•	•	•	•	•
Front seatbelts with pretensioners & load limiters	•	•	•	•	•	•	•	•
3 point A/ELR rear seatbelts	•	•	•	•	•	•	•	•
Height adjust seatbelt anchors-driver & front passenger	•	•	•	•	•	•	•	•
Seat belt warning lights - all seats	•	•	•	•	•	•	•	•
Rear seat headrests for 3 seating positions	•	•	•	•	•	•	•	•
Height adjustable front seat headrests	•	•	•	•	•	•	•	•
Height adjustable rear seat headrests	•	•	•	•	•	•	•	•
Safety pedals - brake, clutch/footrest (A/T)	•	•	•	•	•	•	•	•
Ring shaped passenger safety cell	•	•	•	•	•	•	•	•
CHILD SAFETY								
Child seat anchor points (x3)	•	•	•	•	•	•	•	•
Rear door child locks	•	•	•	•	•	•	•	•
EXTERIOR								
Body coloured mirrors and door handles	•	•	•	•	•	•	•	•
Bonnet scoop	•	•	•	•	•	•	•	•
Bonnet with gas struts	•	•	•	•	•	•	•	•
Chrome coloured window sills	•	•	•	•	•	•	•	•
Detachable module type windscreen wipers	•	•	•	•	•	•	•	•
Door mirrors with indicators	•	•	•	•	•	•	•	•
Dual tail pipe	•	•	•	•	•	•	•	•
Electric sunroof	•	•	•	•	•	•	•	•
Engine cover	•	•	•	•	•	•	•	•
Rear door, rear quarter & rear windscreen	Privacy Glass	Privacy Glass	Privacy Glass	Privacy Glass	Privacy Glass	Privacy Glass	Privacy Glass	Privacy Glass
Rear spoiler (wagon only)	•	•	•	•	•	•	•	•
Rear window wiper (wagon only)	•	•	•	•	•	•	•	•
Roof rack brackets (wagon only)	•	•	•	•	•	•	•	•
Side spoiler	•	•	•	•	•	•	•	•
Sports body kit	•	•	•	•	•	•	•	•
Tail pipe covers	•	•	•	•	•	•	•	•
Temporary full size spare wheel (steel)	•	•	•	•	•	•	•	•
17" alloy wheels	•	•	•	•	•	•	•	•
18" alloy wheels	•	•	•	•	•	•	•	•
LIGHTING - EXTERIOR								
Front fog lights	•	•	•	•	•	•	•	•
Headlights - halogen with auto off	•	•	•	•	•	•	•	•
Headlights - dusk sensing	•	•	•	•	•	•	•	•
Headlights - self levelling Xenon low beam - auto off	•	•	•	•	•	•	•	•
Rear bumper reflectors and LED stoplight	•	•	•	•	•	•	•	•
LIGHTING - INTERIOR								
Blue interior illumination	•	•	•	•	•	•	•	•
Cabin and cargo area lights	•	•	•	•	•	•	•	•
Illuminated ignition ring	•	•	•	•	•	•	•	•
Map lights (x2)	•	•	•	•	•	•	•	•
AIR-CONDITIONING								
Dual zone climate control	•	•	•	•	•	•	•	•
Dual zone climate control with rear vents	•	•	•	•	•	•	•	•
Anti-dust filters	•	•	•	•	•	•	•	•
Front and side demisters	•	•	•	•	•	•	•	•
Heater ducts for rear passengers	•	•	•	•	•	•	•	•
Rear windscreen demister - electric with timer	•	•	•	•	•	•	•	•
SECURITY								
DataDot security system	•	•	•	•	•	•	•	•
Immobiliser security system	•	•	•	•	•	•	•	•
Vehicle pre-wired for alarm system installation	•	•	•	•	•	•	•	•

MODEL	2.5i	2.5i Premium	2.5i Premium Sat Nav	2.5i Sports	2.5i Sports Premium	2.5i Sports Premium Sat Nav	2.5 GT Premium Sat Nav	3.6R Premium Sat Nav
TRANSMISSION	Manual Automatic	6-speed					6-speed 5-speed	Sedan only 5-speed
Lineartronic™ CVT								
INSTRUMENTATION AND CONTROLS								
Adjustable steering wheel - height & telescopic	•	•	•	•	•	•	•	•
Automatic transmission with manual mode	•	•	•	•	•	•	•	•
Instrument cluster ⁴	•	•	•	•	•	•	•	•
Multi-information display ⁵	•	•	•	•	•	•	•	•
Paddle gear shift on steering column	CVT	•	•	•	•	•	Auto	•
Subaru Intelligent Drive (SI-DRIVE)	•	•	•	•	•	•	•	•
Sports pedals	•	•	•	•	•	•	•	•
Steering wheel audio and cruise controls	•	•	•	•	•	•	•	•
Steering wheel <i>Bluetooth</i> [®] controls	•	•	•	•	•	•	•	•
Twin trip meter (switchable)	•	•	•	•	•	•	•	•
STORAGE								
Cargo luggage hooks	•	•	•	•	•	•	•	•
Centre console box	•	•	•	•	•	•	•	•
Cupholders - centre console with lid	•	•	•	•	•	•	•	•
Cupholders - rear	•	•	•	•	•	•	•	•
Door pockets with integrated bottle holder - front/rear	•	•	•	•	•	•	•	•
Front centre tray	•	•	•	•	•	•	•	•
In dash console box	•	•	•	•	•	•	•	•
Overhead console - sunglass holder	•	•	•	•	•	•	•	•
Pull-out cargo area tie down points (wagon only)	•	•	•	•	•	•	•	•
Retractable cargo security blind (wagon only)	•	•	•	•	•	•	•	•
Seat back nets - driver & front passenger	•	•	•	•	•	•	•	•
Tool kit	•	•	•	•	•	•	•	•
CONVENIENCE								
12v/120W power jacks (x2)	•	•	•	•	•	•	•	•
Boot/tailgate auto unlock remote central locking keys	•	•	•	•	•	•	•	•
Illuminated front sunvisor, vanity mirrors	•	•	•	•	•	•	•	•
Interior fuel lid lock release	•	•	•	•	•	•	•	•
Intermittent variable speed front windscreen wipers	•	•	•	•	•	•	•	•
Rain sensing front windscreen wipers	•	•	•	•	•	•	•	•
Power mirrors and windows	•	•	•	•	•	•	•	•
Power steering	•	•	•	•	•	•	•	•
Rear seat centre armrest (wagon only)	•	•	•	•	•	•	•	•
Rear seat centre armrest boot access (sedan only)	•	•	•	•	•	•	•	•
Remote central locking	•	•	•	•	•	•	•	•
Remote central locking keys (x2)	•	•	•	•	•	•	•	•
Smart key and push-start ignition	•	•	•	•	•	•	•	•
INTERIOR TRIMS								
Cargo area carpet wagon - black	•	•	•	•	•	•	•	•
Gear shift	Leather (MT) Matt Silver (AT)	Matt Silver	Matt Silver	Matt Silver	Matt Silver	Matt Silver	Leather (MT) Matt Silver (AT)	Matt Silver
Leather steering wheel	•	•	•	•	•	•	•	•
Seat trim - cloth	•	•	•	•	•	•	•	•
Seat trim - leather ⁷ - perforated seat inserts	•	•	•	•	•	•	•	•
Seat trim colour - black	•	•	•	•	•	•	•	•
Seat trim colour - ivory	•	•	•	•	•	•	•	•
SEATING EXTRAS								
60/40 split folding rear seats (wagon only)	•	•	•	•	•	•	•	•
8-way power seat with dual memory - driver	•	•	•	•	•	•	•	•
8-way power seat - front passenger	•	•	•	•	•	•	•	•
Electric lumbar support - driver	•	•	•	•	•	•	•	•
Manual seat height lifter - driver	•	•	•	•	•	•	•	•
One touch lever folding rear seats (wagon only)	•	•	•	•	•	•	•	•
Reclining rear seat (wagon only)	•	•	•	•	•	•	•	•
ENTERTAINMENT								
AM/FM Radio, 6-stack in-dash CD player (MP3 & WMA compatible), 6 speaker SRS ⁸ stereo system	•	•	•	•	•	•	•	•
Auxiliary jack ⁹ - front centre console	•	•	•	•	•	•	•	•
McIntosh entertainment system, built in multi-information in-dash sat nav system & single CD/DVD ¹⁰ player (8" touch screen) 10 speakers	•	•	•	•	•	•	•	•
Multi-information in-dash sat nav system & single CD/DVD ¹⁰ player (8" touch screen) with 6 speakers	•	•	•	•	•	•	•	•
RCA jacks ¹¹ (factory fitted satellite navigation)	•	•	•	•	•	•	•	•
<i>Bluetooth</i> [®] wireless technology ⁶	•	•	•	•	•	•	•	•
WARRANTY								
Three-year unlimited km warranty	•	•	•	•	•	•	•	•

1. Subaru Australia reserves the right to change mechanical specification and equipment levels without notice. 2. The Australasian New Car Assessment Program (ANCAP) gives consumers consistent information on the level of occupant protection provided by vehicles in serious front and side crashes. 3. SRS: Supplemental Restraint System. Effective when used in conjunction with seatbelts. 4. Instrument cluster includes speedometer, tachometer, trip computer, fuel gauge, AT select indicator (automatic models only), cruise control indicator, high beam indicator and front fog light indicator. 5. Multi-information display - includes fuel economy, temperature and clock. 6. *Bluetooth*[®] is a registered trademark of Bluetooth SIG Inc. System operation ability is subject to the *Bluetooth*[®] wireless technology specification of individual's phone. 7. Some parts of the seating are not full natural leather. 8. SRS Circle Surround Automotive is a trademark of SRS Labs. Inc. 9. Auxiliary jack not available if satellite navigation is fitted. 10. DVD only operates when vehicle is stationary. 11. RCA jacks replace auxiliary jack when satellite navigation is fitted.

LIBERTY AWARDS

- 2009 • Australia's Best Cars, Prestige Car, Liberty 3.6R Premium
 - Australasian New Car Assessment Program (ANCAP) five-star occupant safety rating for the entire Liberty range
- 2008 • International Engine of the Year Award, 2.0 - 2.5-litre class, (2.5-litre turbocharged horizontally opposed Boxer engine)
- 2006 • International Engine of the Year Award, 2.0 - 2.5-litre class, (2.5-litre turbocharged horizontally opposed Boxer engine)
- 2005 • Australia's Best Cars, Best Luxury Car under \$57,000, Subaru Liberty 3.0R
- 2004 • Australia's Best Cars, Best Mid-Size Car over \$28,000, Subaru Liberty 2.5i
- 2001 • Australia's Best Cars, Best Mid-Size Car over \$25,000, Subaru Liberty RX
- 2000 • Australia's Best Cars, Best Mid-Size Car over \$25,000, Subaru Liberty RX
 - Which Car, Gold Medal, Medium Car Category, Subaru Liberty
 - Autocar, New Zealand, Car of the Year, Subaru Liberty
 - Autocar, New Zealand, Best Medium Car, Subaru Liberty
 - J.D. Power and Associates/Top Gear U.K. Customer Satisfaction Study, Gold Award – Subaru Liberty
- 1999 • NRMA/RACV, Best Mid-Size Car – Subaru Liberty RX
- 1998 • Wheels Magazine, Wheels Car of the Year – Subaru Liberty Wagon
- 1994 • Wheels Magazine, Car of the Year – Subaru Liberty

subaru.com.au

Subaru (Aust) Pty Limited ABN 95 000 312 792 (Subaru Australia)
Level 3, 4 Burbank Place, Baulkham Hills NSW 2153. Toll Free: 1800 226 643
Subaru Australia reserves the right to vary vehicle specifications and standard features in Australia from those detailed in this brochure.
Vehicles shown in this brochure may be fitted with accessories available at additional cost.
No part of the brochure can be reproduced without written permission from Subaru Australia. Printed in Australia.
© Copyright 2010 – Subaru (Aust) Pty Limited. All rights reserved.