

**CIVIC SEDAN**  
SERIES II



**HONDA**  
The Power of Dreams

Honda Australia Pty. Ltd. ACN 004 759 611 ABN 66 004 759 611  
95 Sharps Road, Tullamarine, Victoria, 3043. Freecall 1800 804 954. [honda.com.au/cars](http://honda.com.au/cars)

The specifications and major features listed herein are accurate as at the date of printing (July 2012/12YM). However, Honda Australia Pty. Ltd. reserve the right to change or modify specifications and major features at any time without prior notice. Due to ordering, shipping and freight factors, some colour and model availabilities may vary from time to time. Check with your Honda Dealer for current information on availability. Automatic transmission available for an extra cost on Civic Series II VTI. Only Genuine Honda Accessories are made to fit Honda vehicles. The fuel consumption figures quoted in this brochure are based on ADR81/02 test results. You may experience different results depending on driving conditions and the condition of the vehicle. Honda warranties apply where due care is exercised by the owner and the vehicle is maintained in accordance with the vehicle's owners manual. Please refer to Honda's warranty documentation for exclusions and conditions. Honda Australia Pty. Ltd. recommends careful examination of all official Honda warranty documentation before purchasing. This brochure is printed on Revive Pure Silk 100% Recycled is Certified Carbon Neutral and FSC 100% Recycled. The pulp used is Process Chlorine Free and is manufactured by an ISO 14001 certified mill. Civic Series II Sport shown in Carnelian Red on cover.

HON8993



Welcome to symphony in motion



### Driveability

With its short wheelbase and specially-tuned suspension, the Civic's agility makes every drive a joy. Combined with the refinement of reduced noise intrusion, it creates the perfect marriage of smooth and feisty.

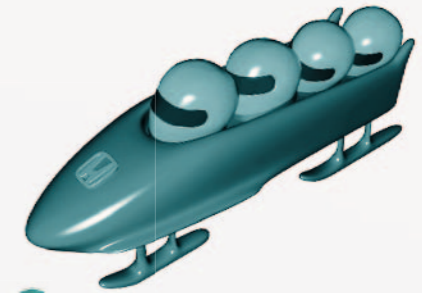
### Refinement

Unlike some other cars that have been designed merely for looks, the Civic has been created to work beautifully. With each piece performing in perfect harmony with every other, it results in a drive that can't be explained, only experienced.



### Safety

The Civic surrounds you and your passengers with an array of advanced active and passive safety features. In fact, it's has been awarded a 5-Star ANCAP safety rating, Australia's highest possible.



### Aerodynamic design

The Civic's sleek 'one-motion' design provides more than sophisticated good looks. It's also responsible for a smoother, more stable ride and increased fuel efficiency.



### Fuel efficiency

The Civic helps you save fuel three ways. Firstly, the 1.8, 2.0 litre and hybrid engines increase fuel efficiency. Then there's Eco Assist, which coaches you to drive more frugally. Finally, ECON mode adjusts the Civic's systems, preserving power and petrol.

### Smart interface

The Civic's Dual Zone dash puts the most important information comfortably in your line of sight, so you can keep your attention on the road. And the intelligent-Multi Information Display (i-MID) delivers a wealth of data while allowing you to add a personal touch to your Civic.





Civic Series II Sport shown in Urban Titanium.



Civic Series II Sport shown in Urban Titanium.

## A favourite made even more fantastic

Let's face it: these days, all cars work. And some of them are beautiful. However, the Honda Civic is a rarity—a car that works beautifully, with each of its parts performing together to create a drive that's noticeably a notch above.

Of course, that's not to say the Civic is anything but beautiful to behold. Its exterior is all sweeping lines and understated confidence. (In fact, it's a sedan with more than a little coupe in its DNA.)

All this refinement and attention to detail is echoed in the Civic's cabin, which is not only incredibly comfortable, but hosts some very clever touches too, like the intelligent-Multi Information Display (i-MID) that gives audio and trip computer details, displays integrated Bluetooth® information\* and even lets you add your own pictorial personalisation.

Where the Civic really shines though is in its ride. A short wheelbase and specially tuned suspension make for outstanding manoeuvrability and agility (which roughly translates as: FUN.)

There's also a choice between a 1.8 litre, 2.0 litre or hybrid i-VTEC engine, each of which provide a beautiful blend of power and economy.

And you'll also enjoy the ride with absolute confidence, knowing that you're protected with a set of safety measures that have earned the Civic a 5-Star ANCAP safety rating.

So take a drive in the Civic and you're sure to rate it highly, too.

\*The Bluetooth word mark is owned by the Bluetooth SIG, Inc. and use of such mark by Honda is under licence. Please check the list of compatible phones at [honda.com.au/bluetooth](http://honda.com.au/bluetooth)



Civic Series II VTI-L shown in Urban Titanium and Civic Series II Sport shown in Crystal Black.

## Stylish sweeping lines



There's an understated confidence to the Civic's blend of classic style and contemporary design. Perhaps that's because it comes with more than a touch of technical nous, too.

The benefits of this eye catching combination are immediately obvious with a brief glance at the Civic's curvy body. Its distinctive character lines, chrome grille, lean pillars, restyled wing mirrors and sleek headlights are the first features to set the heart racing.

But it's once you're behind the wheel that its hidden beauty becomes apparent. Because that's where you'll appreciate the way its streamlined shape optimises airflow to create an incredibly smooth and stable ride.

And its sweeping roofline, sleek windshield rake, and low, wide stance combine to provide its sporty athleticism.

With such a striking mixture of style and science, the Civic brings a clever sense of refinement to the road, that's positively picturesque, too.





Civic Series II Sport shown.

## Comfortable with its beauty

As attractive as it is, you're going to spend infinitely more time inside your Civic looking out than you will outside looking in. A fact not lost on Honda's design team, who slaved over even the tiniest detail in the Civic's interior to create an incredibly comfortable cockpit.

For starters, they looked at creating an interior space that somehow seems larger inside than out. Sounds tricky, but

thanks to superior design principles, the Civic is splendidly spacious, with ample room for legs, shoulders and even feet. So now a road trip for five grown-ups is no reason to groan.

The driver and front passenger seats are fully reclining and the driver's seat is height adjustable. (And with fabric trim in the VTi, VTi-L, VTi-LN and Hybrid and elegant plush leather<sup>1</sup> in the Sport, the seats are as stylish as they are supportive.)

You'll enjoy the scenery as much as the drive itself with superior all-round visibility for driver and passengers.

But while you'll see more, you'll also hear less. That's thanks to the Civic's body rigidity, cushioned suspension and lightweight sound-absorption materials in the roof, carpets and dashboard. Which means a quieter, smoother, more peaceful drive for you.

So finding anywhere more comfortable than the inside of a Civic is an outside chance, indeed.

<sup>1</sup>Leather includes some PVC vinyl material.



1.

### Steering wheel controls

Thanks to their intuitive design, these controls offer effortless access to the i-MID, as well as audio and cruise controls. So in the Civic, everything you need is always within easy reach.



2.

### Bluetooth® audio

Make and answer calls without taking your hands from the wheel thanks to integrated Bluetooth® technology.\* You can also stream music wirelessly from any compatible mobile phone or media device and choose tracks from the steering wheel-mounted controls.



3.

### Stereo

The Civic's integrated audio system includes radio, MP3/WMA compatible CD player, USB, AUX and Bluetooth® technology.† And there's the convenience of Speed-Sensitive Volume Control (SVC).



9.

### Rain-sensing wipers

As their name suggests, these intelligent front wipers activate the moment the windscreen detects moisture and they automatically adjust their speed as needed. (VTi-LN, Sport and Hybrid models.)



8.

### Electric sunroof

For those days when you want to enjoy a little more sunshine or breeze, the Civic Sport is equipped with a one-touch electric tilt/slide sunroof with blind.

## Take a thoroughly thoughtful drive

When you're behind the wheel there's only one place your attention should be, and that's on the road. So every time you have to search for a switch or bumble for a button, it taxes your concentration. The Civic abolishes this problem with a cockpit

that smartly surrounds the driver so every control is at your fingertips. And while others may call it ergonomics, Honda simply calls it good design.



Civic Series II Sport shown.



4.

### USB connectivity

Connecting your iPod# or other compatible MP3 device\*\* is simple in the Civic. Browse and select tunes using the dash or steering wheel-mounted controls and, if it's available, information such as song title, artist and even album art will appear on the Civic's i-MID screen.



5.

### Auto climate control

Simply set the desired cabin temperature and the Civic adjusts accordingly, keeping you perfectly comfortable. (Not applicable to VTi model.)



7.

### Smart entry

In the VTi-LN and Sport models you need never fumble for your keys again. The smart keyless entry system senses your keys on approach and unlocks the doors at your touch. Then just press the brake pedal and the Civic will come to life at the simple push of the start button.

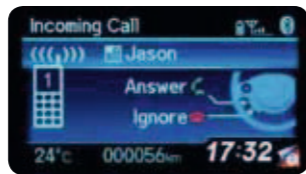


6.

### 60:40 split fold seats

The Civic's huge boot holds up to 440 litres but the 60:40 split fold rear seats allow you to fit more in while still leaving plenty of room for rear passengers. You can also fold down both seat backs for even greater cargo space. (Not applicable to Hybrid model.)

\*The Bluetooth word mark is owned by the Bluetooth SIG, Inc. and use of such mark by Honda is under licence. Please check the list of compatible phones at [honda.com.au/bluetooth](http://honda.com.au/bluetooth)  
#iPod is a trademark of Apple Inc. iPod is integrated through audio display for iPod Nano and iPods from 5th Generation onwards. Older iPod models will only operate through the audio system and firmware updates may be required for audio display compatibility. Please refer to your iPod User Guide for information on iPod firmware updates. †Not all devices are compatible and functionality will vary depending on the device.



Civic Series II Sport shown.

## i-MID

How do you decide the best position to display driving data? If you're Honda, that's easy. You just analyse drivers' eye movements and then devise a two-tier instrument panel that shortens the visual distance between the most commonly referenced gauges and the road.

Sitting at its heart lies the highly intuitive full-colour intelligent-Multi Information Display (i-MID for short). This displays every important tidbit of driving-related information, such as fuel economy indicators, vehicle

warnings and trip statistics as well as audio and Bluetooth® displays.\*

And with simple-to-use steering wheel-mounted controls, it's all right at your fingertips.

## Satellite Navigation system

The Civic VTi-LN and Sport models also come with a Satellite Navigation system to help guide you virtually anywhere in Australia via the shortest or fastest route. A user-friendly interface means it's easy to find over a million landmarks and locations including restaurants, car parks, petrol stations and sports centres. And thanks to real-time SUNA\* traffic integration, you'll be able to avoid congestion from road works and accidents.

It's versatile, too, because it doubles as a touch-screen control unit for radio, CD, DVD† USB and Bluetooth® phone and audio streaming\* And when reversing, it acts as a rear-view monitor, so you can avoid the curb in even the cosiest of car spaces.

Now that's a touch of genius.

\*The Bluetooth word mark is owned by the Bluetooth SIG, Inc. and use of such mark by Honda is under licence. Please check the list of compatible phones at [honda.com.au/bluetooth](http://honda.com.au/bluetooth) †DVD player operates only while vehicle is stationary. \*SUNA is a registered trademark of Intelematics Pty. Ltd. Coverage includes Melbourne, Sydney, Brisbane, Gold Coast, Adelaide, Perth and Canberra metropolitan areas. Refer to [www.sunatrafic.com.au](http://www.sunatrafic.com.au) for full details.





Civic Series II VTI-L shown in Taffeta White.

## A dazzlingly efficient duo

When it comes to using less, the Civic performs a very smart double act.

### ECON mode

A simple push of a button activates ECON mode, helping maximise fuel efficiency by adjusting the Civic's engine, transmission, heating and cooling system, and cruise control. An indicator will appear on the instrument panel to let you know ECON mode is on the go.



### Eco Assist

The Civic comes with Eco Assist, a coaching system which changes the colour of your speedometer to help you drive more fuel efficiently. When you brake or accelerate sharply, the display glows blue. Drive smoothly and economically and the display will turn an encouraging green.





# A finely tuned performance

As previously noted, every part of the Civic works in perfect harmony—a symphony in motion, if you will. And just like an orchestra, the Civic is only as good as its individual, but interconnected, sections. So let's meet some of them, shall we?

For starters there's the suspension. Combining MacPherson struts at the front and double wishbone suspension at the rear, the Civic offers the best of both worlds: a nimble ride along with exceptional control of noise, vibration and harshness. So it's refined and responsive at the same time.

This feeling of refinement is enhanced by the smooth manoeuvrability provided by its short wheelbase.

Next is the Civic's lightweight Motion Adaptive Electric Power Steering, which adjusts the amount of power assist based on your speed. At lower speeds, it increases steering assistance and then rewards you with a more direct feel at higher speeds.



Now it's time for the virtuoso at the heart of the Civic's bravura performance: the i-VTEC engine. By varying its valves along with your needs, it's a system that brilliantly balances power and efficiency, delivering oomph when required and economy on more sedate stretches.

The SOHC 1.8-litre engine produces 104kW at 6500 rpm and 174Nm of torque at 4300 rpm with low emissions and fantastic fuel economy in the Civic VTi, VTi-L and VTi-LN models. The result is an economy rating of 6.7 litres per 100km in the automatic transmission.

Meanwhile, the Civic Sport's 2.0 litre SOHC i-VTEC engine uses just 7.5 litres per 100km. And that's while delivering a very impressive 114kW at 6500 rpm and 190Nm of torque at 4300 rpm. So in the Civic, fun and frugality are certainly on friendly terms.

Complementing the i-VTEC engines is an equally intelligent 5-speed automatic transmission. Equipped with Grade Logic Control, it senses when the Civic is on an incline and adjusts the shift schedule to eliminate herky-jerky gear 'hunting'.

And to add a little more sport to all this smoothness, the Civic Sport model comes with steering wheel-mounted paddle



shifters in the automatic transmission as standard. There's also a 5-speed manual transmission available on the VTi.

Playing seamlessly together, these are the parts that make the Civic an instrument of pure automotive pleasure.



Typical 'gear hunting' without Grade Logic Control



Optimised gear selection with Grade Logic Control



Shift patterns are examples only.

# Say hi to a hybrid

All too often the word 'efficient' conjures up the image of virtuous vehicles that use very little fuel but also provide very few kicks. This, thankfully, is most definitely not the case with the Civic Hybrid.

This brilliant balancing act is largely due to the Civic Hybrid's sophisticated Integrated Motor Assist (IMA) System, which partners a larger 1.5-litre i-VTEC 4-cylinder petrol engine with a light and powerful electric motor. It's a perfect pairing that delivers power and efficiency equally impressively.



During acceleration, the engine draws on the electric motor for supplementary power. For low-speed cruising, the electric motor takes over and when braking, it replenishes the battery pack so it never needs recharging from an external power supply. Finally, in optimum conditions, the engine automatically switches itself off when idle to keep fuel consumption—and running costs—down to an absolute minimum.

Together, the petrol engine and electric motor team to produce 82kW at 5500 rpm and 172Nm of torque at 1000-3500 rpm. And by increasing power and torque delivery at lower rpms, the Civic Hybrid is a surprisingly sprightly performer during normal city driving and an athletic accelerator on the open road.

To further help the efficiency drive, the Civic Hybrid boasts Honda's brilliant Continuously Variable Transmission (CVT). By always having the right ratio to call on, the CVT offers better fuel economy and acceleration compared to more traditional transmissions. It also creates a smoother ride by eliminating annoying 'gear-hunting'.



Civic Hybrid shown in Alabaster Silver.

Just like all Civic sedans, the Hybrid comes equipped with an ECON button and Eco Assist to help conserve energy and help coach you to drive more efficiently, but the Hybrid model ups the efficiency ante with a useful Eco Guide within its i-MID display.



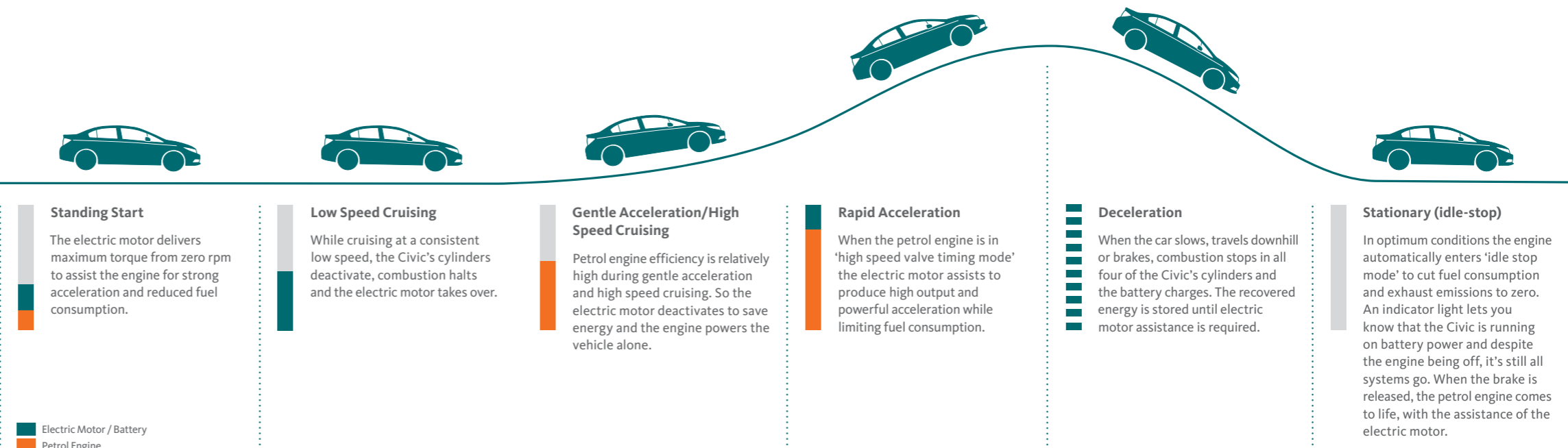
As you drive, a flower icon grows in the display—the more efficiently you drive, the more the flower blooms. You also get a lifetime score to track your petrol-preserving prowess.

The quest for efficiency isn't just an inside job either, because the Civic Hybrid's exterior has been specially designed for brilliant aerodynamics with minimal wind resistance. (As a bonus, this also lends it a sophisticatedly high-tech presence.) This clever thinking extends right down to the light-weight 15" alloy wheels, which are a special low-drag design created exclusively for the Civic Hybrid.

And what do all these features mean? In short, an impressive combined fuel economy rating of just 4.4 litres per 100km.\* End of story.

## Different ways to use energy for different situations

Here's how the IMA system shares the workload between the Civic's petrol engine and electric motor to deliver maximum efficiency at every stage of your journey.



\*The fuel consumption figure is based on ADR81/02 combined test results.

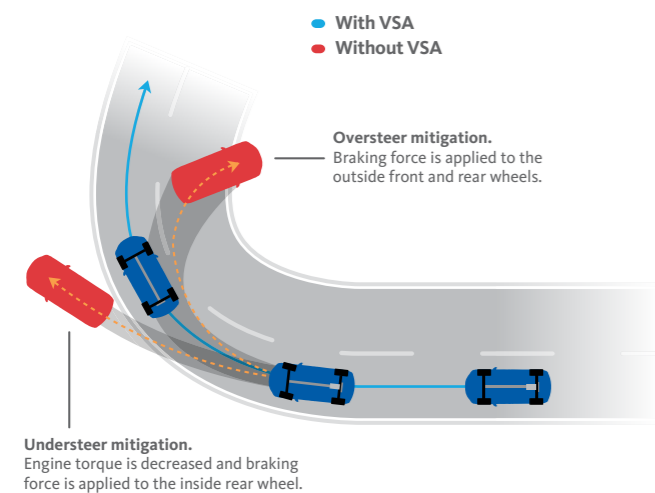
# A five-star safety review

When it comes to the ratings of critics in the automotive arena, there's one that's more important than any other. A 5-Star ANCAP safety rating—the very highest there is—gives you peace-of-mind that you and your passengers are being properly protected. Courtesy of an array of standard safety features, the Civic has been awarded this seal of approval.



## Vehicle Stability Assist

Vehicle Stability Assist (VSA) senses oversteer or understeer in an emergency situation, then adjusts each wheel's brake pressure and reduces engine power to help put you back in control.



## Motion Adaptive Electric Power Steering

When VSA is activated, the Civic's Motion Adaptive Electric Power Steering automatically adjusts steering pressure making it decidedly easier to steer in the stabilising direction.

## ACE body structure

At the Tochigi R&D centre, Honda's engineers crash real cars in alarmingly authentic real-world simulations. These learnings have helped to develop Advanced Compatibility Engineering (ACE), an exclusive body structure that disperses crash energy more evenly throughout the front of the vehicle, transmitting less force to the passenger compartment.

## Anti-lock Braking System (ABS) with Electronic Brake-force Distribution (EBD)

Every Civic comes equipped with an Anti-lock Braking System (ABS) for superb stopping power. When emergency braking is detected, Brake Assist applies maximum braking pressure and Electronic Brake-force Distribution (EBD) monitors and adjusts the brake force applied to each wheel to achieve optimal control and stability.

## Dual front airbags

In the Civic, both driver and passenger are protected by advanced front airbags featuring dual-stage, multiple-threshold technology. In a collision, these airbags inflate at different rates, depending on crash severity, seat-belt usage and a host of other factors. What's more, the front seatbelts are equipped with pre-tensioners and load limiters to help minimise injuries in head-on collisions.

## Dual side airbags

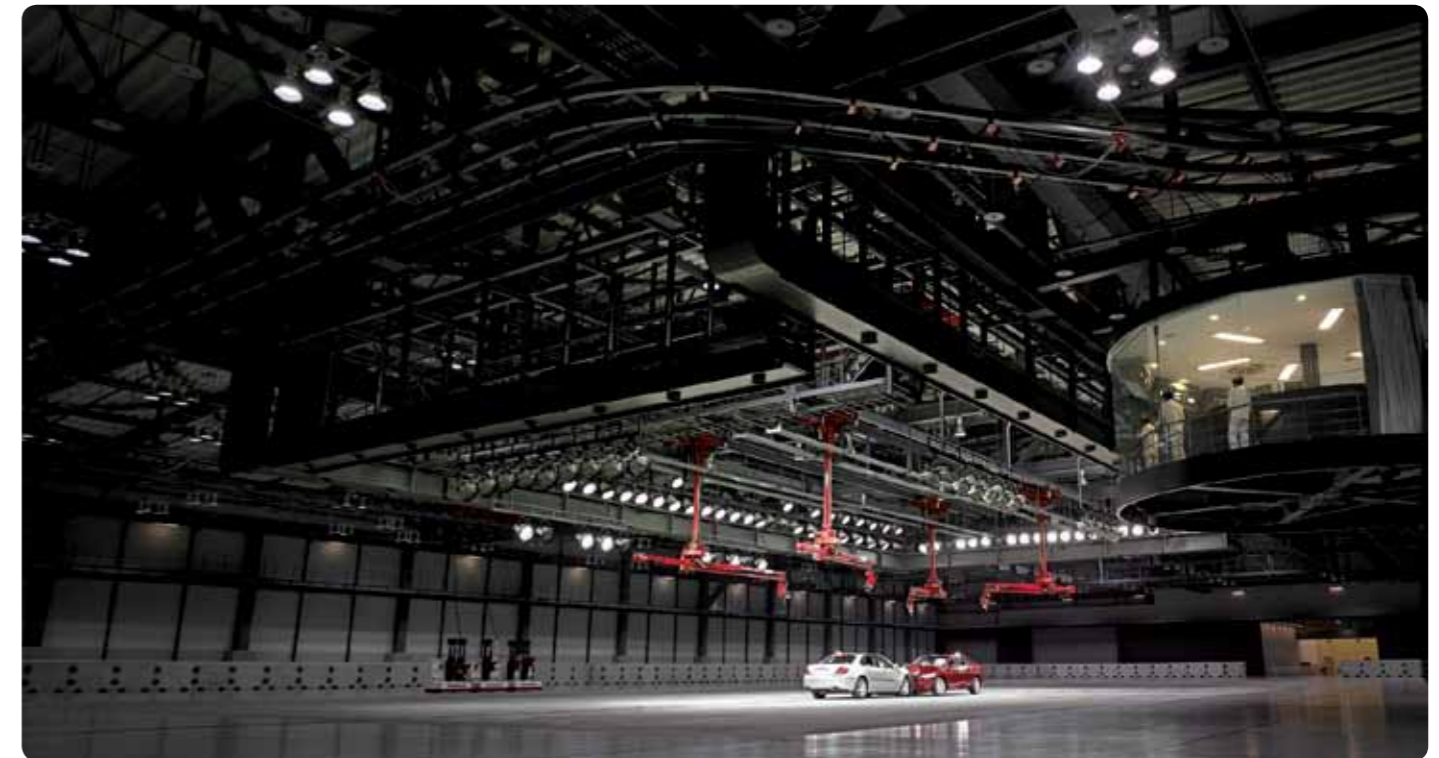
These airbags inflate to help protect the driver or front passenger against side impact. But there's also a clever addition: the Occupant Position Detection System (OPDS) is an innovative technology that deactivates the passenger side airbag if an occupant leans into its deployment path. So it protects in two ways.

## Full-length curtain airbags

Side curtain airbags deploy from modules in the roof in the event of a side impact, protecting passengers' heads in the window area. Like the Civic's other airbag systems, the side curtains have sensors to determine the most appropriate timing of deployment.

## Whiplash mitigation front head restraints

With specific spring range settings in both the seatback and bottom cushions, the Civic's front seats are designed to lessen the severity of neck injuries in case of a rear impact.



## Civic VTi

The Civic VTi comes standard with:

### POWERTRAIN

- 1.8 litre SOHC i-VTEC engine
- 104kW @ 6500rpm and 174Nm @ 4300rpm
- 5-speed manual or optional automatic transmission
- Electric Power Steering (EPS)

### EXTERIOR

- 15-inch steel wheels
- Power door mirrors (body coloured)
- Halogen headlights (auto-off)
- Remote keyless entry with boot release

### INTERIOR

- Eco Assist and ECON mode
- Fabric seat trim
- intelligent-Multi Information Display (i-MID)
- 60/40 split fold rear seats
- Auxiliary jack
- Bluetooth® phone/audio streaming°
- USB connectivity with i-MID integration™
- Steering wheel-mounted controls

### SAFETY

- 5-star ANCAP safety rating
- SRS airbags: dual front, side and full-length curtain
- Advanced Compatibility Engineering (ACE) body structure
- Anti-lock Braking System (ABS)
- Electronic Brake-force Distribution (EBD)
- Motion Adaptive Electric Power Steering
- Vehicle Stability Assist (VSA)
- Whiplash mitigation front head restraints



## Civic VTi-L

Additional features over the VTi:

- 5-speed automatic transmission standard
- 16-inch alloy wheels
- Auto on/off dusk-sensing headlights
- Chrome interior accents
- Climate control air conditioning



## Civic VTi-LN

Additional features over the VTi-L:

- Chrome exterior door handles
- Front fog lights
- Rain sensing automatic front wipers
- Smart keyless entry and push button start
- Satellite navigation system with SUNA Live Traffic Updates\*†
- Reversing camera
- DVD player‡



## Civic Sport

Additional features over the VTi-LN:

- 2.0 litre SOHC i-VTEC engine
- 114kW @ 6500rpm and 190Nm @ 4300rpm
- 17-inch alloy wheels
- Electric sunroof
- Mirror-mounted side turn indicators
- Leather-appointed seat trim
- Leather-wrapped steering wheel
- Paddle shift



## Civic Hybrid

The Civic Hybrid comes standard with:

### POWERTRAIN

- 1.5 litre SOHC i-VTEC engine with Integrated Motor Assist (IMA)
- 82kW @ 5500rpm° and 172Nm @ 1000-3500rpm°
- Continuously Variable Transmission (CVT)
- Electric Power Steering (EPS)
- Hill Start Assist

### EXTERIOR

- 15-inch alloy wheels
- Auto on/off headlights with blue lens
- Chrome/body colour grille with blue accent
- Chrome exterior door handles
- LED brake lights
- Mirror-mounted side turn indicators
- Rain-sensing automatic front wipers
- Rear ducktail spoiler

### INTERIOR

- Climate control air conditioning
- Eco Assist and ECON mode
- Fabric seat trim
- intelligent-Multi Information Display (i-MID)
- Eco guide feedback monitor
- Leather-wrapped steering wheel

- 6-speakers (including tweeters)
- Auxiliary jack
- Bluetooth® phone/audio streaming°
- USB connectivity with i-MID integration™
- Steering wheel-mounted controls

### SAFETY

- 5-star ANCAP safety rating
- SRS airbags: dual front, side and full-length curtain
- Advanced Compatibility Engineering (ACE) body structure
- Anti-lock braking system (ABS)
- Electronic Brake-force Distribution (EBD)
- Motion Adaptive Electric Power Steering
- Vehicle Stability Assist (VSA)
- Whiplash mitigation front head restraints



Civic Series II VTi, VTi-L and VTi-LN with grey fabric seat trim.



Civic Series II Sport with black leather-appointed seat trim.



Civic Hybrid with stone fabric seat trim.



Find your true colour



Crystal Black Pearlescent<sup>®</sup>



Taffeta White



Polished Metal Metallic<sup>^</sup>



Carnelian Red Pearlescent<sup>®</sup>



Urban Titanium Metallic<sup>^</sup>



Alabaster Silver Metallic<sup>^</sup>



Green Opal Metallic<sup>^</sup>

<sup>^</sup>Metallic and <sup>®</sup>Pearlescent paint additional cost.

# Civic Specifications

Description	VTi	VTi-L	VTi-LN	Sport	Hybrid
<b>POWERTRAIN</b>					
Engine	Inline 4-cylinder SOHC i-VTEC	Inline 4-cylinder SOHC i-VTEC	Inline 4-cylinder SOHC i-VTEC	Inline 4-cylinder SOHC i-VTEC	Inline 4-cylinder SOHC i-VTEC with IMA
Capacity	1.8 litre - 1798 cc	1.8 litre - 1798 cc	1.8 litre - 1798 cc	2.0 litre - 1997 cc	1.5 litre - 1497 cc
Maximum power	104kW @ 6500rpm	104kW @ 6500rpm	104kW @ 6500rpm	114kW @ 6500rpm	82kW @ 5500rpm <sup>o</sup>
Maximum torque	174Nm @ 4300rpm	174Nm @ 4300rpm	174Nm @ 4300rpm	190Nm @ 4300rpm	172Nm @ 1000-3500rpm <sup>o</sup>
Compression ratio	10.6:1	10.6:1	10.6:1	10.6:1	10.8:1
Bore x stroke (mm)	81 x 87.3	81 x 87.3	81 x 87.3	81 x 96.9	73 x 89.4
Manual transmission	5-speed	5-speed	5-speed	5-speed	CVT
Automatic transmission	5-speed with Grade Logic Control	5-speed with Grade Logic Control	5-speed with Grade Logic Control	5-speed with Grade Logic Control	5-speed with Grade Logic Control
- with paddle shifters	-	-	-	✓	✓
Hill Start Assist (HSA)	-	-	-	-	✓
Emission - Australian standards	Euro 4	Euro 4	Euro 4	Euro 4	Euro 4
CO2 emissions (g/km*)					
- manual	161	-	-	-	-
- automatic	158	158	158	178	104
Fuel type	Unleaded (91RON or higher)	Unleaded (91RON or higher)	Unleaded (91RON or higher)	Unleaded (91RON or higher)	Unleaded (91RON or higher)
- E10 suitable	✓	✓	✓	✓	✓
Fuel supply system	Honda Programmed Fuel Injection (PGM-FI)	Honda Programmed Fuel Injection (PGM-FI)	Honda Programmed Fuel Injection (PGM-FI)	Honda Programmed Fuel Injection (PGM-FI)	Honda Programmed Fuel Injection (PGM-FI)
Fuel consumption combined (litres/100km)*					
- manual	6.8	-	-	-	-
- automatic	6.7	6.7	6.7	7.5	4.4
Fuel consumption urban (litres/100km)*					
- manual	8.9	-	-	-	-
- automatic	9.1	9.1	9.1	10.4	4.9
Fuel consumption extra urban (litres/100km)*					
- manual	5.6	-	-	-	-
- automatic	5.3	5.3	5.3	5.9	4.1
Auto-stop mode (fuel saver)	✓	-	-	-	✓
Drive By Wire throttle system (DBW)	✓	✓	✓	✓	✓
<b>CHASSIS</b>					
Front suspension	MacPherson strut	MacPherson strut	MacPherson strut	MacPherson strut	MacPherson strut
Rear suspension	Multi-Link	Multi-Link	Multi-Link	Multi-Link	Multi-Link
Power steering	Electric	Electric	Electric	Electric	Electric
Stabiliser bars	Front and rear	Front and rear	Front and rear	Front and rear	Front and rear
Front brakes	Ventilated disc	Ventilated disc	Ventilated disc	Ventilated disc	Ventilated disc
Rear brakes	Solid disc	Solid disc	Solid disc	Solid disc	Drum
<b>EXTERIOR</b>					
Body coloured power door mirrors	✓	✓	✓	with turn indicators	with turn indicators
Door handles	Body coloured	Body coloured	Chrome	Chrome	Chrome
Electric sunroof with tilt/slide functionality	-	-	-	✓	✓
Exhaust	Single	Single	Single	Single	Single
Front fog lights	■	■	✓	✓	✓
Front grille	Chrome with black	Chrome with black	Chrome with black	Chrome with black	Chrome with body colour and blue accent
Front wipers	2-speed and intermittent	2-speed and intermittent	Rain sensing (auto) variable intermittent	Rain sensing (auto) variable intermittent	Rain sensing (auto) variable intermittent
Headlights	Halogen	Halogen	Halogen	Halogen	Halogen with blue-tinted lens
- auto on/off dusk-sensing	-	✓	✓	✓	✓
- coming/leaving home function	✓	✓	✓	✓	✓
LED brake lights	-	-	-	-	✓
Rear spoiler - duck tail	-	-	-	-	✓
Rear window demister	✓	✓	✓	✓	✓
Remote keyless entry with boot release	✓	✓	✓	✓	✓
Smart keyless entry with push start engine button	-	-	✓	✓	-
<b>INTERIOR</b>					
Accessory power outlet (12v)	Front	Front	Front	Front	Front
Air conditioning	✓	Auto climate control	Auto climate control	Auto climate control	Auto climate control
Central locking	✓	✓	✓	✓	✓
Centre console with sliding front armrest	✓	✓	✓	✓	✓
Chrome accents	-	✓	✓	✓	✓
Coat hanger	✓	✓	✓	✓	✓
Cruise control	✓	✓	✓	✓	✓
Cup-holders	6	6	6	6	6
Door pockets	Front and rear	Front and rear	Front and rear	Front and rear	Front and rear
Driver's footrest	✓	✓	✓	✓	✓
Dust and pollen filter	✓	✓	✓	✓	✓
Eco Assist system (speedometer display)	✓	✓	✓	✓	✓
ECON Mode	✓	✓	✓	✓	✓
Front seat height adjustment - manual	Driver	Driver	Driver	Driver	Driver
Glovebox	✓	✓	✓	✓	✓
Headlights-on warning	✓	✓	✓	✓	✓
Head restraints (height adjustable)	5	5	5	5	5
Instant fuel economy indicator	✓	✓	✓	✓	✓
Intelligent-Multi Information Display (i-MID)	✓	✓	✓	✓	✓
- average fuel economy and speed	✓	✓	✓	✓	✓
- audio/bluetooth <sup>®</sup> information	✓	✓	✓	✓	✓
- customisable wallpaper	✓	✓	-	-	✓
- distance to empty	✓	✓	✓	✓	✓
- eco guide feedback monitor	-	-	-	-	✓
- IMA power flow monitor	-	-	-	-	✓
- outside temperature display	✓	✓	✓	✓	✓
- odometer	✓	✓	✓	✓	✓
- trip meter	✓	✓	✓	✓	✓
- seat belt reminders	✓	✓	✓	✓	✓
- clock	✓	✓	✓	✓	✓
- time elapsed	✓	✓	✓	✓	✓
- warning messages	✓	✓	✓	✓	✓
Lighting					
- interior light	✓	✓	✓	✓	✓
- map lights	2	2	2	2	2
- luggage area light	✓	✓	✓	✓	✓

# Civic Specifications

Description	VTi	VTi-L	VTi-LN	Sport	Hybrid
<b>INTERIOR CONT.</b>					
Low fuel warning light	✓	✓	✓	✓	✓
Power windows	✓	✓	✓	✓	✓
- auto up/down	Driver	Driver	Driver	Driver	Driver
Rear seat centre arm rest with cup holders	✓	✓	✓	✓	✓
Seats	Fully reclining	Fully reclining	Fully reclining	Fully reclining	Fully reclining
- front	60/40 split fold down	60/40 split fold down	60/40 split fold down	60/40 split fold down	Fixed
- rear	✓	✓	✓	✓	✓
Seat back pocket	Driver and front passenger	Driver and front passenger	Driver and front passenger	Driver and front passenger	Driver and front passenger
Seat trim material	Cloth	Cloth	Cloth	Leather appointed	Cloth
Seatbelt height adjuster	Front	Front	Front	Front	Front
Steering column	Tilt and telescopic adjustment	Tilt and telescopic adjustment	Tilt and telescopic adjustment	Tilt and telescopic adjustment	Tilt and telescopic adjustment
Steering wheel	Urethane	Urethane	Urethane	Leather wrapped	Leather wrapped
Sunvisor vanity mirror	Driver and front passenger	Driver and front passenger	Driver and front passenger	Driver and front passenger	Driver and front passenger
Ticket/card holder (driver only)	✓	✓	✓	✓	✓
Windows	Heat absorbing	Heat absorbing	Heat absorbing	Heat absorbing	Heat absorbing
<b>SAFETY AND SECURITY</b>					
Advanced Compatibility Engineering (ACE) body structure	✓	✓	✓	✓	✓
Airbags SRS	Driver and front passenger	Driver and front passenger	Driver and front passenger	Driver and front passenger	Driver and front passenger
- front	Driver and front passenger	Driver and front passenger	Driver and front passenger	Driver and front passenger	Driver and front passenger
- side with OPDS	✓	✓	✓	✓	✓
- full length curtain	✓	✓	✓	✓	✓
Anti-lock Braking System (ABS)	✓	✓	✓	✓	✓
Brake Assist	✓	✓	✓	✓	✓
Brake override system	✓	✓	✓	✓	✓
Child proof rear door locks	✓	✓	✓	✓	✓
Child safety seat anchorages	3	3	3	3	3
Electronic Brake-force Distribution (EBD)	✓	✓	✓	✓	✓
Hazard warning lights	✓	✓	✓	✓	✓
High mounted brake light	✓	✓	✓	✓	✓ (LED)
Honda G-force Control technology (G-Con)	✓	✓	✓	✓	✓
Immobiliser system	✓	✓	✓	✓	✓
Motion Adaptive Electric Power Steering	✓	✓	✓	✓	✓
Progressive crumple zones	Front and rear	Front and rear	Front and rear	Front and rear	Front and rear
Rear park assist	■	■	■	■	■
Rear view mirror	Day/night type	Day/night type	Day/night type	Day/night type	Day/night type
Reversing camera	-	-	✓	✓	-
Seatbelt pretensioners	Front	Front	Front	Front	Front
Seatbelt reminder	Driver and all passengers	Driver and all passengers	Driver and all passengers	Driver and all passengers	Driver and all passengers
Seatbelts	Front	Front	Front	Front	Front
- 3-point ELR	Front	Front	Front	Front	Front
- 3-point ELR/ALR	Rear	Rear	Rear	Rear	Rear
Security alarm system	✓	✓	✓	✓	✓
Transmission shift lock (auto only)	✓	✓	✓	✓	✓
Vehicle Stability Assist (VSA) with Traction Control	✓	✓	✓	✓	✓
Whiplash mitigation head restraints	Driver and front passenger	Driver and front passenger	Driver and front passenger	Driver and front passenger	Driver and front passenger
Windscreens	Laminated	Laminated	Laminated	Laminated	Laminated
<b>DIMENSIONS/WEIGHTS/CAPACITIES</b>					
Overall length (mm)	4540	4540	4540	4540	4540
Overall width (mm)	1755	1755	1755	1755	1755
Overall height (mm)	1435	1435	1435	1435	1430
Wheel base (mm)	2670	2670	2670	2670	2670
Tread (mm)					
- front	1500	1500	1500	1500	1500
- rear	1520	1520	1520	1520	1530
Ground clearance					
- non-load	150	150	150	150	145
- full load	110.1	110.1	110.1	110.1	113.5
Kerb weight (kg)	1210 (man), 1235 (auto)	1245	1245	1290	1285
Maximum permissible weight					
- manual	1670 (man), 1690 (auto)	1690	1690	1760	1740
Fuel tank capacity (litres)	57	57	57	57	50
Maximum towing capacity (kg)					
- trailer with brakes	1200 (man), 800 (auto)	800	800	800	Not recommended
- trailer without brakes	500	500	500	500	Not recommended
Boot capacity (litres) - rear seat up	440	440	440	440	351
Seating capacity	5	5	5	5	5
Turning radius at wheel centre (metres)	5.42	5.42	5.42	5.42	5.42
<b>TYRES AND WHEELS</b>					
Wheel size	15 x 6.0 J	16 x 6.5 J	16 x 6.5 J	17 x 7.0 J	15 x 6 J
Tyre size	195/65 R15 91H	205/55 R16 91V	205/55 R16 91V	215/45 R17 91V	195/65 R15 91H
Wheel type	Steel	Alloy	Alloy	Alloy	Alloy
Spare wheel type	Temporary	Temporary	Temporary	Temporary	Temporary
<b>MULTIMEDIA</b>					
AM/FM radio, single CD player with MP3/WMA playback compatibility	✓	✓	✓	✓	✓
Antenna	In-glass	In-glass	In-glass	In-glass	Micro
Auxiliary jack	✓	✓	✓	✓	✓
Bluetooth <sup>®</sup> audio streaming <sup>o</sup>	✓	✓	✓	✓	✓
Bluetooth <sup>®</sup> hands-free telephone system <sup>o</sup>	✓	✓	✓	✓	✓
DVD player <sup>‡</sup>	-	-	✓	✓	-
Satellite Navigation system with SUNA Live Traffic Updates <sup>‡</sup>	-	-	✓	✓	-
Speakers					
- front door	2	2	2	2	2
- rear door	2	2	2	2	2
- front tweeters	-	-	-	-	2
Speed-sensitive Volume Compensation (SVC)	✓	✓	✓	✓	✓
Steering wheel mounted audio, i-MID, cruise and Bluetooth <sup>®</sup> telephone controls	✓	✓	✓	✓	✓
USB connectivity with i-MID integration <sup>‡</sup>	✓	✓	✓	✓	✓

✓ Standard feature. ■ Accessory option. - Not available. \*Figures quoted are based on ADR81/02 test results. You may experience different results depending on driving conditions and the conditions of the vehicle. <sup>o</sup>Civic Hybrid power and torque figures are based on the combination of petrol and electric engines. <sup>o</sup>The Bluetooth word mark is owned by the Bluetooth SIG, Inc. and use of such mark by Honda is under licence. Please check the list of compatible phones at [honda.com.au/bluetooth](http://honda.com.au/bluetooth) <sup>‡</sup>Not all devices are compatible and functionality will vary depending on the device. <sup>‡</sup>DVD player operates only while vehicle is stationary. <sup>‡</sup>SUNA is a registered trademark of Intelematics Pty. Ltd.

## Make your Civic truly yours

With a host of Genuine Honda Accessories available, the Civic is not merely a car, but a vehicle for self-expression. Whether you're looking to lend a little more luxury or want to make the most of the Civic's sporty side, there are enhancements that will deliver the desired effect. And being genuine, you know they'll fit perfectly and perform flawlessly. For more information, contact your local Dealer or visit [honda.com.au/civic](http://honda.com.au/civic)



### Alloy wheels (up-size)

17-inch for VTi-L and VTi-LN (left). 18-inch for Sport (right). Tyres sold separately.



### Rear tail spoiler - duck tail

Not applicable to Hybrid model.



### Rear tail spoiler - wing type

Not applicable to Hybrid model.



Civic Series II Sport shown in Polished Metal fitted with Modulo Sports Pack, 18-inch alloy wheels, exhaust pipe finisher and rear park assist.

## Modulo Sports Pack

Make your new Civic even more uniquely yours with the Modulo Sports Pack. Designed to complement and accentuate the Civic's already sleek, athletic design, you can choose the complete kit or mix and match to create your own personal combination.

### Modulo Sports Pack (not applicable to Hybrid model):

- Front under spoiler
- Rear under spoiler<sup>M</sup>
- Side skirt set<sup>Q</sup>
- Rear tailgate spoiler (wing type)

See your Honda Dealer for advice regarding Genuine Honda Accessories. Pictured accessories are all sold separately. All Genuine Honda Accessories installed at the time of retail sale of a new motor vehicle are covered by Honda's 3-year/100,000km Warranty. If installed after retail sale, they are covered for the remainder of the warranty or a minimum of 12 months - whichever is greater - provided that the accessory is fitted only to the vehicle for which it was intended by Honda Motor Co.

<sup>M</sup>Rear under spoiler is not compatible with the accessory rear mud guard set. <sup>Q</sup>Side skirt set is not compatible with the accessory front mud guard set.



### Sports grille



### Sports pedal set

Accent lighting also shown (sold separately).



### Door sill garnish set

Available in metal (shown) and illuminated finish.



### Interior trim panel set

6-piece set.



## To serve and protect

Countless hours of thought were invested in delivering the Honda Civic, whose looks are as beautiful as its performance. To help keep it looking its best, there's a range of Genuine Honda Accessories to protect against damage. And because the Civic is not just for show, there is also a host of practical additions that will have you ready to carry and store whatever, wherever, with absolute ease.

### Other accessories available:

- Ash tray
- Bonnet protector
- Car body cover
- Cigar lighter
- Door visor set
- Drink and utility holder set
- Exhaust pipe finisher
- Headlight protector set
- Leather maintenance kit
- Roof rack attachments
  - Tie downs
  - Universal attachment
- Touch-up paint
- Tow bar kit<sup>f</sup>
- Trailer plug adapter<sup>f</sup>
- Wheel lock nut set



Organiser box



Bootlip protector



Luggage area protector tray

Not applicable to Hybrid model.



Cargo net



Fog lights

Available for VTi and VTi-L.



Deluxe tailored mat set



All-weather rubber mat set



Automatic dimming mirror



Rear park assist



Door styling guards



Mud guard set<sup>a</sup>

Front and rear sets sold separately.



Roof rack set<sup>±</sup>

45kg load capacity.



Bike carrier attachment



Ski/snowboard attachment



Kayak attachment



Roof box

31kg load capacity. 450 litres.

See your Honda Dealer for advice regarding Genuine Honda Accessories. Pictured accessories are all sold separately. All Genuine Honda Accessories installed at the time of retail sale of a new motor vehicle are covered by Honda's 3-year/100,000km Warranty. If installed after retail sale, they are covered for the remainder of the warranty or a minimum of 12 months - whichever is greater - provided that the accessory is fitted only to the vehicle for which it was intended by Honda Motor Co.

<sup>±</sup>In the interest of aerodynamics, Honda recommends the roof rack set be removed when not in use. <sup>a</sup>The front mud guard set is not compatible with the accessory side skirt set. The rear mud guard set is not compatible with the accessory rear under spoiler. <sup>f</sup>Not applicable to Civic Hybrid and Series I Sport models. See specifications page for load ratings.

# You're never alone in a Honda

Buy a Civic and you'll be amazed at how well you'll be looked after.

The care starts with a 3-year/100,000 km warranty, 6-year rust perforation warranty and 8-year/unlimited kilometre warranty on the IMA battery<sup>§</sup>

You'll also have access to HondaONE, our exclusive website that gives you up-to-date service history, vehicle records, maintenance tips and service reminders.

And by using your Honda Dealer, you'll also be sure that they'll protect your investment by using Honda Genuine Parts.

So with all these benefits, your Civic will be as pleasurable to own as it is to drive.

## Warranty

For extra peace of mind, why not purchase Honda Warranty Plus? In addition to Honda's New Vehicle Warranty we can offer a host of benefits exclusive to Warranty Plus owners, with no claim limit for labour or parts. For more information visit [honda.com.au/warranty](http://honda.com.au/warranty)

## Insurance

If you're looking for cover every bit as reliable as your Civic, you really need Honda Motor Vehicle Insurance.

You'll enjoy a range of benefits, including:

- 3-year new replacement if your Honda is a total loss
- Genuine Honda approved parts for the first 3 years
- Lifetime guarantee on authorised repairs.

Approved applicants only. Normal underwriting and excess payment rules apply.<sup>^</sup> For more information visit [honda.com.au/insurance](http://honda.com.au/insurance)

## Finance

Whether you're buying a Honda for yourself or a business, we have a wide range of flexible finance and leasing options.

So see your Honda Dealer to find a financial solution that suits you as perfectly as your Civic does. For more information visit [honda.com.au/finance](http://honda.com.au/finance)

## Honda Approved Pre-Owned Hybrids

Buying a pre-owned Honda hybrid from a Honda Dealership means you can buy with confidence. Every certified pre-owned Honda hybrid receives a 1-year warranty extension and roadside assistance. Not to mention Honda Hybrid Rewards, which entitle you to a \$100 rebate for each of the next four scheduled services<sup>®</sup> conducted at a Honda Dealership.<sup>~</sup> For more information contact your participating Honda Approved Pre-owned Car Dealership or visit [honda.com.au/preowned](http://honda.com.au/preowned)

## Merchandise

Show your true colours with genuine Honda merchandise. For everything from apparel to travel goods, visit your local Honda dealer or view the range at [honda.com.au/merchandise](http://honda.com.au/merchandise)



## What's next?

As a Civic owner, you're part of a brand that's always doing something new. Because if there's one thing Honda prides itself on, it's always asking, "What's next?"

It was this inventive spirit that led to innovations like the Civic's intelligent and intuitive i-MID display.

It also led to Earth Dreams Technology, which is a revolutionary set of next-generation technological advancements in engine and transmission systems that take into account both our need to protect the environment and our desire to provide a joy of driving.

It also produced the new CR-Z, the world's first sporty hybrid coupe. And that's not our first 'world first' either.

There's the FCX Clarity, which is powered by a hydrogen cell and whose only emission is water vapour.

Or the unique CIGS solar cells that produce twice as much energy than they take to make.

Then of course there's ASIMO, the world's most advanced humanoid robot and the incredibly fuel-efficient HondaJet.

And now there's a glimpse of the future with the altogether different U3-X, a personal mobility device that takes you in any direction by simply shifting your weight.

All of these things, which were once dreams, are now realities thanks to Honda. So what's next?

<sup>§</sup>Honda warranties apply where due care is exercised by the owner and the vehicle is maintained in accordance with the Owner's Warranty and Service Manual. Please visit [honda.com.au/warranty](http://honda.com.au/warranty) for full terms and conditions. <sup>^</sup>Honda Insurance is underwritten by Allianz Australia Insurance Limited Licence No. 234 708 ABN 15 000 122 850 (Allianz). In arranging this insurance Honda Australia Pty Ltd ABN 66 004 759 611 and the authorised dealers act as agents of Allianz and not as your agent. In entering into a contract of insurance for this policy, you acknowledge that this Product Disclosure Statement (PDS), your Schedule and any other document which we tell you forms part of this policy (Policy Documentation), sets out the entire agreement that exists between you and Allianz in connection with this policy. You also acknowledge that you have not relied on any prior representations which are not expressly included in or are otherwise inconsistent with the Policy Documentation. Neither Honda nor any of its related companies have any liability in respect of this policy. <sup>®</sup>Valid for up to 4-scheduled services and/or 2 years. Please refer to the Owners Warranty and Service Log Book for schedule services. Used Honda hybrid vehicle must have passed a 150-point inspection check, be less than 5 years old and under 100,000kms. <sup>~</sup>Offer valid at participating Honda Approved Pre-owned Car dealerships only.