



mazda



MX-5



Mazda 6



Mazda 3



BT-50



Mazda 2



CX-9



CX-7



RX-8

Mazda 2

zoom-zoom
zoom-zoom



mazda

Sometimes you're on the move

Other times you're still

But life is always in motion

And you're always on your way

To the next place

The next stage

The next adventure



WATCH VIDEO >



WATCH TV AD >

Nothing is as exciting as what's ahead

So while Mazda2 is compact, it puts no limits on you

It looks after you like a friend

Moves like a part of you

Is as keen to get going as you are

And loves every journey

We call this Zoom-Zoom





***ALL THE BEST THINGS
IN ONE PLACE***

When lots of things you like come together, it makes for something special. It could be getting all your friends around one table. Or checking out a city that's bursting with life. Mazda2 also puts a lot that's great in one place. It's compact, but packs in everything you need to live large. It's light and streamlined to be more affordable to run, yet solid enough to keep you grounded.

The sporty design moves through town with agile ease, and responsive steering handles both city and country with confidence. And it's little enough to squeeze into the tightest spots. At its core is a 1.5 litre engine that's light on fuel, and still gives you all the go you need. In fact, its fuel economy is up there with the best.

While great style always seems effortless, a lot of work goes into looking good. So Mazda2 is crafted down to the tiniest detail - classy co-ordination and stylish highlights give its well-toned body plenty of street presence. For a car this size, it packs in a whole lotta Zoom-Zoom.



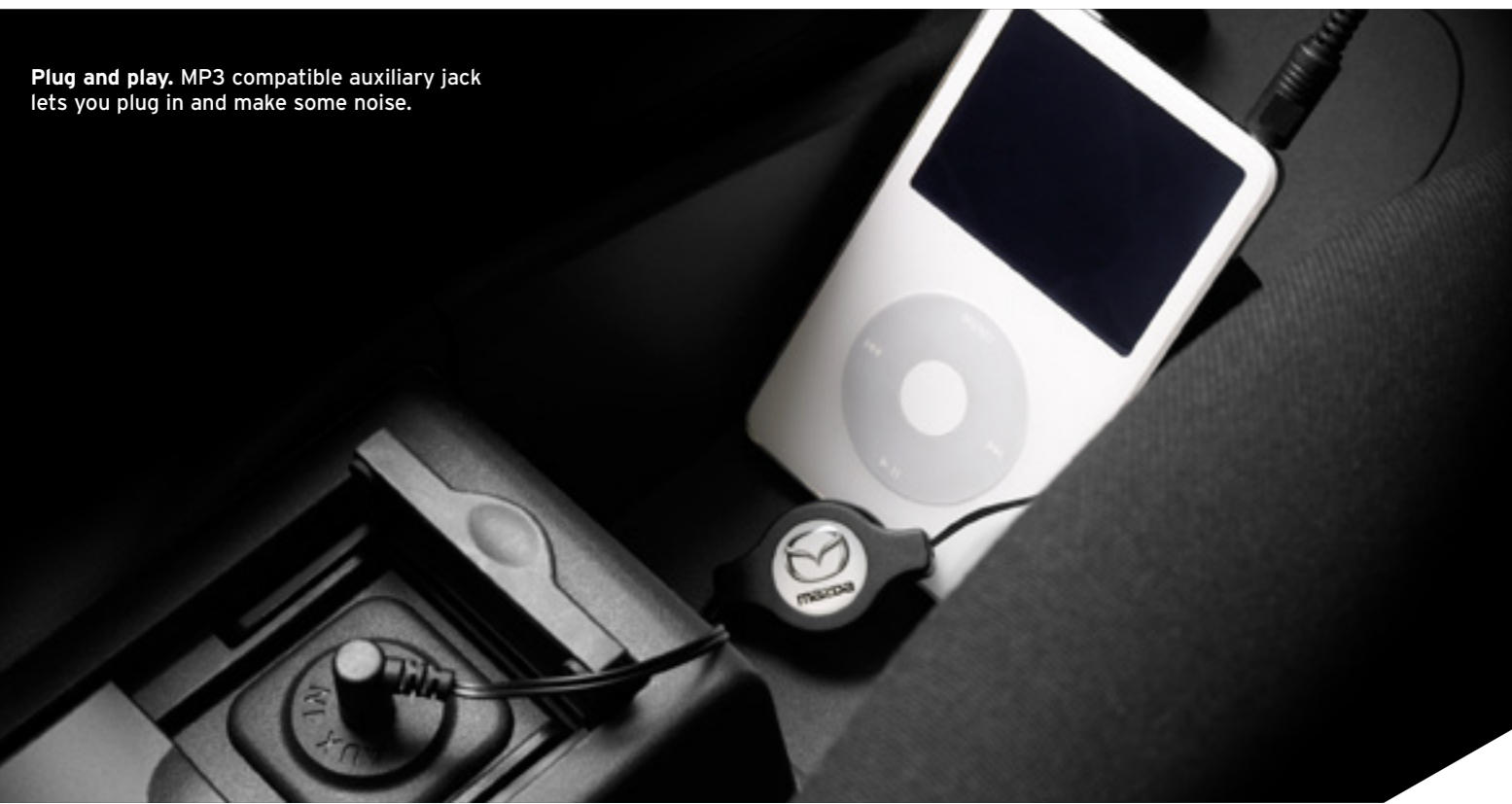
EVERYTHING CLICKS INSIDE

It's when you get to know the little things about Mazda2 that everything just clicks. Every detail feels like it's designed just for you, from clever ideas including a rack for things like maps and glossies, to the front console putting everything you need close by. Or perfectly placed cup-holders that keep your favourite refreshment handy. You know, the important stuff.

Power windows and mirrors make things easier still. And a big soundtrack is also important. That's why Mazda2 packs a CD player with four punchy speakers and an auxiliary jack so you can hook up your MP3 player and go. You get cruise control across the range while Genki adds climate control air-conditioning, automatic headlamps, rain-sensing wipers and a trip computer. And with a stylishly uncluttered instrument panel, everything feels roomier.

But the easy-to-get-along-with feeling doesn't stop there. Add enough carrying space for the biggest weekend away or the most serious shopping day, and you begin to see the big places that Mazda2 can take you.

Plug and play. MP3 compatible auxiliary jack lets you plug in and make some noise.



The wheel thing. And to help you carry all this off: Neo has 15 inch steel wheels (above), Maxx has 15 inch alloys (top). Genki has gorgeous 16 inch alloys (right).



Hit play. All models put audio controls right on the steering wheel.

Switched on. Power window and mirror switches are a wrist flex away.



Get in gear. Take your pick of a slick shifting 5-speed manual, or keep it simple with smooth 4-speed auto.



Open for business, and for fun. A push button-operated hatch opens up a roomy luggage area.

STAY OUT OF TROUBLE

The best way to be safe is to avoid trouble altogether - and that's where it's great to have Mazda2's agile, secure handling on your side. But it's also looking out for you in many other ways.

At its core is the Mazda Advanced Impact Distribution and Absorption System (MAIDAS), which absorbs and redirects impact energy away from the rigid occupant cell. Every model comes with ABS and Dynamic Stability Control (DSC), to help keep you headed to where you want to go, and stop you from going anywhere you don't. It's also good to know you're looked after by front, side and curtain airbags across the range. Front seatbelts are equipped

with reminders, plus pretensioners and load-limiters. Powerful brakes give you that extra confidence. They're backed up by ABS to help avoid skids under braking, plus Electronic Brake-force Distribution (EBD) that optimises braking according to the load on board. What's more, Emergency Brake Assist (EBA) recognises emergency braking and gives you added stopping power right when you need it.

And there's even more reason to feel secure. Mazda2 is equipped with an engine immobiliser and remote central locking to keep out unwelcome guests.

In control. Fully independent suspension delivers responsive, secure handling. Electric steering system enhances control.



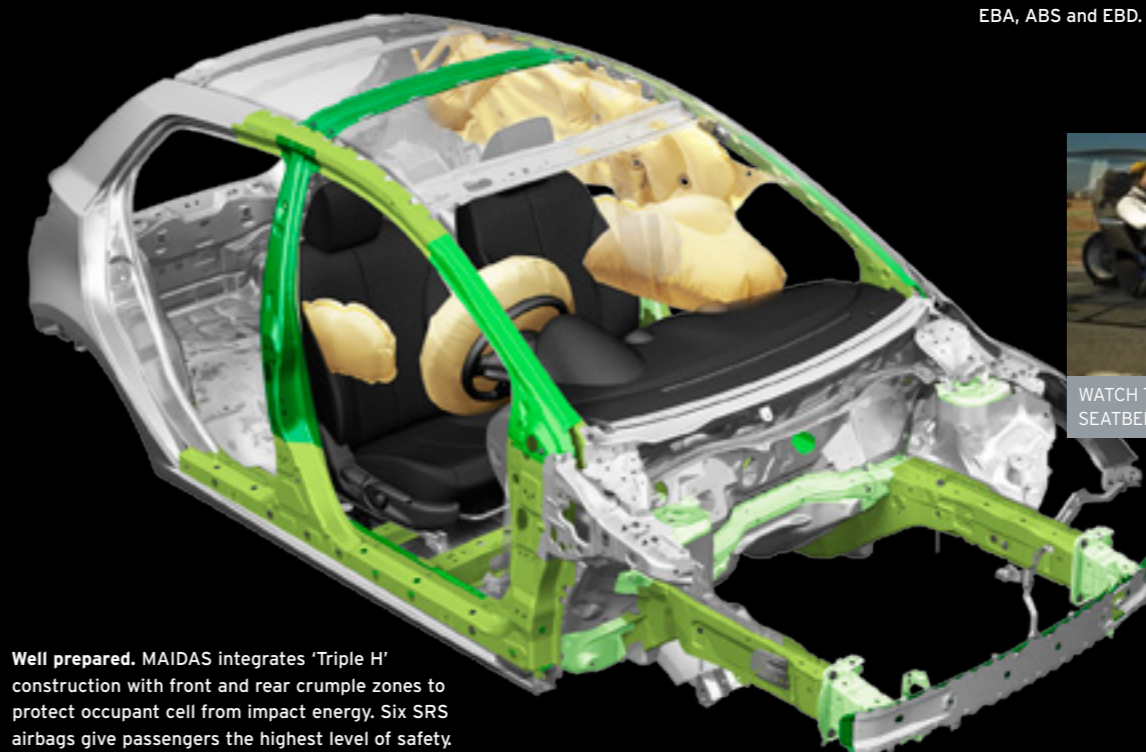
WATCH THE DYNAMIC STABILITY CONTROL (DSC) ANIMATION >



Prepared for the unexpected. So what if you're faced with an unanticipated hazard and have to react suddenly? DSC acts instantly, braking the inner rear wheel to counter understeer (or outer front wheel to counter oversteer). At the same time, the TCS reduces torque to the driven wheels to minimise slip. As a result, control is maintained and the vehicle can be safely steered around the obstacle.

Secure stopping. Stopping distance with EBA, ABS and EBD.

Stopping distance with no assistance.



Well prepared. MAIDAS integrates 'Triple H' construction with front and rear crumple zones to protect occupant cell from impact energy. Six SRS airbags give passengers the highest level of safety.



WATCH THE AIRBAGS AND SEATBELTS ANIMATION >

Well handled. Every Mazda2 is fitted with high performance tyres for superior handling and safety.

NEO

Chic looks, smart features, and great economy too. Add Zoom-Zoom enjoyment and Neo gives you all the best things in a small package.

- 1.5 litre in-line 4 cylinder DOHC S-VT
- 76 kW @ 6,000 rpm (max. power)
- 135 Nm @ 4,000 rpm (max. torque)
- 42 litre fuel tank capacity
- 5-speed manual or 4-speed automatic
- 15 inch steel wheels
- Headlamps (halogen)
- Power mirrors and windows
- Air-conditioning
- Cruise control
- Seat trim: cloth
- Seats (front) with: height adjustment (driver)
- Seats (rear) with: 60/40 split fold backrest
- Tilt adjustable steering wheel
- Vanity mirrors (front)
- Wipers (front) 2-speed with variable intermittent function
- Wiper (rear) with intermittent function
- AM/FM tuner with CD player, single disc (MP3 compatible) and 4 speakers
- Auxiliary input (3.5 mm MP3 player compatible)
- Steering wheel-mounted audio controls
- Airbags SRS: front (driver and passenger), side (front) and curtain (front and rear)
- Anti-lock Braking System (ABS)
- Dynamic Stability Control (DSC)
- Electronic Brake-force Distribution (EBD)
- Emergency Brake Assist (EBA)
- Remote central locking
- Traction Control System (TCS)
- 'Triple H' safety construction with front and rear crumple zones



Hatch



NEO IN SPIRITED GREEN METALLIC

MAXX

With Maxx you'll really make your mark. Gorgeous sports alloy wheels and a cheeky rear roof spoiler help you stand out.

Maxx features additional to Neo include:

- 15 inch alloy wheels
- Rear roof spoiler



Hatch



MAXX IN TRUE RED

GENKI

Who says you can't have it all? Genki has got everything you could wish for, including street-smart looks and luxuries you'll love.

Genki features additional to Maxx include:

- 16 inch alloy wheels
- Exhaust extension (chrome)
- Fog lamps (front)
- Side skirts
- Air-conditioning (climate control)
- Ambient temperature display
- Headlamps auto on/off function
- Leather gear shift knob (manual only)
- Leather-wrapped steering wheel
- Trip computer (current and average fuel consumption, distance to empty and average vehicle speed)
- Wipers (front) 2-speed with rain-sensing function



Hatch



SPECIFICATIONS

Neo

Maxx

Genki

Powertrain

Engine type	1.5 litre in-line 4 cylinder 16 valve DOHC S-VT		
Engine capacity	1,498 cc		
Bore and stroke	78.0 mm x 78.4 mm		
Compression ratio	10.0 : 1		
Maximum power	76 kW @ 6,000 rpm		
Maximum torque	135 Nm @ 4,000 rpm		
Throttle control	Electronic (drive-by-wire)		
Fuel system	Electronic fuel injection		
Fuel tank capacity	42 litres		
Recommended fuel	Unleaded (91RON or higher) or E10		
Fuel consumption ¹	man (combined)	6.4 litres per 100 km	
	auto (combined)	6.8 litres per 100 km	
Emission standard	Euro stage IV		
Manual transmission	5-speed		
Automatic transmission	4-speed		
Gear ratio	1st - man / auto	3.416 / 2.816	
	2nd	1.842 / 1.553	
	3rd	1.290 / 1.000	
	4th	0.972 / 0.695	
	5th	0.775 / -	
	reverse	3.214 / 2.279	
	final drive	4.105 / 4.147	

Chassis

Brake type	front	Ventilated disc		
	rear	Drum		
Steering type	Electric power assist steering			
Steering wheel turns lock to lock	2.7			
Suspension	front	MacPherson strut		
	rear	Torsion beam		
Turning circle	kerb to kerb	9.8 m		
Tyre size		185/55R15 82V	185/55R15 82V	195/45R16 80W
Wheel size		15 x 6.0 J	15 x 6.0 J	16 x 6.5 J
Wheel type		Steel	Alloy	Alloy
Wheel type (spare)			Temporary	

Weights and capacities

Cargo room	volume (VDA)	250 litres	250 litres	250 litres
	volume (VDA) ²	469 litres	469 litres	469 litres
Kerb weight man	man	1,010 kg	1,010 kg	1,016 kg
	auto	1,032 kg	1,032 kg	1,038 kg
Towing capacity ³	braked	700 kg	700 kg	700 kg
	unbraked	500 kg	500 kg	500 kg

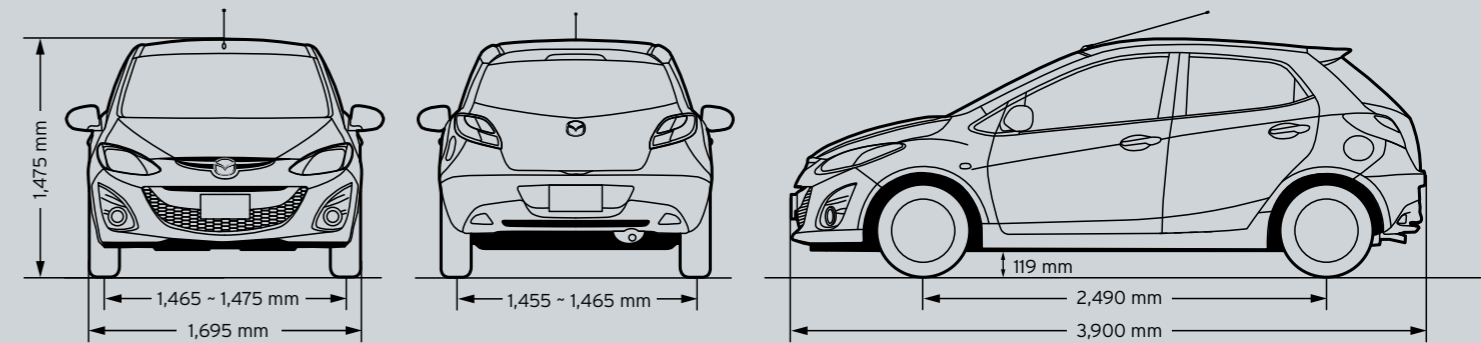
Neo

Maxx

Genki

Dimensions

Ground clearance	laden	119 mm	119 mm	119 mm
Overall height		1,475 mm	1,475 mm	1,475 mm
Overall length		3,900 mm	3,900 mm	3,900 mm
Overall width		1,695 mm	1,695 mm	1,695 mm
Track	front	1,475 mm	1,475 mm	1,465 mm
	rear	1,465 mm	1,465 mm	1,455 mm
Wheelbase		2,490 mm	2,490 mm	2,490 mm



MAXX IN AQUATIC BLUE MICA

SPECIFICATIONS

Neo

Maxx

Genki

Exterior

	Neo	Maxx	Genki
Door handles (body coloured)	●	●	●
Exhaust extension (chrome)	-	-	●
Fog-lamps (front)	-	-	●
Front and rear bumpers (body coloured)	●	●	●
Green-tinted windscreen, side and rear windows	●	●	●
Headlamps (Halogen)	●	●	●
Metallic/Mica paint	●	●	●
Mudflaps (front and rear)	●	●	-
Power mirrors and windows	●	●	●
Rear spoiler	-	●	●
Side skirts	-	-	●

Interior

12 volt power outlet	●	●	●
Air-conditioning	●	●	-
Air-conditioning (climate control)	-	-	●
Ambient temperature display	-	-	●
Cruise control	●	●	●
Cupholders	●	●	●
Digital clock	●	●	●
Door ajar warning light	●	●	●
Door map pockets (front)	●	●	●
Driver's left footrest	●	●	●
Glove box with magazine rack	●	●	●
Headlamps auto on/off function	-	-	●
Illuminated entry system with delayed fade	●	●	●
Instrument panel light dimmer	●	●	●
Interior illumination:			
cargo room lamp	●	●	●
dome lamp	●	●	●
Interior release for fuel filler door	●	●	●
Leather-wrapped:			
manual gear shift knob	-	-	●
steering wheel	-	-	●
Lights-left-on audible warning	●	●	●
Low fuel warning light	●	●	●
Passenger assist grip (front)	●	●	●
Rear console tray	●	●	●
Seat trim:			
cloth	●	●	●
Seats (front) with:			
adjustable head restraints	●	●	●
height adjustment (driver)	●	●	●
rake and slide adjustment	●	●	●
Seats (rear) with:			
60/40 split-fold backrest	●	●	●
adjustable head restraints	●	●	●

Neo

Maxx

Genki

Interior (continued)

	Neo	Maxx	Genki
Tachometer and electronic odometer/tripmeter	●	●	●
Trip computer (current and average fuel consumption, distance to empty and average vehicle speed)	-	-	●
Vanity mirrors (front)	●	●	●
Ventilation pollen filter	●	●	●
Window demister (rear)	●	●	●
Wipers (front) 2-speed with intermittent function	●	●	-
Wipers (front) 2-speed with rain-sensing function	-	-	●
Wiper (rear) with intermittent function	●	●	●

Audio

	Neo	Maxx	Genki
AM/FM tuner	●	●	●
Auxiliary input (3.5 mm MP3 player compatible)	●	●	●
CD player, single disc (MP3 compatible)	●	●	●
Speakers (4)	●	●	●
Steering wheel-mounted audio controls	●	●	●

Safety

Airbags SRS:	front (driver and passenger), side (front), curtain (front and rear)	●	●	●
Anti-lock Braking System (ABS)		●	●	●
Child restraint anchor points and childproof rear door locks		●	●	●
Collapsible steering column		●	●	●
Dynamic Stability Control (DSC) - switchable on/off		●	●	●
Electronic Brake-force Distribution (EBD)		●	●	●
Emergency Brake Assist (EBA)		●	●	●
Engine immobiliser		●	●	●
High mount stop lamp		●	●	●
Intrusion-minimising brake pedal		●	●	●
Left-hand-side convex (wide angle) exterior mirror		●	●	●
One touch (up and down) power window (driver)		●	●	●
Remote central locking (one transmitter with retractable key)		●	●	●
Seat-belt warning audible and visual (front)		●	●	●
Seat-belts 3-point lap-sash (all seats)		●	●	●
Seat-belts (front) with pretensioners, load-limiters and height adjustable shoulder anchorages		●	●	●
Side impact door beams		●	●	●
Traction Control System (TCS)		●	●	●
'Triple H' safety construction with front and rear crumple zones		●	●	●
Whiplash-minimising front seats		●	●	●



GRAM STRATEGY

LESS WEIGHT MEANS MORE ZOOM-ZOOM

If a car is lighter, it's more responsive and alive to drive. More fun, in other words. Not only that, but it uses less fuel and creates lower emissions. With Mazda2, we challenged ourselves to cut weight by 100kg - a huge amount for a small car. This goal was achieved by looking beyond major components such as the body, chassis and engine. We examined every last bolt and nut looking to save weight, while maintaining strength and safety. This 'gram strategy' came from the realisation that if every part could be made just a gram lighter, it would add up to several kilos. You'll appreciate this exacting approach from behind the wheel of Mazda2. Because at Mazda, Zoom-Zoom is something we're always looking to add more of.

Rest assured - your warranty

The quality built into Mazda2 is backed up by a 3-year, unlimited kilometre



factory warranty and 6-year panel protection warranty. For further information on Mazda warranties, go to mazda.com.au

Maintain that Zoom-Zoom

Your Mazda2 deserves the best in care. Servicing through the Mazda Maintenance

Program gives your car the advantage of factory trained Service Technicians and advanced computer diagnostic systems. As well as maintaining your Mazda in top condition, you'll also be protecting its outstanding resale value.

Help is at hand - Mazda Roadside Assistance

Flat batteries, running out of fuel and flat tyres - everyone faces hiccups from

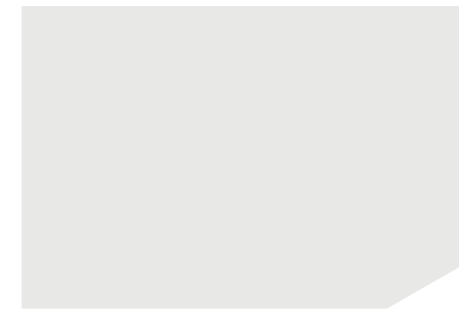
time to time. When the unexpected happens, Mazda Roadside Assistance is there to keep you moving. You'll be covered 24 hours a day, 365 days a year, anywhere in Australia. Better still, your Mazda will only be worked on by Mazda-approved technicians. Choose a Standard policy offering everything needed to get going again, or the Premium policy with extra benefits like accommodation, a rental car and vehicle recovery. Either policy can be purchased across the entire Mazda range. Get more at mazda.com.au

Accessories add enjoyment

Mazda2 packs a whole lot of enjoyment into a small car. And with Mazda Genuine Accessories, Mazda2 ownership is even more fun. They let you personalise your car, and protect its value. They also offer great design, quality and safety, plus the backing of a Genuine Mazda Warranty. Mazda Genuine Accessories give you even more Zoom-Zoom.

COLOURS

Exterior



Crystal White Pearl
Mica



Aluminium
Metallic



Aquatic Blue
Mica



Spirited Green
Metallic



True Red



Burgundy Red
Mica

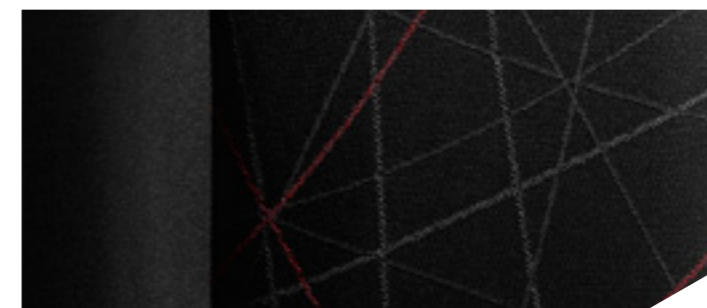


Metropolitan Grey
Mica



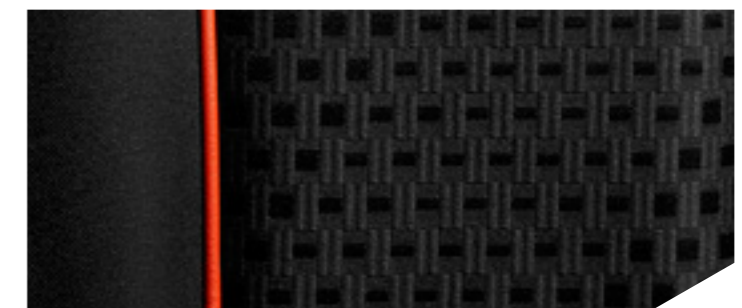
Brilliant Black

Interior



Neo

Interior



Maxx & Genki

Mazda2 ACCESSORIES

ZOOM-ZOOM

MAKE YOUR Mazda EVEN MORE REWARDING

Mazda2 packs a whole lot of enjoyment into a small car. And Mazda Genuine Accessories make owning one even more fun. They let you personalise your car, and protect its value. They also offer great design, quality and safety, plus the backing of a Mazda warranty. Mazda Genuine Accessories let you enjoy even more Zoom-Zoom.



Chrome side indicator bezel
Sends a very stylish signal.



Centre console organiser
Keep bits and pieces in order with this organiser's handy compartments.



Chrome exhaust tip
Highlight you car's great looks.
(Neo and Maxx only.)



Scuff plates
Attractive protection against entry marks and scratches.



Fog-lamps
Enjoy improved visibility in all conditions.
(Neo and Maxx only.)





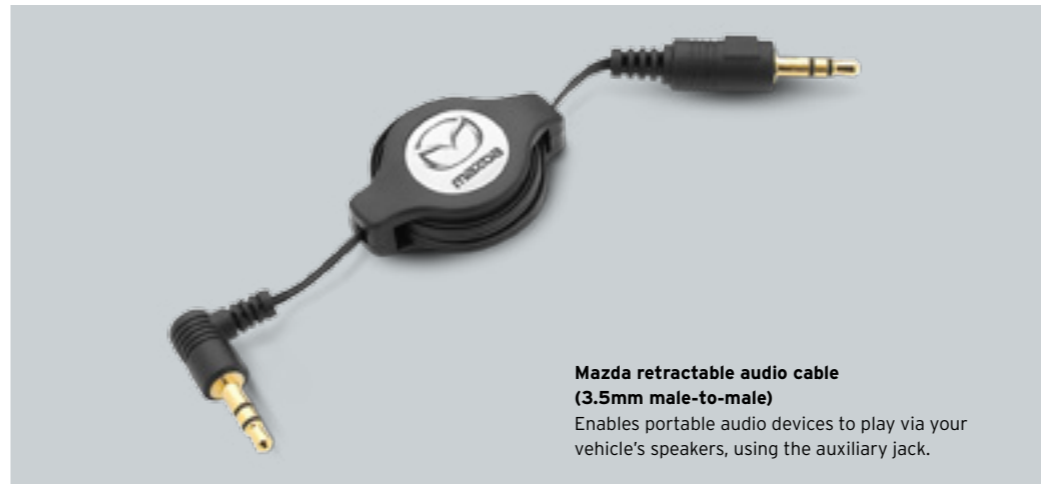
Bonnet protector
Guards against damage from stones and other debris.

Headlight protectors
Safeguard headlamp lenses against damage.

Front parking sensors
Advanced sensors use audio alert to make parking simple.



Cargo tray
Sturdy with raised sides, this tray provides maximum waterproofing and non-slip grip.



Mazda retractable audio cable (3.5mm male-to-male)
Enables portable audio devices to play via your vehicle's speakers, using the auxiliary jack.

High specification alarm
Gives you added security and peace of mind.



Auto lights on/off
Monitors outside light levels and turns headlamps on or off accordingly. (Neo and Maxx only.)



Tow bar
Designed for Mazda2, with a 700kg (braked)* capacity.



*Subject to State or Territory regulations. Please refer to your Mazda Dealer for further information.

[▶ PLAY VIDEO](#)

- Also available**
- ▶ Ashtray and cigarette lighter.
 - ▶ Collapsible sun screen.

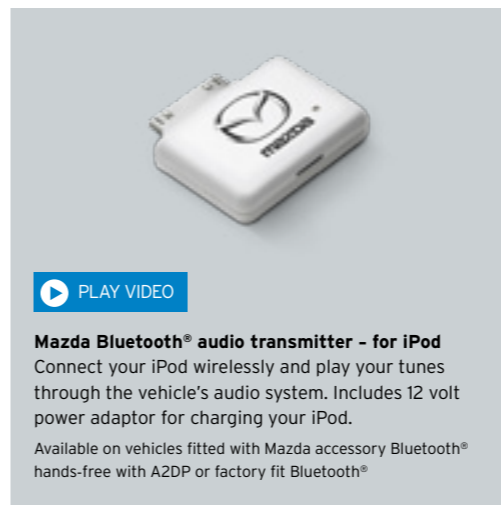
To see the full range of Mazda Genuine Accessories, go to **MAZDA.COM.AU**



Floor mats (set of four)
Protect your carpet with these high-quality, tailor-made floor mats.

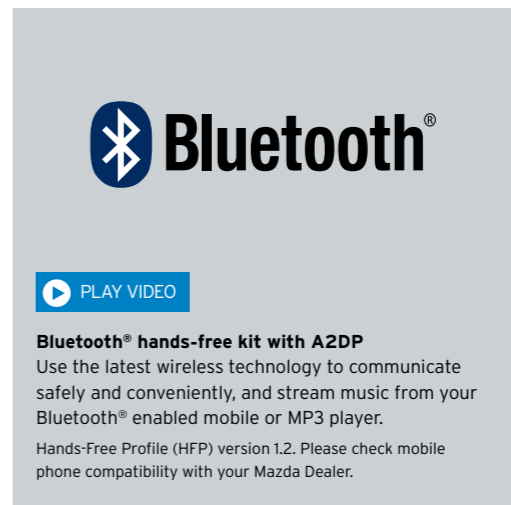


Boot lip protector.
Protect your rear bumper and boot lip from scratches and scuffs during loading and unloading.



[▶ PLAY VIDEO](#)

Mazda Bluetooth® audio transmitter - for iPod
Connect your iPod wirelessly and play your tunes through the vehicle's audio system. Includes 12 volt power adaptor for charging your iPod.
Available on vehicles fitted with Mazda accessory Bluetooth® hands-free with A2DP or factory fit Bluetooth®



[▶ PLAY VIDEO](#)

Bluetooth® hands-free kit with A2DP
Use the latest wireless technology to communicate safely and conveniently, and stream music from your Bluetooth® enabled mobile or MP3 player.
Hands-Free Profile (HFP) version 1.2. Please check mobile phone compatibility with your Mazda Dealer.

All care is taken to ensure the accuracy of this brochure at the time of publication. Sports and other equipment shown are for illustrative purposes only and do not come standard with the vehicle, or as Mazda Genuine Accessories. Specifications, features and availability may vary from State to State and may change without notice. Please refer to mazda.com.au or consult your Mazda Dealer prior to placing an order to ascertain current information on availability, specifications, features and prices. Mazda Australia Pty Limited will not be liable for any loss arising from the information in this brochure, whether in negligence or otherwise. Mazda Australia Pty Limited ABN 78 004 690 804, 385 Ferntree Gully Road, Mount Waverley, Victoria 3149. All Mazda Genuine Accessories fitted at the point of sale of a new Mazda passenger vehicle are covered under the Mazda 3-year/unlimited kilometre warranty. Mazda Genuine Accessories fitted after the sale of a new Mazda vehicle are covered by the Mazda 2-year or 40,000 kilometre warranty (whichever should occur first). iPod is a trademark of Apple Inc., registered in the U.S. and other countries. Please check the compatibility of your Bluetooth® device (particularly your mobile phone) with the specific Bluetooth® accessory you intend to purchase as not all devices will operate correctly. Consult your Mazda Dealer for further information. Published November 2011. MAZ10002.126.003

Rear roof spoiler

Streamline your Mazda2 while giving it an extra dose of attitude. (Neo only.)

Slimline weathershields (front and rear)

Let fresh air in - keep the worst of the weather out.



Reverse parking sensors

A warning tone helps prevent bumper damage by alerting you to obstacles.

Side skirts

Improves aerodynamics and adds a racy touch. (Neo and Maxx only.)

15 inch alloys

Give your Mazda2 an even sportier look with these 15 inch beauties. (Neo only.)

zoom-zoom
zoom-zoom