

OUTBACK

MODEL YEAR 2012



ALL 4 THE DRIVER™



SUBARU



OUTBACK

BRING ON STORMS.
BRING ON HAIRPINS.
BRING ON GRAVEL ROADS AND DIRT ROADS.
GET OFF THE BEATEN TRACK.
DISCOVER SOMEWHERE NEW.

FREEDOM IS IN OUR DNA

→ UNRAVEL OUR DNA AT SUBARU.COM.AU



ALL 4 THE PERFORMANCE. THE SAFETY. THE RETAINED VALUE

Our DNA is what makes every Subaru a Subaru. It's our constant focus on Performance, Safety and protecting the Retained Value of your Subaru that makes Subaru distinct from any other car brand. Our DNA delivers you, the Driver, the confidence to exploit your Freedom everyday.

POISED PERFORMANCE

Subaru has long been highly regarded for its performance technologies. From the rally circuit to the highway, Subaru's engineering and driving characteristics are focused on delivering a driving experience unlike any other, handling all road and weather conditions with ease, control and comfort.



→ SYMMETRICAL ALL-WHEEL DRIVE

Delivers outstanding grip, balance and control in a variety of road conditions when combined with Subaru's horizontally-opposed Boxer engine technology and a symmetrical drivetrain.



→ HORIZONTALLY-OPPOSED BOXER ENGINE

Ensures smooth power delivery, with less vibration and its low centre of gravity gives optimum balance and control to you, the Driver.

SUPERIOR SAFETY

Impressive safety credentials have earned Subaru the maximum five-star ANCAP occupant safety rating, plus freedom from worry for you, thanks to Subaru's -



→ VEHICLE DYNAMICS CONTROL SYSTEM



→ RING-SHAPED PASSENGER SAFETY CELL

→ DUAL FRONT, DUAL FRONT SIDE, CURTAIN AND DRIVER'S KNEE AIRBAGS



→ ABS, EBD AND 4-WHEEL DISC BRAKES

RETAINED VALUE



Freedom comes from knowing that you've made a great investment. Every Subaru comes into the world as the best car it can be, and then we help you to keep it that way. We promise to protect your freedom by looking after the performance, safety and the retained value of your vehicle. With our dedicated Subaru Service Centres and microscopic **DataDotDNA**® theft protection, your car is in good hands for many years to come.



ALL OF THIS ADDS UP TO A GREATER EXPERIENCE FOR YOU – THE OUTBACK DRIVER. SUBARU. ALL 4 THE DRIVER.™



MODEL SHOWN: Outback 3.6R Premium



GET YOUR LIFE BACK

LIFE'S SHORT. AND IT'S NOT MEANT TO BE LIVED BEHIND A DESK. SO BREAK OUT AND BREAK FREE. MAKE THE MOST OF EVERY HOUR OF DAYLIGHT. MAKE THE MOST OF EVERY MINUTE. SEEK OUT GRAVEL, DIRT AND HAIRPIN TURNS. JUMP INTO THE OUTBACK AND HEAD FOR THE NEAREST MOUNTAIN.

With its sure-footed, wide-body design and Subaru All-Wheel Drive, the Outback's at home in the corners and on gravel. The 213mm of ground clearance and robust design let you easily tackle the road, dirt, gravel and mud. Every facet of the Outback has been designed to give you the confidence to do more.

From the safety enhancements that proudly shape every Subaru, to the intelligent technology that is All 4 the Driver™. The bold exterior, complete with a sporty rear roof spoiler, 17-inch alloy wheels and front fog lights, let you live more adventurously everyday.

→ [EXPLORE OUTBACK AT SUBARU.COM.AU](http://SUBARU.COM.AU)



TOP TO BOTTOM:

- Front fog lights.
- Self-levelling Xenon low beam headlights.¹
- Electric sunroof.²
- Smart key entry.¹

1. Outback 3.6R Premium only. 2. Outback 2.5i Premium, Outback 3.6R Premium and Outback 2.0D Premium models only.



MODEL SHOWN: Outback 3.6R Premium.
Ivory trim available on Outback 3.6R Premium models only.

YOU'LL BE RAPT

WRAP YOURSELF IN OUTBACK'S LUXURIOUS INTERIOR. USE EVERY GADGET, USE EVERY INCH. PACK MORE INTO THE OUTBACK AND GET MORE OUT OF IT. SEE IT AS A REFLECTION OF YOUR LIFE - THE MORE YOU PUT IN, THE MORE YOU GET FROM IT.

From the ski fields to your favourite family beach, the Outback will get you out there having more fun.

With generous leg, shoulder and head room, coupled with reclining rear seats, you can stretch out and enjoy the ride. The one touch lever lets you quickly fold the rear seats in a 60/40 split configuration. Or fold the entire rear row completely flat

for a generous cargo area. The pull-out cargo tie down points and cargo luggage hooks will help keep all your gear in place no matter how rugged the trip, while the retractable cargo security blind keeps it all out of sight. Stylish roof rails also give you the option of adding additional cargo carrying accessories.

→ GET COMFORTABLE AT SUBARU.COM.AU

INSET IMAGES CLOCKWISE TOP TO BOTTOM:
→ Generous and flexible cargo carrying capacity.
→ 60/40 split folding rear seats.
→ Seat back nets - driver and front passenger seats.
→ Fold down rear armrest with cup holders.



GET LOST ON PURPOSE

IT'S YOUR LIFE, SO CHOOSE YOUR DESTINATION. OR MAKE IT UP AS YOU GO ALONG. SURROUNDED BY THE LUXURY OF THE OUTBACK, ONE THING IS FOR CERTAIN – YOU WON'T BE IN ANY RUSH TO GET THERE.

Outback puts the driver in control with steering wheel mounted cruise controls, audio controls and *Bluetooth*^{®1} controls designed to help keep the driver focused on the road ahead. The position of the leather steering wheel can also be adjusted to suit the preference of different drivers, while the simple, ergonomic instrumentation is both stylish and practical. Dual zone climate controls let the driver and front passenger select their own level of comfort and the

in-dash CD players with MP3/iPod compatibility caters for all music tastes. Deep door pockets front and rear include integrated bottle holders and the clever use of an electronic handbrake means that there is more space between the front seats. The Outback 3.6R models make the driver's job even easier, with push start ignition plus smart key, rain sensing wipers and dusk sensing, self levelling Xenon headlights.

→ BE ENTERTAINED AT SUBARU.COM.AU

TOP TO BOTTOM:

- McIntosh entertainment system with a single CD/DVD player, 10 speakers, satellite navigation and rear view reverse camera - Outback 3.6R Premium.
- iPod/MP3 compatibility lets you take your favourite music with you.
- Steering wheel mounted audio and *Bluetooth*^{®1} controls.
- Multi-information in-dash satellite navigation system with single CD/DVD player and rear view reverse camera.
 - shown right - Outback 2.5i Premium and Outback 2.0D Premium.
 - shown left - Outback 2.5i.
- Single in-dash CD Player with rear view reverse camera, auxiliary jack and USB port - Outback 2.0D

1. *Bluetooth*[®] is a registered trademark of Bluetooth SIG Inc. System operation ability is subject to *Bluetooth*[®] wireless technology specification of individuals phone.



26° 82% 1200



Subaru

UNLEASH THE POWER

AFTER A WEEK CRUISING DOWN CITY MOTORWAYS, THE OUTBACK IS RESTLESS FOR ADVENTURE. SO TAKE IT OUT OF THE CITY AND TAKE IT OFF ROAD.

Fun to drive and with tenacious traction that grips through the corners, the Outback strikes the perfect balance between on-road comfort and off-road adventure. Responsive steering and handling are part of the package, while the electronic parking brake with hill

hold switch provides additional support and control. The smooth suspension has been tuned to Australian conditions and the Outback has the power to take on terrain that you haven't even discovered yet.

→ Choose the model and transmission to suit your driving style - six-speed manual, Lineartronic™ Continuously Variable Transmission (CVT) or five-speed automatic with Subaru Intelligent Drive (SI-DRIVE).

→ Outback 3.6R Premium features SI-DRIVE which regulates key engine functions to offer three distinctive driving modes in one car. Intelligent (I) mode for everyday, Sport (S) more for enhanced acceleration and all-round sporty performance or Sport Sharp (S#) mode for a thrilling drive.

→ **DISCOVER THE POWER AT SUBARU.COM.AU**

TOP TO BOTTOM:

- Steering wheel mounted cruise controls.
- Stylish, ergonomic instrument cluster.
- Subaru Intelligent Drive (SI-DRIVE) lets you choose your driving mode - Outback 3.6R Premium.
- Paddle gear shift on steering column (CVT and automatic models).





MODEL SHOWN: Outback 3.6R Premium



THINK OUTSIDE THE BOXER

SOLID. BRAVE. PROVEN. SUBARU'S BOXER ENGINE DESIGN LIES AT THE HEART OF THE OUTBACK. HOWEVER THE INNOVATION DOESN'T STOP THERE. EVERY INCH OF THE OUTBACK IS A TRIBUTE TO THE BOLDNESS OF SUBARU'S VISIONARY ENGINEERS.



→ Compact horizontally-opposed Boxer engine.

→ Outback 2.5i and Outback 2.5i Premium with four-cylinder SOHC petrol engine with intelligent Active Valve Lift System (i-AVLS).

→ Outback 3.6R Premium with six-cylinder DOHC petrol engine with Dual Active Valve Control System.

→ Outback 2.0 Diesel and Outback 2.0 Diesel Premium with turbocharged, four-cylinder DOHC diesel engine.

→ Electronic Throttle Control (ETC).

Consistent across the Outback range is the famous Subaru Boxer engine that has been designed to sit lower and flatter in the engine bay than traditional engines. Due to this unique positioning it delivers less noise and vibration to the cabin, while the lowered centre of gravity improves stability, cornering and traction with the road. Coupled with the Outback's symmetrical drivetrain, this configuration delivers superior handling confidence, better balance, smoothness and ultimately, outstanding driver enjoyment.

The intelligent drive systems incorporated into the Outback include ETC which seamlessly translates commands from the driver's right foot to automatically select the optimum throttle position for an effortless performance. The ETC system also considers the environment, optimising exhaust gas emissions and fuel economy.

Each petrol engine in the Outback range has also been finely tuned to deliver optimum fuel economy, power and torque, via Subaru's Dual Active Valve Control System or intelligent Active Valve Lift System.

→ GET THE FACTS AT SUBARU.COM.AU

GO FURTHER, DO MORE



FILL UP AND PULL OUT. LEAVE THE LAST ROADHOUSE IN YOUR DUST. WITH A FULL TANK UNDER ITS BELT, THE OUTBACK DIESEL IS READY TO ESCAPE. THE GRUNTY PERFORMANCE AND LEGENDARY FUEL ECONOMY ALL ADD UP TO A DIESEL THAT'S ALL 4 THE DRIVER.™

Whether you're exploring this wide brown land or roaring down the freeway, the turbocharged horizontally-opposed Boxer diesel engine means less stops and more fun. With outstanding fuel economy, and an extraordinary driving range, the Outback is capable of travelling over 1,000km¹ on a single tank. All while caring for the environment, by meeting EURO5 emissions standards.

The four-cylinder Double OverHead Cam engine delivers a spirited performance with strong pulling power, while the six-speed manual transmission lets you effortlessly select the right gear for the situation. With its distinctive bonnet scoop, the sporty Outback Diesel comes in two variants including standard Outback 2.0D and Outback 2.0D Premium.

→ GO THE DISTANCE AT SUBARU.COM.AU

1. Based on a highway cycle of 5.6L per 100km and fuel capacity of 65L tested in accordance with a ADR81/02.





OUTBACK



MODEL SHOWN: Outback 2.5i Premium



ALL WHEELS, ALL OF THE TIME

SCIENTIFICALLY CONCEIVED.
RIGOROUSLY TESTED FOR THE
LAST 40 YEARS. SUBARU'S ICONIC
SYMMETRICAL ALL-WHEEL DRIVE
SYSTEM IS THE PINNACLE OF
SUPERIOR JAPANESE TECHNOLOGY.
TECHNOLOGY THAT SETS YOU FREE.



CONFIDENCE UNDER ALL CONDITIONS

The sign of a true performer, is good balance. And when it comes to driving a Subaru, superior balance equals superior vehicle control. That's why Subaru has built its reputation on its Symmetrical All-Wheel Drive (SAWD) system and a symmetrical drivetrain that deliver an innate sense of balance from the ground up.

SAWD delivers engine power to all four wheels simultaneously. Having power distributed across all four wheels, rather than two on conventional vehicles, gives you twice the grip capacity. So under acceleration there's more grip for cornering and more capacity to keep on track through the corners. Ultimately, having the driving force

spread across all four wheels means greater control and confidence under all conditions.

The traction and control delivered by SAWD is further enhanced by the Outback's suspension. The wide track front suspension produces more responsive steering and cornering, while the self-levelling double wishbone rear suspension ensures a consistent ride height and adjusts automatically depending on the cargo load.

For you, the driver, it all adds up to an agile and responsive vehicle with optimum balance, control and confidence in a variety of driving conditions.

→ FIND OUT MORE ABOUT SAWD AT [SUBARU.COM.AU](https://www.subaru.com.au)

SAFETY AS ACTIVE AS YOU

THE LIFE YOU'VE LONGED FOR IS ACTIVE, ADVENTUROUS, UNPREDICTABLE. THE BEST TIMES ARE OFTEN THOSE THAT HAPPEN, WHEN NOTHING'S PLANNED. THAT'S BECAUSE SUBARU HAS PLANNED EVERYTHING FOR YOU. BUILDING ACTIVE AND PASSIVE SAFETY INTO EVERY ASPECT OF YOUR OUTBACK.



CRUNCH TIME

Because you never know what's around the corner, Subaru have made safety an integral part of every vehicle. By incorporating the very latest safety technology, every vehicle in the Subaru range proudly carries the maximum five-star ANCAP* crashworthiness rating for occupant safety. The ring-shaped passenger cell is made from high-tensile strength steel, which directs impact energy around the passenger compartment, not through it.

Thanks to Subaru's electronic driver assist system, called Vehicle Dynamics Control (VDC), a range of stability and braking technologies step in to maintain safety in extreme situations. By automatically acting on information transmitted from a sophisticated array of sensors, the factors influencing the Outback's stability are constantly monitored to help the driver stay in control.

Subaru Vehicle Dynamics Control incorporates:

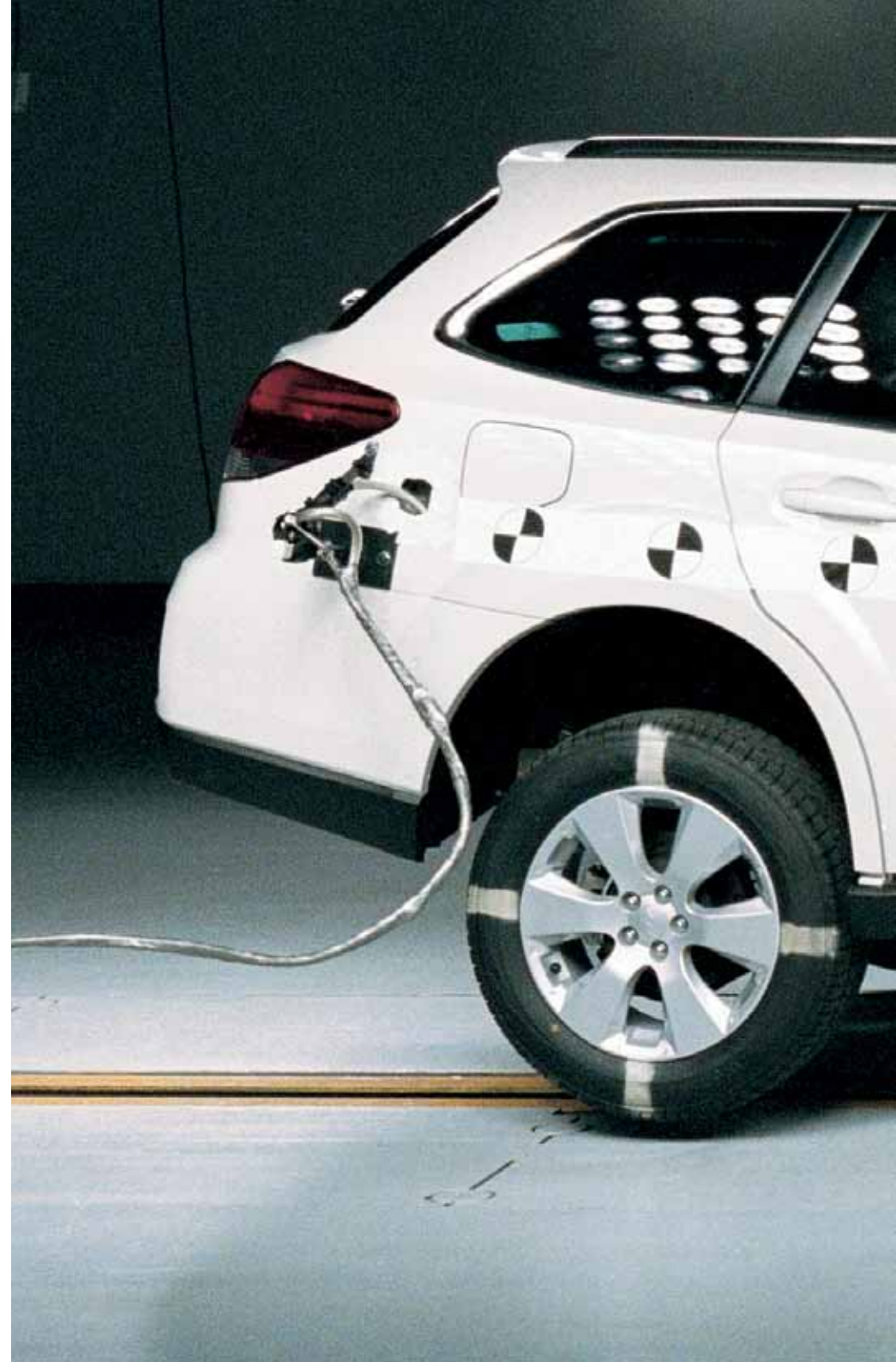
- Electronic Stability Control (ESC).
- Traction Control System (TCS).
- TCS Limited Slip Device (LSD).
- Anti-lock Braking System (ABS).
- Electronic Brakeforce Distribution (EBD).
- Brake Assist.

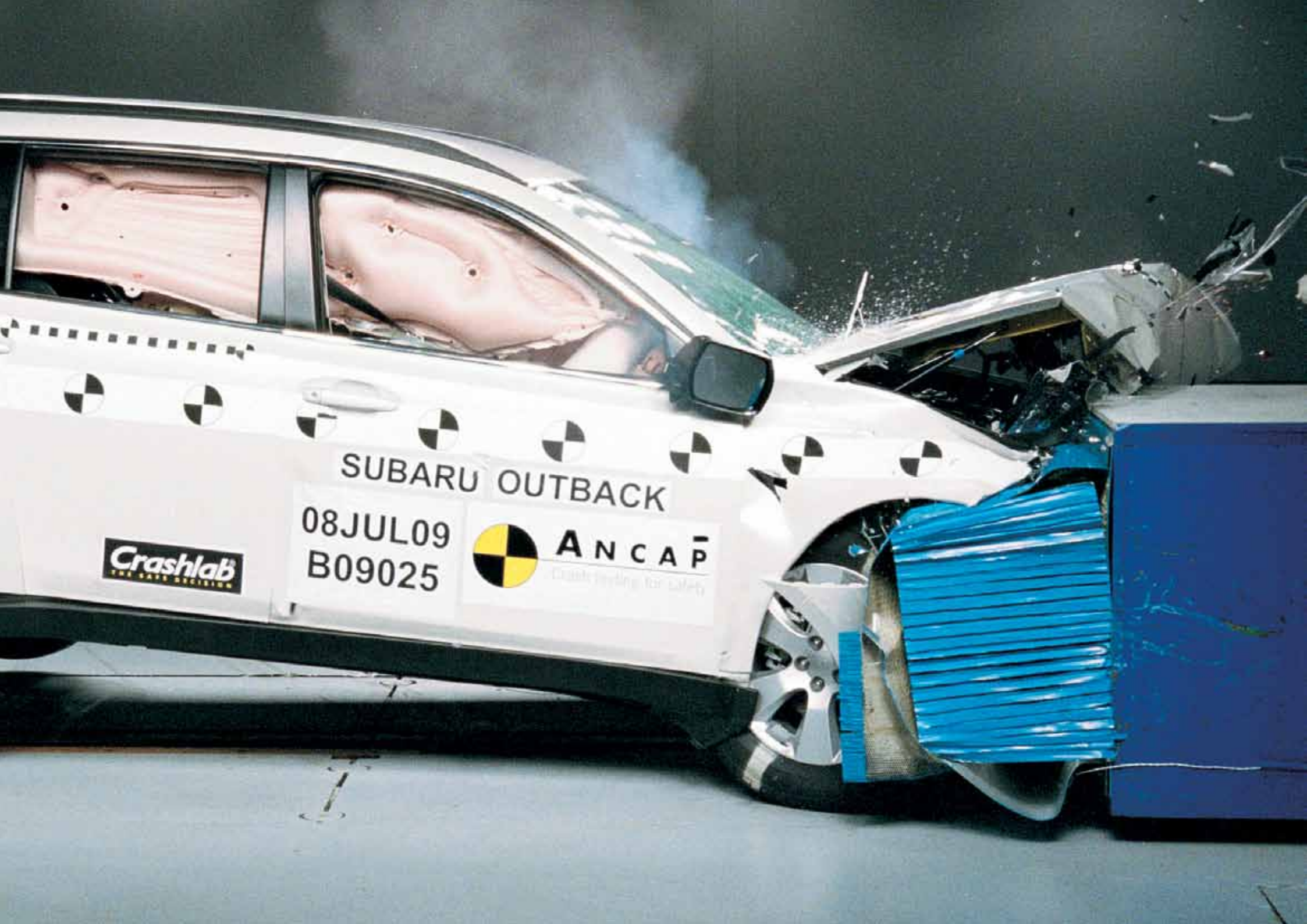
Active safety features on the Outback are complemented by an optimum blend of passive safety, designed to enhance driver and passenger protection:

- The Boxer engine sits low in the engine bay to help protect occupants by sliding below the cabin - not into it - in the event of a severe frontal collision.
- Ring-shaped passenger safety cell combines rigid reinforced sections with crumple zones designed to absorb impact energy and reduce injury.
- Seven SRS airbags - dual front, dual front side, curtain and driver's knee airbags.
- Front seatbelts feature pretensioners and load limiters.
- Automatic Emergency Locking Retractors on all rear seatbelts.
- Height adjustable headrests throughout the cabin.
- Rear view reverse camera.

→ READ ABOUT SUBARU SAFETY TECHNOLOGIES AT SUBARU.COM.AU

*Australasian New Car Assessment Program.





SUBARU OUTBACK

08JUL09
B09025

Crashlab
THE SAFE DECISION



ANCAP
Counting for safety



MODEL SHOWN: Outback 3.6R Premium

EYE SPY

YOU CATCH A FLEETING VISION IN
YOUR MIND'S EYE. IS IT INTUITION?
A PREMONITION? OR IS IT SUBARU
EYESIGHT – DRIVER ASSIST
TECHNOLOGY DESIGNED TO ACT LIKE
A SECOND PAIR OF EYES.



EYESIGHT - DRIVER ASSISTANCE VISION



Subaru's renowned technologies now include a new 'driver assist system' called EyeSight. EyeSight is a second pair of eyes that monitors the road ahead and recognises potentially dangerous driving situations. Using three-dimensional images captured by cameras mounted at the top of the front windscreen, EyeSight provides audible and visual warnings to prompt the driver to take action. Apart from these built-in driver alert functions, EyeSight will also apply automatic braking intervention, when necessary, to help avoid or reduce the severity of a detected frontal collision.

EyeSight driver assist features include:

- **PRE-COLLISION BRAKING** provides automatic braking to help avoid or reduce the severity of detected frontal accident impacts. Should the driver be distracted, or just not register the risk of a collision, braking will be automatically applied when a potential frontal collision is recognised by EyeSight.
- **PRE-COLLISION BRAKE ASSIST** recognises a potential frontal impact, alerts the driver and assists the driver by applying full braking force in a detected emergency-braking situation.
- **PRE-COLLISION THROTTLE MANAGEMENT** reduces available acceleration in situations where the system detects objects in front of the vehicle which the vehicle is likely to impact. The engine output is restricted to reduce the possible impact force and frontal impact damage, and to help prevent injury should the driver mistakenly accelerate when an object directly in front of the car is recognised by EyeSight.
- **ADAPTIVE CRUISE CONTROL** maintains the speed set by the driver, but also regulates the vehicle's speed in order to maintain a set distance from the car in front. The driver can select from three different distances, based on time and speed, and then the EyeSight system will automatically use braking and monitoring technologies to regulate the vehicle's speed in line with the traffic flow.
- **LANE SWAY AND DEPARTURE WARNING** monitors the vehicle's position within the road lane markings and sounds a warning to the driver when it recognises the potential for the vehicle to unintentionally move out of its lane, or when swaying within the lane, is recognised by EyeSight.
- **LEAD VEHICLE START ALERT** prompts the driver that the vehicle in front is moving away, after being stopped. This effectively alerts the driver, if their vehicle does not start moving, that the traffic ahead is moving again.

EyeSight works with Subaru's acclaimed collision avoidance and collision protection technologies, working together to provide improved protection for you and your family.

While EyeSight can assist drivers in avoiding or reducing the severity of a detected frontal collision, there is naturally no substitute for driver vigilance, awareness and responsibility. EyeSight will see and recognise most objects within its field of vision, however its accuracy may be affected by external conditions and it should not be relied on to detect every potential road traffic hazard.

TO SEE HOW EYESIGHT WORKS, VISIT SUBARU.COM.AU TO WATCH THE VIDEO DEMONSTRATIONS. OR FOR ALL OF THE FINE DETAIL, PLEASE REFER TO THE OWNER'S MANUAL.

OUR SERVICE PROMISE

WE ARE ALL BORN FREE BUT STAYING FREE,
THAT'S THE HARD PART.

ONCE YOU GET USED TO GOING ANYWHERE
- AND DOING ANYTHING -
YOU CAN NEVER GO BACK.

THAT FREEDOM IS SOMETHING YOU NEED TO HOLD
ON TO. SOMETHING TO GRAB WITH BOTH HANDS.

REMEMBER - YOU STILL HAVE CORNERS,
COUNTRIES, AND CONTINENTS TO CONQUER.

WE ARE YOUR GUARDIANS OF FREEDOM.
THIS IS YOUR PRIDE AND JOY.
LOVE IT, LOOK AFTER IT AND IT'LL
LOOK AFTER YOU IN RETURN.

IT TOOK THE FINEST MINDS IN JAPAN
TO BUILD THIS INCREDIBLE VEHICLE.
WHY LET JUST ANYONE TINKER WITH IT?

ENTRUST IT ONLY TO THOSE YOU TRUST MOST.

YOU CAN'T PUT A PRICE ON FREEDOM.
BUT CONFIDENCE IS SURPRISINGLY AFFORDABLE.





WE WILL PROTECT YOUR FREEDOM.

TAKE TO THE ROAD WITH THE KNOWLEDGE THAT YOU HAVE
THE EXPERIENCE AND SUPPORT OF SUBARU BEHIND YOU.

SUBARU GENUINE SERVICE

Entrust your Subaru only to those who know it best. They are the Subaru technicians who are passionate about maintaining your freedom and who train year after year until they know your vehicle inside out. Using specialist diagnostic equipment and Subaru Genuine Parts, they are committed to keeping your Subaru **performing** at its best. Delivering freedom from worry, while ensuring the **safety** of your family and the long-term **retained value** of your vehicle.

SUBARU NEW CAR WARRANTY - THREE YEARS / UNLIMITED KILOMETRES

Whether you're off the beaten track or cruising the open highway, you can rest assured knowing that your new Subaru is covered by a three year unlimited kilometre manufacturer's national warranty. That's three full years of worry free driving! For full details and our latest new car warranty information, visit subaru.com.au/service/warranty. But why stop there, when you're sure to have your Subaru for much longer? Protect your investment by purchasing an additional two year Subaru Assured New Vehicle Warranty. Ask your Subaru Retailer for more information.

SUBARU ASSURED USED VEHICLES

Owning a Subaru that has already traversed highways and byways is like travelling with an old friend. Every Subaru Assured Used Vehicle has passed a 116-point quality inspection and comes with a one year unlimited kilometre Subaru Assured Warranty - to complement the balance of a new vehicle warranty or the statutory warranty that remains - from participating Subaru Assured Retailers.

SUBARU PREFERRED COLLISION REPAIRER NETWORK

When you take the road less travelled, you're going to get wet and you're going to get dirty. But should you put a dent in your freedom, there is a dedicated Subaru Preferred Collision Repairer helpline available on 1800 737 179, 24-hours a day, seven days a week. Plus the national network of appointed Subaru Preferred Collision Repairers, can return your Subaru to its former glory.

DATADOT^{DNA}

Every Subaru is fitted with advanced engine immobilisers and DATADOT^{DNA} technology. Approximately 7,000 microscopic dots are laser-etched with your vehicle's unique Vehicle Identification Number - making your Subaru a much less attractive target for potential thieves. In fact, provided you meet certain terms and conditions (such as a requirement that the vehicle is properly registered and comprehensively insured at the time of theft) DATADOT^{DNA} will even pay your insurance excess (up to a maximum of \$800 incl GST) should your new Subaru be stolen in the first year of ownership and the vehicle is not recovered despite the presence of DATADOT^{DNA} and warning labels¹.

1. Claims must be received from the vehicle's registered owner within 45 days of the theft accompanied by a police report in relation to the theft and proof that the insurer has fully paid out the claim.

SUBARU FINANCE

Relax with Subaru Finance and enjoy your freedom faster with our range of personalised and affordable financial solutions to approved customers. Our finance specialists will help you find a finance package that is tailored to your individual needs - quickly and conveniently. So let Subaru Finance do the work for you, it's what we do best.

SUBARU INSURANCE

Freedom is limitless. So why keep your car in the garage? Explore your freedom, but also protect it. There is a range of Subaru Insurance options that offer features and benefits to complement your Subaru, including:
→ Subaru Comprehensive Motor Vehicle Insurance
→ Subaru Motor Equity Insurance
→ Subaru Loan Protection Insurance

SUBARU LIFESTYLE

You wear your freedom like a badge of honour and now you can embrace all things Subaru with our range of quality merchandise. To see the entire Subaru merchandise range, visit shop.subaru.com.au, or ask your local authorised Subaru Retailer.

BEING A SUBARU OWNER COMES WITH MANY GREAT BENEFITS.
VISIT SUBARU.COM.AU TO SEE THE BENEFITS AVAILABLE TO YOU.

OUTBACK AWARDS

- 2009
- Australia's Best Cars, Best Recreational 4WD, Subaru Outback 2.5i
 - Fairfax Drive Car of the Year 2009, Best SUV under \$40,000, Subaru Outback
 - Australasian New Car Assessment Program (ANCAP)
five-star occupant safety rating for the entire Outback range

subaru.com.au

Subaru (Aust) Pty Limited ABN 95 000 312 792 (Subaru Australia)
Level 3, 4 Burbank Place, Baulkham Hills NSW 2153. Toll Free: 1800 226 643
Subaru Australia reserves the right to vary vehicle specifications and standard features in Australia from those detailed in this brochure.
Vehicles shown in this brochure may be fitted with accessories available at additional cost.
No part of the brochure can be reproduced without written permission from Subaru Australia. Printed in Australia.
© Copyright 2011 - Subaru (Aust) Pty Limited. All rights reserved.

ALL 4 THE DRIVER™



SUBARU

OUTBACK

SPECIFICATIONS | MODEL YEAR 2012



ALL 4 THE DRIVER™



SUBARU

KEY FEATURES

OUTBACK 2.5i



PERFORMANCE

- Symmetrical All-Wheel Drive
- Engine: 2.5-litre horizontally-opposed Boxer engine
- Transmission: 6-speed manual or Lineartronic™ CVT with manual mode
- Maximum power output: 123kW@5600rpm
- Maximum torque: 229Nm@4000rpm

EXTERIOR

- Front fog lights
- Rear spoiler

- 213mm ground clearance
- 17" alloy wheels

INTERIOR

- Air-conditioning - dual zone climate control
- Blue interior illumination
- Leather steering wheel
- Seat trim - black cloth
- Steering wheel audio, cruise and *Bluetooth*^{®1} controls

ENTERTAINMENT / TECHNOLOGY

- Multi-information in-dash satellite navigation system featuring:
 - AM/FM radio
 - MP3/WMA/iPod compatible
 - 6 speakers
 - Single CD/DVD² player
 - 7" touch screen
- *Bluetooth*^{®1} wireless technology with:
 - Handsfree mobile communication
 - Audio streaming³
 - Voice command recognition
- Rear view reverse camera

OUTBACK 2.5i PREMIUM



PERFORMANCE

- Symmetrical All-Wheel Drive
- Engine: 2.5-litre horizontally-opposed Boxer engine
- Transmission: 6-speed manual or Lineartronic™ CVT with manual mode
- Maximum power output: 123kW@5600rpm
- Maximum torque: 229Nm@4000rpm

EXTERIOR

- Electric sunroof
- Front fog lights
- Rear spoiler

- 213mm ground clearance
- 17" alloy wheels

INTERIOR

- Air-conditioning - dual zone climate control with rear vents
- Blue interior illumination
- Leather steering wheel
- Seat trim - black leather⁴
- Steering wheel audio, cruise and *Bluetooth*^{®1} controls
- 8-way power seat with dual memory - driver

ENTERTAINMENT / TECHNOLOGY

- Multi-information in-dash satellite navigation system featuring:
 - AM/FM radio
 - MP3/WMA/iPod compatible
 - 6 speakers
 - Single CD/DVD² player
 - 8" touch screen
- *Bluetooth*^{®1} wireless technology with:
 - Handsfree mobile communication
 - Audio streaming³
 - Voice command recognition
- Rear view reverse camera

OUTBACK 2.0D



PERFORMANCE

- Symmetrical All-Wheel Drive
- Engine: 2.0-litre turbocharged horizontally-opposed Boxer diesel engine
- Transmission: 6-speed manual
- Maximum power output: 110kW@3600rpm
- Maximum torque: 350Nm@1800-2400rpm

EXTERIOR

- Bonnet scoop
- Front fog lights
- Rear spoiler
- 213mm ground clearance
- 17" alloy wheels

INTERIOR

- Air-conditioning - dual zone climate control
- Blue interior illumination
- Leather steering wheel
- Seat trim - black cloth
- Steering wheel audio, cruise and *Bluetooth*^{®1} controls

ENTERTAINMENT / TECHNOLOGY

- Single in-dash CD player featuring:
 - AM/FM radio

- MP3/WMA/iPod compatible
- 6 speakers
- 4.3" LCD² display screen
- *Bluetooth*^{®1} wireless technology with:
 - Handsfree mobile communication
 - Audio streaming³
 - Voice command recognition
- Rear view reverse camera

OUTBACK 2.0D PREMIUM



PERFORMANCE

- Symmetrical All-Wheel Drive
- Engine: 2.0-litre turbocharged horizontally-opposed Boxer diesel engine
- Transmission: 6-speed manual
- Maximum power output: 110kW@3600rpm
- Maximum torque: 350Nm@1800-2400rpm

EXTERIOR

- Bonnet scoop
- Electric sunroof
- Front fog lights
- Rear spoiler
- 213mm ground clearance
- 17" alloy wheels

INTERIOR

- Air-conditioning - dual zone climate control
- Blue interior illumination
- Leather steering wheel
- Seat trim - black leather⁴
- Steering wheel audio, cruise and *Bluetooth*^{®1} controls
- 8-way power seat with dual memory - driver

ENTERTAINMENT / TECHNOLOGY

- Multi-information in-dash satellite navigation system featuring:

- AM/FM radio
- MP3/WMA/iPod compatible
- 6 speakers
- Single CD/DVD⁵ player
- 8" touch screen
- *Bluetooth*^{®1} wireless technology with:
 - Handsfree mobile communication
 - Audio streaming³
 - Voice command recognition
- Rear view reverse camera

OUTBACK 3.6R PREMIUM



PERFORMANCE

- Symmetrical All-Wheel Drive
- Engine: 3.6-litre horizontally opposed Boxer engine
- Transmission: 5-speed automatic with manual mode
- Maximum power output: 191kW@5600rpm
- Maximum torque: 350Nm@4400rpm
- Subaru Intelligent Drive (SI-DRIVE)

EXTERIOR

- Dusk sensing headlights
- Electric sunroof
- Front fog lights
- Rear spoiler
- Self-levelling low beam Xenon headlights
- 213mm ground clearance
- 17" alloy wheels

INTERIOR

- Blue interior illumination
- Air-conditioning - dual zone climate control with rear vents

- Leather steering wheel
- Rain sensing front windscreen wipers
- Seat trim - black or ivory leather⁴
- Smart key with push start ignition
- Steering wheel audio, cruise and *Bluetooth*^{®1} controls
- 8-way power seat - driver and front passenger
 - driver with dual memory

ENTERTAINMENT / TECHNOLOGY

- McIntosh entertainment system featuring:
 - Built-in multi-information in-dash satellite navigation system

- AM/FM radio
- MP3/WMA/iPod compatible
- 10 speakers
- Single CD/DVD⁵ player
- 8" touch screen
- *Bluetooth*^{®1} wireless technology with:
 - Handsfree mobile communication
 - Audio streaming³
 - Voice command recognition
- Rear view reverse camera
- EyeSight™ technology

1. *Bluetooth*[®] is a registered trademark of Bluetooth SIG Inc. System operation ability is subject to the *Bluetooth*[®] wireless technology specification of individual's phone. 2. Information display and operation ability is subject to compatibility of the *Bluetooth*[®] audio device to AVCRP and some functions may be restricted. 3. There may be restrictions on features available for certain models that are not fully compliant with AVCRP. 4. Some parts of the seating are not full natural leather. 5. DVD only operates when vehicle is stationary.

TECHNICAL SPECIFICATIONS¹ - OUTBACK RANGE

MODEL		2.5i	2.5i Premium	3.6R Premium	2.0 Diesel	2.0 Diesel Premium
TRANSMISSION						
6-speed manual transmission		•	•		•	•
Lineartronic™ CVT with manual mode		•	•			
5-speed automatic transmission with manual mode				•		
ENGINE						
Engine type		Horizontally-opposed Boxer 4-cylinder, petrol engine		Horizontally-opposed Boxer 6-cylinder, petrol engine	Turbocharged Horizontally-opposed Boxer 4-cylinder, diesel engine	
Valve mechanism		SOHC with i-AVLS		DOHC with Dual AVCS	DOHC	
Bore x stroke	mm	99.5 x 79.0		92 x 91	86 x 86	
Capacity	cc	2457		3630	1998	
Compression ratio		10		10.5	16	
Fuel tank capacity	litres			65		
Fuel system		Multi point sequential injection			Common rail direct injection	
Fuel requirement	RON	90-95			Diesel	
PERFORMANCE²						
Maximum power output (DIN)	kW/rpm	123kW@5600rpm		191kW@5600rpm	110kW@3600rpm	
Maximum torque (DIN)	Nm/rpm	229Nm@4000rpm		350Nm@4400rpm	350Nm@1800-2400rpm	
Acceleration ³ 0 - 100 km/h	seconds	9.6 (MT) / 10.4 (CVT)		7.6	9.7	
Electronic Throttle Control system (ETC)		Drive-by-wire				
Fuel consumption (ADR81/02) ⁴ combined	l/100km	8.9 (MT) / 8.3 (CVT)		10.3	6.0	
	urban	12 (MT) / 11.2 (CVT)		14.7	7.3	
	extra urban	7.1 (MT) / 6.6 (CVT)		7.6	5.3	
CO ₂ emissions (ADR81/02) combined	(g/km)	209 (MT) / 193 (CVT)		242	158	
Emission standards		EURO4 (MT) / EURO5 (CVT)		EURO4	EURO5	
SYMMETRICAL ALL-WHEEL DRIVE						
Type	Manual	Centre Differential with a Viscous Limited Slip Differential		n/a	Centre Differential with a Viscous Limited Slip Differential	
Type	Auto	Active Torque Split		Variable Torque Distribution	n/a	
TRANSMISSION						
Gear ratio	1st	3.454 (MT) / 3.525 (CVT)		3.540	3.454	
	2nd	1.947 (MT) / Continuously variable (CVT)		2.264	1.75	
	3rd	1.296 (MT) / Continuously variable (CVT)		1.471	1.062	
	4th	0.972 (MT) / Continuously variable (CVT)		1.000	0.785	
	5th	0.825 (MT) / Continuously variable (CVT)		0.834	0.634	
	6th	0.695 (MT) / 0.558 (CVT)		n/a	0.557	
Gear ratio - reverse		3.636 (MT) / 2.358 (CVT)		2.370	3.636	
Final reduction gear ratio		4.444 (MT) / 3.9 (CVT)		3.083	4.444	
STEERING						
Steering		Engine speed sensitive power assisted rack and pinion			Electric power steering	
Minimum turning circle (kerb to kerb)	m	11				
SUSPENSION						
Type	Front	McPherson strut type, independent suspension				
	Rear	Self-Levelling double wishbone type, independent suspension				
BRAKES						
Type	Front	Ventilated disc brake				
	Rear	Solid disc brake		Ventilated disc brake	Solid disc brake	
Brake booster type		Tandem				
ABS		4-channel, 4-sensor ABS with Electronic Brakeforce Distribution				
WHEELS AND TYRES						
Tyre manufacturer		Yokohama				
Tyres (width, profile, size, load index & speed rating)		225/60 R17 99V				
Rim size		17x7JJ				
Wheels		17"				
Spare wheel		17"				
MEASUREMENT						
Overall length	mm	4790				
Overall width	mm	1820				
Overall height	mm	1615				
Wheel base	mm	2745				
Front track	mm	1535				
Rear track	mm	1535				
Minimum ground clearance ⁵	mm	213				
Cargo volume - rear seat up/down	litres	490 / 1690				
Tare mass ⁶	kg	1465 (MT) / 1505 (CVT)	1485 (MT) / 1525 (CVT)	1600	1551	1572
Seating capacity		5				
TOWING						
With trailer brakes	kg	1500		1800	1700	
Without trailer brakes	kg	750				
Maximum tow ball down load	kg	150		180	170	

1. Subaru Australia reserves the right to change mechanical specification and equipment levels without notice. 2. All performance data measured using 95RON as required by Australian Design Rule 81/02. Vehicles tested in accordance with ADR 81/02. 3. Acceleration test performed under controlled conditions. 4. Fuel consumption figures calculated in accordance with Australian Design Rule 81/02. 5. Ground clearance at kerb weight. 6. Vehicle kerb weight and tare mass varies according to the types of optional equipment included.

MODEL FEATURE SPECIFICATIONS¹ - OUTBACK RANGE

MODEL	2.5i	2.5i Premium	3.6R Premium	2.0 Diesel	2.0 Diesel Premium
TRANSMISSION					
6-speed manual transmission	•	•		•	•
Lineartronic™ CVT	•	•			
5-speed automatic transmission			•		
SAFETY RATING					
ANCAP ² occupant safety rating (maximum 5)	5-Star	5-Star	5-Star	5-Star	5-Star
COLLISION AVOIDANCE					
Symmetrical All-Wheel Drive (SAWD)	•	•	•	•	•
Vehicle Dynamics Control system (VDC) featuring:	•	•	•	•	•
Electronic Stability Control (ESC)	•	•	•	•	•
Anti-lock Braking System (ABS)	•	•	•	•	•
Electronic Brakeforce Distribution (EBD)	•	•	•	•	•
Brake Assist	•	•	•	•	•
Traction Control System (TCS)	•	•	•	•	•
TCS Limited Slip Device	•	•	•	•	•
4-wheel disc brakes	•	•	•	•	•
Electronic parking brake with hill hold switch	•	•	•	•	•
Rear view reverse camera	•	•	•	•	•
COLLISION PROTECTION					
SRS ³ airbags - dual front, dual front side and curtain	•	•	•	•	•
SRS ³ airbags - knee airbag (driver)	•	•	•	•	•
Front seat belts with pretensioners and load limiters	•	•	•	•	•
3 point A/ELR rear seat belts	•	•	•	•	•
Height adjustable seat belt anchors - driver and front passenger	•	•	•	•	•
Seat belt warning lights - all seats	•	•	•	•	•
Whiplash reduction seats	•	•	•	•	•
Rear seat headrests for 3 seating positions	•	•	•	•	•
Height adjustable front seat headrests	•	•	•	•	•
Height adjustable rear seat headrests	•	•	•	•	•
Safety pedals - brake, clutch / footrest (A/T)	•	•	•	•	•
Ring-shaped passenger safety cell	•	•	•	•	•
CHILD SAFETY					
Child seat anchor points (x3)	•	•	•	•	•
Rear door child locks	•	•	•	•	•
INTELLIGENT DRIVING DYNAMICS					
Subaru Intelligent Drive (SI-DRIVE)			•		
EyeSight™ featuring:			•		
Adaptive cruise control			•		
Lane departure warning			•		
Lane sway warning			•		
Lead vehicle start alert			•		
Pre-collision brake			•		
Pre-collision brake assist			•		
Pre-collision throttle management			•		
Electronic Throttle Control system (ETC)	•	•	•	•	•
Self-levelling rear suspension	•	•	•	•	•
EXTERIOR					
Body coloured mirrors and door handles	•	•	•	•	•
Bonnet scoop				•	•
Bonnet with gas struts	•	•	•	•	•
Black under body bumper cover (front and rear)	•	•	•	•	•
Chrome coloured window sills	•	•	•	•	•
Detachable module type windscreen wipers	•	•	•	•	•
Door mirrors with indicators	•	•	•	•	•
Dual tail pipe			•		
Electric sunroof		•	•		•
Engine cover			•	•	•
Front windscreen and front door glass	UV Green	UV Green	UV Green	UV Green	UV Green
Fuel cap - tethered	•	•	•	•	•
Full size spare wheel	•	•	•	•	•
Rear door, rear quarter and rear windscreen glass	Privacy Glass	Privacy Glass	Privacy Glass	Privacy Glass	Privacy Glass
Rear spoiler	•	•	•	•	•
Rear window wiper	•	•	•	•	•
Roof rails	•	•	•	•	•
Side cladding	•	•	•	•	•
17" alloy wheels	•	•	•	•	•
LIGHTING - EXTERIOR					
Front fog lights	•	•	•	•	•
Headlights - halogen with auto off	•	•		•	•
Headlights - dusk sensing			•		
Headlights - self-levelling Xenon low beam with auto off			•		
Rear bumper reflector(s)	•	•	•	•	•
Rear LED stoplight	•	•	•	•	•

MODEL	2.5i	2.5i Premium	3.6R Premium	2.0 Diesel	2.0 Diesel Premium
LIGHTING - INTERIOR					
Blue interior illumination	•	•	•	•	•
Cabin and cargo area lights	•	•	•	•	•
Illuminated ignition ring	•	•	•	•	•
Map lights (x2)	•	•	•	•	•
AIR-CONDITIONING					
Air-conditioning - dual zone climate control	•			•	•
Air-conditioning - dual zone climate control with rear vents		•	•		
Anti-dust filter	•	•	•	•	•
Front and side demisters	•	•	•	•	•
Heater ducts for rear passengers	•	•	•	•	•
Rear windscreen demister electric with timer	•	•	•	•	•
SECURITY					
DataDot security system	•	•	•	•	•
Immobiliser security system	•	•	•	•	•
Vehicle pre-wired for alarm system installation	•	•	•	•	•
INSTRUMENTATION AND CONTROLS					
Adjustable steering wheel - height and telescopic	•	•	•	•	•
Hazard warning indicators	•	•	•	•	•
Instrument cluster ⁴	•	•	•	•	•
Multi-information display ⁵	•	•	•	•	•
Manual mode (automatic transmission and CVT)	CVT	CVT	•		
Paddle gear shift on steering column	CVT	CVT	•		
Steering wheel audio controls	•	•	•	•	•
Steering wheel cruise controls	•	•	•	•	•
Steering wheel Bluetooth ^{®6} controls	•	•	•	•	•
Steering wheel EyeSight™ controls	•	•	•	•	•
Twin trip meter (switchable)	•	•	•	•	•
STORAGE					
Cargo luggage hooks	•	•	•	•	•
Centre console box	•	•	•	•	•
Cupholders - centre console	With lid	With lid	With lid	With lid	With lid
Cupholders - rear	•	•	•	•	•
Door pockets with integrated bottle holder - front and rear	•	•	•	•	•
Front centre tray	•	•	•	•	•
In-dash console box	•	•	•	•	•
Overhead console - sunglass holder	•	•	•	•	•
Pull-out cargo area tie down points	•	•	•	•	•
Retractable cargo security blind	•	•	•	•	•
Seat back nets - driver and front passenger	•	•	•	•	•
Tool kit	•	•	•	•	•
CONVENIENCE					
12v/120W power jacks (x2)	•	•	•	•	•
Boot/tailgate auto unlock on remote central locking keys	•	•	•	•	•
Driver's footrest	•	•	•	•	•
Illuminated sunvisor with vanity mirrors - driver and front passenger	•	•	•	•	•
Interior fuel lid lock release	•	•	•	•	•
Intermittent variable speed front windscreen wipers	•	•	•	•	•
Rain sensing front windscreen wipers	•	•	•	•	•
Power mirrors and windows	•	•	•	•	•
Power steering	•	•	•	•	•
Rear seat centre armrest	•	•	•	•	•
Rear view mirror	•	•	•	•	•
Remote central locking	•	•	•	•	•
Remote central locking keys (x2)	•	•	•	•	•
Smart key and push-start ignition	•	•	•	•	•
INTERIOR TRIMS					
Cargo area carpet colour - wagon and SUV models	Black	Black	Black	Black	Black
Carpet trim - black	•	•	•	•	•
Chrome side step plate	•	•	•	•	•
Gear shift	Leather (MT) / Matt Silver (AT)	Leather (MT) / Matt Silver (AT)	Matt Silver	Leather	Leather
Leather steering wheel	•	•	•	•	•
Seat trim - cloth	•	•	•	•	•
Seat trim - leather ⁷	•	Perforated Seat Inserts	Perforated Seat Inserts	•	Perforated Seat Inserts
Seat trim colour - black	•	•	•	•	•
Seat trim colour - ivory	•	•	•	•	•
SEATING EXTRAS					
60/40 split folding rear seats	•	•	•	•	•
8-way power seat - driver	•	•	•	•	•
8-way power seat - front passenger	•	•	•	•	•
8-way power seat with dual memory - driver	•	•	•	•	•
Electric lumbar support - driver	•	•	•	•	•
Manual seat height lifter - driver	•	•	•	•	•
One touch lever folding rear seats	•	•	•	•	•
Reclining rear seat	•	•	•	•	•

MODEL	2.5i	2.5i Premium	3.6R Premium	2.0 Diesel	2.0 Diesel Premium
ENTERTAINMENT					
Single in-dash CD player featuring:				•	
AM/FM radio				•	
6 speakers				•	
MP3/WMA/iPod compatible				•	
4.3" LCD ⁹ display screen				•	
Multi-information in-dash satellite navigation system featuring:	•	•			•
AM/FM radio	•	•			•
MP3/WMA/iPod compatible	•	•			•
Single CD/DVD ⁹ player	•	•			•
6 speakers	•	•			•
7" touch screen	•				
8" touch screen		•			•
McIntosh entertainment system featuring:			•		
Built in multi-information in-dash satellite navigation system			•		
AM/FM radio			•		
MP3/WMA/iPod compatible			•		
Single CD/DVD ⁹ player			•		
10 speakers			•		
8" touch screen			•		
Bluetooth [®] wireless technology with:	•	•	•	•	•
Handsfree mobile communication	•	•	•	•	•
Audio streaming ¹⁰	•	•	•	•	•
Voice command recognition	•	•	•	•	•
Auxiliary jack ¹¹ - front centre console				•	
USB connection ¹¹ - front centre console	•			•	
RCA jacks ¹² (with factory fitted satellite navigation)		•	•		•
WARRANTY					
3 year/unlimited km warranty	•	•	•	•	•

1. Subaru Australia reserves the right to change mechanical specification and equipment levels without notice. 2. The Australasian New Car Assessment Program (ANCAP) gives consumers consistent information on the level of occupant protection provided by vehicles in serious front and side crashes. 3. SRS: Supplemental Restraint System. Effective when used in conjunction with seat belts. 4. Instrument cluster includes speedometer, tachometer, trip computer, fuel gauge, AT select indicator (automatic models only), cruise control indicator, high beam indicator and front fog light indicator. 5. Multi-information display includes fuel economy, temperature and clock. 6. Bluetooth[®] is a registered trademark of Bluetooth SIG Inc. System operation ability is subject to the Bluetooth[®] wireless technology specification of individual's phone. 7. Some parts of the seating are not full natural leather. 8. Information display and operation ability is subject to compatibility of the Bluetooth[®] audio device to AVCRP and some functions may be restricted. 9. DVD only operates when vehicle is stationary. 10. There may be restrictions on features available for certain models that are not fully compliant with AVCRP. 11. Auxiliary jack and USB connection not available if factory satellite navigation is fitted. 12. RCA jacks replace auxiliary jack and USB connection when factory satellite navigation is fitted.

INTERIOR

TRIM COLOUR



BLACK:
 Cloth: Outback 2.5i and Outback 2.0D
 Leather: Outback 2.5i Premium, Outback 3.6R Premium and Outback 2.0D Premium



IVORY:
 Leather: Outback 3.6R Premium

ENTERTAINMENT



SINGLE IN-DASH CD PLAYER:
 Outback 2.0D



IN-DASH SATELLITE NAVIGATION SYSTEM:
 Outback 2.5i



MULTI-INFORMATION IN-DASH SATELLITE NAVIGATION SYSTEM:
 Outback 2.5i Premium and Outback 2.0D Premium

TRIM PANELS



SILVER:
 Outback 2.5i, Outback 2.5i Premium, Outback 2.0D and Outback 2.0D Premium



WOODGRAIN:
 Outback 3.6R Premium



McINTOSH ENTERTAINMENT SYSTEM:
 Outback 3.6R Premium

A HUE THAT'S YOU

One of the final choices - but one of the most important! The colour you choose for your Outback makes a bold statement about who you are. So we've made sure you've got lots of ways to express yourself - with a wide range of colours to make your Outback more... you.



SATIN WHITE PEARL



SAGE GREEN METALLIC



SUNLIGHT GOLD OPAL



ICE SILVER METALLIC



CAMELLIA RED PEARL



GRAPHITE GREY METALLIC



GALAXY BLUE SILICA



CRYSTAL BLACK SILICA