

FORESTER

MODEL YEAR 2013



ALL 4 THE DRIVER™



SUBARU

FREEDOM IS IN OUR DNA

Bring on storms.
Bring on hairpins.
Bring on gravel roads and dirt roads.
Get off the beaten track. Discover somewhere new.



SUBARU DNA

ALL 4 THE PERFORMANCE. THE SAFETY. THE RETAINED VALUE

Our DNA is what makes every Subaru a Subaru. It's our constant focus on **performance**, **safety** and protecting the **retained value** of your Subaru that makes Subaru distinct from any other car brand. Our DNA delivers you, the Driver, the confidence to exploit your Freedom everyday.

POISED PERFORMANCE

Subaru has long been highly regarded for its performance technologies. From the rally circuit to the highway, Subaru's engineering and driving characteristics are focused on delivering a driving experience unlike any other, handling all road and weather conditions with ease, control and comfort.



SYMMETRICAL
ALL-WHEEL DRIVE

→ SYMMETRICAL ALL-WHEEL DRIVE

Delivers outstanding grip, balance and control in a variety of road conditions when combined with Subaru's horizontally-opposed Boxer engine technology and a symmetrical drivetrain.



POWERFUL
BOXER ENGINE

→ HORIZONTALLY-OPPOSED BOXER ENGINE

Ensures smooth power delivery, with less vibration and its low centre of gravity gives optimum balance and control to you, the Driver.

SUPERIOR SAFETY

Impressive safety credentials have earned Subaru the maximum five-star ANCAP occupant safety rating, plus freedom from worry for you, thanks to Subaru's -



VEHICLE DYNAMICS
CONTROL

→ VEHICLE DYNAMICS CONTROL SYSTEM



ANCAP
MAXIMUM 5-STAR
ANCAP SAFETY

→ RING-SHAPED PASSENGER SAFETY CELL → DUAL FRONT, DUAL FRONT SIDE, CURTAIN AND DRIVER'S KNEE AIRBAGS



ANTI-LOCK
BRAKING SYSTEM

→ ABS, EBD AND 4-WHEEL DISC BRAKES

RETAINED VALUE



3 YEAR UNLIMITED
KM WARRANTY

Freedom comes from knowing that you've made a great investment. Every Subaru comes into the world as the best car it can be, and then we help you to keep it that way. We promise to protect your freedom by looking after the **performance**, **safety** and the **retained value** of your vehicle. With our dedicated Subaru Service Centres and microscopic **DataDotDNA**® theft protection, your car is in good hands for many years to come.



DATADOT
SECURITY SYSTEM

ALL OF THIS ADDS UP TO A GREATER EXPERIENCE FOR YOU –
THE FORESTER DRIVER. SUBARU. ALL 4 THE DRIVER.™

UNRAVEL THE
FORESTER'S DNA AT
SUBARU.COM.AU

NEW SMARTER SAFER FURTHER FORESTER

In 1997 the revolution began when the Forester took Australia by storm. Now the New Generation Forester boasts a range of improvements making it smarter and more refined with new hi-tech luxurious interiors and advanced safety features, all wrapped up in a sleek new design.

WHY SMARTER?

Drive smarter with Premium Multi-Function Display and *Bluetooth*^{®1} wireless technology, plus a powered rear gate and smart key and push button start on selected models.

WHY SAFER?

Stay safer with seven SRS² airbags, rear view reverse camera, five-star ANCAP Safety and Subaru's renowned EyeSight™ 'driver assist system' on selected models.

GO FURTHER

Go further with X-Mode on selected models for enhanced off-road ability, improved fuel economy and CO₂ (EURO5) emissions across the range and Auto Stop Start on selected models.



TAKE THE BACK ROADS

Turn off the highway and head out into nature. Take a tent. Take on a new adventure. Push a button and the powered rear gate opens to let you easily load and unload all the gear.

The new, more aerodynamic exterior design belies the larger, more spacious cabin which delivers enhanced passenger luxury and comfort. Making the journey just as breathtaking as the destination. The New Generation Forester - an SUV that's All 4 the Driver™ and all for the weekend.

CLOCKWISE:

- Powered rear gate - Available on Forester 2.5i-S, 2.0XT Premium and 2.0D-S
- Stylish rear spoiler - all models
- Front fog lights - all models except Forester 2.0i, 2.5i and 2.0D
- Headlights - self-levelling Xenon low beam with LED positioning lamps - Available on Forester 2.5i-S, 2.0XT, 2.0XT Premium and 2.0D-S
- Smart key entry - Available on Forester 2.5i-S, 2.0XT Premium and 2.0D-S



1. Bluetooth® is a registered trademark of Bluetooth SIG Inc. System operation ability is subject to Bluetooth® wireless technology specification of individuals phone. 2. SRS: Supplemental Restraint System. Effective when used in conjunction with seat belts.

BREAK WITH CONVENTION



The Forester lets you take charge, with *Bluetooth*^{®1} wireless technology and a 12-volt power outlet to recharge your mobile phone on the go. The rear view reverse camera (on all models) will keep you in the picture, while the ergonomically designed dash includes a fully integrated Multi-Function Display to give the driver essential information including fuel economy statistics. Slip in your favourite CD or plug in to the auxiliary jack and USB port in the front centre console to control your MP3 player through the steering wheel mounted audio buttons. The Forester 2.5i-S and 2.0D-S raise the bar with a multi-information satellite navigation system with 6.1 inch touch screen and single CD/DVD player, whilst the Forester 2.0XT Premium includes a harman kardon^{®2} audio system with satellite navigation.

TOP TO BOTTOM:

- Steering wheel mounted audio controls
- Rear view reverse camera - as shown on Forester 2.5i-S
- iPod/MP3 compatibility lets you take your favourite music with you
- harman kardon^{®2} audio system with built in satellite navigation - Forester 2.0XT Premium
- Multi-information in-dash satellite navigation system with single cd player, six speakers and 6.1 inch touch screen - Forester 2.5i-S and 2.0D-S
- Single in-dash cd player with six speakers - Forester 2.0i, 2.5i, 2.0i-L, 2.5i-L, 2.0XT, 2.0D and 2.0D-L

GET ENTERTAINED
BY FORESTER AT
SUBARU.COM.AU

1. *Bluetooth*[®] is a registered trademark of Bluetooth SIG Inc. System operation ability is subject to *Bluetooth*[®] wireless technology specification of mobile device. 2. harman kardon is a registered trademark of HARMAN International Industries, Incorporated.

Be seduced by the enticing glow of the Forester cabin. With comfort features and contemporary connectivity that invite you to plug in and breathe out. Relax and recharge. Knowing that you are in control.





LIVE GENEROUSLY

A generosity of space, cultivates a generosity of spirit. Maybe that's why Forester is Australia's favourite AWD SUV. A luxurious SUV with a cult-like status and a passion that's contagious.



COMFORT ZONE

The New Generation Forester delivers a more spacious cabin with a level of soft touch interior luxury that belies its rugged performance. Up front, the ergonomically designed cockpit puts the driver in the perfect position for the Multi-Function Display and rear view reverse camera. Generous storage throughout includes moulded door pockets with bottle holders and a rear retractable centre armrest with integrated cup holders. Rear passengers can enjoy ample leg room, while the reclining rear seat function provides additional levels of comfort. Heater ducts in the rear are also standard and there's a retractable centre console on all models. The cargo area offers abundant space for all your cargo needs, plus the versatility to fold the rear seats flat or in 60/40 configuration should you need to move something sizeable.

For ultimate comfort, Forester 2.5i-S, 2.0XT Premium and 2.0D-S boast leather¹ seats coupled with heated front seats, an eight-way power adjustable seat for the driver, push button start and a powered rear gate for easy access to your cargo at the push of a button, no effort required – so you can save your energy for climbing those mountains or shopping up a storm.

TOP TO BOTTOM:

- Electric sunroof available on Forester 2.5i-S, 2.0XT, 2.0XT Premium and 2.0D-S
- Rear retractable centre armrest with cup holders
- Seat back pockets - driver and front passenger as shown on Forester 2.5i-S

**STRETCH OUT AND
FEEL THE SPACE AT
SUBARU.COM.AU**



1. Some parts of seating not full natural leather.



ADVENTURE SEEKING

Born from the mud, sweat and cheers of the world rally circuit straight to your driveway. The fourth generation Forester has been race bred and fine tuned over thousands of kilometres of gravel and bitumen. Refined with precise handling, the Forester sets a new benchmark in SUV performance.

A WINNING PERFORMANCE

If ever you needed an excuse to take the longest route from A to B, this is it. The New Generation Forester takes adventure in its stride. Choose your level of excitement and control with Forester variants including Lineartronic™ Continuously Variable Transmission (CVT) or an easy to drive, six-speed manual transmission developed to deliver improved driveability and a quieter ride.

When the going gets tough, engage Forester's new X-Mode, standard on all CVT models, and the vehicle takes control to adjust the speed on steep slopes for better grip and traction in slippery conditions. Also designed to let you select your driving mode of choice is Subaru Intelligent Drive (SI-Drive), available on selected models. In Forester 2.0XT and 2.0XT Premium SI-Drive offers three distinctive driving modes. Intelligent (I) mode for everyday, Sport (S) for enhanced acceleration or SportSharp (S#) for an exhilarating drive.

Auto Stop Start engine technology, standard on all naturally aspirated petrol models, takes petrol engine efficiency to a new level while meeting EURO5 emission standards by automatically stopping the engine and then restarting it in a fraction of a second with no driver intervention required. The fuel savings and engine stop time delivered by this system can be monitored on the Multi-Function Display.

For the ultimate thrill-seeker, the Forester 2.0XT and 2.0XT Premium delivers the ride you're looking for. With a high performance turbocharged direct injection Subaru Boxer engine, improved aerodynamics, striking 18" alloy wheels, and sports styling, the XT models are the pinnacle of the new Forester range.

CLOCKWISE:

- X-Mode enhances off-road ability - available on all Lineartronic™ CVT models
- Paddle gear shift and SI-Drive (Forester 2.0i-L, 2.5i-L, 2.5i-S, 2.0XT and 2.0XT Premium), and cruise controls (all models) on steering wheel
- Distinctive 18 inch alloy wheels - Forester 2.5i-S, 2.0XT, 2.0XT Premium and 2.0D-S
- Premium Multi-Function Display
- Tail pipe cover - Forester 2.0i-L, 2.5i-L, 2.5i-S, 2.0XT, 2.0XT Premium and 2.0D-L, 2.0D-S
- Smart key and push button start - Forester 2.5i-S, 2.0XT Premium and 2.0D-S



MODEL SHOWN: Forester 2.0XT Premium





THINK OUTSIDE THE BOXER

Solid. Brave. Proven. Subaru's Boxer engine design lies at the heart of the Forester. However the innovation doesn't stop there. Every inch of the Forester is a tribute to the boldness of Subaru's visionary engineers.

MODEL SHOWN: Forester 2.0XT Premium



Consistent across the Forester range is the famous Subaru Boxer engine that has been designed to sit lower and flatter in the engine bay than traditional engines. Due to this unique design it delivers less noise and vibration to the cabin, while the lowered centre of gravity improves stability, cornering and traction with the road. Coupled with the Forester's symmetrical drivetrain, this configuration delivers superior handling confidence, better balance, smoothness and ultimately, outstanding driver enjoyment.

The intelligent drive systems incorporated into the Forester include Electronic Throttle Control (ETC) which seamlessly translates commands from the driver's right foot to automatically select the optimum throttle position for an effortless performance. The ETC system also considers the environment optimising exhaust gas emissions and fuel economy.

Each petrol engine in the Forester range has also been finely tuned to deliver optimum fuel economy, power and torque, via Subaru's Active Valve Control System.



- Forester 2.0i and 2.0i-L feature a 2.0-litre four-cylinder DOHC petrol engine with a Dual Active Valve Control System (Dual AVCS).
- Forester 2.5i , 2.5i-L and 2.5i-S feature a 2.5-litre four-cylinder DOHC petrol engine with Active Valve Control System (AVCS).
- Forester 2.0XT and 2.0XT Premium feature a 2.0-litre direct injection turbocharged, four-cylinder DOHC petrol engine with Dual Active Valve Control System (Dual AVCS).
- Forester 2.0D, 2.0D-L and 2.0D-S features a turbocharged, 2.0-litre four-cylinder DOHC Diesel engine.

GET THE
FACTS AT
SUBARU.COM.AU

GO FURTHER, DO MORE



1,000KM¹/1 TANK



MODEL SHOWN: Forester 2.0D-S

Enjoy the weekend adventure and one tank of diesel is all you need to get there – and back again. The grunty performance and legendary fuel economy all add up to a diesel that's All 4 the Driver.™

NO STOPPING

Whether you're exploring the beauty of the coast or roaring down the freeway, the turbocharged horizontally-opposed Boxer Diesel engine means less stops and more fun. With outstanding fuel economy, and an extraordinary driving range, the Forester is capable of travelling over 1,000km¹ on a single tank. All while caring for the environment, by meeting EURO5 emissions standards.

The four-cylinder Double OverHead Cam diesel engine delivers a spirited performance with strong pulling power, while the six-speed manual transmission lets you effortlessly select the right gear for the situation. The sporty Forester Diesel range comes in three variants; Forester 2.0D, 2.0D-L and 2.0D-S.

FIND OUT HOW YOU CAN
GO THE DISTANCE AT
SUBARU.COM.AU





ALL WHEELS,
ALL OF THE TIME

MODEL SHOWN: Forester 2.0XT Premium



Scientifically conceived. Rigorously tested for the last 40 years. Subaru's iconic Symmetrical All-Wheel Drive system is the pinnacle of superior Japanese technology. Technology that sets you free.



CONFIDENCE UNDER ALL CONDITIONS

The sign of a true performer, is good balance. And when it comes to driving a Subaru, superior balance equals superior vehicle control. That's why Subaru has built its reputation on its Symmetrical All-Wheel Drive (SAWD) system and a symmetrical drivetrain that deliver an innate sense of balance from the ground up.

SAWD delivers engine power to all four wheels simultaneously. Having power distributed across all four wheels, rather than two on conventional vehicles, gives you twice the grip capacity. So under acceleration there's more grip for cornering and more capacity to keep on track through the corners. Ultimately, having the driving force spread across all four wheels means greater control and confidence under all conditions.

The traction and control delivered by SAWD is further enhanced by the Forester's suspension. The wide track rigid front suspension produces more responsive steering and cornering, while the double wishbone rear suspension ensures a smooth, controlled ride with outstanding handling, comfort and quietness.

For you, the driver, it all adds up to an agile and responsive vehicle with optimum balance, control and confidence in a variety of driving conditions.

FIND OUT MORE
ABOUT SAWD AT
SUBARU.COM.AU



ANCAP
Safety ★★★★★

SAFETY AS ACTIVE AS YOU

The life you've longed for is active, adventurous, unpredictable. The best times are often those that happen, when nothing's planned. That's because Subaru has planned everything for you. Building active and passive safety into every aspect of your Forester.





CRUNCH TIME

Because you never know what's around the corner, Subaru have made safety an integral part of every vehicle. By incorporating the very latest safety technology, every vehicle in the Subaru range proudly carries the maximum five-star ANCAP¹ crashworthiness rating for occupant safety. The ring-shaped passenger cell is made from high-tensile strength steel, which directs impact energy around the passenger compartment, not through it.

Thanks to Subaru's electronic driver assist system, called Vehicle Dynamics Control (VDC), a range of stability and braking technologies step in to maintain safety in extreme situations. By automatically acting on information transmitted from a sophisticated array of sensors, the factors influencing the Forester's stability are constantly monitored to help the driver stay in control.

Subaru Vehicle Dynamics Control incorporates:

- Electronic Stability Control (ESC)
- Traction Control System (TCS)
- TCS Limited Slip Device (LSD)
- Anti-lock Braking System (ABS)
- Electronic Brakeforce Distribution (EBD)
- Brake Assist

Active safety features on the Forester are complemented by an optimum blend of passive safety, designed to enhance driver and passenger protection:

- The Boxer engine sits low in the engine bay to help protect occupants by sliding below the cabin - not into it - in the event of a severe frontal collision.
- Ring-shaped passenger safety cell combines rigid reinforced sections with crumple zones designed to absorb impact energy and reduce injury.
- Seven SRS² airbags - dual front, dual front side, curtain and driver knee airbags.
- Front seatbelts feature pretensioners and load limiters.
- Automatic Emergency Locking Retractors on all rear seatbelts.
- Height adjustable headrests throughout the cabin.
- Rear view reverse camera.

READ ABOUT SUBARU
SAFETY TECHNOLOGIES AT
SUBARU.COM.AU

1. Australasian New Car Assessment Program. 2. SRS: Supplemental Restraint System. Effective when used in conjunction with seat belts.



EYESIGHT™ - DRIVER ASSISTANCE VISION

AVAILABLE ON FORESTER 2.5i-L (OPTIONAL),
2.5i-S AND 2.0XT PREMIUM ONLY.

Subaru's renowned technologies now include a new 'driver assist system' called EyeSight™. EyeSight™ is a second pair of eyes that monitors the road ahead and recognises potentially dangerous driving situations. Using three-dimensional images captured by cameras mounted at the top of the front windscreen, EyeSight™ provides audible and visual warnings to prompt the driver to take action. Apart from these built-in driver alert functions, EyeSight™ will also apply automatic braking intervention, when necessary, to help avoid or reduce the severity of a detected frontal collision.

EyeSight™ driver assist features include:


- **PRE-COLLISION BRAKING** provides automatic braking to help avoid or reduce the severity of detected frontal accident impacts. Should the driver be distracted, or just not register the risk of a collision, braking will be automatically applied when a potential frontal collision is recognised by EyeSight™.
- **PRE-COLLISION BRAKE ASSIST** recognises a potential frontal impact, alerts the driver and assists the driver by applying full braking force in a detected emergency-braking situation.
- **PRE-COLLISION THROTTLE MANAGEMENT** reduces available acceleration in situations where the system detects objects in front of the vehicle which the vehicle is likely to impact. The engine output is restricted to reduce the possible impact force and frontal impact damage, and to help minimise injury should the driver mistakenly accelerate when an object directly in front of the car is recognised by EyeSight™.
- **ADAPTIVE CRUISE CONTROL** maintains the speed set by the driver, but also regulates the vehicle's speed in order to maintain a set distance from the car in front. The driver can select from three different distances, based on time and speed, and then the EyeSight™ system will automatically use braking and monitoring technologies to regulate the vehicle's speed in line with the traffic flow.
- **LANE SWAY AND DEPARTURE WARNING** monitors the vehicle's position within the road lane markings and sounds a warning to the driver when it recognises the potential for the vehicle to unintentionally move out of its lane, or when swaying within the lane, is recognised by EyeSight™.
- **LEAD VEHICLE START ALERT** prompts the driver that the vehicle in front is moving away, after being stopped. This effectively alerts the driver, if their vehicle does not start moving, that the traffic ahead is moving again.

EyeSight™ works with Subaru's acclaimed collision avoidance and collision protection technologies, working together to provide improved protection for you and your family.

While EyeSight™ can assist drivers in avoiding or reducing the severity of a detected frontal collision, there is naturally no substitute for driver vigilance, awareness and responsibility. EyeSight™ will see and recognise most objects within its field of vision, however its accuracy may be affected by external conditions and it should not be relied on to detect every potential road traffic hazard.

TO SEE HOW EYESIGHT™ WORKS, VISIT SUBARU.COM.AU TO WATCH THE VIDEO DEMONSTRATIONS. OR FOR ALL OF THE FINE DETAIL, PLEASE REFER TO THE OWNER'S MANUAL.





You catch a fleeting vision in your mind's eye.
Is it intuition? A premonition?
Or is it Subaru EyeSight™ – driver assist technology
designed to act like a second pair of eyes.

FIND OUT MORE
ABOUT EYESIGHT AT
SUBARU.COM.AU

OUR SERVICE PROMISE:

WE ARE ALL **BORN FREE** BUT STAYING FREE,
THAT'S THE HARD PART.

ONCE YOU GET USED TO GOING ANYWHERE
- **AND DOING ANYTHING** -
YOU CAN **NEVER GO BACK.**

THAT **FREEDOM** IS SOMETHING YOU NEED TO **HOLD ON TO.**
SOMETHING TO **GRAB** WITH BOTH HANDS.
REMEMBER, YOU STILL HAVE CORNERS, COUNTRIES,
AND CONTINENTS **TO CONQUER.**

WE ARE YOUR **GUARDIANS OF FREEDOM.**
THIS IS YOUR **PRIDE AND JOY.**
LOVE IT, LOOK AFTER IT AND IT'LL LOOK AFTER YOU IN RETURN.

IT TOOK THE FINEST MINDS IN JAPAN TO BUILD
THIS INCREDIBLE VEHICLE.
WHY LET JUST ANYONE TINKER WITH IT?

ENTRUST IT ONLY TO THOSE YOU **TRUST MOST.**

YOU CAN'T PUT A PRICE ON **FREEDOM,**
BUT CONFIDENCE IS **SURPRISINGLY AFFORDABLE.**

WE WILL PROTECT YOUR FREEDOM.

TAKE TO THE ROAD WITH THE KNOWLEDGE THAT YOU HAVE
THE EXPERIENCE AND SUPPORT OF SUBARU BEHIND YOU.

SUBARU GENUINE SERVICE

Entrust your Subaru only to those who know it best. They are the Subaru technicians who are passionate about maintaining your freedom and who train year after year until they know your vehicle inside out. Using specialist diagnostic equipment and Subaru Genuine Parts, they are committed to keeping your Subaru **performing** at its best. Delivering freedom from worry, while ensuring the **safety** of your family and the long-term **retained value** of your vehicle.

SUBARU NEW CAR WARRANTY - THREE YEARS / UNLIMITED KILOMETRES

Whether you're off the beaten track or cruising the open highway, you can rest assured knowing that your new Subaru is covered by a three year unlimited kilometre manufacturer's national warranty. That's three full years of worry free driving! For full details and our latest new car warranty information, visit subaru.com.au/service/warranty

But why stop there, when you're sure to have your Subaru for much longer? Protect your investment by purchasing an additional two year Subaru Assured New Vehicle Warranty. Ask your Subaru Retailer for more information.

SUBARU ASSURED USED VEHICLES

Owning a Subaru that has already traversed highways and byways is like travelling with an old friend. Every Subaru Assured Used Vehicle has passed a 116-point quality inspection and comes with a one year unlimited kilometre Subaru Assured Warranty - to complement the balance of a new vehicle warranty or the statutory warranty that remains - from participating Subaru Assured Retailers.

SUBARU PREFERRED COLLISION REPAIRER NETWORK

When you take the road less travelled, you're going to get wet and you're going to get dirty. But should you put a dent in your freedom, there is a dedicated Subaru Preferred Collision Repairer helpline available on 1800 737 179, 24-hours a day, seven days a week. Plus the national network of appointed Subaru Preferred Collision Repairers, can return your Subaru to its former glory.

DATADOT[®]DNA

Every Subaru is fitted with advanced engine immobilisers and DATADOT[®]DNA technology. Approximately 7,000 microscopic dots are laser-etched with your vehicle's unique Vehicle Identification Number - making your Subaru a much less attractive target for potential thieves. In fact, provided you meet certain terms and conditions (such as a requirement that the vehicle is properly registered and comprehensively insured at the time of theft) DATADOT[®]DNA will even pay your insurance excess (up to a maximum of \$800 incl GST) should your new Subaru be stolen in the first year of ownership and the vehicle is not recovered despite the presence of DATADOT[®]DNA and warning labels¹.

1. Claims must be received from the vehicle's registered owner within 45 days of the theft accompanied by a police report in relation to the theft and proof that the insurer has fully paid out the claim.

SUBARU FINANCE

Relax with Subaru Finance and enjoy your freedom faster with our range of personalised and affordable financial solutions to approved customers. Our finance specialists will help you find a finance package that is tailored to your individual needs - quickly and conveniently. So let Subaru Finance do the work for you, it's what we do best.

SUBARU INSURANCE

Freedom is limitless. So why keep your car in the garage? Explore your freedom, but also protect it. There is a range of Subaru Insurance options that offer features and benefits to complement your Subaru, including:
→ Subaru Comprehensive Motor Vehicle Insurance
→ Subaru Motor Equity Insurance
→ Subaru Loan Protection Insurance

SUBARU LIFESTYLE

You wear your freedom like a badge of honour and now you can embrace all things Subaru with our range of quality merchandise. To see the entire Subaru merchandise range, visit shop.subaru.com.au, or ask your local authorised Subaru Retailer.

BEING A SUBARU OWNER COMES WITH MANY GREAT BENEFITS.
VISIT SUBARU.COM.AU TO SEE THE BENEFITS AVAILABLE TO YOU.



FORESTER AWARDS

- 2011 - Australia's best selling compact SUV, VFACTS 2008, 2009, 2010 and 2011
- 2009 - Best Compact SUV - Carsales Network People's Choice Award 2009, Subaru Forester
- 2008 - Best Compact SUV - Carsales Network People's Choice Award 2008, Subaru Forester
 - People's Choice Award - Drive 2008, Subaru Forester
 - Australasian New Car Assessment Program (ANCAP) five-star occupant safety rating for the entire Forester range
 - International Engine of the Year Award, 2.0 - 2.5-litre class, Subaru Forester XT (2.5-litre turbocharged horizontally-opposed Boxer engine)
- 2006 - International Engine of the Year Award, 2.0 - 2.5-litre class, Subaru Forester XT (2.5-litre turbocharged horizontally-opposed Boxer engine)
- 2004 - Australasian New Car Assessment Program (ANCAP) five-star occupant safety rating for the entire Forester range
 - Queensland Country Life, Queensland Country and Recreational Car of the Year, Subaru Forester 2.0XT
- 2003 - Australia's Best Cars, Best Recreational 4 Wheel Drive, Subaru Forester X
 - Australasian New Car Assessment Program (ANCAP) five-star occupant safety rating for the Forester XS Luxury (the best-ever rating for a compact ATW)
- 2002 - Australia's Best Cars, Best Recreational 4-Wheel Drive, Subaru Forester X
 - The Courier Mail, Queensland Car of the Year, Outstanding Recreational Vehicle, Subaru Forester X
- 2001 - Australia's Best Cars, Best Recreational Vehicle Under \$45,000, Subaru Forester Limited
 - The Courier Mail, Queensland Car of the Year, Outstanding Recreational Vehicle, Subaru Forester
- 2000 - Australia's Best Cars, Best Recreational Vehicle, Subaru Forester
 - 4x4 Australia, Best All-Wheel Drive, Subaru Forester
 - The Courier Mail, Queensland Car of the Year, Outstanding Recreational Vehicle, Subaru Forester
- 1999 - RACT Best Cars, TAS, Best Recreational Vehicle & Overall Winner, Subaru Forester
 - RACQ/The Courier Mail, QLD, Q-Car 1999, Best Recreational Vehicle & Overall Winner, Subaru Forester

subaru.com.au

Subaru (Aust) Pty Limited ABN 95 000 312 792 (Subaru Australia)
Level 3, 4 Burbank Place, Baulkham Hills NSW 2153. Toll Free: 1800 226 643
Subaru Australia reserves the right to vary vehicle specifications and standard features in Australia from those detailed in this brochure.
Vehicles shown in this brochure may be fitted with accessories available at additional cost.
No part of the brochure can be reproduced without written permission from Subaru Australia. Printed in Australia.
© Copyright 2013 - Subaru (Aust) Pty Limited. All rights reserved.

ALL 4 THE DRIVER™



FORESTER

SPECIFICATIONS & ACCESSORIES
MODEL YEAR 2013



ALL 4 THE DRIVER™



SUBARU

KEY FEATURES

FORESTER 2.0i/2.5i

PERFORMANCE

- Symmetrical All-Wheel Drive
- Engine: horizontally-opposed Boxer engine
- Transmission: 2.0-litre 6-speed manual or 2.5-litre Lineartronic™ CVT
- Maximum power output: 110kW@6200rpm (MT)
126kW@5800rpm (CVT)
- Maximum torque: 198Nm@4200rpm (MT)
235Nm@4100rpm (CVT)
- Auto Stop Start
- X-Mode (CVT)

EXTERIOR

- 17" steel wheels
- Rear spoiler
- Roof rails
- 220mm ground clearance

INTERIOR

- Air-conditioning - climate control (CVT with dual zone)
- Manual seat height lifter - driver
- One touch electric folding rear seats
- Power windows, mirrors and steering
- Reclining rear seat
- Seat trim cloth (choice of black or grey)

ENTERTAINMENT / TECHNOLOGY

- Multi-Function Display Unit (MFD)
- Single in-dash CD player featuring:
 - AM/FM radio
 - 6 speakers



- MP3/WMA/iPod compatible
- Auxiliary jack - front centre console
- USB connection - front centre console
- Bluetooth®¹ wireless technology with:
 - Handsfree mobile communication
 - Audio streaming²
 - Voice command recognition
- Rear view reverse camera
- Steering wheel audio, Bluetooth®¹, cruise and MFD controls

FORESTER 2.0i-L/2.5i-L

PERFORMANCE

- Symmetrical All-Wheel Drive
- Engine: horizontally-opposed Boxer engine
- Transmission: 2.0-litre 6-speed manual or 2.5-litre Lineartronic™ CVT with manual mode
- Maximum power output: 110kW@6200rpm (MT)
126kW@5800rpm (CVT)
- Maximum torque: 198Nm@4200rpm (MT)
235Nm@4100rpm (CVT)
- Auto Stop Start
- Subaru Intelligent Drive (SI-DRIVE)
- X-Mode (CVT)

EXTERIOR

- 17" alloy wheels
- Body coloured mirrors with indicators
- Front fog lights
- Rear spoiler
- Roof rails
- Privacy glass
- 220mm ground clearance

INTERIOR

- Air-conditioning - dual zone climate control
- Leather steering wheel/gear shift
- Manual seat height lifter - driver
- One touch electric folding rear seats
- Paddle gear shift (CVT)
- Power windows, mirrors and steering
- Reclining rear seat
- Seat trim cloth (choice of black or grey)

ENTERTAINMENT / TECHNOLOGY

- Multi-Function Display Unit (MFD)
- Single in-dash CD player featuring:



- AM/FM radio
- MP3/WMA/iPod compatible
- Auxiliary jack - front centre console
- USB connection - front centre console
- Bluetooth®¹ wireless technology with:
 - Handsfree mobile communication
 - Audio streaming²
 - Voice command recognition
- Rear view reverse camera
- Steering wheel audio, Bluetooth®¹, cruise and MFD controls
- OPTIONAL: EyeSight™ technology (CVT)

FORESTER 2.5i-S

PERFORMANCE

- Symmetrical All-Wheel Drive
- Engine: 2.5-litre horizontally-opposed Boxer engine
- Transmission: Lineartronic™ CVT with manual mode
- Maximum power output: 126kW@5800rpm
- Maximum torque: 235Nm@4100rpm
- Auto Stop Start
- Subaru Intelligent Drive (SI-DRIVE)
- X-Mode

EXTERIOR

- 18" alloy wheels
- Electric sunroof
- Front fog lights
- Headlights self-levelling Xenon low beam with auto off (dusk sensing)
- Heated door mirrors with indicators
- Rain sensing wipers
- Roof rails
- 220mm ground clearance

INTERIOR

- Air-conditioning - dual zone climate control
- Heated seats - driver and front passenger
- Leather steering wheel/gear shift

- One touch electric folding rear seats
- Powered rear gate
- Power windows, mirrors and steering
- Reclining rear seat
- Seat trim leather³ (choice of black or grey - perforated seat inserts)
- 8-way powered seat - driver

ENTERTAINMENT / TECHNOLOGY

- Multi-Function Display Unit (MFD)
- Multi-information in-dash satellite navigation system featuring:
 - AM/FM radio
 - 6 speakers
 - Single CD player



- MP3/WMA/iPod compatible
- 6.1" touch screen
- Auxiliary jack - front centre console
- USB connection - front centre console
- Bluetooth®¹ wireless technology with:
 - Handsfree mobile communication
 - Audio streaming²
 - Voice command recognition
- Rear view reverse camera
- Steering wheel audio, Bluetooth®¹, cruise and MFD controls
- Smart key with push button start ignition
- EyeSight™ technology

1. Bluetooth® is a registered trademark of Bluetooth SIG Inc. System operation ability is subject to the Bluetooth® wireless technology specification of individual's phone. 2. There may be restrictions on features available for certain models that are not fully compliant with AVCRP. 3. Some parts of the seating are not full natural leather.



FORESTER 2.0XT



PERFORMANCE

- Symmetrical All-Wheel Drive
- Engine: 2.0-litre direct injection turbocharged horizontally-opposed Boxer engine
- Transmission: Lineartronic™ CVT with manual mode
- Maximum power output: 177kW@5600rpm
- Maximum torque: 350Nm@2400-3600rpm
- Subaru Intelligent Drive (SI-DRIVE)
- X-Mode

EXTERIOR

- 18" alloy wheels
- Headlights - self-levelling Xenon low beam with auto off
- Electric sunroof
- Front fog lights
- Privacy glass
- Rear spoiler
- Roof rails (silver)
- 220mm ground clearance

INTERIOR

- Air-conditioning - dual zone climate control
- Leather steering wheel/gear shift
- Paddle gear shift
- Seat trim cloth with vinyl accents
- Sports pedals
- Manual seat height lifter - driver
- One touch electric folding rear seats
- Reclining rear seat

ENTERTAINMENT / TECHNOLOGY

- Multi-Function Display Unit (MFD)
- Single in-dash CD player featuring:
 - AM/FM radio
 - 6 speakers
 - MP3/WMA/iPod compatible
- Auxiliary jack - front centre console
- USB connection - front centre console
- Bluetooth®¹ wireless technology with:
 - Handsfree mobile communication
 - Audio streaming²
 - Voice command recognition
- Rear view reverse camera
- Steering wheel audio, Bluetooth®¹, cruise and MFD controls



FORESTER 2.0XT PREMIUM



PERFORMANCE

- Symmetrical All-Wheel Drive
- Engine: 2.0-litre direct injection turbocharged horizontally-opposed Boxer engine
- Transmission: Lineartronic™ CVT with manual mode
- Maximum power output: 177kW@5600rpm
- Maximum torque: 350Nm@2400-3600rpm
- Subaru Intelligent Drive (SI-DRIVE)
- X-Mode

EXTERIOR

- 18" alloy wheels
- Electric sunroof
- Front fog lights
- Headlights - self-levelling Xenon with auto off (dusk sensing)
- Heated door mirrors with indicators
- Rain sensing front windscreen wipers
- Rear spoiler
- Roof rails (silver)
- 220mm ground clearance

INTERIOR

- Air-conditioning - dual zone climate control
- Heated seats - driver and front passenger
- Leather steering wheel/gear shift
- One touch electric folding rear seats
- Paddle gear shift
- Powered rear gate
- Power windows, mirrors and steering
- Reclining rear seat
- Seat trim leather³ choice of black or grey (perforated seat inserts)
- Sports pedals
- 8-way power seat - driver and front passenger

ENTERTAINMENT / TECHNOLOGY

- Multi-Function Display Unit (MFD)
- harman kardon®⁴ entertainment system featuring:
 - Built-in multi-information in-dash satellite navigation system

- AM/FM radio
- MP3/WMA/iPod/DIVX compatible
- 8 speakers
- 6.1" touch screen
- Auxiliary jack - front centre console
- USB connection - front centre console
- Bluetooth®¹ wireless technology with:
 - Handsfree mobile communication
 - Audio streaming²
 - Voice command recognition
- Rear view reverse camera
- Smart key with push button start ignition
- Steering wheel audio, Bluetooth®¹, cruise and MFD controls
- EyeSight™ technology

1. Bluetooth® is a registered trademark of Bluetooth SIG Inc. System operation ability is subject to the Bluetooth® wireless technology specification of individual's phone. 2. There may be restrictions on features available for certain models that are not fully compliant with AVCRP. 3. Some parts of the seating are not full natural leather. 4. harman kardon is a registered trademark of HARMAN International Industries, Incorporated.

FORESTER 2.0D

PERFORMANCE

- Symmetrical All-Wheel Drive
- Engine: 2.0-litre turbocharged diesel horizontally opposed Boxer engine
- Transmission: 6-speed manual
- Maximum power output: 108kW@3600rpm
- Maximum torque: 350Nm@1600-2400rpm

EXTERIOR

- 17" alloy wheels
- Exterior grade badge
- Headlights - halogen with auto off
- Rear spoiler
- Roof rails
- 220mm ground clearance

INTERIOR

- Air-conditioning - dual zone climate control
- Manual seat height lifter - driver
- One touch electric folding rear seats



- Power windows, mirrors and steering
- Reclining rear seat
- Seat trim cloth (choice of black or grey)

ENTERTAINMENT / TECHNOLOGY

- Multi-Function Display Unit (MFD)
- Single in-dash CD player featuring:
 - AM/FM radio
 - 6 speakers
 - MP3/WMA/iPod compatible

- Auxiliary jack - front centre console
- USB connection - front centre console
- Bluetooth®¹ wireless technology with:
 - Handsfree mobile communication
 - Audio streaming²
 - Voice command recognition
- Rear view reverse camera
- Steering wheel audio, Bluetooth®¹, cruise and MFD controls

FORESTER 2.0D-L

PERFORMANCE

- Symmetrical All-Wheel Drive
- Engine: 2.0-litre turbocharged diesel horizontally opposed Boxer engine
- Transmission: 6-speed manual
- Maximum power output: 108kW@3600rpm
- Maximum torque: 350Nm@1600-2400rpm

EXTERIOR

- 17" alloy wheels
- Body coloured mirrors with indicators
- Exterior grade badge
- Front fog lights
- Headlights - halogen with auto off
- Privacy glass
- Rear spoiler
- Roof rails
- 220mm ground clearance

INTERIOR

- Air-conditioning - dual zone climate control
- Leather steering wheel/gear shift



- Manual seat height lifter - driver
- One touch electric folding rear seats
- Power windows, mirrors and steering
- Reclining rear seat
- Seat trim cloth (choice of black or grey)

ENTERTAINMENT / TECHNOLOGY

- Multi-Function Display Unit (MFD)
- Single in-dash CD player featuring:
 - AM/FM radio
 - 6 speakers

- MP3/WMA/iPod compatible
- Auxiliary jack - front centre console
- USB connection - front centre console
- Bluetooth®¹ wireless technology with:
 - Handsfree mobile communication
 - Audio streaming²
 - Voice command recognition
- Rear view reverse camera
- Steering wheel audio, Bluetooth®¹, cruise and MFD controls

FORESTER 2.0D-S

PERFORMANCE

- Symmetrical All-Wheel Drive
- Engine: 2.0-litre turbocharged diesel horizontally opposed Boxer engine
- Transmission: 6-speed manual
- Maximum power output: 108kW@3600rpm
- Maximum torque: 350Nm@1600-2400rpm

EXTERIOR

- 18" alloy wheels
- Electric sunroof
- Exterior grade badge
- Front fog lights
- Headlights - self-levelling Xenon with auto off (dusk sensing)
- Heated door mirrors with indicators
- Rain sensing wipers
- Rear spoiler
- Roof rails
- 220mm ground clearance

INTERIOR

- Air-conditioning - dual zone climate control
- Leather steering wheel/gear shift
- Powered rear gate



- Power windows, mirrors and steering
- Rain sensing front windscreen wipers
- Reclining rear seat
- Seat trim leather³ (choice of black or grey - perforated seat inserts)
- 8-way power seat - driver and front passenger
- Heated seats - driver and front passenger
- One touch electric folding rear seats

ENTERTAINMENT / TECHNOLOGY

- Multi-Function Display Unit (MFD)
- Multi-information in-dash satellite navigation system featuring:
 - AM/FM radio

- 6 speakers
- Single CD player
- MP3/WMA/iPod compatible
- 6.1" touch screen
- Auxiliary jack - front centre console
- USB connection - front centre console
- Bluetooth®¹ wireless technology with:
 - Handsfree mobile communication
 - Audio streaming²
 - Voice command recognition
- Rear view reverse camera
- Smart key with push button start ignition
- Steering wheel audio, Bluetooth®¹, cruise and MFD controls

1. Bluetooth® is a registered trademark of Bluetooth SIG Inc. System operation ability is subject to the Bluetooth® wireless technology specification of individual's phone. 2. There may be restrictions on features available for certain models that are not fully compliant with AVCRP. 3. Some parts of the seating are not full natural leather.

TECHNICAL SPECIFICATIONS¹ - FORESTER RANGE

MODEL		2.0i/2.5i	2.0i-L/2.5i-L	2.5i-S	2.0XT	2.0XT Premium	2.0D	2.0D-L	2.0D-S	
TRANSMISSION										
2.0-litre 6-speed manual transmission		•	•				•	•	•	
2.0-litre Lineartronic™ CVT					•	•				
2.5-litre Lineartronic™ CVT		•	•	•						
ENGINE										
Engine type		Horizontally-opposed Boxer 4-cylinder, petrol engine			Direct injection, turbocharged horizontally-opposed Boxer 4-cylinder, petrol engine		Turbocharged horizontally-opposed Boxer 4-cylinder, diesel engine			
Valve mechanism		DOHC with Dual AVCS (MT) / DOHC with AVCS (CVT)		DOHC with AVCS	DOHC with Dual AVCS		DOHC			
Bore x stroke	mm	84 x 90 (MT) / 94 x 90 (CVT)		94 x 90	86 x 86		86 x 86			
Capacity	cc	1995 (MT) / 2498 (CVT)		2498	1998		1998			
Compression ratio		10.5:1 (MT) / 10:1 (CVT)		10:1	10.6:1		16:1			
Fuel tank capacity	litres	60								
Fuel system		Multi point sequential injection			Direct injection		Common rail direct injection			
Fuel requirement	RON	90			95		Diesel			
PERFORMANCE²										
Maximum power output (DIN)	kW/rpm	110kW@6200rpm (MT) / 126kW@5800rpm (CVT)		126kW@5800rpm	177kW@5600rpm		108kW@3600rpm			
Maximum torque (DIN)	Nm/rpm	198Nm@4200rpm (MT) / 235Nm@4100rpm (CVT)		235Nm@4100rpm	350Nm@2400-3600rpm		350Nm@1600-2400rpm			
Acceleration ³ 0 - 100 km/h	seconds	10.6 (MT) / 9.9 (CVT)		9.9	7.5		10.2			
Electronic Throttle Control system (ETC)		Drive-by-wire								
Fuel consumption (ADR81/02) ⁴ combined	l/100km	7.2 (MT) / 8.1 (CVT)		8.1	8.5		5.9			
	urban	8.9 (MT) / 10.2 (CVT)		10.2	11.2		7.3			
	extra urban	6.4 (MT) / 6.8 (CVT)		6.8	7		5.2			
CO ₂ emissions (ADR81/02)	combined (g/km)	168 (MT) / 187 (CVT)		187	197		156			
Emission standards		EURO5								
SYMMETRICAL ALL-WHEEL DRIVE										
Type	Manual	Centre Differential with a Viscous Limited Slip Differential			n/a		Centre Differential with a Viscous Limited Slip Differential			
Type	Auto	Active Torque Split			n/a		n/a			
TRANSMISSION										
Gear ratio	1st	3.818 (MT) / 3.581 (CVT)		3.581	3.505		3.454			
	2nd	1.947 (MT) / Continuously variable (CVT)		Continuously variable	Continuously variable		1.888			
	3rd	1.296 (MT) / Continuously variable (CVT)		Continuously variable	Continuously variable		1.062			
	4th	1.029 (MT) / Continuously variable (CVT)		Continuously variable	Continuously variable		0.785			
	5th	0.825 (MT) / Continuously variable (CVT)		Continuously variable	Continuously variable		0.634			
(S# = SI-DRIVE Sports Sharp Mode)	6th	0.738 (MT) / 0.618 (CVT)		0.618	0.611 (S#0.968)		0.557			
	7th	n/a			(S#0.785)		n/a			
	8th	n/a			(S#0.611)		n/a			
Gear ratio - reverse		4.072 (MT) / 3.667 (CVT)		3.667	2.345		3.636			
Final reduction gear ratio		4.444 (MT) / 3.900 (CVT)		3.900	4.111		4.444			
STEERING										
Steering		Electric power steering								
Minimum turning circle (kerb to kerb)	m	10.6								
SUSPENSION										
Type	Front	McPherson strut type, independent suspension								
	Rear	Double wishbone type, independent suspension								
BRAKES										
Type	Front	Ventilated disc brake								
	Rear	Solid disc brake		Ventilated disc brake		Solid disc brake		Ventilated disc brake		
Brake booster type		Tandem								
ABS		4-channel, 4-sensor ABS with Electronic Brakeforce Distribution								
WHEELS AND TYRES										
Tyre manufacturer		Yokohama		Bridgestone		Yokohama		Bridgestone		
Tyres (width, profile, size, load index and speed rating)		225/60 R17 99H		225/55 R18 98H		225/60 R17 99H		225/55 R18 98H		
Rim size		17x7J		18x7J		17x7J		18x7J		
Wheels		17"		18"		17"		18"		
Spare wheel		17"		18"		17"		18"		
MEASUREMENT										
Overall length	mm	4595								
Overall width	mm	1795								
Overall height	mm	1735								
Wheel base	mm	2640								
Front track	mm	1545								
Rear track	mm	1550								
Minimum ground clearance ⁵	mm	220								
Cargo volume - rear seat up/down	litres	422/1481		405/1457	422/1457	405/1457	422/1481		405/1457	
Tare mass ⁶	kg	1458 (MT) / 1488 (CVT)	1447 (MT) / 1479 (CVT)	1509	1589	1607	1510	1526	1560	
Seating capacity		5								
TOWING										
With trailer brakes	kg	1500			1800					
Without trailer brakes	kg	750								
Maximum tow ball down load	kg	150			180					

1. Subaru Australia reserves the right to change mechanical specification and equipment levels without notice. 2. All performance data measured using 95RON as required by Australian Design Rule 81/02. Vehicles tested in accordance with ADR 81/02. 3. Acceleration test performed under controlled conditions. 4. Fuel consumption figures calculated in accordance with Australian Design Rule 81/02. 5. Ground clearance at kerb weight. 6. Vehicle kerb weight and tare mass varies according to the types of optional equipment included.

MODEL FEATURE SPECIFICATIONS¹ - FORESTER RANGE

MODEL	2.0i/2.5i	2.0i-L/2.5i-L	2.5i-S	2.0XT	2.0XT Premium	2.0D	2.0D-L	2.0D-S
ENTERTAINMENT								
Single in-dash CD player featuring:	•	•		•		•	•	
AM/FM radio	•	•		•		•	•	
6 speakers	•	•		•		•	•	
MP3/WMA/iPod compatible	•	•		•		•	•	
Multi-information in-dash satellite navigation featuring:			•					•
AM/FM radio			•					•
MP3/WMA/iPod/DIVX compatible			•					•
Single CD player			•					•
6 speakers			•					•
6.1" touch screen			•					•
harman kardon ^{®7} entertainment system featuring:					•			
Multi-information in-dash satellite navigation					•			
AM/FM radio					•			
MP3/WMA/iPod/DIVX compatible					•			
8 speakers					•			
6.1" touch screen					•			
Bluetooth ^{®4} wireless technology with:	•	•	•	•	•	•	•	•
Handsfree mobile communication	•	•	•	•	•	•	•	•
Handsfree SMS ^{®8} read functionality			•		•			•
Audio streaming ⁹	•	•	•	•	•	•	•	•
Voice command recognition	•	•	•	•	•	•	•	•
Auxiliary jack - front centre console	•	•	•	•	•	•	•	•
USB connection - front centre console	•	•	•	•	•	•	•	•
WARRANTY								
3 year/unlimited km warranty	•	•	•	•	•	•	•	•

1. Subaru Australia reserves the right to change mechanical specification and equipment levels without notice. 2. The Australasian New Car Assessment Program (ANCAP) gives consumers consistent information on the level of occupant protection provided by vehicles in serious front and side crashes. 3. SRS: Supplemental Restraint System. Effective when used in conjunction with seat belts. 4. Bluetooth[®] is a registered trademark of Bluetooth SIG Inc. System operation ability is subject to the Bluetooth[®] wireless technology specification of individual's phone. 5. Overhead console with sunglass holder not available on 2.5i-L EyeSight[™] option. 6. Some parts of the seating are not full natural leather. 7. harman kardon is a registered trademark of HARMAN International Industries, Incorporated. 8. MAP (message access profile) required for Hands Free SMS read functionality. Not all mobile phones have MAP. Please refer to specifications of your mobile phone to see if it has MAP. Hands free SMS read functionality is only available when factory satellite navigation is fitted. 9. There may be restrictions on features available for certain models that are not fully compliant with AVCRP.

INTERIOR

TRIM COLOUR



GREY:
Cloth:
Available on 2.0i/2.5i, 2.0i-L/2.5i-L, 2.0D and 2.0D-L



GREY:
Leather with perforated seat inserts:
Available on Forester 2.5i-S, 2.0XT Premium and 2.0D-S



BLACK:
Cloth:
Available on 2.0i/2.5i, 2.0i-L/2.5i-L, 2.0XT, 2.0D and 2.0D-L



BLACK:
Leather with perforated seat inserts:
Available on Forester 2.5i-S, 2.0XT Premium and 2.0D-S

TRIM PANELS



MATT SILVER:
Available on all Forester models

ENTERTAINMENT



SINGLE IN-DASH CD PLAYER:
Forester 2.0i/2.5i, 2.0i-L/2.5i-L, 2.0XT, 2.0D and 2.0D-L



MULTI-INFORMATION IN-DASH SATELLITE NAVIGATION SYSTEM:
Forester 2.5i-S and 2.0D-S



harman kardon^{®7} ENTERTAINMENT SYSTEM: Forester 2.0XT Premium

ACCESSORIES

Freedom is in Subaru's DNA. But your DNA is unique. That's why we give you the freedom to exploit your individuality with Subaru Genuine Accessories. Factory approved by Subaru - for your Subaru - they can enhance your vehicle to meet your lifestyle. From the practical, to the purely aesthetic, the possibilities are endless. And naturally when you purchase Subaru Genuine Accessories, you are protected by our manufacturer's warranty.

GENUINE ACCESSORIES, GENUINE WARRANTY

All Subaru Genuine Accessories come with a manufacturer's warranty:

- When you have them fitted at the time you purchase your new vehicle (or at your first scheduled service by your Subaru Retailer) you get a three-year/unlimited-kilometre warranty.
- When you purchase accessories and have them fitted by your Subaru Retailer any other time you get a two-year/unlimited-kilometre warranty.
- When you purchase accessories from your Subaru Retailer at any other time, you get a 12-month/unlimited kilometre warranty.

For full warranty, pricing and applicability information visit us at subaru.com.au. Our goods come with guarantees that cannot be excluded under the Australian Consumer Law. You are entitled to a replacement or refund for a major failure and for compensation for any other reasonably foreseeable loss or damage. You are also entitled to have the goods repaired or replaced if the goods fail to be of acceptable quality and the failure does not amount to a major failure.

Subaru Australia reserves the right to vary vehicle specifications, accessory range and standard features in Australia from those detailed in this brochure. Vehicles shown in this brochure may be fitted with accessories available at additional cost.

SUBARU.COM.AU FOR FULL DETAILS ON THE TAILOR-MADE ACCESSORIES AVAILABLE FOR YOUR SUBARU MODEL.



FRONT GRILLE (BLACK)



BUMPER UNDER GUARD (FRONT)



BUMPER UNDER GUARD (REAR)
(N/A TOWBAR & REVERSE PARK ASSIST)



FRONT UNDER SPOILER - AVAILABLE ON
FORESTER 2.0XT & 2.0XT PREMIUM



CARBON PANEL INTERIOR TRIM - CVT



CARBON PANEL INTERIOR TRIM - MT



17" ALLOY SET - ACCESSORY



17" ALLOY SET



CARPET MAT SET



BUMPER CORNER GUARDS



BODY SIDE MOULDING



DOOR VISOR



MUD FLAP SET (FRONT) (N/A SIDE SKIRTS)



PET PROTECTION SEAT COVER



BOOTLIP & BUMPER PROTECTOR



FOG LAMP KIT - NON-AUTO LIGHT



CARGO STEP PANEL (RESIN)



CARGO TRAY (LOW DISH)



TAIL PIPE COVER



TOW BAR KIT



CARGO ROOM NET (FLOOR)



CARGO ROOM NET (REAR SEAT BACK)



CARGO ROOM NET (REAR TAILGATE)



CARGO ROOM NET (SIDE X2)



THULE GO BOX



THULE GO PACK SET (4 BAGS)



ROOF CROSS BARS



WATER CRAFT HOLDER



UNIVERSAL LOCKING ARMS



SURFBOARD CARRIER



LUGGAGE RACK (SMALL & LARGE)



LUGGAGE RACK - NET AND STRAPS



LUGGAGE POD MOTION 200 (SILVER)



LUGGAGE POD MOTION 800 (BLACK)



LUGGAGE POD ATLANTIS 780 (GLOSS BLACK) (LARGE)



CARGO BARRIER



BICYCLE HOLDER (FORK MOUNT)



BICYCLE HOLDER (UPRIGHT)



TOW BAR MOUNTED BIKE CARRIER (TWO BIKES)



TOW BAR MOUNTED BIKE CARRIER (THREE BIKES)



SIDE STEP - STEP UP



REAR PARKING ASSIST



AVN NAVIGATION SYSTEM



MULTI FUNCTION DISPLAY SENSORS - AVAILABLE IN WHITE/BLACK/SILVER/RED ONLY



SECURITY ALARM SYSTEM



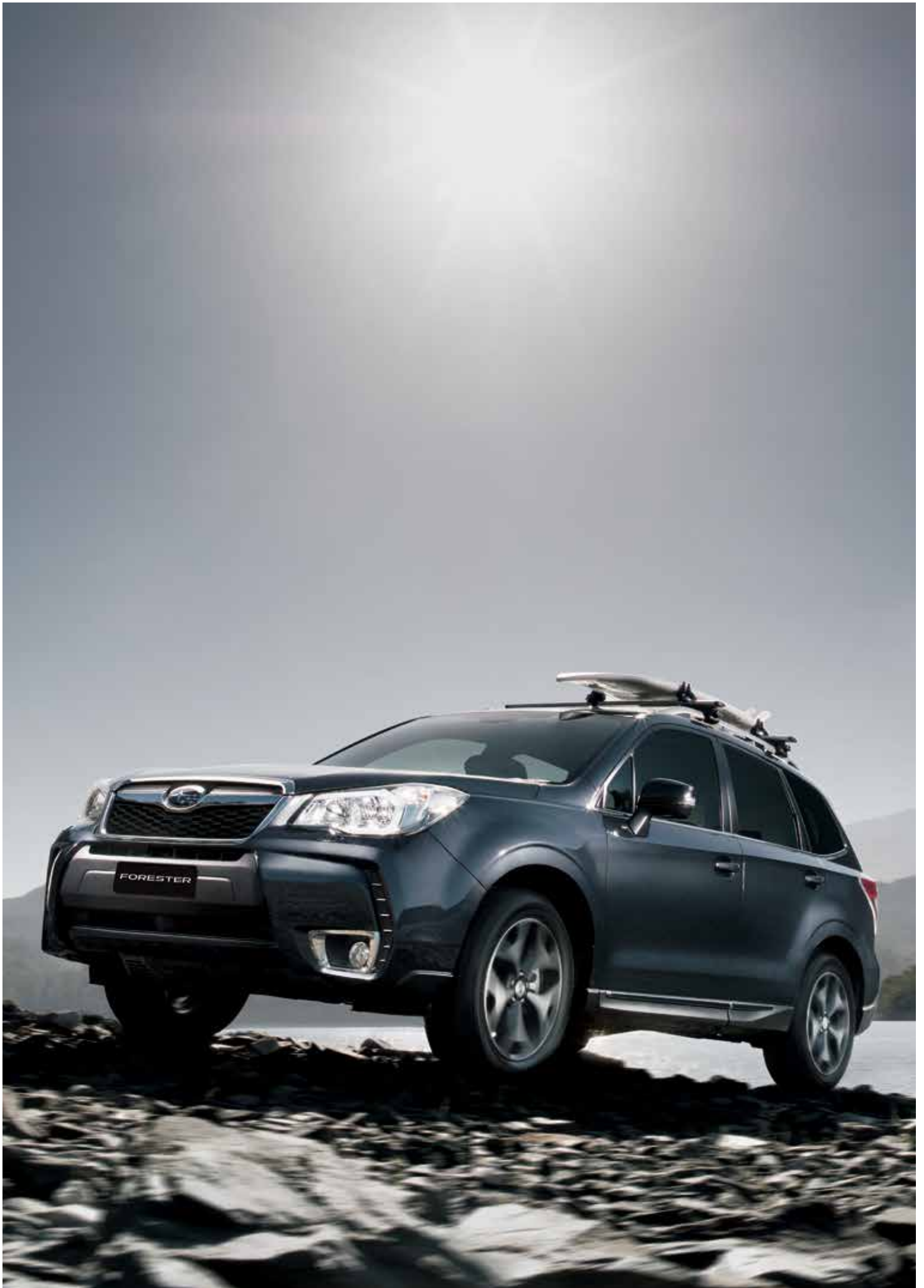
WHEEL LOCK NUTS



ADVENTURE PORTABLE FRIDGE (14 LITRE) 12V ONLY



FIRST AID KIT



MODEL SHOWN: Forester 2.0XT

COLOUR IS EVERYTHING

One of the final choices – but one of the most important! The colour you choose for your Forester makes a bold statement about who you are. So we've made sure you've got lots of ways to express yourself – with a wide range of colours to make your Forester more... you.

All colours available in all models.



SATIN WHITE PEARL



ICE SILVER METALLIC



BURNISHED BRONZE METALLIC



JASMINE GREEN METALLIC



VENETIAN RED PEARL



DARK GREY METALLIC



DEEP CHERRY PEARL



CRYSTAL BLACK SILICA



MARINE BLUE PEARL