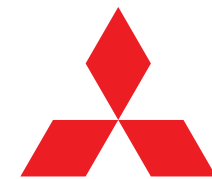


# LANCER



**MITSUBISHI  
MOTORS**



**LOVE THAT CAR**



## WHAT MAKES LANCER SO POPULAR?

For over 20 years, Lancer has been one of Australia's favourite small cars. Why? Because of its style and technology, its motorsport heritage and incredible value for money. Not to mention that it keeps on getting better, model after model.

Lancer's reputation was built through generations of motorsport, and forged in competition – yet its road manners are somewhat refined. Yes, Lancer is agile yet beneath the athletic contours, this car is entirely accommodating. With models that range from ES Sport, LS and XLS sedans to the sporty and exciting GSR hatch, there's a Lancer that's sure to suit every need.



### COMFORT FOR FAMILY AND FRIENDS.

When you sit inside the new Lancer you'll be wrapped in a feeling of space, comfortably seating 5 adults. Clever compartments throughout the cabin keep your valuables neatly hidden away and even load space is aided by 60/40 split rear seats.

Lancer has the very latest in-dash MP3 player-compatible audio system with iPod and USB connectivity. The Mitsubishi link system also allows you to make and receive calls hands-free, with Bluetooth. We all like to stay connected.

### SMART KEY

Lancer LS, XLS and GSR models offer complete keyless operation- recognising the key within a 70cm radius. Lock and unlock the doors or open the boot, all with the Smart Key safely tucked in your pocket or bag.

### TODAY'S ENGINE TECHNOLOGY

Your Lancer is powered by the latest in engine technology, the Mitsubishi Innovative Valve timing Electronic Control – MIVEC 2.0 litre petrol in ES Sport and LS or 2.4 litre petrol in XLS and GSR. MIVEC engine technology minimises fuel consumption without sacrificing power and performance.

### AUTO SENSORS

A rain sensor in the XLS and GRS models automatically detects moisture on the windscreen and, according to the amount of rain falling, will activate the wipers at the appropriate speed. The headlamps will automatically switch on when it gets dark or when travelling through a tunnel. The fewer things that distract you from the road ahead, the better.

### CVT AUTOMATIC TRANSMISSION

Continuously Variable Transmission (CVT) offers infinitely variable gear ratios that allow the engine to always operate at optimum rpm, irrespective of the vehicle's speed. This maximises power and economy, helping to ensure a smooth, stable ride with seamless gear changes.

Sports Mode allows you to switch between the ease of a CVT automatic and the control of a manual transmission without a clutch. Choices, that's what you want.



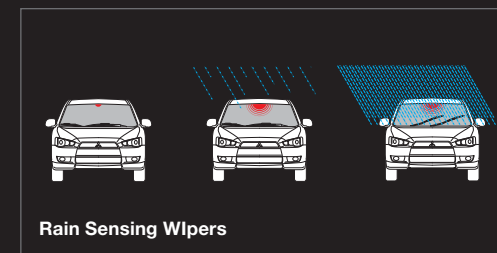
Smart Key



60/40 Split Fold Rear Seats  
(overseas model shown)



Dusk Sensing Headlamps



Rain Sensing Wipers



## AND THE LOOKS KEEP ON COMING.

With its aggressive front face and aerodynamic bodylines, Lancer makes a moving statement. And when you add the side air dams, rear spoiler and impressive 18" 8-spoke alloy wheels the XLS is not about to sit in a drive way all day.

The refined and stylish LS features 16" 10-spoke alloy wheels, front fog lamps and chrome door handles while in ES Sport no detail has been overlooked, with standard features including new design 16" 10-spoke alloy wheels, rear sports spoiler, side air dam, chrome exhaust tip and door mirrors with turn lamp indicators.

And then there's Lancer GSR. Its sportback styling adds extra punch with the same 2.4 litre MIVEC engine available in XLS, 18" 10-spoke alloy wheels, rear sports spoiler, chrome grille surround and loads more.

# SAFETY FROM EVERY ANGLE.

Lancer has a long list of advanced safety features. But it's the way they work together that makes Lancer such a safe vehicle for driver and occupants.

Side turn indicators have been added to door mirrors, further enhancing your driving safety. A reversing camera appears automatically within the audio system display on LS and GSR whenever reverse gear is engaged, while the Multi Media Communication System (MMCS) available on XLS will display the rear view camera's view on its in-dash full colour screen.

Lancer has seven SRS airbags to protect the driver and occupants – driver and front passenger airbags, side airbags, curtain airbags and a driver knee airbag in the event of a head-on collision, absorb the force of impact.

Mitsubishi's Reinforced Impact Safety Evolution (RISE) body system with an integrated chassis is a highly rigid, one-piece shell.

RISE combines a rigid ladder frame and side impact bars with collision absorbing joints. The super strength cabin is designed to cocoon you and your passengers in the event of an accident.

Staying connected in a Lancer is easy, with minimal interruption to your driving. The Mitsubishi Multi Communication System (MMCS) is an integrated communication and media system that provides voice activated satellite navigation, voice activated Bluetooth®, audio control, iPod connectivity and a host of other features is all controlled via a 7" full colour in-dash touch screen. Integrated with a 9-surround sound speaker Rockford Fosgate® premium audio system, MMCS (XLS only) allows USB connectivity so you can easily access your music through the audio system, whether it's on an iPod, Smartphone, MP3 player or USB stick.

What would a car be without the latest sounds?

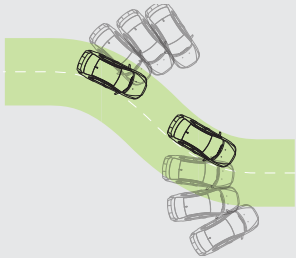


## ANCAP 5 STAR RATING.

ANCAP stands for Australasian New Car Assessment Program and the Lancer has been awarded the highest rating possible.



### ASC



#### Active Stability Control (ASC)

ASC maintains stability and minimises loss of control when cornering by automatically recognising understeer and oversteer. It then applies the brakes to the appropriate wheels to keep you on line and in control through corners.

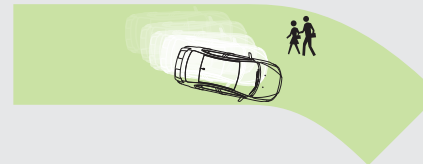
### ATC



#### Active Traction Control (ATC)

ATC helps maintain traction on slippery surfaces. When sensing loss of traction in an independent wheel, ATC applies braking force to that wheel and sends extra power and torque to other wheels that have traction, to keep you moving and in control.

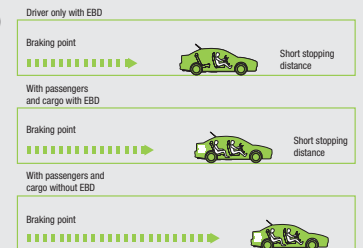
### ABS



#### Anti-lock Braking System (ABS)

Lancer is ready to perform if you're faced with the unexpected. ABS helps the driver maintain steering control and avoid hazards by adjusting the braking pressure. ABS prevents the wheels from locking up under hard braking or during an emergency stop.

### EBD



#### Electronic Brakeforce Distribution (EBD)

EBD helps you stay in control should you need to stop quickly. When carrying passengers or heavier loads, EBD distributes braking force between the front and rear wheels, to ensure optimum braking and reduce stopping distance.

# LANCER ES SPORT



## Interior

Soft touch front door trim with leather insert  
 Chrome inside door handles  
 Front map lamps  
 Rear room lamp  
 Boot room lamp

## Comfort & Convenience

Keyless entry central door locking with 2 transmitters  
 Steering wheel audio & phone controls  
 Cruise control with steering wheel remote controls  
 Tilt adjustable steering wheel  
 Climate control air-conditioning  
 Pollen filter  
 Power windows – front and rear with auto up and down for driver  
 Rear window demister  
 Digital clock  
 Accessory 12V socket on console  
 Multi-information display
 

- Average speed and fuel consumption
- Engine coolant temperature and odometer
- Distance until empty
- Maintenance schedule
- Outside temperature

Twin trip meter  
 Low fuel warning  
 Seatbelt warning lamp with buzzer – driver and front passenger  
 Coat hook (rear driver's side)  
 Sunvisor with mirror, lid and ticket holder – driver and front passenger  
 Day/Night rear vision mirror  
 Driver's foot rest  
 Retractable 4 x assist grips

## Storage

Glovebox  
 Deluxe leather look floor console with lidded compartments  
 Cup holder with lid for front seats  
 Door pockets for front and rear doors with bottle holders for front

# LANCER ES SPORT

## (KEY FEATURES)

### Mechanical

2.0L DOHC 16 valve MIVEC engine  
 5 speed manual transmission or optional Continuously Variable Transmission (CVT) with Sports Mode  
 Electric power steering (ES Sport & LS only)

### Exterior

16" 10-spoke alloy wheels – machined black  
 Colour-coded door handles  
 Colour-coded electric door mirrors with turn lamp  
 High mount stop lamp  
 Rear sports spoiler (ES Sport & XLS only)  
 Ralliart style front chrome grille surround  
 Black Ralliart style radiator grille  
 Chrome exhaust tip (ES Sport & XLS only)  
 Side air dam (ES Sport & XLS only)

# LANCER LS (ADDITIONAL TO ES SPORT)



## Exterior

16" 10 spoke alloy wheels – silver  
 Chrome door handles  
 Chrome belt line moulding  
 Front fog lamps

## Interior

Instrument panel and door trim garnish – gloss black  
 High contrast instrument meter  
 Leather wrapped steering wheel  
 Leather wrapped shift knob

## Audio & Media

Display audio system with single CD, MP3 and AM/FM radio  
 6 speakers (4 speaker + 2 tweeters)

# LANCER XLS (ADDITIONAL TO LS)



## Mechanical

2.4L DOHC 16 valve MIVEC engine  
 Gear paddle shifters (CVT only)  
 Power steering  
 Sport tuned suspension

## Exterior

18" 8-spoke alloy wheels  
 Privacy glass rear and side  
 Black beltline moulding  
 Rear sports spoiler  
 Chrome exhaust tip  
 Side air dam

## Interior

Alloy sports pedals

## Seating

Cloth seat trim  
 Front bucket seats  
 Driver seat slide, recline and height adjust  
 Front passenger seat slide and recline adjust  
 Front passenger's seat back pocket  
 60/40 Split fold rear seat  
 Rear centre arm rest with cup holder x 2  
 Height adjust head-restraint – front and rear

## Audio & Media

Single CD with MP3 and AM/FM radio  
 iPod connectivity  
 USB connectivity  
 4 speakers  
 Bluetooth® with voice activation and audio streaming\*

## Safety

Reinforced Impact Safety Evolution (RISE) body  
 Driver and front passenger SRS airbags (dual stage)  
 Side and curtain SRS airbags  
 Driver knee airbag  
 Active Stability Control (ASC)  
 Active Traction Control (ATC)  
 Anti-lock Braking System (ABS) with Electronic Brakeforce Distribution (EBD)  
 Brake Override System (Smart Brake)  
 Hill Start Control (HSC) (ES Sport & LS CVT only)  
 Emergency stop signal  
 Driver and front passenger seatbelts
 

- 3 point ELR
- Force limiters
- Pretensioners
- Adjustable shoulder anchor

 Rear seatbelts
 

- 3 Point ELR x 3
- ALR x 2

 Childproof rear door locks  
 Child restraint tether anchor points x 3  
 ISO-Fix attachments for outer rear seats x 2

## Security

Anti-theft encrypted engine immobiliser  
 \*Bluetooth® phone connectivity depends on your phone compatibility.

## Comfort & Convenience

Smart Key – keyless operating system with 2 transmitters

## Seating

Leather seat facings  
 Front sports seats  
 Front seat heaters  
 Power driver seat with slide, recline and height adjustment

## Safety

Reversing camera  
 Rear view camera interface in display audio

## Comfort & Convenience

Automatic rain sensing wipers  
 Automatic dusk sensing headlamps

## Audio & Media

Rockford Fosgate® Premium Audio System includes 9 speakers (4 speakers + 4 tweeters + 1 subwoofer)  
 Mitsubishi Multi Communication System (MMCS) with satellite navigation

## Safety

Reverse parking sensors  
 Electrochromatic mirror

# LANCER GSR



Automatic rain sensing wipers  
 Automatic dusk sensing headlamps  
 Multi-information display
 

- Average speed and fuel consumption
- Engine coolant temperature and odometer
- Distance until empty
- Maintenance schedule
- Outside temperature

## Twin trip meter

Low fuel warning  
 Seatbelt warning lamps with buzzer – driver and front passenger  
 Coat hook (rear driver's side)  
 Sunvisor with mirror, lid and ticket holder – driver and front passenger  
 Day/Night rear vision mirror  
 Driver's foot rest  
 Retractable 4 x assist grips  
 Electric tailgate opener

## Storage

Glovebox  
 Floor console with storage box and lid  
 Cup holder with lid for front seats  
 Door pockets for front and rear doors with bottle holders for front  
 Deluxe leather look floor console with lidded compartments

## Seating

Cloth seat trim  
 Sports type front seats  
 Front passenger, seat slide and recline adjust  
 Front passenger's seat back pocket  
 60/40 Split fold rear seat  
 Rear centre arm rest with cup holder x 2  
 Height adjust head-restraint – front and rear

## Audio & Media

Display audio system with single CD, MP3 and AM/FM radio  
 6 speakers (4 speakers + 2 tweeters)  
 Bluetooth® with voice activation and audio streaming\*  
 USB connectivity

## Safety

Reversing camera  
 Rear view camera interface in display audio  
 Reinforced Impact Safety Evolution (RISE) body  
 Driver and front passenger SRS airbags (dual stage)  
 Side and curtain SRS airbags  
 Driver knee airbag  
 Active Stability Control (ASC)  
 Active Traction Control (ATC)  
 Anti-lock Braking System (ABS) with Electronic Brakeforce Distribution (EBD)  
 Brake Override (Smart Brake)  
 Mechanical brake assist system  
 Emergency stop signal  
 Driver and front passenger seatbelts
 

- 3 Point ELR
- Force limiters
- Pretensioners
- Adjustable shoulder anchor

## Rear seatbelts

- 3 Point ELR x 3
- ALR x 2

## Childproof rear door locks

Child restraint tether anchor points x 3  
 2 x ISO-Fix attachments for outer rear seats

## Security

Anti-theft encrypted engine immobiliser

\*Bluetooth® phone connectivity depends on your phone compatibility

# LANCER GSR

## Mechanical

2.4L DOHC 16 valve MIVEC engine  
 5 speed manual transmission or optional Continuously Variable Transmission (CVT) with Sports Mode  
 Steering wheel mounted gear paddle shifters (CVT only)  
 Power steering  
 Sport tuned suspension

## Exterior

18" 8-spoke alloy wheels  
 Colour-coded handles  
 Colour-coded electric door mirrors with turn lamp  
 High mount stop lamp  
 Rear sports spoiler  
 Ralliart style front chrome grille surround  
 Black Ralliart style radiator grille  
 Front fog lamps  
 Chrome exhaust tip  
 Side air dam  
 Privacy glass rear and side

## Interior

Leather wrapped steering wheel  
 Leather wrapped shift knob  
 Alloy sports pedal  
 Soft touch front door trim with leather insert  
 Instrument panel and door trim garnish – gloss black  
 Chrome inside door handles  
 Chrome parking brake lever button  
 High contrast instrument meter  
 Front map lamps  
 Rear room lamp  
 Boot room lamp  
 Cargo cover  
 Rear adjustable cargo floor

## Comfort & Convenience

Smart Key – keyless operating system with 2 transmitters

Steering wheel audio & phone controls  
 Cruise control with steering wheel remote controls  
 Tilt adjustable steering wheel  
 Climate control air conditioning  
 Pollen filter  
 Power windows – front and rear with auto up and down for driver  
 Rear window demister  
 Digital clock  
 Accessory 12V socket on console



Rear Spoiler Sports Accent Trim (Vinyl)



Towbar Package



Embroidered Carpet Mats



Boot Liner – Hard Plastic



Cigarette Lighter



Front Door Weathershields



Chrome Door Handle Cover



Carbon Fibre Look – B Pillar Insert



Rear Parking Assistance Sensors



Rear Boot Spoiler – Hi-Rise Style



50mm Chrome Towball



Side Protection Moulding



Rear Bumper Protection Strip



Floor Illumination – Front



Sports Gearshift Knob – Silver Alloy & Black Leather



Full-Size Spare Wheel & Accommodation Kit



Parcel Net



Boot Flap Scuff Guard



Neoprene Seat Covers – Front & Rear

# YOUR LANCER. YOUR LOOK.

Add your own style to your Lancer sedan or hatch with our extensive range of accessories. Ask your Mitsubishi dealer or visit [www.mitsubishi-motors.com.au](http://www.mitsubishi-motors.com.au) for the complete list available. Mitsubishi Genuine Accessories go through an extensive program of design, development and stringent testing

to ensure they meet all applicable government standards as well as Mitsubishi's own rigorous engineering and specifications and performance targets. Using Mitsubishi Genuine Accessories will ensure you get the best quality accessories that are both as durable and reliable as the Mitsubishi you drive.



Pictures shown for illustration purposes and may not be product specific. Please check with your Mitsubishi dealer for specific model applications.

## COLOUR YOUR LANCER



TITANIUM (M)



COOL SILVER (M)



WARM SILVER (M)



RED (M)



LIGHTNING BLUE (P)



BLACK (P)



WHITE

METALLIC (M) AND PEARLESCENT (P) PAINTS ARE OPTIONAL EXTRA

## INTERIORS



ES SPORT & GSR  
– Black Cloth Knit



LS & XLS  
– Black Leather



5-Speed manual



CVT with Sports Mode

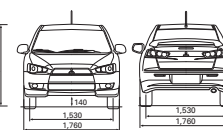
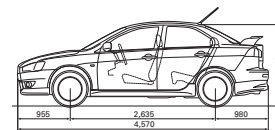
## TRANSMISSIONS

## KEY SPECIFICATIONS

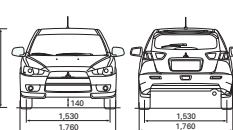
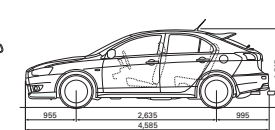
	2.0L MIVEC petrol ES Sport/LS	2.4L MIVEC petrol XLS/GSR
<b>Engine</b>		
Maximum power (kW)	110kW@6000rpm	125kW@6000rpm
Maximum torque (Nm)	197Nm@4200rpm	226Nm@4100rpm
<b>Turning Circle (m)</b>		
Kerb to kerb	10	10
<b>Maximum Towing Capacity</b>		
With trailer brakes (kg)	1,000	
Without trailer brakes (kg)	550	
<b>Fuel Consumption* - ADR81/02 (Litres per 100kms) combined</b>		
Manual Transmission	6.9	8.7/8.8
Continuously Variable Transmission (CVT)	7.2	8.5/8.9
Fuel Tank Capacity (L)	59	59
<b>Gross Vehicle Mass (kg)</b>		
Manual Transmission	1,850	1,850/1,900
Continuously Variable Transmission (CVT)	1,850	1,850/1,900
<b>Kerb Mass (kg)</b>		
Manual Transmission	1,295	1,320/1,360
Continuously Variable Transmission (CVT)	1,325	1,350/1,390
<b>Cargo Area</b>		
Boot Capacity (L) – Seat Up	400	377/330

\* These figures are obtained from controlled tests conducted by Mitsubishi Motors Australia to Design Rule ADR81/02 and are provided to assist you in comparing the fuel consumption of Lancer with other vehicles. Subject to state regulation and towbar designs. A Weight Distribution Hitch (WDH) is recommended for towball downloads exceeding 135kg. For further information, please refer to the Lancer owners manual.

## LANCER SEDAN DIMENSIONS (MM)



## LANCER GSR DIMENSIONS (MM)



5 year or 100,000km New Vehicle Warranty (whichever occurs first). Service conditions apply. \* 4 years or 60,000km Capped Price Servicing (whichever occurs first). Covers all items specified under the standard "Maintenance for normal operating conditions" scheduled detailed in the service and warranty booklet. Additional service/repair items (if required) are at additional cost. ^ 1 year Roadside Assist (Service conditions apply). For purchases of new Mitsubishi vehicles after 1st October 2012, your initial 12 month roadside assist will be extended for a period of 12 months from the date of the most recent eligible Capped Price Service for that vehicle performed at an authorised Mitsubishi dealer. Roadside assist, if extended in accordance with these items, is available for a maximum of up to 5 years. Conditions apply. Offer subject to change without notice. Excludes Government, Rental and National Fleet customers.

Always consult your authorised Mitsubishi Dealer for the latest details on specifications, options, prices, availability and conditions on New Vehicle warranty. All product illustrations and specifications referred to herein are believed to be correct at the time of publication approval. Subject to any applicable Federal, State or Territory Laws or ordinances, which may apply from time to time, Mitsubishi Motors Australia Limited reserves the right, without notice, or obligation, to discontinue or make changes to designs, specifications, colours and materials of the options and products referred to herein at any time without incurring any liability to any purchaser thereof.



# DIAMOND ADVANTAGE

# LOVE THAT CAR