

Accent.





Exceptional standards.

We have one goal – to be Australia’s most loved car company.

And to get there, we’re driven by a simple philosophy that life’s most incredible moments shouldn’t be reserved for a select few. Everyone should be able to experience an exciting and enjoyable drive.

So how do we make that happen? We start by pushing our own boundaries, by making premium the new standard. And by engineering the most enjoyable ride possible.

The Accent is everything you could ask for in a small, yet highly energetic car. Put yourself in the driver’s seat and get ready to have the style, comfort and technology of the Accent to set your world in motion.

You can be sure we’ve put it through its paces. With an extensive local development program, the Accent is perfectly suited to Australian conditions. Korean engineering and Australian testing – a global contribution to this local hero.

Accent.

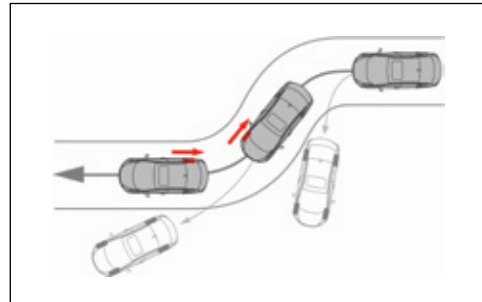
Safety first, and always.

At Hyundai, we believe maximum safety should come as standard. That's why we designed the Accent to achieve Australia's highest possible safety rating – 5-star ANCAP – thanks to an array of active and passive safety features. So the only thing you need do is sit back and enjoy the ride.

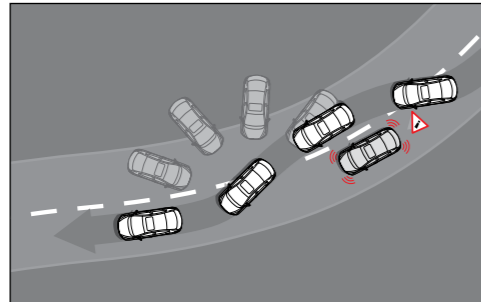
The Accent also boasts a comprehensive range of active safety technologies that are constantly working behind the scenes, ready to spring into action and assist you during a difficult driving situation.

Electronic Stability Control (ESC) with Traction Control System (TCS): Senses a loss of wheel grip (such as when skidding) and then applies individual wheel braking, together with engine and transmission adjustments, to help you get the vehicle back on its intended course.

Vehicle Stability Management (VSM) system: Helps maintain control of the vehicle by applying steering assistance, to help guide you to the correct steering position in case of a skid, to help you regain control.



ESC incorporating TCS



VSM (Vehicle Stability Management)



6 airbags
Overseas model interior shown

Sleek and stylish design.

With your choice of a hatch or sedan, the Accent has been designed to make an immediate, great first impression.

Its streamlined and aerodynamic profile is based on Hyundai's 'fluidic sculpture' design language. The sleek dynamic lines and deep grooves create a sporty futuristic look with a sense of constant motion.

Strongly defined wheels, a distinctive hexagonal grille and aggressive headlamps give the Accent an eye-catching and commanding road presence.



Hatch



Sedan



Accent.



A smart, feature-packed interior.

The striking good looks and energetic styling that make the Accent such a headturner from the outside, continue inside with a modern and ergonomic interior that's packed with features and comforts.

The symmetrical Y-shaped upper dash is drawn with sweeping lines that flow downward toward the centre stack and shift lever, creating a focus for the intuitive 5" touchscreen audio system that provides radio and MP3 capability, 4 speakers and Apple CarPlay™¹ compatibility.

You'll also have all the connectivity you want with iPod®, USB and AUX inputs whilst Bluetooth® connectivity² allows hands-free calling and audio streaming.

Every control and button has been positioned for easy use and navigation, so you can focus on driving but still get the most fun out of every trip.



Top: Sunglass compartment
Bottom: 5" touchscreen

Top: Steering wheel mounted controls
Bottom: iPod® and AUX/USB support

1. Apple CarPlay™ functionality requires software update. Apple CarPlay™ requires iPhone 5® or subsequent model (lightning cable) in order to operate. Apple®, iPhone® and iPod® are registered trademarks of Apple Inc., registered in the U.S. and other countries. 2. Bluetooth® is a registered trademark of Bluetooth SIG, Inc. Please check your Bluetooth® device's capabilities to ensure compatibility.

Driven by fun.

The Accent now comes with a more powerful 1.6L GDI Gamma engine, replacing the 1.4L MPi Kappa engine. Both the Accent hatch and sedan are available with your choice of a 6 speed manual or automatic transmission.

Specifically tuned for Australian driving conditions, the Accent delivers better handling, and thus a more responsive and exciting ride and driving experience all round.

Plus with 16" sports alloy wheels, it brings a distinctive sporty style to the streets.

Are you ready for some fun?



1.6L petrol engine

103 Maximum power
kW/6,300 rpm

167 Maximum torque
Nm/4,850 rpm

Accent.

Style, your way.

Engine and transmission

1.6 litre petrol (manual & auto)

Accent Sport

Key specifications:

Safety

- Electronic stability control (ESC) including: Anti-lock Braking System (ABS), Brake Assist System (BAS), Electronic Brakeforce Distribution (EBD), Traction Control System (TCS) and Vehicle Stability Management (VSM)
- 6 airbags
- Rear door child safety locks
- ISOFIX child restraint anchors
- Central locking

Interior and technology

- Apple CarPlay™ compatibility¹
- Bluetooth® phone connectivity²
- 5" touchscreen display
- AUX/USB audio input with iPod® compatibility
- Cruise control with steering wheel mounted controls
- Premium steering wheel and gear knob
- Power windows
- Retractable sunglasses compartment

Exterior and technology

- 16" alloy wheels
- Front chrome grille inserts
- Side mirrors with integrated indicators
- Rear wiper (hatchback only)
- Heated rear windshield

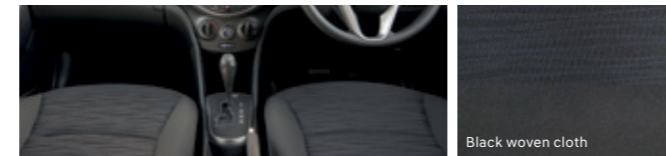


5" touchscreen



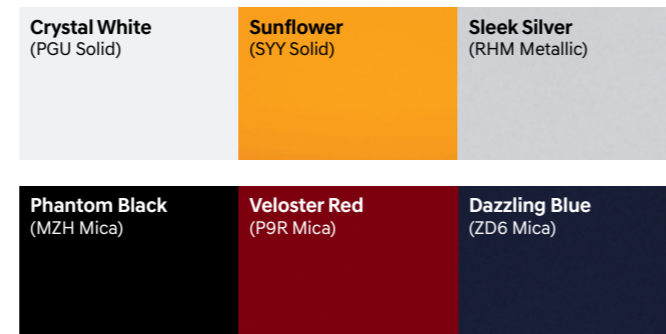
Steering wheel mounted controls

Accent Interior



Black woven cloth

Accent Exterior Colours³



Hyundai Genuine Accessories.

Your Accent isn't just a car. It's an extension of you. So make it as unique as you are, with Hyundai Genuine Accessories¹.

| Genuine Accessories | Hatch | Sedan |
|---|-------|-------|
| Technology | | |
| Auxiliary cable ² | • | • |
| iPad® holder ³ | • | • |
| Interior | | |
| Tailored carpet floor mats (set of 4) | • | • |
| Dash mat | • | • |
| Rubber cargo liner | • | • |
| Fabric rear bumper protector | • | • |
| Portable cooler (12 volt, 15 litre) ⁴ | • | • |
| Cargo organiser | • | • |
| Exterior | | |
| Headlight protectors (set of 2) | • | • |
| Bonnet protector | • | • |
| Tinted stylevisors (set of 4) | • | • |
| Front mudflaps (set of 2) ⁵ | • | • |
| Rear mudflaps (set of 2) ⁵ | • | • |
| Towbar, towball & trailer wiring harness ⁶ | • | – |
| Styling | | |
| 16" alloy wheels (sold separately, tyres not incl.) | • | • |
| Interior lighting | • | • |
| Roof Racks and Lifestyle | | |
| Whispbar™ quiet roof racks ⁷ | • | • |
| Roof mounted bike carrier ⁸ | • | • |
| Thule® bike rack (wheel on) ⁸ | • | • |
| Roof mounted kayak holder ⁸ | • | • |
| Ski & snowboard carrier ⁸ | • | • |
| Surfboard carrier ⁸ | • | • |
| Styling | | |
| First aid kit (4 pockets) | • | • |
| Rear park assist ⁹ | • | • |



Rubber cargo liner



Towbar, towball & trailer wiring harness⁶



Tailored carpet floor mats (set of 4)



Tinted stylevisors (set of 4)



Front & rear mudflaps (set of 2)⁵



Headlight protectors (set of 2)



Rear park assist⁹



Surfboard carrier⁸



Roof mounted bike carrier⁸



Whispbar™ quiet roof racks⁷



Ski & snowboard carrier⁸

1. All Hyundai Genuine Accessories are backed by a 5 year warranty if purchased at the time of a new Hyundai vehicle and fitted by an authorised Hyundai Dealer. All Hyundai Genuine Accessories are subject to warranty conditions. See your nearest Hyundai Dealer or visit our website at www.hyundai.com.au for full warranty terms and usage recommendations. 2. Auxiliary cable not suitable for Apple® devices. 3. iPad® is a registered trademark of Apple Inc. The iPad® holder has been designed to hold iPad® 1, 2, 3, 4 & iPad Air securely. To ensure occupants are protected in the event of a collision, the screen protector must be fitted to the iPad® when in use. iPad® not included. 4. Only suitable for use with retractable seatbelt. 5. Mudflaps cannot be fitted in conjunction with a full bodyskirt or rear skirt. 6. Maximum ball download 50kg. Towing capacity = 900kg braked, 850kg Auto & 900kg Manual unbraked. Towbar capacity subject to regulatory requirements, towbar design, vehicle design and towing equipment limitations. 7. Load capacity = 75kg distributed evenly over 2 bars. Roof racks should be removed when not in use. 8. Requires fitment of Whispbar™ quiet roof racks at additional cost. Bike, snowboard and surfboard not included. 9. Park assist is designed as driver assist aid only and should not be used as a substitute for skilled driving and safe parking practices (sensors do not pick up objects directly in front of the vehicle). While the park assist sensors monitor objects on approach, there may be occasions where blind spots affect the sensitivity of the sensors and as a result the area into which the vehicle is heading must be visually monitored by the driver at all times while parking.

1. **Apple CarPlay™** functionality requires software update. Apple CarPlay™ requires iPhone 5® or subsequent model (lightning cable) in order to operate. Apple®, iPhone® and iPod® are registered trademarks of Apple Inc., registered in the U.S. and other countries. 2. **Bluetooth®** is a registered trademark of Bluetooth SIG, Inc. Please check your Bluetooth® device's capabilities to ensure compatibility. 3. Colours shown are indicative only and may vary due to the printing process. Metallic and mica paint are optional extras at an additional cost.



Relax, we'll take it from here.

There's a reason why our iCare program has won awards¹. We built iCare around one simple, innovative idea. That comprehensive on-the-road care should come standard with every car – not just as an “optional extra”.

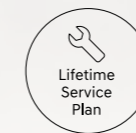
Our five-year, unlimited kilometre warranty² means you've got the freedom to go ahead and drive without having to keep an eye on the odometer.

Imagine knowing the maximum price of your next scheduled service, before pulling into the service centre. That's the advantage of our Lifetime Service Plan³ – a clever Hyundai initiative that gives you transparency and peace of mind for the life of your car. No hidden fees and surprises.

And since every new Hyundai is built to the highest standards, we've got the confidence to offer comprehensive customer service without exception – or as we like to say, amazing as standard. And that includes 24/7 Roadside Support⁴ for ten years when you service with us.



iCare



1. 2015 Canstar Blue Innovation Excellence Awards (5 Stars). 2. **5 year/unlimited km warranty:** Applies to new passenger vehicles used for private/domestic purposes. Excludes vehicles used at any time for “commercial application” as defined in the vehicle warranty policy, for which a 5 year/130,000km (whichever occurs first) warranty applies. Refer to full warranty terms & conditions for details and exclusions. 3. **Lifetime Service Plan:** For the benefit of Hyundai owners, Hyundai provides online quotes which specify the maximum price applicable for a vehicle's next scheduled maintenance service at a participating authorised Hyundai Dealer and using genuine Hyundai parts (where required). Online quotes are available at hyundai.com.au, apply for a stated effective period only and may change after that effective period without notice. Standard scheduled maintenance services are of limited scope. The benefit of online quotes is available for all Hyundai's, for their lifetime. 4. **Roadside Support Plan:** Complimentary 12 months Roadside Support when you purchase a new Hyundai passenger vehicle (excluding rental buyers). Further Roadside Support extensions are available, each for 12 months from the date of a scheduled maintenance service at a participating authorised Hyundai Dealer (unless vehicle is more than 108 months (9 years) from the original new car sale date, in which case entitlement to Roadside Support ends when vehicle reaches 120 months (10 years) from original new car sale date).

Accent.



Big help, for little Aussies.

Every time a new car is sold at one of our Dealerships, both Hyundai and the Dealer will donate part of the sale price to Hyundai Help for Kids.™

Hyundai Help for Kids™ offers funding to child-focused organisations and charities working to improve the lives of children all over Australia – from supporting community initiatives, to providing much-needed medical equipment.

So when you buy a Hyundai, you're buying more than just a car. Together with Hyundai Help for Kids,™ you're empowering thousands of young Australians and giving them a better future.



Hyundai Help for Kids™ is a registered trademark of Hyundai Motor Company.

Accent.

Australia, in our DNA.

We're one of the biggest car manufacturers in the world – and one of the fastest growing global car brands.

We're also the only car company in the world producing its own steel, because we know the best steel makes for the strongest cars.

That's why we source the majority of our high quality iron ore from right here, in Australia's backyard. So now, when you buy a new Hyundai, you know you're driving a car that's directly connected to home.



Accent.

| Hyundai Accent | | |
|--|--|-----------|
| Engine | 1.6 GDi | |
| Engine family | Gamma | |
| Configuration | Transverse front mounted driving front wheels | |
| Cylinder capacity | 1.6 litres (1,591 cc) | |
| Number of cylinders | 4 in-line | |
| Valve system | 16 Valve, Double Overhead Cam (DOHC), Dual Continuously Variable Valve Timing (D-CVVT) | |
| Intake system | 2-step variable induction system | |
| Maximum power | 103 kW @ 6,300 RPM | |
| Maximum torque | 167 Nm @ 4,850 RPM | |
| Fuel system | GDi (Gasoline Direct Injection) | |
| Fuel type | 91 RON (ULP), E10 compatible | |
| Emissions standard | Euro 5 | |
| Bore x stroke | 77.0 mm x 85.44 mm | |
| Compression ratio | 11.0:1 | |
| Transmission | 1.6 GDi | |
| Manual | 6 speed manual | |
| Automatic | 6 speed automatic with sequential manual mode | |
| Gear ratio | Manual | DCT |
| 1st | 3.615 | 4.400 |
| 2nd | 1.955 | 2.726 |
| 3rd | 1.286 | 1.834 |
| 4th | 1.036 | 1.392 |
| 5th | 0.839 | 1.000 |
| 6th | 0.703 | 0.774 |
| Reverse | 3.700 | 3.440 |
| Final | 3.833 | 3.065 |
| Engine/transmission availability | 1.6 GDi | |
| Hatchback & sedan | Manual | Automatic |
| Sport | • | • |
| Steering | 1.6 GDi | |
| Type | Column mounted Motor Driven Power Steering (C-MDPS), rack & pinion | |
| Min. turning circle diameter between kerbs / walls | 10.4 m | |
| Number of steering wheel turns lock to lock | 2.9 | |
| Suspension | 1.6 GDi | |
| Front | MacPherson strut | |
| Rear | Torsion beam axle | |

Key:
• = Feature is available on trim - = Feature is not available on trim

| Hyundai Accent | | |
|------------------------|--|-----------|
| Brakes | 1.6 GDi | |
| System | Dual-diagonal, split circuit, power assisted with Electronic Brakeforce Distribution (EBD) and Brake Assist System (BAS) | |
| Front brake type | Ventilated disc | |
| Front disc dimensions | 256 mm x 22 mm | |
| Rear brake type | Solid disc | |
| Rear disc dimensions | 262mm x 10 mm | |
| Weight | 1.6 GDi | |
| Hatchback & sedan | Manual | Automatic |
| Kerb weight - lightest | 1070 kg | 1090 kg |
| Kerb weight - heaviest | 1150 kg | 1170 kg |
| Gross Vehicle Mass | 1610 kg | 1610 kg |
| Towing capacity | 1.6 GDi | |
| Hatchback only | Manual | Automatic |
| Braked | 900 kg | 900 kg |
| Unbraked | 450 kg | 450 kg |
| Maximum towball weight | 50 kg | 50 kg |
| Fuel consumption* | 1.6 GDi | |
| Hatchback only | Manual | Automatic |
| Combined (L/100km) | 6.3 | 6.6 |
| Urban (L/100km) | 8.2 | 9.2 |
| Extra Urban (L/100km) | 5.1 | 5.1 |
| CO2 - combined (g/km) | 146 | 154 |
| Fuel tank volume | 43 L | |

*Source: Australian Design Rule 81/02 static laboratory combined average city and highway cycle test.
Real-world fuel consumption will vary depending on a combination of driving habits, the condition of the vehicle, and other factors such as road, traffic and weather conditions. ADR 81/02 test results are meant for comparison purposes only.

| Dimensions | Hatchback | Sedan |
|---|-------------------|---------------|
| Exterior | | |
| Length | 4115 mm | 4370 mm |
| Width | 1700 mm | |
| Height | 1450 mm | |
| Wheelbase | 2570 mm | |
| Wheel track - front / rear | 1489 mm / 1493 mm | |
| Minimum ground clearance (based on kerb weight) | 140 mm | |
| Interior | | |
| Head room - front / rear | 1014 / 959 mm | 1014 / 946 mm |
| Leg room - front / rear | 1062 / 846 mm | |
| Shoulder room - front / rear | 1364 / 1356 mm | |
| Hip room - front / rear | 1304 / 1198 mm | |
| Cargo area - VDA | 370 L | 465 L |

| Hyundai Accent | |
|---|--------------------|
| Wheels & tyres | Sport |
| Wheel type | Alloy |
| Wheel dimensions | 16 x 6.0J +52 |
| Tyre dimensions | 195/50 R16 84H |
| Spare wheel type | Full size alloy |
| Driving convenience | Sport |
| Cruise control | • |
| One touch turn signal - 3 flashes | • |
| Rear wiper | • (Hatchback only) |
| Steering wheel mounted controls - audio & cruise control | • |
| Tilt adjustable steering column | • |
| Active safety | Sport |
| Electronic Stability Control (ESC) including: | |
| Anti-lock Braking System (ABS) | • |
| Brake Assist System (BAS) | • |
| Electronic Brakeforce Distribution (EBD) | • |
| Traction Control System (TCS) | • |
| Vehicle Stability Management (VSM) | • |
| Passive safety | Sport |
| Airbags | |
| Front airbags - driver & front passenger | • |
| Side (thorax) airbags - driver & front passenger | • |
| Side curtain airbags - 1st & 2nd rows | • |
| Doors | |
| Impact sensing auto door unlock | • |
| Rear door child safety locks | • |
| Seatbelts | |
| Pretensioners, load limiters & height adjustable upper mounts on front seat belts | • |
| Seat belt reminder - front & rear seatbelts | • |
| Seating | |
| Height adjustable front head restraints | • |
| Height adjustable rear head restraints | • |
| ISOFIX child restraint anchors (rear outboard seats) | • |
| Top tether child restraint anchors (rear) - 3 anchors | • |
| Security | Sport |
| Security system | |
| Active lock / unlock operation | • |
| Central locking | • |
| Engine immobiliser | • |
| Remotes | |
| Keyless entry remote - 2x | • |

Notes:
1. **Apple CarPlay™** functionality requires software update. Apple CarPlay™ requires iPhone 5* or subsequent model (lightning cable) in order to operate. Apple®, iPhone® and iPod® are registered trademarks of Apple Inc., registered in the U.S. and other countries. 2. **Bluetooth®** is a registered trademark of Bluetooth SIG, Inc. Please check your Bluetooth® device's capabilities to ensure compatibility.

| Hyundai Accent | |
|---|-------|
| Multimedia system | Sport |
| Functions | |
| Apple CarPlay™ compatibility ¹ | • |
| Bluetooth® phone connectivity ² | • |
| 5" touchscreen display | • |
| Speakers | |
| Audio system - 4 speakers | • |
| Audio / media sources | |
| AM / FM radio | • |
| AUX / USB audio input with iPod® compatibility | • |
| Bluetooth® audio streaming ² | • |
| Occupant comfort & convenience | Sport |
| Upholstery/trim | |
| Premium steering wheel & gear knob | • |
| Front seats | |
| Driver's seat - height adjustable | • |
| Front centre console storage cubby - power outlet - 1 x 12V outlet | • |
| Grip handles - 1x (passenger) | • |
| Rear seats | |
| Grip handles - 2x | • |
| Windows/shades | |
| Power windows - front & rear | • |
| One touch window up & down function with anti-pinching safety feature - driver's window | • |
| Vision & sight | Sport |
| Exterior mirrors | |
| Power adjustable | • |
| Instrument cluster/driving displays | |
| Instrument cluster - with trip computer | • |
| Ventilation & heating | Sport |
| Air conditioning | |
| Manual controls | • |
| Cabin air filter | • |
| Other features | |
| Heated rear windshield | • |
| Exterior styling | Sport |
| Front | |
| Front grille inserts - chrome | • |
| Interior styling | Sport |
| Materials | |
| Cloth door trim inserts | • |

Accent.


| Hyundai Accent | |
|--|--------------------|
| Lighting | Sport |
| Exterior lighting - rear | |
| High Mount Stop Light (HMSL) | • |
| Exterior lighting - others | |
| Side repeaters - LED integrated into side mirrors | • |
| Interior lighting - front | |
| Front room lights and map lights | • |
| Interior lighting - rear | |
| Centre room light | • |
| Interior lighting - others | |
| Cargo area light | • |
| Interior light fade-out delay | • |
| Storage solutions | Sport |
| Front seats | |
| Cup holders - centre console | • |
| Front passenger seat back pocket | • |
| Glovebox compartment | • |
| Retractable sunglasses compartment | • |
| Ticket holder - sunvisor (driver) | • |
| Rear seats | |
| Coat hooks - 1x | • |
| Rear seating split folding - 60:40 | • |
| Boot/Luggage area | |
| Bag hooks - 1x | • (Hatchback only) |
| Others | |
| Doors - map pockets and bottle bulges (front and rear) | • |

Key:
• = Feature is available on trim - = Feature is not available on trim



Accent.

 Like us at facebook.com/hyundaiaustralia

 Follow us at twitter.com/hyundaiaus

Hyundai Motor Company Australia

394 Lane Cove Road, Macquarie Park, NSW Australia 2113

www.hyundai.com.au

Hyundai Motor Company (HMC) and the Hyundai Motor Company Australia (HMCA) each reserve the right to alter vehicle specifications and equipment levels without notice. Some equipment featured on the cars in this brochure may not be available in Australia or may be optional. To the extent permitted by law, neither HMC nor HMCA shall be liable to any person as a result of reliance on the content of this brochure. Please consult your Hyundai Dealer for the latest specifications, equipment levels, options, prices, colours and vehicle availability. Metallic and mica paint are optional extras. Note: information in this brochure is current as at 15/08/17. Part No. AD0817B