

Kona.





Live a vibrant life.

We have one goal – to be Australia's most loved car company. To get there, we're driven by the simple philosophy that life's most incredible moments shouldn't be reserved for a select few, and everyone should be able to experience an exciting and enjoyable drive.

So, how do we make that happen? We start by pushing our own boundaries, by making premium the new standard, and by engineering the most enjoyable ride possible.

Kona signals the arrival of a new generation of Hyundai SUV's. A generation that refuses to be bound to a singular way of thinking. Because let's face it, one size doesn't always fit all, and that's what makes the Kona so different.

It's all about freedom of choice, and the Kona gives you the freedom to choose how you present yourself (and your individuality) to the world. By putting the power in your hands, the Kona becomes an extension of you.

It's sleek, easy on the eye, well connected, and with over 150 combinations¹, you'll be able to style it your way in order to live a more vibrant life.



1. Combinations vary depending on exterior colour, interior trim, variant and engine.

Kona.

Actively safe.

There are two things we take very seriously – fun, and safety.

The Kona is fun to drive, but it's comforting to know that no matter where life takes you, you're protected by some of the most comprehensive, modern safety features in existence today. From a rigid body made of high strength steel for all round protection, to 6 airbags and a rear view camera with rear parking sensors – everything we do is to help keep you out of harm's way.

Hyundai SmartSense™¹ is working to protect you too. Every feature in this suite of intelligent safety technologies has one thing in common – they've been developed to help you be alert to (and avoid) any dangers around you.

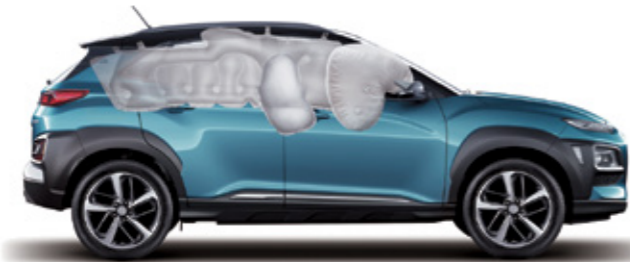
From alerting you to approaching objects and potential collisions, to helping you stay aware of what's happening in your blind spots, Hyundai SmartSense™¹ provides peace of mind for you, and for us.



Hyundai SmartSense™



Rear view camera

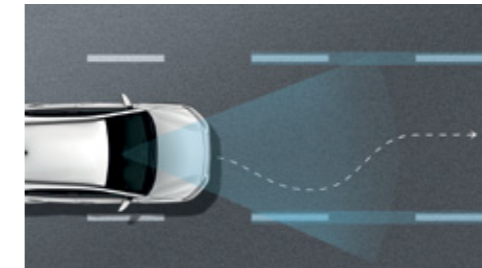


6 airbags



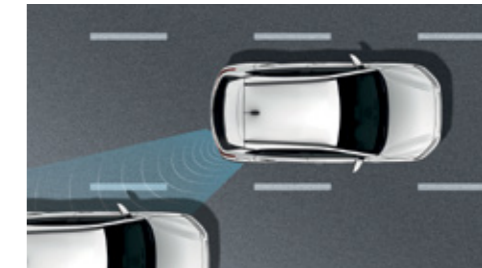
Driver Attention Warning (DAW)

A driver protection feature which helps monitor driving patterns in order to detect reckless or fatigued driving and prevent potential accidents. If the system detects inattentive driving patterns, an audible sound and message on the display panel will bring this to the driver's attention.



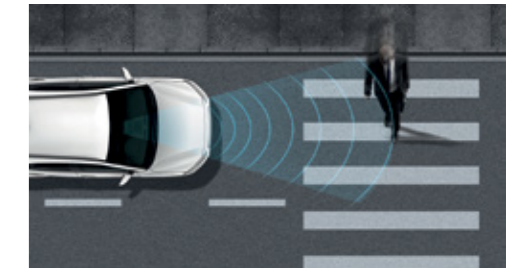
Lane Keeping Assist (LKA)

LKA provides steering intervention to assist the vehicle to stay in the centre of the lane. When the vehicle strays from the intended lane without indicators being activated, an audible and visual warning will be sounded.



Blind-Spot Collision Warning (BCW)

When driving at a speed of 30km/h or higher, the BCW function will alert the driver to vehicles that enter the blind spot, including during lane changes.



Forward Collision-Avoidance Assist (FCA)

Combining radar and camera data, the FCA system autonomously activates the brakes when it detects dangerous and sudden braking by the car ahead, or movement of pedestrians on the road.

¹ Hyundai SmartSense™ is a registered trademark of Hyundai Motor Company. Safety features are not a substitute for attentive driving. Only available on the Active with safety, Elite & Highlander variants. High Beam Assist is only available on the Highlander variant.

Impressive performance.

The Kona's performance is just as exciting as its personality.

Built on a high safety, lightweight body, and with three drive modes (Comfort, Eco and Sport) to choose from, the Kona is a joy to drive.

Once again, it's entirely up to you. Choose from either the 2.0L MPI 2WD with 6-speed automatic, or the 1.6L Turbo GDi AWD with 7-speed dual clutch automatic – which along with sharp throttle control and impressive torque, also allows you to get off road to explore even further.

Powerful, efficient, responsive and downright fun, the Kona really does encourage you to live a more vibrant life.



2.0 MPI petrol engine



1.6 Turbo-GDi petrol engine



2.0 MPI 2WD

110 Maximum Power
kW/6,200 rpm

180 Maximum Torque
Nm/4,500 rpm

1.6 T-GDi AWD

130 Maximum Power
kW/5,500 rpm

265 Maximum Torque
Nm/1,500 – 4,500 rpm



Designed to be different.

The Kona is designed with independence and fun in mind.

Confident, vibrant, sporty and full of personality, its cascading front grille, slim LED daytime running lights, high contrast wrap around body cladding and wide stance is designed to make a statement wherever you go.

The Kona also features unique front and rear light architecture, with separated top and bottom lights stacked for extra impact.

The Kona doesn't simply allow you to express your personality, it encourages it – and with over 150 combinations¹, that expression can be as unique as you are.



Top: Cascading front grille with mesh pattern³
Bottom: Top-bottom split front headlights

Top: LED rear combination lights²
Bottom: Alloy wheels³

1. Combinations vary depending on exterior colour, interior trim, variant and engine.

2. LED rear combination lights: Only available on the Highlander variant.

3. Highlander variant shown.



Step inside.

They say it's what's on the inside that counts, and the Kona's interior counts for a lot – especially when it comes to space. It's a compact SUV, but sit inside and the Kona soon reveals its spacious self.

The Kona has far more room than you'd expect – from the generous cargo bay, to the 60/40 folding rear seats, you'll always have space when you need it.

It's well appointed too, with a premium interior that you can style to suit. We've added a heated steering wheel¹, heated and air ventilated front seats², leather appointed³ upholstery and a range of stylish additions.

Three accent trims⁴ (black leather³, acid yellow leather³ trim and red leather³ trim) provide a vibrant edge and unique detailing to the interior styling. Put them all together and you'll create an interior that's second to none.



Top: Heated and air ventilated front seats²
Bottom: Premium gear knob⁵

Top: Spacious interior⁵
Bottom: Leather appointed³ interior trim

1. **Heated steering wheel:** Only available on the Highlander variant.
 2. **Heated and air ventilated front seats:** Only available on the Highlander variant.
 3. **Leather appointed** may contain elements of genuine leather, polyurethane leather (leather substitute) or man-made materials, or a combination thereof. Not available on the Active variants.
 4. **Three accent trims:** Acid yellow leather trim and red leather trim not available on the Active variants.
 5. Highlander variant shown.

Connect to the road, and your world.

With a host of advanced features, the Kona is designed for you to enjoy your love for technology whilst driving on the road.

A Head-Up Display¹ on the dashboard projects a virtual image of important data (like your speed) right in front of your eyes, so you never have to take them off the road.

We've integrated Apple CarPlay™² and Android™ Auto³ too, so you can use the 7" touchscreen display to safely play music, make calls or get directions to your next destination via the Maps App on your smartphone device.

You'll also find a wireless smartphone charging pad⁴ in the centre console, so you'll always be able to easily recharge without the need for cables.



Wireless charging pad⁴



Push button start⁶



4.2" TFT colour supervision cluster⁵



7" touchscreen display with Apple CarPlay™² and Android™ Auto³ compatibility



1. **Head-Up Display:** Only available on the Highlander variant. 2. **Apple CarPlay™** functionality requires software update. Apple CarPlay™ requires iPhone® 5 or subsequent model (lightning cable) in order to operate. Apple® and iPhone® are registered trademarks of Apple Inc. 3. **Android™ Auto:** Requires a device with Android 5.0 operating system or subsequent version, and USB cable in order to operate. Android is a trademark of Google Inc. 4. **Wireless charging pad:** Requires a Qi-enabled smartphone or adaptor to operate. Only available on the Highlander variant. 5. **4.2" TFT colour supervision cluster:** Only available on the Highlander variant. 6. **Push button start:** Only available on the Elite and Highlander variants.



Overseas model shown.

Kona.

Variants.

Life is about choice – so we've created four different Kona variants that will let you take to the road the way you want to.



1. **Apple CarPlay™** functionality requires software update. Apple CarPlay™ requires iPhone® 5 or subsequent model (lightning cable) in order to operate. Apple® and iPhone® are registered trademarks of Apple Inc. 2. **Android™ Auto:** Requires a device with Android 5.0 operating system or subsequent version, and USB cable in order to operate. Android is a trademark of Google Inc. 3. **Bluetooth®** is a registered trademark of Bluetooth SIG, Inc. Please check your Bluetooth® device's capabilities to ensure compatibility. 4. **iPod®** is a registered trademark of Apple computer Inc., registered in the U.S. and other countries. 5. **Hyundai SmartSense™** is a registered trademark of Hyundai Motor Company. Safety features are not a substitute for attentive driving. High Beam Assist is only available on the Highlander variant. 6. **Leather appointed** may contain elements of genuine leather, polyurethane leather (leather substitute) or man-made materials, or a combination thereof. 7. **Wireless charging pad:** Requires a Qi-enabled smartphone or adaptor to operate.

Active.



Engine and transmission

2.0L MPi (Petrol) 2WD – Automatic
1.6L T-GDi (Petrol) AWD – DCT

Key specifications:

Safety

- 6 airbags
- Parking Distance Warning – Reverse (PDW-R)
- Rear view camera
- Emergency Stop Signal (ESS)
- Electronic Stability Control (ESC) including:
 - Anti-lock Braking System (ABS)
 - Brake Assist System (BAS)
 - Downhill Brake Control (DBC)
 - Electronic Brakeforce Distribution (EBD)
 - Hill-start Assist Control (HAC)
 - Traction Control System (TCS)
 - Vehicle Stability Management (VSM)
- Tyre Pressure Monitoring System (TPMS)

Interior and technology

- Leather appointed⁶ steering wheel and gear knob
- 6 speakers audio system

- 7" touchscreen display with Apple CarPlay™¹ and Android™ Auto² compatibility
- Bluetooth® connectivity³
- Steering wheel controls for audio, phone and cruise control
- AUX/USB input with digital iPod®⁴ compatibility
- Power windows – front & rear
- Cruise control

Exterior and technology

- 16" alloy wheels
- Front grille – black
- Rear spoiler
- LED Daytime Running Lights (DRL)
- Automatic dusk sensing wipers headlights with escort and welcome functions
- Black exterior cladding
- LED side repeaters integrated into side mirrors



16" alloy wheels



Top-bottom split front headlights



Rear view camera



7" touchscreen with Apple CarPlay™¹ and Android™ Auto²

Active with safety pack.



Engine and transmission

2.0L MPi (Petrol) 2WD – Automatic
1.6L T-GDi (Petrol) AWD – DCT

Key specifications above Active:

Safety

- Hyundai SmartSense™⁵ including:
 - Blind-Spot Collision Warning (BCW)
 - Driver Attention Warning (DAW)
 - Forward Collision-Avoidance Assist (FCA)
 - Forward Collision Warning (FCW)
 - Lane Keeping Assist (LKA)
 - Rear Cross-Traffic Collision Warning (RCCW)

Exterior and technology

- Heated side mirrors
- Power folding side mirrors with auto fold function



Driver Attention Warning (DAW)



Blind-Spot Collision Warning (BCW)



Rear Cross-Traffic Collision Warning (RCCW)



Heated side mirrors

Elite.



Engine and transmission

2.0L MPi (Petrol) 2WD – Automatic
1.6L T-GDi (Petrol) AWD – DCT

Key specifications above Active with safety pack:

Safety

- Front fog lights

Interior and technology

- Leather appointed⁶ seats
- Smart Key with push button start
- Climate control – single zone with auto defog function
- One touch window up & down function with anti-pinch safety feature – driver's window
- Luggage net
- Solar control glass with rear privacy glass
- Driver & front passenger seat back pockets

Exterior and technology

- 17" alloy wheels
- Rain sensing wipers
- Front grille – carbon grey
- Carbon grey exterior cladding
- Side garnish insert – silver
- Rear skid plate – silver
- Front grille surround – chrome



17" alloy wheels



Leather appointed⁶ seats



Rear privacy glass



Push button start

Highlander.



Engine and transmission

2.0L MPi (Petrol) 2WD – Automatic
1.6L T-GDi (Petrol) AWD – DCT

Key specifications above Elite:

Safety

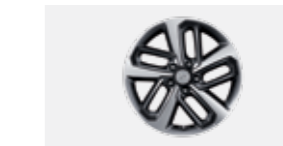
- High Beam Assist (HBA)
- Parking Distance Warning – Front (PDW-F)

Interior and technology

- Head-Up Display (HUD)
- Wireless charging pad⁷
- Electro-chromatic Mirror (ECM) – auto-dimming
- Heated steering wheel
- Heated & air ventilated front seats
- Power adjustable driver's seat – 10-way (including 2-way lumbar support)
- Power adjustable passenger's seat – 8-way
- 4.2" TFT colour LCD supervision cluster with trip computer & digital speedometer

Exterior and technology

- 18" alloy wheels
- LED front headlights
- LED rear combination lights



18" alloy wheels



Head-Up Display (HUD)



Wireless charging pad⁷



Parking Distance Warning – Front (PDW-F)

A colourful choice.

Style your Kona with three stylish trims¹, two-tone roof options² and a vibrant range of colours – including Acid Yellow, Ceramic Blue, Dark Knight and Tangerine Comet.

With Kona, you'll find a colour combination to suit your personality and complement your lifestyle.

Kona interiors



Active
Black cloth

Elite & Highlander
Black leather

Elite & Highlander
Acid Yellow leather

Elite & Highlander
Red leather

Kona exterior colours



Chalk White – P6W



Acid Yellow – W9Y



Dark Knight – YG7



Phantom Black – MZH



Lake Silver – SS7



Ceramic Blue – SU8



Blue Lagoon – Z3U



Tangerine Comet – TA9



Pulse Red – Y2R

1. Three stylish trims: Acid yellow leather trim and red leather trim not available on the Active variants.

2. Two-tone roof options: Not available on the Active variants.

Kona colour availability by trim*

Trim			Elite / Highlander			
Exterior / Interior			Black cloth (TRY)	Black leather (TRY)	Acid Yellow leather (TRY)	Red leather (TRY)
Chalk White (Metallic) Standard Paint	P6W	Body coloured roof	•	•	•	•
	P62	Dark Knight roof	-	•	•	•
	P61	Phantom Black roof	-	•	•	•
Lake Silver (Mica/Metallic) Premium Paint	SS7	Body coloured roof	•	•	-	-
Dark Knight (Mica) Premium Paint	YG7	Body coloured roof	•	•	•	•
Phantom Black (Mica) Premium Paint	MZH	Body coloured roof	•	•	•	•
Tangerine Comet (Mica) Premium Paint	TA9	Body coloured roof	•	•	-	-
	TT2	Dark Knight roof	-	•	-	-
	TT1	Phantom Black roof	-	•	-	-
Pulse Red (Mica/Metallic) Premium Paint	Y2R	Body coloured roof	-	-	-	•
	Y22	Dark Knight roof	-	-	-	•
	Y21	Phantom Black roof	-	-	-	•
Acid Yellow (Mica/Metallic) Premium Paint	W9Y	Body coloured roof	-	-	•	-
	W92	Dark Knight roof	-	-	•	-
	W91	Phantom Black roof	-	-	•	-
Blue Lagoon (Mica/Metallic) Premium Paint	Z3U	Body coloured roof	•	•	-	-
	Z32	Dark Knight roof	-	•	-	-
	Z31	Phantom Black roof	-	•	-	-
Ceramic Blue (Mica) Premium Paint	SU8	Body coloured roof	•	•	-	-
	SUZ	Dark Knight roof	-	•	-	-
	SU1	Phantom Black roof	-	•	-	-

*Colours shown are indicative only and may vary due to the printing process. Premium paints are an additional cost.

Hyundai Genuine Accessories.

The Kona is an extension of your personality, and Hyundai Genuine Accessories¹ can help make it even more unique.

From roof racks to cargo liners, there's a suite of practical, and stylish Hyundai Genuine Accessories¹ to match.



Top: Tinted stylevisors (set of 4)
Bottom: Cargo organiser⁵

Top: Carpet cargo liner
Bottom: Tailored carpet floor mats (set of 4) – yellow stitching

Top: Laser shades (rear, set of 2)
Bottom: Dash mat

1. All Hyundai Genuine Accessories are subject to warranty conditions. See your nearest Hyundai Dealer or visit www.hyundai.com.au for full warranty terms and usage recommendations.
2. Auxiliary cable not suitable for Apple® devices. 3. iPad® is a registered trademark of Apple Inc. The iPad® holder has been designed to hold iPad® models 1, 2, 3, 4 or Air securely. To ensure occupants are protected in the event of a collision, the screen protector must be fitted to the iPad® when in use. iPad® not included. 4. Only suitable for use with a retractable seatbelt. 5. Items shown in cargo organiser not included. 6. Maximum ball download 130kg. 2WD Towing capacity 1,300kg braked & 600kg unbraked. AWD Towing capacity 1,250kg braked & 600kg unbraked. Towbar capacity subject to regulatory requirements, towbar design, vehicle design and towing equipment limitations. 7. Load capacity = 80kg evenly distributed over 2 bars. Roof racks should be removed when not in use. 8. Requires fitment of roof racks at additional cost.



Genuine Accessories	Active	Elite	Highlander
Technology			
Auxiliary cable ²	•	•	•
iPad® holder ³	•	•	•
Interior			
Tailored carpet floor mats (set of 4) – black stitching	•	•	•
Tailored carpet floor mats (set of 4) – red stitching	•	•	•
Tailored carpet floor mats (set of 4) – yellow stitching	•	•	•
All weather floor mats	•	•	•
Dash mat	•	•	•
Carpet cargo liner	•	•	•
Rubber cargo liner	•	•	•
Cargo barrier	•	•	•
Cargo barrier front position strap	•	•	•
Laser shades (rear, set of 2)	•	•	•
Fabric rear bumper protector	•	•	•
Portable cooler ⁴ (12 volt, 15 litre)	•	•	•
Cargo organiser ⁵	•	•	•
Water resistant neoprene – seat cover (set of 2, front)	•	•	•
Exterior			
Tinted stylevisors (set of 4)	•	•	•
Towbar, towball & trailer wiring harness ⁶	•	•	•
Roof Racks and Lifestyle			
Whispbar™ quiet roof racks ⁷ – flush	•	•	•
Whispbar™ quiet roof racks ⁷ – through bars	•	•	•
Roof mounted bike carrier (wheel off) ⁸	•	•	•
Thule bike rack (wheel on) ⁸	•	•	•
Roof mounted kayak holder ⁸	•	•	•
Ski and snowboard carrier ⁸	•	•	•
Surfboard carrier ⁸	•	•	•
Safety			
First aid kit (4 Pocket)	•	•	•

Hyundai Auto Link.

Hyundai Auto Link is a smart phone app that lets you stay connected with your Kona.

It works by using a pre-installed module to connect your car's computer to your mobile phone via Bluetooth®, keeping track of your driving habits, monitoring your car's health and providing analytical information so you can get the most out of your car.

The app is a free download for your iOS and Android device!

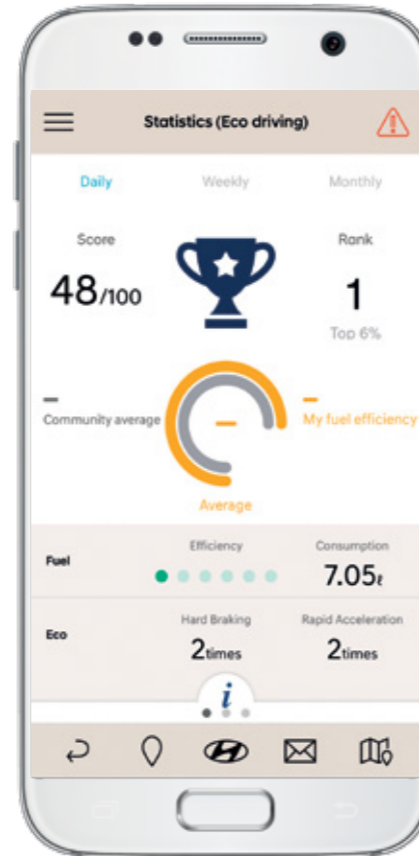
Become a more economical driver.

- Tracks rapid acceleration, hard braking and fuel efficiency.
- Feeds back driving history and efficiency statistics on each trip.
- Compares your driving to other owners.

Help us care for your car.

- Provides vehicle health report and alerts you to any signs of faults.
- Linked to your myHyundai account.
- Remote monitoring of your Kona's health.
- Service information and online service bookings at your fingertips.
- Easy access to Hyundai Customer Care.

For more information head to www.hyundai.com.au/auto-link



Bluetooth® is a registered trademark of Bluetooth SIG, Inc. 1. Device compatibility list can be found at www.hyundai.com.au/auto-link. Use and availability of the Hyundai Auto Link app may be subject to additional terms and conditions and fees as prescribed by your telecommunications service provider.



Overseas model shown.

Kona.

Relax, we'll take it from here.

There's a reason why our iCare program is so highly regarded. We built Hyundai iCare around one simple, innovative idea. That comprehensive on-the-road care should come standard with every car – not just as an “optional extra”.

Our five-year, unlimited kilometre warranty¹ means you've got the freedom to go ahead and drive without having to keep an eye on the odometer.

Imagine knowing the maximum price of your next scheduled service, before pulling into the service centre. That's the advantage of our Lifetime Service Plan² – a clever Hyundai initiative that gives you transparency and peace of mind for the life of your car. No hidden fees and surprises.

Since every new Hyundai is built to the highest standards, we've got the confidence to offer comprehensive customer service without exception. Or as we like to say, amazing as standard. That includes a Sat Nav Update Plan for up to 5 years,³ and 24/7 Roadside Support⁴ for up to ten years when you service with us.



iCare



1. 5 year/unlimited Km warranty: Applies to new passenger vehicles used for private/domestic purposes. Excludes vehicles used at any time for “commercial application” as defined in the vehicle warranty policy, for which a 5 year/130,000km (whichever occurs first) warranty applies. Refer to full warranty terms & conditions, for details and exclusions. **2. Lifetime Service Plan:** For the benefit of Hyundai owners, Hyundai provides online quotes, which specify the maximum price applicable for a vehicle's next scheduled maintenance service at a participating authorised Hyundai dealer and using genuine Hyundai parts (where required). Online quotes are available at www.hyundai.com.au, apply for a stated effective period only and may change after that effective period without notice. Standard scheduled maintenance services are of limited scope. The benefit of online quotes is available for all Hyundai's, for their lifetime. **3. Sat Nav Update Plan:** Only applies to new vehicles with factory fitted satellite navigation. Updates are delivered annually and are complimentary if the vehicle completes a scheduled service at a participating Hyundai dealer. Updates must be undertaken within 5 years of the vehicle's initial purchase, maximum number of 4 updates. **4. Roadside Support Plan:** Complimentary 12 months Roadside Support when you purchase a new Hyundai passenger vehicle (excluding rental buyers). Further Roadside Support extensions are available, each for 12 months from the date of a scheduled maintenance service at a participating authorised Hyundai dealer (unless vehicle is more than 108 months (9 years) from the original new car sale date, in which case entitlement to Roadside Support ends when vehicle reaches 120 months (10 years) from original new car sale date).

Kona.



Big help, for little Aussies.

Every time a new car is sold at one of our Dealerships, both Hyundai and the Dealer will donate part of the sale price to Hyundai Help for Kids™*

Hyundai Help for Kids™* offers funding to child-focused organisations and charities working to improve the lives of children all over Australia – from supporting community initiatives, to providing much-needed medical equipment.

So when you buy a Hyundai, you're buying more than just a car. Together with Hyundai Help for Kids™* you're empowering thousands of young Australians and giving them a better future.



*Hyundai Help for Kids™ is a registered trademark of Hyundai Motor Company.

Kona.

Australia, in our DNA.

We're one of the biggest car manufacturers in the world – and one of the fastest growing global car brands.

We're also the only car company in the world producing its own steel, because we know the best steel makes for the strongest cars.

That's why we source the majority of our high quality iron ore from right here, in Australia's backyard. So now, when you buy a new Hyundai, you know you're driving a car that's directly connected to home.



Kona.

Hyundai Kona		
Engine	2.0 Atkinson MPI 2WD	1.6 T-GDi AWD
Engine family	Nu	Gamma
Configuration	Transverse front mounted driving front wheels	Transverse front mounted driving front and rear wheels
Cylinder capacity	2.0 litres (1,999 cc)	1.6 litres (1,591 cc)
Number of cylinders	4 in-line	4 in-line
Valve system	16 Valve (HLA), Atkinson cycle	16 Valve (MLA)
Intake system	2-step variable induction system	Turbocharger
Maximum power	110 kW @ 6,200 RPM	130 kW @ 5,500 RPM
Maximum torque	180 Nm @ 4,500 RPM	265 Nm @ 1,500 - 4,500 RPM
Fuel system	MPI (Multi Point Injection)	T-GDi (Turbo Gasoline Direct Injection)
Fuel type	91 RON (ULP), E10 compatible	91 RON (ULP), E10 compatible
Emissions standard	Euro 5	Euro 5
Bore x stroke	81.0 mm x 97.0 mm	77.0 mm x 85.44 mm
Compression ratio	12.5:1	10:1
Transmission	2.0 Atkinson MPI 2WD	1.6 T-GDi AWD
All Wheel Drive (AWD) System	-	Active on-demand 4WD with 50/50 front & rear lock mode
Automatic	6 speed automatic	-
Dual Clutch Transmission (DCT)	-	7 speed DCT (dry clutch) with sequential manual mode
Gear ratio	Automatic	DCT
1st	4.400	3.643
2nd	2.726	2.174
3rd	1.834	1.826
4th	1.392	1.024
5th	1.000	0.809
6th	0.774	0.854
7th	-	0.717
Reverse	3.440	4.696
Final	3.510	4.643 (1st, 2nd, 4th, 5th) 3.611 (3rd, 6th, 7th & Reverse)

Engine / transmission availability	2.0 Atkinson MPI 2WD	1.6 T-GDi AWD
	Automatic	DCT
Active	•	•
Active with Safety Pack	•	•
Elite	•	•
Highlander	•	•
Steering	Column mounted Motor Driven Power Steering (C-MDPS), rack & pinion	
Type	Column mounted Motor Driven Power Steering (C-MDPS), rack & pinion	
Minimum turning circle diameter between kerbs / walls	10.6 m	
Number of steering wheel turns lock to lock	2.5	
Suspension	2.0 Atkinson MPI 2WD	1.6 T-GDi AWD
Front	MacPherson strut	
Rear	Torsion beam axle	Multi-link

Key:
• = Feature is available on trim ◦ = Feature is available on trim only as part of an option pack – = Feature is not available on trim

Hyundai Kona				
Brakes	2.0 Atkinson MPI 2WD		1.6 T-GDi AWD	
	Automatic		DCT	
	Dual-diagonal, split circuit, power assisted with Electronic Brakeforce Distribution (EBD) and Brake Assist System (BAS)			
System	Dual-diagonal, split circuit, power assisted with Electronic Brakeforce Distribution (EBD) and Brake Assist System (BAS)			
Front brake type	Ventilated disc			
Front disc dimensions	280 mm x 23 mm		305 mm x 25 mm	
Rear brake type	Solid disc			
Rear disc dimensions	262 mm x 10 mm		284 mm x 10 mm	
Weight	2.0 Atkinson MPI 2WD		1.6 T-GDi AWD	
	Automatic		DCT	
Kerb weight - lightest	1,290 kg		1,414 kg	
Kerb weight - heaviest	1,383 kg		1,507 kg	
Gross Vehicle Mass (GVM)	1,830 kg		1,940 kg	
Permissible Axle Weight (PAW) - front	1,030 kg		1,030 kg	
Permissible Axle Weight (PAW) - rear	1,055 kg		1,055 kg	
Roof rack load limit	80 kg		80 kg	
Towing capacity	2.0 Atkinson MPI 2WD		1.6 T-GDi AWD	
	Automatic		DCT	
Braked	1,300 kg		1,250 kg	
Unbraked	600 kg		600 kg	
Maximum towball weight	130 kg		130 kg	
Fuel consumption*	2.0 Atkinson MPI 2WD		1.6 T-GDi AWD	
	Automatic		DCT	
Combined (L/100km)	7.2		6.7	
Urban (L/100km)	9.7		8.0	
Extra Urban (L/100km)	5.8		6.0	
CO ² - combined (g/km)	169		153	
Fuel tank volume	50 L			

*Source: Australian Design Rule 81/02 static laboratory combined average city and highway cycle test. Real world fuel consumption will vary depending on a combination of driving habits, the condition of the vehicle, and other factors such as road, traffic and weather conditions. ADR 81/02 test results are meant for comparison purposes only.

Dimensions	Active	Active with Safety Pack	Elite	Highlander
Exterior				
Length	4,165 mm			
Width	1,800 mm			
Height (with roof rails)	1,550 mm (1,565 mm)			
Wheelbase	2,600 mm			
Wheel track - front / rear	1,575 mm / 1,584 mm	1,575 mm / 1,584 mm	1,563 mm / 1,572 mm	1,559 mm / 1,568 mm
Minimum ground clearance (based on kerb weight)	170 mm			
Approach / departure / ramp break over angle	17° / 29° / 16°			
Interior				
Head room front / rear	1,005 / 961 mm			
Leg room front / rear	1,054 / 880 mm			
Shoulder room front / rear	1,410 / 1,385 mm			
Hip room front / rear	1,355 / 1,326 mm			
Cargo area - VDA (minimum / maximum)	361 L / 1,143 L			
Wheels & tyres	Active	Active with Safety Pack	Elite	Highlander
Wheel type	Alloy	Alloy	Alloy	Alloy
Wheel dimensions	16 x 6.5J +44	16 x 6.5J +44	17 x 7.0J +50	18 x 7.5J +52
Tyre dimensions	205/60 R16	205/60 R16	215/55 R17	235/45 R18
Spare wheel type	Temporary space saver	Temporary space saver	Temporary space saver	Temporary space saver

Hyundai Kona				
Driving convenience	Active	Active with Safety Pack	Elite	Highlander
Cruise control	•	•	•	•
Hyundai Auto Link	•	•	•	•
One touch turn signal - 3, 5, or 7 flashes	•	•	•	•
Rain sensing wipers	-	-	-	-
Rear wiper – 2-stage, with auto wipe on reverse	•	•	•	•
Smart Key with push button start	-	-	•	•
Steering wheel mounted controls – audio, phone, cruise control & trip computer	•	•	•	•
Tilt & telescopic steering column	•	•	•	•

Driving engagement	Active	Active with Safety Pack	Elite	Highlander
Drive Mode - 3 settings (Comfort, Eco, Sport)	•	•	•	•

Active safety	Active	Active with Safety Pack	Elite	Highlander
Electronic Stability Control (ESC) including;				
Anti-lock Braking System (ABS)	•	•	•	•
Brake Assist System (BAS)	•	•	•	•
Electronic Brakeforce Distribution (EBD)	•	•	•	•
Downhill Brake Control (DBC)	•	•	•	•
Hill-start Assist Control (HAC)	•	•	•	•
Traction Control System (TCS)	•	•	•	•
Vehicle Stability Management (VSM)	•	•	•	•

Hyundai SmartSense™ including;	Active	Active with Safety Pack	Elite	Highlander
Blind-Spot Collision Warning (BCW)	-	•	•	•
Driver Attention Warning (DAW)	-	•	•	•
Forward Collision-Avoidance Assist (FCA)	-	•	•	•
Forward Collision Warning (FCW)	-	•	•	•
High Beam Assist (HBA)	-	-	-	•
Lane Keeping Assist (LKA)	-	•	•	•
Rear Cross-Traffic Collision Warning (RCCW)	-	•	•	•

Other features	Active	Active with Safety Pack	Elite	Highlander
Emergency Stop Signal (ESS)	•	•	•	•
Parking Distance Warning-Front (PDW-F) - 4 sensors, with guidance display	-	-	-	•
Parking Distance Warning-Reverse (PDW-R) - 4 sensors, with guidance display	•	•	•	•
Rear view camera with dynamic guide lines	•	•	•	•
Tyre Pressure Monitoring System (TPMS) - individual tyre pressure readout	•	•	•	•

Passive safety	Active	Active with Safety Pack	Elite	Highlander
Airbags				
Front airbags - driver & front passenger	•	•	•	•
Side (thorax) airbags - driver & front passenger	•	•	•	•
Side curtain airbags - 1st & 2nd rows	•	•	•	•
Roll-over Sensor	•	•	•	•

Doors	Active	Active with Safety Pack	Elite	Highlander
Impact sensing auto door unlock	•	•	•	•
Rear door child safety locks	•	•	•	•

Seatbelts	Active	Active with Safety Pack	Elite	Highlander
Pretensioners, load limiters & height adjustable upper mounts on front seat belts	•	•	•	•
Seat belt reminder - front & rear seatbelts	•	•	•	•

Key:
• = Feature is available on trim ◦ = Feature is available on trim only as part of an option pack – = Feature is not available on trim

Hyundai Kona				
Passive safety	Active	Active with Safety Pack	Elite	Highlander
Seating				
Height adjustable front head restraints with tilt function	•	•	•	•
Height adjustable rear head restraints	•	•	•	•
ISOFIX child restraint anchors (rear outboard seats)	•	•	•	•
Top tether child restraint anchors (rear) - 3 anchors	•	•	•	•

Security	Active	Active with Safety Pack	Elite	Highlander
Security system				
Active lock/unlock operation (user configurable)	•	•	•	•
Anti-theft alarm	•	•	•	•
Central locking	•	•	•	•
Engine immobiliser	•	•	•	•

Remotes	Active	Active with Safety Pack	Elite	Highlander
Keyless entry remote - 2x	•	•	-	-
Smart Key remote - 2x	-	-	•	•

Multimedia system	Active	Active with Safety Pack	Elite	Highlander
Functions				
Apple CarPlay™ ¹ & Android™ Auto ² compatibility	•	•	•	•
Bluetooth® ³ phone connectivity	•	•	•	•
Touchscreen - 7" display	•	•	•	•

Speakers	Active	Active with Safety Pack	Elite	Highlander
Audio system - 6 speakers	•	•	•	•
Audio/media sources				
AM/FM radio	•	•	•	•
AUX / USB audio input with iPod® ⁵ compatibility	•	•	•	•
Bluetooth® ³ audio streaming	•	•	•	•

Occupant comfort & convenience	Active	Active with Safety Pack	Elite	Highlander
Upholstery/trim				
Leather appointed ⁶ interior - steering wheel & gear knob	•	•	-	-
Leather appointed ⁶ interior - seats, steering wheel & gear knob	-	-	•	•

Front seats	Active	Active with Safety Pack	Elite	Highlander
Driver's seat - height adjustable	•	•	•	•
Driver's seat - power adjustable - 10-way (including 2-way lumbar support)	-	-	-	•
Passenger's seat - power adjustable - 8-way	-	-	-	•
Front centre console storage cubby - power outlets - 2 x 12V outlets	•	•	•	•
Front centre console - wireless charging pad (Qi standard) ⁷	-	-	-	•

Rear seats	Active	Active with Safety Pack	Elite	Highlander
Grip handles - 1x (passenger)	•	•	•	•
Centre fold down armrest	•	•	•	•
Grip handles - 2x	•	•	•	•

Notes:
1. **Hyundai SmartSense™** is a registered trademark of Hyundai Motor Company. Safety features are not a substitute for attentive driving.
2. **Apple CarPlay™** functionality requires software update. Apple CarPlay™ requires iPhone® 5 or subsequent model (lightning cable) in order to operate.
3. **Android™ Auto** requires a device with Android 5.0 operating system or subsequent version, and USB cable in order to operate. Android is a trademark of Google Inc.
4. **Bluetooth®** is a registered trademark of Bluetooth SIG, Inc. Please check your Bluetooth® device's capabilities to ensure compatibility.
5. **iPod®** is a registered trademark of Apple computer Inc., registered in the U.S. and other countries.
6. **Leather appointed** may contain elements of genuine leather, polyurethane leather (leather substitute) or man-made materials, or a combination thereof.
7. **Wireless charging pad** requires a Qi-enabled smartphone or adapter in order to operate.

Hyundai Kona				
Occupant comfort & convenience	Active	Active with Safety Pack	Elite	Highlander
Windows/shades				
Power windows - front & rear	•	•	•	•
One touch window down function - driver's window	•	•	-	-
One touch window up & down function with anti-pinch safety feature - driver's window	-	-	•	•
Solar control glass	-	-	•	•
Rear privacy glass	-	-	•	•
Sunvisor (extendable) - driver and front passenger	•	•	•	•
Vision & sight	Active	Active with Safety Pack	Elite	Highlander
Interior mirror				
Electro-chromatic Mirror (ECM) - auto-dimming	-	-	-	•
Exterior mirrors				
Heated	-	•	•	•
Power adjustable	•	•	•	•
Power folding with auto fold function	-	•	•	•
Instrument cluster/driving displays				
Head-Up Display (HUD)	-	-	-	•
Instrument cluster - 3.5" TFT LCD with trip computer & digital speedometer	•	•	•	-
Supervision cluster - 4.2" TFT colour LCD with trip computer & digital speedometer	-	-	-	•
Ventilation & heating	Active	Active with Safety Pack	Elite	Highlander
Air conditioning				
Climate control - single zone with auto defog function	-	-	•	•
Manual controls	•	•	-	-
Cabin air filter	•	•	•	•
Cooling/heating vents - rear floor	•	•	•	•
Front seats				
Air ventilated front seats	-	-	-	•
Heated front seats	-	-	-	•
Other features				
Heated rear windshield	•	•	•	•
Heated steering wheel	-	-	-	•
Exterior styling	Active	Active with Safety Pack	Elite	Highlander
Front				
Front grille surround - black	•	•	-	-
Front grille surround - chrome	-	-	•	•
Front grille - black	•	•	-	-
Front grille - carbon grey	-	-	•	•
Side				
Side garnish insert - silver	-	-	•	•
Rear				
Spoiler - roof colour matched, tailgate mounted	•	•	•	•
Skid plate - silver	-	-	•	•
Interior styling	Active	Active with Safety Pack	Elite	Highlander
Treatments				
Black headlining	-	-	◦	◦
Piano black finish (interior door handles)	-	-	◦	◦
Piano black inserts (steering wheel)	-	-	◦	◦
Piano black surrounds (HVAC dials, air vents and transmission housing)	-	-	◦	◦


Key:
• = Feature is available on trim ◦ = Feature is available on trim only as part of an option pack - = Feature is not available on trim

Hyundai Kona				
Interior styling	Active	Active with Safety Pack	Elite	Highlander
Treatments				
Coloured stitching & piping - acid yellow/red (seats, steering wheel & gearshift boot)	-	-	◦	◦
Coloured seatbelts - acid yellow/red	-	-	◦	◦
Metallic acid yellow/red inserts (air vents, start button, steering wheel & transmission housing)	-	-	◦	◦
Materials				
Premium materials - door centre trim	-	-	•	•
Lighting	Active	Active with Safety Pack	Elite	Highlander
Exterior lighting - front				
Fog lights	-	-	•	•
Daytime Running Lights (DRL) - LED	•	•	•	•
Headlight functions - automatic dusk sensing with escort and welcome	•	•	•	•
Headlight type - LED (low/high beam)	-	-	-	•
Headlight type - projector beam	-	•	•	-
Positioning lights - LED	•	•	•	•
Static bending lights	-	-	-	•
Exterior lighting - rear				
Fog light	•	•	•	•
High Mount Stop Light (HMSL) - LED	•	•	•	•
Rear combination lights - LED (bulb indicator and reverse lights)	-	-	-	•
Exterior lighting - others				
Side repeaters - LED, integrated into side mirrors	•	•	•	•
Interior lighting - front				
Front room lights and map lights	•	•	•	•
Vanity mirror lights	•	•	•	•
Glovebox compartment light	•	•	•	•
Interior lighting - rear				
Centre room light	•	•	•	•
Interior lighting - others				
Cargo area light	•	•	•	•
Interior light fade-out delay	•	•	•	•
Storage solutions	Active	Active with Safety Pack	Elite	Highlander
Front seats				
Centre console - deluxe type	•	•	•	•
Cup holders - centre console	•	•	•	•
Front seat back pockets	-	-	•	•
Glovebox compartment	•	•	•	•
Retractable sunglasses compartment	•	•	•	•
Ticket holders - sunvisors (driver and front passenger)	•	•	•	•
Rear seats				
Coat hooks - 1x	•	•	•	•
Cup holders - armrest	•	•	•	•
Rear seating split folding - 60:40	•	•	•	•
Boot/Luggage area				
Bag hooks - 1x	•	•	•	•
Cargo shelf	•	•	•	•
Luggage compartment - 4x mounting points	•	•	•	•
Luggage net	-	-	•	•
Side storage recess - right side	•	•	•	•
Others				
Doors - map pockets and bottle bulges (front and rear)	•	•	•	•
Roof Rails	•	•	•	•



Kona.

 Like us at facebook.com/hyundaiaustralia

 Follow us at twitter.com/hyundaiaus

Hyundai Motor Company Australia

394 Lane Cove Road, Macquarie Park, NSW Australia 2113

www.hyundai.com.au

Hyundai Motor Company (HMC) and the Hyundai Motor Company Australia (HMCA) each reserve the right to alter vehicle specifications and equipment levels without notice. Some equipment featured on the cars in this brochure may not be available in Australia or may be optional. To the extent permitted by law, neither HMC nor HMCA shall be liable to any person as a result of reliance on the content of this brochure. Please consult your Hyundai Dealer for the latest specifications, equipment levels, options, prices, colours and vehicle availability. Metallic and mica paint are optional extras. Note: information in this brochure is current as at 01/11/17. Part No. OS1117B