

do the wild thing™

WRX
2017



SUBARU

do

do

do

do our best WRX yet

The better than ever Subaru WRX delivers just as much raw power, but with a newfound sophistication. The turbocharged Boxer engine and Symmetrical All-Wheel Drive dynamics are there of course, just as they have been for the 23 year history of this iconic vehicle.

Now there's precision to match. Hi-tech safety, state-of-the-art touchscreen infotainment with voice command and steering wheel controls, and the option of one of the best CVT automatic transmissions make the new WRX an altogether immersive driving experience.

Exhilarating power, ultimate control, refined comfort. What more could you want in life?

Do our best WRX yet.
Find out more at subaru.com.au/wrx-and-wrx-sti



WRX

power and precision

Did three letters ever conjure so much adrenaline? With 197kW of power and 350Nm of torque, Subaru WRX is easy to spot in a crowd.

There's a hint of the power that lies beneath in the muscular bearing of a WRX. Its 18" alloys, rear spoiler, mesh grille and sports body kit leave no doubt about it.

There's a lot to admire in the cabin as well. Prepare for take off in comfy sports bucket seats with cool red stitching, a feature you'll also notice on the D-shaped leather steering wheel as you eagerly take grip. Glance at the rear view reverse camera for the all clear, turn up the infotainment system with its 6.2" touchscreen. And go.

WRX features

Performance

- + 2.0-litre Direct Injection turbocharged horizontally-opposed Boxer engine
- + 6-speed manual transmission
- + Sports Lineartronic™ CVT transmission
- + Maximum power output: 197kW@5600rpm
- + Maximum torque: 350Nm@2400-5200rpm

Interior

- + Air-conditioning – dual zone climate control
- + Sports bucket seats – driver and front passenger with red stitching
- + Seat trim cloth – black
- + D-shaped leather steering wheel with red stitching
- + Manual seat height lifter – driver
- + 60/40 split folding rear seats

Exterior

- + 18" alloy wheels
- + Rear spoiler
- + Sports body kit
- + WRX sports mesh grille
- + Headlights – self-levelling LED low beam with auto off
- + Fog lights – front and rear

Entertainment / technology

- + Multi-Function Display unit (MFD)
- + Integrated infotainment system with 6.2" touchscreen
- + Bluetooth®¹ wireless technology
- + Rear view reverse camera
- + Auxiliary jack
- + USB connection

1. Bluetooth® is a registered trademark of Bluetooth SIG Inc. System operation ability is subject to Bluetooth® wireless technology specification of individual phone.

hyper drive

Step up to the Subaru WRX Premium for a 7" integrated infotainment system, featuring Pandora® and Siri®¹ compatibility, all delivered through 8 thumping harman kardon®² speakers.

To help keep you in control, the WRX Premium also boasts Subaru's Vision Assist, the latest in proactive and unobtrusive safety technologies that include blind spot monitoring, rear cross traffic alert, side view monitor and more.

Rain-sensing wipers, an electric sunroof, dusk-sensing LED headlights, an auto-dimming rear view mirror and satellite navigation add more premium touches to an awesome package.

WRX Premium features

Performance

- + 2.0-litre Direct Injection turbocharged horizontally-opposed Boxer engine
- + 6-speed manual transmission
- + Sports Lineartronic™ CVT transmission
- + Maximum power output: 197kW@5600rpm
- + Maximum torque: 350Nm@2400-5200rpm

Interior

- + Air-conditioning – dual zone climate control
- + Sports bucket seats – driver and front passenger with red stitching
- + Seat trim leather³ – black
- + D-shaped leather steering wheel with red stitching

- + 8-way power seat with dual memory – driver
- + 60/40 split folding rear seats
- + Smart key with push-start ignition
- + Auto-dimming rear view mirror

Exterior

- + 18" alloy wheels
- + Rear spoiler
- + Sports body kit
- + WRX sports mesh grille
- + Headlights – self-levelling LED low beam with auto off (dusk-sensing)
- + Fog lights – front and rear
- + Electric sunroof
- + Rain-sensing wipers

Entertainment / technology

- + Multi-Function Display unit (MFD)
- + Integrated infotainment system with 7" touchscreen
- + Satellite navigation
- + 8 harman kardon®² speakers, subwoofer and amplifier
- + Bluetooth®⁴ wireless technology
- + Rear view reverse camera
- + Auxiliary jack
- + USB connections (x2)
- + Vision Assist featuring:
 - + Side view monitor
 - + Blind spot monitor
 - + Lane change assist
 - + Rear cross traffic alert
 - + High beam assist

1. Requires compatible Siri® enabled Apple® device to be paired with the infotainment system. 2. harman kardon® is a registered trademark of HARMAN International Industries, Incorporated. 3. Some parts of the seating are not full natural leather. 4. Bluetooth® is a registered trademark of Bluetooth SIG Inc. System operation ability is subject to Bluetooth® wireless technology specification of individual phone.



why WRX?

Symmetrical force of power

Our All-Wheel Drive philosophy

Greater balance and control. That's the confidence you get from our unique Symmetrical All-Wheel Drive System, which delivers the drive distribution to all four wheels, all the time. Every Subaru WRX has an innate sense of balance from the ground up, thanks to a near perfect symmetrical layout.

Boxing clever

Our famous Subaru Boxer engine

While most engines stand vertically, ours lay flat. The famous Subaru Boxer engine delivers handling like no other engine can. Sitting horizontally in the engine bay, it moves like a boxer's fists with a punch and counterpunch action. Lightweight, low and flat, it makes for perfect balance and a much lower centre of gravity. It creates less noise and vibration too. All of this means better on-road handling for you. More stability. More performance. More fun. And a more confident drive.

DataDotDNA®

Every Subaru is fitted with advanced engine immobilisers and the DataDotDNA®¹ Theft Deterrent System. Microscopic dots are laser-etched with each vehicle's unique Vehicle Identification Number – making it a less attractive target for thieves.

Three Year Rebate on Theft Insurance Excess

DataDot Technology (Australia) Pty Ltd will pay your theft insurance excess² (up to a maximum of \$800 including GST) should your new Subaru be stolen and not recovered within 45 days, despite the presence of DataDotDNA® and warning labels.

Finest safety

5 star ANCAP safety across the range

With spirit, quality and imagination comes some serious safety innovation. We want every Subaru to be amongst the safest cars on the road. Engineered full of cutting-edge technologies and the most intelligent design features. It's not a Subaru unless it carries the maximum 5 star ANCAP³ safety rating.

Eyes in the back of your head

Rear view reverse camera

Manoeuvring back into a tight side street? Family driveway littered with toys? Reverse with confidence, thanks to our rear view reverse camera technology. The rear view reverse camera is like having eyes in the back of your head. This greatly improves your visibility and reduces the risk of bumps and scrapes. Rear view reverse camera standard on every Subaru WRX and WRX Premium.

Yet another world first

Lineartronic™ CVT

Pushing innovation beyond the bounds, we introduced an automatic transmission with no discernable steps or shifts. We called it Lineartronic™ CVT. And it's the reason our automatic models drive so smooth. It's the world's first longitudinally mounted system for AWD vehicles. Unlike a conventional automatic transmission – which uses fixed gear ratios – our Lineartronic™ CVT provides infinite variability between the highest and lowest available gears. So you now experience a smooth gear change, into any optimum gear for that moment. CVT available on Subaru WRX and WRX Premium.

Intelligently driven

Subaru Intelligent Drive

Heading to the shops? Taking on the Great Ocean Road? Each situation deserves a distinctive driving mode, so we crafted Subaru Intelligent Drive (SI-Drive) technology standard on all Subaru WRX CVT variants to do just that. Switch from smart, to sporty to even sportier. Intelligent (I) mode – perfect for everyday driving, Sport (S) mode – for enhanced acceleration and all-round sporty performance and Sport Sharp (S#) mode – for a truly thrilling drive.

cockpit perfection

The Subaru WRX driver has never been so well catered for inside the cockpit. The dashboard design is engineered for vision, control and super-connected infotainment with plenty of technology on offer. The integrated LCD display lets you make handsfree calls and choose your favourite tracks, thanks to voice and touchscreen functionality. A rear view reverse camera covers your rear just as satellite navigation on the WRX Premium keeps you heading in the right direction.



Infotainment system
WRX



Push-start ignition
WRX Premium



harman kardon^{®1} speakers
WRX Premium



SI-Drive steering wheel controls
CVT variants

1. harman kardon[®] is a registered trademark of HARMAN International Industries, Incorporated.

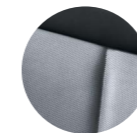


WRX Premium

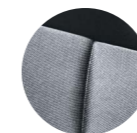
be inspired

Interior

On the inside Subaru WRX features black cloth. Sumptuous black leather¹ is standard on WRX Premium.



Leather
Black



Cloth
Black

Exterior

The colour you choose for your Subaru makes a bold statement about who you are. So we've made sure you've got lots of ways to express yourself – with a wide range of colours to make your Subaru more... you.



Crystal White
Pearl



Lapis Blue
Pearl



Dark Grey
Metallic



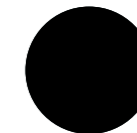
Ice Silver
Metallic



WR Blue
Pearl



Pure Red



Crystal Black
Silica

1. Some parts of the seating are not full natural leather.

Note: Paint colours are representative only and subject to variation due to the printing process.

WRX specifications¹

MODEL	WRX		WRX Premium	
	Sedan		Sedan	
Transmission				
6-speed manual transmission	•		•	
Sports Lineartronic™ CVT	•		•	
Engine				
Engine type	Direct Injection turbocharged horizontally-opposed Boxer 4-cylinder, petrol engine			
Valve mechanism	DOHC with Dual AVCS			
Bore x stroke	mm	86.0 x 86.0		
Capacity	cc	1998		
Compression ratio	10.6:1			
Fuel tank capacity	litres	60		
Fuel system	Direct injection			
Fuel requirement (min)	RON	95		
Performance²				
Maximum power output (DIN)	kW/rpm	197kW@5600rpm		
Maximum torque (DIN)	Nm/rpm	350Nm@2400-5200rpm		
Acceleration ³ 0 – 100 km/h	seconds	6.0 (MT) / 6.3 (CVT)		
Electronic Throttle Control system (ETC)	Drive-by-wire			
Fuel consumption (ADR 81/02) For comparison purposes only ⁴ :				
	combined	l/100km	9.2 (MT) / 8.6 (CVT)	
	urban	l/100km	12.8 (MT) / 11.9 (CVT)	
	extra urban	l/100km	7.1 (MT) / 6.7 (CVT)	
CO ₂ emissions (ADR 81/02)	combined	(g/km)	213 (MT) / 199 (CVT)	
Symmetrical All-Wheel Drive				
Type	Manual	Centre Differential with a Viscous Limited Slip Differential		
	Auto	Variable Torque Distribution		
Transmission				
Gear ratio	1st	3.454 (MT) / 3.505 (S#: 3.505) (CVT)		
	2nd	1.947 (MT) / 2.238 (S#: 2.405) (CVT)		
	3rd	1.366 (MT) / 1.641 (S#: 1.855) (CVT)		
	4th	1.029 (MT) / 1.194 (S#: 1.544) (CVT)		
	5th	0.825 (MT) / 0.880 (S#: 1.258) (CVT)		
	6th	0.666 (MT) / 0.611 (S#: 1.032) (CVT)		

1. Subaru Australia reserves the right to change mechanical specification and equipment levels without notice. 2. All performance data measured using 95RON as required by Australian Design Rule 81/02. Vehicles tested in accordance with ADR 81/02. 3. Acceleration test performed under controlled conditions. 4. Fuel consumption figures calculated in accordance with Australian Design Rule 81/02. Real world results may vary.

WRX specifications¹

MODEL	WRX		WRX Premium	
	7th	(S#: 0.856) (CVT)		
	8th	(S#: 0.716) (CVT)		
Gear ratio – reverse			3.636 (MT) / 2.345 (CVT)	
Final reduction gear ratio			4.444 (MT) / 3.900 (CVT)	
Steering				
Steering	Electric power assistance rack and pinion			
Minimum turning circle	m	11.0		
Suspension				
Type	Front	MacPherson struts inverted, lower L-arms, coil springs, stabiliser bar		
	Rear	Double wishbone, coil springs, stabiliser bar		
Brakes				
Type	Front	Ventilated disc brakes		
	Rear	Disc brakes		
Brake booster type	Tandem			
ABS	4-channel, 4-sensor ABS with Electronic Brakeforce Distribution			
Wheels and Tyres				
Tyre model	Dunlop SP Sport Maxx RT			
Tyres (width, profile, size, load index and speed rating)	245/40 R18 97W			
Rim size	18x8.5J			
Wheels	18"			
Spare wheel	Spacesaver wheel			
Measurement				
Overall length	mm	4595		
Overall width	mm	1795		
Overall height	mm	1475		
Wheel base	mm	2650		
Front track	mm	1530		
Rear track	mm	1540		
Minimum ground clearance ²	mm	135		
Cargo volume	litres	460		
Kerb weight ³	kg	1476 (MT) / 1534 (CVT)	1514 (MT) / 1572 (CVT)	
Tare mass ³	kg	1436 (MT) / 1494 (CVT)	1474 (MT) / 1532 (CVT)	
Seating capacity			5	

1. Subaru Australia reserves the right to change mechanical specification and equipment levels without notice. 2. Ground clearance at kerb weight. 3. Vehicle kerb weight and tare mass varies according to the types of optional equipment included.

WRX features¹

MODEL	WRX	WRX Premium
Safety Rating		
5 star ANCAP ² safety rating (maximum 5)	•	•
Collision Avoidance		
Symmetrical All-Wheel Drive (SAWD)	•	•
Vehicle Dynamics Control system (VDC) featuring:	•	•
Electronic Stability Control (ESC)	•	•
Anti-lock Braking System (ABS)	•	•
Electronic Brakeforce Distribution (EBD)	•	•
Brake Assist	•	•
Traction Control System (TCS)	•	•
Active Torque Vectoring system	•	•
4-wheel disc brakes	•	•
Hill Start Assist	•	•
Rear view reverse camera	•	•
Vision Assist featuring:		•
Side view monitor		•
Blind spot monitor		•
Lane change assist		•
Rear cross traffic alert		•
High beam assist		•
Collision Protection		
SRS ³ airbags – dual front, dual front side and curtain	•	•
SRS ³ airbags – knee airbag (driver only)	•	•
Front seat belts with pretensioners and load limiters	•	•
3 point A/ELR rear seat belts	•	•
Height adjustable seat belt anchors – driver and front passenger	•	•
Seat belt warning lights – all seats	•	•
Rear seat headrests for 3 seating positions	•	•
Height and angle adjustable front seat headrests	•	•
Height adjustable rear seat headrests	•	•
Ring-shaped passenger safety cell	•	•

1. Subaru Australia reserves the right to change mechanical specification and equipment levels without notice. 2. The Australasian New Car Assessment Program (ANCAP) gives consumers consistent information on the level of occupant protection provided by vehicles in serious front and side crashes. 3. SRS: Supplemental Restraint System. Effective when used in conjunction with seat belts.

WRX features¹

MODEL	WRX	WRX Premium
Child Safety		
Child seat anchor points (x3)	•	•
ISOFIX anchor points (x2)	•	•
Rear door child locks	•	•
Intelligent Driving Dynamics		
Electronic Throttle Control system (ETC)	•	•
Subaru Intelligent Drive (SI-Drive)	CVT	CVT
Intelligent (I) mode	CVT	CVT
Sport (S) mode	CVT	CVT
Sport Sharp (S#) mode	CVT	CVT
Chassis and Mechanism		
Front and rear stabiliser	•	•
Rear Limited Slip Differential (LSD) (manual)	Torsen	Torsen
Tie-rod type tandem brake booster system	•	•
Exterior		
Body coloured mirrors and door handles	•	•
Body coloured rear garnish	•	•
Bonnet scoop	•	•
Bonnet with gas struts	•	•
Brake calipers	Silver	Silver
Detachable module type windscreen wipers	•	•
Door mirrors with indicators – power folding	•	•
Dual twin tail pipes with covers	•	•
Electric sunroof		•
Engine cover	•	•
Privacy glass - rear door, rear quarter and rear windscreen	•	•
Fuel cap – tethered	•	•
Rear diffuser	•	•
Rear spoiler	•	•
Side garnish with WRX logo	•	•
Shark fin antenna	•	•
Spacesaver spare wheel	•	•

1. Subaru Australia reserves the right to change mechanical specification and equipment levels without notice.

WRX features¹

MODEL	WRX	WRX Premium
Sports body kit	•	•
WRX Sports mesh grille	•	•
18" alloy wheels	•	•
Lighting – Exterior		
Daytime running lights - halogen	•	•
Fog lights – front and rear	•	•
Headlights – self-levelling LED low beam with auto off	•	•
Headlights – dusk-sensing		•
Rear LED combination lights	•	•
Rear LED stoplight	•	•
Lighting – Interior		
Red interior illumination	•	•
Cabin and cargo area lights	•	•
Illuminated ignition ring	•	
Map lights (x2)	•	•
Air-conditioning		
Air-conditioning – dual zone climate control	•	•
Anti-dust filter	•	•
Front and side demisters	•	•
Heater ducts for rear passengers	•	•
Rear windscreen demister – electric with timer	•	•
Security		
DataDotDNA ^{®2} security system	•	•
Immobiliser security system	•	•
Instrumentation and Controls		
Adjustable steering wheel – height and telescopic	•	•
Electroluminescent gauges with colour MID	•	•
Instrument cluster	•	•
One touch lane change indicator	•	•
Paddle gear shift on steering column	CVT	CVT
Sports pedals	•	•
Steering wheel controls:	•	•
Audio, Cruise and <i>Bluetooth</i> ^{®3}	•	•
MID and SI-Drive (CVT)	•	•

1. Subaru Australia reserves the right to change mechanical specification and equipment levels without notice. 2. DataDotDNA[®] is a theft deterrent not a theft prevention mechanism. 3. *Bluetooth*[®] is a registered trademark of Bluetooth SIG Inc. System operation ability is subject to the *Bluetooth*[®] wireless technology specification of individual's phone.

WRX features¹

MODEL	WRX	WRX Premium
Multi-Function Display unit (MFD) featuring:	•	•
4.3" LCD screen	•	•
Outside temperature and clock display	•	•
Journey fuel economy information	•	•
Air-conditioning and seat belt display	•	•
Eco-gauge information	•	•
VDC operating information display	•	•
Vehicle condition/maintenance self-check	•	•
Turbo boost pressure display	•	•
Twin trip meter (switchable)	•	•
Storage		
Centre console box	•	•
Cupholders – centre console and rear	•	•
Door pockets with integrated bottle holder – front and rear	•	•
Front centre tray	WRX logo (MT)	WRX logo (MT)
Seat back pocket – driver and front passenger		•
Seat back pocket – front passenger	•	
Convenience		
12V/120W power jacks (x2)	•	•
Auto-dimming rear view mirror		•
Boot unlock on remote central locking keys	•	•
Driver's footrest	•	•
Sunvisor with illuminated vanity mirrors – driver and front passenger	•	•
Interior fuel lid lock release	•	•
Intermittent variable speed front windscreen wipers	•	•
Power steering and mirrors	•	•
Power windows – all with auto function	•	•
Rain-sensing front windscreen wipers		•
Remote central locking – selective unlock	•	•
Remote central locking keys (x2)	•	•
Smart key and push-start ignition		•
Interior Trims		
Carpet trim – black	•	•
Leather steering wheel, gear shift and park brake	•	•

1. Subaru Australia reserves the right to change mechanical specification and equipment levels without notice.

WRX features¹

MODEL	WRX	WRX Premium
MFD visor with red stitching	•	•
Seat trim – black cloth	•	
Seat trim – black leather ²		•
Sports bucket seats with red stitching – driver and front passenger	•	•
Seating Extras		
60/40 split folding rear seats	•	•
8-way power seat with dual memory – driver		•
Manual seat height lifter – driver	•	
Entertainment		
Integrated infotainment system featuring:	•	•
Satellite navigation		•
Single CD player	•	•
AM/FM radio	•	•
6 speakers	•	
8 harman kardon ³ speakers, subwoofer and amplifier		•
6.2" touchscreen	•	
7" touchscreen		•
Pandora [®] and Siri ^{®4} compatibility		•
Bluetooth ^{®5} wireless technology with:	•	•
Handsfree mobile communication	•	•
Audio streaming ⁶	•	•
Voice command recognition	•	•
Auxiliary jack – front centre console	•	•
USB connections – front centre console	x1	x2
Warranty		
3 Year/Unlimited km Warranty	•	•
3 Year/75,000km Capped Price Servicing Program ⁷	•	•
12 Month Roadside Assistance Program ⁸	•	•

1. Subaru Australia reserves the right to change mechanical specification and equipment levels without notice. 2. Some parts of the seating are not full natural leather. 3. harman kardon is a registered trademark of HARMAN International Industries, Incorporated. 4. Requires compatible Siri[®] enabled Apple[®] device to be paired with the infotainment system. 5. Bluetooth[®] is a registered trademark of Bluetooth SIG Inc. System operation ability is subject to the Bluetooth[®] wireless technology specification of individual's phone. 6. There may be restrictions on features available for certain models that are not fully compliant with AVCRP. 7. Available at participating Subaru Retailers only and does not apply to rental and some other classes of vehicle. For full Capped Price Servicing Program Terms and Conditions visit www.subaru.com.au/service/capped-price-servicing. Subaru BRZ variants are covered by our 3 Year/60,000 Kilometre Capped Price Servicing Program. 8. 12 Month Roadside Assistance Program is standard upon activation with relevant Motoring Club in each state. To receive this benefit the customer must opt into the 12 Month Roadside Assistance Program at time of vehicle delivery. Eligible customers are those retail and novated lease customers who purchase a new Subaru on or after 1st June 2013 and have less than 5 vehicles under the Club Membership offer. Customers must provide a valid phone and residential address, as well as date of birth. Fleet, Government and Rental companies are excluded.



WRX Premium

our best WRX yet made even better

For everything you do in your Subaru WRX and wherever you go, we've got some good kit to go with it. Style it up, spec it up and pack more in. Break the mould with sports inspired genuine accessories designed to Subaru's exacting standards.

- + Protection** Protect your WRX with a range of products including carpet mat sets, cargo trays, car covers and rear bumper protectors.
- + Cargo** To extend your WRX's carrying capacity we offer a broad range of Subaru and Thule® sport and cargo carrier accessories.
- + Security, Convenience and Safety** Keep your new wheels secure with a security alarm system and make tight parks easy with front corner and rear parking sensors. New parents will love 6-point-harness baby seats that integrate with Subaru WRX's ISOFIX anchor points.
- + STI Performance Parts** Tweak the performance of Subaru WRX for that extra edge. Bring out the beast under the bonnet with performance parts for optimum handling and control. Or spiff it up with aerodynamic spoilers.

Subaru Genuine Accessories are available from your Subaru Retailer, so be sure to ask about the range when buying your new Subaru WRX.

To view our complete range of accessories and pricing online visit subaru.com.au/wrx/accessories

do

do

do



packs that will inspire you

From coastal adventures to nights out in the city, this quality Subaru Genuine Accessory Pack will add a stylish flare like no other and give you the versatility you desire to stand out with your Subaru WRX.

Both stylish and functional, each Styling Pack¹ accessory has been custom made for a tailored fit to complement your Subaru WRX and keep it looking good for years to come.

Plus all Subaru Genuine Accessories are protected by our manufacturer's warranty².

Styling Pack¹ includes:

a STI Front Under Spoiler

Do corners and open road driving with more confidence, stability and handling, while adding stylish appeal.

c STI Rear Side Under Spoiler

Have some fun and finish first with sporty design detail for every last inch of your WRX.

b STI Side Under Spoiler

Enhance the stylish silhouette of your WRX with this sleek side spoiler designed to complement the vehicle's bodyline.

d STI Rear Under Spoiler

Complete the picture with this rear spoiler which improves overall vehicle aerodynamics and adds an aggressive, dynamic look.

1. Adding Styling Pack will lower ground clearance.

2. For full warranty terms and conditions, visit subaru.com.au/accessories-information/warranty

protect your investment

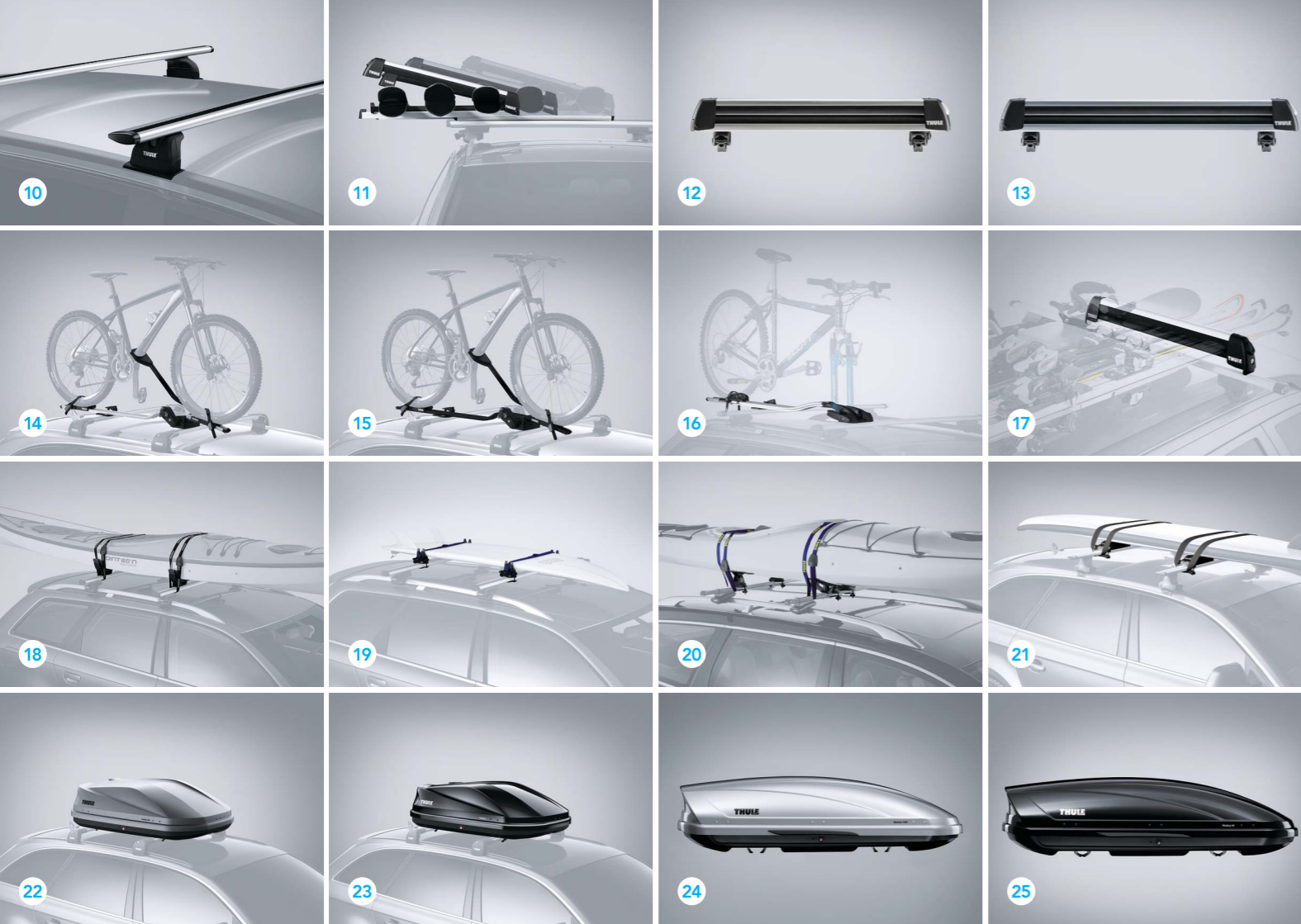
Get out and do more while protecting your WRX from the rough and tumble of daily life. From carpet mats to bumper protectors, each of the below accessories are tailored for a perfect fit.

ACCESSORY	Part Number	WRX	WRX Premium
Protection			
1 Carpet Mat Set	J501AVA201	•	•
2 Car Cover	M001SFJ000	•	•
3 Body Side Moulding (Painted)	J101SFJ000##	•	•
4 Rear Bumper Protector (Film Type)	E771SFJ600	•	•
5 Weather Shields	E3610FJ800	•	•
6 Bootlip and Bumper Protector	SAT6003	•	•
7 Cargo Tray	J501SFJ400	•	•
8 Side Sill Plate (Non-illuminated)	E101SVA000	•	•
9 Exhaust Surround	E7710VA700	•	•

	Not Applicable
STD	Part of Vehicle Specifications
•	Applicable

To view our complete range of accessories and pricing online visit subaru.com.au/wrx/accessories





do all the things you've planned

Get out amongst it and pack more into your weekends with premium quality accessories that let you easily and effortlessly take all your gear with you.

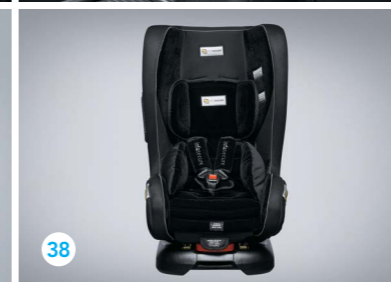
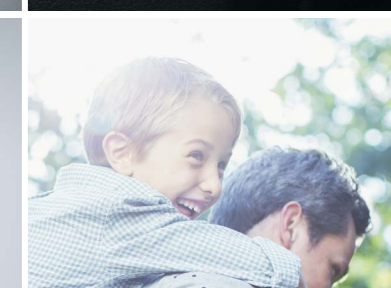
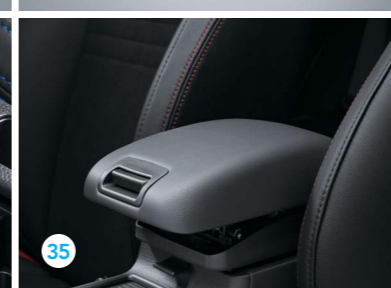
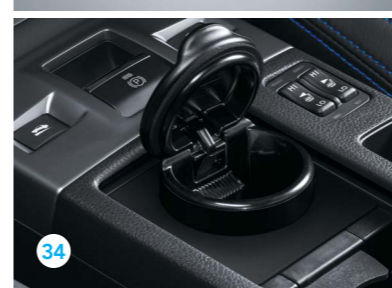
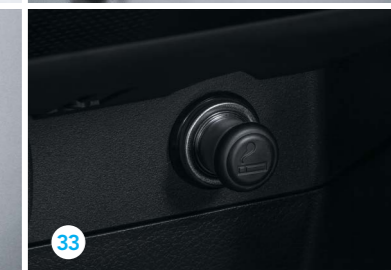
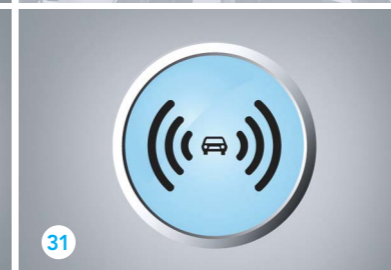
ACCESSORY	Part Number	WRX	WRX Premium
Cargo – Thule Roof Attachments (Roof Cross Bars Required):			
10 Roof Cross Bars	SAT3006	•	•
11 Xtender 6 Pair Ski Holder	SA1156	•	•
12 Deluxe 4 Pair Ski Holder	SAT8013	•	•
13 Deluxe 6 Pair Ski Holder	SAT8014	•	•
14 Bicycle Holder (Upright)	SAT8018	•	•
15 Bicycle Holder - Black (Upright)	SAT8019	•	•
16 Bicycle Holder (Fork Mounted)	SA1042	•	•
17 Universal Locking Arm	SA1043	•	•
18 Water Craft Holder	SA1044	•	•
19 Surfboard Carrier	SA1139	•	•
20 Thule Glide & Set (Kayak Carrier)	SAT8015	•	•
21 Thule Paddleboard & Mal Carrier	SAT8016	•	•
22 Luggage Pod Touring 100 (Titan Matt) Aueroskin Finish (Small)	SAT5008	•	•
23 Luggage Pod Touring 100 (Black Glossy) Smooth Finish (Small)	SAT5008B	•	•
24 Luggage Pod Motion 200 (Silver)	SAT5004	•	•
25 Luggage Pod Motion 200 (Black)	SAT5005	•	•

To view our complete range of accessories and pricing online visit subaru.com.au/wrx/accessories

ACCESSORY		Part Number	WRX	WRX Premium
Cargo – Thule Roof Attachments (Roof Cross Bars Required):				
26	Thule Go Box	SAT8005	•	•
27	Thule Go Pack Set (4 Bags)	SAT8006	•	•
28	Side Up Wheel Step	SAT9004	•	•
Security				
29	Wheel Lock Nuts	B327EYA000	•	•
30	Security Alarm System (Key Start)	H771AVA100	•	
31	Security Alarm System (Push Start)	H771AVA200		•
Convenience and Safety				
32	Rear and Front Corner Multi-Function Parking Sensors	H481AVA000##	•	
33	Cigarette Lighter	H6710FJ000	•	•
34	Ash Tray Holder ¹	F6010AG010	•	•
35	Arm Rest Extension	J2010AG000JD	•	•
36	First Aid Kit	PR7670	•	•
37	Safety Triangle	SAT9007	•	•
38	Baby Seat - Kompessor Beyond Midnight	SAC7004	•	•

1. Ash Tray available separately - Part Number 92172AG040

To view our complete range of accessories and pricing online visit subaru.com.au/wrx/accessories





kick it into overdrive

Up the ante on your Subaru WRX by enhancing its street appeal, cockpit aesthetics and driver dynamics with STI branded performance parts.

ACCESSORY	Part Number	WRX	WRX Premium
STI Performance Parts			
39 Flexible Tower Bar	ST20502VV000	•	•
40 Short Throw Shifter	C1010VA010	•	•
41 Push Start Engine Switch (Red)	ST83031ST012	•	•
42 STI Leather Shift Knob (CVT)	C1010SG101	•	•
43 STI Leather Shift Knob (6MT)	C1010FG100	•	•
44 STI Front Under Spoiler ¹	E2410VA000	•	•
45 STI Side Under Spoiler ¹	E2610VA000	•	•
46 STI Rear Side Under Spoiler ¹	E5610VA000	•	•
47 STI Rear Under Spoiler ¹	E5610VA120	•	•
48 Wheel Lock Nut Set (black)	ST28170ST020	•	•
49 Security Wheel Nut Set	ST28170ST060	•	•
50 Valve Cap Set	ST28102ST030	•	•
51 Battery Clamp/Holder	ST82182ST000	•	•
52 High Pressure Radiator Cap	ST4511355010	•	•
53 Sports Oil Filter	ST15208ST000	•	•
54 Oil Cap	ST15257ZR010	•	•

1. Will reduce ground clearance.

To view our complete range of accessories and pricing online visit subaru.com.au/wrx/accessories

welcome to the family

There are cars that simply get you from A to B, and then there are cars that empower you. Buying a Subaru is like embracing life with both hands and knowing that nothing is going to stop you. When you buy a new Subaru you are welcomed into an owner's program that gives you access to a number of benefits.



Subaru New Car Warranty – 3 Year/Unlimited Kilometres

Every new Subaru is covered by a three year unlimited kilometre manufacturer's national warranty. You can protect your investment further by purchasing an additional Subaru Assured New Vehicle Warranty¹ of up to three years. Visit subaru.com.au/warranty or ask your Subaru Retailer for more information.

Subaru Capped Price Servicing

With our 3 Year/75,000 Kilometre Capped Price Servicing Program², you'll now know the maximum amount you will have to pay

for your next scheduled service during the Program period. You'll also have peace of mind knowing that specialist Subaru technicians will be looking after your pride and joy using only Genuine Subaru Parts.



DataDotDNA[®]

Every Subaru is fitted with advanced engine immobilisers and the DataDotDNA^{®3} Theft Deterrent System. Microscopic dots are laser-etched with each vehicle's unique Vehicle Identification Number – making it a less attractive target for thieves.

Three Year Rebate on Theft Insurance Excess

DataDot Technology (Australia) Pty Ltd will pay your theft insurance excess⁴ (up to a maximum of \$800 including GST) should your new Subaru be stolen and not recovered within 45 days despite the presence of DataDotDNA[®] and warning labels.

1-Month Health Check and Chat

The 1-Month Health Check and Chat is a free consultation within the first month after delivery of your new Subaru. It allows our factory-trained technicians to provide quick vehicle checks, and one of our Service Advisors will answer any of your questions to help ensure an ongoing, worry-free experience.

Subaru's Map Updates

If your new Subaru is fitted with a factory line fit navigation unit your unit will be covered by Subaru's Map Update Program⁵ – guaranteeing you'll have access to the latest maps with our Latest Map Guarantee and our 3 Year Map Update Program (subject to the vehicle having its scheduled services performed through a participating authorised Subaru Service Centre).

My Subaru – online owner's destination

The My Subaru owner's portal is an online destination for owners which provides access

to exclusive benefits, tailored content, your vehicle's ownership history and much more. Login to My Subaru, the online destination for Subaru owners that will help you get more out of your vehicle, and more out of your life. Visit my.subaru.com.au

Subaru Roadside Assistance

Enjoy 12 months of Australia-wide, standard Roadside Assistance¹ provided in partnership with your local state Motoring Club – plus complimentary extras such as member magazines and Show Your Card and Save² discounts.

Subaru Preferred Collision Repairer Network

A dedicated Subaru Preferred Collision Repairer helpline is available on 1800 737 179, 24-hours a day, 7 days a week. Subaru Preferred Collision Repairers are committed to help ensure your vehicle is restored back to as close to manufacturer's specifications as possible with quality repairs and the use of genuine Subaru parts.

live life without limits

Genuine Accessories

Subaru Genuine Accessories are designed to enhance your vehicle, are factory approved by Subaru and are protected by the Genuine Subaru Accessories Warranty. For our full range of Subaru WRX accessories visit subaru.com.au/wrx/accessories. For warranty information visit subaru.com.au/warranty and click on "Genuine Subaru Accessories Warranty".

Subaru Finance

Subaru Finance³ provides a range of competitive financial solutions to approved customers. Our finance specialists will help you find a finance package to meet your needs conveniently.

Subaru Insurance

It's important to enjoy the freedom of owning a Subaru, but it's also important to protect it. A range of Subaru Insurance⁴ options provides a variety of choices, including: Subaru Comprehensive Motor Vehicle Insurance,

Subaru Motor Equity Insurance and Subaru Loan Protection Insurance.

Subaru Assured Used Vehicles

Every Subaru Assured Used Vehicle has passed a 120-point quality inspection and comes with a one year unlimited kilometre Subaru Assured Warranty⁵ – to complement the balance of a new vehicle warranty or the statutory warranty that remains – from participating Subaru Assured Retailers.

Subaru Active

At Subaru we believe in living life to the fullest – from cycling and triathlons, to holidays and the arts. Through Subaru Active we promote the importance of a balanced lifestyle through a number of sponsorships and associations.

Get active at subaru.com.au/active

1. The Subaru Assured Warranty product is issued by our appointed network of authorised retailers. Subaru Australia does not underwrite the warranty and has no liability in respect of this warranty. 2. Available at participating Subaru Retailers only and does not apply to rental and some other classes of vehicle. For full Capped Price Servicing Program Terms and Conditions visit www.subaru.com.au/service/capped-price-servicing. Subaru BRZ variants are covered by our 3 Year/60,000 Kilometre Capped Price Servicing Program. 3. DataDotDNA[®] is a theft deterrent not a theft prevention mechanism. 4. Vehicles must be comprehensively insured. Terms and conditions apply. 5. Subaru's Map Update Program available on MY17 WRX Premium. Subaru's Map Update Program is not available on accessory fit or dealer sourced navigation units. For full terms and conditions of the Subaru Map Update Program visit www.subaru.com.au/owner-experience/benefits/map-program. 3 Year Map Update Guarantee subject to the vehicle having its scheduled services performed at an authorised Subaru Service Centre during the program period.

1. 12 Month Roadside Assistance Program is standard upon activation with relevant Motoring Club in each state. To receive this benefit the customer must opt into the 12 Month Roadside Assistance Program at time of vehicle delivery. Eligible customers are those retail and novated lease customers who purchase a new Subaru on or after 1st June 2013 and have less than 5 vehicles under the Club Membership offer. Customers must provide a valid phone and residential address, as well as date of birth. Fleet, Government and Rental companies are excluded. 2. Offers valid until 31st August 2017. 3. Finance provided by Macquarie Leasing Pty Limited ABN 38 002 674 982 Australian Credit Licence Number 394925 trading as Subaru Finance. All applications for credit are subject to Macquarie's normal credit approval criteria. Terms and conditions, fees and charges apply. 4. Subaru Insurance products are issued by Allianz Australia Insurance Limited AFS Licence No. 234 708 ABN 15 000 122 850 (Allianz). In arranging this insurance Subaru (Aust) Pty Limited ABN 95 000 312 792 (Subaru) and the authorised dealers act as agents of Allianz and not as your agent. Neither Subaru nor any of its related companies or appointed authorised retailers have any liability in respect of these policies. 5. The Subaru Assured Warranty product is issued by our appointed network of authorised retailers. Subaru Australia does not underwrite the warranty and has no liability in respect of this warranty.

WRX Awards

- 2014 - Australasian New Car Assessment Program 5 star ANCAP safety rating
- 2011 - Australasian New Car Assessment Program 5 star ANCAP safety rating for the entire Impreza range
- 2009 - MOTOR Magazine, Bang For Your Bucks Winner, Subaru Impreza WRX
- 2008 - International Engine of the Year Award, 2.0 – 2.5-litre class, Subaru Impreza WRX (2.5-litre turbocharged horizontally-opposed Boxer engine)
- 2007 - Australasian New Car Assessment Program 5 star ANCAP safety rating for the entire Impreza range
- 2006 - International Engine of the Year Award, 2.0 – 2.5-litre class, Subaru Impreza WRX (2.5-litre turbocharged horizontally-opposed Boxer engine)
- 2005 - International Association of Autotheft Investigators (IAATI), Outstanding Achievement in the Reduction of Motor Vehicle Theft in Australia, Subaru Impreza WRX
- 2004 - Australia's Best Cars, Best Sports Car 2004 under \$57,000, Subaru Impreza WRX
- 2003 - Australia's Best Cars, Best Sports Car 2003 under \$57,000, Subaru Impreza WRX
- 2001 - Australia's Best Cars, Best Sports Car under \$56,000, Subaru Impreza WRX
- 2000 - Wheels Car of the Year, Subaru Impreza
 - QLD Car of the Year Awards, Outstanding Compact Car, Subaru Impreza
 - Car of the Decade, Car Magazine UK, Subaru Impreza WRX
 - Gold Medal in Sports/Performance Car Category, Which Car, Australia, Subaru Impreza WRX
- 1999 - Best Sports Car under \$56,000, NRMA/RACV, NSW & VIC, Subaru Impreza WRX

Subaru Australia reserves the right to vary vehicle specifications and standard features in Australia from those detailed in this brochure. Vehicles shown in this brochure may be fitted with accessories available at additional cost. No part of the brochure can be reproduced without written permission from Subaru Australia. Printed in Australia.

subaru.com.au

© Copyright 2016 – Subaru (Aust) Pty Limited. All rights reserved.
Subaru (Aust) Pty Limited ABN 95 000 312 792 (Subaru Australia) PO Box 8311, Baulkham Hills NSW 2153 Toll Free: 1800 226 643



2017

WRX STI



do ultimate
performance



SUBARU

do

do

do™

Do the ultimate.
Find out more at subaru.com.au/wrx-and-wrx-sti

do the ultimate

Subaru WRX STI is WRX, flexed.

With 221kW of power, 407Nm of torque, and a road-gripping low centre of gravity, the WRX STI delivers an exhilarating driving experience.

WRX STI is high performance and high precision, with a range of sophisticated tech at your fingertips. Its Multi-Function Display unit puts you in complete control while Subaru's protective, predictive and preventative safety features make this one of the safest WRX STI's Subaru has ever created.

Every bit comfortable and roomy as before, but with all the pure performance WRX STI is famous for, this is a car for drivers who live for the road.



WRX STI

get a grip

Gliding on straights or flung into corners, Subaru WRX STI is like a rocket on rails. Pure exhilaration. Effortless control.

And now, it has to be said, sleek sophistication.

Roomy and luxurious, the WRX STI's instrument cluster features easy to read white needles and driver-eye-candy racing style dials. WRX STI's signature colour scheme is there too – jet black with red highlights on gauges and stitching in the body-hugging sports seats.

WRX STI is fitted with a cutting-edge 7" integrated touchscreen infotainment with satellite navigation, Pandora® and Siri®¹ compatibility plus Bluetooth®² voice activation, all punched out through 8 harman kardon®³ speakers, subwoofer and amp.

The package is made complete with 18" alloy wheels, and for those who like their STI's crossed and dotted, a rear spoiler.

WRX STI features

Performance

- + 2.5-litre turbocharged horizontally-opposed Boxer engine
- + 6-speed manual transmission
- + Maximum power output: 221kW@6000rpm
- + Maximum torque: 407Nm@4000rpm

Interior

- + Air-conditioning – dual zone climate control
- + Sports bucket seats – driver and front passenger with red stitching and embossed STI logo
- + Seat trim – Alcantara® with leather⁴ accents

- + D-shaped leather steering wheel with red stitching
- + Smart key with push-start ignition
- + Manual seat height lifter – driver
- + 60/40 split folding rear seats

Exterior

- + 18" alloy wheels
- + Door mirrors with indicators - power folding
- + Rear spoiler (available without spoiler)
- + Sports body kit
- + STI sports mesh grille
- + Tail pipe covers
- + Headlights – self-levelling LED low beam with auto off (dusk-sensing)

- + Fog lights – front and rear
- + Rain-sensing wipers

Entertainment / technology

- + Multi-Function Display unit (MFD)
- + Integrated infotainment system with 7" touchscreen
- + Satellite navigation
- + 8 harman kardon®³ speakers, subwoofer and amplifier
- + Bluetooth®² wireless technology
- + Rear view reverse camera
- + Auxiliary jack
- + USB connections (x2)

1. Requires compatible Siri® enabled Apple® device to be paired with the infotainment system. 2. Bluetooth® is a registered trademark of Bluetooth SIG Inc. System operation ability is subject to Bluetooth® wireless technology specification of individual phone. 3. harman kardon® is a registered trademark of HARMAN International Industries, Incorporated. 4. Some parts of the seating are not full natural leather.

Get a grip.
Explore the range at subaru.com.au/wrx-sti/range

the premium edge

Subaru WRX STI Premium adds a number of enticing creature comforts, driver assists and innovative safety features to the fray.

Position yourself for action with an 8-way power seat, heated for your comfort of course, and peer into your auto-dimming rear view mirror before you commence your journey. WRX STI Premium also boasts de-icing front wipers and an electric sunroof.

WRX STI Premium also features Subaru's Vision Assist, the latest in proactive safety technologies that incorporate blind spot monitoring, rear cross traffic alert, side view monitor, lane change assist and high beam assist to add to the long list of 5 star Subaru safety attributes.

WRX STI Premium features

Performance

- + 2.5-litre turbocharged horizontally-opposed Boxer engine
- + 6-speed manual transmission
- + Maximum power output: 221kW@6000rpm
- + Maximum torque: 407Nm@4000rpm

Interior

- + Air-conditioning – dual zone climate control
- + Sports bucket seats – driver and front passenger with red stitching and embossed STI logo
- + Seat trim leather¹ – black with accents
- + D-shaped leather steering wheel with red stitching
- + Smart key with push-start ignition
- + 8-way power seat with dual memory – driver

- + 60/40 split folding rear seats
- + Heated seats – driver and front passenger
- + Auto-dimming rear view mirror

Exterior

- + 18" BBS alloy wheels
- + Door mirrors with indicators – power folding and heated
- + Rear spoiler (available without spoiler)
- + Sports body kit
- + STI sports mesh grille
- + Tail pipe covers
- + Headlights – self-levelling LED low beam with auto off (dusk-sensing)
- + Fog lights – front and rear
- + Rain-sensing wipers
- + Front wipers with de-icer
- + Electric sunroof

Entertainment / technology

- + Multi-Function Display unit (MFD)
- + Integrated infotainment system with 7" touchscreen
- + Satellite navigation
- + 8 harman kardon² speakers, subwoofer and amplifier
- + Bluetooth³ wireless technology
- + Rear view reverse camera
- + Auxiliary jack
- + USB connections (x2)
- + Vision Assist featuring:
 - + Side view monitor
 - + Blind spot monitor
 - + Lane change assist
 - + Rear cross traffic alert
 - + High beam assist

1. Some parts of the seating are not full natural leather.
2. harman kardon[®] is a registered trademark of HARMAN International Industries, Incorporated. 3. Bluetooth[®] is a registered trademark of Bluetooth SIG Inc. System operation ability is subject to Bluetooth[®] wireless technology specification of individual phone.

The premium edge.
Explore the range at subaru.com.au/wrx-sti/range



WRX STI Premium

why WRX STI?

Symmetrical force of power

Our All-Wheel Drive philosophy

Greater balance and control. That's the confidence you get from our unique Symmetrical All-Wheel Drive System, which delivers the drive distribution to all four wheels, all the time. Every Subaru WRX STI has an innate sense of balance from the ground up, thanks to a near perfect symmetrical layout.

Boxing clever

Our famous Subaru Boxer engine

While most engines stand vertically, ours lay flat. The famous Subaru Boxer engine delivers handling like no other engine can. Sitting horizontally in the engine bay, it moves like a boxer's fists with a punch and counterpunch action. Lightweight, low and flat, it makes for perfect balance and a much lower centre of gravity. It creates less noise and vibration too. All of this means better on-road handling for you. More stability. More performance. More fun. And a more confident drive.

DataDotDNA®

Every Subaru is fitted with advanced engine immobilisers and the DataDotDNA^{®1} Theft Deterrent System. Microscopic dots are laser-etched with each vehicle's unique Vehicle Identification Number – making it a less attractive target for thieves.

Three Year Rebate on Theft Insurance Excess

DataDot Technology (Australia) Pty Ltd will pay your theft insurance excess² (up to a maximum of \$800 including GST) should your new Subaru be stolen and not recovered within 45 days, despite the presence of DataDotDNA[®] and warning labels.

Finest safety

5 star ANCAP safety across the range

With spirit, quality and imagination comes some serious safety innovation. We want every Subaru to be amongst the safest cars on the road. Engineered full of cutting-edge technologies and the most intelligent design features. It's not a Subaru unless it carries the maximum 5 star ANCAP³ safety rating.

Eyes in the back of your head

Rear view reverse camera

Manoeuvring back into a tight side street? Family driveway littered with toys? Reverse with confidence, thanks to our rear view reverse camera technology. The rear view reverse camera is like having eyes in the back of your head. This greatly improves your visibility and reduces the risk of bumps and scrapes. Rear view reverse camera standard on every Subaru WRX STI and WRX STI Premium.

Intelligently driven

Subaru Intelligent Drive

Heading to the shops? Taking on the Great Ocean Road? Each situation deserves a distinctive driving mode, so we crafted Subaru Intelligent Drive (SI-Drive) technology available on all Subaru WRX STI variants to do just that. Switch from smart, to sporty to even sportier. Intelligent (I) mode – perfect for everyday driving, Sport (S) mode – for enhanced acceleration and all-round sporty performance and Sport Sharp (S#) mode – for a truly thrilling drive.

Ultimate control in your hands

Multi-mode Driver's Control Centre Differential (DCCD)

Do drive with confidence wherever your WRX STI takes you, from your daily city commute to rain soaked highways. Take control of your drive with Multi-mode DCCD, Subaru technology which optimises traction, handling response and all round performance.

With four distinct modes, the driver controls the centre Limited Slip Differential (LSD) to match the conditions and their individual driving style. Exclusive to Subaru WRX STI, Multi-mode DCCD features Auto mode for all round driving performance. When things get slippery dial up Auto (+) mode for optimal traction in the wet, while Auto (-) lets you enjoy sharp handling in dry conditions. Or select Manual mode to put the power back in your own hands and match the control setting to your drive.

immerse yourself

Subaru WRX STI's drive is matched by the experience in the cockpit thanks to a cutting-edge integrated infotainment system with its big, bright 7" LCD display. Make handsfree calls and play your favourite driving tunes through harman kardon^{®1} speakers with voice and touchscreen functionality. Bluetooth^{®2} wireless tech, satellite navigation and two USB connections are standard both on the WRX STI and WRX STI Premium variants, as is a rear view reverse camera.



SI-Drive controls
Both WRX STI variants



Push-start ignition
Both WRX STI variants



harman kardon^{®1} speakers
Both WRX STI variants



Audio steering wheel controls
Both WRX STI variants

1. harman kardon[®] is a registered trademark of HARMAN International Industries, Incorporated. 2. Bluetooth[®] is a registered trademark of Bluetooth SIG Inc. System operation ability is subject to Bluetooth[®] wireless technology specification of individual phone.



WRX STI Premium

be inspired

Interior

On the inside, Subaru WRX STI features black Alcantara[®] with leather¹ accents. Sumptuous black leather¹ is standard on WRX STI Premium.



Leather Black



Alcantara[®] with Leather Accents Black

Exterior

The colour you choose for your Subaru makes a bold statement about who you are. So we've made sure you've got lots of ways to express yourself – with a wide range of colours to make your Subaru more... you.



Crystal White Pearl



Lapis Blue Pearl



Dark Grey Metallic



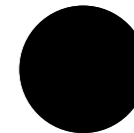
Ice Silver Metallic



WR Blue Pearl



Pure Red



Crystal Black Silica

1. Some parts of the seating are not full natural leather.

Note: Paint colours are representative only and subject to variation due to the printing process.

WRX STI specifications¹

MODEL	WRX STI		WRX STI Premium	
	Sedan		Sedan	
Transmission				
6-speed manual transmission	•		•	
Engine	Turbocharged horizontally-opposed Boxer 4-cylinder petrol engine			
Engine type	DOHC with Dual AVCS			
Valve mechanism	99.5 x 79.0			
Bore x stroke	mm	2457		
Capacity	cc	8.2:1		
Compression ratio		60		
Fuel tank capacity	litres	Multi point sequential injection		
Fuel system		98		
Fuel requirement (min)	RON			
Performance²				
Maximum power output (DIN)	kW/rpm	221kW@6000rpm		
Maximum torque (DIN)	Nm/rpm	407Nm@4000rpm		
Acceleration ³ 0 – 100 km/h	seconds	5.2		
Electronic Throttle Control system (ETC)		Drive-by-wire		
Fuel consumption (ADR 81/02) For comparison purposes only ⁴ :				
	combined	l/100km	10.4	
	urban	l/100km	14	
	extra urban	l/100km	8.4	
CO ₂ emissions (ADR 81/02)	combined	(g/km)	242	
Symmetrical All-Wheel Drive				
Type	Manual	Multi-mode Driver Controlled Centre Differential (DCCD)		
Transmission				
Gear ratio	1st	3.636		
	2nd	2.235		
	3rd	1.590		
	4th	1.137		
	5th	0.891		
	6th	0.707		

1. Subaru Australia reserves the right to change mechanical specification and equipment levels without notice. 2. All performance data measured using 95RON as required by Australian Design Rule 81/02. Vehicles tested in accordance with ADR 81/02. 3. Acceleration test performed under controlled conditions. 4. Fuel consumption figures calculated in accordance with Australian Design Rule 81/02. Real world results may vary.

WRX STI specifications¹

MODEL	WRX STI		WRX STI Premium	
Gear ratio – reverse			3.545	
Final reduction gear ratio			3.900	
Steering				
Steering	Quick ratio hydraulic power assisted rack and pinion			
Minimum turning circle	m	11.0		
Suspension				
Type	Front	MacPherson struts inverted, lower L-arms, coil springs, stabiliser bar		
	Rear	Double wishbone, coil springs, stabiliser bar		
Brakes				
Type	Front	Brembo 4pot front caliper with STI Logo, ventilated disc brake		
	Rear	Brembo 2pot rear caliper with STI Logo, ventilated disc brake		
Brake booster type	Tandem			
ABS	4-channel, 4-sensor ABS with Electronic Brakeforce Distribution			
Wheels and Tyres				
Tyre model	Dunlop SP Sport Maxx RT			
Tyres (width, profile, size, load index and speed rating)	245/40 R18 97W			
Rim size	18x8.5J			
Wheels	18"		18" BBS	
Spare wheel	Spacesaver wheel			
Measurement				
Overall length	mm	4595		
Overall width	mm	1795		
Overall height	mm	1475		
Wheel base	mm	2650		
Front track	mm	1530		
Rear track	mm	1540		
Minimum ground clearance ²	mm	135		
Cargo volume	litres	460		
Kerb weight ³	kg	1529	1545	
Tare mass ³	kg	1489	1505	
Seating capacity	5			

1. Subaru Australia reserves the right to change mechanical specification and equipment levels without notice. 2. Ground clearance at kerb weight. 3. Vehicle kerb weight and tare mass varies according to the types of optional equipment included.

WRX STI features¹

MODEL	WRX STI	WRX STI Premium
Safety Rating		
5 star ANCAP ² safety rating (maximum 5)	•	•
Collision Avoidance		
Symmetrical All-Wheel Drive (SAWD)	•	•
Vehicle Dynamics Control system (VDC) featuring:	•	•
Electronic Stability Control (ESC)	•	•
Anti-lock Braking System (ABS)	•	•
Electronic Brakeforce Distribution (EBD)	•	•
Brake Assist	•	•
Traction Control System (TCS)	•	•
Active Torque Vectoring system	•	•
Hill Start Assist	•	•
Rear view reverse camera	•	•
Vision Assist featuring:		•
Side view monitor		•
Blind spot monitor		•
Lane change assist		•
Rear cross traffic alert		•
High beam assist		•
Collision Protection		
SRS ³ airbags – dual front, dual front side and curtain	•	•
SRS ³ airbags – knee airbag (driver only)	•	•
Front seat belts with pretensioners and load limiters	•	•
3 point A/ELR rear seat belts	•	•
Height adjustable seat belt anchors – driver and front passenger	•	•
Seat belt warning lights – all seats	•	•
Rear seat headrests for 3 seating positions	•	•
Height and angle adjustable front seat headrests	•	•
Height adjustable rear seat headrests	•	•
Ring-shaped passenger safety cell	•	•
Child Safety		
Child seat anchor points (x3)	•	•
ISOFIX anchor points (x2)	•	•
Rear door child locks	•	•

1. Subaru Australia reserves the right to change mechanical specification and equipment levels without notice. 2. The Australasian New Car Assessment Program (ANCAP) gives consumers consistent information on the level of occupant protection provided by vehicles in serious front and side crashes. 3. SRS: Supplemental Restraint System. Effective when used in conjunction with seat belts.

WRX STI features¹

MODEL	WRX STI	WRX STI Premium
Intelligent Driving Dynamics		
Subaru Intelligent Drive (SI-Drive)	•	•
Multi-mode Driver Controlled Centre Differential (DCCD)	•	•
Electronic Throttle Control system (ETC)	•	•
Chassis and Mechanism		
Aluminium front lower arm	•	•
Clutch start system	•	•
Front and rear stabiliser	•	•
Front helical Limited Slip Differential (LSD)	•	•
Large intercooler	•	•
Rear Limited Slip Differential (LSD)	Torsen	Torsen
Red shrink-painted intake manifold	•	•
Tie-rod type tandem brake booster system	•	•
Exterior		
Body coloured mirrors and door handles	•	•
Body coloured rear garnish	•	•
Bonnet scoop	•	•
Bonnet with gas struts	•	•
Brake calipers – Black with STI logo	•	•
Door mirrors with indicators – power folding	•	Heated
Dual tail pipes – twin	•	•
Electric sunroof		•
Exterior grade badge	•	•
Front wipers with de-icer		•
Fuel cap – tethered	•	•
Rear diffuser	•	•
Privacy glass – rear door, rear quarter and rear windscreen	•	•
Rear spoiler (available without spoiler)	•	•
Shark fin antenna	•	•
Side garnish with STI logo	•	•
Spacesaver spare wheel	•	•
Sports body kit	•	•
STI sports mesh grille	•	•
Tail pipe covers	•	•

1. Subaru Australia reserves the right to change mechanical specification and equipment levels without notice.

WRX STI features¹

MODEL	WRX STI	WRX STI Premium
18" alloy wheels	•	
18" BBS alloy wheels		•
Lighting – Exterior		
Daytime running lights - halogen	•	•
Fog lights – front and rear	•	•
Headlights – dusk-sensing	•	•
Headlights – self-levelling LED low beam with auto off	•	•
Rear LED combination lights	•	•
Rear LED stoplight	•	•
Lighting – Interior		
Red interior illumination	•	•
Cabin and cargo area lights	•	•
Map lights (x2)	•	•
Air-conditioning		
Air-conditioning – dual zone climate control	•	•
Anti-dust filter	•	•
Front and side demisters	•	•
Heater ducts for rear passengers	•	•
Rear windscreen demister – electric with timer	•	•
Security		
DataDotDNA ^{®2} security system	•	•
Immobiliser security system	•	•
Instrumentation and Controls		
Adjustable steering wheel – height and telescopic	•	•
Electroluminescent gauges with colour MID	•	•
Instrument cluster	•	•
One touch lane change indicator	•	•
Sports pedals	•	•
Steering wheel controls:	•	•
Audio, Cruise, <i>Bluetooth</i> ^{®3} and MID	•	•
Multi-Function Display unit (MFD) featuring:	•	•
4.3" LCD screen	•	•

1. Subaru Australia reserves the right to change mechanical specification and equipment levels without notice. 2. DataDotDNA[®] is a theft deterrent not a theft prevention mechanism. 3. *Bluetooth*[®] is a registered trademark of Bluetooth SIG Inc. System operation ability is subject to the *Bluetooth*[®] wireless technology specification of individual's phone.

WRX STI features¹

MODEL	WRX STI	WRX STI Premium
Outside temperature and clock display	•	•
Journey fuel economy information	•	•
Air-conditioning and seat belt display	•	•
Eco-gauge information	•	•
VDC operating information display	•	•
Vehicle condition/maintenance self-check	•	•
Turbo boost pressure display	•	•
Twin trip meter (switchable)	•	•
Storage		
Centre console box	•	•
Cupholders – centre console with sliding lid	•	•
Cupholders – rear	•	•
Door pockets with integrated bottle holder – front and rear	•	•
Front centre tray – with STI logo	•	•
Seat back pocket – driver and front passenger	•	•
Convenience		
12V/120W power jacks (x2)	•	•
Auto-dimming rear view mirror		•
Boot unlock on remote central locking keys	•	•
Driver's footrest	•	•
Sunvisor with illuminated vanity mirrors – driver and front passenger	•	•
Interior fuel lid lock release	•	•
Intermittent variable speed front windscreen wipers	•	•
Power steering and mirrors	•	•
Power windows - all with auto function	•	•
Rain-sensing front windscreen wipers	•	•
Remote central locking – selective unlock	•	•
Remote central locking keys (x2)	•	•
Smart key and push-start ignition	•	•
Interior Trims		
Carpet trim – black	•	•
Leather steering wheel, gear shift and park brake	•	•

1. Subaru Australia reserves the right to change mechanical specification and equipment levels without notice.

WRX STI features¹

MODEL	WRX STI	WRX STI Premium
Seat trim – black leather ²	Alcantara [®] with leather ² accents	•
MFD visor with red stitching	•	•
Side step stainless steel plates with STI logo (front only)	•	•
Sports bucket seats – driver and front passenger with red stitching and embossed STI logo	•	•
Seating Extras		
60/40 split folding rear seats	•	•
8-way power seat with dual memory – driver		•
Heated seats – driver and front passenger		•
Manual seat height lifter – driver	•	
Entertainment		
Integrated infotainment system featuring:	•	•
Satellite navigation	•	•
Single CD player	•	•
AM/FM radio	•	•
8 harman kardon ^{®3} speakers, subwoofer and amplifier	•	•
7" touchscreen	•	•
Pandora [®] and Siri ^{®4} compatibility	•	•
Bluetooth ^{®5} wireless technology with:	•	•
Handsfree mobile communication	•	•
Audio streaming ⁶	•	•
Voice command recognition	•	•
Auxiliary jack – front centre console	•	•
USB connection (x2) – front centre console	•	•
Warranty		
3 Year/Unlimited km Warranty	•	•
3 Year/75,000km Capped Price Servicing Program ⁷	•	•
12 Month Roadside Assistance Program ⁸	•	•

1. Subaru Australia reserves the right to change mechanical specification and equipment levels without notice. 2. Some parts of the seating are not full natural leather. 3. harman kardon is a registered trademark of HARMAN International Industries, Incorporated. 4. Requires compatible Siri[®] enabled Apple[®] device to be paired with the infotainment system. 5. Bluetooth[®] is a registered trademark of Bluetooth SIG Inc. System operation ability is subject to the Bluetooth[®] wireless technology specification of individual's phone. 6. There may be restrictions on features available for certain models that are not fully compliant with AVCRP. 7. Available at participating Subaru Retailers only and does not apply to rental and some other classes of vehicle. For full Capped Price Servicing Program Terms and Conditions visit www.subaru.com.au/service/capped-price-servicing. Subaru BRZ variants are covered by our 3 Year/60,000 Kilometre Capped Price Servicing Program. 8. 12 Month Roadside Assistance Program is standard upon activation with relevant Motoring Club in each state. To receive this benefit the customer must opt into the 12 Month Roadside Assistance Program at time of vehicle delivery. Eligible customers are those retail and novated lease customers who purchase a new Subaru on or after 1st June 2013 and have less than 5 vehicles under the Club Membership offer. Customers must provide a valid phone and residential address, as well as date of birth. Fleet, Government and Rental companies are excluded.



WRX STI Premium

our best WRX STI made even better

Subaru WRX STI drivers tend to be discerning, so we've got all the bells and whistles required to customise your pride and joy to exact requirements.

- + Protection** Protect your Subaru WRX STI with a range of products including carpet mat sets, cargo trays, car covers and rear bumper protectors.
- + Cargo** To extend your Subaru WRX STI's carrying capacity we offer a broad range of Subaru and Thule® sport and cargo carrier accessories.
- + Security, Convenience and Safety** Keep your new wheels secure with a security alarm system and make tight parks easy with front corner and rear parking sensors. New parents will love 6-point-harness baby seats that integrate with Subaru WRX STI's ISOFIX anchor points.
- + STI Performance Parts** Tweak the performance of your Subaru WRX STI for that extra edge. Bring out the beast under the bonnet with performance parts for optimum handling and control. Or spiff it up with a stylish leather gear knob and our range of aerodynamic spoilers.

Subaru Genuine Accessories are available from your Subaru Retailer, so be sure to ask about the range when buying your new Subaru WRX STI.

To view our complete range of accessories and pricing online visit subaru.com.au/wrx-sti/accessories

do

do

do



packs that will inspire you

From coastal adventures to nights out in the city, this quality Subaru Genuine Accessory Pack will add a stylish flare like no other and give you the versatility you desire to stand out with your Subaru WRX STI.

Both stylish and functional, each Styling Pack¹ accessory has been custom made for a tailored fit to complement your Subaru WRX STI and keep it looking good for years to come.

Plus all Subaru Genuine Accessories are protected by our manufacturer's warranty².

Styling Pack¹ includes:

a STI Front Under Spoiler

Do corners and open road driving with more confidence, stability and handling, while adding stylish appeal.

c STI Rear Side Under Spoiler

Have some fun and finish first with sporty design detail for every last inch of your WRX STI.

b STI Side Under Spoiler

Enhance the stylish silhouette of your WRX STI with this sleek side spoiler designed to complement the vehicle's bodyline.

d STI Rear Under Spoiler

Complete the picture with this rear spoiler which improves overall vehicle aerodynamics and adds an aggressive, dynamic look.

1. Adding Styling Pack will lower ground clearance.

2. For full warranty terms and conditions, visit subaru.com.au/accessories-information/warranty

protect your investment

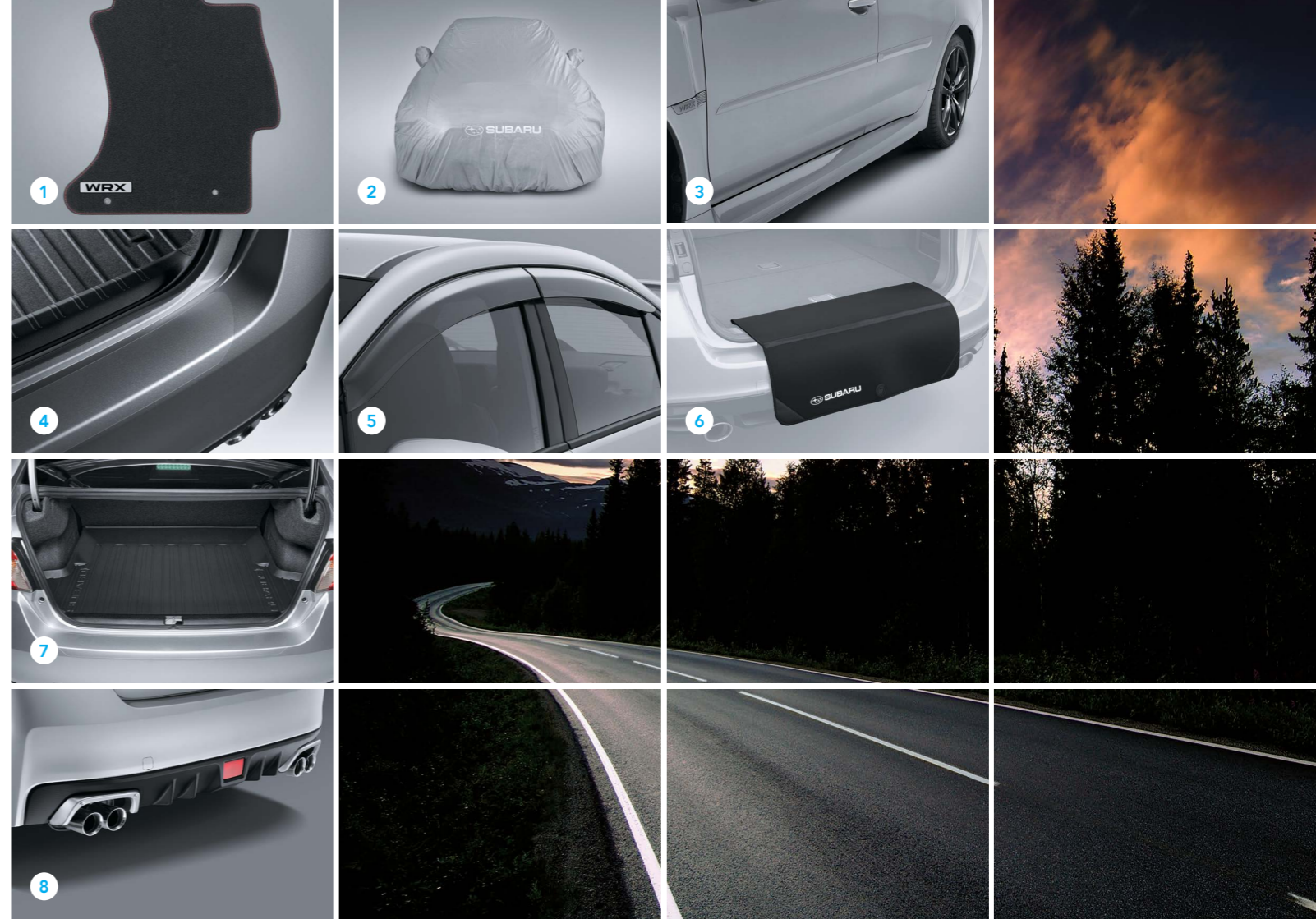
Get out and do more while protecting your WRX STI from the rough and tumble of daily life. From carpet mats to bumper protectors, each of the below accessories are tailored for a perfect fit.

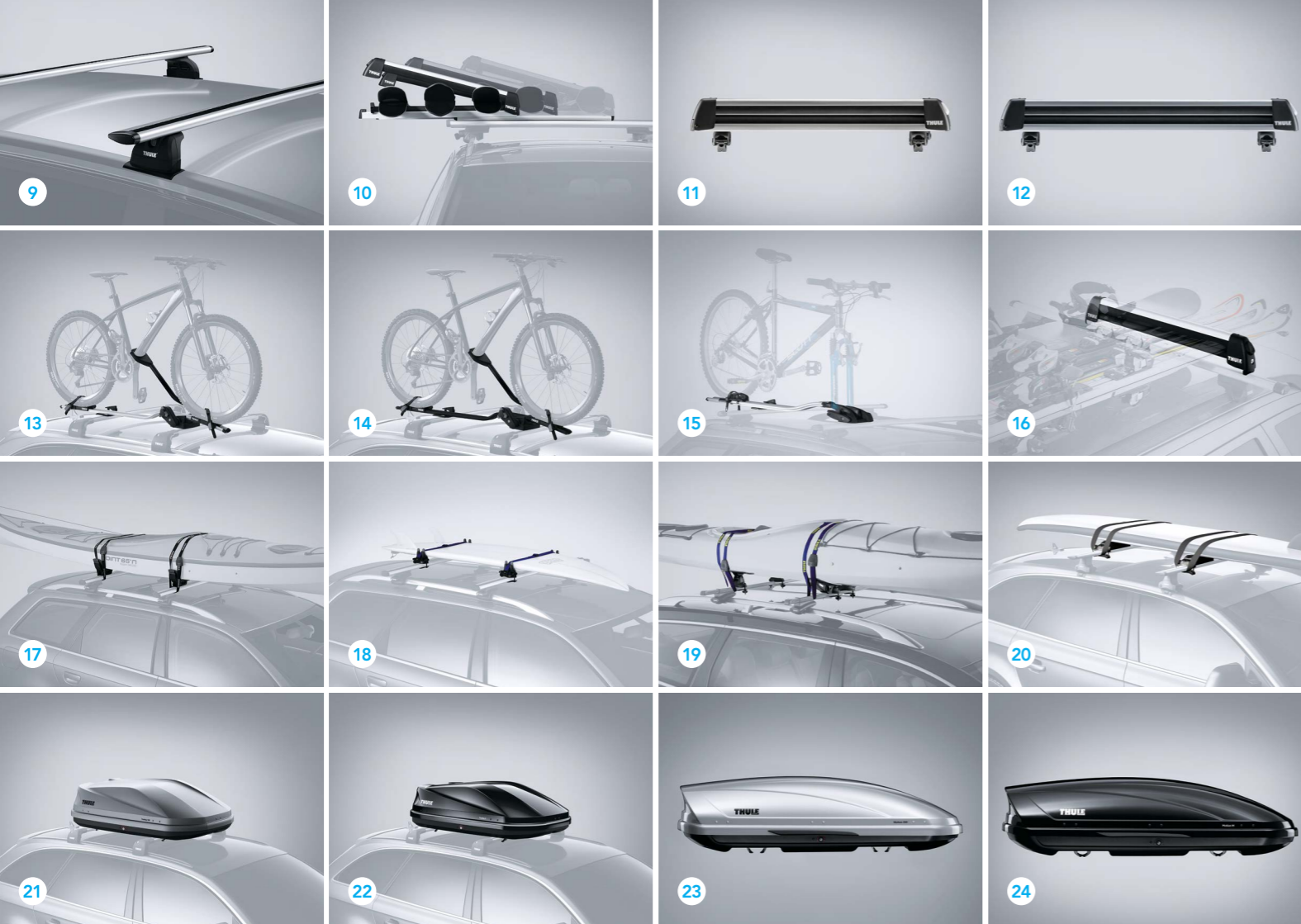
ACCESSORY	Part Number	WRX STI	WRX STI Premium
Protection			
1 Carpet Mat Set	J501AVA101	•	•
2 Car Cover ¹	M001SFJ000	•	•
3 Body Side Moulding (Painted)	J101SFJ000##	•	•
4 Rear Bumper Protector (Film Type)	E771SFJ600	•	•
5 Weather Shields	E3610FJ800	•	•
6 Bootlip and Bumper Protector	SAT6003	•	•
7 Cargo Tray	J501SFJ400	•	•
8 Exhaust Surround	E7710VA700	•	•

1. Car Cover not compatible with rear spoiler.

	Not Applicable
STD	Part of Vehicle Specifications
•	Applicable

To view our complete range of accessories and pricing online visit subaru.com.au/wrx-sti/accessories





do all the things you've planned

Get out amongst it and pack more into your weekends with premium quality accessories that let you easily and effortlessly take all your gear with you.

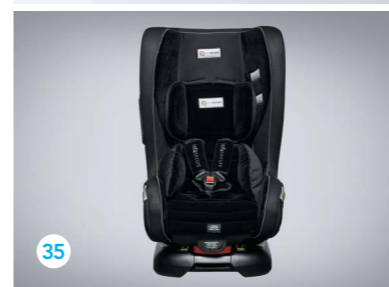
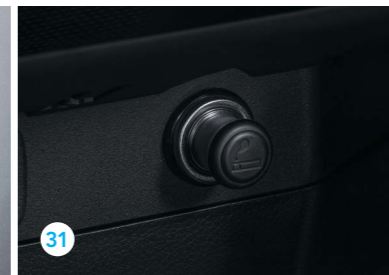
ACCESSORY	Part Number	WRX STI	WRX STI Premium
Cargo – Thule Roof Attachments (Roof Cross Bars Required):			
9	Roof Cross Bars	SAT3006	•
10	Xtender 6 Pair Ski Holder	SA1156	•
11	Deluxe 4 Pair Ski Holder	SAT8013	•
12	Deluxe 6 Pair Ski Holder	SAT8014	•
13	Bicycle Holder (Upright)	SAT8018	•
14	Bicycle Holder - Black (Upright)	SAT8019	•
15	Bicycle Holder (Fork Mounted)	SA1042	•
16	Universal Locking Arm	SA1043	•
17	Water Craft Holder	SA1044	•
18	Surfboard Carrier	SA1139	•
19	Thule Glide & Set (Kayak Carrier)	SAT8015	•
20	Thule Paddleboard & Mal Carrier	SAT8016	•
21	Luggage Pod Touring 100 (Titan Matt) Aueroskin Finish (Small)	SAT5008	•
22	Luggage Pod Touring 100 (Black Glossy) Smooth Finish (Small)	SAT5008B	•
23	Luggage Pod Motion 200 (Silver)	SAT5004	•
24	Luggage Pod Motion 200 (Black)	SAT5005	•

To view our complete range of accessories and pricing online visit subaru.com.au/wrx-sti/accessories

ACCESSORY		Part Number	WRX STI	WRX STI Premium
Cargo – Thule Roof Attachments (Roof Cross Bars Required):				
25	Thule Go Box	SAT8005	•	•
26	Thule Go Pack Set (4 Bags)	SAT8006	•	•
27	Side Up Wheel Step	SAT9004	•	•
Security				
28	Wheel Lock Nuts	B327EYA000	•	•
29	Security Alarm System (Push-Start)	H771AVA200	•	•
Convenience and Safety				
30	Rear and Front Corner Multi-Function Parking Sensors	H481AVA000##	•	
31	Cigarette Lighter	H6710FJ000	•	•
32	Ash Tray Holder ¹	F6010AG010	•	•
33	First Aid Kit	PR7670	•	•
34	Safety Triangle	SAT9007	•	•
35	Baby Seat - Kompessor Beyond Midnight	SAC7004	•	•

1. Ash Tray available separately - Part Number 92172AG040

To view our complete range of accessories and pricing online visit subaru.com.au/wrx-sti/accessories





kick it into overdrive

Up the ante on your Subaru WRX STI by enhancing its street appeal, cockpit aesthetics and driver dynamics with STI branded performance parts.

ACCESSORY	Part Number	WRX STI	WRX STI Premium
STI Performance Parts			
36 Flexible Tower Bar	ST20502VV010	•	•
37 Short Throw Shifter	C1010FG600	•	•
38 Competition Timing Belt	ST130284S000	•	•
39 Push Start Engine Switch (Red)	ST83031ST012	•	•
40 STI Leather Shift Knob (6MT)	C1010FG100	•	•
41 STI Front Under Spoiler ¹	E2410VA000	•	•
42 STI Side Under Spoiler ¹	E2610VA000	•	•
43 STI Rear Side Under Spoiler ¹	E5610VA000	•	•
44 STI Rear Under Spoiler ¹	E5610VA120	•	•
45 Wheel Lock Nut Set (black)	ST28170ST020	•	•
46 Security Wheel Nut Set	ST28170ST060	•	•
47 Valve Cap Set	ST28102ST030	•	•
48 Battery Clamp/Holder	ST82182ST000	•	•
49 High Pressure Radiator Cap	ST4511355010	•	•
50 Sports Oil Filter	ST152084S000	•	•
51 Oil Cap	ST15257ZR010	•	•

1. Will reduce ground clearance.

To view our complete range of accessories and pricing online visit subaru.com.au/wrx-sti/accessories

welcome to the family

There are cars that simply get you from A to B, and then there are cars that empower you. Buying a Subaru is like embracing life with both hands and knowing that nothing is going to stop you. When you buy a new Subaru you are welcomed into an owner's program that gives you access to a number of benefits.



Subaru New Car Warranty – 3 Year/Unlimited Kilometres

Every new Subaru is covered by a three year unlimited kilometre manufacturer's national warranty. You can protect your investment further by purchasing an additional Subaru Assured New Vehicle Warranty¹ of up to three years. Visit subaru.com.au/warranty or ask your Subaru Retailer for more information.

Subaru Capped Price Servicing

With our 3 Year/75,000 Kilometre Capped Price Servicing Program², you'll now know the maximum amount you will have to pay

for your next scheduled service during the Program period. You'll also have peace of mind knowing that specialist Subaru technicians will be looking after your pride and joy using only Genuine Subaru Parts.



DataDotDNA®

Every Subaru is fitted with advanced engine immobilisers and the DataDotDNA^{®3} Theft Deterrent System. Microscopic dots are laser-etched with each vehicle's unique Vehicle Identification Number – making it a less attractive target for thieves.

Three Year Rebate on Theft Insurance Excess

DataDot Technology (Australia) Pty Ltd will pay your theft insurance excess⁴ (up to a maximum of \$800 including GST) should your new Subaru be stolen and not recovered within 45 days, despite the presence of DataDotDNA[®] and warning labels.

1-Month Health Check and Chat

The 1-Month Health Check and Chat is a free consultation within the first month after delivery of your new Subaru. It allows our factory-trained technicians to provide quick vehicle checks, and one of our Service Advisors will answer any of your questions to help ensure an ongoing, worry-free experience.

Subaru's Map Updates

If your new Subaru is fitted with a factory line fit navigation unit your unit will be covered by Subaru's Map Update Program⁵ – guaranteeing you'll have access to the latest maps with our Latest Map Guarantee and our 3 Year Map Update Program (subject to the vehicle having its scheduled services performed through a participating authorised Subaru Service Centre).

My Subaru – online owner's destination

The My Subaru owner's portal is an online destination for owners which provides access

to exclusive benefits, tailored content, your vehicle's ownership history and much more. Login to My Subaru, the online destination for Subaru owners that will help you get more out of your vehicle, and more out of your life. Visit my.subaru.com.au

Subaru Roadside Assistance

Enjoy 12 months of Australia-wide, standard Roadside Assistance¹ provided in partnership with your local state Motoring Club – plus complimentary extras such as member magazines and Show Your Card and Save² discounts.

Subaru Preferred Collision Repairer Network

A dedicated Subaru Preferred Collision Repairer helpline is available on 1800 737 179, 24-hours a day, 7 days a week. Subaru Preferred Collision Repairers are committed to help ensure your vehicle is restored back to as close to manufacturer's specifications as possible with quality repairs and the use of genuine Subaru parts.

live life without limits

Genuine Accessories

Subaru Genuine Accessories are designed to enhance your vehicle, are factory approved by Subaru and are protected by the Genuine Subaru Accessories Warranty. For our full range of Subaru WRX STI accessories visit subaru.com.au/wrx-sti/accessories. For warranty information visit subaru.com.au/warranty and click on "Genuine Subaru Accessories Warranty".

Subaru Finance

Subaru Finance³ provides a range of competitive financial solutions to approved customers. Our finance specialists will help you find a finance package to meet your needs conveniently.

Subaru Insurance

It's important to enjoy the freedom of owning a Subaru, but it's also important to protect it. A range of Subaru Insurance⁴ options provides a variety of choices, including: Subaru

Comprehensive Motor Vehicle Insurance, Subaru Motor Equity Insurance and Subaru Loan Protection Insurance.

Subaru Assured Used Vehicles

Every Subaru Assured Used Vehicle has passed a 120-point quality inspection and comes with a one year unlimited kilometre Subaru Assured Warranty⁵ – to complement the balance of a new vehicle warranty or the statutory warranty that remains – from participating Subaru Assured Retailers.

Subaru Active

At Subaru we believe in living life to the fullest – from cycling and triathlons, to holidays and the arts. Through Subaru Active we promote the importance of a balanced lifestyle through a number of sponsorships and associations.

Get active at subaru.com.au/active

1. The Subaru Assured Warranty product is issued by our appointed network of authorised retailers. Subaru Australia does not underwrite the warranty and has no liability in respect of this warranty. 2. Available at participating Subaru Retailers only and does not apply to rental and some other classes of vehicle. For full Capped Price Servicing Program Terms and Conditions visit www.subaru.com.au/service/capped-price-servicing. Subaru BRZ variants are covered by our 3 Year/60,000 Kilometre Capped Price Servicing Program. 3. DataDotDNA[®] is a theft deterrent not a theft prevention mechanism. 4. Vehicles must be comprehensively insured. Terms and conditions apply. 5. Subaru's Map Update Program available on MY17 WRX STI and WRX STI Premium. Subaru's Map Update Program is not available on accessory fit or dealer sourced navigation units. For full terms and conditions of the Subaru Map Update Program visit www.subaru.com.au/owner-experience/benefits/map-program. 3 Year Map Update Guarantee subject to the vehicle having its scheduled services performed at an authorised Subaru Service Centre during the program period.

1. 12 Month Roadside Assistance Program is standard upon activation with relevant Motoring Club in each state. To receive this benefit the customer must opt into the 12 Month Roadside Assistance Program at time of vehicle delivery. Eligible customers are those retail and novated lease customers who purchase a new Subaru on or after 1st June 2013 and have less than 5 vehicles under the Club Membership offer. Customers must provide a valid phone and residential address, as well as date of birth. Fleet, Government and Rental companies are excluded. 2. Offers valid until 31st August 2017. 3. Finance provided by Macquarie Leasing Pty Limited ABN 38 002 674 982 Australian Credit Licence Number 394925 trading as Subaru Finance. All applications for credit are subject to Macquarie's normal credit approval criteria. Terms and conditions, fees and charges apply. 4. Subaru Insurance products are issued by Allianz Australia Insurance Limited AFS Licence No. 234 708 ABN 15 000 122 850 (Allianz). In arranging this insurance Subaru (Aust) Pty Limited ABN 95 000 312 792 (Subaru) and the authorised dealers act as agents of Allianz and not as your agent. Neither Subaru nor any of its related companies or appointed authorised retailers have any liability in respect of these policies. 5. The Subaru Assured Warranty product is issued by our appointed network of authorised retailers. Subaru Australia does not underwrite the warranty and has no liability in respect of this warranty.

WRX STI Awards

2014 - Carsales, Car of the Year, Best Performance Car Under \$100,000

2014 - Australasian New Car Assessment Program 5 star ANCAP safety rating

2011 - Australasian New Car Assessment Program 5 star ANCAP safety rating for the entire Impreza range

2007 - Australasian New Car Assessment Program 5 star ANCAP safety rating for the entire Impreza range

2005 - MOTOR Magazine, Bang For Your Bucks Winner

1996 - 2005 - Australian Rally Driver's Championship from 1996 through to 2005

1997 - 2005 - Australian Rally Manufacturer's Championship in 1997, 1998, 1999, 2000, 2001, 2002, 2003, 2004 and 2005

Subaru Australia reserves the right to vary vehicle specifications and standard features in Australia from those detailed in this brochure. Vehicles shown in this brochure may be fitted with accessories available at additional cost. No part of the brochure can be reproduced without written permission from Subaru Australia. Printed in Australia.

subaru.com.au

© Copyright 2016 – Subaru (Aust) Pty Limited. All rights reserved.
Subaru (Aust) Pty Limited ABN 95 000 312 792 (Subaru Australia) PO Box 8311, Baulkham Hills NSW 2153 Toll Free: 1800 226 643

