

# Accent.





## Exceptional standards.

We have one goal – to be Australia's most loved car company.

And to get there, we're driven by a simple philosophy that life's most incredible moments shouldn't be reserved for a select few. Everyone should be able to experience an exciting and enjoyable drive.

So how do we make that happen? We start by pushing our own boundaries, by making premium the new standard. And by engineering the most enjoyable ride possible.

The Accent is everything you could ask for in a small, yet highly energetic car. Put yourself in the driver's seat and get ready to have the style, comfort and technology of the Accent to set your world in motion.

You can be sure we've put it through its paces. With an extensive local development program, the Accent is perfectly suited to Australian conditions. Korean engineering and Australian testing – a global contribution to this local hero.

**Accent.**

# Safety first, and always.

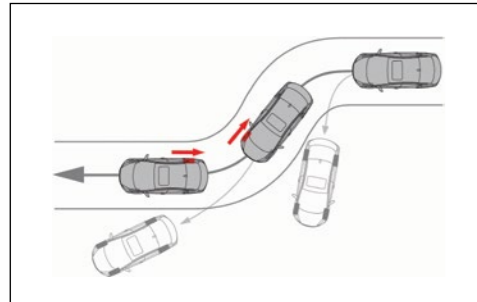
At Hyundai, we believe maximum safety should come as standard. That's why we designed the Accent to achieve Australia's highest possible safety rating – 5-star ANCAP – thanks to an array of active and passive safety features. So the only thing you need do is sit back and enjoy the ride.

The Accent also boasts a comprehensive range of active safety technologies that are constantly working behind the scenes, ready to spring into action and assist you during a difficult driving situation.

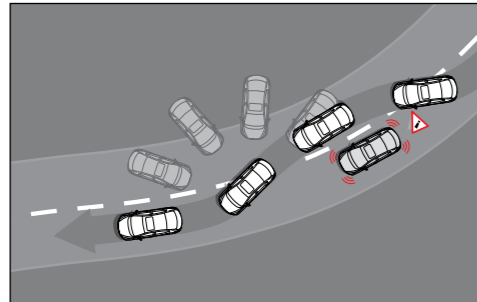


**Electronic Stability Control (ESC) with Traction Control System (TCS):** Senses a loss of wheel grip (such as when skidding) and then applies individual wheel braking, together with engine and transmission adjustments, to help you get the vehicle back on its intended course.

**Vehicle Stability Management (VSM) system:** Helps maintain control of the vehicle by applying steering assistance, to help guide you to the correct steering position in case of a skid, to help you regain control.



ESC incorporating TCS



VSM (Vehicle Stability Management)



6 airbags  
Overseas model interior shown

# Driven by fun.

The Accent now comes with a more powerful 1.6L GDI Gamma engine, replacing the 1.4L MPi Kappa engine. Both the Accent hatch and sedan are available with your choice of a 6 speed manual or automatic transmission.

Specifically tuned for Australian driving conditions, the Accent delivers better handling, and thus a more responsive and exciting ride and driving experience all round.

Plus with 16" sports alloy wheels, it brings a distinctive sporty style to the streets.

Are you ready for some fun?

## 1.6L petrol engine

---

**103** Maximum power  
kW/6,300 rpm

**167** Maximum torque  
Nm/4,850 rpm



**Accent.**

# Sleek and stylish design.

With your choice of a hatch or sedan, the Accent has been designed to make an immediate, great first impression.

Its streamlined and aerodynamic profile is based on Hyundai's 'fluidic sculpture' design language. The sleek dynamic lines and deep grooves create a sporty futuristic look with a sense of constant motion.

Strongly defined wheels, a distinctive hexagonal grille and aggressive headlamps give the Accent an eye-catching and commanding road presence.



**Top:** Rear tailights  
**Bottom:** Headlights



**Top:** Side mirrors with LED side repeater  
**Bottom:** Front grille



**Accent.**



# Smart and feature-packed interior.

The striking good looks and energetic styling that make the Accent such a headturner from the outside, continue inside with a modern and ergonomic interior that's packed with features and comforts.

The symmetrical Y-shaped upper dash is drawn with sweeping lines that flow downward toward the centre stack and shift lever, creating a focus for the intuitive 5" touchscreen audio system that provides radio and MP3 capability, 4 speakers and Apple CarPlay™<sup>1</sup> compatibility.

You'll also have all the connectivity you want with iPod®, USB and AUX inputs whilst Bluetooth® connectivity<sup>2</sup> allows hands-free calling and audio streaming.

Every control and button has been positioned for easy use and navigation, so you can focus on driving but still get the most fun out of every trip.



**Top:** Sunglass compartment  
**Bottom:** 5" touchscreen

**Top:** Steering wheel mounted controls  
**Bottom:** iPod® and AUX/USB support

1. Apple CarPlay™ functionality requires software update. Apple CarPlay™ requires iPhone 5® or subsequent model (lightning cable) in order to operate. Apple®, iPhone® and iPod® are registered trademarks of Apple Inc., registered in the U.S. and other countries. 2. Bluetooth® is a registered trademark of Bluetooth SIG, Inc. Please check your Bluetooth® device's capabilities to ensure compatibility.



Accent.

# Style, your way.

## Engine and transmission

1.6 litre petrol (manual & auto)

## Accent Sport

### Key specifications:

#### Safety

- Electronic stability control (ESC) including: Anti-lock Braking System (ABS), Brake Assist System (BAS), Electronic Brakeforce Distribution (EBD), Traction Control System (TCS) and Vehicle Stability Management (VSM)
- 6 airbags
- Rear door child safety locks
- ISOFIX child restraint anchors
- Central locking

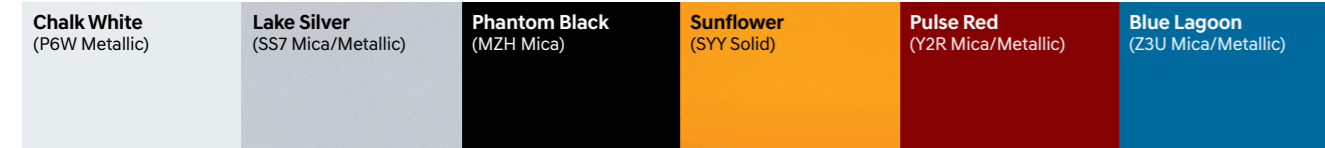
#### Interior and technology

- Apple CarPlay™ compatibility<sup>1</sup>
- Bluetooth® phone connectivity<sup>2</sup>
- 5" touchscreen display
- AUX/USB audio input with iPod® compatibility
- Cruise control with steering wheel mounted controls
- Premium steering wheel and gear knob
- Power windows
- Retractable sunglasses compartment

#### Exterior and technology

- 16" alloy wheels
- Front chrome grille inserts
- Side mirrors with integrated indicators
- Rear wiper (hatchback only)
- Heated rear windshield

## Accent Exterior Colours<sup>3</sup>

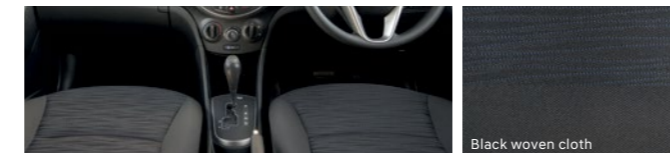


Hatch



Sedan

## Accent Interior



Black woven cloth



Accent.

1. Apple CarPlay™ functionality requires software update. Apple CarPlay™ requires iPhone 5® or subsequent model (lightning cable) in order to operate. Apple®, iPhone® and iPod® are registered trademarks of Apple Inc., registered in the U.S. and other countries. 2. Bluetooth® is a registered trademark of Bluetooth SIG, Inc. Please check your Bluetooth® device's capabilities to ensure compatibility. 3. Colours shown are indicative only and may vary due to the printing process. Premium paint are an additional cost.



# Hyundai Genuine Accessories.

Your Accent isn't just a car. It's an extension of you. So make it as unique as you are, with Hyundai Genuine Accessories<sup>1</sup>.

Genuine Accessories	Hatch	Sedan
<b>Technology</b>		
Auxiliary cable <sup>2</sup>	•	•
iPad <sup>®</sup> holder <sup>3</sup>	•	•
<b>Interior</b>		
Tailored carpet floor mats (set of 4)	•	•
Dash mat	•	•
Rubber cargo liner	•	•
Fabric rear bumper protector	•	•
Portable cooler (12 volt, 15 litre) <sup>4</sup>	•	•
Cargo organiser	•	•
<b>Exterior</b>		
Headlight protectors (set of 2)	•	•
Bonnet protector	•	•
Tinted stylevisors (set of 4)	•	•
Front mudflaps (set of 2) <sup>5</sup>	•	•
Rear mudflaps (set of 2) <sup>5</sup>	•	•
Towbar, towball & trailer wiring harness <sup>6</sup>	•	-
<b>Styling</b>		
16" alloy wheels (sold separately, tyres not incl.)	•	•
Interior lighting	•	•
<b>Roof Racks and Lifestyle</b>		
Whispbar™ quiet roof racks <sup>7</sup>	•	•
Roof mounted bike carrier <sup>8</sup>	•	•
Thule® bike rack (wheel on) <sup>8</sup>	•	•
Roof mounted kayak holder <sup>8</sup>	•	•
Ski & snowboard carrier <sup>8</sup>	•	•
Surfboard carrier <sup>8</sup>	•	•
<b>Styling</b>		
First aid kit (4 pockets)	•	•
Rear park assist <sup>9</sup>	•	•



Rubber cargo liner



Towbar, towball & trailer wiring harness<sup>6</sup>



Tailored carpet floor mats (set of 4)



Tinted stylevisors (set of 4)



Front & rear mudflaps (set of 2)<sup>5</sup>



Headlight protectors (set of 2)



Rear park assist<sup>9</sup>



Surfboard carrier<sup>8</sup>



Roof mounted bike carrier<sup>8</sup>



Whispbar™ quiet roof racks<sup>7</sup>



Ski & snowboard carrier<sup>8</sup>

1. All Hyundai Genuine Accessories are backed by a 5 year warranty if purchased at the time of a new Hyundai vehicle and fitted by an authorised Hyundai Dealer. All Hyundai Genuine Accessories are subject to warranty conditions. See your nearest Hyundai Dealer or visit our website at [www.hyundai.com.au](http://www.hyundai.com.au) for full warranty terms and usage recommendations. 2. Auxiliary cable not suitable for Apple® devices. 3. iPad® is a registered trademark of Apple Inc. The iPad® holder has been designed to hold iPad® 1, 2, 3, 4 & iPad Air securely. To ensure occupants are protected in the event of a collision, the screen protector must be fitted to the iPad® when in use. iPad® not included. 4. Only suitable for use with retractable seatbelt. 5. Mudflaps cannot be fitted in conjunction with a full bodyskirt or rear skirt. 6. Maximum ball download 50kg. Towing capacity = 900kg braked, 850kg Auto & 900kg Manual unbraked. Towbar capacity subject to regulatory requirements, towbar design, vehicle design and towing equipment limitations. 7. Load capacity = 75kg distributed evenly over 2 bars. Roof racks should be removed when not in use. 8. Requires fitment of Whispbar™ quiet roof racks at additional cost. Bike, snowboard and surfboard not included. 9. Park assist is designed as driver assist aid only and should not be used as a substitute for skilled driving and safe parking practices (sensors do not pick up objects directly in front of the vehicle). While the park assist sensors monitor objects on approach, there may be occasions where blind spots affect the sensitivity of the sensors and as a result the area into which the vehicle is heading must be visually monitored by the driver at all times while parking.

# CarPlan. The smarter way to finance your new Hyundai.

Life's full of surprises and while you won't always know what's around the next corner, with Hyundai CarPlan™ you'll always have the right car for the journey there. It's a smart and flexible way to have the vehicle that's perfect for you, even as your lifestyle changes.

Hyundai CarPlan™ has been developed by Hyundai Finance™ to provide flexibility at the end of your finance contract, letting you enjoy the new Hyundai experience again and again. At the end of your finance contract you can pay any amounts owing on your finance contract to keep your Hyundai or trade it in at your preferred Hyundai dealer to step into the latest Hyundai model and continue your journey with us. The choice is yours.

## In a nutshell.



1. Choose your Hyundai model

Visit a participating Hyundai Dealer and select an eligible new or demonstrator Hyundai<sup>1</sup> that best suits your lifestyle.



2. Choose an eligible finance solution

You can choose your desired finance contract term of 36 or 48 months and the kilometres you intend to travel up to a maximum of 25,000 per year.

Our fixed rate loans are available with or without a deposit – whichever suits you.<sup>2</sup>



3. We'll then tell you:

- How much your regular payments will be over the finance contract term.<sup>3</sup>
- The Guaranteed Trade in Value for your new Hyundai. The Guaranteed Trade in Value is the value of your new Hyundai at the end of your finance contract as determined by Hyundai Finance™ subject to Fair Wear and Tear conditions and agreed kilometres not being exceeded.
- We'll also give you a copy of the Fair Wear & Tear Guidelines, setting out the condition requirements you'll need to maintain over the finance contract term to avoid any adjustments to your Guaranteed Trade in Value under the GTV terms.<sup>4</sup>

## It's all about choice.

We know that everyone's lifestyle and situation is different, so we give you two different options to choose from when your contract comes to an end: keep your Hyundai, or trade it for a brand new one<sup>1</sup> knowing your Guaranteed Trade in Value.



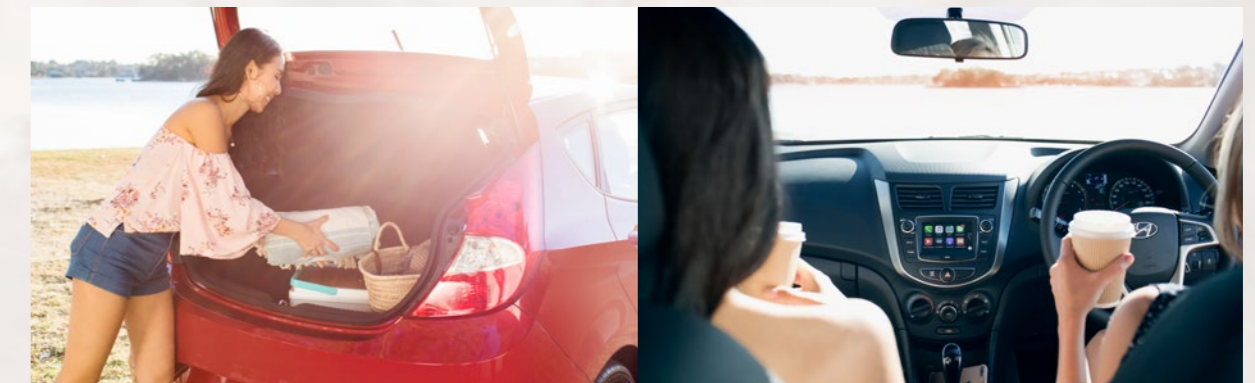
1.

Keep your Hyundai by paying any amounts owing on your finance contract or applying through Hyundai Finance™ to refinance the loan residual balance.



2.

Trade in your Hyundai at your preferred Hyundai dealer and apply for another Hyundai CarPlan™ giving you the chance to step into the latest Hyundai model and continue your journey with us.



1. The feature is available on all new and demonstrator Hyundai vehicles on selected models only. Please verify with your dealership which vehicles are eligible for the programme.  
 2. Please read the full terms and conditions. Please consider whether these products and services are appropriate for your circumstances. Before acting on any of the information in this brochure, please seek independent tax advice. Full terms and conditions are available upon application. Available only to approved applicants of Hyundai Finance™. Subject to credit assessment and for consumer applications, responsible lending criteria. Fees and charges apply. Fleet, government, rental buyers, hire car and chauffeur companies are excluded. Available at participating Hyundai dealers.  
 3. Your total interest charged may be higher if you choose the Guaranteed Trade in Value feature for your loan, compared to a loan without the feature.  
 4. The Guaranteed Trade in Value is not a representation by Hyundai Finance™ as to the likely market value of your vehicle as at the end of your finance contract. If the Guaranteed Trade in Value applies and the vehicle is not returned in an acceptable condition, as defined in the terms and conditions or exceeds kilometre restrictions, the Guaranteed Trade in Value will be reduced and you'll be required to pay the difference.

# How does Hyundai's new CarPlan differ from typical Hyundai financing?



## Greater confidence

Hyundai CarPlan™ will ensure the amount you receive on trade in satisfies the final repayment, even where the value of the trade in is less than the final repayment amount<sup>1</sup>. If the trade in valuation is higher than the Hyundai CarPlan™ value, the difference can be used as equity towards your new or demonstrator Hyundai when you purchase it<sup>2</sup>.



## A personally tailored solution

You may decide on the term for your finance contract, the deposit you would like to pay (if any) and the kilometres you intend to travel.



## Greater flexibility

At the end of the finance contract term, you'll have the choice to keep your Hyundai, or trade it for a brand new one<sup>2</sup>.



## More options

You have the option to include things like Pre-Paid Service Plan<sup>3</sup>, insurance and accessory costs as part of your fixed-rate loan agreement.

# Maintaining your vehicle.

To ensure you enjoy the full benefits of the Hyundai CarPlan™, your Hyundai must be in an acceptable condition when you are trading it in for your new Hyundai<sup>2</sup> and must not exceed the kilometre limit you have selected. Of course, we also understand that some reasonable wear and tear is to be expected, but it needs to remain within the provisions of your Hyundai CarPlan™ contract and Fair Wear & Tear Guidelines.

Where the vehicle is not in acceptable condition or where you have exceeded your kilometre limit, the Guaranteed Trade in Value of your vehicle will be reduced.

# Is Hyundai's new CarPlan right for you?

Hyundai CarPlan™ is just one of many options available from Hyundai Finance™, so there may be another product that suits your individual needs better. Have a chat to your participating Hyundai Dealer about what's right for you.



1. The Guaranteed Trade in Value is not a representation by Hyundai Finance™ as to the likely market value of your vehicle as at the end of your finance contract. If the Guaranteed Trade in Value applies and the vehicle is not returned in an acceptable condition, as defined in the terms and conditions or exceeds kilometre restrictions, the Guaranteed Trade in Value will be reduced and you'll be required to pay the difference.

2. The feature is available on all new and demonstrator Hyundai vehicles on selected models only. Please verify with your dealership which vehicles are eligible for the programme.

3. Pre-Paid Service Plan: for scheduled services only, including parts. Does not include fair wear and tear items. For full terms and conditions visit [hyundai.com.au/pre-paid](http://hyundai.com.au/pre-paid)

The Hyundai CarPlan from Hyundai Finance is a feature which ensures you receive the Guaranteed Trade in Value (determined by Hyundai Finance) at the end of the term of your contract when you trade it in at a participating Hyundai Dealer in accordance with the terms and conditions.

To exercise the feature your vehicle must be inspected and assessed by a participating Hyundai dealer at the end of the term of your finance contract. Adjustments to the value may apply. You receive the Guaranteed Trade in Value for the car if you exercise the feature at the end of the term and purchase a new or demonstrator Hyundai at the same time. The amount you receive on trade in will satisfy the final repayment, even where the trade in is less than the repayment amount.



# Relax, we'll take it from here.

There's a reason why our iCare program has won awards<sup>1</sup>. We built iCare around one simple, innovative idea. That comprehensive on-the-road care should come standard with every car – not just as an “optional extra”.

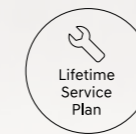
Our five-year, unlimited kilometre warranty<sup>2</sup> means you've got the freedom to go ahead and drive without having to keep an eye on the odometer.

Imagine knowing the maximum price of your next scheduled service, before pulling into the service centre. That's the advantage of our Lifetime Service Plan<sup>3</sup> – a clever Hyundai initiative that gives you transparency and peace of mind for the life of your car. No hidden fees and surprises.

And since every new Hyundai is built to the highest standards, we've got the confidence to offer comprehensive customer service without exception – or as we like to say, amazing as standard. And that includes 24/7 Roadside Support<sup>4</sup> for ten years when you service with us.



iCare



1. 2015 Canstar Blue Innovation Excellence Awards (5 Stars). 2. **5 year/unlimited km warranty:** Applies to new passenger vehicles used for private/domestic purposes. Excludes vehicles used at any time for “commercial application” as defined in the vehicle warranty policy, for which a 5 year/130,000km (whichever occurs first) warranty applies. Refer to full warranty terms & conditions for details and exclusions. 3. **Lifetime Service Plan:** For the benefit of Hyundai owners, Hyundai provides online quotes which specify the maximum price applicable for a vehicle's next scheduled maintenance service at a participating authorised Hyundai Dealer and using genuine Hyundai parts (where required). Online quotes are available at [hyundai.com.au](http://hyundai.com.au), apply for a stated effective period only and may change after that effective period without notice. Standard scheduled maintenance services are of limited scope. The benefit of online quotes is available for all Hyundai's, for their lifetime. 4. **Roadside Support Plan:** Complimentary 12 months Roadside Support when you purchase a new Hyundai passenger vehicle (excluding rental buyers). Further Roadside Support extensions are available, each for 12 months from the date of a scheduled maintenance service at a participating authorised Hyundai Dealer (unless vehicle is more than 108 months (9 years) from the original new car sale date, in which case entitlement to Roadside Support ends when vehicle reaches 120 months (10 years) from original new car sale date).



## Big help, for little Aussies.

Every time a new car is sold at one of our Dealerships, both Hyundai and the Dealer will donate part of the sale price to Hyundai Help for Kids.™

Hyundai Help for Kids™ offers funding to child-focused organisations and charities working to improve the lives of children all over Australia – from supporting community initiatives, to providing much-needed medical equipment.

So when you buy a Hyundai, you're buying more than just a car. Together with Hyundai Help for Kids,™ you're empowering thousands of young Australians and giving them a better future.



Hyundai Help for Kids™ is a registered trademark of Hyundai Motor Company.

**Accent.**

# Australia, in our DNA.

We're one of the biggest car manufacturers in the world – and one of the fastest growing global car brands.

We're also the only car company in the world producing its own steel, because we know the best steel makes for the strongest cars.

That's why we source the majority of our high quality iron ore from right here, in Australia's backyard. So now, when you buy a new Hyundai, you know you're driving a car that's directly connected to home.



**Accent.**

Hyundai Accent	
Engine	1.6 GDi
Engine family	Gamma
Configuration	Transverse front mounted driving front wheels
Cylinder capacity	1.6 litres (1,591 cc)
Number of cylinders	4 in-line
Valve system	16 Valve, Double Overhead Cam (DOHC), Dual Continuously Variable Valve Timing (D-CVVT)
Intake system	2-step variable induction system
Maximum power	103 kW @ 6,300 RPM
Maximum torque	167 Nm @ 4,850 RPM
Fuel system	GDI (Gasoline Direct Injection)
Fuel type	91 RON (ULP), E10 compatible
Emissions standard	Euro 5
Bore x stroke	77.0 mm x 85.44 mm
Compression ratio	11.0:1

Transmission		
1.6 GDi		
Manual	6 speed manual	
Automatic	6 speed automatic with sequential manual mode	
Gear ratio	Manual	DCT
1st	3.615	4.400
2nd	1.955	2.726
3rd	1.286	1.834
4th	1.036	1.392
5th	0.839	1.000
6th	0.703	0.774
Reverse	3.700	3.440
Final	3.833	3.065

Engine/transmission availability	1.6 GDi	
Hatchback & sedan	Manual	Automatic
Sport	•	•

Steering	
1.6 GDi	
Type	Column mounted Motor Driven Power Steering (C-MDPS), rack & pinion
Min. turning circle diameter between kerbs / walls	10.4 m
Number of steering wheel turns lock to lock	2.9
Suspension	
1.6 GDi	
Front	MacPherson strut
Rear	Torsion beam axle

Hyundai Accent	
Brakes	1.6 GDi
System	Dual-diagonal, split circuit, power assisted with Electronic Brakeforce Distribution (EBD) and Brake Assist System (BAS)
Front brake type	Ventilated disc
Front disc dimensions	256 mm x 22 mm
Rear brake type	Solid disc
Rear disc dimensions	262mm x 10 mm

Weight		
1.6 GDi		
Hatchback & sedan	Manual	Automatic
Kerb weight - lightest	1070 kg	1090 kg
Kerb weight - heaviest	1150 kg	1170 kg
Gross Vehicle Mass	1610 kg	1610 kg

Towing capacity		
1.6 GDi		
Hatchback only	Manual	Automatic
Braked	900 kg	900 kg
Unbraked	450 kg	450 kg
Maximum towball weight	50 kg	50 kg

Fuel consumption*		
1.6 GDi		
	Manual	Automatic
Combined (L/100km)	6.3	6.6
Urban (L/100km)	8.2	9.2
Extra Urban (L/100km)	5.1	5.1
CO2 - combined (g/km)	146	154
Fuel tank volume	43 L	

\*Source: Australian Design Rule 81/02 static laboratory combined average city and highway cycle test. Real-world fuel consumption will vary depending on a combination of driving habits, the condition of the vehicle, and other factors such as road, traffic and weather conditions. ADR 81/02 test results are meant for comparison purposes only.

Dimensions	Hatchback	Sedan
Exterior		
Length	4115 mm	4370 mm
Width	1700 mm	
Height	1450 mm	
Wheelbase	2570 mm	
Wheel track - front / rear	1489 mm / 1493 mm	
Minimum ground clearance (based on kerb weight)	140 mm	
Interior		
Head room - front / rear	1014 / 959 mm	1014 / 946 mm
Leg room - front / rear	1062 / 846 mm	
Shoulder room - front / rear	1364 / 1356 mm	
Hip room - front / rear	1304 / 1198 mm	
Cargo area - VDA	370 L	465 L

Hyundai Accent	
Wheels & tyres	Sport
Wheel type	Alloy
Wheel dimensions	16 x 6.0J +52
Tyre dimensions	195/50 R16 84H
Spare wheel type	Full size alloy

Driving convenience	
Sport	
Cruise control	•
One touch turn signal - 3 flashes	•
Rear wiper	• (Hatchback only)
Steering wheel mounted controls - audio & cruise control	•
Tilt adjustable steering column	•

Active safety	
Sport	
Electronic Stability Control (ESC) including:	
Anti-lock Braking System (ABS)	•
Brake Assist System (BAS)	•
Electronic Brakeforce Distribution (EBD)	•
Traction Control System (TCS)	•
Vehicle Stability Management (VSM)	•

Passive safety	
Sport	
Airbags	
Front airbags - driver & front passenger	•
Side (thorax) airbags - driver & front passenger	•
Side curtain airbags - 1st & 2nd rows	•

Doors	
Impact sensing auto door unlock	•
Rear door child safety locks	•
Seatbelts	
Pretensioners, load limiters & height adjustable upper mounts on front seat belts	•
Seat belt reminder - front & rear seatbelts	•

Seating	
Height adjustable front head restraints	•
Height adjustable rear head restraints	•
ISOFIX child restraint anchors (rear outboard seats)	•
Top tether child restraint anchors (rear) - 3 anchors	•

Security	
Sport	
Security system	
Active lock / unlock operation	•
Central locking	•
Engine immobiliser	•
Remotes	
Keyless entry remote - 2x	•

Hyundai Accent	
Multimedia system	Sport
Functions	
Apple CarPlay™ compatibility¹	•
Bluetooth® phone connectivity²	•
5" touchscreen display	•

Speakers	
Audio system - 4 speakers	•
Audio / media sources	
AM / FM radio	•
AUX / USB audio input with iPod® compatibility	•
Bluetooth® audio streaming²	•

Occupant comfort & convenience	
Sport	
Upholstery/trim	
Premium steering wheel & gear knob	•

Front seats	
Driver's seat - height adjustable	•
Front centre console storage cubby - power outlet - 1 x 12V outlet	•
Grip handles - 1x (passenger)	•

Rear seats	
Grip handles - 2x	•

Windows/shades	
Power windows - front & rear	•
One touch window up & down function with anti-pinching safety feature - driver's window	•

Vision & sight	
Sport	
Exterior mirrors	
Power adjustable	•

Instrument cluster/driving displays	
Instrument cluster - with trip computer	•

Ventilation & heating	
Sport	

Air conditioning	
Manual controls	•
Cabin air filter	•

Other features	
Heated rear windshield	•

Exterior styling	
Sport	
Front	
Front grille inserts - chrome	•

Interior styling	
Sport	

Materials	
Cloth door trim inserts	•

**Key:**  
• = Feature is available on trim    - = Feature is not available on trim

**Notes:**  
1. **Apple CarPlay™** functionality requires software update. Apple CarPlay™ requires iPhone 5® or subsequent model (lightning cable) in order to operate. Apple®, iPhone® and iPod® are registered trademarks of Apple Inc., registered in the U.S. and other countries. 2. **Bluetooth®** is a registered trademark of Bluetooth SIG, Inc. Please check your Bluetooth® device's capabilities to ensure compatibility.

**Accent.**

Hyundai Accent	
<b>Lighting</b>	<b>Sport</b>
<b>Exterior lighting - rear</b>	
High Mount Stop Light (HMSL)	•
<b>Exterior lighting - others</b>	
Side repeaters - LED integrated into side mirrors	•
<b>Interior lighting - front</b>	
Front room lights and map lights	•
<b>Interior lighting - rear</b>	
Centre room light	•
<b>Interior lighting - others</b>	
Cargo area light	•
Interior light fade-out delay	•
<b>Storage solutions</b>	<b>Sport</b>
<b>Front seats</b>	
Cup holders - centre console	•
Front passenger seat back pocket	•
Glovebox compartment	•
Retractable sunglasses compartment	•
Ticket holder - sunvisor (driver)	•
<b>Rear seats</b>	
Coat hooks - 1x	•
Rear seating split folding - 60:40	•
<b>Boot/Luggage area</b>	
Bag hooks - 1x	• (Hatchback only)
<b>Others</b>	
Doors - map pockets and bottle bulges (front and rear)	•


**Key:**  
• = Feature is available on trim    - = Feature is not available on trim



**Accent.**



 Like us at [facebook.com/hyundaiaustralia](https://facebook.com/hyundaiaustralia)

 Follow us at [twitter.com/hyundaiaus](https://twitter.com/hyundaiaus)

**Hyundai Motor Company Australia**

394 Lane Cove Road, Macquarie Park, NSW Australia 2113

[www.hyundai.com.au](http://www.hyundai.com.au)

Hyundai Motor Company (HMC) and the Hyundai Motor Company Australia (HMCA) each reserve the right to alter vehicle specifications and equipment levels without notice. Some equipment featured on the cars in this brochure may not be available in Australia or may be optional. To the extent permitted by law, neither HMC nor HMCA shall be liable to any person as a result of reliance on the content of this brochure. Please consult your Hyundai Dealer for the latest specifications, equipment levels, options, prices, colours and vehicle availability. Metallic and mica paint are optional extras. Note: information in this brochure is current as at 15/08/17. Part No. AD0318B