

# MAZDA CX-8

ZOOM-ZOOM



# CONTENTS

---

03 – Introduction

04 – Exterior

05 – Interior

07 – Technology

08 – Performance

09 – Space

10 – Quality

11 – Safety

12 – Colours

13 – Sport

14 – Touring

15 – Touring SP

16 – GT

17 – Asaki

18 – Asaki LE

19 – Specifications

29 – Confidence

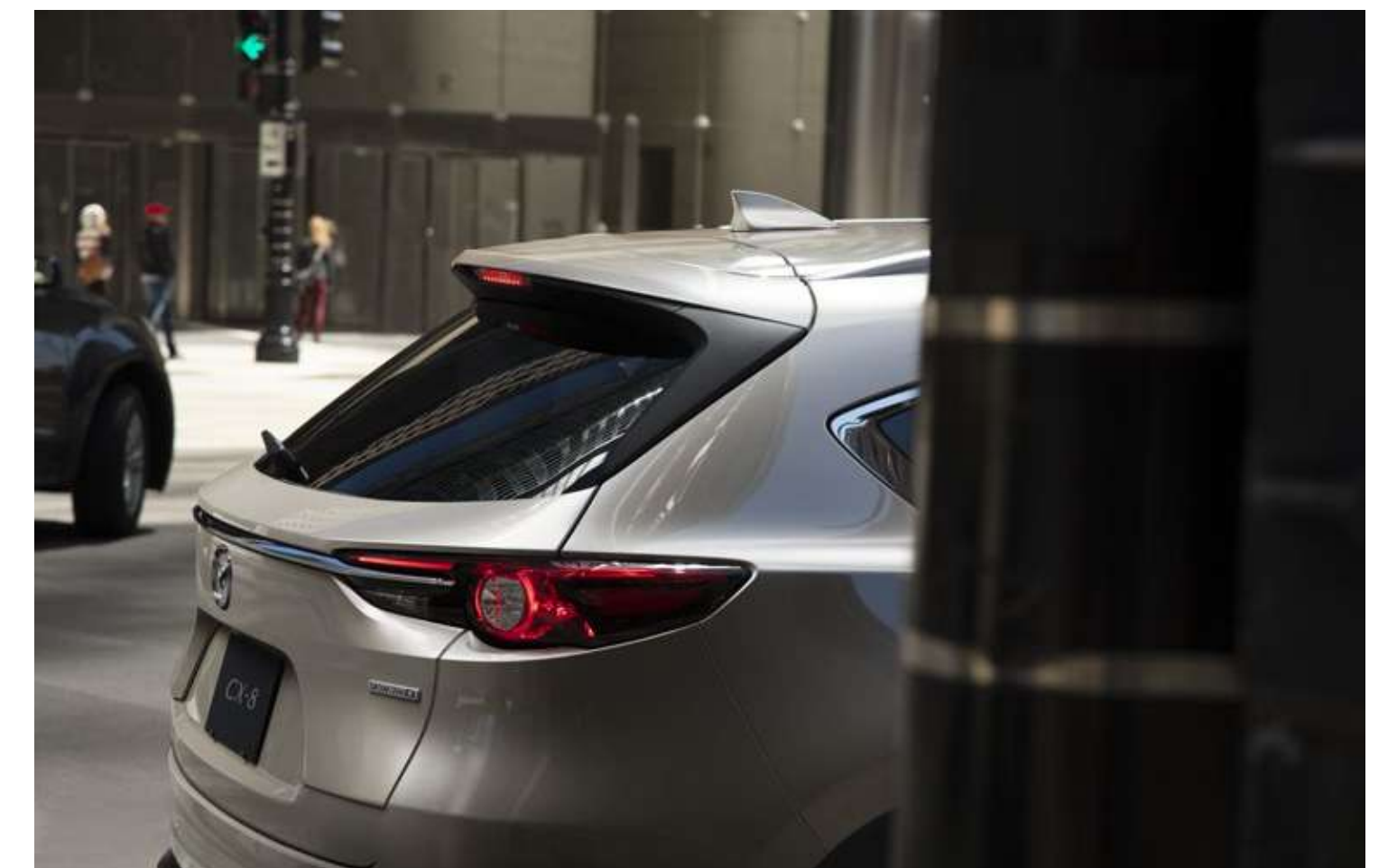
30 – Contact





## DRIVE THE FUTURE

Mazda CX-8, available in both petrol and diesel, brings a level of sleek design and exciting performance that you wouldn't expect in a three-row SUV. Featuring all the luxury and technology Mazda SUVs have become known for, and the latest in advanced safety technology. Mazda CX-8 is perfect for growing families.



## THE STREAMLINED THREE-ROW SUV

Mazda's stunning Kodo Design language is at the heart of every vehicle. Mazda CX-8 is the latest example, offering the spacious versatility of a large SUV but with smaller dimensions that never compromise on interior space or cabin comfort.

The image shows the interior of a Mazda car, viewed from the driver's perspective. The steering wheel is prominent in the foreground, featuring the Mazda logo. The dashboard and center console are visible, with a digital display on the center console showing '22.8'. The car is parked in a city, with tall buildings and a person in a suit visible through the window. The sun is low in the sky, creating a warm, golden glow. The text 'LUXURY FOR EVERY PASSENGER' is overlaid on the left side of the image.

## LUXURY FOR EVERY PASSENGER

You'll discover quality finishes and luxurious touches at every turn. The front row is especially taken care of with a perfectly laid-out cabin that's alive with exceptional design.



## CRAFTED AROUND YOU

Inside the cabin, sophistication and refined design can be found in all directions. From the nappa leather to the quality instrument panel, Mazda CX-8 has been crafted and finished to exacting specifications.



## STAY WELL CONNECTED

Mazda CX-8 brings the latest connectivity and infotainment to everyone on board via the new 10.25-inch widescreen display. The advanced Mazda Connect System comes with Apple CarPlay® and Android™ Auto§, so you can bring your world along. The front row now also has access to a wireless charger‡ to charge devices in GT grade and above.

§ Please check the compatibility of your Bluetooth® device (particularly your mobile phone) with the specific Mazda vehicle you intend to purchase as not all devices operate correctly. Visit [www.mazda.com.au/Bluetooth](http://www.mazda.com.au/Bluetooth) or consult your Mazda Dealer for further information. Apple Car Play® is a trademark of Apple Inc., registered in the U.S. and other countries.

‡ Wireless charging compatible with phones featuring Qi technology or adapter.



**THRILLING PERFORMANCE.  
IMPRESSIVE EFFICIENCY.**

Mazda CX-8 is powered by a choice of Skyactiv-G 2.5L petrol or Skyactiv-D 2.2L diesel engine, offering great responsiveness and powerful acceleration. With an SUV this size, efficiency is important, and both engines deliver with impressive fuel economy figures.





## SPACE TO GROW INTO

Mazda CX-8 handles all your storage needs with ease. If you don't need extra seats, the third row folds down to provide a huge 775L<sup>~</sup> of cargo space. Gaining access is easy with a hands-free power tailgate, standard on the GT model and above, that is simple to operate.

~775L cargo space measured with third-row seats folded and up to roof (including underfloor storage).



## SURROUND YOURSELF WITH QUALITY

Luxurious materials maintain the feeling of considered design throughout the cabin, from the seats to the door trims and centre dashboard. Beautiful to touch and to admire, these trims create a stylish, fresh ambience that speaks to Mazda CX-8's modern styling.



Black cloth  
(Sport)



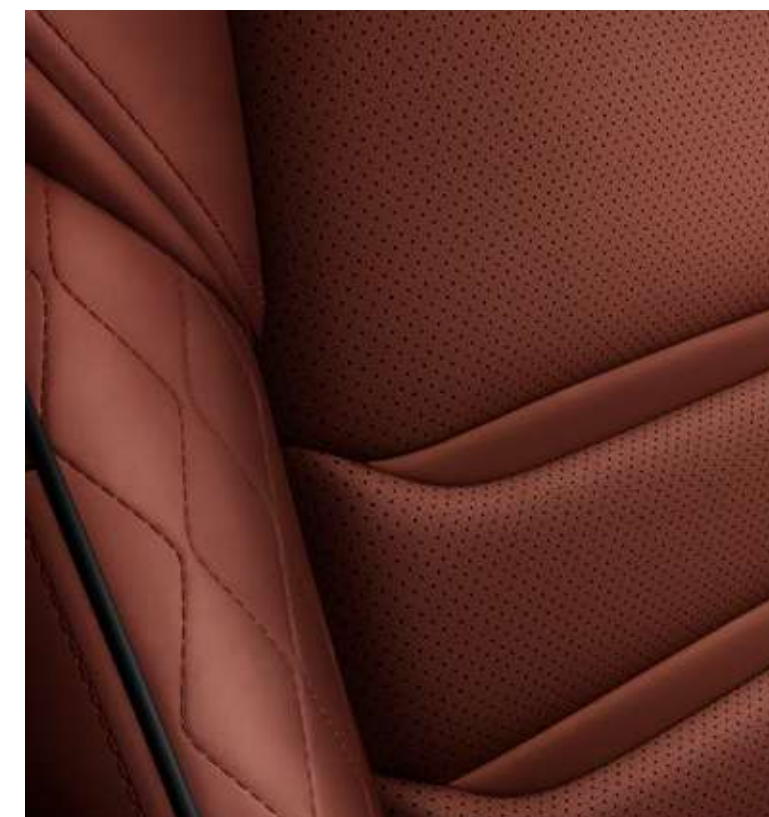
Black leather<sup>#</sup>  
(GT and Touring)



Black Maztex/Black Grand  
Luxe<sup>®</sup> Synthetic Suede<sup>^</sup>  
(Touring SP)



Burgundy leather<sup>#</sup>  
(GT)



Chroma Brown nappa leather<sup>#</sup>  
(Asaki and Asaki LE)



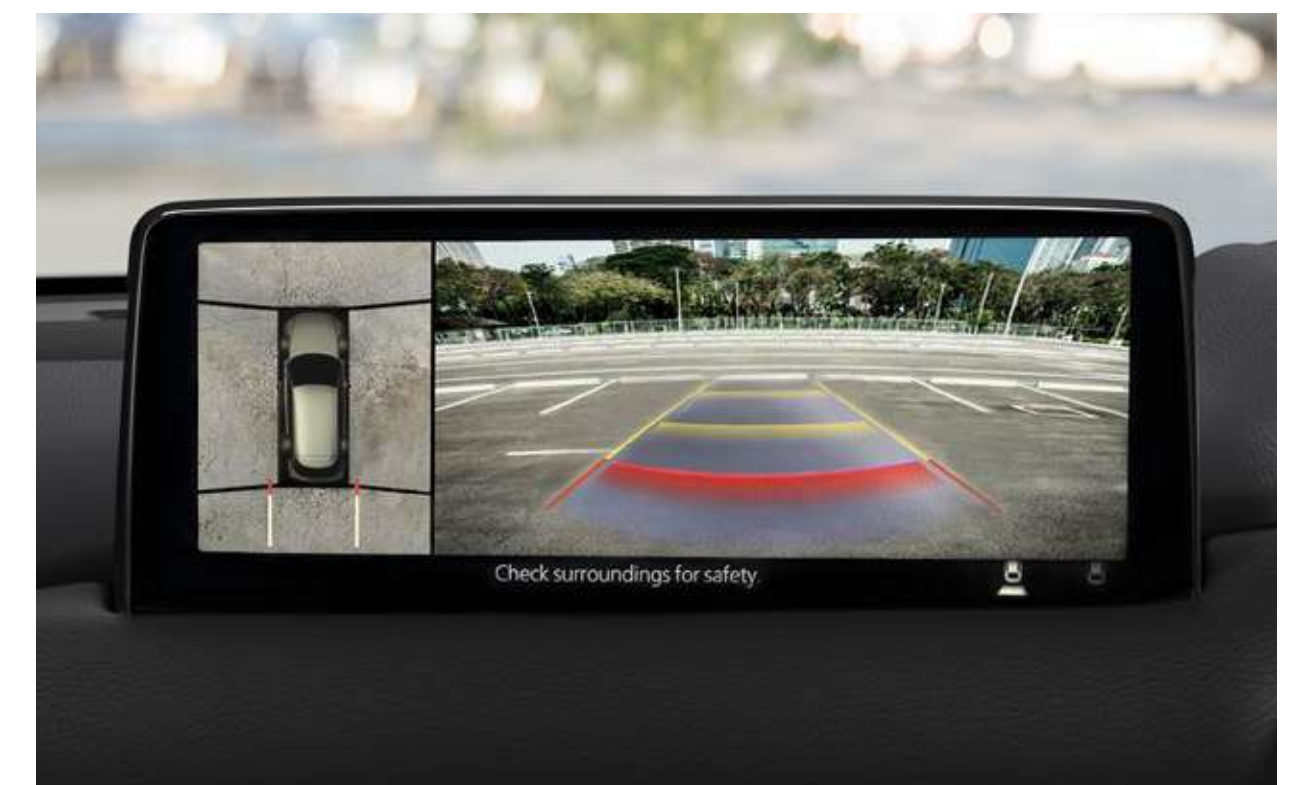
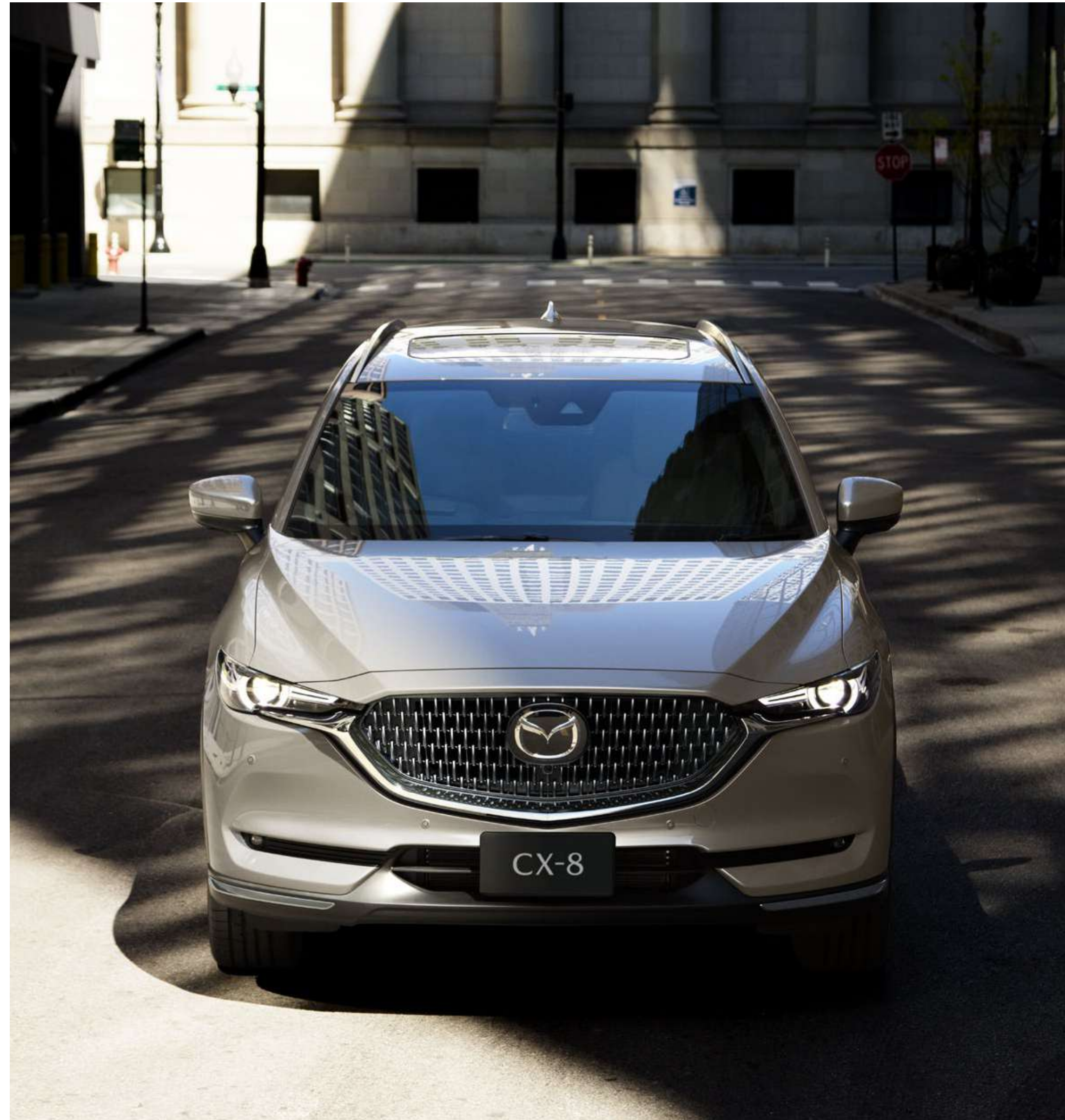
Pure White nappa leather<sup>#</sup>  
(Asaki LE)

<sup>#</sup> Leather interior includes some Maztex material on selected high-impact surfaces.

<sup>^</sup>Grand Luxe<sup>®</sup> is a registered trademark of Seiren Co., Ltd.

## KEEP THE FUTURE GENERATION PROTECTED

The safety of your family is always a priority. Mazda CX-8 features every safety innovation Mazda has to offer. Innovations such as a 360° View Monitor and a suite of clever i-Activsense safety technologies† offer plenty of peace of mind.



† i-Activsense, other safety technologies and driver-assistance features do not replace the driver's judgement, and should not be used in place of skilled and safe driving practices. It is the driver's sole responsibility to monitor vehicle surroundings and conditions and comply with all applicable laws at all times.

## CHOOSE YOUR COLOUR



Snowflake White Pearl Mica ■



Platinum Quartz Metallic ■



Titanium Flash Mica ●



Soul Red Crystal Metallic ●^



Polymetal Grey Metallic ●■^



Machine Grey Metallic ●■^



Jet Black Mica ●■



Deep Crystal Blue Mica ●■

● Pure White nappa leather only available with Titanium Flash Mica, Soul Red Crystal Metallic, Polymetal Grey Metallic, Machine Grey Metallic, Jet Black Mica and Deep Crystal Blue Mica exterior colours.

■ Burgundy leather only available with Snowflake White Pearl Mica, Machine Grey Metallic, Jet Black Mica, Deep Crystal Blue Mica, Platinum Quartz Metallic and Polymetal Grey Metallic.

^ At extra cost.



## MAZDA CX-8 SPORT FEATURES – STANDARD ACROSS EVERY GRADE

- » 17 inch alloy wheels with 225/65 tyres
- » Headlamps (LED) with auto on/off function
- » Power mirrors (body coloured with heating and auto-folding function)
- » Wipers (front) 2-speed with rain sensing function
- » Active driving display
- » Air-conditioning (three-zone climate control) with independent rear control
- » Rear-view mirror with auto-dimming function
- » Rear seats with: Centre armrest
- » Seat trim: Black cloth
- » Leather wrapped: gear shift knob and steering wheel
- » 8-inch full colour touch screen display (MZD Connect)
- » Audio system with: AM/FM tuner, Bluetooth® capability<sup>§</sup>, Digital radio (DAB+) and 6 speakers
- » Apple CarPlay® and Android™ Auto<sup>§</sup>
- » Satellite navigation
- » Blind Spot Monitoring (BSM)<sup>†</sup>
- » High Beam Control (HBC)<sup>†</sup>
- » Intelligent Speed Assistance (ISA)<sup>†</sup>
- » Lane Departure Warning (LDW)<sup>†</sup>
- » Lane-keep Assist System (LAS)<sup>†</sup>
- » Mazda Radar Cruise Control (MRCC) with Stop & Go function<sup>†</sup>
- » Parking sensors (Rear)
- » Rear Cross Traffic Alert (RCTA)<sup>†</sup>
- » Reverse camera
- » Smart Brake Support (SBS)<sup>†</sup>
- » Smart City Brake Support [Forward/Reverse] (SCBSF/R) with night time pedestrian detection [Forward]<sup>†</sup>
- » Traffic Sign Recognition (TSR)<sup>†</sup>
- » Tyre Pressure Monitoring System (TPMS)<sup>†</sup>
- » Electric parking brake with Auto Hold

## POWERTRAIN

### SKYACTIV-G

- » 2.5 litre in-line 4 cylinder 16 valve DOHC S-VT petrol (Skyactiv-G) engine with i-stop
- » Drivetrain: FWD
- » Fuel consumption (combined): 8.1L/100km\*
- » Maximum power: 140kW @ 6,000rpm
- » Maximum torque: 252Nm @ 4,000rpm

- » Transmission: 6-speed auto (Skyactiv-Drive)

- » G-Vectoring Control Plus (GVC Plus)

### OR SKYACTIV-D

- » 2.2 litre in-line 4 cylinder 16 valve DOHC intercooled twin-turbo diesel (Skyactiv-D) engine with i-stop
- » Drivetrain: i-Activ AWD

- » Fuel consumption (combined): 6.0L/100km\*

- » Maximum power: 140kW @ 4,500rpm

- » Maximum torque: 450Nm @ 2,000rpm

- » Transmission: 6-speed auto (Skyactiv-Drive)

- » G-Vectoring Control Plus (GVC Plus)

- » Off-Road Traction Assist

<sup>§</sup> Please check the compatibility of your device (particularly your mobile phone) with the specific Mazda vehicle you intend to purchase as not all devices operate correctly. Visit [www.mazda.com.au/Bluetooth](http://www.mazda.com.au/Bluetooth) or consult your Mazda Dealer for further information. \* Combined fuel consumption figures are based on ADR 81/02 test results. They are useful in comparing the fuel consumption of different vehicles. They may not be the fuel consumption achieved in practice. This will depend on traffic, road conditions and how the vehicle is driven. † i-Activsense, other safety technologies and driver-assistance features do not replace the driver's judgement, and should not be used in place of skilled and safe driving practices. It is the driver's sole responsibility to monitor vehicle surroundings and conditions and comply with all applicable laws at all times.



## MAZDA CX-8 TOURING FEATURES – ADDITIONAL TO SPORT

- » LED fog lamps
- » Parking sensors (front)
- » Advanced keyless entry
- » Seat trim: Black leather<sup>#</sup>
- » Front seats with: 6-way power adjustment (passenger), 8-way power adjustment (driver) and heating function
- » Rear seats with: Centre armrest storage and USB charging ports (2nd row)
- » One touch walk-in switch
- » Paddle shift gear control

## POWERTRAIN

### SKYACTIV-G

- » 2.5 litre in-line 4 cylinder 16 valve DOHC S-VT petrol (Skyactiv-G) engine with i-stop
- » Drivetrain: FWD
- » Fuel consumption (combined): 8.1L/100km\*
- » Maximum power: 140kW @ 6,000rpm
- » Maximum torque: 252Nm @ 4,000rpm

- » Transmission: 6-speed auto (Skyactiv-Drive)
- » G-Vectoring Control Plus (GVC Plus)

### OR SKYACTIV-D

- » 2.2 litre in-line 4 cylinder 16 valve DOHC intercooled twin-turbo diesel (Skyactiv-D) engine with i-stop
- » Drivetrain: i-Activ AWD

- » Fuel consumption (combined): 6.0L/100km\*
- » Maximum power: 140kW @ 4,500rpm
- » Maximum torque: 450Nm @ 2,000rpm
- » Transmission: 6-speed auto (Skyactiv-Drive)
- » G-Vectoring Control Plus (GVC Plus)
- » Off-Road Traction Assist



### ONE TOUCH ACCESS

With the one touch walk-in switch gaining access to the third row is so simple even a child can do it.



### PARK WITH CONFIDENCE

Never be uncertain about parking again. The front parking sensors make getting into tricky spots easy.



### RIDE IN STYLE

The leather<sup>#</sup> seats in Mazda CX-8 are not only comfortable, they are crafted using quality materials and finished to perfection.

\* Combined fuel consumption figures are based on ADR 81/02 test results. They are useful in comparing the fuel consumption of different vehicles. They may not be the fuel consumption achieved in practice. This will depend on traffic, road conditions and how the vehicle is driven. # Leather interior includes some Maztex material on selected high-impact surfaces.



## MAZDA CX-8 TOURING SP FEATURES – ADDITIONAL TO TOURING

- » Front grille (Black)
- » Outer mirror (Black)
- » 19-inch alloy wheels (Black metallic) with 225/55 tyres
- » Decoration & side door trim panel (Black: Honeycomb pattern)
- » Red interior stitch
- » Seat trim: Black Maztex/Black Grand Luxe® Synthetic Suede^
- » Front seats with 2-position memory function (driver), 6-way power adjustment (passenger), 10-way power adjustment (driver) and heating function
- » Rear seats with: Heating function (2nd row outer)

## POWERTRAIN

### SKYACTIV-G

- » 2.5 litre in-line 4 cylinder 16 valve DOHC S-VT petrol (Skyactiv-G) engine with i-stop
- » Drivetrain: FWD
- » Fuel consumption (combined): 8.1L/100km\*
- » Maximum power: 140kW @ 6,000rpm
- » Maximum torque: 252Nm @ 4,000rpm

- » Transmission: 6-speed auto (Skyactiv-Drive)
- » G-Vectoring Control Plus (GVC Plus)

### OR SKYACTIV-D

- » 2.2 litre in-line 4 cylinder 16 valve DOHC intercooled twin-turbo diesel (Skyactiv-D) engine with i-stop
- » Drivetrain: i-Activ AWD

- » Fuel consumption (combined): 6.0L/100km\*
- » Maximum power: 140kW @ 4,500rpm
- » Maximum torque: 450Nm @ 2,000rpm
- » Transmission: 6-speed auto (Skyactiv-Drive)
- » G-Vectoring Control Plus (GVC Plus)
- » Off-Road Traction Assist



### FASHION FORWARD

Make an unforgettable first impression, every time, with the stylish black front grille.



### FORM MEETS FUNCTION

These striking 19-inch black metallic alloy wheels are equal parts sophistication, and performance.



### TRAVEL FIRST CLASS

Driver, front and 2nd row passengers can enjoy the feeling of luxury only heated seats can deliver.

\* Combined fuel consumption figures are based on ADR 81/02 test results. They are useful in comparing the fuel consumption of different vehicles. They may not be the fuel consumption achieved in practice. This will depend on traffic, road conditions and how the vehicle is driven. ^ Grand Luxe® is a registered trademark of Seiren Co., Ltd.



## MAZDA CX-8 GT FEATURES – ADDITIONAL TO TOURING SP

- » 19-inch alloy wheels (Bright) with 225/55 tyres
- » Gloss black front grille
- » Adaptive Front-lighting system (AFS)<sup>†</sup>
- » Power sliding and tilt-glass sunroof
- » Remote operated and hands free power tailgate (open/close)
- » LED signature with DRL
- » Decoration & side door trim panel (Metal wood)
- » Seat trim: Burgundy red or Black leather<sup>#</sup>
- » 10.25-inch widescreen display (Mazda Connect)
- » Wireless charger<sup>‡</sup>
- » Premium Bose® 273-watt amplifier and 10 speakers (including subwoofer)
- » USB charging ports (3rd row)
- » Rear door window sunshade
- » Side garnish (Bright)
- » Room/cargo lamps (LED)
- » Vanity mirror lamps (LED)

## POWERTRAIN

- » 2.2 litre in-line 4 cylinder 16 valve DOHC intercooled twin-turbo diesel (Skyactiv-D) engine with i-stop
- » Drivetrain: FWD or i-Activ AWD
- » Fuel consumption (combined): 5.9L/100km\* (FWD)
- » Fuel consumption (combined): 6.0L/100km\* (AWD)
- » Maximum power: 140kW @ 4,500rpm
- » Maximum torque: 450Nm @ 2,000rpm
- » Transmission: 6-speed auto (Skyactiv-Drive)
- » G-Vectoring Control Plus (GVC Plus)
- » Off-Road Traction Assist (only on AWD)



\*Combined fuel consumption figures are based on ADR 81/02 test results. They are useful in comparing the fuel consumption of different vehicles. They may not be the fuel consumption achieved in practice. This will depend on traffic, road conditions and how the vehicle is driven. † i-Activsense, other safety technologies and driver-assistance features do not replace the driver's judgement, and should not be used in place of skilled and safe driving practices. It is the driver's sole responsibility to monitor vehicle surroundings and conditions and comply with all applicable laws at all times. ‡Wireless charging compatible with phones featuring Qi technology or adapter.

### LET THE SKY IN

The easy to use power sunroof lets fresh air and light in so you can appreciate the stunning interior design. (Asaki grade shown).

### SOUNDS AMAZING

The superior quality Bose® speakers are placed strategically around the cabin to deliver crystal clear sound wherever you're sitting.

### QUICK AND CONVENIENT

The Remote operated and hands free power tailgate makes access to the rear cargo space easy. (Asaki grade shown).





## MAZDA CX-8 ASAKI FEATURES – ADDITIONAL TO GT

- » Unique 19-inch alloy wheels (Bright) with 225/55 tyres
- » Gun metallic front grille
- » Front bumper lower moulding (Bright)
- » Adaptive LED Headlamps (ALH)<sup>†</sup>
- » Large diameter tailpipe
- » Front seats with: ventilation function
- » Seat trim: Chroma brown nappa leather<sup>#</sup> with quilting
- » Decoration & side door trim panel (Silver: Honeycomb pattern)
- » Heated steering wheel
- » 7-inch TFT LCD multi-information meter display
- » 360° View Monitor<sup>†</sup>
- » Frameless rear-view mirror
- » Chrome plated power seat knob
- » Unique steering wheel stitch
- » Unique overhead console
- » Glove box illumination (LED)
- » Ambient lighting (LED)

## POWERTRAIN

- » 2.2 litre in-line 4 cylinder 16 valve DOHC intercooled twin-turbo diesel (Skyactiv-D) engine with i-stop
- » Drivetrain: FWD or i-Activ AWD
- » Fuel consumption (combined): 5.9L/100km\* (FWD)
- » Fuel consumption (combined): 6.0L/100km\* (AWD)
- » Maximum power: 140kW @ 4,500rpm
- » Maximum torque: 450Nm @ 2,000rpm
- » Transmission: 6-speed auto (Skyactiv-Drive)
- » G-Vectoring Control Plus (GVC Plus)
- » Off-Road Traction Assist (only on AWD)



\* Combined fuel consumption figures are based on ADR 81/02 test results. They are useful in comparing the fuel consumption of different vehicles. They may not be the fuel consumption achieved in practice. This will depend on traffic, road conditions and how the vehicle is driven. # Leather interior includes some Maztex material on selected high-impact surfaces. † i-Activsense, other safety technologies and driver-assistance features do not replace the driver's judgement, and should not be used in place of skilled and safe driving practices. It is the driver's sole responsibility to monitor vehicle surroundings and conditions and comply with all applicable laws at all times.

### EYES EVERYWHERE

Four separate cameras give you a complete view of what's around you with the handy 360° view monitor.<sup>†</sup>

### CLEVER COMFORT

The ventilated front row seats draw warm air away from your body, offering total comfort in warmer conditions.

### LIGHT THE WAY

The intelligent adaptive LED headlamps<sup>†</sup> adjust their beams to help visibility and avoid dazzling other drivers.

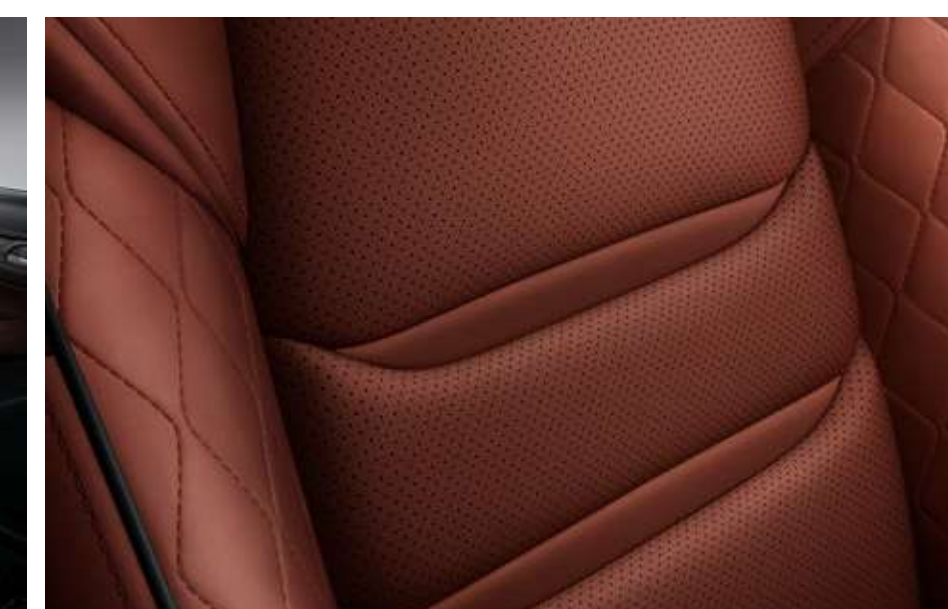


## MAZDA CX-8 ASAKI LE FEATURES – ADDITIONAL TO ASAKI

- » 2nd row captain's seats with power adjustment and ventilation function
- » 2nd row centre console with cup holder
- » Seat trim: Chroma Brown or Pure White nappa leather# with quilting

## POWERTRAIN

- » 2.2 litre in-line 4 cylinder 16 valve DOHC intercooled twin-turbo diesel (Skyactiv-D) engine with i-stop
- » Drivetrain: i-ACTIV AWD
- » Fuel consumption (combined): 6.0 l/100km (AWD)
- » Maximum power: 140kW @ 4,500rpm
- » Maximum torque: 450Nm @ 2,000rpm
- » Transmission: 6-speed auto (Skyactiv-Drive)
- » G-Vectoring Control Plus (GVC Plus)
- » Off road traction assist



\* Combined fuel consumption figures are based on ADR 81/02 test results. They are useful in comparing the fuel consumption of different vehicles. They may not be the fuel consumption achieved in practice. This will depend on traffic, road conditions and how the vehicle is driven. # Leather interior includes some Maztex material on selected high-impact surfaces. † i-Activsense, other safety technologies and driver-assistance features do not replace the driver's judgement, and should not be used in place of skilled and safe driving practices. It is the driver's sole responsibility to monitor vehicle surroundings and conditions and comply with all applicable laws at all times.

### LITTLE LUXURIES

Backseat passengers enjoy a place to rest their cups, and their arms, with this stylish centre console.

### TAKE COMMAND

Second row Captain Seats, with power adjustment and ventilation proves luxury isn't just for the front row.

### IT'S IN THE DETAIL

Exquisite quilting details, in both Chroma Brown or Pure White nappa leather can be found throughout the cabin.

# SPECIFICATIONS

| Powertrain                        |             | 2.5L I4 Petrol FWD   | 2.2L I4 Diesel FWD   | 2.2L I4 Diesel AWD   |
|-----------------------------------|-------------|--|--|--|
| Bore and stroke (mm)              |             | 89.0 x 100.0   | 86.0 x 94.3  | 86.0 x 94.3  |
| Compression ratio                 |             | 13.0 : 1   | 14.4 : 1   | 14.4 : 1   |
| Drivetrain                        |             | FWD  | FWD  | i-Activ AWD  |
| Emissions standard                |             | ----- Euro stage V -----   |  |  |
| Engine capacity (cc)              |             | 2,488  | 2,191  | 2,191  |
| Engine type                       |             | 2.5 litre in-line 4 cylinder 16 valve DOHC S-VT petrol (Skyactiv-G) engine | 2.2 litre in-line 4 cylinder 16 valve DOHC intercooled twin turbo diesel (Skyactiv-D) engine | 2.2 litre in-line 4 cylinder 16 valve DOHC intercooled twin turbo diesel (Skyactiv-D) engine |
| Fuel consumption (L/100km)*:      | Combined    | 8.1  | 5.9  | 6.0  |
|                                   | Extra urban | 7.2  | 5.4  | 5.5  |
|                                   | Urban       | 9.7  | 6.8  | 6.9  |
| CO <sub>2</sub> Emissions (g/km)* | Combined    | 187  | 154  | 158  |
| Fuel system                       |             | Electronic direct injection  | Common rail, electronic direct injection   | Common rail, electronic direct injection   |
| Fuel tank capacity (litres)       |             | 72   | 72   | 74   |
| Gear ratio:                       | 1st         | 3.552  | 3.487  | 3.487  |
|                                   | 2nd         | 2.022  | 1.992  | 1.992  |
|                                   | 3rd         | 1.452  | 1.449  | 1.449  |
|                                   | 4th         | 1.000  | 1.000  | 1.000  |
|                                   | 5th         | 0.708  | 0.707  | 0.707  |
|                                   | 6th         | 0.599  | 0.600  | 0.600  |
|                                   | Reverse     | 3.893  | 3.990  | 3.990  |
|                                   | Final drive | 4.957  | 4.111  | 4.111  |
| Maximum power (kW @ rpm)          |             | 140 @ 6,000  | 140 @ 4,500  | 140 @ 4,500  |
| Maximum torque (Nm @ rpm)         |             | 252 @ 4,000  | 450 @ 2,000  | 450 @ 2,000  |
| Recommended fuel                  |             | Unleaded (91RON or higher) or E10  | Diesel   | Diesel   |
| Throttle control                  |             | ----- Electronic (drive-by-wire) -----                                     |  |  |
| Transmission:                     |             | ----- 6-speed automatic (Skyactiv-Drive) -----                             |  |  |

\* Fuel consumption and CO<sub>2</sub> figures are based on ADR 81/02 test results. They are useful in comparing the fuel consumption of different vehicles. They may not be the fuel consumption and emissions achieved in practice. This will depend on traffic and road conditions and how the vehicle is driven.

## SPECIFICATIONS

| Model Availability |  | Sport | Touring | Touring SP | GT | Asaki | Asaki LE |
|--------------------|--|-------|---------|------------|----|-------|----------|
| 7-seat SUV:        | 2.5L I4 Petrol FWD / 6-speed automatic | ●     | ●       | ●          | —  | —     | —        |
|                    | 2.2L I4 Diesel FWD / 6-speed automatic | —     | —       | —          | ●  | ●     | —        |
|                    | 2.2L I4 Diesel AWD / 6-speed automatic | ●     | ●       | ●          | ●  | ●     | —        |
| 6-seat SUV:        | 2.2L I4 Diesel AWD / 6-speed automatic | —     | —       | —          | —  | —     | ●        |

| Dimensions                    |       | Sport             | Touring | Touring SP | GT    | Asaki | Asaki LE |
|-------------------------------|-------|-------------------|---------|------------|-------|-------|----------|
| Ground clearance laden (mm)   |       | 195               | 195     | 200        | 200   | 200   | 200      |
| Ground clearance unladen (mm) |       | 200               | 200     | 205        | 205   | 205   | 205      |
| Overall length (mm)           |       | ----- 4,900 ----- |         |            |       |       |          |
| Overall width (mm)            |       | ----- 1,840 ----- |         |            |       |       |          |
| Overall height (mm)           |       | 1,720             | 1,720   | 1,725      | 1,725 | 1,725 | 1,725    |
| Track (mm):                   | Front | ----- 1,595 ----- |         |            |       |       |          |
|                               | Rear  | ----- 1,600 ----- |         |            |       |       |          |
| Wheelbase (mm)                |       | ----- 2,930 ----- |         |            |       |       |          |

● = Standard, — = Not available.

# SPECIFICATIONS

| Chassis and Powertrain Technologies                           | Sport          | Touring        | Touring SP     | GT             | Asaki          | Asaki LE       |
|---|----------------|----------------|----------------|----------------|----------------|----------------|
| Automatic transmission drive selection                        | ●              | ●              | ●              | ●              | ●              | ●              |
| Automatic transmission kickdown switch                        | ●              | ●              | ●              | ●              | ●              | ●              |
| Electric Parking Brake with Auto Hold                         | ●              | ●              | ●              | ●              | ●              | ●              |
| Electric power assist steering                                | ●              | ●              | ●              | ●              | ●              | ●              |
| Hill Launch Assist (HLA) <sup>†</sup>                         | ●              | ●              | ●              | ●              | ●              | ●              |
| i-Activ AWD   | ○              | ○              | ○              | ○              | ○              | ●              |
| i-stop  | ●              | ●              | ●              | ●              | ●              | ●              |
| Off road traction assist                                      | ●*             | ●*             | ●*             | ●*             | ●*             | ●*             |
| Paddle shift gear control                                     | —              | ●              | ●              | ●              | ●              | ●              |
| Skyactiv-Body   | ●              | ●              | ●              | ●              | ●              | ●              |
| Skyactiv-Chassis  | ●              | ●              | ●              | ●              | ●              | ●              |
| Skyactiv-Vehicle Dynamics G-Vectoring Control Plus (GVC Plus) | ●              | ●              | ●              | ●              | ●              | ●              |
| Variable Geometry Turbo charger (VGT)                         | ● <sup>^</sup> | ● <sup>^</sup> | ● <sup>^</sup> | ● <sup>^</sup> | ● <sup>^</sup> | ● <sup>^</sup> |

| Chassis                          | Sport                        | Touring    | Touring SP | GT         | Asaki      | Asaki LE   |
|----------------------------------|------------------------------|------------|------------|------------|------------|------------|
| Brake diameter (mm):             | ----- 320 -----              |            |            |            |            |            |
| Front                            | ----- 325 -----              |            |            |            |            |            |
| Rear                             | ----- 325 -----              |            |            |            |            |            |
| Brake type:                      | ----- Ventilated disc -----  |            |            |            |            |            |
| Front                            | ----- Solid disc -----       |            |            |            |            |            |
| Rear                             | ----- Solid disc -----       |            |            |            |            |            |
| Suspension:                      | ----- MacPherson strut ----- |            |            |            |            |            |
| Front                            | ----- Multi-link -----       |            |            |            |            |            |
| Rear                             | ----- Multi-link -----       |            |            |            |            |            |
| Turning circle kerb to kerb (m): | ----- 11.6 -----             |            |            |            |            |            |
| Tyre size                        | 225/65 R17                   | 225/65 R17 | 225/55 R19 | 225/55 R19 | 225/55 R19 | 225/55 R19 |
| Tyre index                       | 102H                         | 102H       | 99V        | 99V        | 99V        | 99V        |
| Wheel size                       | 17 x 7.0 J                   | 17 x 7.0 J | 19 x 7.0 J | 19 x 7.0 J | 19 x 7.0 J | 19 x 7.0 J |

● = Standard, ●\* = AWD only, ●<sup>^</sup> = 2.2L Diesel only, ○ = Option, — = Not available.

<sup>†</sup> i-Activsense, other safety technologies and driver-assistance features do not replace the driver's judgement, and should not be used in place of skilled and safe driving practices. It is the driver's sole responsibility to monitor vehicle surroundings and conditions and comply with all applicable laws at all times.

# SPECIFICATIONS

| Chassis                            |  | Sport                         | Touring | Touring SP | GT    | Asaki | Asaki LE |
|------------------------------------|--|-------------------------------|---------|------------|-------|-------|----------|
| Wheel type                         |  | ----- Alloy -----             |         |            |       |       |          |
| Tyre size (spare)                  |  | ----- T155/80R17 -----        |         |            |       |       |          |
| Wheel size (spare)                 |  | ----- 17 x 4.0 T -----        |         |            |       |       |          |
| Wheel type (spare)                 |  | ----- Temporary (steel) ----- |         |            |       |       |          |
| Weights and Capacities             |  | Sport                         | Touring | Touring SP | GT    | Asaki | Asaki LE |
| Cargo room volume VDA (litres)     | Measured with 3rd row seats up and up to roof                                    | ----- 209 -----               |         |            |       |       |          |
|                                    | Measured with 3rd row seats up and up to roof (including underfloor storage)     | ----- 242 -----               |         |            |       |       |          |
|                                    | Measured with 3rd row seats folded and up to roof (including underfloor storage) | ----- 775 -----               |         |            |       |       |          |
| Gross Vehicle Mass (GVM) (kg)      | 2.5L I4 Petrol FWD / 6-speed automatic   | 2,360                         | 2,360   | 2,360      | —     | —     | —        |
|                                    | 2.2L I4 Diesel FWD / 6-speed automatic   | —                             | —       | —          | 2,495 | 2,495 | —        |
|                                    | 2.2L I4 Diesel AWD / 6-speed automatic   | ----- 2,555 -----             |         |            |       |       |          |
| Kerb weight (kg)                   | 2.5L I4 Petrol FWD / 6-speed automatic   | 1,799                         | 1,799   | 1,799      | —     | —     | —        |
|                                    | 2.2L I4 Diesel FWD / 6-speed automatic   | —                             | —       | —          | 1,906 | 1,906 | —        |
|                                    | 2.2L I4 Diesel AWD / 6-speed automatic   | 1,949                         | 1,949   | 1,949      | 1,978 | 1,978 | 1,977    |
| Payload Capacity (kg)              | 2.5L I4 Petrol FWD / 6-speed automatic   | 561                           | 561     | 561        | —     | —     | —        |
|                                    | 2.2L I4 Diesel FWD / 6-speed automatic   | —                             | —       | —          | 589   | 589   | —        |
|                                    | 2.2L I4 Diesel AWD / 6-speed automatic   | 606                           | 606     | 606        | 577   | 577   | 578      |
| Towing capacity <sup>¶</sup> (kg): | Braked (Petrol)  | 1,800                         | 1,800   | 1,800      | —     | —     | —        |
|                                    | Braked (Diesel)  | ----- 2,000 -----             |         |            |       |       |          |
|                                    | Unbraked   | ----- 750 -----               |         |            |       |       |          |
| Tow ball download maximum (kg)     |  | ----- 150 -----               |         |            |       |       |          |

<sup>¶</sup> When fitted with a Mazda Genuine Towing kit. Subject to State and Territory regulations.

## SPECIFICATIONS

| Exterior   | Sport | Touring | Touring SP | GT | Asaki | Asaki LE |
|--|-------|---------|------------|----|-------|----------|
| Daytime running lamps (LED)                                | —     | —       | —          | ●  | ●     | ●        |
| Exhaust extensions (chrome)                                | ●     | ●       | ●          | ●  | —     | —        |
| Exhaust extensions – Large (chrome)                        | —     | —       | —          | —  | ●     | ●        |
| Front fog-lamps (LED)                                      | —     | ●       | ●          | ●  | ●     | ●        |
| Green-tinted windscreen, side and rear windows             | ●     | ●       | ●          | ●  | ●     | ●        |
| Headlamps (LED)  | ●     | ●       | ●          | ●  | ●     | ●        |
| Headlamps auto on/off function                             | ●     | ●       | ●          | ●  | ●     | ●        |
| Power mirrors (with heating and auto folding function)     | ●     | ●       | ●          | ●  | ●     | ●        |
| Power sliding and tilt glass sunroof                       | —     | —       | —          | ●  | ●     | ●        |
| Power windows  | ●     | ●       | ●          | ●  | ●     | ●        |
| Rear spoiler   | ●     | ●       | ●          | ●  | ●     | ●        |
| Remote operated and hands free power tailgate (open/close) | —     | —       | —          | ●  | ●     | ●        |
| Roof rack mounting   | ●     | ●       | ●          | ●  | ●     | ●        |
| Tail-lamps (LED)   | ●     | ●       | ●          | ●  | ●     | ●        |
| Window demister (rear)                                     | ●     | ●       | ●          | ●  | ●     | ●        |
| Wipers (front) 2-speed with rain-sensing function          | ●     | ●       | ●          | ●  | ●     | ●        |
| Wiper (rear) with intermittent function                    | ●     | ●       | ●          | ●  | ●     | ●        |

● = Standard, — = Not available.

# SPECIFICATIONS

| Seats             |   | Sport | Touring | Touring SP | GT | Asaki | Asaki LE |
|-------------------|---|-------|---------|------------|----|-------|----------|
| Front seats with: | 2-position memory function (driver)                     | —     | —       | ●          | ●  | ●     | ●        |
|                   | 6-way power adjustment (passenger)                      | —     | ●       | ●          | ●  | ●     | ●        |
|                   | 8-way power adjustment (driver)                         | —     | ●       | —          | —  | —     | —        |
|                   | 10-way power adjustment (driver)                        | —     | —       | ●          | ●  | ●     | ●        |
|                   | Adjustable head restraints                              | ●     | ●       | ●          | ●  | ●     | ●        |
|                   | Heating function  | —     | ●       | ●          | ●  | ●     | ●        |
|                   | Height adjustment                                       | ●     | ●       | ●          | ●  | ●     | ●        |
|                   | Lumbar support adjustment (driver)                      | —     | ●       | ●          | ●  | ●     | ●        |
|                   | Rake and slide adjustment                               | ●     | ●       | ●          | ●  | ●     | ●        |
|                   | Seat back pockets                                       | ●     | ●       | ●          | ●  | ●     | ●        |
|                   | Ventilation function                                    | —     | —       | —          | —  | ●     | ●        |
| Rear seats with:  | 60/40 split fold backrest (2nd row)                     | ●     | ●       | ●          | ●  | ●     | —        |
|                   | 50/50 split fold backrest (3rd row)                     | ●     | ●       | ●          | ●  | ●     | ●        |
|                   | Adjustable head restraints                              | ●     | ●       | ●          | ●  | ●     | ●        |
|                   | Captain's seats (2nd row)                               | —     | —       | —          | —  | —     | ●        |
|                   | Centre console with USB and storage (2nd row)           | —     | —       | —          | —  | —     | ●        |
|                   | Centre fold down armrest (2nd row)                      | ●     | —       | —          | —  | —     | —        |
|                   | Centre fold down armrest with USB and storage (2nd row) | —     | ●       | ●          | ●  | ●     | —        |
|                   | Heating function (2nd row, outer)                       | —     | —       | ●          | ●  | ●     | ●        |
|                   | Power adjustment and walk in (2nd row)                  | —     | —       | —          | —  | —     | ●        |
|                   | One touch walk-in switch (2nd row)                      | —     | ●       | ●          | ●  | ●     | ●        |
|                   | Power adjustment (2nd row)                              | —     | —       | —          | —  | —     | ●        |
|                   | Rake and slide adjustment (2nd row)                     | ●     | ●       | ●          | ●  | ●     | ●        |
|                   | USB charging ports (3rd row)                            | —     | —       | —          | ●  | ●     | ●        |
|                   | Ventilation function (2nd row)                          | —     | —       | —          | —  | —     | ●        |

● = Standard, — = Not available.



# SPECIFICATIONS

| Safety and Security                                | Sport | Touring | Touring SP | GT | Asaki | Asaki LE |
|--|-------|---------|------------|----|-------|----------|
| 360° View Monitor†                                 | —     | —       | —          | —  | ●     | ●        |
| Adaptive Front-lighting System (AFS)†              | —     | —       | —          | ●  | —     | —        |
| Adaptive LED Headlamps (ALH)†                      | —     | —       | —          | —  | ●     | ●        |
| Advanced keyless entry                             | —     | ●       | ●          | ●  | ●     | ●        |
| Advanced keyless push-button engine start          | ●     | ●       | ●          | ●  | ●     | ●        |
| Airbags SRS:                                       |       |         |            |    |       |          |
| Front (driver and passenger)                       | ●     | ●       | ●          | ●  | ●     | ●        |
| Side (front)                                       | ●     | ●       | ●          | ●  | ●     | ●        |
| Curtain (front and rear)                           | ●     | ●       | ●          | ●  | ●     | ●        |
| Anti-lock Braking System (ABS)                     | ●     | ●       | ●          | ●  | ●     | ●        |
| Auto Door Lock (ADL)                               | ●     | ●       | ●          | ●  | ●     | ●        |
| Blind Spot Monitoring (BSM)†                       | ●     | ●       | ●          | ●  | ●     | ●        |
| Childproof rear door locks                         | ●     | ●       | ●          | ●  | ●     | ●        |
| Child restraint anchorage points:                  |       |         |            |    |       |          |
| ISOFIX (x2)  | ●     | ●       | ●          | ●  | ●     | ●        |
| Top tether (x4)                                    | —     | —       | —          | —  | —     | ●        |
| Top tether (x5)                                    | ●     | ●       | ●          | ●  | ●     | —        |
| Driver Attention Alert (DAA)†                      | ●     | ●       | ●          | ●  | ●     | ●        |
| Dynamic Stability Control (DSC)†                   | ●     | ●       | ●          | ●  | ●     | ●        |
| Electronic Brake-force Distribution (EBD)†         | ●     | ●       | ●          | ●  | ●     | ●        |
| Emergency Brake Assist (EBA)†                      | ●     | ●       | ●          | ●  | ●     | ●        |
| Emergency Stop Signal (ESS)†                       | ●     | ●       | ●          | ●  | ●     | ●        |
| Forward Obstruction Warning (FOW)†                 | ●     | ●       | ●          | ●  | ●     | ●        |
| High Beam Control (HBC)†                           | ●     | ●       | ●          | ●  | —     | —        |
| Intelligent Speed Assistance (ISA)†                | ●     | ●       | ●          | ●  | ●     | ●        |
| Lane-keep Assist System (LAS)†                     | ●     | ●       | ●          | ●  | ●     | ●        |
| Lane Departure Warning (LDW)†                      | ●     | ●       | ●          | ●  | ●     | ●        |
| Left-hand-side convex (wide angle) exterior mirror | ●     | ●       | ●          | ●  | ●     | ●        |

● = Standard, — = Not available.

† i-Activsense, other safety technologies and driver-assistance features do not replace the driver's judgement, and should not be used in place of skilled and safe driving practices. It is the driver's sole responsibility to monitor vehicle surroundings and conditions and comply with all applicable laws at all times.

# SPECIFICATIONS

| Seats (Cont.) |   | Sport | Touring | Touring SP | GT | Asaki | Asaki LE |
|---------------|---|-------|---------|------------|----|-------|----------|
| Seat trim:    | Black cloth   | ●     | —       | —          | —  | —     | —        |
|               | Black leather <sup>#</sup>  | —     | ●       | —          | ●  | —     | —        |
|               | Black Maztex/Black Grand Luxe <sup>®</sup> Synthetic Suede <sup>^</sup> | —     | —       | ●          | —  | —     | —        |
|               | Burgundy leather <sup>#</sup>   | —     | —       | —          | ●  | —     | —        |
|               | Chroma Brown Nappa Leather <sup>#</sup>                                 | —     | —       | —          | —  | ●     | ●        |
|               | Pure White Nappa Leather <sup>#</sup>                                   | —     | —       | —          | —  | —     | ○        |

| Interior  | Sport | Touring | Touring SP | GT | Asaki | Asaki LE |
|---|-------|---------|------------|----|-------|----------|
| 7-inch TFT LCD multi-information meter display  | —     | —       | —          | —  | ●     | ●        |
| Active Driving Display (windscreen)   | ●     | ●       | ●          | ●  | ●     | ●        |
| Air-conditioning (three-zone climate control) with independent rear control and vents (2nd row) | ●     | ●       | ●          | ●  | ●     | ●        |
| Ambient temperature display   | ●     | ●       | ●          | ●  | ●     | ●        |
| Cargo area 12 volt power outlet   | ●     | ●       | ●          | ●  | ●     | ●        |
| Centre armrest console  | ●     | ●       | ●          | ●  | ●     | ●        |
| Critical function warning lights/chimes   | ●     | ●       | ●          | ●  | ●     | ●        |
| Cupholders  | ●     | ●       | ●          | ●  | ●     | ●        |
| Door bottle holders (front and rear)  | ●     | ●       | ●          | ●  | ●     | ●        |
| Heated steering wheel function  | —     | —       | —          | —  | ●     | ●        |
| Instrument panel light dimmer   | ●     | ●       | ●          | ●  | ●     | ●        |

● = Standard, ○ = Option, — = Not available.

<sup>#</sup> Leather interior includes some Maztex material on selected high-impact surfaces. <sup>^</sup>Grand Luxe<sup>®</sup> is a registered trademark of Seiren Co., Ltd.

# SPECIFICATIONS

| Interior (Cont.)   |                                       | Sport | Touring | Touring SP | GT | Asaki | Asaki LE |
|--|---------------------------------------|-------|---------|------------|----|-------|----------|
| Interior illumination:                                     | Cargo room lamp (Incandescent)        | ●     | ●       | ●          | —  | —     | —        |
|  | Cargo room lamp (LED)                 | —     | —       | —          | ●  | ●     | ●        |
|  | Entry system with delayed fade        | ●     | ●       | ●          | ●  | ●     | ●        |
|  | Map reading spot lamps (Incandescent) | ●     | ●       | ●          | —  | —     | —        |
|  | Map reading spot lamps (LED)          | —     | —       | —          | ●  | ●     | ●        |
|  | Power window switches                 | ●     | ●       | ●          | ●  | ●     | ●        |
|  | Ambient lighting (LED)                | —     | —       | —          | —  | ●     | ●        |
| Leather-wrapped:   | Gear shift knob                       | ●     | ●       | ●          | ●  | ●     | ●        |
|  | Steering wheel                        | ●     | ●       | ●          | ●  | ●     | ●        |
| Mazda Radar Cruise Control (MRCC) with Stop & Go function† |                                       | ●     | ●       | ●          | ●  | ●     | ●        |
| One touch (up and down) power windows                      |                                       | ●     | ●       | ●          | ●  | ●     | ●        |
| Overhead sunglass storage box                              |                                       | ●     | ●       | ●          | ●  | ●     | ●        |
| Rear door window sunshade                                  |                                       | —     | —       | —          | ●  | ●     | ●        |
| Rear-view mirror with auto dimming function                |                                       | ●     | ●       | ●          | ●  | —     | —        |
| Rear-view mirror (frameless) with auto dimming function    |                                       | —     | —       | —          | —  | ●     | ●        |
| Tachometer and electronic odometer/tripmeter               |                                       | ●     | ●       | ●          | ●  | ●     | ●        |
| Tilt and telescopic adjustable steering wheel              |                                       | ●     | ●       | ●          | ●  | ●     | ●        |
| Trip computer  |                                       | ●     | ●       | ●          | ●  | ●     | ●        |
| Vanity mirrors (front) with illumination                   |                                       | ●     | ●       | ●          | —  | —     | —        |
| Vanity mirrors (front) with illumination (LED)             |                                       | —     | —       | —          | ●  | ●     | ●        |

● = Standard, — = Not available.

† i-Activsense, other safety technologies and driver-assistance features do not replace the driver's judgement, and should not be used in place of skilled and safe driving practices. It is the driver's sole responsibility to monitor vehicle surroundings and conditions and comply with all applicable laws at all times.

# SPECIFICATIONS

| Infotainment  | Sport | Touring | Touring SP | GT | Asaki | Asaki LE |
|---|-------|---------|------------|----|-------|----------|
| 8-inch full colour touch screen display (MZD Connect)         | ●     | ●       | ●          | —  | —     | —        |
| 10.25-inch widescreen display (Mazda Connect)                 | —     | —       | —          | ●  | ●     | ●        |
| AM/FM tuner   | ●     | ●       | ●          | ●  | ●     | ●        |
| Apple Car Play® and Android™ Auto <sup>§</sup>                | ●     | ●       | ●          | ●  | ●     | ●        |
| Auxiliary-audio input jack (3.5mm mini-stereo)                | ●     | ●       | ●          | ●  | ●     | ●        |
| Bluetooth® hands-free phone and audio capability <sup>§</sup> | ●     | ●       | ●          | ●  | ●     | ●        |
| Digital radio (DAB+)  | ●     | ●       | ●          | ●  | ●     | ●        |
| Internet radio integration (Stitcher™ and Aha™ )              | ●     | ●       | ●          | ●  | ●     | ●        |
| Multi-function commander control                              | ●     | ●       | ●          | ●  | ●     | ●        |
| Premium Bose® 273 watt amplifier and speakers                 | —     | —       | —          | ●  | ●     | ●        |
| Radio Data System (RDS) program information                   | ●     | ●       | ●          | ●  | ●     | ●        |
| Satellite navigation  | ●     | ●       | ●          | ●  | ●     | ●        |
| Speakers (6)  | ●     | ●       | ●          | —  | —     | —        |
| Speakers (10)   | —     | —       | —          | ●  | ●     | ●        |
| Steering wheel-mounted audio controls                         | ●     | ●       | ●          | ●  | ●     | ●        |
| USB-audio input ports (iPod compatible)                       | ●     | ●       | ●          | ●  | ●     | ●        |
| Wireless charger <sup>‡</sup>                                 | —     | —       | —          | ●  | ●     | ●        |

● = Standard, — = Not available.

<sup>§</sup> Please check the compatibility of your device (particularly your mobile phone) with the specific Mazda vehicle you intend to purchase as not all devices operate correctly. Visit [www.mazda.com.au/Bluetooth](http://www.mazda.com.au/Bluetooth) or consult your Mazda Dealer for further information. <sup>‡</sup>Wireless charging compatible with phones featuring Qi technology or adapter.

## SPECIFICATIONS

| Safety and Security (Cont.)  | Sport | Touring | Touring SP | GT | Asaki | Asaki LE |
|--|-------|---------|------------|----|-------|----------|
| Parking sensors (front)  | —     | ●       | ●          | ●  | ●     | ●        |
| Parking sensors (rear)   | ●     | ●       | ●          | ●  | ●     | ●        |
| Rear Cross Traffic Alert (RCTA) <sup>†</sup>   | ●     | ●       | ●          | ●  | ●     | ●        |
| Remote central locking (2 transmitters)  | ●     | ●       | ●          | ●  | ●     | ●        |
| Reverse camera   | ●     | ●       | ●          | ●  | ●     | ●        |
| Roll Stability Control (RSC) <sup>†</sup>  | ●     | ●       | ●          | ●  | ●     | ●        |
| Seat-belts (front) with pretensioners, load-limiters and height adjustable shoulder anchorages | ●     | ●       | ●          | ●  | ●     | ●        |
| Seat-belts (2nd row) with pretensioners and load-limiters                                      | ●     | ●       | ●          | ●  | ●     | ●        |
| Smart Brake Support (SBS) <sup>†</sup>   | ●     | ●       | ●          | ●  | ●     | ●        |
| Smart City Brake Support [Forward/Reverse] (SCBS F/R) <sup>†</sup>                             | ●     | ●       | ●          | ●  | ●     | ●        |
| Traction Control System (TCS) <sup>†</sup>   | ●     | ●       | ●          | ●  | ●     | ●        |
| Trailer Stability Assist (TSA) <sup>†</sup>  | ●     | ●       | ●          | ●  | ●     | ●        |
| Traffic Sign Recognition (TSR) <sup>†</sup>  | ●     | ●       | ●          | ●  | ●     | ●        |
| Tyre Pressure Monitoring System (TPMS) <sup>†</sup>  | ●     | ●       | ●          | ●  | ●     | ●        |

● = Standard, — = Not available.

<sup>†</sup> i-Activsense, other safety technologies and driver-assistance features do not replace the driver's judgement, and should not be used in place of skilled and safe driving practices. It is the driver's sole responsibility to monitor vehicle surroundings and conditions and comply with all applicable laws at all times.



## REST ASSURED — YOUR WARRANTY

The quality built into Mazda CX-8 is backed up by a 5 year, unlimited kilometre factory warranty and 6 year panel protection warranty.<sup>#</sup>

## HELP IS AT HAND — MAZDA ROADSIDE ASSISTANCE

Mazda Premium Roadside Assistance is now included with the purchase of all new Mazda vehicles. Whether it's a flat battery, locked-in keys, accident support and flat or damaged tyres, we've got you covered, day or night, city or country. With Mazda Premium Roadside Assistance, help is always there when you need it. (Terms and conditions apply.)

## MAZDA FINANCE — FINANCE, YOUR WAY

Mazda Finance offers flexible finance options to suit you or your business. You can choose from a Mazda Finance Fixed Rate Car Loan or Mazda Assured\*, a loan option that enables you to enjoy a new Mazda more often. Each finance option comes with the reassurance of a Mazda Tailored Rate – an interest rate tailored to your individual circumstances.

## MAINTAIN THAT ZOOM-ZOOM

Your Mazda CX-8 deserves the best in care. Servicing with Mazda Service Select gives your car the advantage of factory trained Service Technicians and advanced computer diagnostic systems. As well as maintaining your Mazda in A1 condition, you'll also be protecting your vehicle's outstanding resale value.

\*Terms, conditions, fees and charges apply. Mazda Assured Guaranteed Future Value products are available to approved customers of Mazda Finance, a division of Australian Alliance Automotive Finance Pty Limited ABN 63 002 407 703, Australian Credit Licence 513747. At participating dealerships only. <sup>#</sup>New 5 year unlimited kilometre warranty available on all brand new vehicles purchased from 1 August 2018. For full terms and conditions please visit <https://www.mazda.com.au/owners/warranty/>



For further information, visit [mazda.com.au](https://www.mazda.com.au)  
or Freecall 1800 034 411

All care is taken to ensure the accuracy of this brochure and availability of vehicles and features at the time of publication, however, to the extent permitted by law, Mazda Australia Pty Ltd will not be liable for any loss suffered or incurred by a purchaser or prospective purchaser if the content is inaccurate or not up to date, or if it withdraws any vehicles or features referred to in the brochure from the market. Specifications, features and model availability may vary from state to state and may change without notice. Please refer to [mazda.com.au](https://www.mazda.com.au) or consult your Mazda Dealer prior to placing an order to ascertain current information on model availability, specifications, options, features and prices. Mazda Australia Pty Ltd ABN 78 004 690 804. 211A Wellington Road, Mulgrave, Victoria 3170. iPod is a trademark of Apple Inc., registered in the US and other countries. Published March 2021. MAZ14670