



SNAPSHOTS

MINICAMERA SHOTS OF
OLDSMOBILE'S
Two New Sixes!

TWO MAGNIFICENT NEW OLDSMOBILE SIXES...

This year breaks Oldsmobile records.

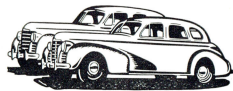
For the first time, you have the choice of TWO Oldsmobile Sixes—the Series "60" and the Series "70."

There is no more comfortable car in its class to ride in, nor a more economical car to operate, than the Series "60." It has Oldsmobile's new springing, new gear shift, new styling. It provides practically everything the most exacting would expect.

Only in the way that one thoroughbred excels another does the "70" stand out above the "60." It is a car of complete luxury, with the extra power, the quickened response, the extra flash of action that make it the one car which, within reasonable limits of cost, offers you everything you most desire.



This booklet shows you these fine cars and many of their most outstanding features. But, after all, there is no substitute for the thrill of handling and driving Oldsmobile yourself. There is one at your disposal . . . why not phone and arrange a drive . . . NOW?



...WITH ALL THE YEAR'S GREATEST MECHANICAL ENGINEERING FEATURES



Quadricoil Springing, presented in its most highly developed form in both the new Oldsmobiles, brings new joy to motoring . . . Rhythmic Ride . . . new safety . . . a new sense of ease and relaxation. Four Way Stabilization smooths out up-and-down motion, prevents side-to-side motion, stabilizes fore-and-aft motion, minimises side-sway and body-roll.

QUADRICOIL SPRINGING -



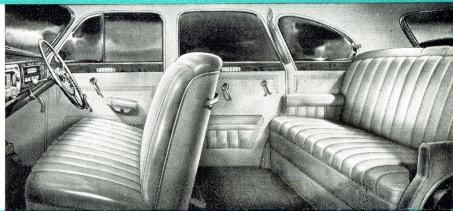
SAFETY SHIFT GEAR CONTROL

In Oldsmobile's HandiShift Gear Control, a small handle on the steering column replaces the old-fashioned lever in the floor. It is safer, because there is no risk of a sudden stop throwing passengers forward on to a gear handle. It gives more room, and extra comfort when three passengers are carried in the front compartment.



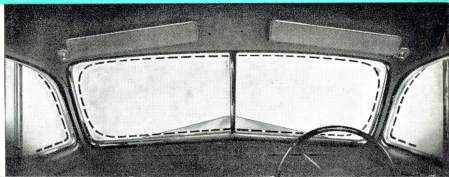
A CLOSE UP! LUXURIOUS, ROOMIER INTERIORS

Holden Bodies provide the utmost in luxury and convenience. Relax-O-Form Seating is deeply sprung at every point. "Unisteel" Turret Top construction ensures long life and safety.



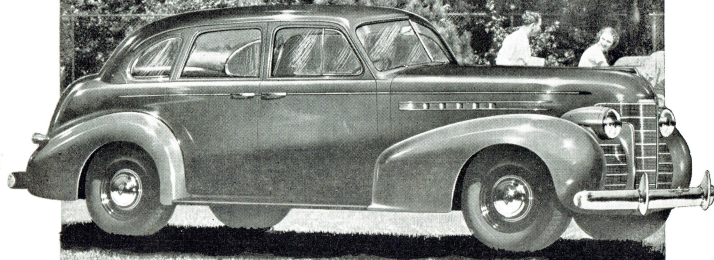
GREATER SAFETY! WIDER VISION!

Maximum range of vision is built into the new Oldsmobiles! Note how much more of the road you see! Note, too, thinner, stronger side pillars, wider, deeper windshield, squared window corners, and lower bonnet.



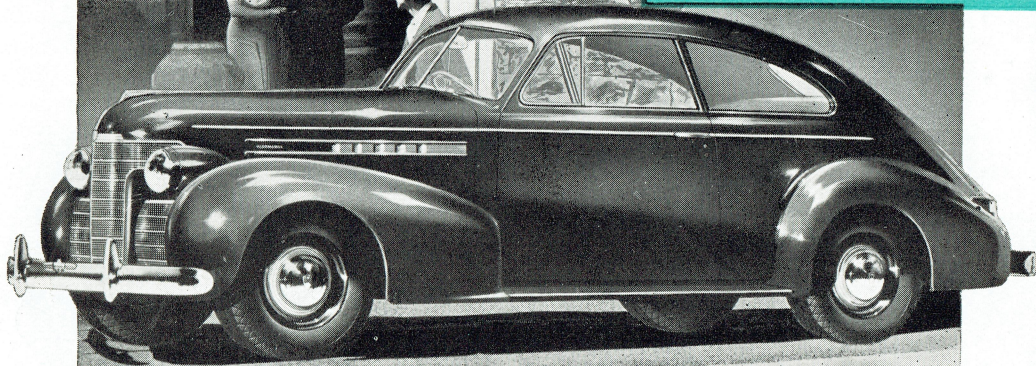
SERIES "60" SEDAN

Leads in economy and comfort. Carries 6 adults comfortably. Handi Shift Gear Control provides completely unobstructed floor space in front compartment.



SERIES "60" COUPE

Specially designed for Australian conditions. Accommodates six passengers in complete comfort. Instantly convertible to carry ample luggage for long business or holiday tours.



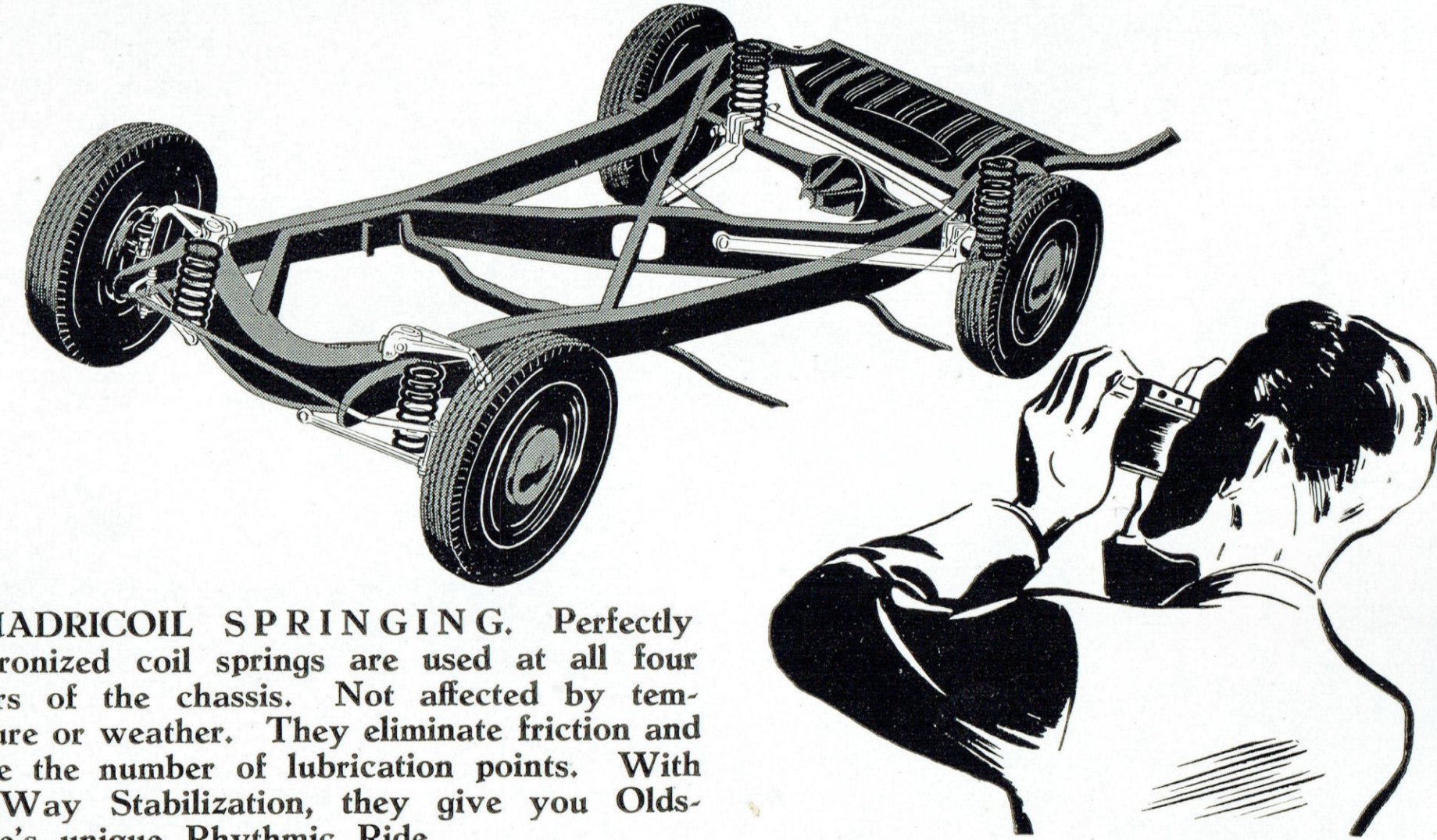
SERIES "70" SEDAN

A car of complete luxury and glorious styling. A 95 h.p. engine with the extra power, the quickened response, the extra flash of action you most desire. Features Rhythmic Ride.

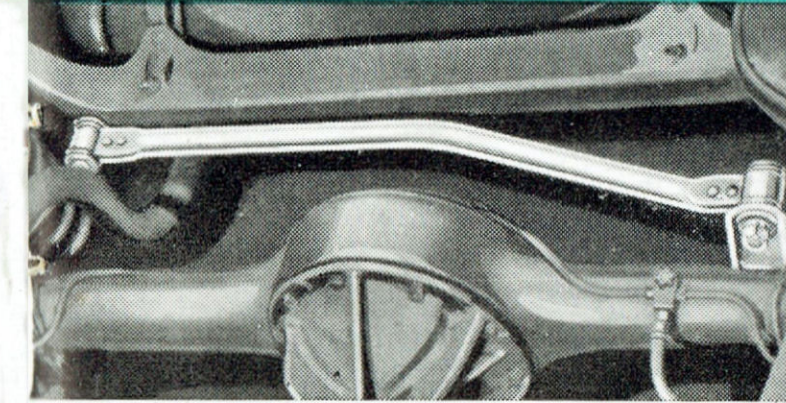


CLOSE UPS! HOW QUADRICOIL

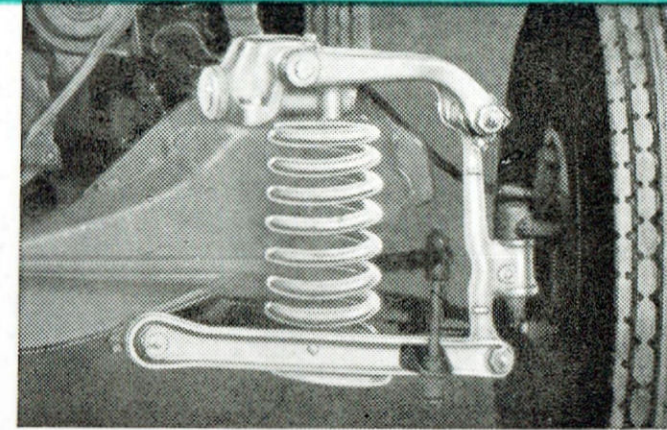
SPRINGING OPERATES!



1. **QUADRICOIL SPRINGING.** Perfectly synchronized coil springs are used at all four corners of the chassis. Not affected by temperature or weather. They eliminate friction and reduce the number of lubrication points. With Four-Way Stabilization, they give you Oldsmobile's unique Rhythmic Ride.

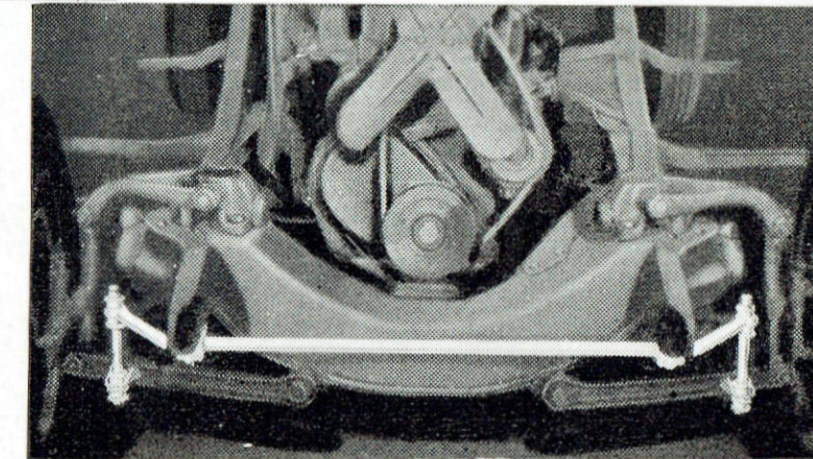


2. (At Left) **LATERAL REAR STABILIZER.** This bar, anchored at one end to the frame and at the other to the rear axle, effectively prevents side to side movement, and keeps car frame in alignment.

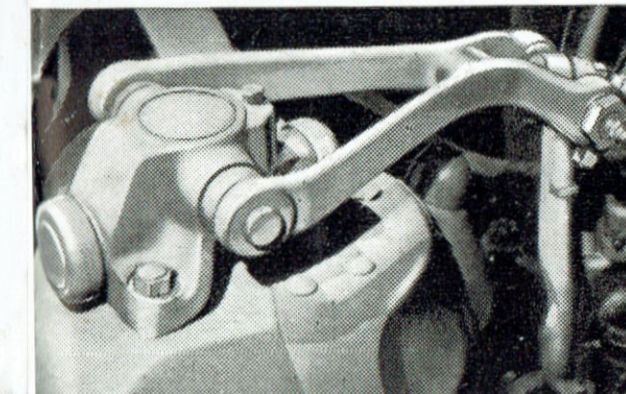


3. (Above) **INDEPENDENT FRONT WHEEL SPRINGING** steps over bumps, contributes greatly to safety and an easy, comfortable ride.

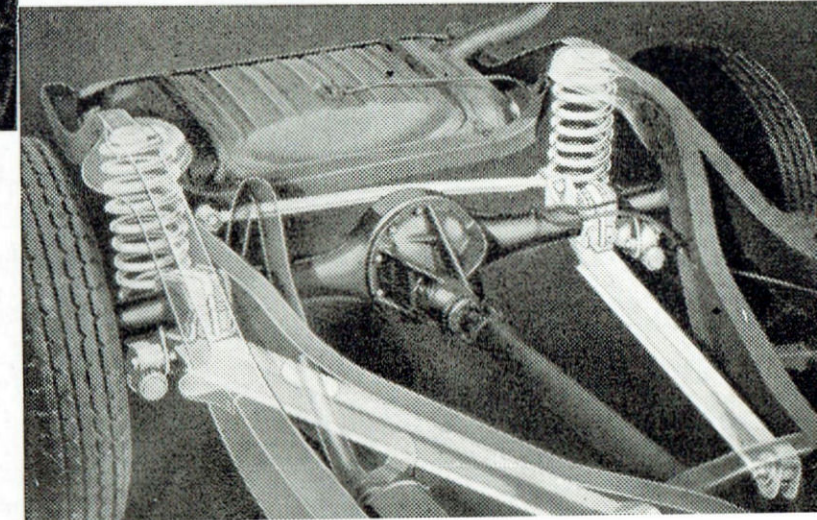
4. (Below) **DOUBLE ACTION HYDRAULIC SHOCK ABSORBERS**, of end-to-end discharge type, ensuring instant action, control vertical motion, absorb road shocks, and take up rebound.



5. (Above) **FRONT RIDE STABILIZER**, acting with Dual Stabilizing arms at rear, controls rolling and body sway.



6. (At Right) **TWO STABILIZING ARMS** extend from the rear axle to the Frame X-Member, preventing any fore-and-aft movement of the car.



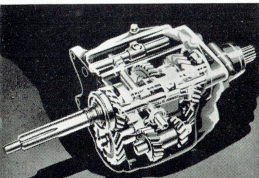


MORE FEATURES OF

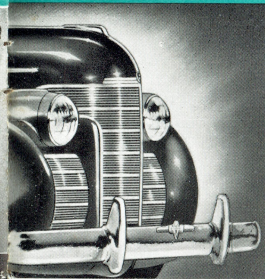
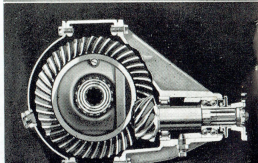
THE TWO NEW OLDSMOBILES

ADJUSTABLE DRIVING SEAT (At Right). An easily operated control makes possible the adjustment of the driving seat to the most comfortable position. Increases comfort, reduces fatigue, materially assists in ensuring greater safety.

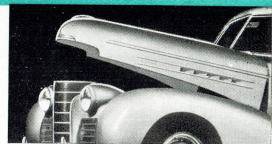
SILENT SYNCHRO-MESH GEARS (Below Left). Positive, quiet meshing is automatic, all gears being brought to the same rotating speed before engagement. Linked with Oldsmobile's new HandiShift, changing up or down is made superlatively easy and silent.



HYPOID REAR AXLE (At Right). Makes possible the use of a single-piece propeller shaft without the necessity for inconvenient and unsightly floor tunnels. Reduces bearing loads.



COMPLETELY NEW RADIATOR GRILLE (At Left). The styling of the two new Oldsmobiles is entirely new and completely outstanding. The front grille treatment, with its centre and two side units, the bonnet, which is narrow at the front, and the attractive mounting of the headlamps between the fenders and the bonnet are advanced in styling trend and most pleasing in appearance. The placing of the grilles ensures complete cooling and radiation.



OLDSMOBILE'S ALLIGATOR BONNET (Above). It eliminates all unsightly openings around the ornament and down the nose. Provides complete accessibility to every part of the engine, and is firmly held in position by a specially designed safety latch.

NEW DESIGN INSTRUMENT PANELS (At Left). The Instrument Panels of the new Oldsmobiles are most attractively designed and finished, and, by grouping all instruments before the driver's eyes, provide the greatest safety and convenience. Completely smooth for greater safety. The centre panel is removable for radio installation.



ABRIDGED SPECIFICATIONS

SERIES SIXTY

WHEELBASE—115 inches. Turning circle, 36½ feet.

ENGINE—Displacement 216 cubic inches. Electro-hardened lightweight pistons. Full-pressure lubrication.

FUEL AND COOLING SYSTEM—Down-draught carburetion. Automatic choke. Thermostatically controlled cooling system. Ball-bearing water pump.

CLUTCH AND TRANSMISSION—Single plate 9-inch dry plate clutch. All-Silent, Synchro-Mesh transmission.

ELECTRICAL SYSTEM—Under-bonnet battery, 15-plate, 6 volt. Air-cooled generator with automatic charging control. Positive shift starter.

SUSPENSION—Quadri Coil Springing. Independent front suspension. Heavy coil springs at rear. Four-Way Stabilization. Hydraulic shock absorbers, front and rear.

FRAME—Rigid-girder type, I-beam X-member construction.

STEERING—Dual Centre-Control, providing perfect steering geometry. Worm and double roller design.

BRAKES—SUPER-HYDRAULIC, self-energizing type. 11-inch drums with cast-iron braking surfaces. Mechanical braking system on rear wheels.

TYRES—Low-pressure, balloon tyres. 16 x 6.00 inches, mounted on safety steel wheels.

Armourplate Safety Glass in windscreen and all side windows in all models.

SERIES SEVENTY

WHEELBASE—120 inches. Turning circle, 38½ feet.

ENGINE—Displacement, 230 cubic inches. Electro-hardened light weight pistons. Full-pressure lubrication.

FUEL AND COOLING SYSTEM—Down-draught carburetion. Automatic choke. Thermostatically controlled cooling and recirculation system. Ball-bearing water pump.

CLUTCH AND TRANSMISSION—Single plate 9½ inch dry plate clutch. All-Silent, Synchro-Mesh Transmission.

ELECTRICAL SYSTEM—Under-bonnet battery, 15-plate, 6 volt. Air-cooled generator with automatic charging control. Positive shift starter.

SUSPENSION—QuadriCoil Springing, with Independent front suspension and heavy coil springs at rear. Four-Way Stabilization. Hydraulic shock absorbers, front and rear.

FRAME—Rigid-girder type, I-beam X-member construction.

STEERING—Dual Centre-Control, providing perfect steering geometry. Worm and double roller design.

BRAKES—SUPER-HYDRAULIC, self-energizing type. 11-inch drums with cast-iron braking surfaces. Mechanical braking system on rear wheels.

TYRES—Low-pressure, balloon tyres. 16 x 6.50 inches, mounted on safety steel wheels.

Prices, specifications, and equipment subject to change without notice.

GENERAL MOTORS - HOLDEN'S LIMITED
BRISBANE SYDNEY MELBOURNE ADELAIDE PERTH