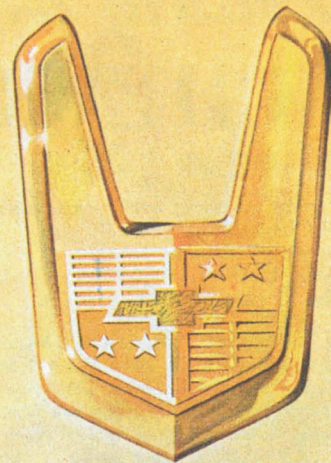
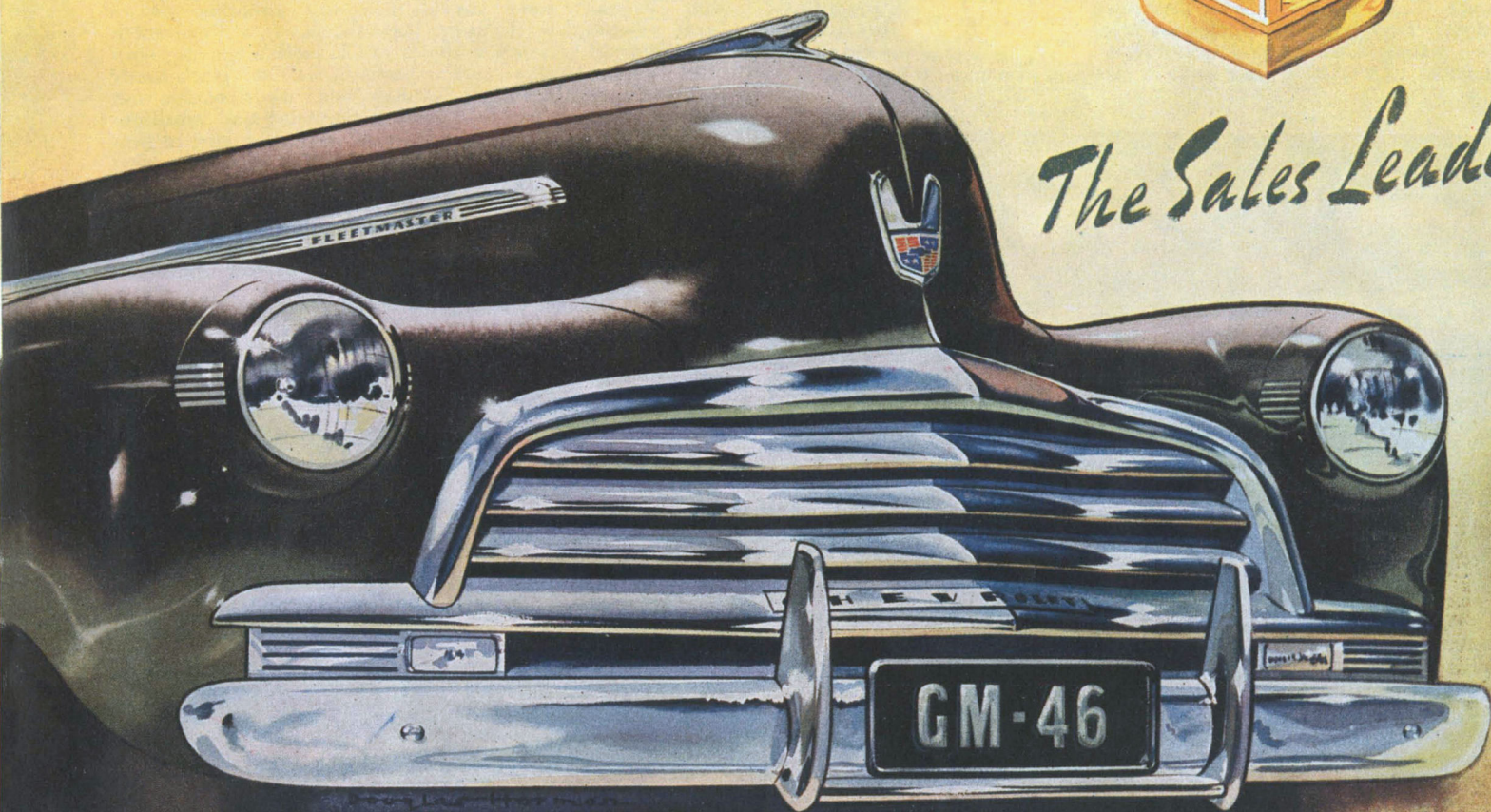


Welcome to
CHEVROLET



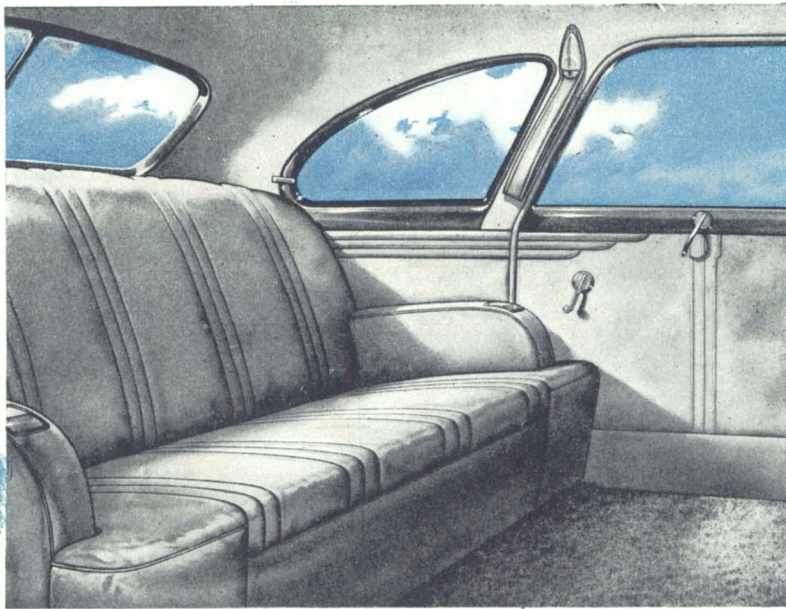
The Sales Leader



Beauty weds with advanced engineering in CHEVROLET "VICTORY" MODELS

Into an eager post-war world come two vividly new and surpassingly beautiful Chevrolet cars . . . "Victory" Models in name and in fact . . . triumphs of new-day engineering . . . winners again in style and value to carry on the torch of World Sales Leadership held by Chevrolet for 10 out of the 11 past production years.

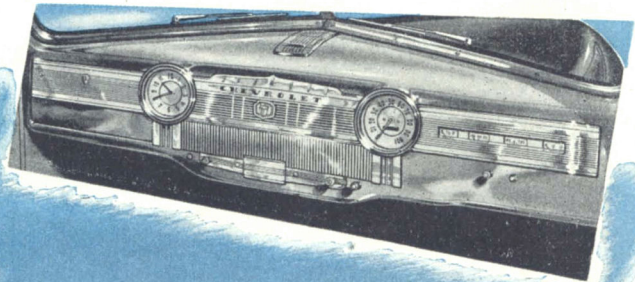
Dashing "Stylemaster" Sedan and luxurious "Fleetmaster" de Luxe are both a-sparkle with an aero-lined beauty that will make you say at once "These are the loveliest Chevrolets of all time!" And you'll be right. Their bodies by Holden are *at least* a year ahead of contemporary designs . . . lines are low and sleek . . . doors conceal the running boards . . . a massive 5-bar grille in gleaming chromium, with cleverly-placed rectangular

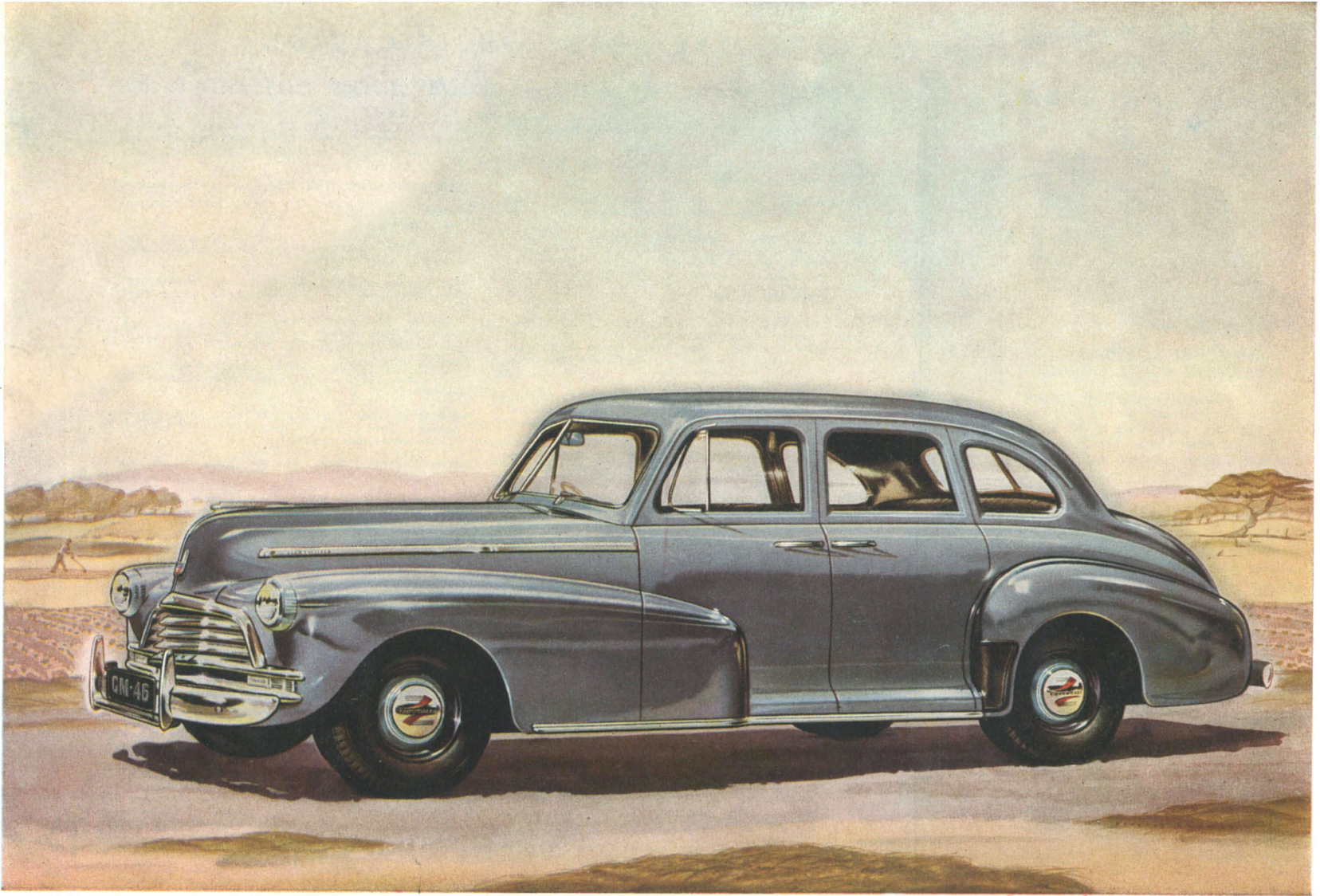


parking lights gives the front-end dynamic character that is typical of Chevrolet. Wartime advances in engineering richly endow these finer-than-ever Chevrolets. New metal compounds and alloys add rugged strength and defeat corrosion.

Chevrolet "Victory" Models are full of delightful surprises for you . . . packed with helpful modern features to make motoring with Chevrolet more zestful than any motoring you've experienced to date. Consider these things . . . a silky-smooth tiger-tough 90 horsepower engine of Chevrolet's famous Overhead Valve design — super performance at pinch-penny economy; again Chevrolet's "Ride Royal", made possible with exclusive Independent Front-Wheel Springing and synchronised Rear Springing to Chevrolet's own design; easiest of gear changes with Chevrolet's exclusive vacuum-assisted steering column gear shift; Chevrolet's perfected Full-Contact Hydraulic Brakes; Safety Glass all round; Full vision Windshield; Dashboard lighting adjustable for brightness; and a host of other exclusively-Chevrolet betterments to give you sheer value for money and the greatest motoring thrill of your life!

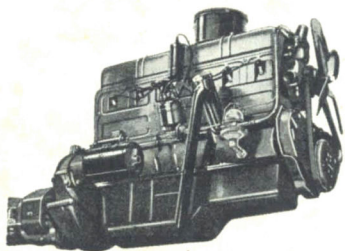
See your Chevrolet Dealer now. He'll prove every Chevrolet claim to the hilt. Remember to ask him about the G.M.A.C. Confidential Payment Plan that makes Chevrolet-owning easy as well as a matter for real pride.





Chevrolet "Victory" Fleetmaster De Luxe

CHEVROLET'S
 "Know How"
 IN ENGINEERING

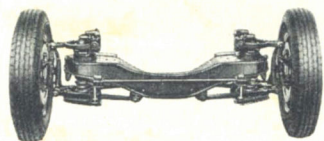
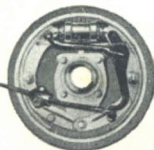


IMPROVED 6-CYLINDER
 OVERHEAD VALVE ENGINE

This is Chevrolet's post-war engine, built on the tried and proved valve-in-head principle, stepped up to 90 horsepower and with vastly improved performance, greater economy and life-long reliability.

"FULL CONTACT" HYDRAULIC
 BRAKES

A further improvement in Chevrolet's efficient hydraulic brakes is the moulding of brake linings giving more and smoother "stopping" power and added safety. Braking area, 161 sq. ins.



INDEPENDENT FRONT WHEEL
 SPRINGING

Again the world-famous "Gliding Ride" that makes Chevrolet the smoothest, steadiest-riding car you've ever known; independent front and special rear springing are harmonised to ensure luxurious travelling comfort.

ABRIDGED SPECIFICATIONS

CHEVROLET "VICTORY" STYLEMASTER and CHEVROLET "VICTORY" FLEETMASTER DE-LUXE

ENGINE: Overhead Valve. Six cylinders, 3½" bore, 3¾" stroke; 90 horsepower.

PISTONS: Lightweight Cast-iron, with flat head and slipper skirt; electroplated.

CRANKSHAFT: Weight, 68 lbs. Counter-balanced. Four main bearings. Rubber-floated harmonic balancer.

OILING SYSTEM: Refill capacity, 8½ pints. Positive pressure feed to crankshaft, camshaft and valve rocker arms. Connecting rod bearings lubricated by dippers at low speeds; at higher speeds by pressure jets of oil directed against the dippers. Gear-type pump in crankcase, with screen on intake side. Crankcase ventilator.

FUEL SYSTEM: Carter single-adjustment balanced down-draught carburettor with accelerating pump. AC air cleaner, silencer, flame arrester. Fuel mixture heated (thermostatic control) in manifold heat-chamber. High-reserve fuel pump, with filter. 11¾ gallon tank in rear.

COOLING SYSTEM: Capacity 11¾ quarts. Ribbed-cellular copper-core radiator. Self-adjusting, permanently-lubricated ball-bearing water pump. Full length water jackets. Nozzle-spray valve-seat cooling.

ELECTRICAL: Ignition with automatic and vacuum spark-advance control; octane selector. High-output ventilated generator. Voltage regulator. 15 plate battery 105 ampere hours. Battery under engine bonnet. Mechanical-shift starter.

TRANSMISSION: Synchro-mesh; helical gears throughout. Vacuum gear shift.

CLUTCH: Diaphragm-spring type, ventilated. Cushion-mounted disc with radial slotted, braided moulded facings riveted on clock-spring-steel cushions. Permanently lubricated ball throw-out bearing.

POWER PLANT MOUNTING: Five-point cushion-balanced.

FRAME: Box-girder type, with flanged box-section side-rails and cross-members.

REAR AXLE: Semi-floating. Hypoid drive gears. One-piece banjo-type pressed-steel housing. One-piece differential case.

REAR SUSPENSION: Semi-elliptic springs, tapered leaf-ends; threaded shackles. Double-acting hydraulic shock absorbers.

BRAKES. Four wheel hydraulic. 11" brake drums, with cast-iron braking surfaces and cooling ribs. Mechanical hand brakes, with under-cowl trigger-release lever.

FRONT SUSPENSION: Independent Front Wheel Suspension, with built-in double-acting hydraulic shock absorbers. Ride stabilizer.

STEERING GEAR: Worm and ball-bearing roller-sector fully adjustable; worm mounted on tapered roller bearings; 17½ to 1 ratio. Shockproof steering.

WHEELS AND TYRES: Five short-spoke steel disc wheels. Five 6.00—16 tyres.

LIGHTS: Super-beam headlamps. Separate parking lamps mounted in radiator grille. Duel tail and stop lights. Separate rear-licence lamp.

WHEELBASE: 116 inches.

BODY EQUIPMENT (ALL MODELS)

Fine quality restful upholstery; all-steel structure with Holden "Turrettop" and solid steel under-body. Sloping "V" windshield with wiper at bottom. No-draught ventilation. Cowl ventilator. Safety Glass in windscreen and all windows. Adjustable driver's seat. Full-width front-seat cushion. Adjustable sun-visor. Rear-view mirror. Convenient parcel shelf behind rear seat. Rear seat arm rests. Scuff Plates. Concealed running boards. Large luggage compartment with Tool Compartment. Tool kit.

Bumpers front and rear. Rubber pads on pedals. Rain deflectors. Victory "Stylemaster" Model has dome lamp.

INSTRUMENT PANEL: Indirectly lighted with control for brightness. Includes battery charge indicator; oil-pressure gauge; speedometer; illuminated theft-resisting ignition lock; lighting switch; choke and throttle controls; petrol gauge; headlamp-beam indicator; ash receiver and locking glove compartment. Engine heat indicator. Provision for installation of radio controls.

ADDITIONAL EQUIPMENT ON FLEETMASTER DE LUXE MODEL

Extra sun-visor with vanity mirror. Extra windscreen wiper. Click on instrument panel. Ventilating rear-quarter windows. Ash receivers in rear seat arm rests. Two assist straps. Robe

rail. Rear quarter lamps instead of dome light. Rear compartment foot-rest. Bumper guards. Chrome-plated licence-plate lamp. Pileless carpet in luggage compartment. Cigar lighter.

Specifications and Equipment Subject to Change Without Notice.

GENERAL MOTORS-HOLDEN'S LTD.

Brisbane — Sydney — Melbourne — Adelaide — Perth