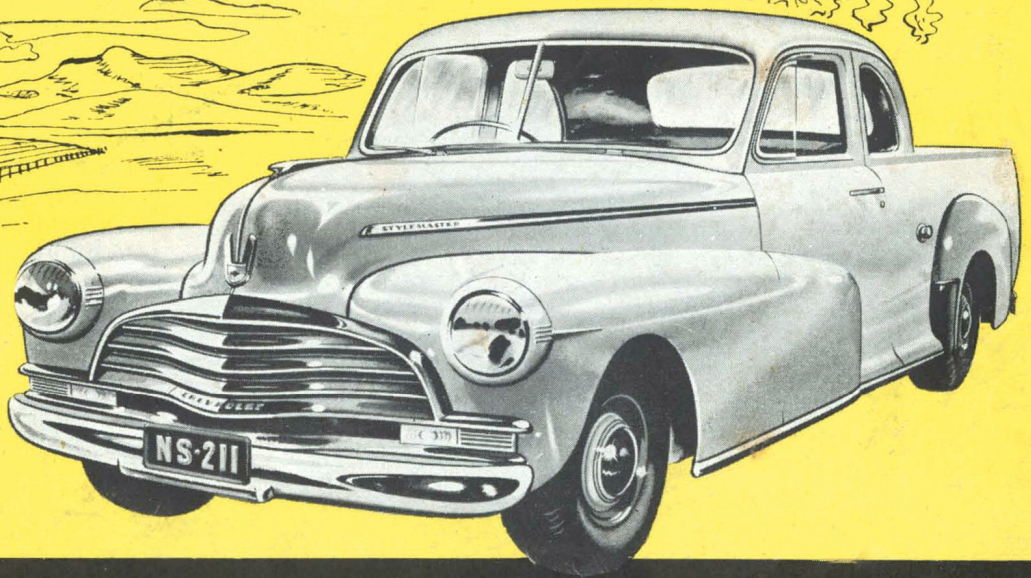
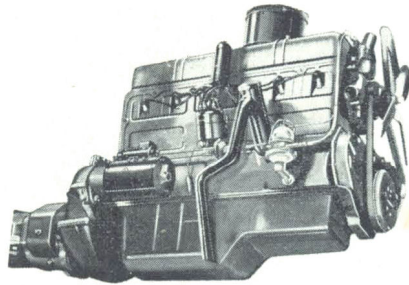


EFFICIENCY AND ECONOMY
PLUS
PASSENGER CAR COMFORT



CHEVROLET
10-12 cwt. UTILITIES

90 H.P. BUT GREATER ECONOMY

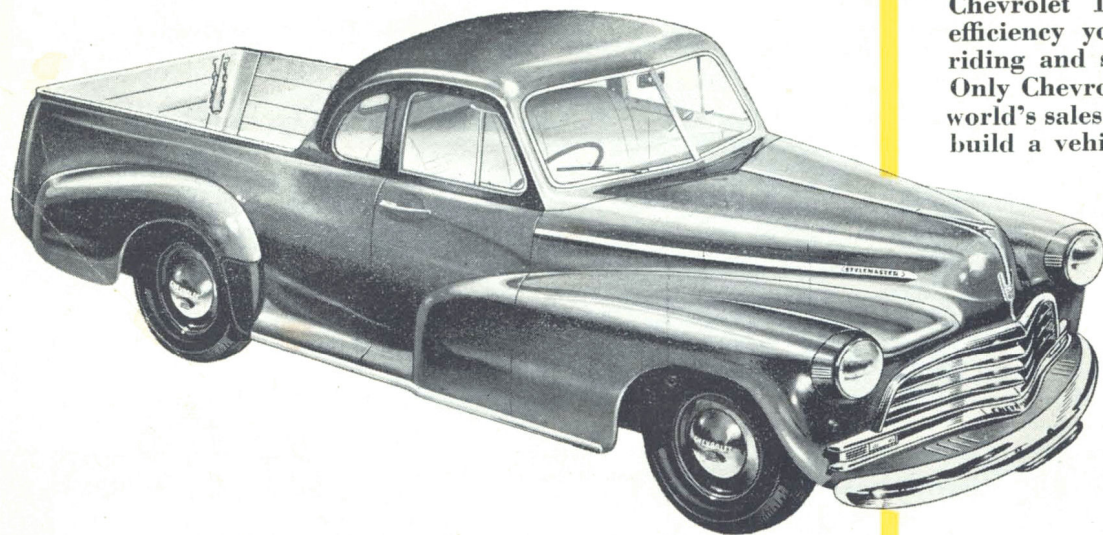
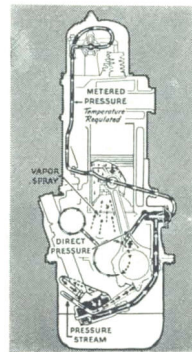


Chevrolet's famous 6-cylinder overhead valve engine, that never needs replacing, now features improved power with greater economy than ever. Horsepower is increased to 90, and maximum pulling power is developed at lowest engine speeds, a vital factor under capacity loads. No other engine gives you the power you need for fast, smooth delivery work with such an amazing economy of operation.

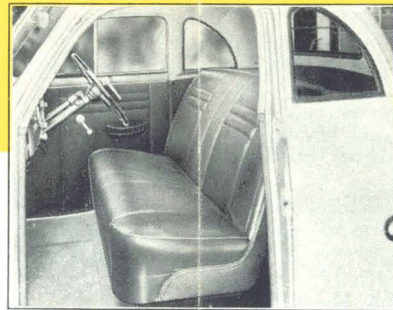
PERFECTED LUBRICATION

Chevrolet's perfected 4-way lubrication system provides for each engine unit the best type of oiling.

1. Low pressure supply to valve mechanism.
2. High pressure supply to crankshaft and camshaft bearings through drilled passages.
3. Connecting-rod dippers spray oil to pistons.
4. High pressure jets of oil flood connecting rod bearings at high speeds.



ONLY CHEVROLET WORLD'S SALES LEADER CAN OFFER SUCH VALUE



SMART AND COMFORTABLE FOR ALL OCCASIONS

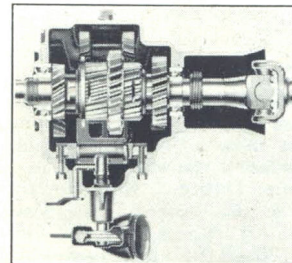
Above is shown the wide, deep, comfortable seating of the Chevrolet 10-12 cwt. Utility. Ample accommodation is provided for two adults and two children, and the seat is adjustable for both length and height. Passenger Car refinements include wide-angle "Pilot-Seat" driving vision, big parcel shelf behind the seat and lock-up glove box.

DESIGNED FOR DUAL-PURPOSE DUTY. Every feature of the Chevrolet 10-12 cwt. is designed to give the economy and efficiency you expect of a delivery unit plus the comfortable riding and smooth performance of a quality passenger car. Only Chevrolet, world's largest motor vehicle manufacturers and world's sales leader for eleven out of twelve production years, could build a vehicle to combine these two requirements so perfectly.

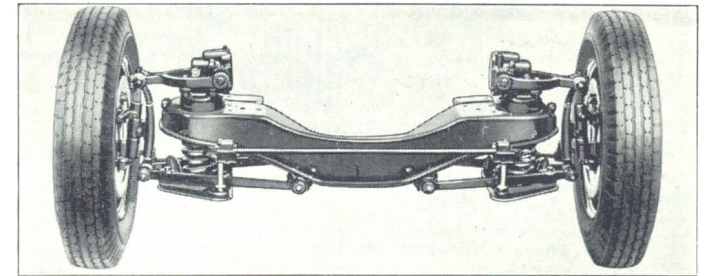
That is why in style, comfort, performance, overall economy and body capacity the new Chevrolet 10-12 cwt. utilities are just what they are built to be — the ideal business-leisure vehicles.

GENUINE ALL-SILENT SYNCHRO-MESH TRANSMISSION

The ideal gear change for delivery work — Genuine synchromesh makes smooth "clashless" changes certain, while Helical type gears throughout permit silent drive in all speeds.

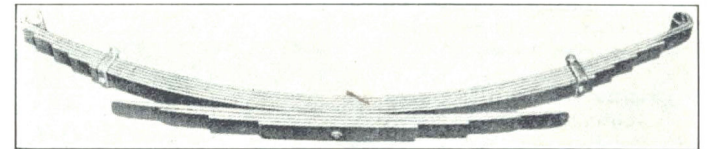


INDEPENDENT FRONT WHEEL SPRINGING



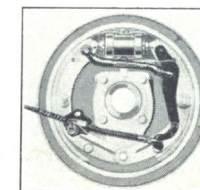
Only Chevrolet offers the outstanding riding comfort and smoothness provided by *unitized* Independent Front Wheel Springing—the front spring suspension, shock absorbers, brakes and steering connections form a single assembly, adjusted and accurately aligned before it is attached, as a unit, to the chassis frame. This exclusive Chevrolet feature provides protection for fragile loads and gives passengers the luxurious riding comfort of an expensive modern car.

"DUAL-RATE" REAR SPRINGING



Working in perfect co-ordination with the front wheel springing described above, Chevrolet's "dual-rate" rear springs give unsurpassed riding qualities. Springs are equipped with new tension-type shackles at the rear—the mounting bracket is a strap of heavy spring steel attached to the underside of the side-rail. As the spring is compressed the pull exerted against the spring by the shackle being in tension progressively increases the spring deflection rate; the auxiliary leaves come into action when a full load is carried. Spring movement is controlled by double-acting hydraulic shock absorbers.

PERFECTED "FULL-CONTACT" HYDRAULIC BRAKES



The safe, quick action brakes that delivery work demands . . . in addition to Hydraulic actuation, Chevrolet uses double articulated shoe linkage which ensures full contact between drums and lining, making use of all the 161 sq. ins. of braking area available. This also eliminates brake fading and increases the life of brake linings. The hand-brake operates mechanically on the rear shoes.

MODELS AVAILABLE

CHEVROLET OPEN UTILITY.—Max. Width of body at floor line, 4 ft. 10 $\frac{3}{4}$ in.; Taildoor opening, 3 ft. 11 $\frac{3}{8}$ in.; Maximum floor length, 7 ft.; Height of sides (Floor to top of sides), 1 ft. 8 in.

CHEVROLET WELLSIDE BODY.—Maximum floor length, 7 ft.; Taildoor opening, 3 ft 11 $\frac{3}{8}$ in.; Max. width of body at floor line, 4 ft. 10 $\frac{3}{4}$ in.; Height of Sides, 26 $\frac{3}{4}$ in.

STANDARD EQUIPMENT INCLUDES—a Neat "snap-on" waterproof cover for the load compartment when it is not in use.

CHEVROLET 10-12 CWT. UTILITIES—THE IDEAL BUSINESS-LEISURE VEHICLES

CHEVROLET 10-12 CWT. UTILITIES

ENGINE.—Six cylinders, overhead valve; 3½ in. bore, 3¾ in. stroke; S.A.E. or R.A.C. rating, 29.4 h.p.; develops 90 h.p. at 3,300 r.p.m.

VALVES.—Intake, 1-41/64 in. diameter; exhaust 1-15/32 in.

PISTONS.—Lightweight cast iron, with flat-head and slipper-skirt; surface treated.

CONNECTING ROD BEARINGS.—2-5/16 in. diameter, 1½ in. long. Material, babbitt.

CRANKSHAFT.—Weight, 68 pounds. Counter-balanced. Rubber-floated Harmonic balancer combined with crankshaft pulley. Four main bearings.

BEARINGS.—Four removable steel-backed main bearings. Four removable steel-backed camshaft bearings. Cast babbitt connecting rod bearings.

OILING SYSTEM.—Refill capacity, 8½ pints. Positive pressure feed to crankshaft, camshaft, and valve rocker arms. Connecting rod bearings lubricated by dippers at low speeds, and at higher speeds by pressure jets of oil directed against the dippers. Gear type pump in crankcase, with screen on intake side. Crankcase ventilator.

FUEL SYSTEM.—Carter single-adjustment balanced down-draught carburettor, with accelerating pump. AC air cleaner, silencer and flame arrester. Fuel mixture heated (thermostatic control) in manifold heat chamber. Mechanical high-reserve fuel pump with filter; 13-1/3 gallon tank to rear of driver's seat.

COOLING.—Ribbed cellular copper-core radiator. Capacity, 12½ quarts. Self-adjusting permanently lubricated, ball bearing water pump. Full-length water jackets. Nozzle-spray valve-seat cooling.

ELECTRICAL.—Delco-Remy ignition with automatic and vacuum spark-advance control; octane selector. High-output ventilated generator. Voltage regulator. 15-plate battery. 105 ampere hours. Battery under bonnet. Push-button solenoid starter.

CLUTCH.—Diaphragm spring type ventilated. Cushion mounted disc with radial slotted braided moulded facings rivetted on clock spring steel cushions. Permanently lubricated ball throw-out bearing.

TRANSMISSION.—All-silent Synchro-mesh, with helical gears throughout. Vacuum gear-shift on all models.

POWER PLANT MOUNTING.—5 point cushion-balanced.

FRAME.—Box-girder type, with flanged box-section side rails and cross members.

REAR AXLE.—Semi-floating, spiral Hypoid drive gears. One-piece banjo-type pressed-steel housing. One-piece differential case.

REAR SPRINGS.—Dual deflection rate to give good riding qualities, both when lightly and fully loaded.

BRAKES.—Four-wheel hydraulic. 11 in. brake drums, with cast iron braking surface and cooling ribs. Mechanical hand brakes, with under-cowl trigger-release lever.

FRONT SUSPENSION.—Independent Front Wheel Suspension, with built-in double-acting hydraulic shock absorbers. Front ride stabiliser.

STEERING GEAR.—Worm and ball-bearing roller-sector, fully adjustable; worm-mounted on tapered roller bearings; 17½ to 1 ratio. Shock-proof steering.

WHEELS AND TYRES.—Five short-spoke steel disc wheels. Spare wheel inc. STD wheel size 16 x 4.00E.

TYRES.—6.00-16-6 ply STD — (6.50-16-6 ply is optional on 16 x 4.50E wheels).

INSTRUMENT PANEL.—Indirectly lighted, with control for brightness. Includes battery charge indicator, oil-

pressure gauge, speedometer, illuminated theft-resisting ignition lock, lighting switch, choke and throttle controls, petrol gauge, headlamp-beam indicator, glove compartment with flush lock, ash receiver, engine heat indicator. Covered openings for installation of radio controls and clock.

EQUIPMENT.—High-pressure gun lubrication, tool kit, tail and stop light, rear vision mirror, vibrator horn, super-beam headlamps with separate parking lamps. Adjustable driver's seat. No-draught ventilation. Front bumper. Scuff-plates. Electric windscreen wiper and adjustable sun visor. Rubber pads on clutch and brake pedals. Dome lamp. Parcel shelf. Safety glass in windscreen and side windows — concealed running boards. Cowl ventilator — armrests on both doors.

WHEELBASE.—116 inches.

Specifications and Equipment Subject to Change Without Notice.

PROTECTIVE OWNER SERVICE POLICY.

For 90 days or 4,000 miles of operation, you are protected against defective workmanship or material under the terms of General Motors-Holden's Ltd. unusual Owner Service Policy. In addition to this, you are entitled to two thorough inspections and adjustments of your Chevrolet without any charge whatsoever. Genuine Chevrolet Spare Parts, and Expert Service are available throughout Australia.

G.M.A.C. CONFIDENTIAL PAYMENT PLAN.

When you acquire your "Chevrolet" under the G.M.A.C. Confidential Payment Plan you enter into business relations, not with an outside organisation, but with a company which is a unit of General Motors, and thus has a direct interest in maintaining your satisfaction in your Utility. Because General Motors Acceptance Corporation is the largest Hire Purchase Institution in the world, it is able to offer low rental charges, and to arrange a payment plan fitted to your individual requirements. Your local Dealer can explain G.M.A.C. Plan to you and arrange your payments to suit you.

GENERAL MOTORS - HOLDEN'S LIMITED

BRISBANE

SYDNEY

MELBOURNE

ADELAIDE

PERTH

PRINTED IN AUSTRALIA.