

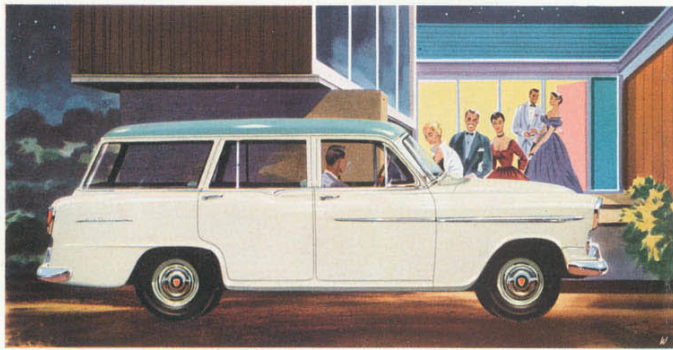


*THE NEW HOLDEN STATION SEDANS*



**Right wherever you go . . .  
whatever you do**

Here are two brilliant new Holdens, specially designed to make going places more fun . . . versatile beauties in which General Motors-Holden's engineers have combined all that's best in overseas design with the features Australians need most in their own Station Sedan.\* The Holden Station Sedans give you magnificent visibility all round, and all the smartness, all the lithe appeal of the beautiful Holden Sedans with all the extra convenience and spacious load carrying ability you need to obtain your full share of out-door living. *And* you get all the performance, economy, comfort and dependability which have helped make Holden first choice with Australian car buyers. In Station Sedans, too, Holden gives you more for your money.



*The glamorous* HOLDEN SPECIAL STATION SEDAN

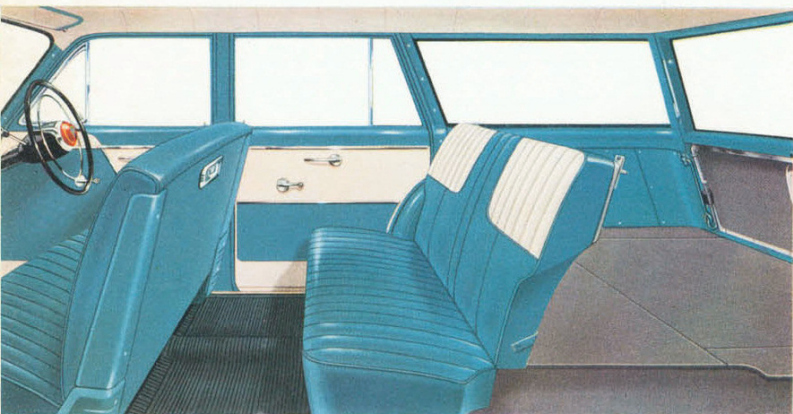
Sleek, sweeping styling . . . thrilling luxury inside and out . . . welcome anywhere in town or country . . . that's the story of the brilliant New Holden Special Station Sedan. Rich chrome and glowing combinations of new two-tone fashion colors outside with colorful two-tone trim inside present an unmistakable air of glamor.



*The handsome* HOLDEN STANDARD STATION SEDAN

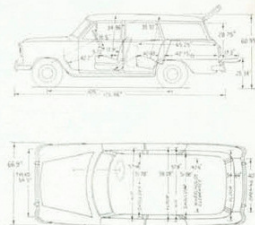
This low priced model brings you all Holden's beauty of line, all the convenience of a Station Sedan . . . all the fun and excitement of Station Sedan motoring. With complete comfort for six, the new Holden Standard Station Sedan is available in attractive single tone colors with harmonious interior color treatment.

## Sedan comfort and styling . . . plus wonderful utility

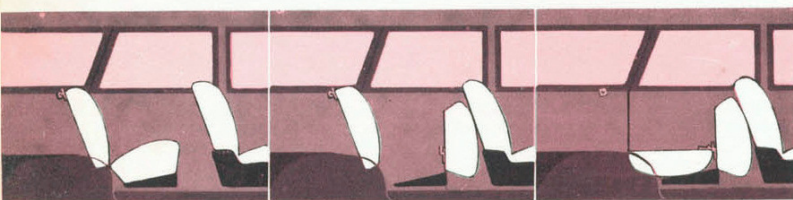


Open any one of the doors on the Holden Station Sedan\* and you get an immediate impression of gleaming elegance, luxurious appointments, and outstanding roominess. Upholstery is washable and has been carefully chosen for care-free service and long lived durability—being of Elascofab\* in the Special and P.V.C. plastic coated fabric in the Standard. With front and rear seat hiproom more than 57 in., there is ample room for three big people in each seat. In the Special both seats have soft foam padding.

The Special also gives you arm rests in the front, and automatic switches that operate the dome lamp when either front door is opened. The front seat is readily adjustable, backwards and forwards. There is also provision by the use of shims to adjust seat up or down.



## Quick, simple conversion from fun to freight



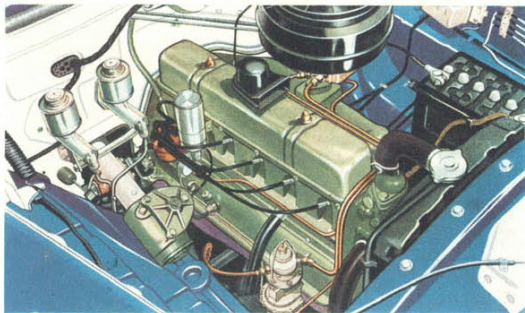
Tilting the rear seat cushion and folding the rear seat-back forward to increase cargo capacity is done in an instant — and you get a smooth floor space extending to the base of the folded rear seat cushion which forms a vertical load stop. For camping this space gives ample room for sleeping.





### Wonderful ease of control

Whether you're riding light or riding loaded, the miles float past with smooth serenity. The long, 105 in. wheelbase, low centre of gravity, wide track, stabiliser bar on the front suspension and the new Holden re-circulating ball bearing steering all combine to give sure and steady road holding control and comfort. The Aerobilt, integral construction gives you increased body strength — freedom from squeaks and rattles, and elimination of unnecessary weight. On both highway and rough bush track, motoring is fun in a Holden Station Sedan.



### Dependable power ... with economy

Holden Station Sedans are powered by the famous overhead valve 6 cylinder 21 h.p. Holden engine, which has proved its dependability in millions of miles of owner driving. You have 70 gross brake horsepower to take you places with ease. At the same time Holden provides economy that is outstanding for a vehicle of its size and horsepower.

## ABRIDGED SPECIFICATIONS

**Engine :** Six cylinder, O.H.V. design; Bore, 3 in.; Stroke, 3 1/2 in.; S.A.E. or R.A.C. rating, 21.6 h.p.; Max. gross brake H.P., 70 at 4000 R.P.M. Max. gross brake torque, 110 lb. ft. at 1200 R.P.M.

**Compression Ratio :** 6.8 to 1.

**Crankshaft :** Drop forged, heat treated, fully counterbalanced. Harmonic Balancer.

**Pistons :** Alum. alloy, two taper faced torsional type compression rings and one oil control ring with expander.

**Camshaft :** Four bearing steel forging with integral cams and helical gear for distributor and oil pump drive.

**Connecting Rods :** Length, 5 1/2 in.; Piston pin, 3/8 in. dia. Steel-backed babbit crankpin bearings. Con. rods heat treated. Oil delivered positively to the thrust side of the cyl. bore, ensuring adequate lubrication at starting.

**Oiling System :** Full pressure system, lubricating camshaft bearings, main and con. rod bearings, timing gears, crank pins, bores, rocker gear, tappets, etc.

**Crankcase Ventilation :** Ventilation of engine crankcase, valve cover, etc., by air intake through filter in cover. Engine fumes drawn through ventilator pipe located externally. Pipe extended downwards with lower end shaped to give extractor effect, maintaining constant flow of air through crankcase.

**Fuel Supply :** Stromberg double venturi down draught type Carburettor with power jet and positive action accelerating pump. Hand choke with throttle cracker. A.C. Fuel and Vacuum Booster Pump. 9 1/2 Imp. Gal. tank. Fuel mixture heated (thermostatic control) in intake manifold heat chamber. Oil Bath Air Cleaner and Silencer.

**Electrical System :** Distributor—automatic centrifugal and vacuum-type advance control, Octane Selector. Coil mounted on engine. 12 volt starting motor, operated by combined ignition and starter switch on instrument panel. Generator — 12 volt, 20 amps.

Cut-out relay. Voltage and current regulator. 14 mm. spark plugs. 12 volt 7 plate battery; mounted under engine hood. Headlamps. Parking lamps. Dimmer switch. Dome light with integral switch. Additional courtesy switches on Special operated by front doors. Tail, stop and licence plate lamps. Flashing-light warning system on Special Station Sedan. Single wind-tone horn.

**Transmission :** Three speed with Helical Gears. Synchromesh for second and high speeds. Gear shift lever on steering column. Ratios: 1st, 2.98 to 1; 2nd, 1.59 to 1; 3rd, direct; reverse, 2.98 to 1.

**Propeller Shaft :** Open type. Needle bearing universal joints.

**Wheelbase :** 105 ins. Overall length, 175 31/32 ins.; overall width, 66 29/32 ins.

**Clutch :** Diaphragm type spring, single plate, dry disc. Clutch hydraulically controlled.

**Cooling :** Cellular type radiator with pressure cap. Centrifugal water pump.

**Rear Axle :** Banjo construction, semi-floating; final drive hypoid pinion carried by two taper roller adjustable pinion bearings; differential and crown wheel assembly carried by two taper roller adjustable side bearings.

**Gear Ratio :** 3.888 to 1.

**Brakes :** Four wheel hydraulic, semi-floating type, internal expanding, articulated shoe type.

**Handbrake :** Operates mechanically on rear brakes.

**Wheels :** Demountable disc wheels, with drop centre rim integral with wheel — size, 13 x 4.50J.

**Tyres :** Tubeless low pressure balloon, 6.40 - 13 x 4 ply.

**Steering :** Recirculating ball type. Gear ratio, 14 to 1.

**Turning Circle :** 36 1/2 feet.

**Front Wheel Suspension :** Independent Coil Spring (short and long arm

type) assembled to front end frame as a complete unit.

**Rear Suspension :** Hotchkiss Drive with semi-elliptic springs — 48 in. long, 2 in. wide, 5 leaves. Tension shackles with rubber bushings.

**Shock Absorbers :** GMH Delco direct acting tubular telescopic shock absorbers front and rear.

**Body Structure :** All-steel "Aerobilt" turret-top body of five major sub-assemblies — all welded together to form a complete assembly. Alligator type engine hood. Counterbalanced hinges.

**Instrument Panel :** Indirectly lighted. Lighting switch with Rheostat for dimming instrument lamps. Combined ignition and starter switch; choke; speedometer; petrol gauge; water temperature, oil pressure and generator charging tell tale lamps; glove box with locking lid; windscreen wiper control; control knob for engine hood; cowl ventilator control knob; cigarette lighter on Special Station Sedan. Provision for radio installation.

**Equipment :** Dual windscreen wipers with vacuum booster and automatic blade parking. Bumpers with guards front and rear. Two sun visors, rear view mirror. Ash trays front and rear. Safety-glass windows and windscreen. Rubber mat in front and rear (black in Standard Station Sedan, colored in Special Station Sedan). P.V.C. covered jute on load compartment floor. Cowl ventilator, no-draught ventilators with locks. Seats fitted with "Z" type springs. Front seat fully adjustable fore and aft; by use of shims seat can also be adjusted up and down. Scuff plates. External key-operated door lock L.H. front door Standard Station Sedan. Key operates door locks both front doors on Special Station Sedan. Hold-open door checks all side doors. Equipment on Special Station Sedan: Exterior — two-tone colours; stainless steel belt moulding, windscreen moulding and roof drip gutter moulding; chrome licence plate guards; interior — door trims with chrome trim strips; front seat arm rests; cigarette lighter.

*Specifications and Equipment subject to change without notice. Convenient GMAC Hire Purchase is available.*

GENERAL MOTORS-HOLDEN'S LIMITED

BRISBANE · SYDNEY · MELBOURNE · ADELAIDE · PERTH

® Registered Trade Mark.

G.W.G.-30M-2/57