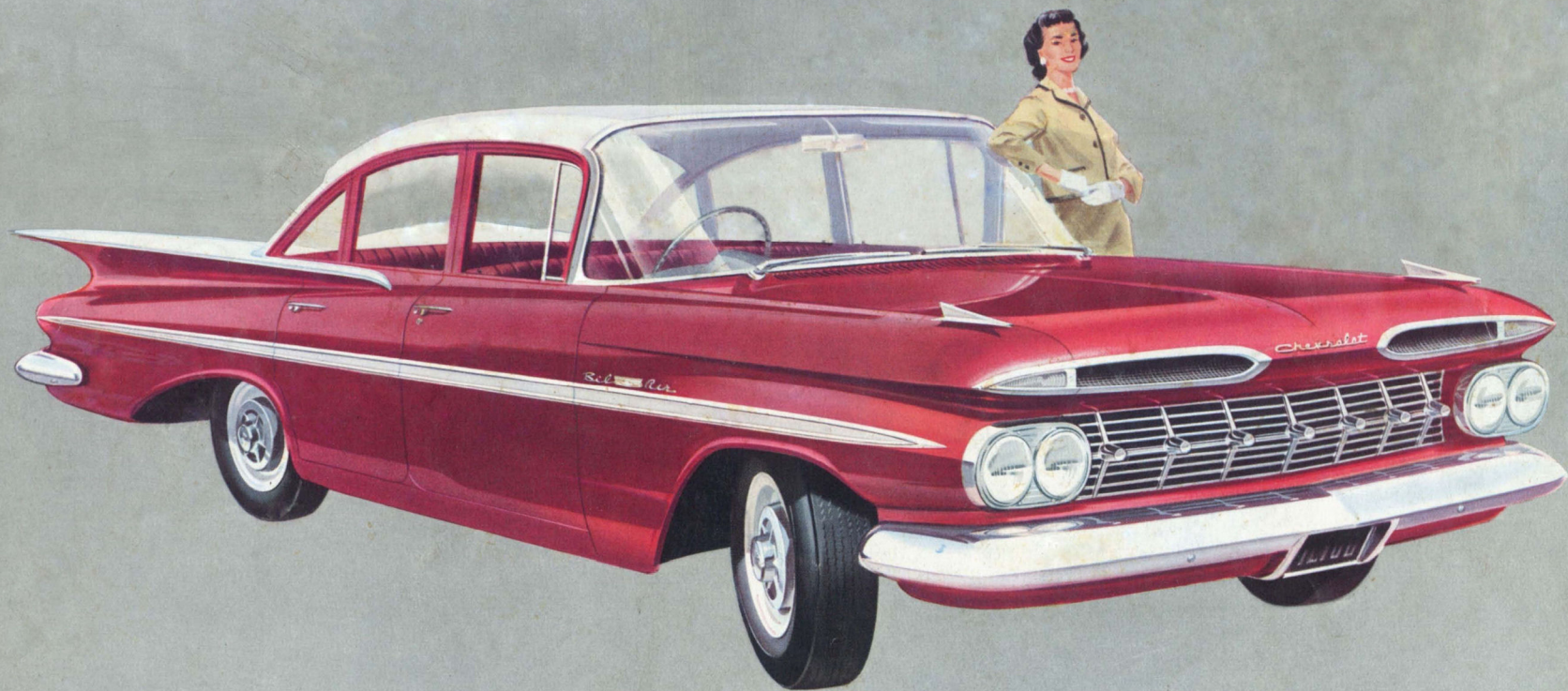


# THE ALL-NEW CHEVROLET





BOLD. NEW BEAUTY...AND POWERGLIDE AUTOMATIC TRANSMISSION, TOO

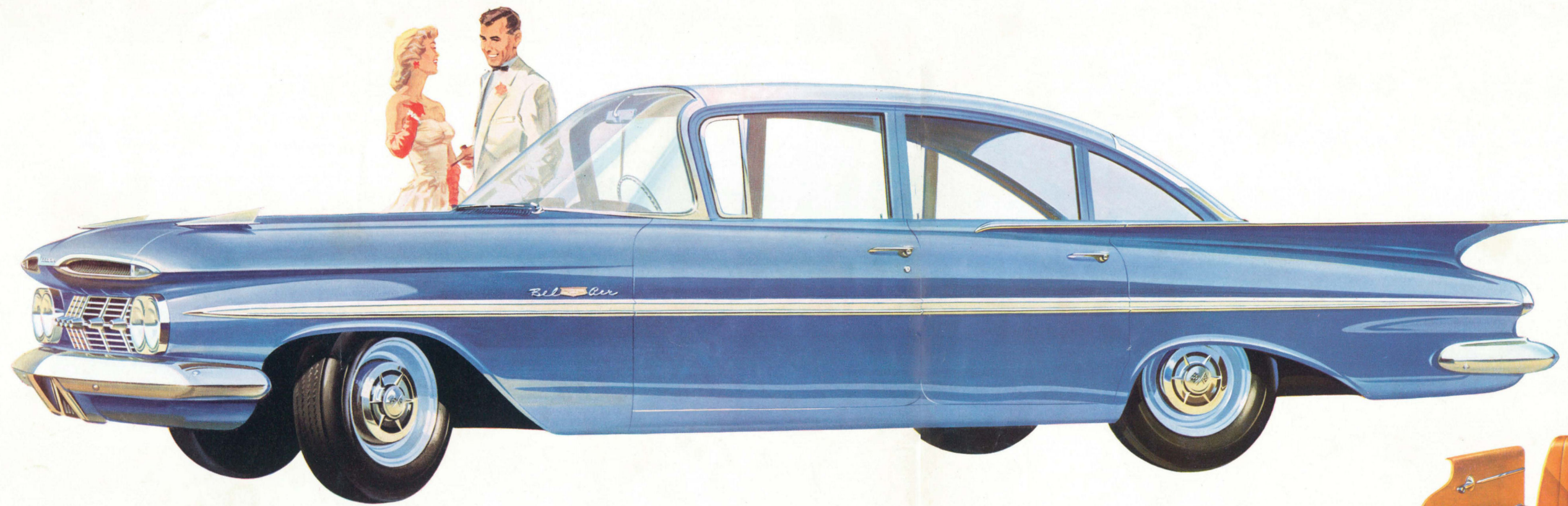


It's the beautiful new Chevrolet—with a slender, sculptured new Slimline body style that is all grace with no hint of bulk. Longer, lower in silhouette, but with actually over an inch more head room in the front seat. Wider, too, Chevrolet offers you four inches greater hip room in the front seat (66.1 ins. wide) and over two inches more in the back (65.5 ins. wide).

All round visibility has been increased dramatically by 34%—and the airy look of the upper structure with its thinner, shorter upper panel emphasizes the new Chevrolet looks of road-loving fleetness.

Matching the comfort of new fashion-crafted interior trims and the wonderful exterior styling features, magnificent mechanical advances play *their* part in a Chevrolet designed to be the greatest in a great line of motor cars. *Powerglide transmission is introduced as standard equipment in this new Chevrolet.* The famous Chevrolet Powerglide adds sensationally to Chevrolet driving ease, smoothness and safety, giving you true automatic transmission at its very best. Powerglide eliminates clutch and gear shift lever, cuts driving operations from fifteen to three, opens up a whole new world of motoring. In addition, new mechanical features add to economy, handling ease, steering, braking and durability. Chevrolet is beautiful, to be sure, with its breathtaking new design—but above all, Chevrolet is practical its whole length through.





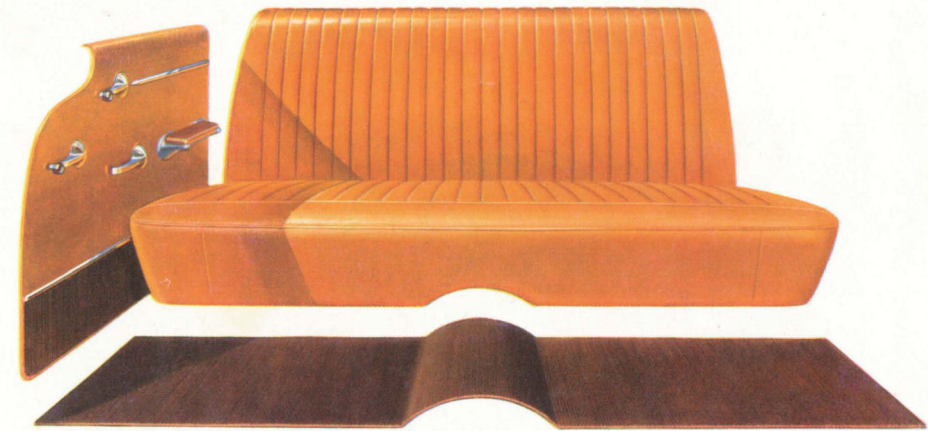
## LOWER. LONGER...ALTOGETHER A FRESH AND ORIGINAL CAR

Look right along this lower, longer Chevrolet — you see elegant lines of new beauty at every point. All the way from light and airy looking new top, down through the glamorous wind-spear running along the side right to the newly styled road wheels Chevrolet invites you to take to the road . . . and you know you'll drive Chevrolet with pride wherever you go.

And you'll drive with greater safety, too, for Chevrolet's new, lower body serves to reduce the height of the centre of gravity and this combined with increased wheelbase and wider track makes for even greater stability than before.

Then there's 28% more luggage space — 32 capacious cubic feet of clear load space to hold all the luggage you'll want to carry. Loading is easy through the wide, clear opening.

**FASHION-CRAFTED INTERIORS.** Open the door of the new Chevrolet—immediately you'll be conscious of elegance and spacious comfort . . . with high fashion as the keynote. Chevrolet interiors are the freshest settings for travel you ever relaxed in, with rich, single tone leather keyed to exterior colours. There's a new, more relaxed and comfortable driving position in the deeper seats, and the glamorous new instrument panel has been planned for your convenience, safety and comfort.



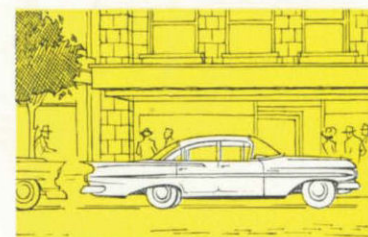


## POWERGLIDE AUTOMATIC TRANSMISSION . . .

SIMPLE. EASY. SAFE . . . AND UNBELIEVABLY SMOOTH



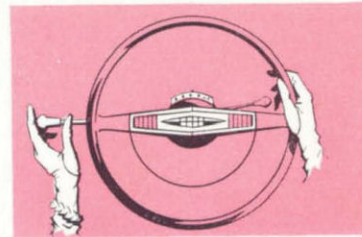
Powerglide is a wonderful new thrill that's been added to Chevrolet motoring joy. Dependable its whole life through, Powerglide automatic transmission is already proved by billions of miles, preferred by millions of American owners. You move away in one unbroken stride of power — Powerglide does away with "steps", because you have an **infinite** number of drive ratios, and the engine automatically selects the right one. You have only to start the engine, place the selector lever in "D", and press the accelerator for smooth, no gear-shift driving in city or country. For Powerglide keeps its automatic gear shifts a smooth, silent secret all the way from zero to top speed.



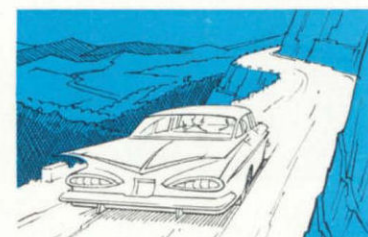
**PUSH-PROOF PARKING**  
Set the Pilot Control Lever in the "PARK" position and your car is rigidly locked. You can park with safety on the steepest grade without fear of your car rolling, or being pushed, out of position.



**AMAZING NEW "HILLABILITY"**  
With the engine automatically selecting the right drive ratio, you can take any hill you're likely to encounter easily, safely and without strain. You can even let the car roll backwards in "DRIVE" position without killing the engine.



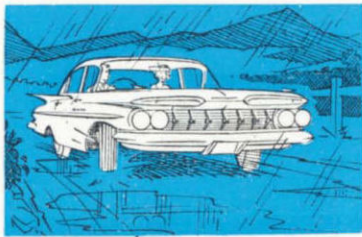
**FORWARD-REVERSE ROCKING**  
Flick the Pilot Control Lever back and forth between "LOW" and "REVERSE"—without even raising your foot from the accelerator—and you can rock right out of rough spots without strain or damage to engine or transmission.



**BRAKE-SAVING ENGINE HOLD-BACK**  
When decelerating or descending a hill, the engine helps to slow and stop the car . . . even in "DRIVE" position. Placing the lever in "LOW" multiplies this brake-saving engine hold-back.



**SMOOTH ACCELERATION**  
With Powerglide you move ahead so silently you hardly realise how swift the pick-up is! And if you need an extra burst of speed you only have to put your foot right down momentarily and Powerglide automatically shifts into "LOW" to give you a new surge of power.

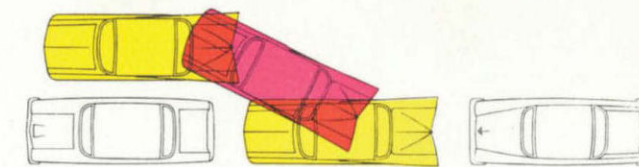
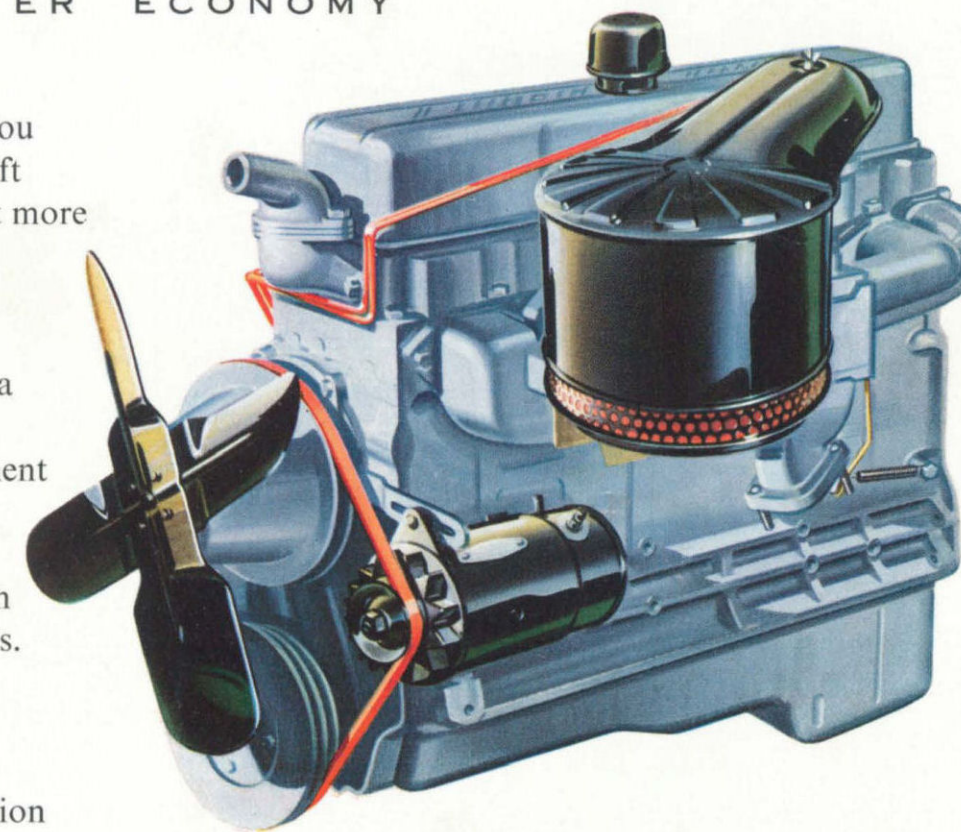


**SURE-FOOTED TRACTION IN MUD, OVER WET ROADS**  
You gain improved traction on any slippery road because the engine automatically selects the right drive ratio for every driving situation. Wheel spinning and skidding are minimized because no excess power is applied to wheels.

## NEW HI-THRIFT ENGINE . . .

FOR EVEN GREATER ECONOMY

You get power precisely the way you want it in the spirited new Hi-Thrift 6-cylinder engine . . . and you get it more economically, too. New camshafts and valve lifters have been incorporated, and these changes, with revised carburettion, add extra miles to every tank of fuel. Yet in spite of this 10 per cent. improvement in fuel economy, this brilliant new Chevrolet engine actually gives superior performance through increased torque at everyday speeds. Now radiator area is 387 square inches, giving greater capacity, and so lower engine temperatures which lead to more efficient operation and greater durability of engine.



Every mile you drive, every time you park, you'll praise the new steering and handling ease of Chevrolet. Recirculating ball-type steering makes handling Chevrolet easy in the tightest turns, and a new 24 to 1 steering ratio reduces steering effort under all conditions. A new flexible coupling insulates the steering wheel against road vibrations and shocks.



You'll find Chevrolet full four coil suspension is greater than ever, with flexible coils at each wheel giving full time cushioning on the roughest roads. Unlike ordinary leaf springs, the Chevrolet independent coils are completely isolated from all driving and braking forces, free for their only job—to smooth your ride into a glide in the lap of luxury.



You'll experience the comforting assurance of complete control with the new, larger than ever Chevrolet brakes, now with 28 per cent. more bonded lining area. New, wider drums are cooled in an air-stream to keep brake temperatures *down*, stopping force *up*—and new wheels are designed to act as brake-cooling fans.

## SPECIFICATIONS

**Engine Type:** 30.4 h.p. (R.A.C.) valve in head, six cylinders, 8.25 to 1 compression ratio, max. gross b.h.p. 135 at 4,000 r.p.m., cubic capacity 235.5 cu. ins., Bore and Stroke 3.56" x 3.94" max. gross torque 217 lb./ft. at 2,000-2,200 R.P.M.  
**Pistons:** Aluminium alloy.  
**Crankshaft:** Counter balanced. Harmonic balancer.  
**Oiling System:** Full and metered pressure.  
**Fuel System:** Down-draught carburettor with automatic choke, accelerating pump and fast idle mechanism. Oil bath air cleaner, silencer and flame arrester. Fuel mixture heated (Thermostatic Control). Tank capacity 16.06 imp. gallons.  
**Cooling System:** Capacity 13.74 imp. qts. Self adjusting permanently lubricated water pump with by-pass.  
**Electrical System:** Delco-Remy Ignition system, centrifugal and vacuum spark advance control. Ignition coil—high

intensity spark. Delco-Remy generator with voltage and current regulator, Delco-Remy starter, key turn starter switch.  
**Transmission:** Powerglide automatic transmission with hydraulic torque converter and planetary gear system for reverse and low. Drive positions selected with selector lever mounted on steering column. Five positions available (left to right on selector panel), Low, Drive, Neutral, Reverse, and Park.  
**Frame:** X-design in box-section girder.  
**Front Suspension:** Independent front wheel springing. Direct double acting hydraulic shock absorbers.  
**Rear Axle:** Semi-floating type with hypoid-drive gears of 3.36 to 1 ratio.  
**Rear Suspensions:** Direct double acting hydraulic shock absorbers. Independent coil springing with four point control linkage.  
**Drive System:** Hotchkiss drive. Two piece propeller shaft.  
**Brakes:** Four wheel self-energising hydraulic. Mechanical parking brake.

**Steering Gear:** Recirculating ball, fully adjustable. Ratios—Gears 24 to 1, Overall 28 to 1. Relay type linkage.  
**Wheels and Tyres:** Five—steel disc. 7.50—14 x 4 ply tubeless tyres on wide base rims.  
**Wheelbase:** 119 ins. Overall length 210.9 ins, width 79.9.  
**Lights and Horns:** Dual sealed beam headlamps. Parking lamps mounted above headlamps. Dual tail and stop lights. Rear licence plate lights. Dome light. Dual matched horns. Flashing turn signal lamps front and rear. Glove compartment light. Courtesy light switches operated by front doors.  
**Battery:** 12 volt, 9 plate, 50 amp. hr.  
**Instruments:** Speedometer, engine temperature and fuel gauges. Generator charge and oil pressure warning lamps. Variable indirect instrument cluster lighting.  
**Controls:** Illuminated 3 position ignition lock with key turn starting. Light switch, air intake, single control for single speed self parking dual electric windshield wipers.

**Exterior:** Chrome body side moulding. Curved panoramic windshield. Push button door handles. Same key operates front door locks, glove compartment lock and luggage compartment lock. Two tone colours available at no extra cost.  
**Interior:** Seat cushions and squabs upholstered in single tone leather. Combined foam rubber and plastic pad in both seat cushions. Carpet on front and rear floors. Individually controlled ventilators at either side of dash. Ventipanes on front doors, winder operated. Two extensible sun visors. Arm rests on all doors. Assist straps with coat hooks on rear roof rails. Cigarette lighter in instrument panel. Ash trays front and rear.  
Specifications and equipment subject to change without notice. Confidential hire purchase arrangements are available through GMAC, General Motors' own hire purchase company. Ask about the GMH warranty and protective owner service policy.  
**GENERAL MOTORS-HOLDEN'S LIMITED**



# *DRIVE CHEVROLET*

AND YOU'LL REALLY DRIVE FOR THE FIRST TIME

