

*Statesman*

What makes it different  
is what makes it better

## *The differences begin with...*

The all new Caprice model from General Motors- Holden's, which now joins the successful and upgraded Statesman de Ville. Luxury and distinction are the hallmarks of this very elegant car. It has a long, low, sleek, continental look. Its differences start with impressively distinguished front end styling. A highly distinctive grille and strong, protective rubber surfaced vertical bumper guards. The long, low line is perfectly proportioned. Statesman sits on a long 114" (2896mm) wheelbase and wide 5' (1524mm) track. This helps give an over-the-road ride that is stable in any conditions, excellent on the sharpest bends.

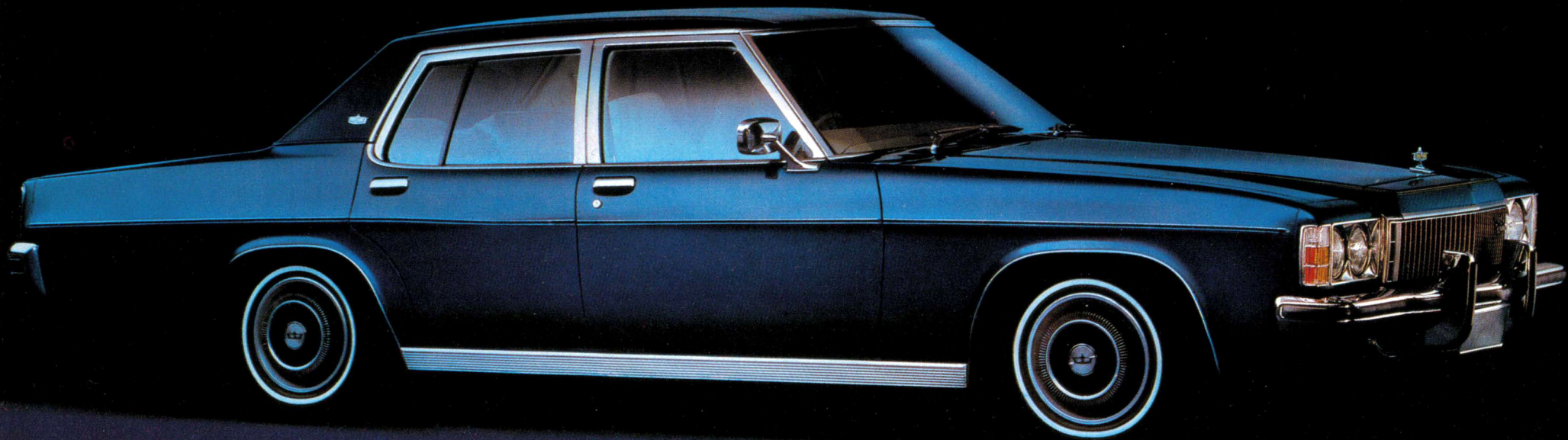
When you take Statesman out, you experience a driving sensation that is the result of years of planning in advanced engineering. The front chassis is a separate unit. Rubber cushioned, it isolates you from noise and vibration. The suspension is an improved version of the proven GMH 4-coil system. It holds the car body even, steady, while the wheels and coils absorb road surface bumps and noise. In Statesman you glide in the quiet comfort of a true, world class luxury car.

Forward-mounted steering gives predictable control. The steering is power assisted, with a variable ratio that makes it easier the further you turn the wheel, but which does not have the remote feel of conventional power steering. On the bonnet of Statesman Caprice is a safety spring-loaded prestige emblem. This emblem symbolises a car that will give you a feeling of pride every time you approach it.



STATESMAN  
*Caprice*

*Caprice*



# Statesman Caprice

You'll open the door to the atmosphere of leather.

Leather – the monopoly of cars of marque since motoring began. It's part of the sweet smell of success in your Statesman Caprice. Fully imported crack-resistant sewn hides dress the bucket seats.

The seats are in body-contoured full-foam, reclining to any position you choose. At the rear is a fully contoured bench seat with wide pull-down arm rest. There are passenger assist handles.

Caprice has courtesy lights and warning lights on every door. These light up when you open the doors, giving light at your feet and warning anyone behind that the door is open.

You get an eleven transistor radio and power aerial standard. There is deep pile carpet through the whole car – even in the boot! Caprice has a vinyl-clad roof.

All-round vision is at a maximum with Statesman's big windows and slim pillars. There's chrome just where it's needed to protect against weather, minor impacts and scratching. The tyres are special steel-belted radials, developed by GM to give all the benefits of radial tyres, but which do not have the harsh ride of normal radials.

Individually switched, directional rear reading lights.



Fully contoured rear seats with pull-down arm rest.

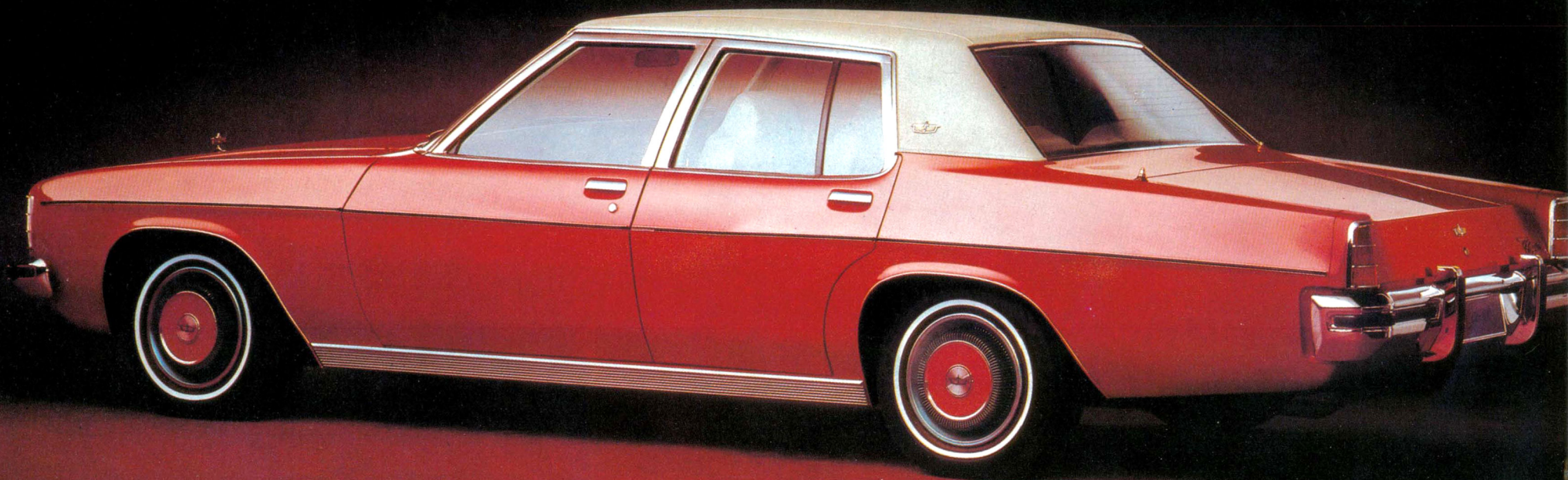


Courtesy and warning lights on every door.



Dressed in hand-sewn imported leather, the Statesman Caprice's full-foam and fully reclining front seats.





# Statesman Caprice

Think of air conditioning,  
electrically operated windows,  
digital clock.

Statesman Caprice creates its own  
climate with fully-integrated air  
conditioning.

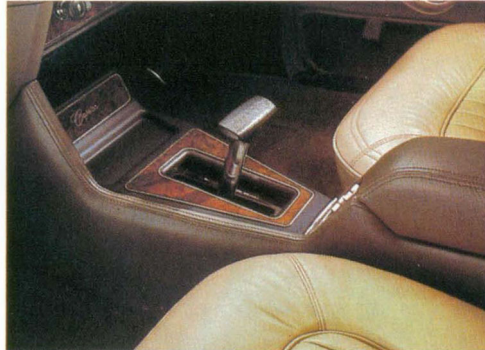
You open and close all windows  
with the touch of a button. And your  
time is clear in the exclusive digital  
clock mounted in the woodgrain  
dash. This is a unique feature in cars  
of this class.

In front, a tinted laminated  
windscreen. Behind you, an  
electrically heated rear window  
that de-mists or de-ices for safe  
vision. There are full-length arm rests  
on the doors.

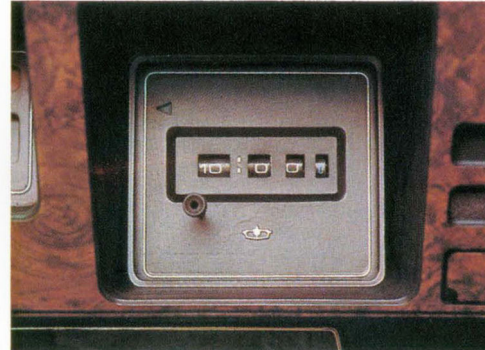
The integrated centre console  
between the front seats puts the  
window command buttons  
conveniently at your left hand. It  
also houses the T-bar automatic  
transmission, a storage compartment  
and cigar lighter for rear passengers.

There's a remote-control exterior  
rear vision mirror, map pockets on  
rear of front seats and the rear  
quarter reading lights have individual  
switches. So does the centre dome  
light, which also has individually  
switched high intensity beams to  
make reading easier for the driver  
and front passenger. Statesman  
Caprice makes you think again!

Caprice has a personal console with T-bar.



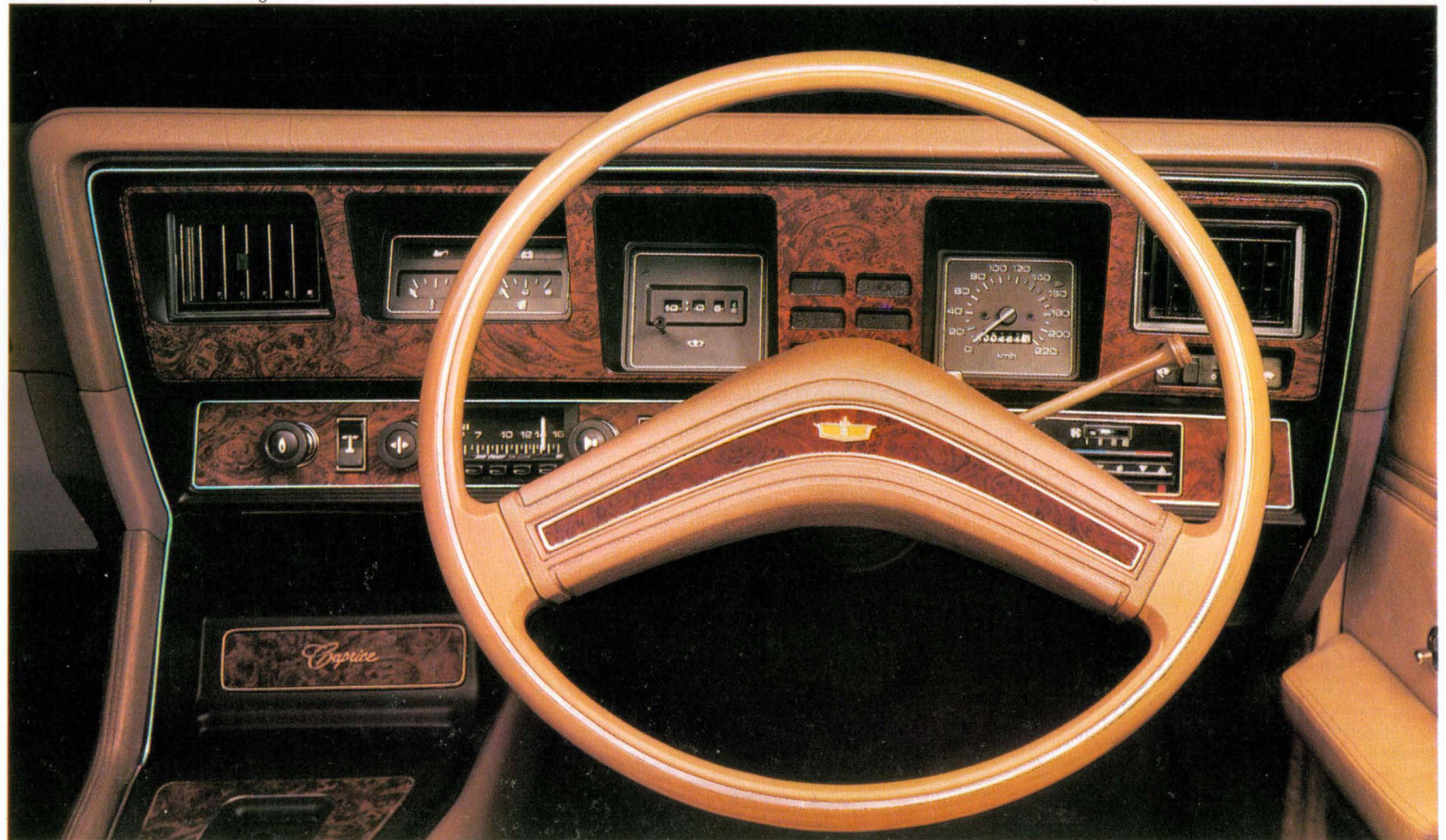
Statesman Caprice has an electric, digital clock.



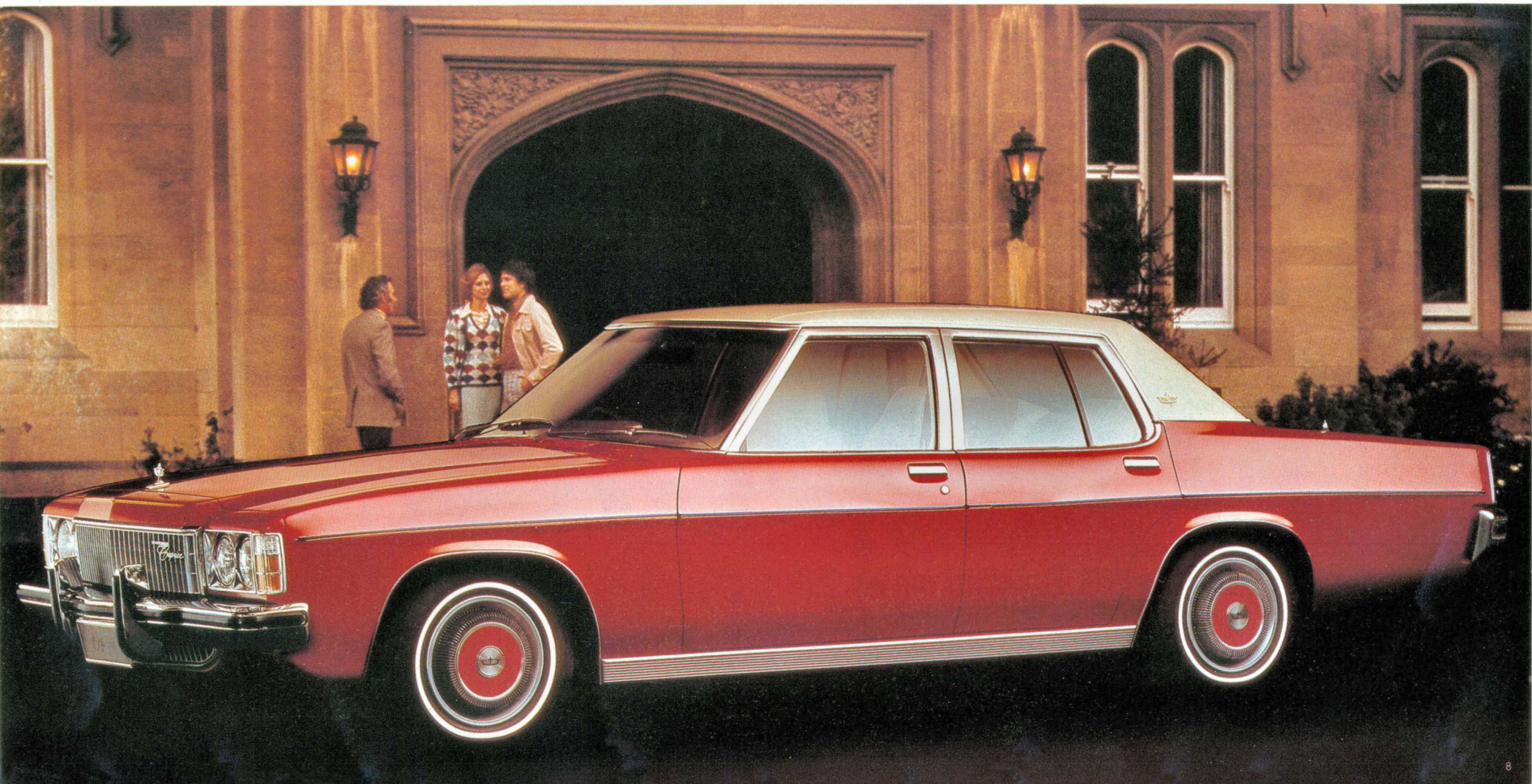
Fingertip electrical control of all windows.



Beautifully clear instrumentation is a feature  
of Statesman Caprice's woodgrain dash.



*Statesman Caprice*







...now think about *Statesman de Ville*



## Statesman de Ville

You'll appreciate  
these differences.

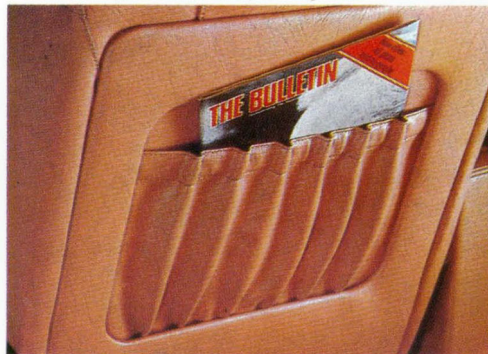
Statesman de Ville offers many differences of value beyond its price. Eleven-transistor radio and power aerial are standard.

The interior trim is Caribou leather-grained vinyl – or you can choose one of the exclusive Royal Cord cloths. The seat separator on the de Ville has a lift-up padded arm rest. Seats are body-moulded full-foam buckets that recline to any angle. The rear bench seat has a pull-down arm rest.

Outside you get a vinyl roof, sturdy full length rub strips along the waist, full wheel covers. There are inlaid protective rubber strips in the bumpers fore and aft. Remote-control rear vision mirror. The boot is fully carpeted. You'll appreciate the differences in Statesman de Ville.

Bumpers on Statesman de Ville and on the Caprice model are fitted clear of the bodywork. Minor damage is absorbed by the bumpers and brackets which means that panels and paint work are better protected.

Convenient pockets for maps, magazines.



Statesman de Ville's rear seat arm rest.

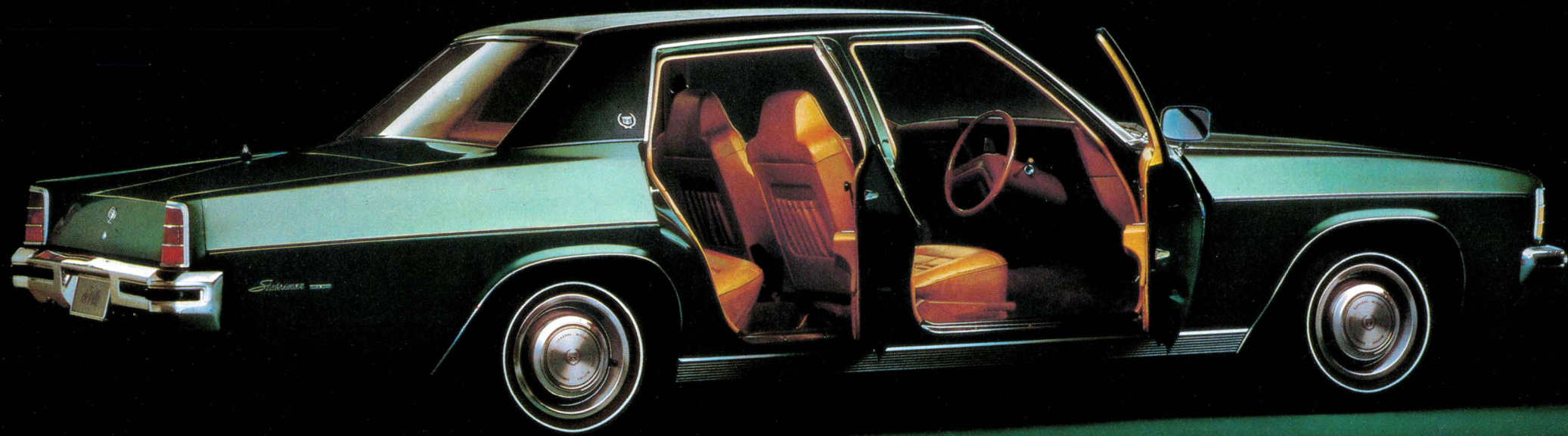


A capacious boot, fully carpeted.



Statesman de Ville full-foam, contoured fully reclining seats in Royal Cord upholstery. The optional T-bar floor shift is also shown.





# Statesman de Ville

Think of  
Turbo-Hydramatic transmission,  
powered ventilation,  
power steering.

Like Statesman Caprice, the de Ville is powered by a 240 bhp five litre V8 engine. It has been refined to make it more efficient, more economical.

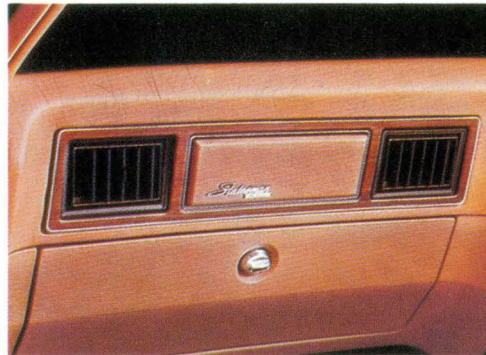
Front disc brakes are power assisted. Turbo-Hydramatic automatic transmission, with column shift and variable ratio power assisted steering are standard. The steering is forward-mounted to give more precise control in corners.

Statesman de Ville has all-steel wheels fitted with white wall tyres and distinctive chrome wheel trims.

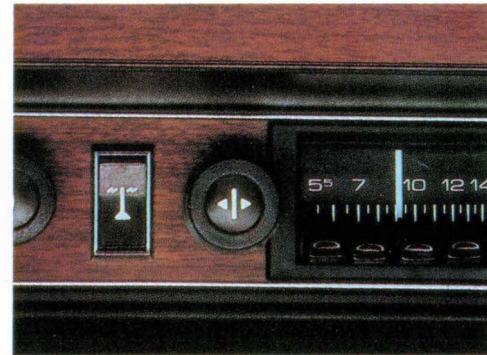
The fan-boosted flow-thru ventilation is standard – or you can choose full air conditioning.

The dashboard is in handsome woodgrain finish. The glove compartment has a vanity mirror and lighting that comes on automatically as you open it.

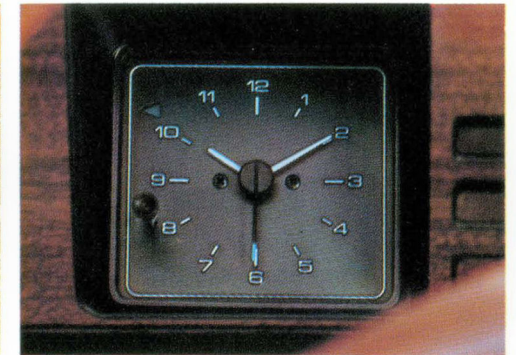
The de Ville has powered ventilation.



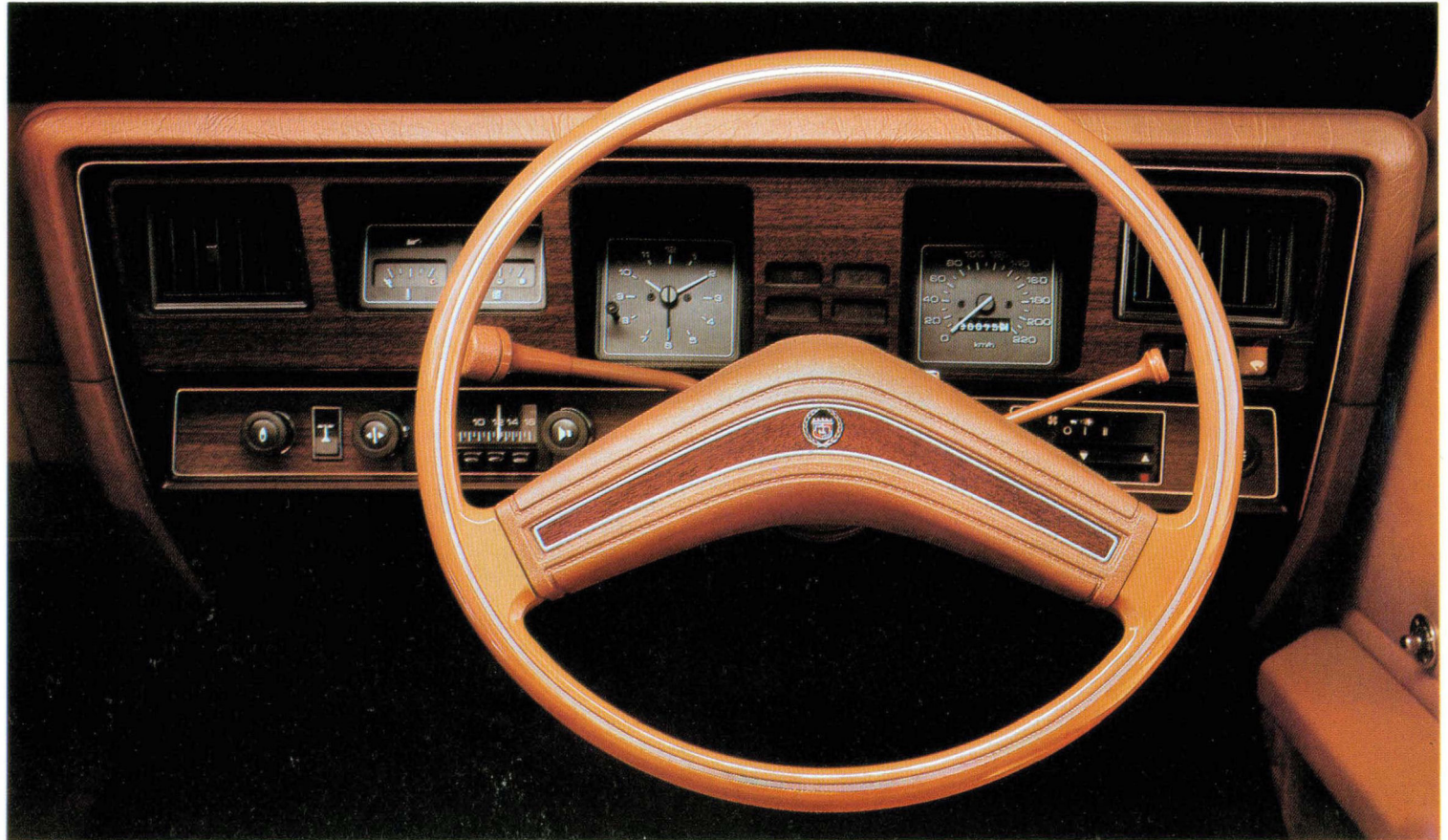
An eleven transistor radio is standard.



Statesman de Ville's electric clock.



Statesman de Ville's handsome dash has glare-reduced instrumentation.



# *To express your individuality*

Statesman Caprice is so superbly equipped that very few options are available for it. You can, however, have a cartridge stereo player (1) fitted in the personal console. You can also order a sliding sunroof — and this feature is available for Statesman de Ville, too.

The de Ville can be further "tailored" to suit your individual taste. Its options include:

2. Console floor shift.

On de Ville this popular, sporty T-bar automatic can replace the standard steering column shift.

3. Electric windows.

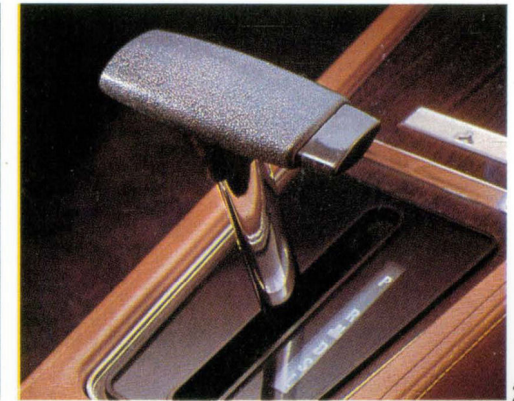
Driver has a master control for all windows — and each window has individual passenger control.

4. Radial tyres.

A wide range of radial tyres are available for Statesman.



1



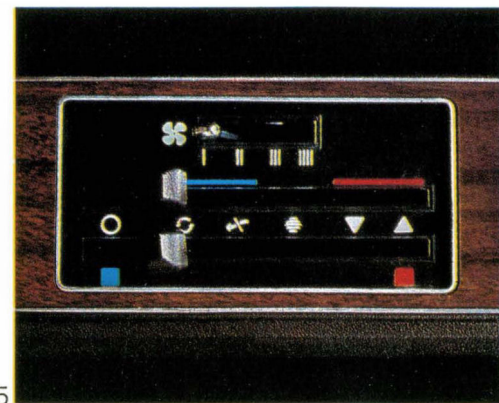
2



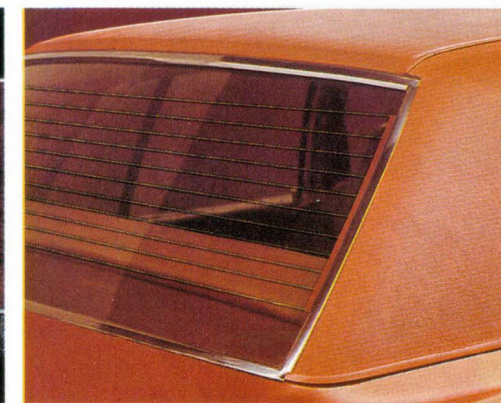
3



4



5



6

5. Full air conditioning.

The system not only heats and cools, it demists and dehumidifies.

6. Electrically heated rear window. Simply press the fingertip control for de-icing and clearing condensation.

# Statesman Caprice and de Ville

## ENGINE:

Both models:  
5047cc (308 cu. in.) V8. Oversquare design. Bore and stroke 4.000 x 3.062 ins. (101.6mm x 77.7mm). Develops 240 HP (190kW) @ 4,800 rpm and 315 lbs. ft. (427Nm) torque @ 3,000 rpm. Comp. ratio 9.7:1. RAC rating 51.2. OHV design with crossflow cylinder head. Rochester Quadrajets 4-barrel carburettor. Cable throttle control. Full pressure lubrication. Positive crankcase ventilation. Extremely compact design. Extensive use of aluminium components reduces weight. Features high thermal efficiency and rapid warm-up.

## TRANSMISSIONS:

Both models:  
Turbo-Hydramatic 3-speed. Fully automatic, torque convertor type with fixed stator. Convertor multiplies engine torque for increased driving thrust to drive wheels during acceleration in any gear.

## REAR AXLE:

Both models:  
Standard 2.78:1. Optional 3.08:1.

## WHEELS:

CAPRICE: 6.00 JJ x 14 all steel. Full wheel covers are standard.  
DE VILLE: 5.00 JJ x 14 all steel. De Ville has distinctive chrome wheel trims as standard equipment.

## TYRES:

DE VILLE: E.78S x 14-4-ply white wall.  
CAPRICE: FR78S x 14 steel belted radial ply tyres. A wide range of optional tyres are available on de Ville.

## BRAKES:

Both models:  
Four-wheel hydraulic with a dual circuit system for safety. Should one system fail, the other still operates, and a warning light appears on the instrument panel. Power-assisted front disc brakes 11" (279.4mm) in diameter and 1" (25.4mm) thick. Ventilated for increased cooling efficiency and longer pad life.

## SUSPENSION:

Front: Independent with short and long arms, coil springs, stabilizer bar. Rear: 4-link system with coil springs. Optional Superlift shock absorbers are available on both models to increase stability when towing or under maximum load.

## ELECTRICAL:

Both models:  
12-volt battery. 48 amp.; 35 amp. alternator. Fusible-link and thermal circuit interruptor are incorporated in the system for safety.

## VINYL ROOF:

Both models:  
Standard but may be deleted on de Ville when ordering.

## FUEL SYSTEM:

Both models:  
Tank capacity 16.0 imp. gallons (72.7 litres).

## STEERING:

Both models:  
Variable-ratio power steering is standard. Power assistance integral with steering box. Both models feature a combined ignition/steering lock to protect your Statesman against theft. A positive stop system helps prevent the steering wheel being inadvertently locked while the vehicle is in motion.

## DIMENSIONS:

CAPRICE: Overall length 204.0" (5182mm).  
DE VILLE: Overall length 203.1" (5159mm).  
Both models:  
Wheelbase: 114" (2896mm). Track 60.2" (1529mm).  
Overall height: 54.3" (1379mm) (at design load).  
Estimated kerb weight:  
CAPRICE: 3619 lbs. (1642 Kg).  
DE VILLE: 3385 lbs. (1535 Kg).

## INSTRUMENTATION:

Both models:  
Kilometre speedometer/odometer. Fuel and water temperature gauges, oil and generator warning lights, clock (digital type in Caprice). Combined brake failure/parking brake warning light.

## SAFETY FEATURES:

Both models:  
4-coil suspension system with forward-mounted steering for precise handling. Dual circuit braking . . . if one hydraulic circuit should lose its pressure, the other remains fully operational, while the brake warning light glows on the dash. GMH energy-absorbing steering column collapses under impact. Safety-padded dashboard. Thin-section front windshield pillars for safer forward vision. 2-speed wipers with articulated wiper arm on driver's side, 4-jet electric windscreen washers. Integrated front-seat head restraints. Padded steering wheel. Heater/demister. Seat belts for every passenger. Front seat belts are the retractable type. Power boosted flow-thru ventilation (in de Ville). Integrated air-conditioning and heated rear window (in Caprice). Shatterproof knock-out interior mirror. Glare reducing interiors. Anti-theft ignition steering lock. Outside glare-reduced rear vision mirror. Reversing lights. Self-adjusting brakes. "Modified Zone" windshield that retains vision in front of the driver should the glass shatter. Fusible-link wiring system virtually eliminates risk of electrical fires. Safety cargo barrier to prevent luggage entering car from trunk upon impact. Fuel tank and all fuel lines wholly outside body. Safety rims on all wheels.

## WARRANTY:

The GMH Warranty protects your Statesman for the first 12 months or 20,000 kilometres, whichever is first completed. The GMH Guardian Maintenance Plan also provides free inspection and adjustment by the selling GMH Dealer at the first 1500 kilometres and provides details of suggested labour times and recommended maintenance up to 5 years or 100,000 kilometres.

## CONFIDENTIAL TIME-PAYMENT:

General Motors Acceptance Corporation provides low-cost time payment or leasing facilities through General Motors Dealers everywhere.

## PLEASE NOTE:

As the Policy of General Motors-Holden's is one of continual product improvement, all specifications and equipment are subject to change without notice.



