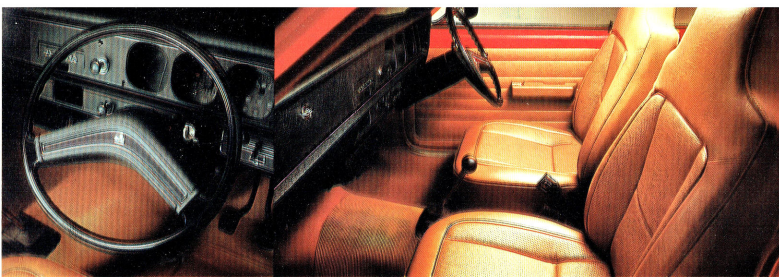


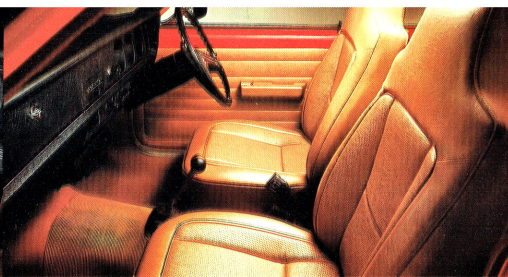


**ALL-NEW
HOLDEN
TORANA 1900**
'S'

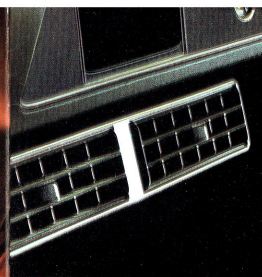
TAKE A SEAT—IT'S AN EYE OPENER.



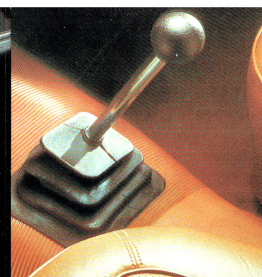
Safety padded steering wheel and recessed instruments.



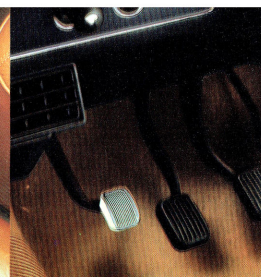
Full foam bucket seats with integral head restraints.



Two-speed fan boosted ventilation.



Smooth, short-throw gear shift.



Foot operated parking brake.

ALL-OUT FOR ENJOYMENT. RIGHT ON FOR ECONOMY.

Torana 1900 is the car everyone's been trying to build. A superb combination of comfort, performance and economy. That's why we call it 'The car for its time.'

Clean, sporty lines; generously proportioned windows, a low belt line and distinctive grille give it a highly individual sense of style. Behind the wheel... easy-to-drive, easy to handle, and for the busy world we live in, easy to park.

Neat and compact on the outside. Spacious and roomy on the inside. Per passenger, close to as much shoulder and hip room as any big car. You relax on full-foam European style bucket seats which curve and contour to fit your body and adjust to any position you care to recline in.

Seat surrounds and sides are upholstered in soft, supple leathergrain vinyl, with textured non-slip inserts.

Facing you, easy-to-read recessed instruments and low-profile controls with international function symbols. At your fingertips, 2-speed fan-boosted ventilation brings

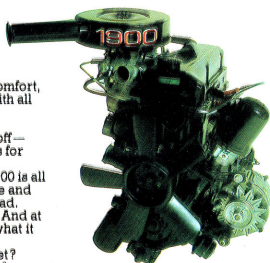
in fresh outside air for inside comfort, even when you're stationary with all the windows closed.

At your feet, a foot-operated parking brake. Zip it on. Zip it off—very convenient. Today's ideas for today's car.

But driving is what Torana 1900 is all about. Its unique balance of size and performance puts you way ahead. At the lights, in the parking lot. And at the service station. You'll like what it does with a gallon of petrol.

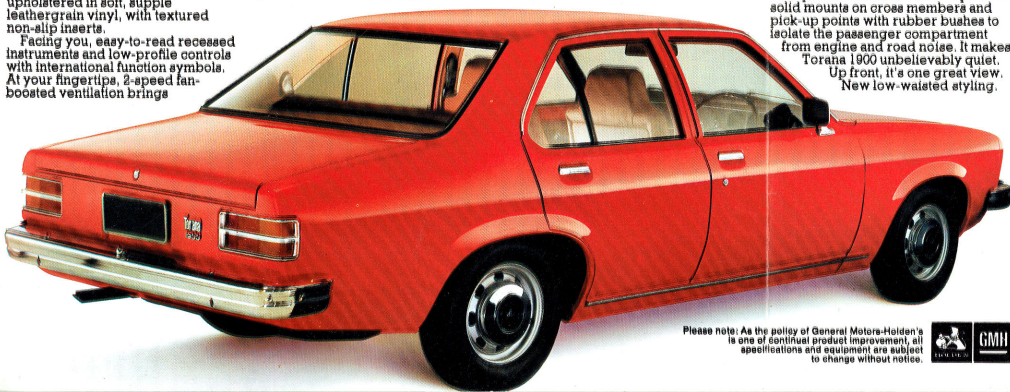
What's it got under the bonnet? Well, turn on Torana's 1,897 cm³ 4-cylinder German Opel engine and you turn on 102 economical horses.

This is the engine proved in 1.2 million German cars. Reliable. Economical. Cam-in-head for extra efficiency, particularly in miles per gallon.



The 1.9 litre 4-cyl. cam-in-head German Opel engine.

A superb balance of performance and economy: 1,897 cm³ develops 102 horses at 6400 r.p.m. Comp. ratio: 8.7:1. 9-barrel sole air carb. With automatic choke. Bore and stroke: 3.06 in. x 2.76 in. (63.0 mm x 69.8 mm)



Please note: As the policy of General Motors-Holden's is one of continual product improvement, all specifications and equipment are subject to change without notice.

TORANA 1900 POWER TRAIN CHART

	Standard	Optional
Transmission	4-speed manual with floor change shift	3-speed Tri-matic with T-bar floor shift
Engine	4-cylinder, 1,897 cm ³	—
Axle Ratio	Manual 3.80:1 Tri-matic 3.68:1	Perf. opt. 3.80:1
Brakes	Drums	10" (254 mm) front discs, rear drums

The power is converted by a smooth, short throw, four speed gear box. It's a gear box that maximises the power and fuel efficiency of this engine. The shift stick is floor mounted. Rully-tuned Torana handling begins with a new, wider 85" track and precise rack and pinion steering.

Four-coil suspension has increased vertical travel for a big car ride and better handling.

A quieter ride too. We've replaced solid mounts on cross members and pick-up points with rubber bushes to isolate the passenger compartment from engine and road noise. It makes Torana 1900 unbelievably quiet.

Up front, it's one great view. New low-waisted styling.

Smooth one-piece windows. Super slim pillars. No disturbing side vents. You see it all—all around.

Safety is built into Torana. Not just tacked on. New, stronger bumper bars, front and rear. Dual circuit braking system. A steel cargo barrier between boot and passenger compartment. GM's energy-absorbing steering column. The list goes on and on. So you go on and on in safety.

Deciding on Torana 1900 'S' makes a lot of sense. Because it's the one car that does more to answer the complex needs of today.

Next, it's a Holden. Built in Australia. Built strong. Built right. Dependable. Reliable.

Reasons why it will be a better investment today, and when it's time to sell.

GMH 12/20 warranty: Your Torana 1900 is fully protected for 12 months or 20,000 kilometres. And it's backed by the biggest and best dealer network in the country. Service and parts are always readily available.

The right car. The right back up. The right time to talk to your Holden Dealer. Take a test-run and find out for yourself why we call Torana 1900 —the car for its time.



Full-foam back and cushion. Shaped for correct shoulder, back and hip support. Fully reclining.

ALL-NEW HOLDEN TORANA 1900
The car for its time

Estimate your all-new Holden Torana 1900 S

Price of model selected..... \$

Options you may want:

Total of model and options..... \$

Trade-in value of present Car..... \$

Difference..... \$