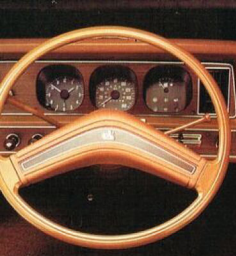


THE SHAPE OF TODAY.

**QUICK-SIZE
HOLDEN
TORANA 6/v8
'SL'**

Royal Cord Cloth seat inserts shown are an option at extra cost.



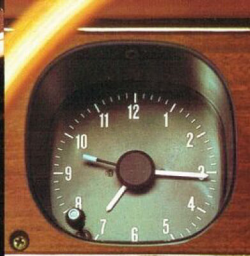
Woodgrain padded steering wheel. Woodgrain dash. (Radio illustrated is an option extra cost.)



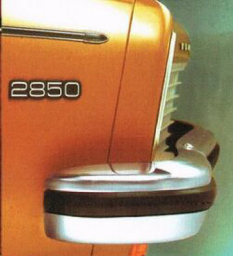
Full foam bucket seats with integral head restraints and a high rise armrest. (T-bar auto. illustrated is an option extra cost.)



2-speed fan-boosted ventilation



Clock with sweep second hand.



Rubber bumper inserts.

TORANA SL. IT COULDN'T HAVE HAPPENED AT A BETTER TIME.

It's no secret that a lot of Australians have revised their ideas about what they want in a car today. So it couldn't be a surprise that the people who build the Australian machine listened, and came up with the right answer.

A car that's easy to drive, easy to handle, easy to park.

Neat and compact on the outside, spacious, roomy and luxurious on the inside. For passenger, close to as much hip and shoulder room as some bigger cars.

And superbly comfortable.

You relax in full foam bucket seats curved and contoured to fit your body, that recline to any position you care to relax in. Seat surrounds and sides re upholstered in soft, supple Sadlonathergrain vinyl.

Facing you, recessed instruments and clock in a handsome woodgrain dash. Padded low profile controls feature international symbols.

A spacious lock-up glove box with an automatic courtesy light and

woodgrain door panelling and armrests with integral door handles. Luxury loop pile carpet covers the floor. Passenger grab handles for cross country driving.

The long list of goodies continues with a foot-operated parking brake. Very convenient.

Outside: Distinctive full-length side protector strips. Full wheel covers. Everything is go.

Turn on Torana SL's '2850' 6-cylinder engine and you turn on 105 horses. Big car power. Power to tow.

Power to go. Torana's unique balance of size and performance puts you way ahead. At the lights. On the freeway. If you prefer, you can order Holden's popular '3300' engine.

TORANA POWER TRAIN CHART

	Standard	Optional
Transmission	3-speed manual 4-speed manual change	3-speed Tri-matic column or T-bar floor shift 4-speed manual floor change
Engine	'2850' 6-cylinder	'3300' 6-cylinder or 4.2 litre V8
Axle Ratio		
'2850' 6 cyl:		
Manual	3.36:1	—
Tri-matic	2.78:1	Perf. opt. 3.36:1
'3300' 6 cyl:		
Manual	3.08:1	Perf. opt. 3.36:1
Tri-matic	2.78:1	Perf. opt. 3.36:1
4.2 litre V8:		
Manual	3.08:1	—
Tri-matic	2.78:1	—
Brakes		
10" (254 mm)	front discs, rear drums	

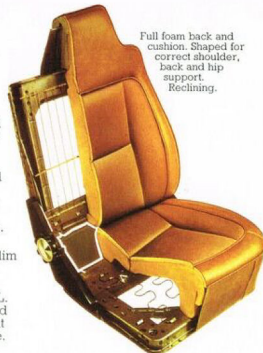
Power is converted by a smooth 3-on-the-column all-synchro change, or the popular Tri-matic 3-speed automatic. And matched by 10" (254 mm) disc brakes.

In this improved Torana, rally tuned handling begins with a wide, 55" (1397 mm) track and precise rack and pinion steering. Four-coil suspension has increased vertical travel for a smooth, big-car ride.

A quieter ride too. We've replaced solid mounts on cross members and pick-up points with rubber bushes to isolate the passenger compartment from engine noise and road vibration.

Low-weighted 4-door styling. Smooth one-piece windows. Super-slim pillars. No disturbing side vents. You see more—all round.

Safety is built into every Torana SL. Like stronger bumper bars, front and rear. With rubber bumper strips that absorb small bumps without damage. Big glare reducing mirrors. Dual circuit braking system. A steel



Full foam back and cushion. Shaped for correct shoulder, back and hip support. Reclining.

Deciding on Torana SL is a pretty easy decision.

Because it's one car designed around your ideas and needs.

Next, it's a Holden. Built in Australia for Australian conditions. Built strong. Built right. Dependable. Reasons why it will be a better investment today, and when it's time to sell.

GMH 12/20 warranty. Your Torana SL is protected for 12 months or 20,000 kilometres. And it's backed by the biggest dealer network in the country. Service and parts are widely available.

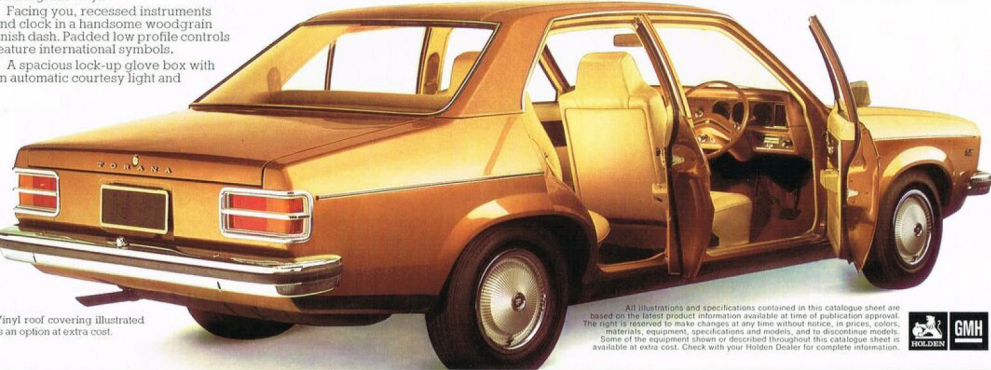
Torana SL has a lot more going for you. So why not talk to your Holden Dealer. And find out for yourself why we call Torana SL—"Quick-size".

QUICK-SIZE HOLDEN TORANA 6/v8

cargo barrier between boot and passenger compartment.

Retracting belts on front seats.

And that's just part of the very extensive GMH safety package in Torana.



vinyl floor covering illustrated is an option at extra cost.

All illustrations and specifications contained in this catalogue sheet are based on the latest product information available at time of publication approval. The right is reserved to make changes at any time without notice, in price, colors, materials, equipment, specifications and models, and to discontinue models. Some of the equipment shown or described throughout this catalogue sheet is available at extra cost. Check with your Holden Dealer for complete information.



Estimate your Holden Torana 6/v8

Price of model selected \$

Options you may want:

.....

.....

.....

.....

.....

.....

.....

.....

.....

.....

.....

.....

.....