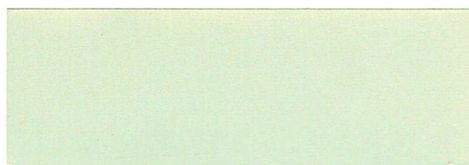


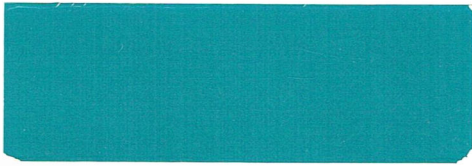
ABSINTH YELLOW



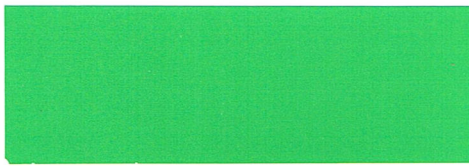
CHAMOIS



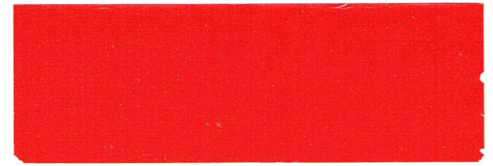
DURHAM BEIGE



AQUARIUS



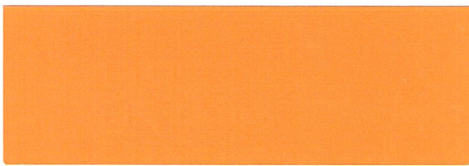
MINT JULEP



MANDARIN RED



COTILLION WHITE



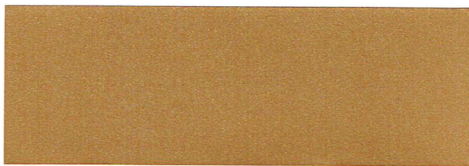
PAPAYA



TUXEDO BLACK



DEAUVILLE BLUE



CONTESSA GOLD



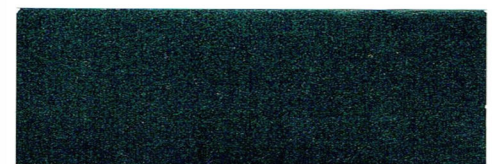
ROYAL PLUM



ANTELOPE



BORDEAUX



JADE GREEN



SIERRA TAN



PERSIAN SAND

REFERENCE SHOULD BE MADE TO
THE CHART OVER FOR COLOURS
AVAILABLE ON EACH MODEL

EXTERIOR COLOURS

HOLDEN COLOUR CARD

HOLDEN'S EXCLUSIVE RUSTGARD STORY

HOLDEN'S 'RUSTGARD' PROCESS PROTECTS YOUR INVESTMENT!

'Rustgard' is a series of proven anti-rust treatments applied to all Holden, Torana and Gemini bodies during manufacture. Firstly, applications of zinc-rich primer go on key panel areas at the sheet metal stage even before assembly begins. In many cases, panels are assembled and welded together while the primer is still wet. The assembled body then gets a thorough degreasing, a hot zinc phosphate spray and oven dry. It is then dipped in primer for complete underbody protection. Next comes grey corrosion-resistant primer. Then red oxide surfacer to provide a perfect base for the final paintwork. Critical inner panel surfaces are then sprayed with a special anti-rust coating for additional anti-corrosion protection. To complete the process, spray-on deadener is applied to the underside of all fenders and wheelbase panels. The entire body is then thoroughly sanded before and between each of 3 coats of 'Magic-Mirror' acrylic lacquer. This special Distortion Resistant Lacquer is designed to prevent damage and distortion to your paintwork by dirt and corrosion or water-spotting. This results in your Holden looking brighter for much longer, and also being easier to clean.

'DUR-NI' KEEPS CHROMEWORK GLEAMING NEW!

The 'Dur-Ni' process (short for Durable Nickel) substantially increases corrosion resistance in excess of the best quality Nickel plating previously available.

The 'Dur-Ni' process is a special Nickel plating process used by GMH at their plating plant in Woodville, South Australia.

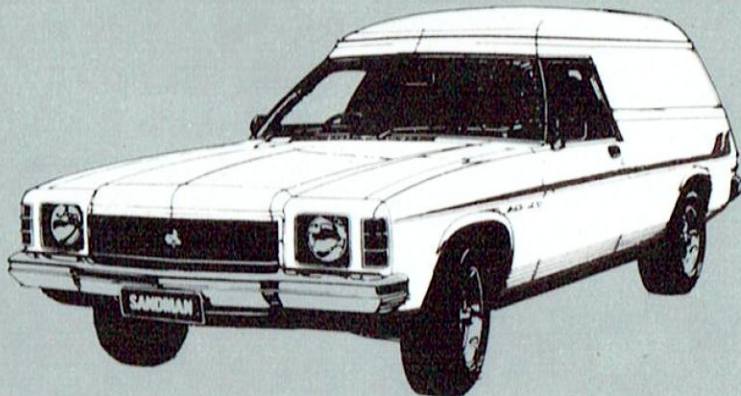
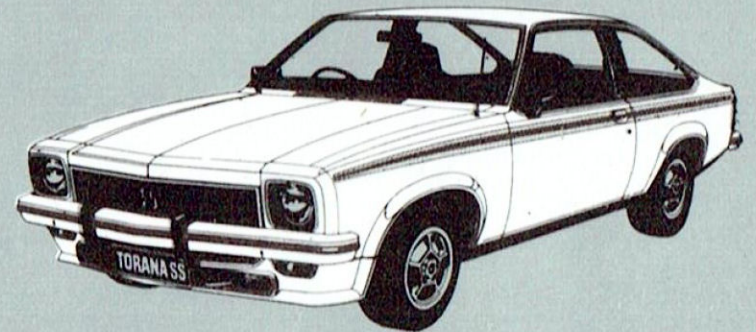
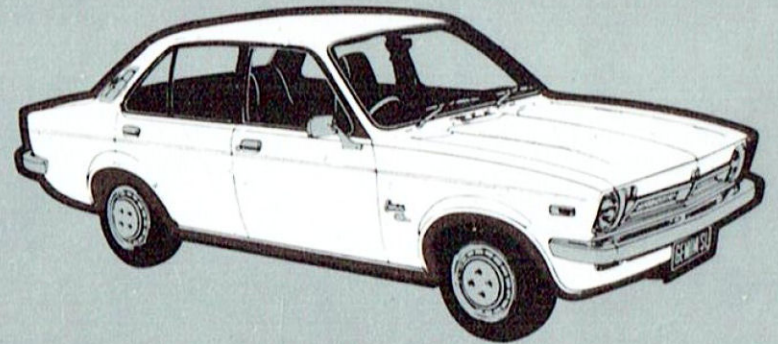
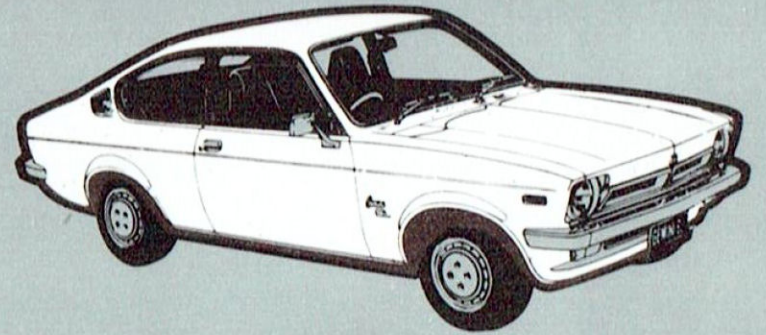
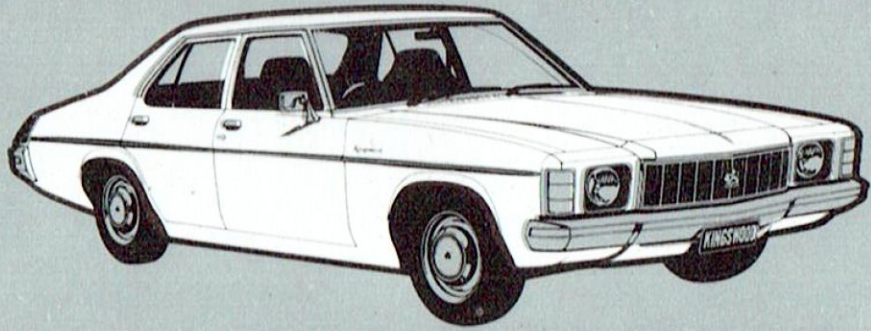
HIGH RE-SALE VALUE

Nothing keeps a car looking new longer, or preserves its value better, than a gleaming, rust-free body and sparkling bright chromework. Holden's exclusive 'Rustgard', Distortion Resistant Lacquer, and 'Dur-Ni' process provides a great starting point. Regular cleaning and an occasional polish, plus sensible maintenance as set out in the car's owner manual, will give you a car you can always be proud of.

LEGEND: S = STANDARD O = EXTRA COST OPTION — = NOT AVAILABLE	SOLID COLOUR									METALLIC COLOUR							
	ABSINTH YELLOW	CHAMOIS	DURHAM BEIGE	AQUARIUS	MINT JULEP	MANDARIN RED	COTILLION WHITE	PAPAYA	TUXEDO BLACK	DEAUVILLE BLUE	CONTESSA GOLD	ANTELOPE	BORDEAUX	ROYAL PLUM	SIERRA TAN	PERSIAN SAND	JADE GREEN
HOLDEN:																	
BELMONT	S	S	S	S	S	S	S	—	S	—	—	—	—	—	—	—	—
KINGSWOOD	S	S	S	S	S	S	S	—	S	O	O	O	O	O	O	O	O
PREMIER	S	S	S	S	S	S	S	—	S	S	S	S	S	S	S	S	S
MONARO GTS	S	S	S	S	S	S	S	—	S	S	S	S	S	S	S	S	S
LIGHT COMMERCIAL <small>*N.A. CAB CHASSIS</small>	S	S	S	S	S	S	S	S*	S	—	—	—	—	—	—	—	—
KINGSWOOD UTE. & VAN	S	S	S	S	S	S	S	S	S	O	O	O	O	O	O	O	O
HOLDEN SANDMAN	S	S	S	S	S	S	S	S	S	O	O	O	O	O	O	O	O
GEMINI:																	
SL SEDAN	S	S	—	S	S	S	S	S	S	—	S	S	—	S	—	S	—
SL COUPE	S	S	—	S	S	S	S	S	S	—	S	S	—	S	—	S	—
SEDAN	S	S	—	S	S	S	S	S	S	—	—	—	—	—	—	—	—
TORANA:																	
S SEDAN	S	S	—	S	S	S	S	S	S	—	O	O	—	O	—	O	—
SL SEDAN/HATCHBACK	S	S	—	S	S	S	S	S	S	—	S	S	—	S	—	S	—
SLR SEDAN	S	S	—	S	S	S	S	S	S	—	S	S	—	S	—	S	—
SS HATCHBACK	S	S	—	S	S	S	S	S	S	—	S	S	—	S	—	S	—

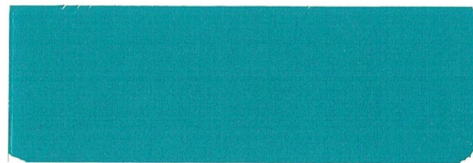


PLEASE REMOVE AND PLACE OVER APPLICABLE COLOUR





ABSINTH YELLOW



AQUARIUS



COTILLION WHITE



DEAUVILLE BLUE



ANTELOPE



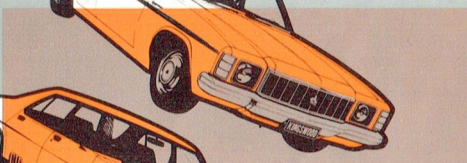
SIERRA TAN



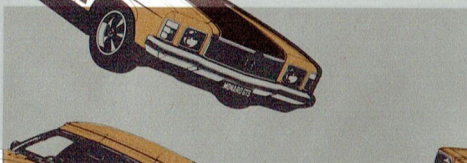
DURHAM BEIGE



MANDARIN RED



TUXEDO BLACK



ROYAL PLUM



JADE GREEN



PERSIAN SAND



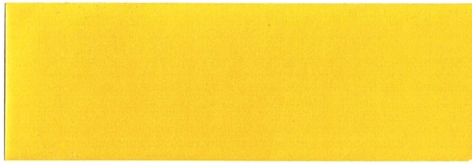
REFERENCE SHOULD BE MADE TO
THE CHART OVER FOR COLOURS
AVAILABLE ON EACH MODEL

EXTERIOR COLOURS

HOLDEN

EFFECTIVE JULY 1976





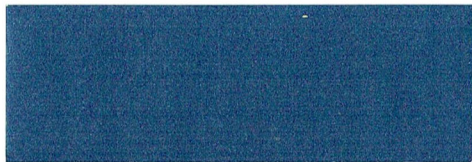
ABSINTH YELLOW



AQUARIUS



COTILLION WHITE



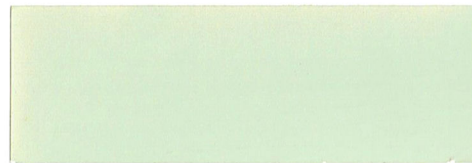
DEAUVILLE BLUE



ANTELOPE



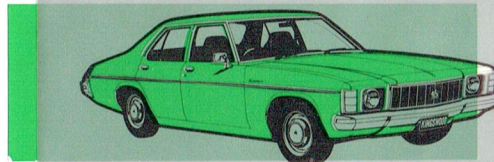
SIERRA TAN



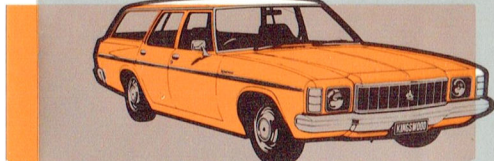
CHAMOIS

PLEASE REMOVE AND PLACE OVER

APPLICABLE COLOUR DURHAM BEIGE



MINT JULEP



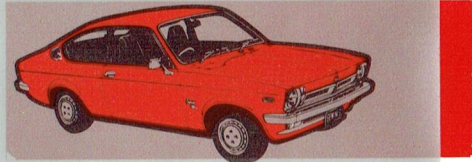
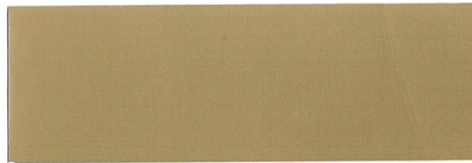
DURHAM BEIGE



PAPAYA



BORDEAUX



MANDARIN RED



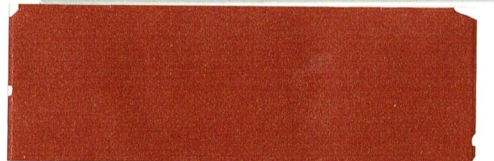
TUXEDO BLACK



ROYAL PLUM



JADE GREEN



PERSIAN SAND

REFERENCE SHOULD BE MADE TO THE CHART OVER FOR COLOURS AVAILABLE ON EACH MODEL

EXTERIOR COLOURS

HOLDEN

EFFECTIVE JULY 1976

