

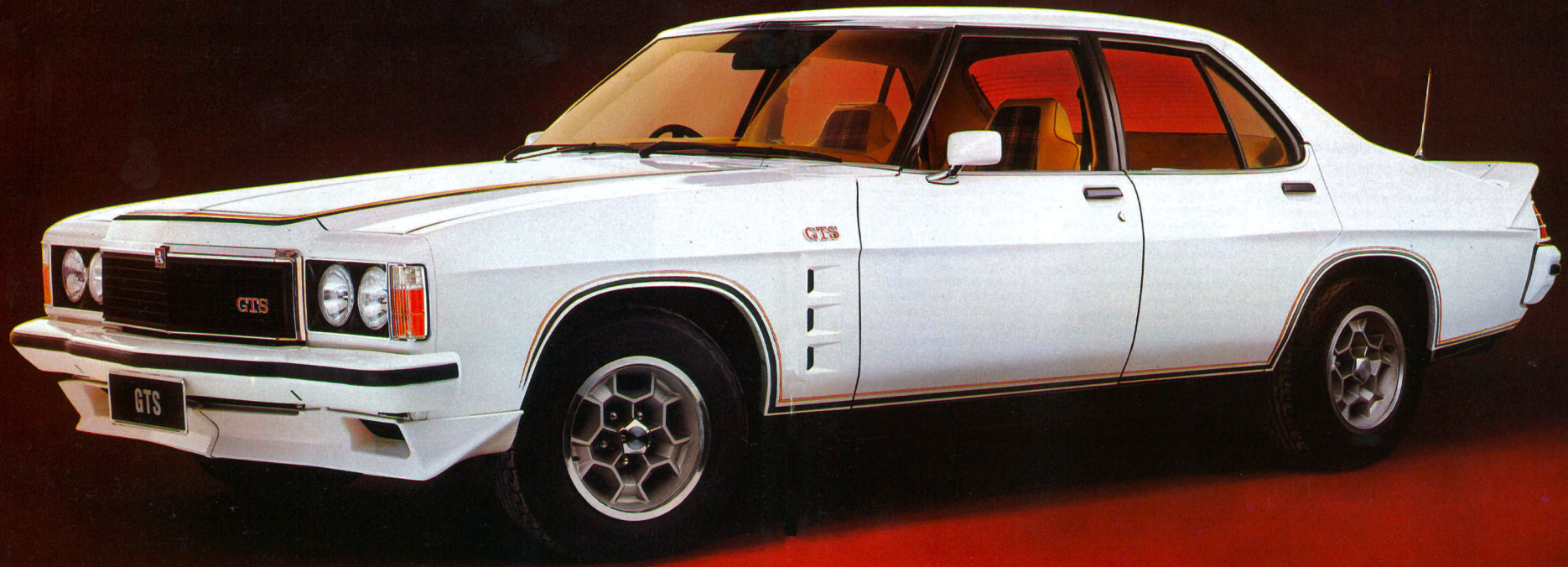
# GTS WITH RTS



Put more drive in your driving.

# GTS.

GTS shown with optional 7.00JJ polycast wheels, sports striping and cloth trim seats.



Holden GTS. Australia's only true four-door sports Sedan. Now with the fantastic handling of RTS and the backing of service and spares from over 500 Dealers from coast to coast.

The newest GTS is as impressive underneath as it is on top.



With road-straightening, precise-handling Radial Tuned Suspension. With the growl of a hill-flattening 4.2 litre V8 with dual exhausts. With the sure-footed stopping of big 4-wheel power disc brakes. With the grab of ER70H14 steel-belted radials on 6-inch wide rally wheels. Then there's the swifter shifting of the all-synchro 4-speed floor shift. The instant feedback of full instrumentation. The comfort and support of the high-backed buckets. The flash and function of



the GTS exterior with its front and rear air dams. And the bright-eyed visibility of four quartz halogen headlamps. And on, and on, and on.

But don't just take our word for it. Get your hands on a GTS with RTS. Then go put it through its paces.

You'll see we're not kidding around.



Remember the first time you saw a GTS? How it looked? How you felt?

Remember the first time you got a ride in a GTS? And remember (if you were really lucky) the first time you actually got to drive one and discovered what performance was all about. Well, that old magic is still there. Only newer. And much, much better. Just looking at it, you know



this one's something special. From the bold black grille, to the four quartz halogen headlamps (the inboard ones have long-range driving type "pencil beams"), to the GTS rally wheels, all the way back to the crisp deck lid panel and the custom chrome and black styling accents.

Inside, more special treatment. Revised instrument graphics and pointers. Reclining full-foam buckets up front. A fold-down centre armrest in back when you



order optional cloth trim. Console/armrest/storage compartment. Sports steering wheel. Four-speed shifter. Push-button radio. Electric clock. Trip odometer. And last (but far from least) Radial Tuned Suspension and GTS I.D. to let them know that you're in command of one of the finest handling, best performing cars ever.



Optional cloth trim seats and T-bar automatic.

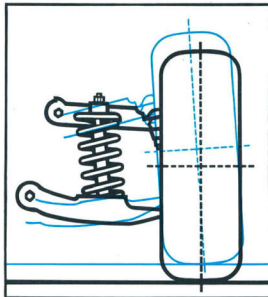
# GTS with RTS.



Radial Tuned Suspension is the road-ready result of advanced engineering development and computer-calculated technology.

RTS is designed from the road up around ER70H14 steel-belted radial ply tyres mounted on 6.00JX 14 rims. This combination of higher lateral tyre stiffness and wide track gives you greatly improved handling and greatly increased tyre mileage. But that's just the beginning. The front and rear stabiliser bars have been beefed up for less body roll, optimum roll couple distribution and improved handling. The decoupled rear stabiliser bar reduces impact harshness, transmission noise, and compliance steer.

RTS also features specially rated front and rear springs with "tuned" shockers to improve road holding and road comfort, while reducing



Front suspension is computer-designed to keep optimum tyre tread on the road while cornering.

fade. Special shock absorber attachments have been added to improve road holding, and reduce noise transmittance. There's a larger front suspension compression bumper to improve dynamic ground clearance and prevent metal to metal bump through.

The front upper control arm bracket has been relocated for more constant roll steer, reduction of understeer, and a small castor, camber and toe change. Additional benefits are improved handling, improved on-centre feel and improved straight ahead stability.



The front suspension rubber bushes have revised characteristics for the lower control arm. This modification gives better general road shock dampening in the suspension without affecting handling and vehicle response. The

steering connecting-rod insulators are stiffer and a new steering column attachment to the dash cover results in improved response and predictability.

The optional variable-ratio power steering has also been revised to improve steering ease during parking and to improve the on-centre feel, the dynamic effort and durability. Finally, the partial front frame has been shortened, resulting in weight reduction and improved durability.

## **RTS** Radial Tuned Suspension

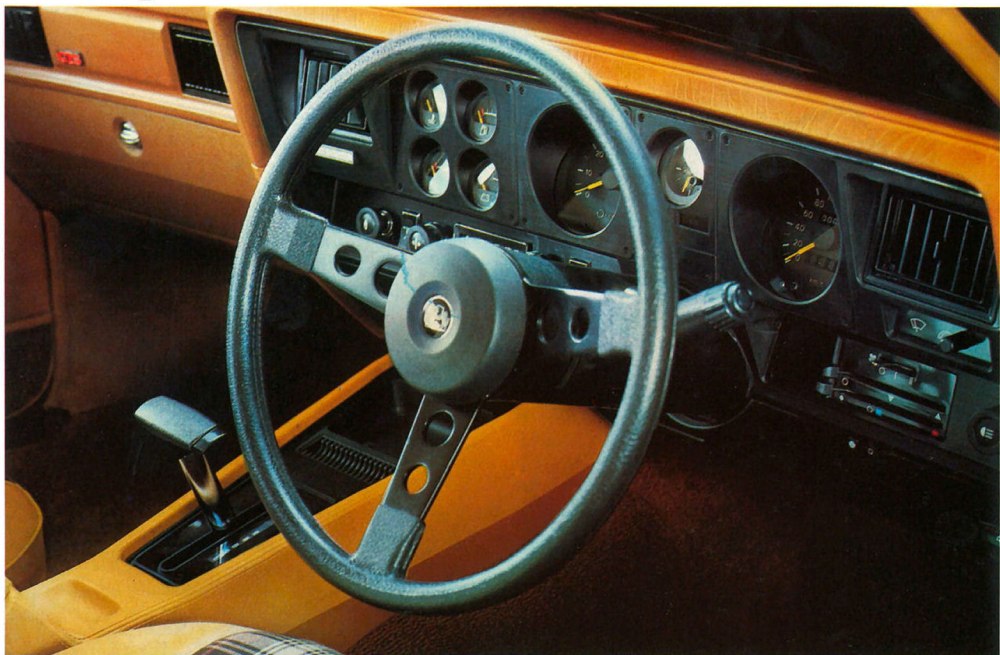
Yes, the GTS with Radial Tuned Suspension really brings out that real road feel. One quick test drive, and you'll be convinced. The GTS with RTS is definitely one of a kind. The driving kind.

### **RTS Engineering List.**

- Steel belted radial ply tyres.
- Wide wheel rims.
- Front stabilizer bar.
- Rear stabilizer bar (decoupled).
- Longer, deeper coil springs.
- Larger diameter shock absorbers.
- Re-designed shock absorber mountings.
- Negative front camber.
- Positive front castor.
- Re-designed and re-located upper control arm brackets.
- Re-designed suspension bushings (radially hard, longitudinally soft).
- Re-designed larger front suspension compression bumper.
- Re-designed rear axle lower control arm bushings.
- Re-designed body mounting system for reduced body flex.
- Stiffer steering connecting rod insulators.
- More rigid steering column attachments.
- Optional power steering, re-designed for improved driving feel.



# Don't just sit there, drive somewhere.



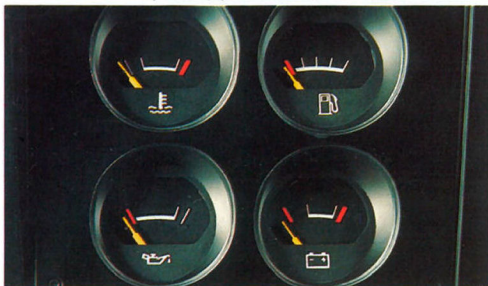
The cockpit view of the car with instant feedback. Shown with optional cloth trim seats and T-bar automatic.



The control stalk lets you keep your hands on the wheel.



Macho tacho. Revving and waiting.



Information at a glance. Ammeter, water temp, oil pressure, fuel gauges.



Flight GTS. Leaving through gates 1, 2, 3 and 4.

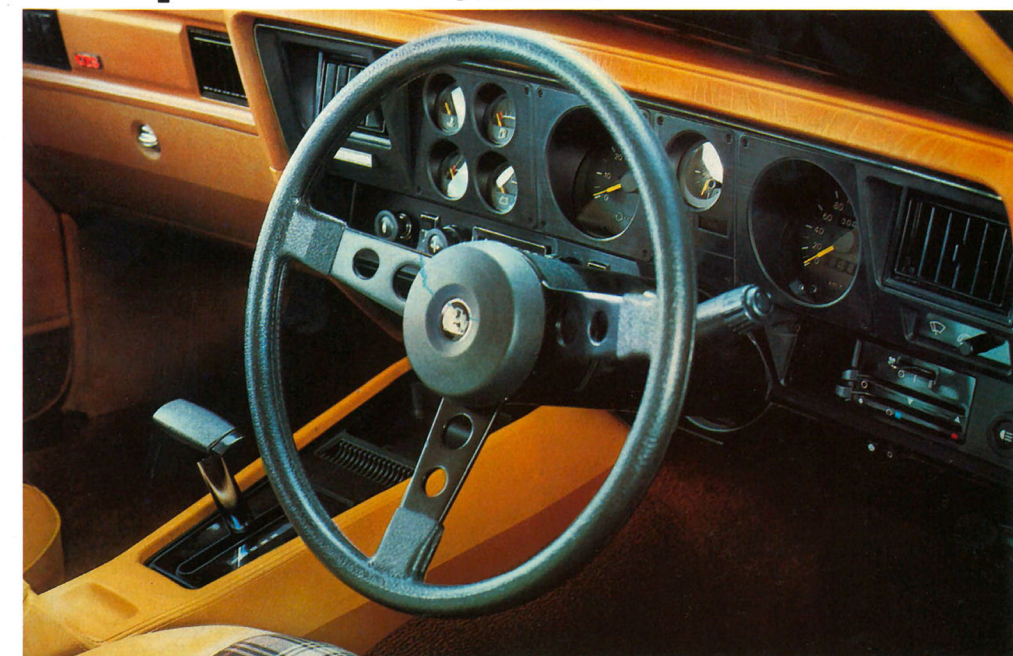
# GTS. Perpetual emotion machine.



|  |                       | Standard Equipment.  | Optional Equipment.  |        |                       |                        |                       |                |  |                       |   |   |
|--|-----------------------|--|--|--------|-----------------------|------------------------|-----------------------|----------------|--|-----------------------|---|---|
| <p><b>Specifications.</b></p> <p>Engine: 4.2 litre V8<br/>Bore: 3.625" (92.0mm) x Stroke: 3.062" (77.7mm)<br/>Capacity: 252.81cu. ins. (4142cm<sup>3</sup>)<br/>Compression Ratio: 9.4:1<br/>RAC Rating: 42.0<br/>Transmission: 4-speed manual, all synchromesh. Floor mounted in console<br/>Ratios: 1st 3.05:1, 2nd 2.19:1, 3rd 1.51:1, 4th 1.00:1, Rev. 3.05:1<br/>Rear Axle: Type — Salisbury housing with live axles. Ratio: 3.55:1<br/>Radial Tuned Suspension: Front — Independent with coil springs<br/>Rear — 4-link system with axle-mounted coil springs<br/>Brakes: 4-wheel power-assisted discs<br/>Standard Tyres: ER70H14 steel-belted radials<br/>Fuel Tank Capacity: 16.5 gallons (75.0 litres)<br/>Wheelbase: 111.0" (2819mm)<br/>Track: Front — 60.55" (1538mm)</p> |                       | <p>Radial Tuned Suspension. Steel-belted radial ply tyres. 4.2 litre V8 with dual exhausts. Power-assisted 4 wheel disc brakes.<br/>Front and rear stabiliser bars. 25.0:1 steering ratio.<br/>Full sports instrumentation. Trip odometer.<br/>Push-button radio.<br/>4-speed all synchromesh transmission.<br/>Four quartz halogen headlamps with inboard driving-type "pencil beams".<br/>Stalk-mounted controls for windshield wipers, washers, turn signals and headlamp dimming and flashing.<br/>Full-foam reclining bucket seats. Console/armrest/storage compartment.<br/>2-speed power ventilation. Electric rear window demister. Front and rear air dams. Loop pile carpeting. Armrests — front and rear doors. GTS sports wheels. Cigarette lighter. Retractable front seat belts.</p> | <p>5.0 litre V8. Laminated windshield. Power steering. Cloth trim seats. 3-speed T-bar automatic. Limited-slip differential. Vinyl roof trim. Electrically operated windows. Fully integrated air conditioning. 7.00JJ polycast sports wheels. 6.00JJ wire wheels.</p> <p>All illustrations and specifications contained in this catalogue are based on the latest product information available at time of publication approval. The right is reserved to make changes at any time, without notice, in prices, colours, materials, equipment, specifications and models and to discontinue models. Some of the equipment shown or described throughout this catalogue is available at extra cost. Check with your Holden Dealer for complete information.</p> |        |                       |                        |                       |                |  |                       |   |   |
| <p><b>Safety Features.</b></p> <p>Safety features include:<br/>Energy-absorbing steering column. Tandem brake master cylinder — split hydraulic circuits. Power-assisted brakes. Energy-absorbing sun visors. Electric windshield washers with 2-speed wipers. Fan boosted heater/demister. Brake system failure warning light. Parking brake warning light. Front seat head restraints. Seat belts for five occupants, including retractable dual sensitive belts for front seat positions. Flow-through ventilation. Underslung, isolated fuel tank and external fuel lines. Cargo guard luggage compartment barrier.</p>  |                       | <p align="center"><b>GTS Power Train.</b></p> <table border="1"> <thead> <tr> <th data-bbox="540 763 649 798">Engine</th> <th data-bbox="649 763 846 798">Standard Transmission</th> <th data-bbox="846 763 1053 798">Optional Transmissions</th> </tr> </thead> <tbody> <tr> <td data-bbox="540 798 649 875">Standard 4.2 litre V8</td> <td data-bbox="649 798 846 875">4-speed manual</td> <td data-bbox="846 798 1053 875">High-performance 4-speed manual<br/>Tri-matic automatic</td> </tr> <tr> <td data-bbox="540 875 649 968">Optional 5.0 litre V8</td> <td data-bbox="649 875 846 968">—</td> <td data-bbox="846 875 1053 968">High-performance 4-speed manual<br/>Turbo-Hydrumatic automatic</td> </tr> </tbody> </table>   |  | Engine | Standard Transmission | Optional Transmissions | Standard 4.2 litre V8 | 4-speed manual | High-performance 4-speed manual<br>Tri-matic automatic | Optional 5.0 litre V8 | — | High-performance 4-speed manual<br>Turbo-Hydrumatic automatic |
| Engine   | Standard Transmission | Optional Transmissions   |  |        |                       |                        |                       |                |  |                       |   |   |
| Standard 4.2 litre V8  | 4-speed manual        | High-performance 4-speed manual<br>Tri-matic automatic   |  |        |                       |                        |                       |                |  |                       |   |   |
| Optional 5.0 litre V8  | —                     | High-performance 4-speed manual<br>Turbo-Hydrumatic automatic  |  |        |                       |                        |                       |                |  |                       |   |   |



**Don't just sit there, drive somewhere.**



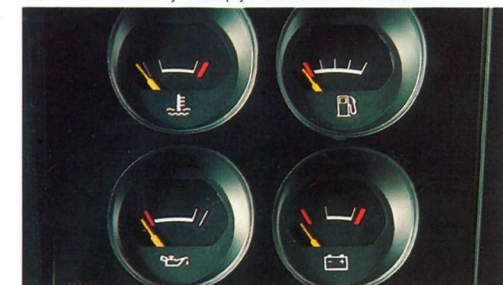
The cockpit view of the car with instant feedback. Shown with optional cloth trim seats and T-bar automatic.



The control stalk lets you keep your hands on the wheel.



Macho tacho. Revving and waiting.



Information at a glance. Ammeter, water temp, oil pressure, fuel gauges.



Flight GTS. Leaving through gates 1, 2, 3 and 4.

**GTS. Perpetual emotion machine.**



**Specifications.**

Engine: 4.2 litre V8  
 Bore: 3.625" (92.0mm) x Stroke: 3.062" (77.7mm)  
 Capacity: 252.81 cu. ins. (4142cm<sup>3</sup>)  
 Compression Ratio: 9.4:1  
 RAC Rating: 42.0  
 Transmission: 4-speed manual, all synchromesh. Floor mounted in console  
 Ratios: 1st 3.05:1, 2nd 2.19:1, 3rd 1.51:1, 4th 1.00:1, Rev. 3.05:1  
 Rear Axle: Type — Salisbury housing with live axles. Ratio: 3.55:1  
 Radial Tuned Suspension: Front — Independent with coil springs  
 Rear — 4-link system with axle-mounted coil springs  
 Brakes: 4-wheel power-assisted discs  
 Standard Tyres: ER70H14 steel-belted radials  
 Fuel Tank Capacity: 16.5 gallons (75.0 litres)  
 Wheelbase: 111.0" (2819mm)  
 Track: Front — 60.55" (1538mm)

Rear — 61.30" (1557mm)  
 Overall Length: 190.8" (4846mm)  
 Overall Width: 73.9" (1877mm)  
 Turning Circle: Kerb to Kerb — 39.7' (12.1m)  
 Ground Clearance: 6.4" (162.6mm)  
 Estimated Kerb Weight: 3307lbs (1500kgs)

**Safety Features.**

Safety features include:  
 Energy-absorbing steering column. Tandem brake master cylinder — split hydraulic circuits. Power-assisted brakes. Energy-absorbing sun visors. Electric windshield washers with 2-speed wipers. Fan boosted heater/demister. Brake system failure warning light. Parking brake warning light. Front seat head restraints. Seat belts for five occupants, including retractable dual sensitive belts for front seat positions. Flow-through ventilation. Underslung, isolated fuel tank and external fuel lines. Cargo guard luggage compartment barrier.

**Standard Equipment.**

Radial Tuned Suspension. Steel-belted radial ply tyres. 4.2 litre V8 with dual exhausts. Power-assisted 4 wheel disc brakes. Front and rear stabiliser bars. 25.0:1 steering ratio. Full sports instrumentation. Trip odometer. Push-button radio. 4-speed all synchromesh transmission.

Four quartz halogen headlamps with inboard driving-type "pencil beams". Stalk-mounted controls for windshield wipers, washers, turn signals and headlamp dimming and flashing. Full-foam reclining bucket seats. Console/armrest/storage compartment. 2-speed power ventilation. Electric rear window demister. Front and rear air dams. Loop pile carpeting. Armrests — front and rear doors. GTS sports wheels. Cigarette lighter. Retractable front seat belts.

**Optional Equipment.**

5.0 litre V8. Laminated windshield. Power steering. Cloth trim seats. 3-speed T-bar automatic. Limited-slip differential. Vinyl roof trim. Electrically operated windows. Fully integrated air conditioning. 7.00JJ polycast sports wheels. 6.00JJ wire wheels.

All illustrations and specifications contained in this catalogue are based on the latest product information available at time of publication approval. The right is reserved to make changes at any time, without notice, in prices, colours, materials, equipment, specifications and models and to discontinue models shown or described throughout this catalogue is available at extra cost. Check with your Holden Dealer for complete information.

**GTS Power Train.**

| Engine                | Standard Transmission | Optional Transmissions  |
|-----------------------|-----------------------|---|
| Standard 4.2 litre V8 | 4-speed manual        | High-performance 4-speed manual<br>Tri-matic automatic        |
| Optional 5.0 litre V8 | —                     | High-performance 4-speed manual<br>Turbo-Hydramatic automatic |



General Motors-Holden's Sales Pty. Limited Copyright. Issued September, 1977. H666

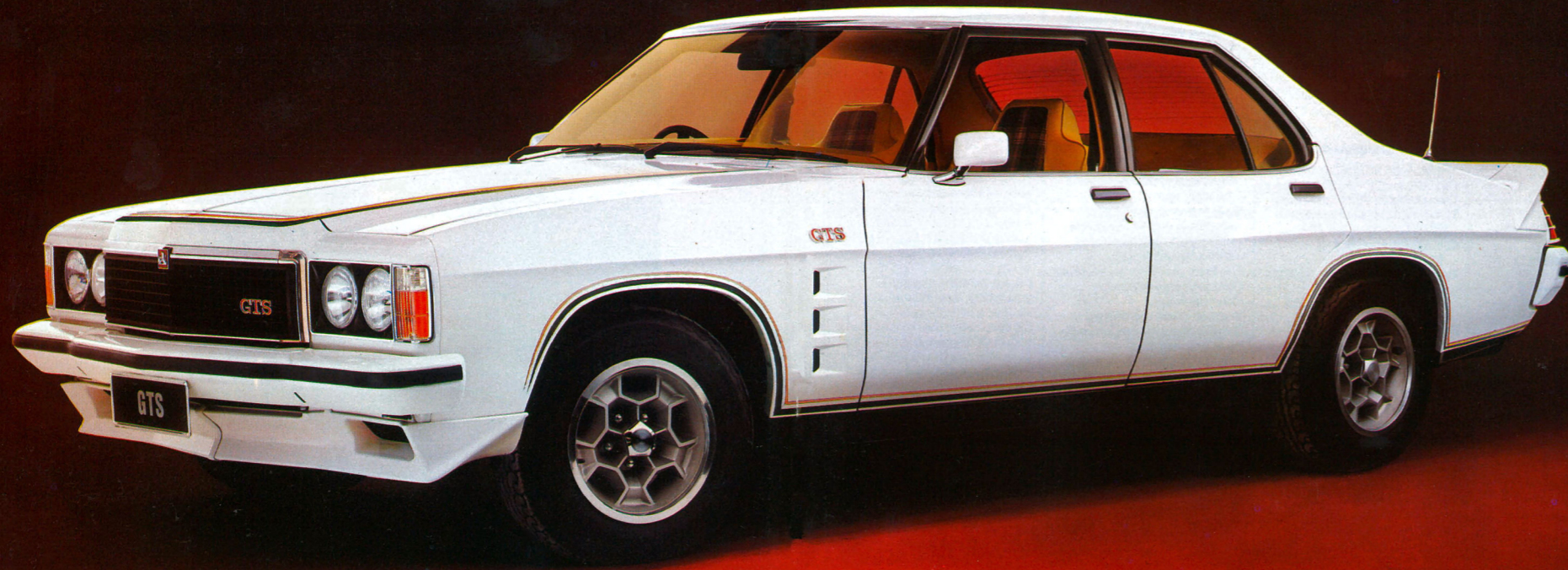
**GTS WITH RTS**



Put more drive in your driving.

# GTS.

GTS shown with optional 7.00JJ polycast wheels, sports striping and cloth trim seats.



Holden GTS. Australia's only true four-door sports Sedan. Now with the fantastic handling of RTS and the backing of service and spares from over 500 Dealers from coast to coast.

The newest GTS is as impressive underneath as it is on top.



With road-straightening, precise-handling Radial Tuned Suspension. With the growl of a hill-flattening 4.2 litre V8 with dual exhausts. With the sure-footed stopping of big 4-wheel power disc brakes. With the grab of ER70H14 steel-belted radials on 6-inch wide rally wheels. Then there's the swifter shifting of the all-synchro 4-speed floor shift. The instant feedback of full instrumentation. The comfort and support of the high-backed buckets. The flash and function of



the GTS exterior with its front and rear air dams. And the bright-eyed visibility of four quartz halogen headlamps. And on, and on, and on.

But don't just take our word for it. Get your hands on a GTS with RTS. Then go put it through its paces.

You'll see we're not kidding around.



Remember the first time you saw a GTS? How it looked? How you felt?

Remember the first time you got a ride in a GTS? And remember (if you were really lucky) the first time you actually got to drive one and discovered what performance was all about. Well, that old magic is still there. Only newer. And much, much better. Just looking at it, you know



this one's something special. From the bold black grille, to the four quartz halogen headlamps (the inboard ones have long-range driving type "pencil beams"), to the GTS rally wheels, all the way back to the crisp deck lid panel and the custom chrome and black styling accents.

Inside, more special treatment. Revised instrument graphics and pointers. Reclining full-foam buckets up front. A fold-down centre armrest in back when you



order optional cloth trim. Console/armrest/storage compartment. Sports steering wheel. Four-speed shifter. Push-button radio. Electric clock. Trip odometer. And last (but far from least) Radial Tuned Suspension and GTS I.D. to let them know that you're in command of one of the finest handling, best performing cars ever.



Optional cloth trim seats and T-bar automatic.

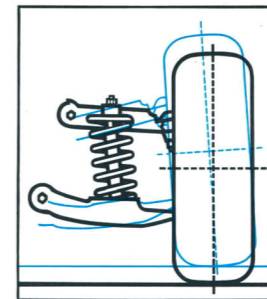
# GTS with RTS.



Radial Tuned Suspension is the road-ready result of advanced engineering development and computer-calculated technology.

RTS is designed from the road up around ER70H14 steel-belted radial ply tyres mounted on 6.00JJ x 14 rims. This combination of higher lateral tyre stiffness and wide track gives you greatly improved handling and greatly increased tyre mileage. But that's just the beginning. The front and rear stabiliser bars have been beefed up for less body roll, optimum roll couple distribution and improved handling. The decoupled rear stabiliser bar reduces impact harshness, transmission noise, and compliance steer.

RTS also features specially rated front and rear springs with "tuned" shockers to improve road holding and road comfort, while reducing



Front suspension is computer-designed to keep optimum tyre tread on the road while cornering.

fade. Special shock absorber attachments have been added to improve road holding, and reduce noise transmittance. There's a larger front suspension compression bumper to improve dynamic ground clearance and prevent metal to metal bump through.

The front upper control arm bracket has been relocated for more constant roll steer, reduction of understeer, and a small castor, camber and toe change. Additional benefits are improved handling, improved on-centre feel and improved straight ahead stability.



The front suspension rubber bushes have revised characteristics for the lower control arm. This modification gives better general road shock dampening in the suspension without affecting handling and vehicle response. The

steering connecting-rod insulators are stiffer and a new steering column attachment to the dash cover results in improved response and predictability.

The optional variable-ratio power steering has also been revised to improve steering ease during parking and to improve the on-centre feel, the dynamic effort and durability. Finally, the partial front frame has been shortened, resulting in weight reduction and improved durability.

## RTS Radial Tuned Suspension

Yes, the GTS with Radial Tuned Suspension really brings out that real road feel. One quick test drive, and you'll be convinced. The GTS with RTS is definitely one of a kind. The driving kind.

### RTS Engineering List.

- Steel belted radial ply tyres.
- Wide wheel rims.
- Front stabilizer bar.
- Rear stabilizer bar (decoupled).
- Longer, deeper coil springs.
- Larger diameter shock absorbers.
- Re-designed shock absorber mountings.
- Negative front camber.
- Positive front castor.
- Re-designed and re-located upper control arm brackets.
- Re-designed suspension bushings (radially hard, longitudinally soft).
- Re-designed larger front suspension compression bumper.
- Re-designed rear axle lower control arm bushings.
- Re-designed body mounting system for reduced body flex.
- Stiffer steering connecting rod insulators.
- More rigid steering column attachments.
- Optional power steering, re-designed for improved driving feel.

